



Region 4 Barrier ID: W207 (Priority Barrier).

Barrier Name: SR-68 Harper Creek.

Linear Infrastructure: SR-68.

Geographic Area: Ambler Park to Toro Park.

Length: 1.61 km (1.00 mi).

Target Species: Badger (*Taxidea taxus*), black bear (*Ursus americanus*), California red-legged frog (*Rana draytonii*), California tiger salamander (*Ambystoma californiense*), mountain lion (*Puma concolor*), deer (*Odocoileus hemionus*), western spadefoot toad (*Spea hammondi*).

Connectivity Concerns: SR-68 and associated housing developments act as a barrier to isolate Fort Ord National Monument; this segment is a short pinch point that is the last intact landscape connection between Fort Ord and Toro County Park, which connects Fort Ord to the Coast Ranges.

Remediation Goals: Conserve habitats along SR-68 with land acquisitions and conservation easements. Install directional fencing and expand/enhance existing infrastructure.

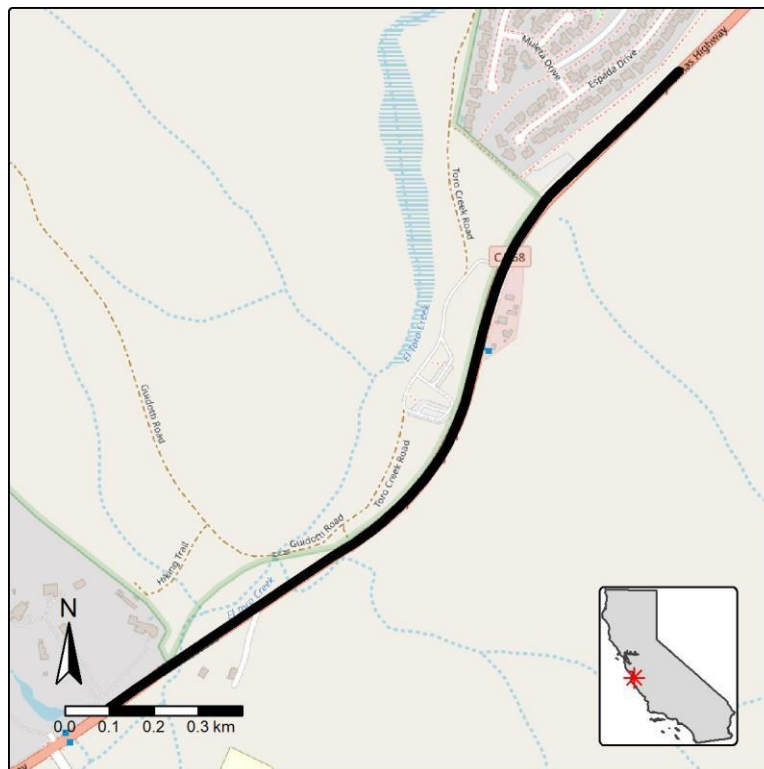


Figure: SR-68 (Harper Creek) between Ambler Park and Toro Park is a Region 4 priority wildlife connectivity barrier.