



Region 4/Region 5 Barrier ID: W209 (Barrier).

Barrier Name: SR-166 Cuyama Canyon.

Linear Infrastructure: SR-166.

Geographic Area: Santa Maria to Caliente Mountain/Carizzo Plain.

Length: 72.07 km (44.79 mi).

Target Species: Black bear (*Ursus americanus*), blunt-nosed leopard lizard (*Gambelia sila*), foothill yellow-legged frog (*Rana boylii*), giant kangaroo rat (*Dipodomys ingens*), mountain lion (*Puma concolor*), deer (*Odocoileus hemionus*), San Joaquin kit fox (*Vulpes macrotis mutica*), western spadefoot toad (*Spea hammondi*).

Connectivity Concerns: SR-166 bisects large blocks of intact habitat for several species in the Santa Lucia Range. This area is important to wildlife connectivity between the Sierra Nevada Mountains, the Transverse Ranges, and Coast Ranges.

Remediation Goals: Install directional fencing, add new under-crossings, and expand/enhance existing infrastructure such as culverts and creek bridges.

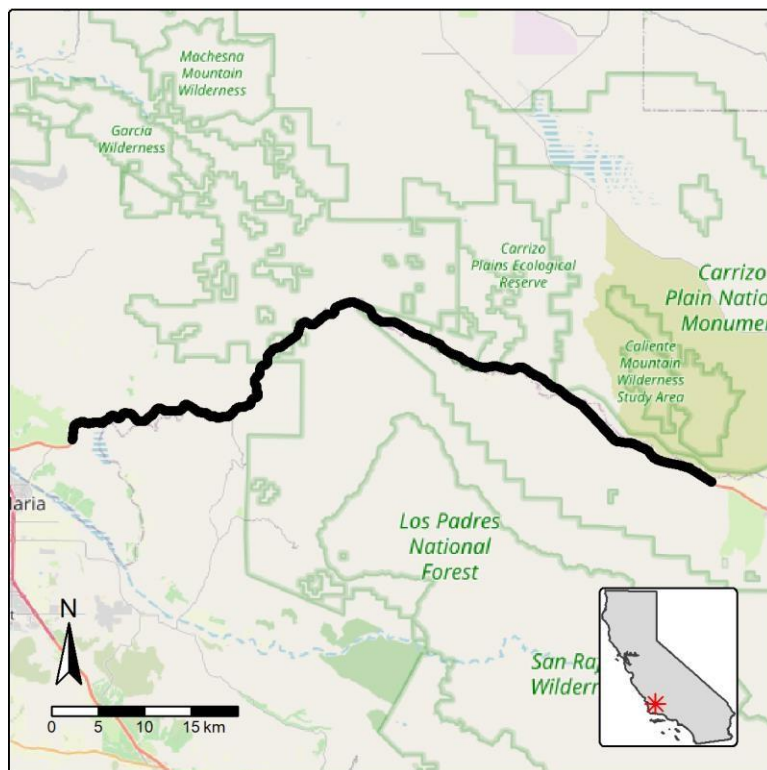


Figure: SR-166 (Cuyama Canyon) between Santa Maria and Caliente Mountain is a Region 4 wildlife connectivity barrier.