



Region 4 Barrier ID: W210 (Barrier).

Barrier Name: SR-33 Grocer Grade.

Linear Infrastructure: SR-166/SR-33.

Geographic Area: Cuyama to Maricopa.

Length: 19.97 km (12.41 mi).

Target Species: Badger (*Taxidea taxus*), blunt-nosed leopard lizard (*Gambelia sila*), giant kangaroo rat (*Dipodomys ingens*), pronghorn (*Antilocapra americana*), San Joaquin antelope squirrel (*Ammospermophilus nelsoni*), San Joaquin kit fox (*Vulpes macrotis mutica*), tule elk (*Cervus canadensis nannodes*), western spadefoot toad (*Spea hammondi*).

Connectivity Concerns: SR-166/SR-33 bisects a narrow landscape linkage of public lands connecting Carizzo Plain National Monument and the Bitter Creek National Wildlife Refuge. This pinch point connects San Joaquin Valley habitats that provide movement for numerous endangered species.

Remediation Goals: Install directional fencing, add new under-crossings, and expand/enhance existing infrastructure such as culverts and creek bridges.

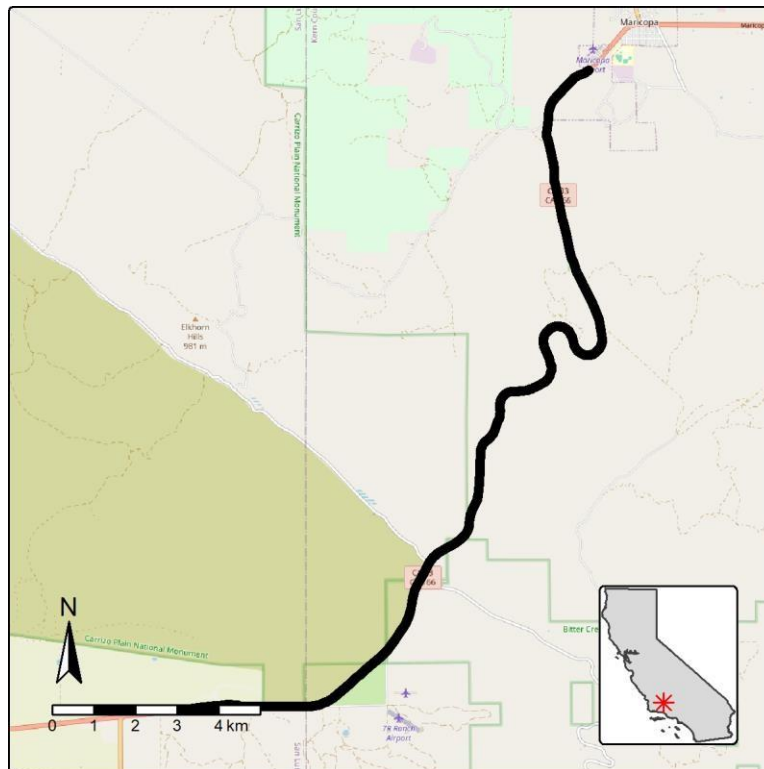


Figure: SR-33 (Grocer Grade) between Cuyama and Maricopa is a Region 4 wildlife connectivity barrier.