



**Region 4 Barrier ID: W212 (Barrier).**

**Barrier Name:** I-5 Los Banos.

**Linear Infrastructure:** I-5.

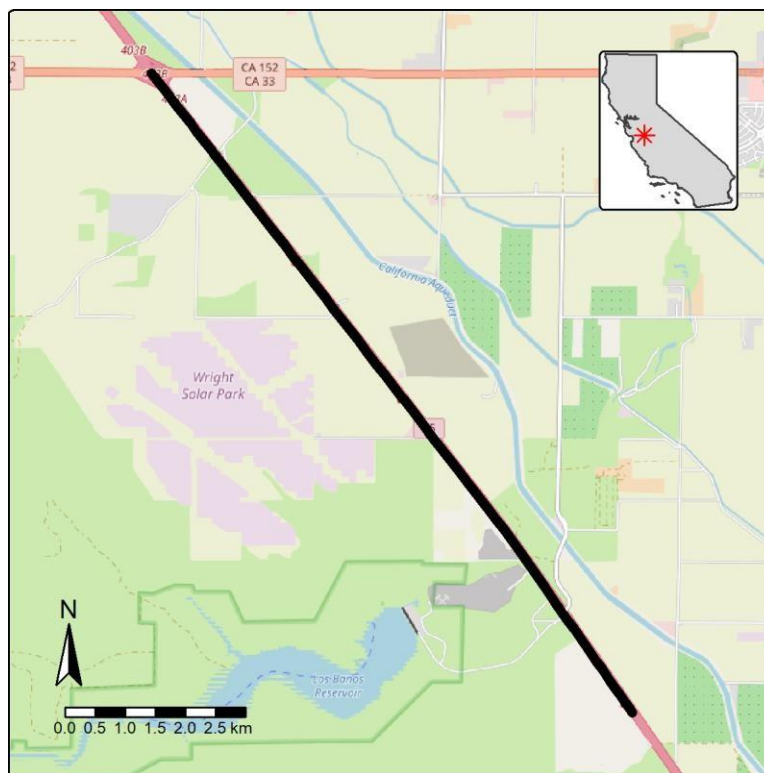
**Geographic Area:** SR-33 to Los Banos Creek.

**Length:** 10.61 km (6.59 mi).

**Target Species:** Badger (*Taxidea taxus*), blunt-nosed leopard lizard (*Gambelia sila*), San Joaquin kit fox (*Vulpes macrotis mutica*), tule elk (*Cervus canadensis nannodes*).

**Connectivity Concerns:** I-5 bisects a narrow strip of intact habitat for a variety of San Joaquin Valley species of concern. This segment of a busy highway is located next to several canals and solar developments which may contribute to the cumulative effects of habitat degradation.

**Remediation Goals:** Install directional fencing, add new under-crossings, and expand/enhance existing infrastructure such as culverts and creek bridges.



**Figure:** I-5 (Los Banos) between SR-33 and Los Banos Creek is a Region 4 wildlife connectivity barrier.