



Region 4 Barrier ID: W213 (Barrier).

Barrier Name: SR-1 Chorro Creek.

Linear Infrastructure: SR-1.

Geographic Area: Morro Bay to San Luis Obispo.

Length: 15.51 km (9.64 mi).

Target Species: Badger (*Taxidea taxus*), bobcat (*Lynx rufus*), black bear (*Ursus americanus*), California red-legged frog (*Rana draytonii*), mountain lion (*Puma concolor*), deer (*Odocoileus hemionus*).

Connectivity Concerns: SR-1 bisects large blocks of intact habitat for several species in the Chorro Valley and between the Santa Lucia Range and Irish Hills. Staff biologists have documented deer, black bear, and mountain lion roadkill along this stretch of highway.

Remediation Goals: Install directional fencing, add new under-crossings, and expand/enhance existing infrastructure such as culverts and creek bridges.

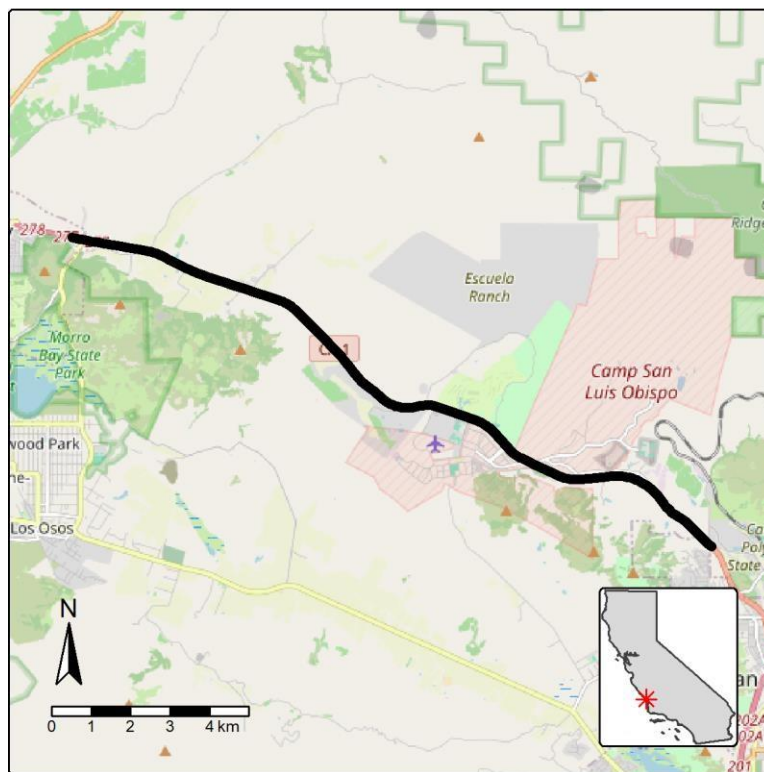


Figure: SR-1 (Chorro Creek) between Morro Bay and San Luis Obispo is a Region 4 wildlife connectivity barrier.