



Region 6 Barrier ID: W220 (Barrier).

Barrier Name: I-40 Barstow Desert Tortoise Priority area between Barstow and Newberry Spring

Linear Infrastructure: I-40.

Geographic Area: Mojave Desert, between Barstow and Newberry Spring, San Bernardino County, Caltrans District 8.

Segment Details: 22.04 km (13.70 mi).

Target Species: Desert tortoise (*Gopherus agassizii*).

Connectivity Concerns: Desert tortoise priority area from U.S. Geological Survey.

Remediation Goals: Install exclusion/directional fencing, add new undercrossings, and expand/enhance existing infrastructure such as culverts and creek bridges.

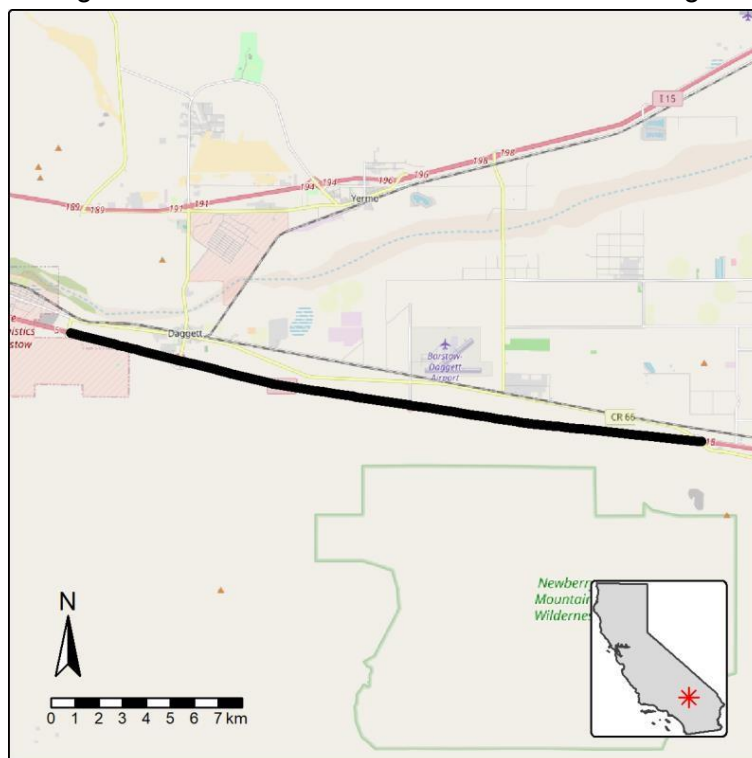


Figure: Barrier W220 along I-40 in San Bernardino County.