



**Region 6 Barrier ID: W221 (Barrier).**

**Barrier Name:** I-40 Pisgah Desert Tortoise priority area along I-40 W of Pisgah

**Linear Infrastructure:** I-40.

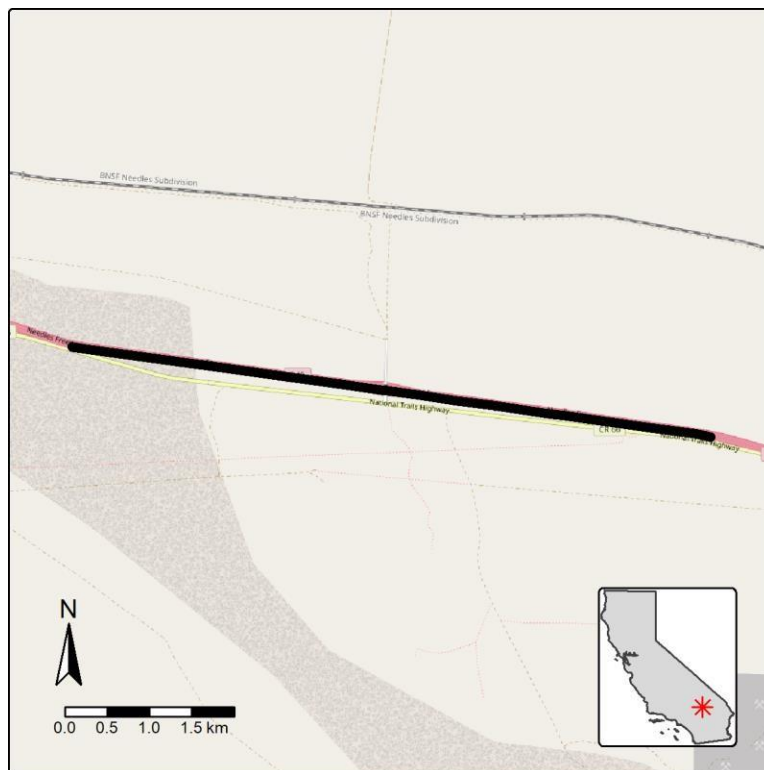
**Geographic Area:** Mojave Desert San Bernardino County, Caltrans District 8.

**Length:** 6.27 km (3.89 mi).

**Target Species:** Desert tortoise (*Gopherus agassizii*).

**Connectivity Concerns:** Desert tortoise priority area from U.S. Geological Survey.

**Remediation Goals:** Install exclusion/directional fencing. Expand/enhance existing infrastructure such as culverts.



**Figure:** Barrier W221 along I-40 in San Bernardino County.