



**Region 6 Barrier ID: W223 (Barrier).**

**Barrier Name:** US-95 Desert Tortoise Priority site along US-95 near Needles.

**Linear Infrastructure:** US-95.

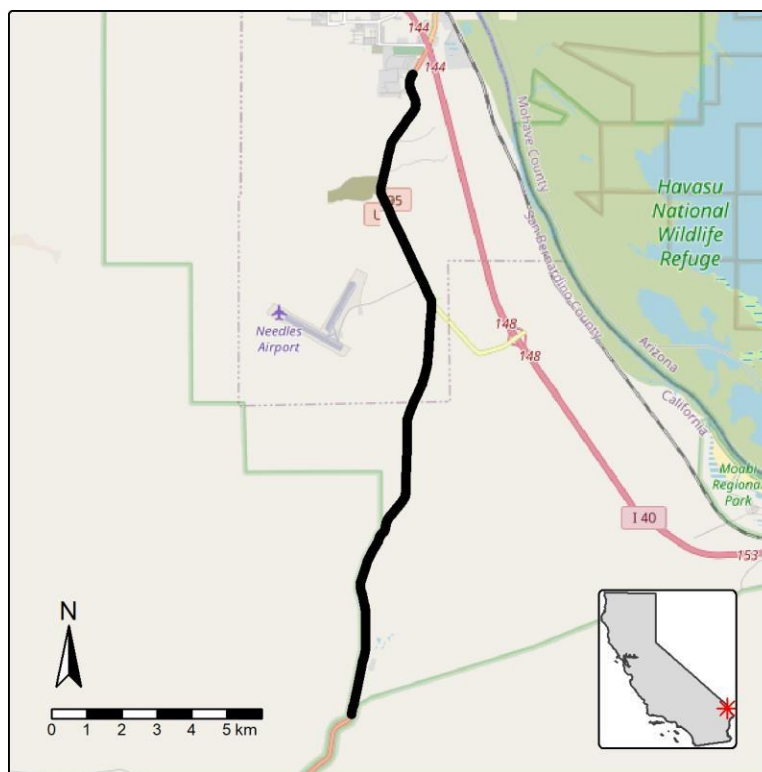
**Geographic Area:** Mojave Desert, San Bernardino County, Caltrans District 8.

**Length:** 15.83 km (9.84 mi).

**Target Species:** Desert tortoise (*Gopherus agassizii*).

**Connectivity Concerns:** Desert tortoise priority area from U.S. Geological Survey.

**Remediation Goals:** Install exclusion/directional fencing. Expand/enhance existing infrastructure such as culverts.



**Figure:** Barrier W223 in San Bernardino County.