



Region 6 Barrier ID: W226 (Barrier).

Barrier Name: SR-79 from Temecula to Aguanga

Linear Infrastructure: SR-79.

Geographic Area: Western Riverside County, Caltrans District 8.

Length: 21.14 km (13.14 mi).

Target Species: Mountain lion (*Puma concolor*), deer (*Odocoileus hemionus*), mesocarnivores.

Connectivity Concerns: This skirts the northern margin of the Palomar Range which links northern marginal habitats to the Palomars to the south. This is potentially important for lions.

Remediation Goals: Install exclusion/directional fencing. Expand/enhance existing infrastructure such as culverts.

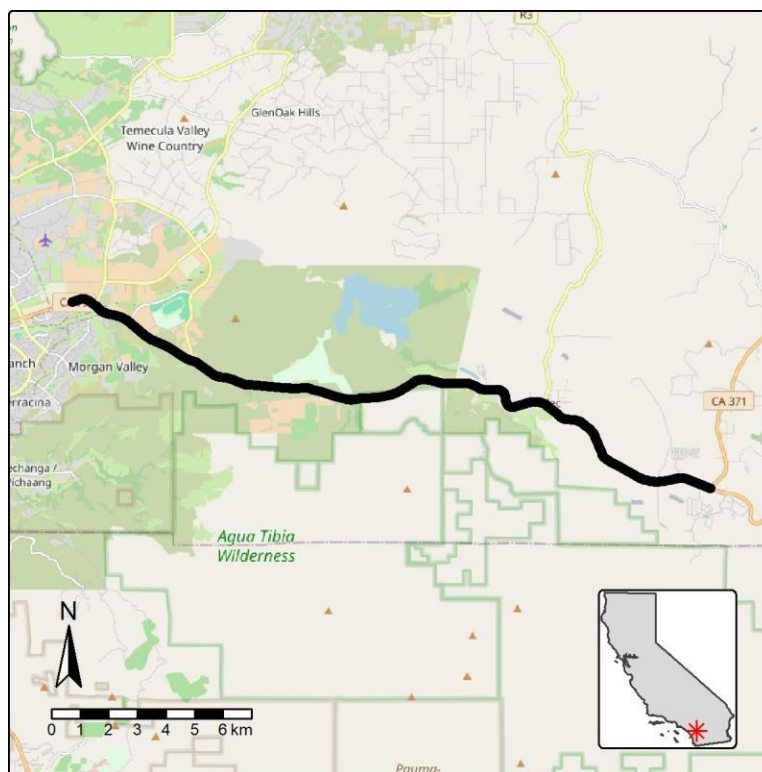


Figure: Barrier W226 along SR-79 in Riverside County.