



Region 6 Barrier ID: W228 (Barrier).

Barrier Name: US-395 near Independence, elk roadkill site.

Linear Infrastructure: US-395.

Geographic Area: US-395 corridor in Inyo County, Caltrans District 9.

Length: 17.89 km (11.12 mi).

Target Species: Elk (*Cervus canadensis*) (introduced, non-migratory population).

Connectivity Concerns: Introduced elk cross the highway here and pose a risk to motorists. Roadkill indicate roughly one mortality every other year.

Remediation Goals: Install exclusion/directional fencing. Expand/enhance existing infrastructure such as culverts.

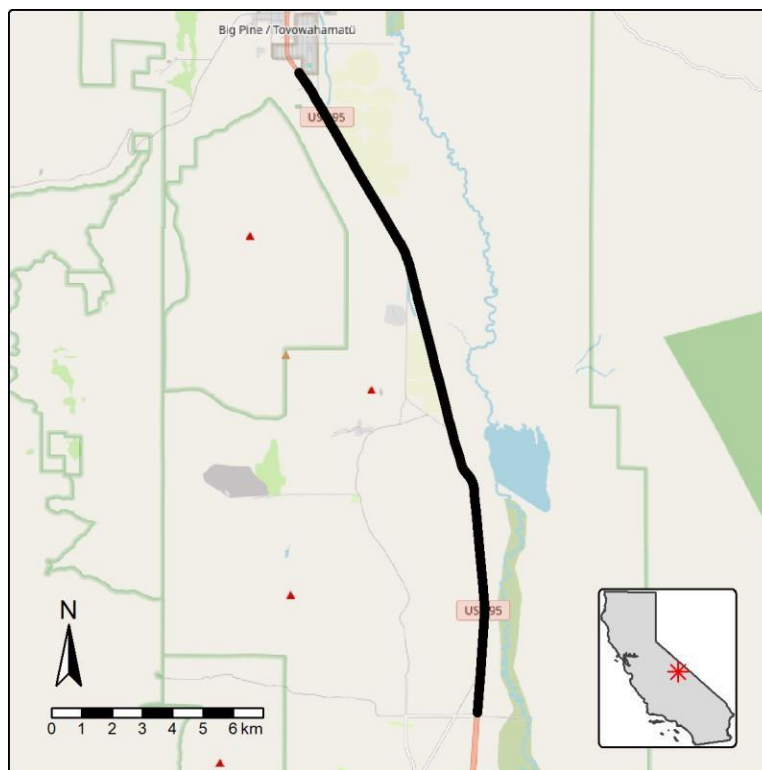


Figure: Barrier W228 along US-395 in Inyo County.