



Region 6 Barrier ID: W229 (Barrier).

Barrier Name: SR-190/SR-136 loop from Lone Pine to Olancha.

Linear Infrastructure: SR-190 and SR-136.

Geographic Area: US-395 corridor, Inyo County, Caltrans District 8.

Length: 49.54 km (30.79 mi).

Target Species: Desert tortoise (*Gopherus agassizii*), Mohave Ground Squirrel (*Xerospermophilus mohavensis*).

Connectivity Concerns: Potentially important area for Desert Tortoise and Mohave Ground Squirrel.

Remediation Goals: Exclusion fencing and culverts for desert tortoise. Need more spatially precise information on desert tortoise and mohave ground squirrel populations in this general area. Need to identify specific locations for mitigation.

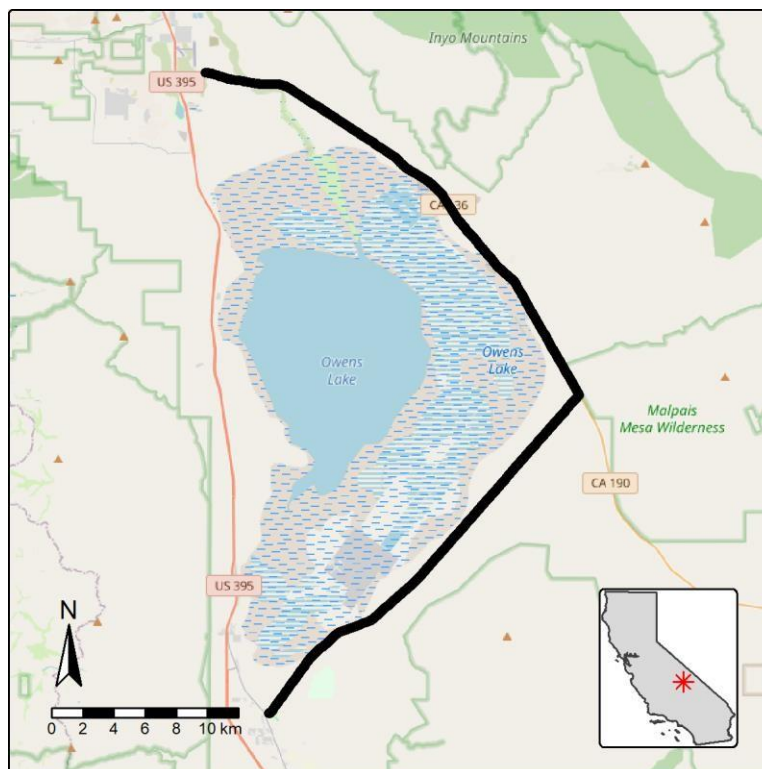


Figure: Barrier W229 along SR-190 and SR-136 in Inyo County.