



Region 6 Barrier ID: W230 (Barrier).

Barrier Name: I-10, Coachella Canal to Blythe.

Linear Infrastructure: I-10.

Geographic Area: Sonoran Desert Riverside County, Caltrans District 8.

Length: 141.45 km (87.91 mi).

Target Species: Desert mammals, e.g. coyote (*Canis latrans*), gray fox (*Urocyon cinereoargenteus*), bobcat (*Lynx rufus*) and reptiles that use washes.

Connectivity Concerns: Multiple Caltrans projects adding grouted riprap under 50 to 60 bridges for hydrology. Riprap would impede wildlife movement, especially for larger animals and any animals requiring sandy substrate in washes.

Remediation Goals: Work with Caltrans to identify alternative solutions where possible. Install exclusion/directional fencing. Expand/enhance existing infrastructure such as culverts.

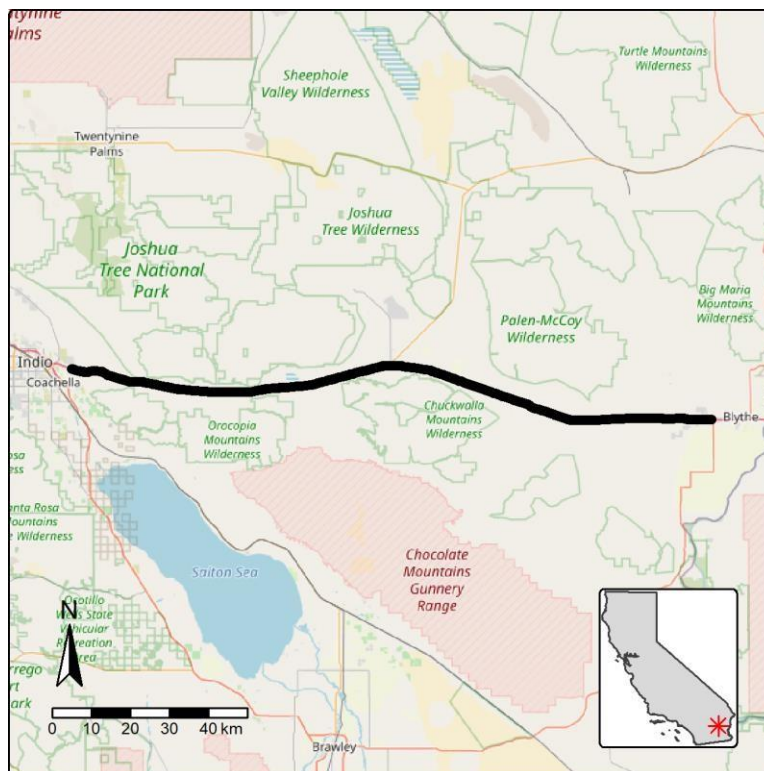


Figure: Barrier W230 along I-10 in Riverside County.