



# Kelp Restoration and Management Plan

## Community Working Group

Thursday, May 22, 2025

8:30am - 4:00pm PST

Justice Joseph Rattigan Building, Santa Rosa, CA



# Meeting Goals & Outcomes

## Today's Goals



- Deepen CWG understanding of the current kelp landscape.
- Explore future opportunities in expertise, education, outreach, and citizen science.
- Align and refine draft recommendations per CWG Charter guidelines.

## Today's Intended Outcomes



- Discuss and prioritize CWG-supported draft recommendations for the KRMP.
- Identify kelp-focused entities to map networks and partnerships statewide.

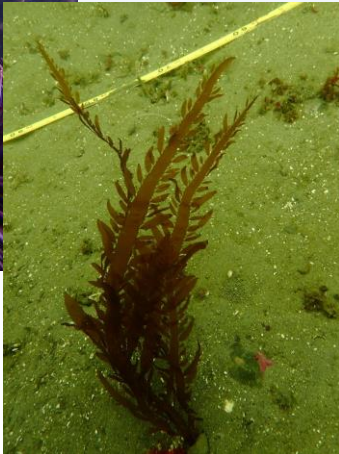


# Meeting Agreements

- Be present
- Be prepared to discuss agenda items constructively
- Share if you need to leave early
- Approach discussions from a place of diversity and inclusion
- Focus discussions on strategies and solutions that move conversations forward
- Listen for understanding and seek clarification
- Identify any personal/professional conflicts of interest
- Do not work at cross-interests with the group's goals and objectives
- Personal attacks will not be tolerated
- Take space, make space



# Introductions



Photos by Kristen Elsmore, CDFW

- **California Department of Fish & Wildlife**  
Kristen Elsmore, Rebecca Flores Miller, Adam Frimodig, Kirsten Ramey, Shelby Kawana
- **Ocean Protection Council**  
Pike Spector, Hallie Brown
- **Strategic Earth Consulting**  
Noelia Aponte-Silva, Rachelle Fisher, Sara Gené, Teresa Romero



# Meeting Agenda



- Welcome
- Recap CWG and SAC Meeting
- Management Strategies Activity
- Lunch
- Explore KRMP Recommendations
- Looking Ahead and Adjourn

*\*During Breaks: Collaborative Stakeholder Activity*





# Recap CWG and SAC Meeting

## Discussion Questions

- What stood out to you from the conversation with the SAC?
- Did anything feel unclear or raise new questions?



Photo by Rebecca Flores Miller, CDFW



# DRAFT CWG Descriptions of Kelp Status, 5/21

Thriving	Fine	Compromised	Depleted
<p>Kelp in great condition (abundant, thick canopy/understory)</p> <p>↑ spp abundance and biodiversity (eg abalone)</p> <p>Resilient to seasonal effects</p> <p>↑ Connectivity</p> <p>Healthy ecological systems connected</p> <p>Ppl connected</p>	<p>Is the change seasonal?</p> <p>↓ in kelp condition, spp abundance/biodiversity</p> <p>Remnant forest with few stressors</p> <p>Limited ecosystem imbalance</p> <p>Consider direction of change</p>	<p>Poor kelp condition (patchy, scarce, persistent, significant loss)</p> <p>↑ Invasive spp + grazers</p> <p>↓ Kelp associated spp</p> <p>Change in sediment pattern</p> <p>↓ People</p> <p>↓ Ecosystem services</p>	<p>Overgrazed, bare rock, poor/zero kelp condition</p> <p>Urchin barrens</p> <p>↑ Sediment</p> <p>↓ Connectivity</p> <p>↓ Biodiversity</p> <p>↓ Humans</p>



# Management Strategies Activity

- Example actions
  - Tribal co-management (e.g. formal partnerships with agreements and contracts)
  - Community engagement, education/outreach, and knowledge sharing (e.g. trainings, education programs, public comment)
  - Inter- and intra- agency coordination/ partnerships (e.g. coordinate on permitting, formal partnerships with agreements and contracts)
  - Restoration (e.g. grazer suppression, bolster spore supply)
  - Harvest management (e.g. quotas, seasons, methods)
  - Research to inform management (e.g. test new tools, assess efficacy of approaches)





# Management Strategies Activity, Cont'd

- There are 6 stations, 1 per management strategy in rooms 405 and 410
  - Tribal co-management
  - Community engagement, education/outreach, and knowledge sharing
  - Inter- and intra- agency coordination/ partnerships
  - Restoration
  - Harvest management
  - Research to inform management



# Management Strategies Activity Cont'd

- Visit each station and write down your recommendations for actions to take for each of the 4 kelp statuses on post it notes (1 idea per note please)
  - Green / Thriving
  - Yellow / Fine
  - Orange / Compromised
  - Red / Depleted
- Talk to each other, reference your ideas from yesterday's activities, consider your definitions/descriptions of kelp status conditions



Lunch



# Activity: Management Priorities

- You have 5 sticky dots, each worth \$4 million, for a total of \$20 million
- Visit each station and place all 5 of your sticky dots on your priority actions for resource allocation (can be within whatever management strategy, whatever kelp status)
- Talk to each other, reference your ideas from yesterday's activities, consider your definitions/descriptions of kelp status conditions



# KRMP Recommendations: Example

## Example Recommendation from another project:

If the surplus cannot be moved to PSMSC, then we would make this recommendation.

Regulatory change to reduce the biennial permit to \$600 and trap tags remain at \$5/tag

So do not continue to build the surplus. (15u, 2s, 2d)

**UPDATED voting (16u, 2s, 0d, one absent)**



# KRMP Recommendations: Example, Cont'd

**Recommendation 1b, Preventing a Continued Surplus in the Dungeness Crab Account:** If the surplus in the Dungeness Crab Account (FGC §8276.5) cannot be managed by PSMFC, then the DCTF recommends amending §132.1 Title 14, CCR to reduce the cost of the biennial permit fees to the fleet thereby eliminating the continued accrual of a surplus in the Dungeness crab account. The DCTF estimates that by reducing the biennial permit fee down to \$600 while continuing to charge \$5/tag, CDFW should be able to cover the costs of the DCTLP and the DCTF while not continuing to accumulate a surplus.

Vote of all DCTF Members (ex officio Members abstained):

Thumbs up	Thumbs Sideways	Thumbs Down	Abstained	Absent
19	0	0	0	2

Rationale:

The DCTF understands that CDFW must use the Dungeness Crab Account to cover costs to administer and enforce the DCTLP and support the administration and facilitation of the DCTF. However, since the program's inception in 2013-2014 FY ([Appendix 5](#)), CDFW has not utilized its full spending authority and continues to accrue excess funds in the account year after year ([Appendix 4](#)). As a result, CDFW is mandated to lower the cost of the fees associated with the program trap tag fee and the biennial trap limit permit fee. As outlined in Recommendation 1a, the DCTF supports utilizing these excess funds to support DCTF priorities listed, but if it is not possible for PSMFC to manage these funds, then the DCTF recommends §132.1 Title 14, California Code of Regulations (CCR) be amended to reduce the cost of the biennial trap limit permit fee to the fleet to eliminate the surplus in the account. The revenue generated by the DCTLP should not continue to exceed the costs of the program and DCTF.





# Explore KRMP Recommendations

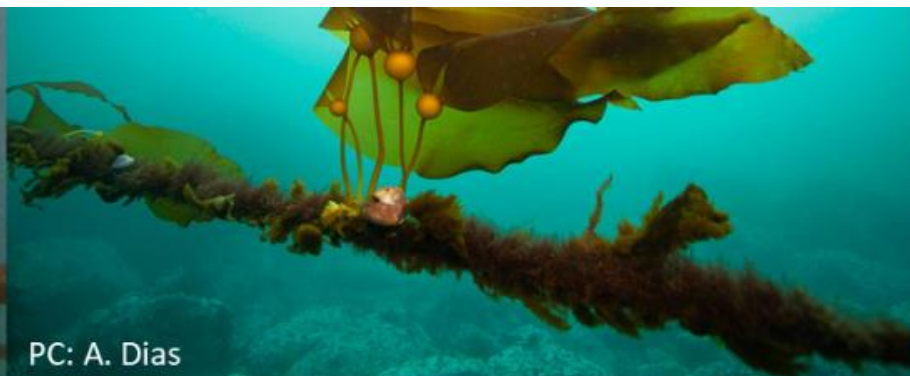
Consider what the CWG should recommend within the following categories

- Ecosystem-based management
- Defining kelp forest health
- Harvest management
- Restoration
- Research
- Adaptive management
- Community engagement
- Tribal considerations and co-management



# KRMP Looking Ahead

- Next steps
  - Reminder, reimbursement form
  - Share if interest in sub working groups
  - KRMP update at MRC meeting in July 16-17
  - Circulate and review meeting summaries and draft recommendations
  - Discuss logistics for next meeting
- Share your feedback, lingering thoughts, and ideas





# KRMP Continued Communication



Questions, comments, or requests for additional KRMP information  
Email [kelp@wildlife.ca.gov](mailto:kelp@wildlife.ca.gov)



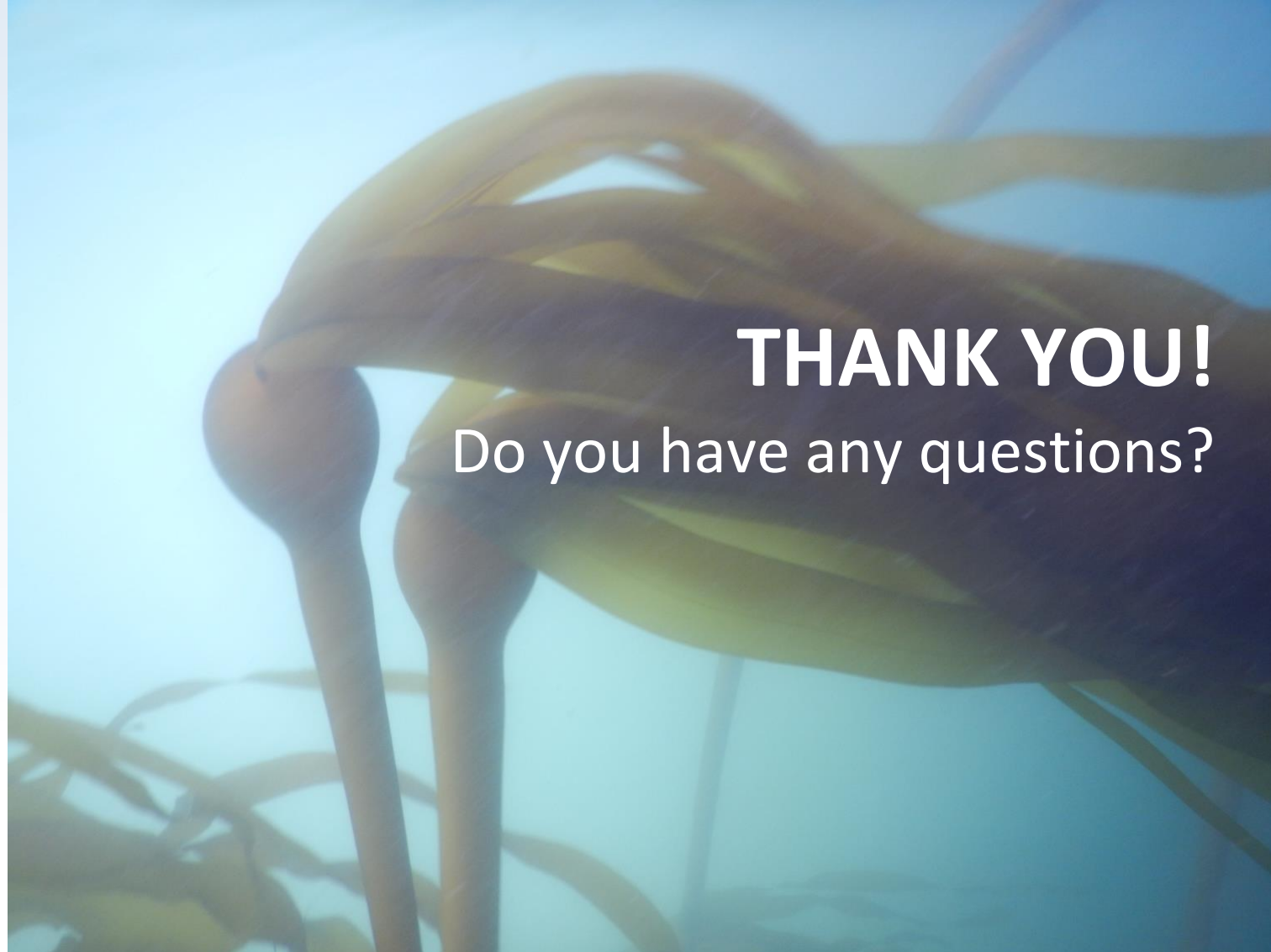
Information sharing amongst KRMP CWG Members  
Email: [krmp-cwg@gaggle.email](mailto:krmp-cwg@gaggle.email)



Tribal Specific Engagement Opportunities  
Email [kelp@wildlife.ca.gov](mailto:kelp@wildlife.ca.gov)



Updates, Informational Materials, Upcoming Opportunities and Events  
KRMP Website: <https://wildlife.ca.gov/Conservation/Marine/Kelp/KRMP>



**THANK YOU!**  
Do you have any questions?

Photo by Shelby Kawana, CDFW