

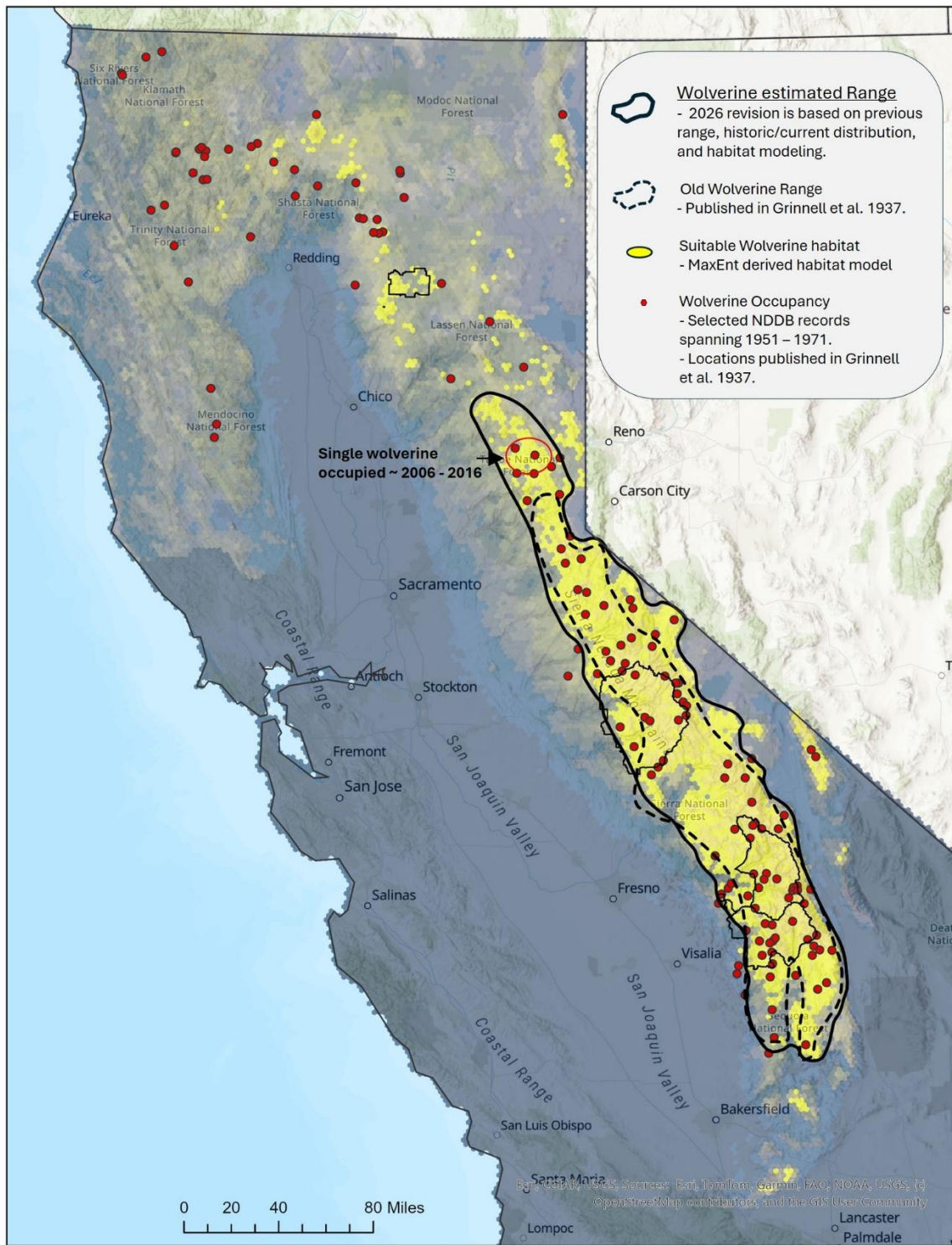
Gulo gulo
Wolverine
Species Habitat Model Metadata

Model developed by Chris Stermer of the California Department of Fish and Wildlife

Table 1. Area in Sq km.

Population	Updated Range	Grinnell et al. 1937 Range
California	28,599	19,322

Figure 1. An update to the estimated Range for the North American Wolverine (*Gulo gulo luscus*) in California. Updated Range is based primarily on the previous range described by Grinnell et al. (1937), and revised using contemporary distribution and MaxEnt (Phillips et al. 2006) derived habitat suitability modeling.



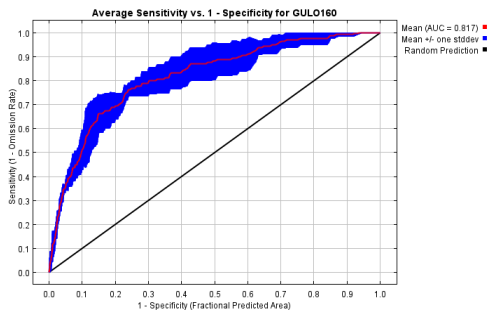
Appendix 1. MaxEnt results for the Wolverine Habitat Suitability Model

Training AUC = 0.843; Test AUC = 0.817

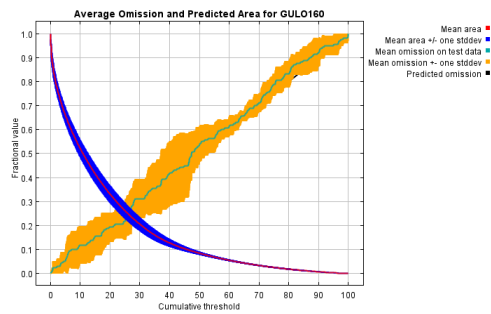
Relative contribution of environmental variables

Environmental Variable	Percent contribution	Permutation importance
Vancouverian Alpine Cliff, Scree & Rock Vegetation (m120)	69.5	62.2
Snow Water Equivalent (SWE)	19.3	7.3
Average Annual Temperature (Bio1)	7.1	20.8
Normalized Difference Vegetation Index (NDVI)	4.1	9.7

Receiver operating curve (ROC) curve



Assessment of omission/commission



Response curves indicating each variable's effect on the Maxent model

