



# Welcome!

---

Land Management Plan Stakeholder Engagement Meetings  
Ballona Wetlands Ecological Reserve

# Recording and Documentation

---

- Purpose of today is open dialogue; we want you to feel comfortable sharing honest feedback
- We are not recording
- We are not creating a transcript
- During discussion, screenshare will be utilized so you can see how your comments are captured



# Introductions

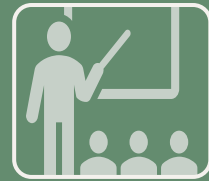
---

---

# Agenda



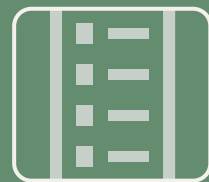
Etiquette and Reminders



“What is a Land Management Plan” Presentation



Discussion



Wrap Up and Next Steps

# Etiquette and Reminders

---

- Mute your microphone when not speaking
- Raise hand to request to speak
- Allow everyone a chance to participate
- Listen as well as speak
- Respect differing opinions





# LAND MANAGEMENT PLANNING

---

What is it?

What to expect?

How to engage?



# What is a Land Management Plan?

---



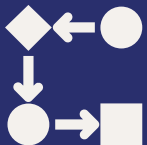
## Long term planning document

- Intended lifespan 30-40 years



## Multi-year planning process

- Interdisciplinary and collaborative
- Bring together diverse internal and external perspectives



## Comprehensive Approach

- Infrastructure and Public Use
- Cultural Resources
- Physical and Natural Resources





# A Land Management Plan:

- A guidance document
- Defines a property's primary purpose(s)
- Outlines the management issues and opportunities
- Identifies goals and strategies for comprehensively managing the property.



# What are CDFW Lands?

---

# Type of Lands

---

- Wildlife Area
- • Ecological Reserve
- Fish Hatchery
- Public Access
- Undesignated
- Conservation Easements



# What is an Ecological Reserve?

---

- Designated by the California Fish and Game Commission
- Described in Title 14 FGC 630
  - All ecological reserves are maintained for the primary purpose of developing a statewide program for protection of rare, threatened, or endangered native plants, wildlife, aquatic organisms, and specialized terrestrial or aquatic habitat types.
  - Many not open to public use

---

# Our Mission

To manage California's diverse fish, wildlife, and plant resources, and the habitats upon which they depend, for their ecological values and their use and enjoyment by the public.



# What is the LMP Process?

---



# There are three components:



Resource  
Inventory

1 – 1.5 years



The Land  
Management Plan  
Document

1 – 2 years



California  
Environmental  
Quality Act (CEQA)

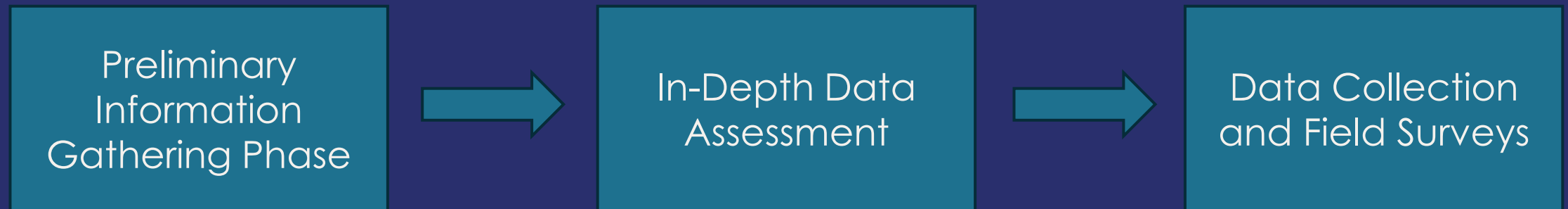
0.5 – 1+ years



# Resource Inventory

---

- Internal process that creates an inventory of resources present on, or in the vicinity of, the property.
  - Includes the physical, cultural, infrastructure, and public use resources in addition to the biological resources
- Highlights data gaps that need to be filled to better inform the management needs of the property.



# Contents of a Land Management Plan

Chapter 1: Introduction

Chapter 2: Environmental Setting and Management Considerations

Chapter 3: Management Plan



# Chapter 1: Introduction

Provides an overview of the property and the planning process

- Where is this property located?
- Why was this property acquired?
- What is the purpose of the Management Plan?
- Are there any relationships to other existing plans?
- Who did we consult with during the planning process?



---

# Chapter 2: Environmental Setting and Management Considerations

Provides an overview of resources present on the property followed by management issues and opportunities

- How do factors such as topography and hydrology affect management?
- What sensitive species exist on the property?
- How was the area used in the past? Currently?



# Chapter 3: Management Plan

Builds upon the background information from Chapter 1 and the analysis in Chapter 2 to create Goals and Strategies

- What are some challenges with the property?
- What are some management opportunities to solve those?



---

# Example: Community Science and Research

## Goal

- Promote community science and education through engagement with educational institutions and outreach.

## Strategies

- Promote community science reporting using tools such as iNaturalist and eBird.
- Provide opportunities for community engagement such as Biodiversity Day events and volunteer restoration activities.
- Encourage local schools to participate in monitoring using visits to the Reserve and computers in the classroom.
- Develop partnerships with educational institutions to conduct research that will benefit students while helping the Department achieve its resource protection and management goals.

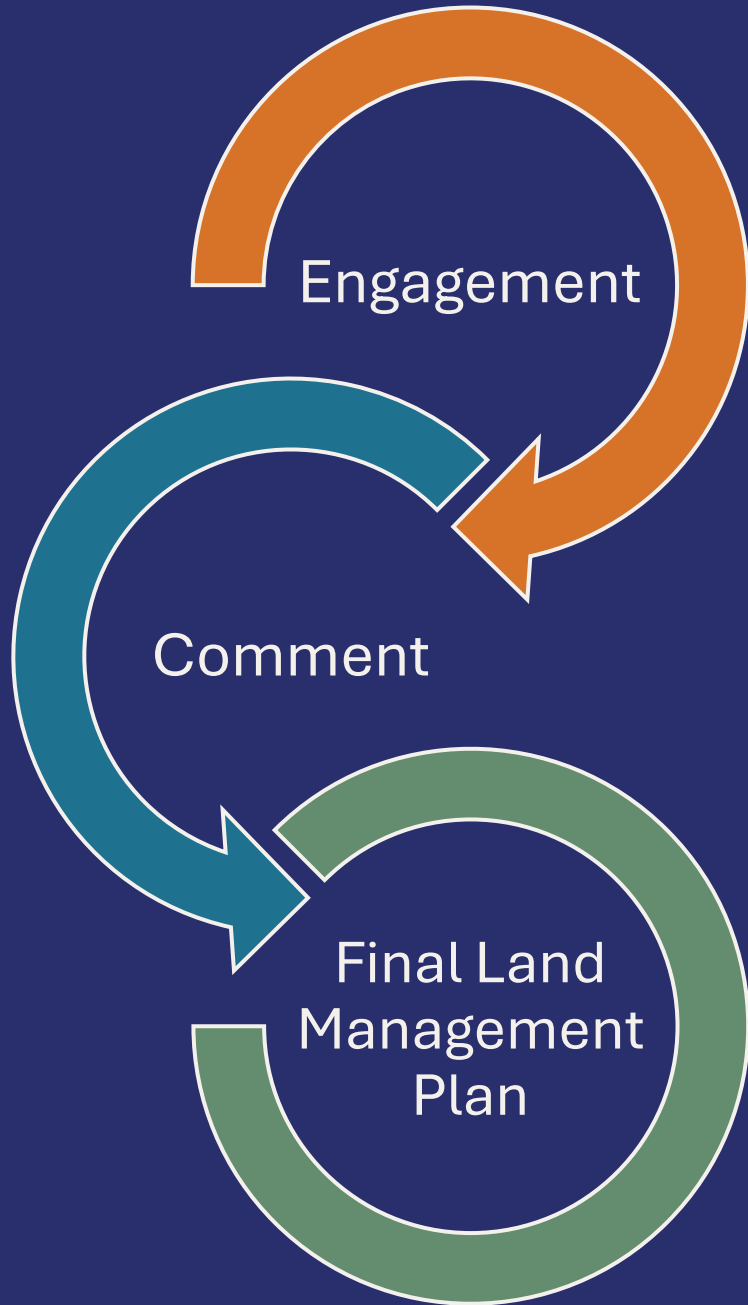
# California Environmental Quality Act

---

- The LMP is a project under CEQA
- CEQA requires public entities to:
  - Disclose and evaluate the potential significant environmental impacts
  - Adopt all feasible mitigation measures to reduce or eliminate those impacts
- Specific document yet to be determined
- If you want to learn more, Governor's Office of Land Use and Climate Innovation:  
<https://lci.ca.gov/ceqa/getting-started/>

# How Can I Get Involved?

---



## Plan Development

- Join the email notification list
- Actively participate in our discussion
- Submit ideas

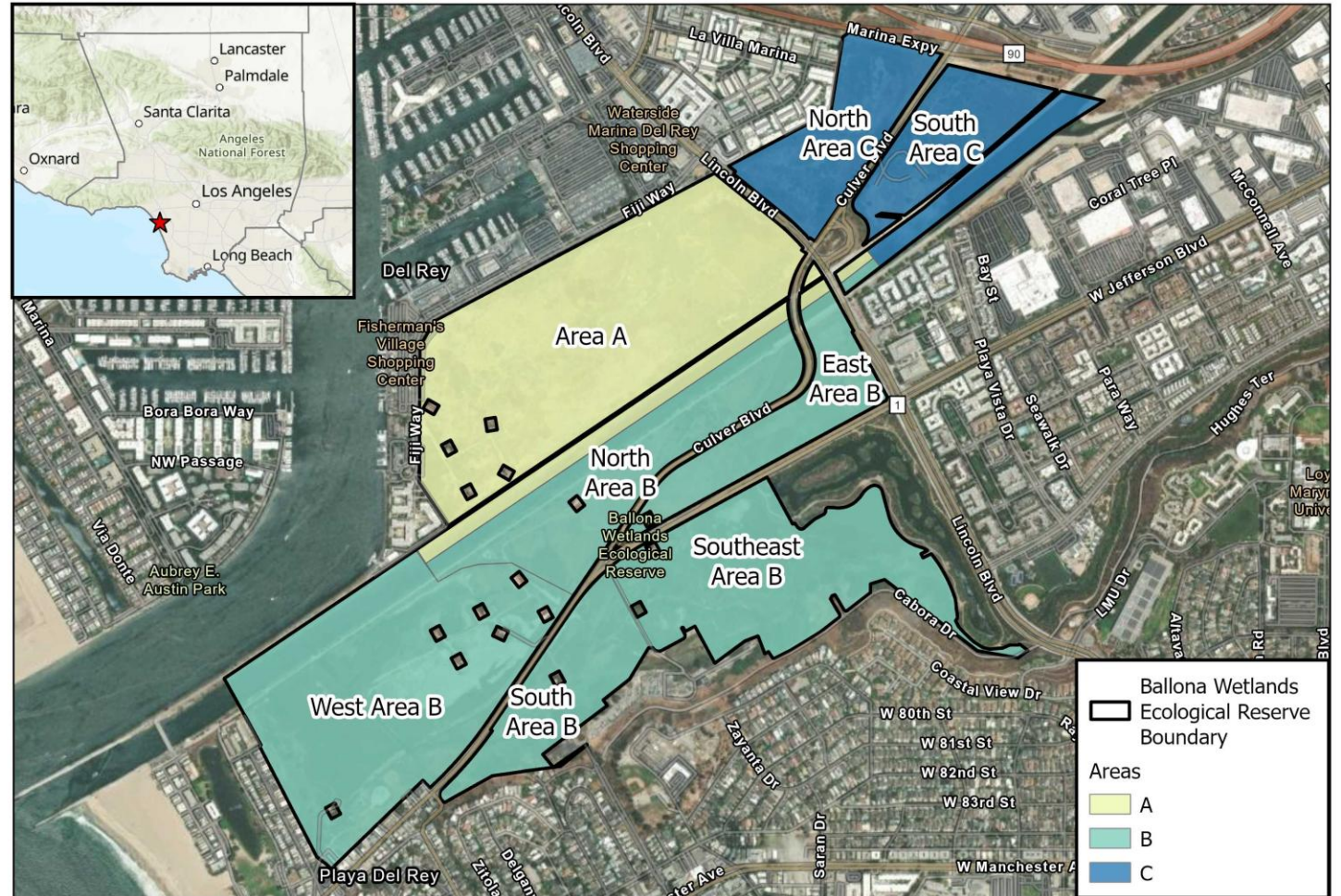
## Draft Document

- Review the Draft Document
- Participate in a meeting
- Submit written comments

## Final Document

- Available on the Property Webpage (under development)
- Enjoy the property!

# Ballona Wetlands Ecological Reserve:



## Ballona Wetlands Ecological Reserve Subareas

CDFW R5 4/29/2026



# Discussion

---

- Whiteboard
- Reminder of best practices
  - Mute your microphone when not speaking
  - Raise hand to request to speak
  - Allow everyone a chance to participate
  - Listen as well as speak
  - Respect differing opinions





# Next Steps

- Welcome additional thoughts via email, or follow-up meeting
  - [LandMgmtPlanning@wildlife.ca.gov](mailto:LandMgmtPlanning@wildlife.ca.gov)
- Public meeting this summer
- CDFW evaluation of engagement feedback and incorporation
- Completion of Draft Land Management Plan
  - CEQA process
  - Tribal, stakeholder, and public comment period

