

# **Petition 33: Conserve healthy kelp forest habitat**

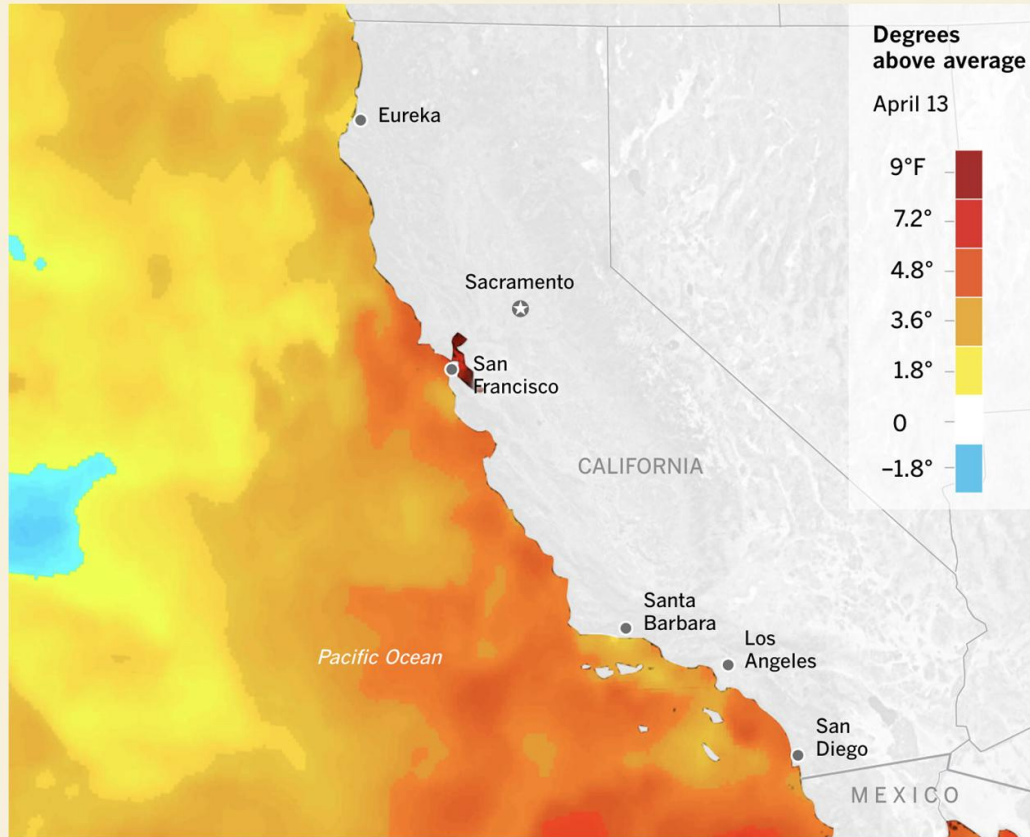
Expand Natural Bridges Marine Reserve  
New Pleasure Point Marine Conservation Area



*Origin of the proposal to conserve more of the last healthy kelp forest habitat*

## Record-breaking marine heat wave

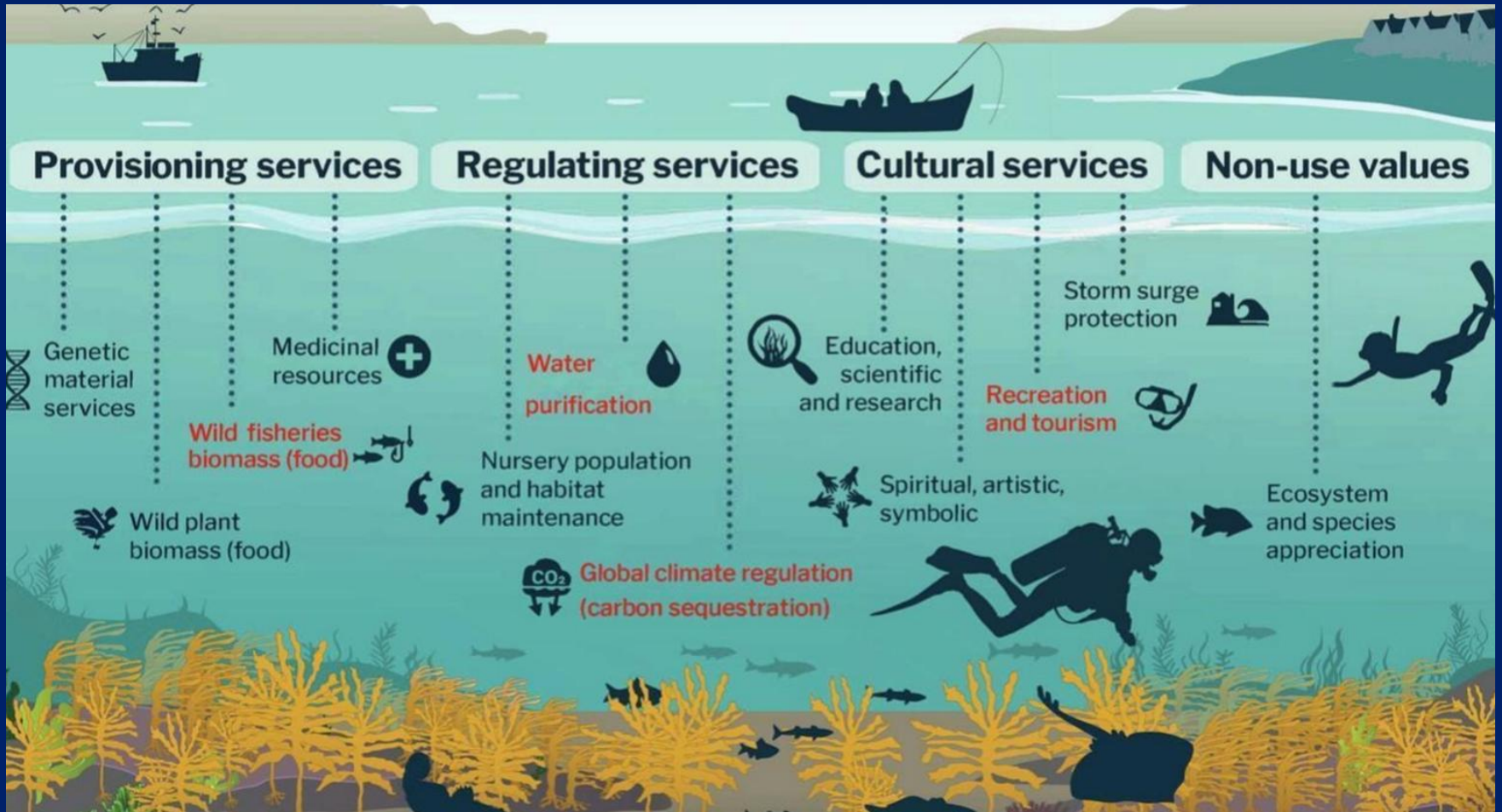
Sea surface temperatures are warming along the coast of California.



National Oceanic and Atmospheric Administration, Google Earth

Lorena Iñiguez Elebee LOS ANGELES TIMES

*Changes since first Marine Protected Area Network was created- Marine Heatwave- the Blob, 2019, 2026*



*Kelp forests are vital for our coast. Conservation over restoration.*



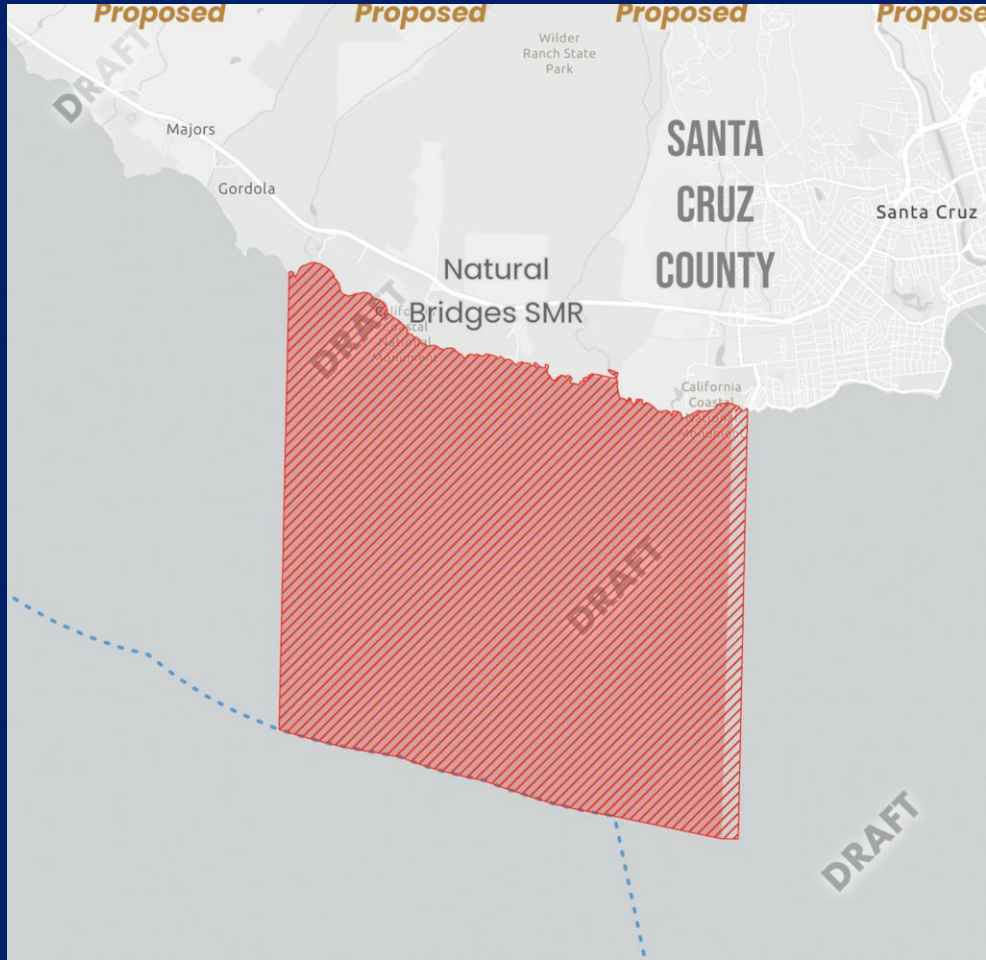
*Natural Bridges Marine Reserve proposal: Expand to encompass healthy kelp forest, sandy bottom  
Current size- .58 sq miles, proposal: 14.5 Sq miles*



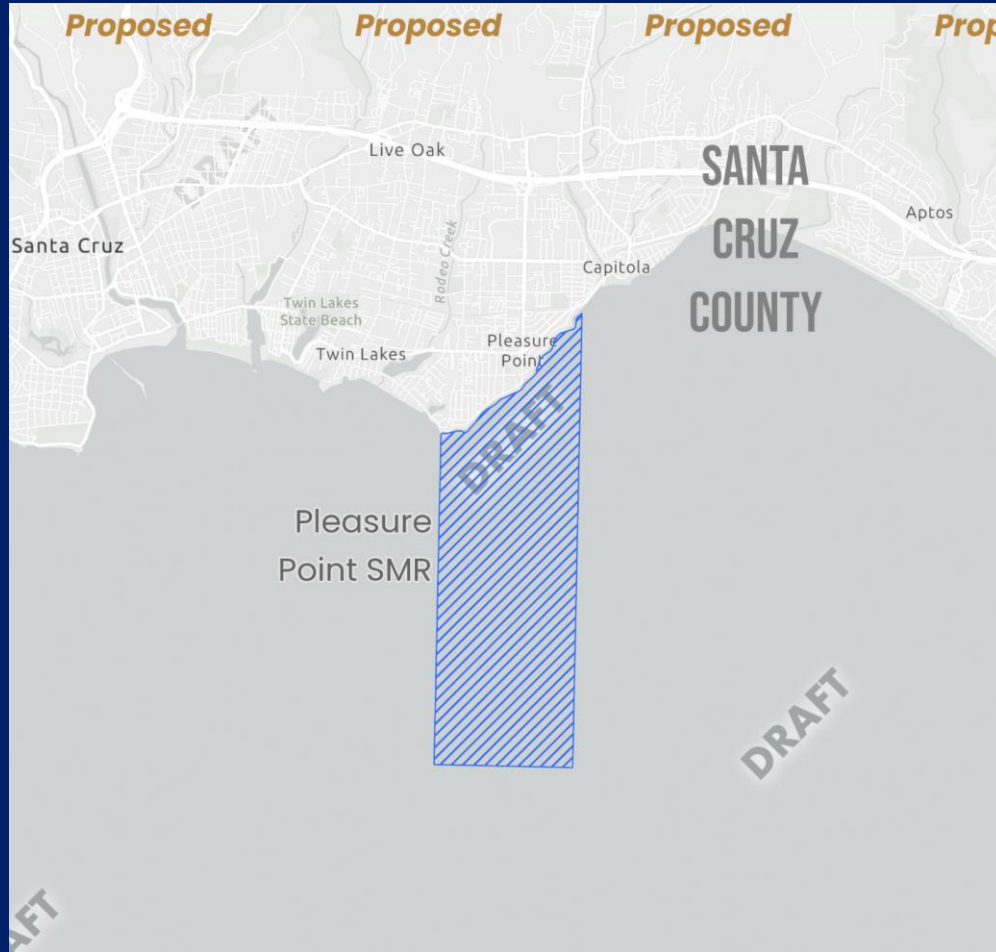
*Pleasure Point: New Marine Conservation Area proposal*  
*Proposed: 3.2 Sq Miles*



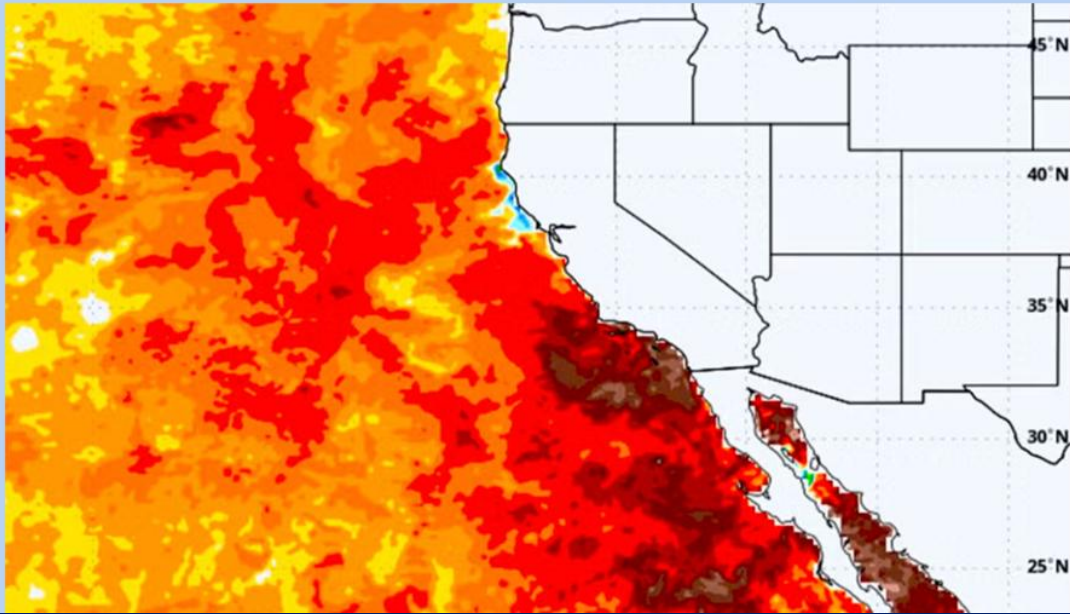
*Address gap - Distance between Ano Nuevo and Monterey Peninsula- 79 nautical miles*



*Natural Bridges reserve- amendment to include the area next to the Natural Bridges state beach*



*Pleasure Point Amendment- allow hook and line and spear fishing from shore or non motorized boats.  
Level of protection analysis/ MPA guide- recreational fishing impact question*



News

## Record-Breaking Marine Heatwave 'Blob' Returns to West Coast

NOAA says a massive marine heatwave known as the 'Blob' has returned to the West Coast, with a potential 'Godzilla' El Niño set for next season.

Mar 24, 2026 4:49 PM EDT



By Dashel Pierson Managing Editor, SURFER

*Marine heat wave- current- intense and getting more frequent in the future*



**Support:**  
**50+ marine scientists**  
**40+ non profit organizations**  
**30K+ Californians**  
**Small businesses- esp**  
**recreation**





**PPIC**

PUBLIC POLICY  
INSTITUTE OF CALIFORNIA



STATEWIDE SURVEY · JULY 2024

## PPIC Statewide Survey: Californians and the Environment

**55. Do you favor or oppose expanding California Marine Protected Areas—or MPAs—to protect fish, wildlife, and their habitat off the California coast?**

81% favor

18% oppose

1% don't know

*Over 80% of Californians support expanding marine protected areas. Support is higher in coastal California.*