

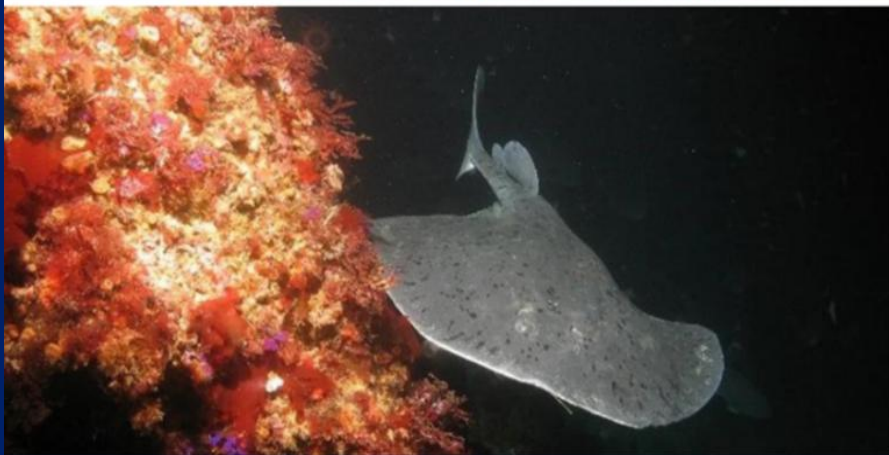
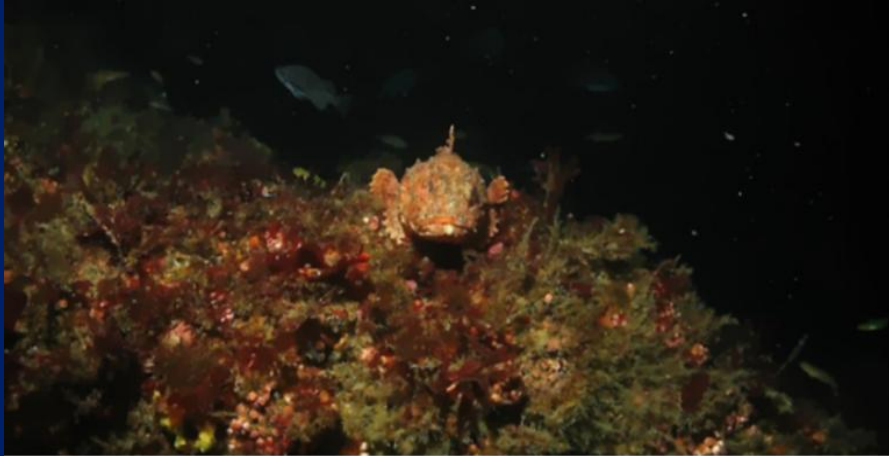


# Petition 34: Strengthen and simplify enforcement

Farnsworth Bank Marine Protected Areas at Catalina Island

April 2026

# Farnsworth Offshore SMCA



CDEW/MAPE | Used by permission

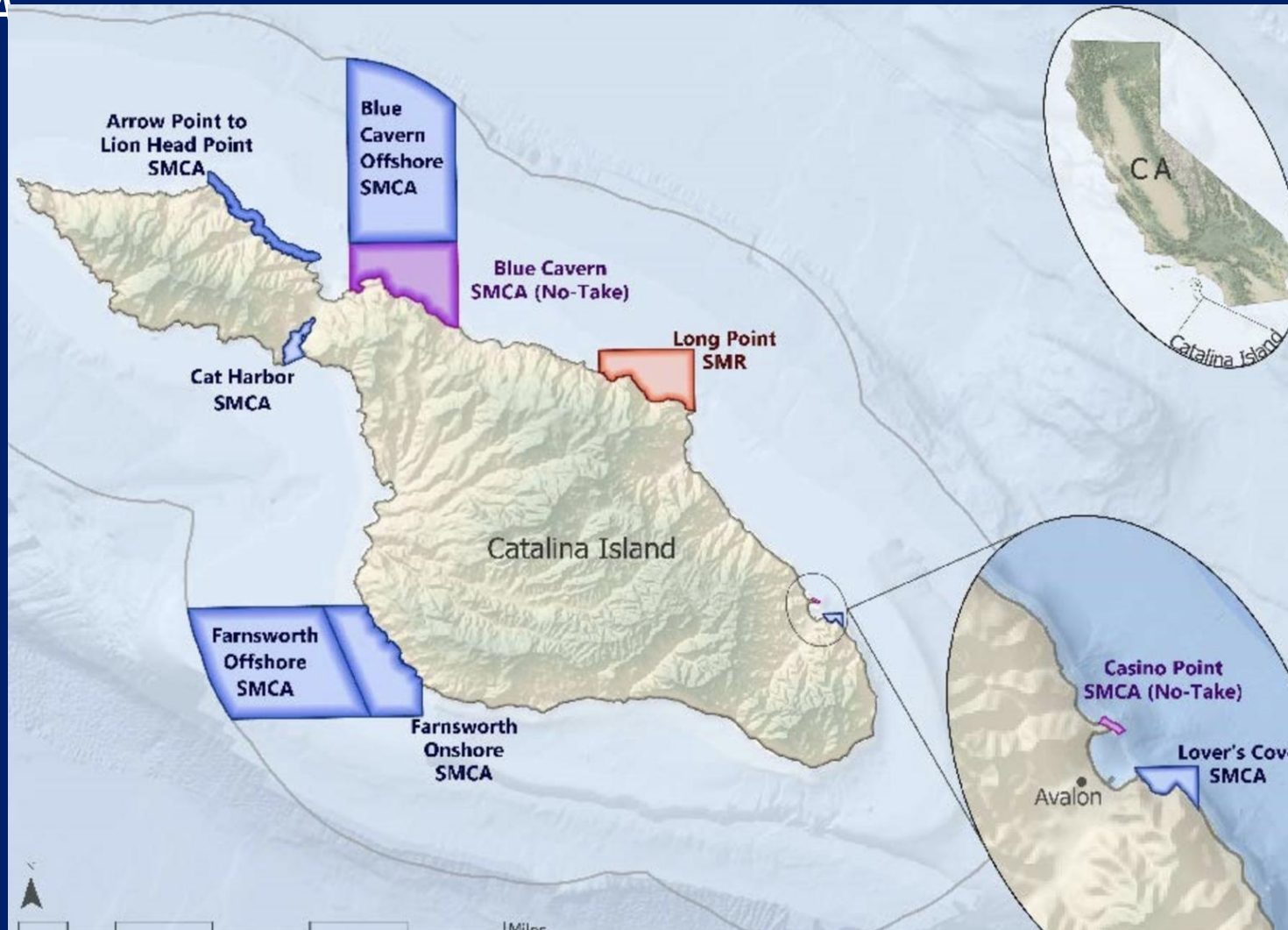


Photo by C. Allison

*Farnsworth Onshore SMCA*

**ENVIRONMENTCALIFORNIA**

# Farnsworth SMCA- onshore and offshore SMCA



# MPA compliance & enforcement is essential to achieve conservation



Photo by M.Winscher

Two most important compliance-related questions for MPAs:  
where are they, and what do they allow?

# Farnsworth MPA: Compliance problems

- The Decadal Management Review identified enforcement as a crucial factor in MPA effectiveness.
- Both SMCAs at Farnsworth Bank allow several gear types and species to be targeted, with some slight differences between the two areas.
- The regulations themselves and also the regulation differences are challenging to understand, creating confusion and unintentional regulation violations.
- Commercial passenger fishing vessels (also known as “party boats”) are also often seen illegally fishing in Farnsworth Onshore SMCA, moving out if they see a patrol boat approaching
- Based on community concerns voiced during the Catalina Community Compliance Forum

# MPA Collaborative Vetted Regulation

## Recommendations

Los Angeles (Catalina Island)	<a href="#">Farnsworth Onshore SMCA</a>	Rec take by spearfishing of white seabass and pelagic finfish; marline, tunas and dorado by trolling and market squid by hand held dip net. Commercial take of swordfish by harpoon, coastal pelagics by roundhaul net, brail gear and light boat	More difficult to assess whether poaching is occurring on the backside. Challenging/confusing for fishers
Los Angeles (Catalina Island)	<a href="#">Farnsworth Offshore SMCA</a>	Rec take of pelagic finfish by hook and line or by spearfishing; white seabass by spearfishing; marlin, tunas and dorado by trolling and market squid by hand held dip net. Commercial take of swordfish by harpoon, coastal pelagics by roundhaul net, brail gear and light boat	CPFVs (party boats) are seen illegally fishing in Farnsworth Offshore SMCA, moving out if they see the CDFW patrol boat approaching. Regs restricting take of rockfish can be confusing for fishers/challenging to prove rockfish on board was taken outside

The difference between the two sets of rules is hard to detect—-> confusion about what is and isn't permitted, increased chances of accidental violations, and possible disincentive for enforcement

New proposed language: “It is unlawful to injure, damage, take, or possess any living, geological, or cultural marine resource, EXCEPT: Recreational take of white seabass and pelagic finfish (northern anchovy, barracudas, billfishes, dorado (dolphinfish), Pacific herring, jack mackerel, Pacific mackerel, salmon, Pacific sardine, Pacific bonito, and yellowtail by spearfishing.”

***New Proposal: Simplify and Strengthen protections***

**Growing Support:**  
**40+ non profit organizations**  
**30K+ Californians**  
**Central coast small businesses**  
**40+ marine scientists from**  
**institutions include:**

