



Protect Point Sal

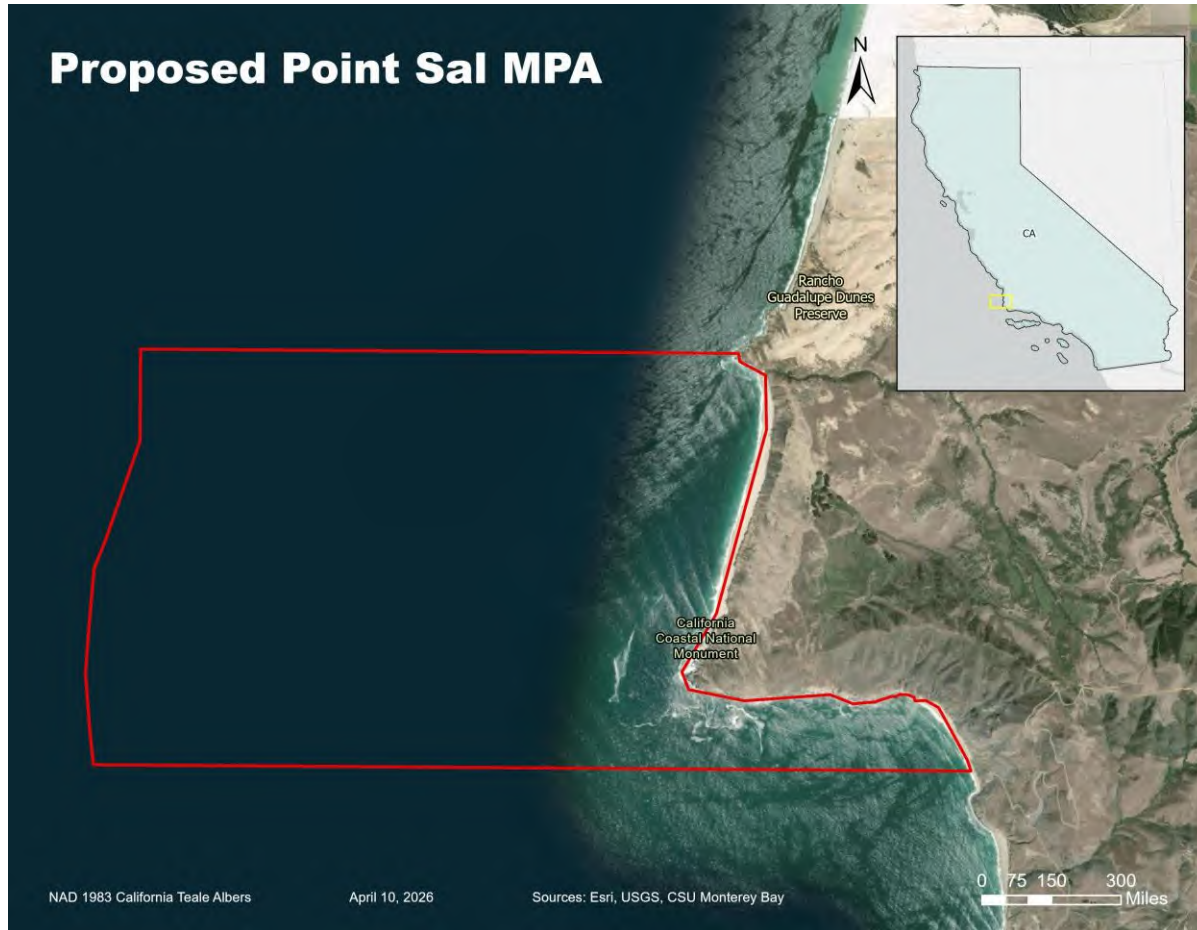
PROTECT SACRED CHUMASH WATERS



Petition 2023-28MPA

May 5th, 2026

Proposal Details



- **Area:** 9.18 square miles
- **Shore distance:** 4.03 miles
- **Proposed regulations:** No-take, with the exception of:
 - Recreational take of finfish from shore using hook and line
 - Take incidental to VSFB operations identified as mission critical
- Upon designation, **collaborative co-stewardship agreement** with NCTC and other interested Tribes
- Rename with a **Chumash place name** after consultation with Tribes

High Ecological Value

1. Lion Rock an important site for marine mammals and seabirds
2. Larval retention zone provides beneficial recruitment area for marine life
3. Diversity of habitats – rocky reef, sandy bottom, kelp forest, tidepools, sandy beaches
4. Intrinsic value as a healthy, ecologically intact area



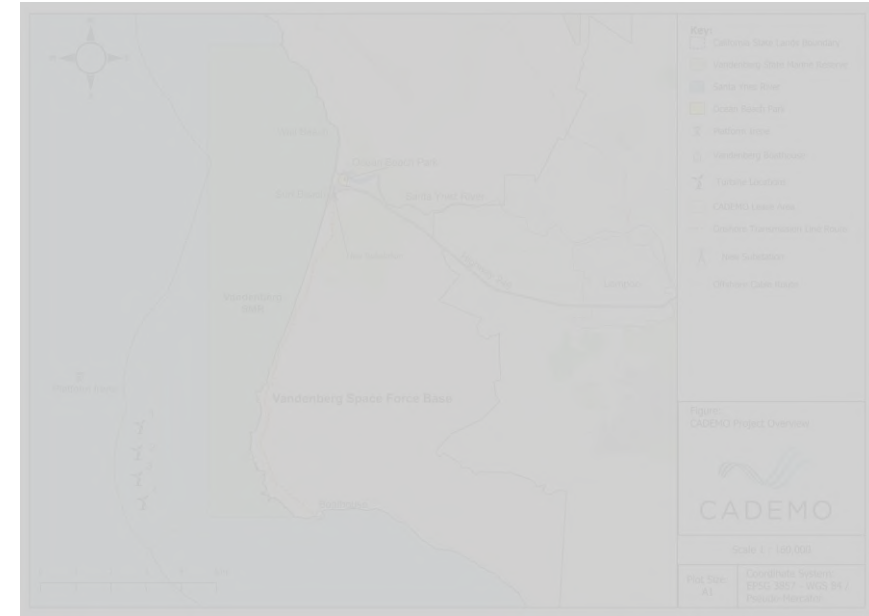
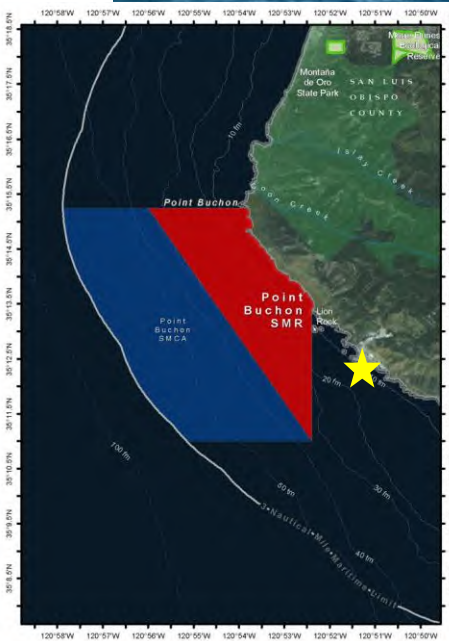
Credit: Phil Capitolo, UCSC



Regional impacts on marine habitats



Credit: "Mike" Michael L. Baird

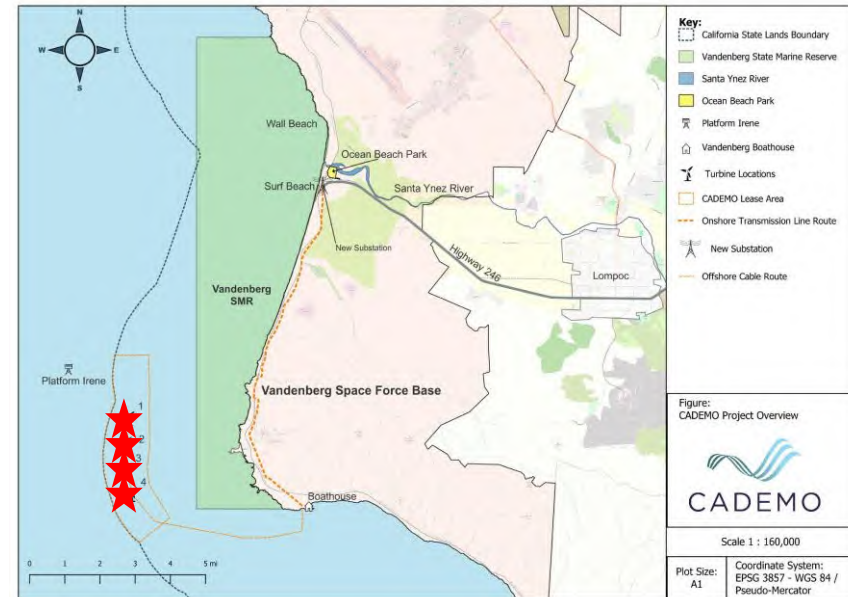


Point Buchon SMR/SMCA

- Diablo Canyon power plant once-through cooling system
- Kills 1.5 billion marine organisms per year



Regional impacts on marine habitats



Vandenberg SMR

- CADEMO project offshore wind development
- Unknown impacts of floating offshore wind farms



Level of protection



- Shore-based fishing allowance would lead to a 'moderate-low' level of protection under MLPA evaluation methods
- However, these methods assume "any allowed activity could occur at high intensity"
- **At Point Sal, this assumption does not reflect reality**
- This SMCA should be assigned a higher level of protection and count as a replicate site

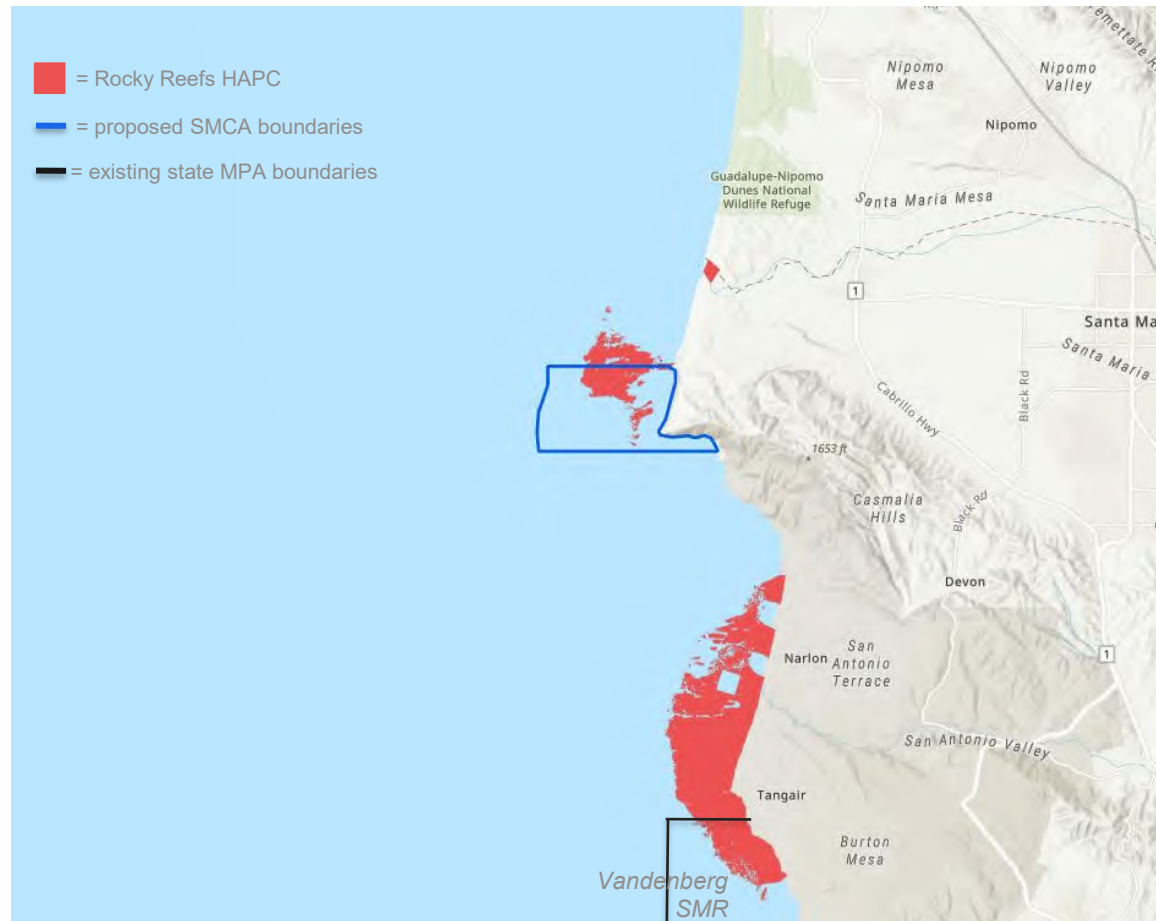
Fishing impacts



Credit: California State Parks

- SMCA represents a very small area of fishing blocks:
 - 4.4% of block 631
 - 7.9% of block 632
- VMS data shows most fishing takes place in federal waters
- Contains 0.4% of the area's fishable hard-bottom groundfish habitat

Essential Fish Habitat



Source: NOAA Essential Fish Habitat Mapper

- Rocky reef designated as a Habitat Area of Particular Concern
- HAPCs are areas that "represent high priority areas for conservation, management, or research, and **are necessary for healthy ecosystems and fisheries.**"
- Northern portion of reef would remain fishable, allowing access to spillover

Rare opportunity for “ridge-to-reef” conservation



Credit: LCSLO



Support

Tribal governments, organizations, and community members:

- Tolowa Dee-Ni' Nation
- Native Coast Action Network
- Sacred Places Institute
- Community members of the Coastal and Santa Ynez Bands of Chumash Indians

Government:

- City of Guadalupe
- Senate President pro Tempore Monique Limón
- Assemblymember Gregg Hart
- Assemblymember Steve Bennett
- SB County Supervisor Roy Lee
- U.S. Department of the Air Force

Business, NGO, and community support:

- Guadalupe Business Association, Patagonia, and many local businesses
- A growing list of organizations that include ENGOs, recreational fishing interests, environmental justice organizations, and community groups (42 organizations as of April 30);
- 488 signatories to a local public petition
- Over 7,000 signatories to a NRDC petition
- Over 200 local K-12 and Cal Poly students
- Marine scientists including: Dr. Stephen Palumbi, Stanford University; Dr. Doug McCauley and Molly Morse, UCSB BOSL; Dr. John Steinbeck, Tenera Environmental; Dr. Dawn Murray, Antioch University; Point Blue Conservation Science

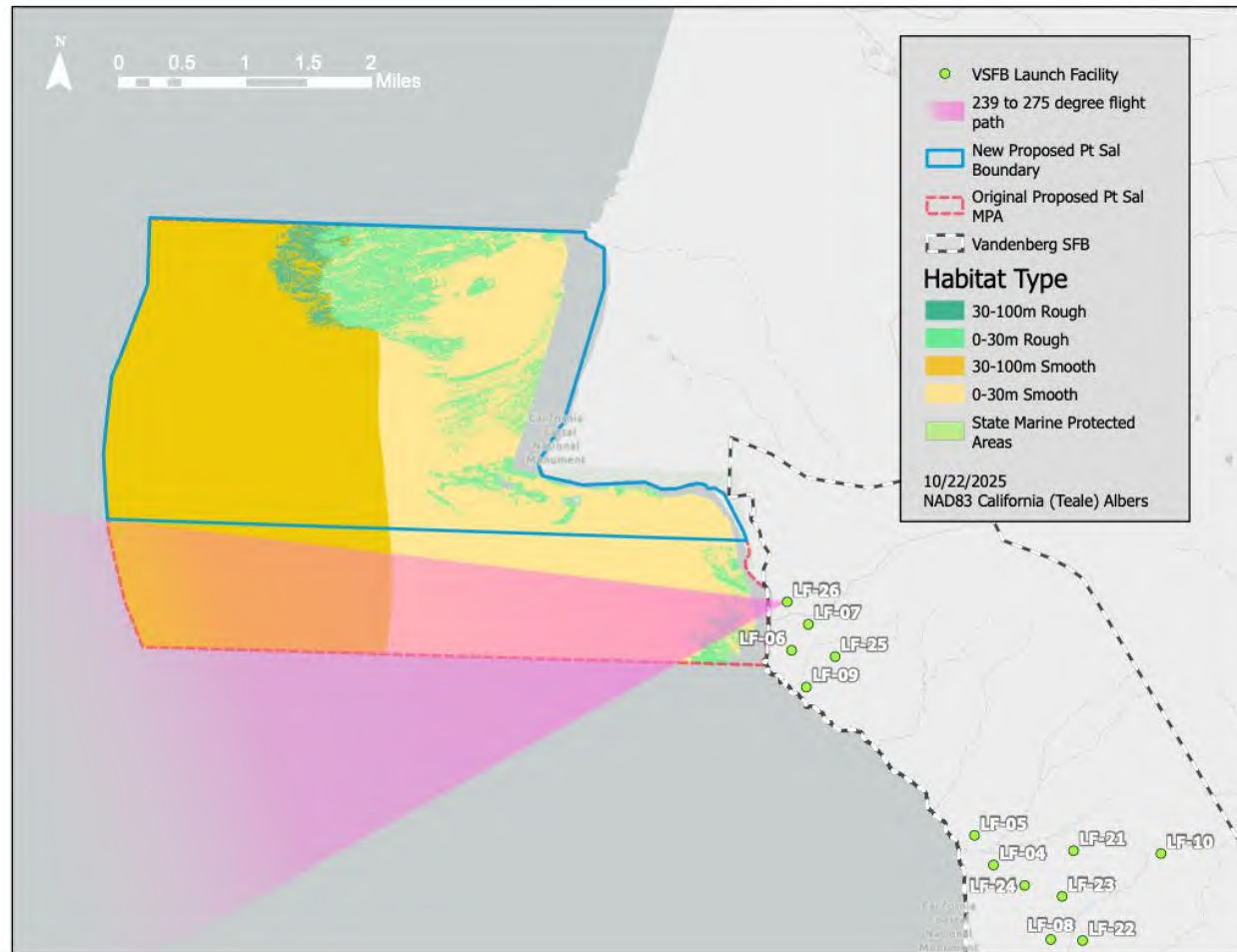


Thank you



////////////////////////////////////
**Supplemental slides
if needed for discussion**

Petition amendments

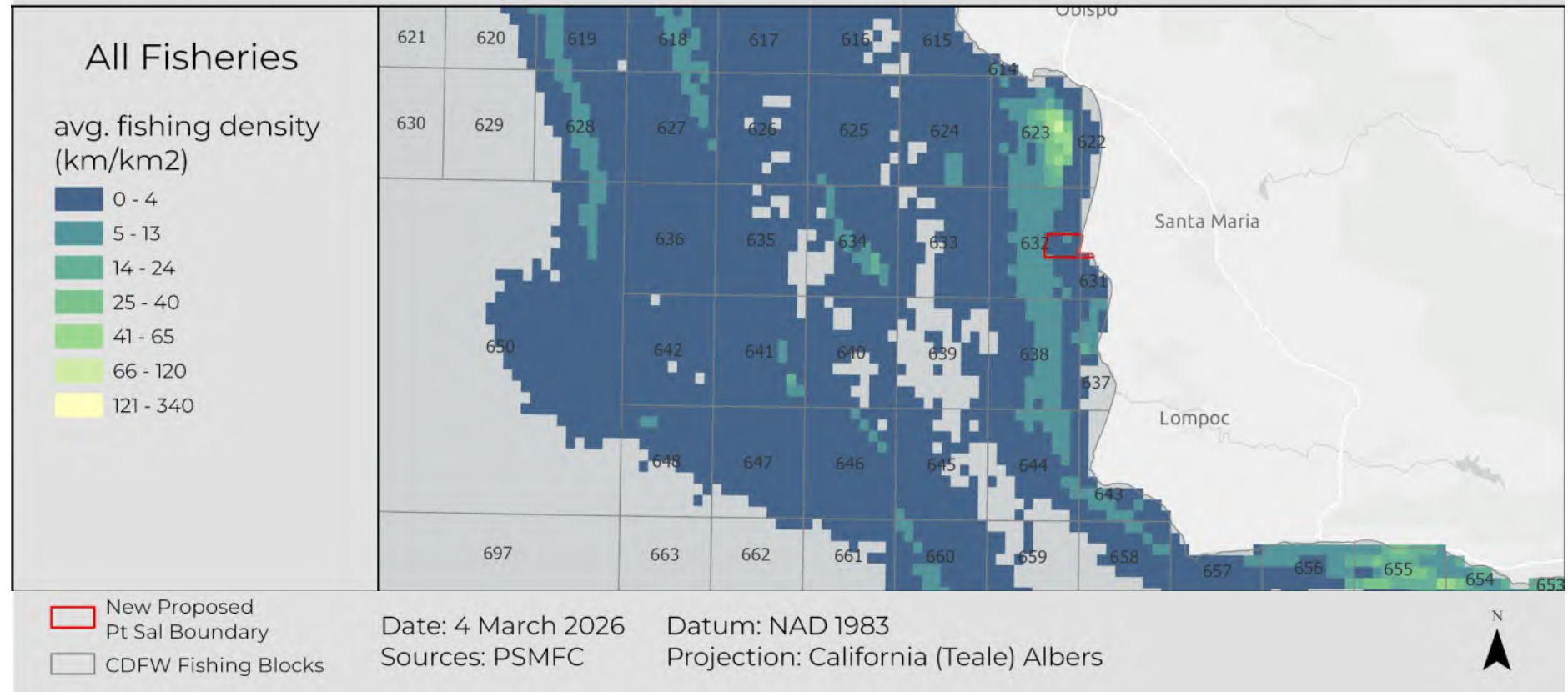


1. Allowed shore-based fishing to support low-impact fishing access for the public and **for all Chumash people, regardless of status**
2. Adjusted southern boundary to deconflict with mission critical Vandenberg operations

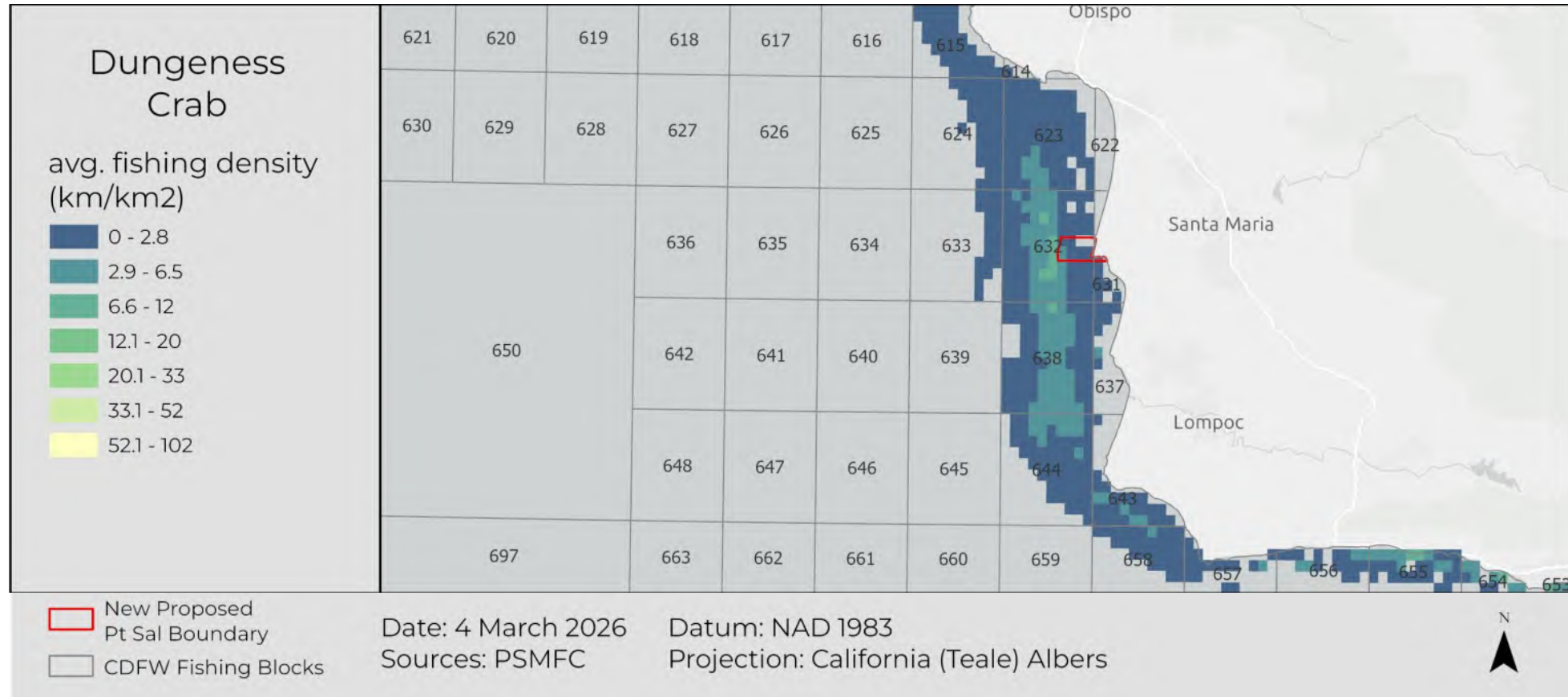
Potential impact to commercial fishing

- 4.4% of fishing block 631
- 7.9% of fishing block 632
- 0.4% of the area's fishable hard-bottom groundfish habitat

Fishing Effort Near Point Sal (VMS) 2010-2022



Potential impact to Dungeness crab fishery



Potential impact to groundfish fishery

