

# **Petition 33: Conserve healthy kelp forest habitat**

Expand Point Conception State Marine Reserve

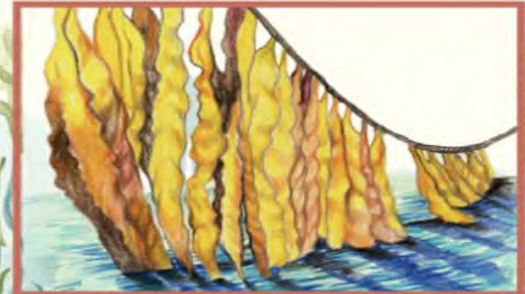


*New research: California has had thick healthy vibrant kelp forest up and down the coast for 32 million years*

# The many benefits of kelp



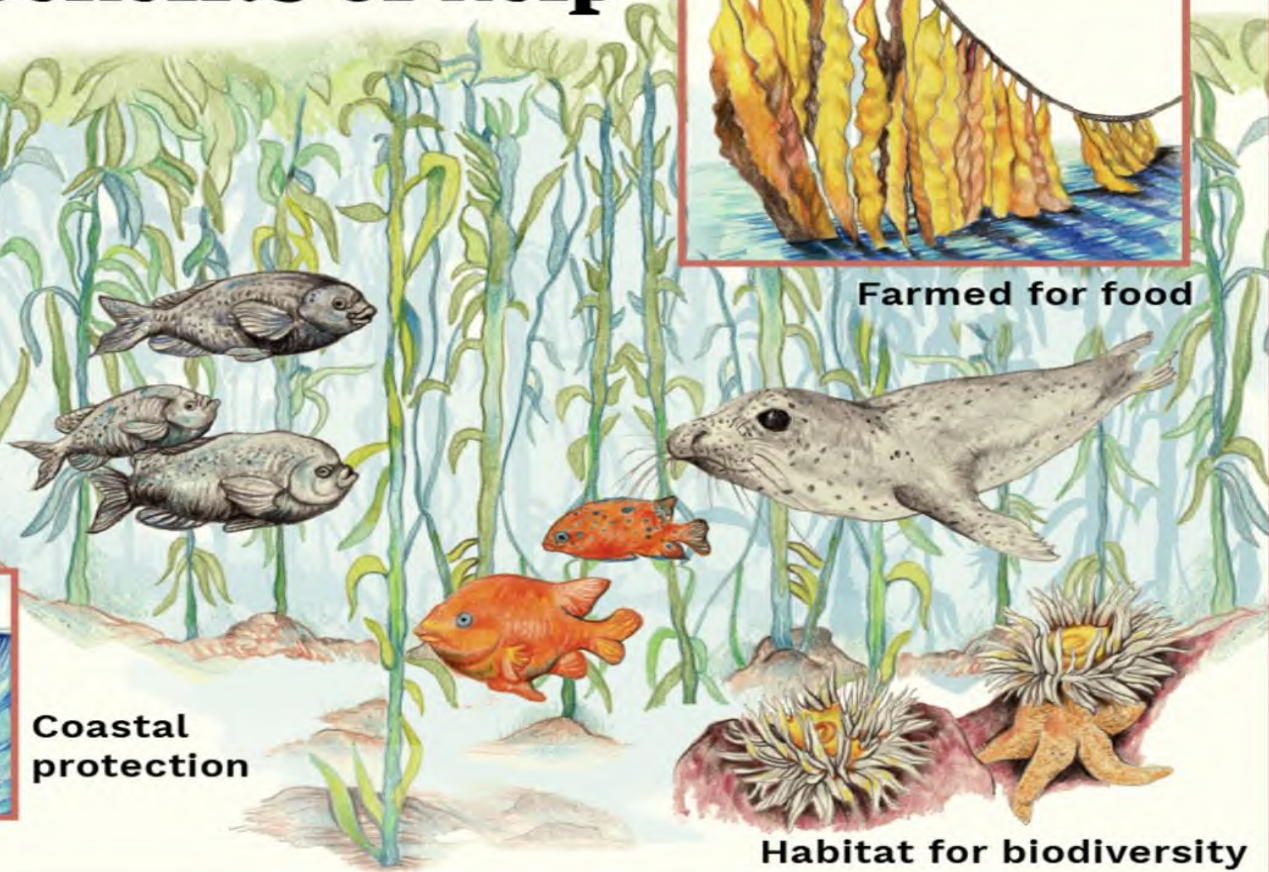
Removal of  
carbon & pollution



Farmed for food



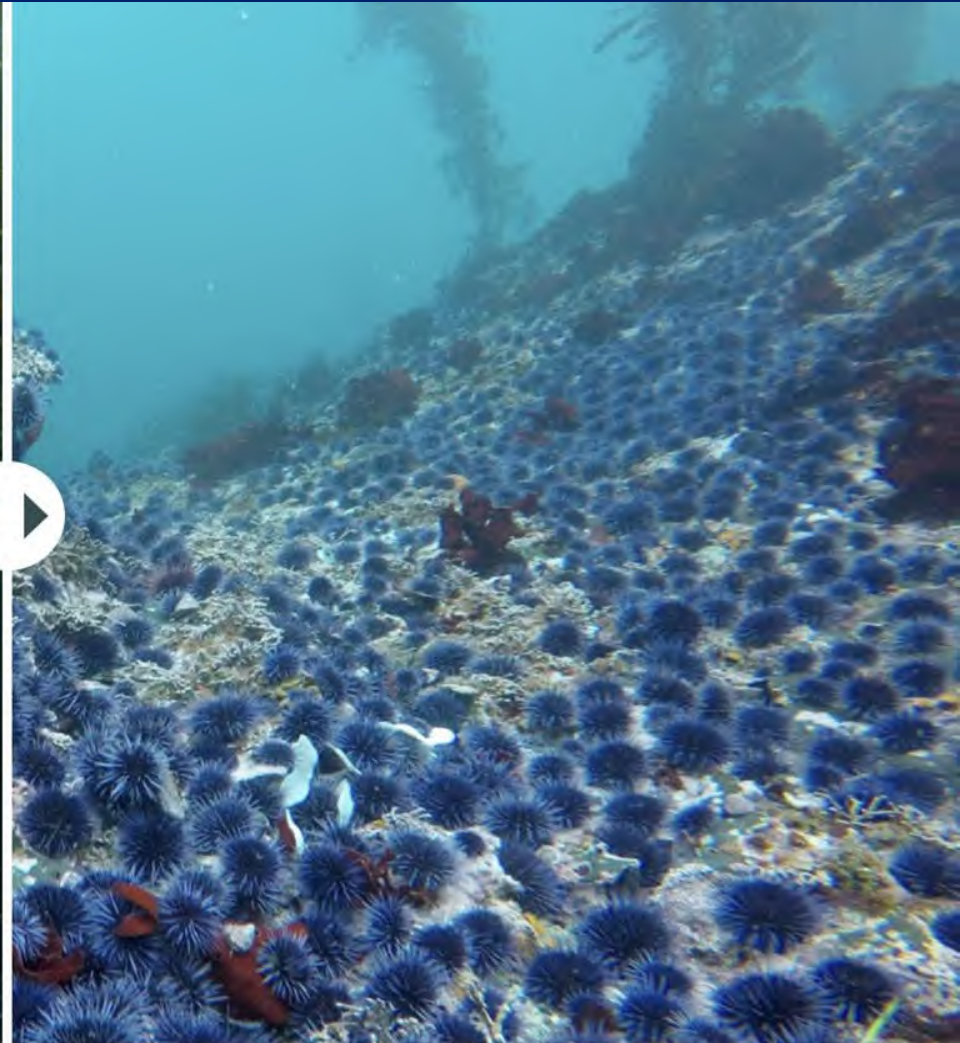
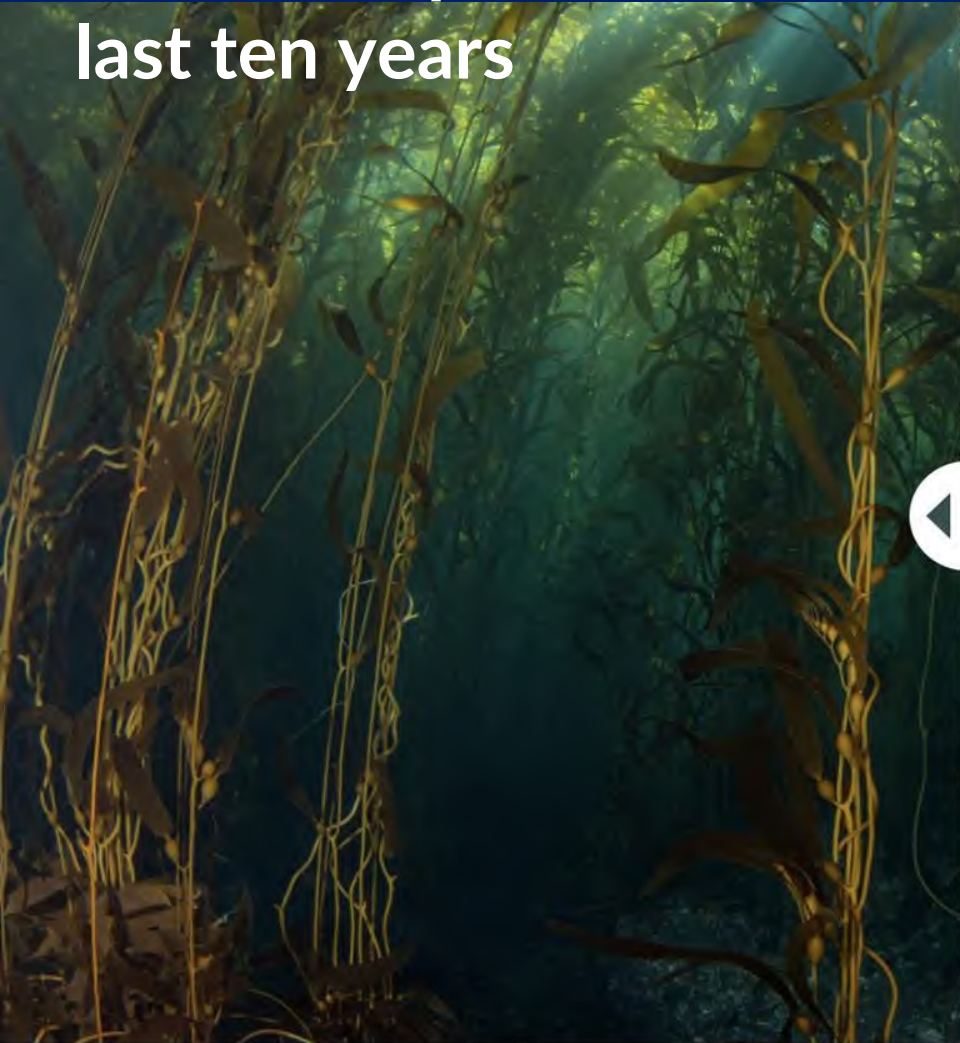
Coastal  
protection



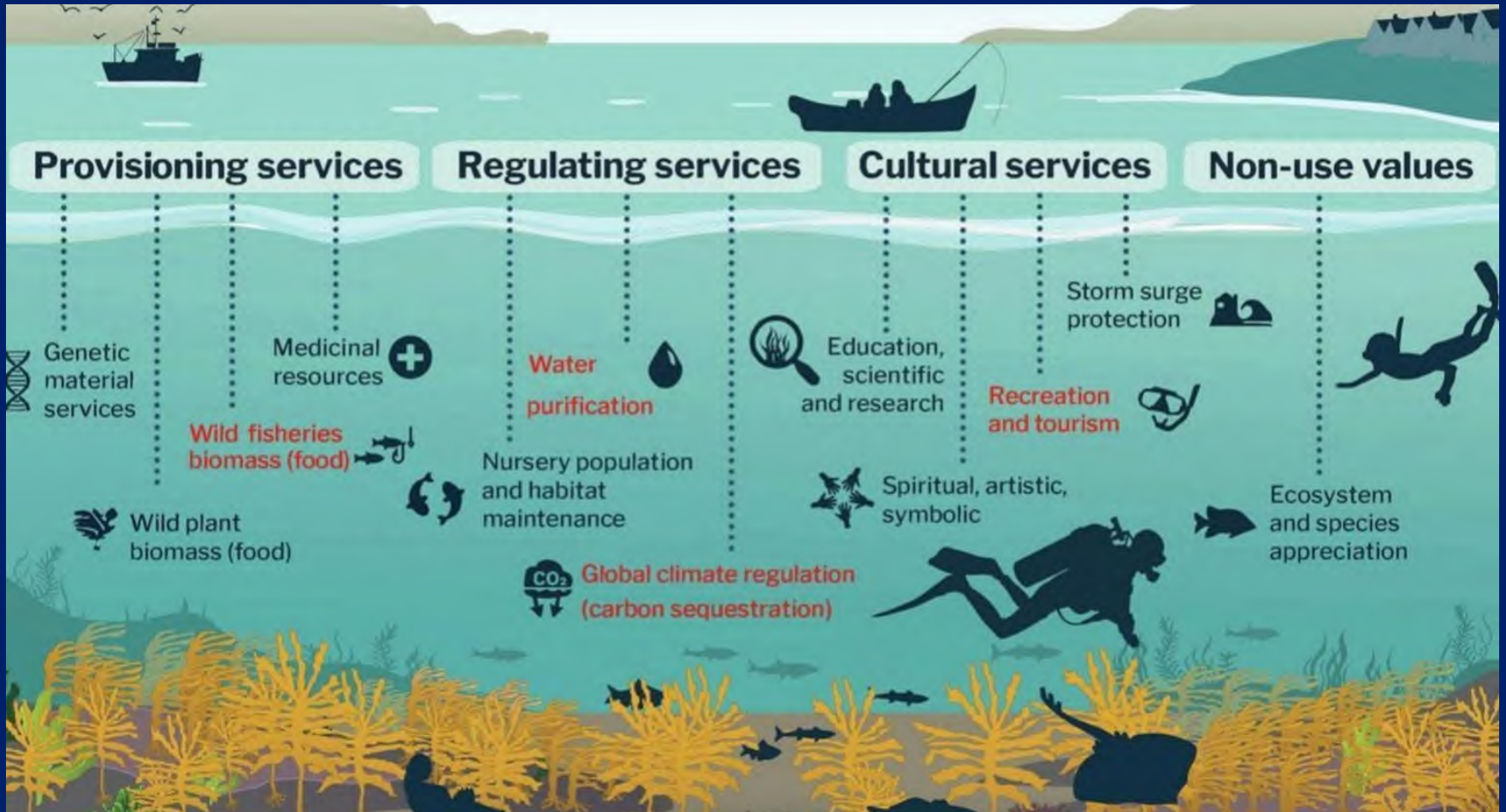
Habitat for biodiversity

Illustration: Ricardo Macía Lalinde / China Dialogue Ocean

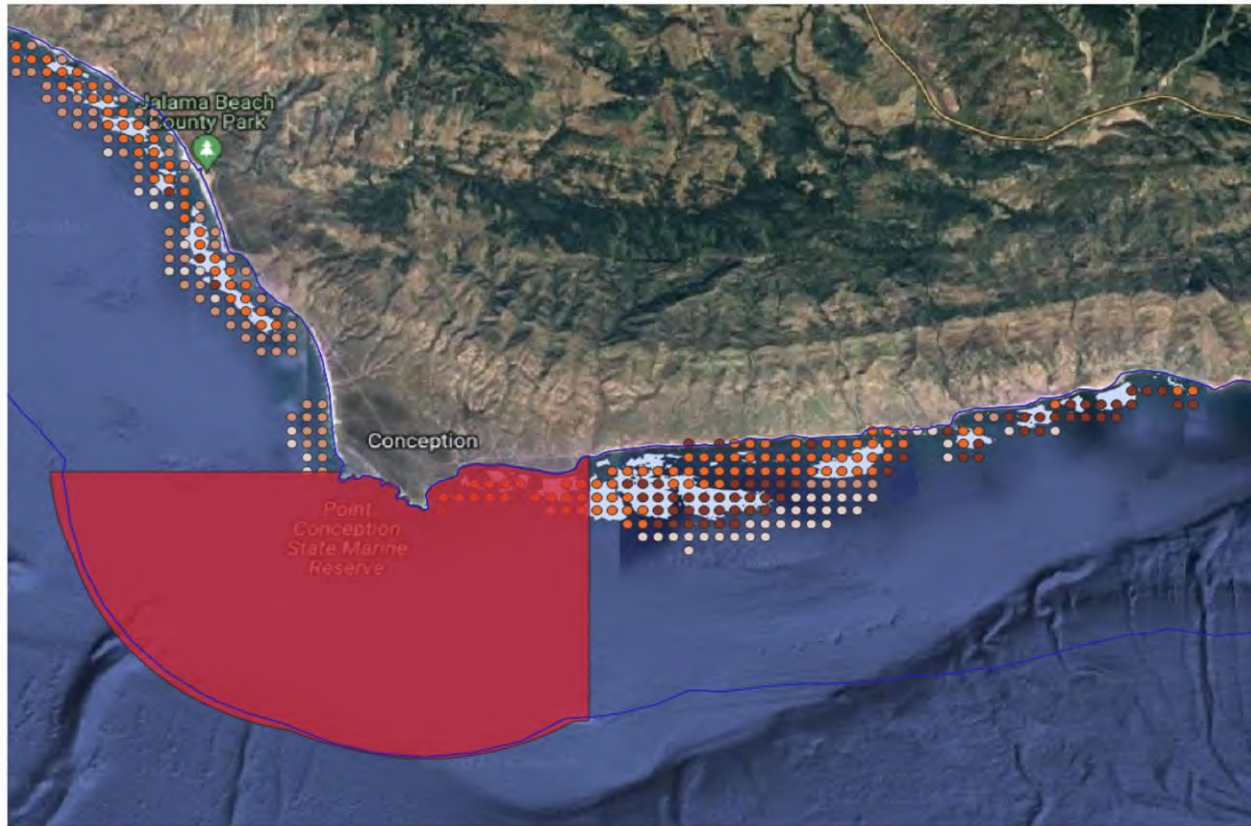
# 85% of kelp forest habitat lost in last ten years



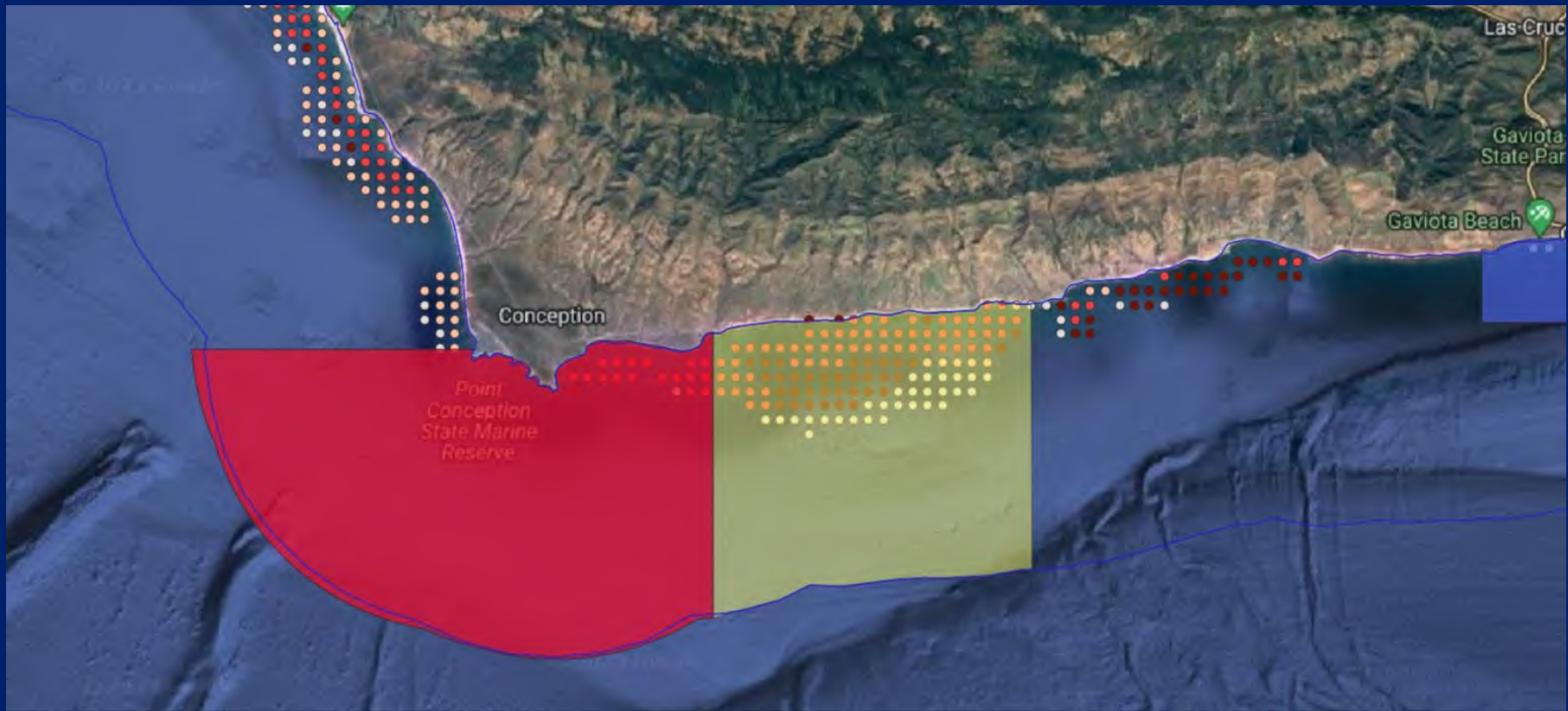
Left Photo: Douglas Klug; Right Photo: Steve Lonhart/NOAA



**Importance of marine conservation as well as restoration**  
**\$20 Million invested in restoration.**  
**Benefits of conservation too**

Point Conception SMR

*Point Conception- vibrant stable kelp forest to the east of the reserve.*



**Current MPA 22.5 Sq Miles- expand by 14.5 Sq miles= 37 Sq Miles**



STATEWIDE SURVEY · JULY 2024

## PPIC Statewide Survey: Californians and the Environment

**55. Do you favor or oppose expanding California Marine Protected Areas—or MPAs—to protect fish, wildlife, and their habitat off the California coast?**

81% favor

18% oppose

1% don't know

*Over 80% of Californians support expanding marine protected areas. Support is even higher in coastal California.*

**Growing Support:**  
**40+ non profit organizations**  
**30K+ Californians**  
**Small businesses**  
**50+ marine scientists from**  
**institutions include:**

