

Petition 33: Conserve healthy kelp forest habitat

Expand Channel Islands MPA at Gull Island, South Point MPA
to encompass healthy kelp forest



New research: California has had thick healthy vibrant kelp forest up and down the coast for 32 million years

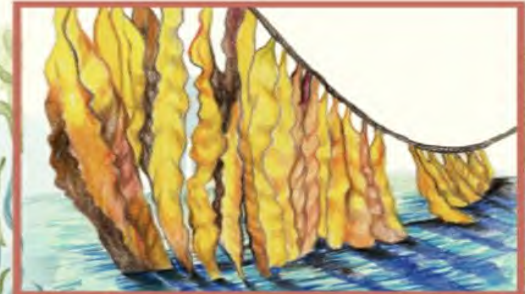
The many benefits of kelp



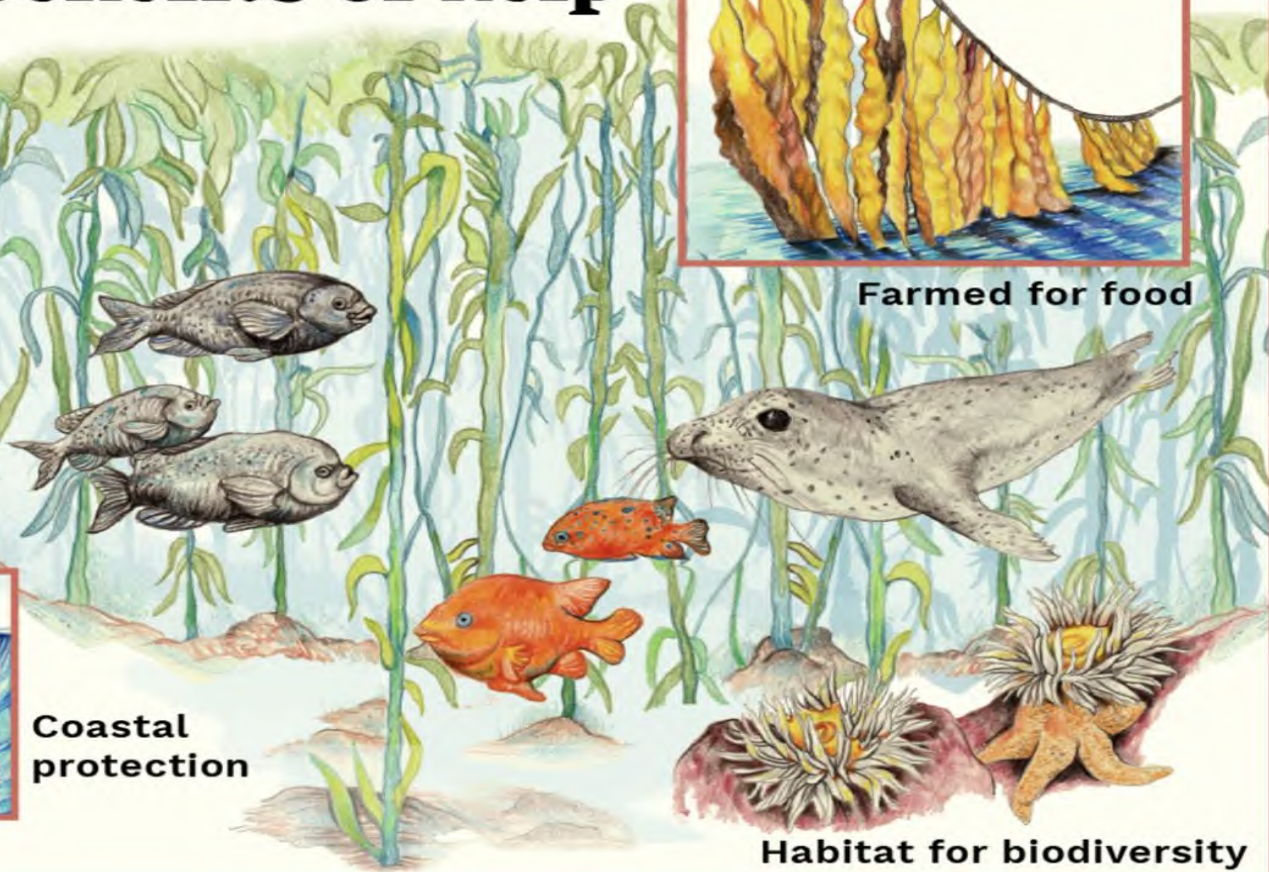
Removal of
carbon & pollution



Coastal
protection



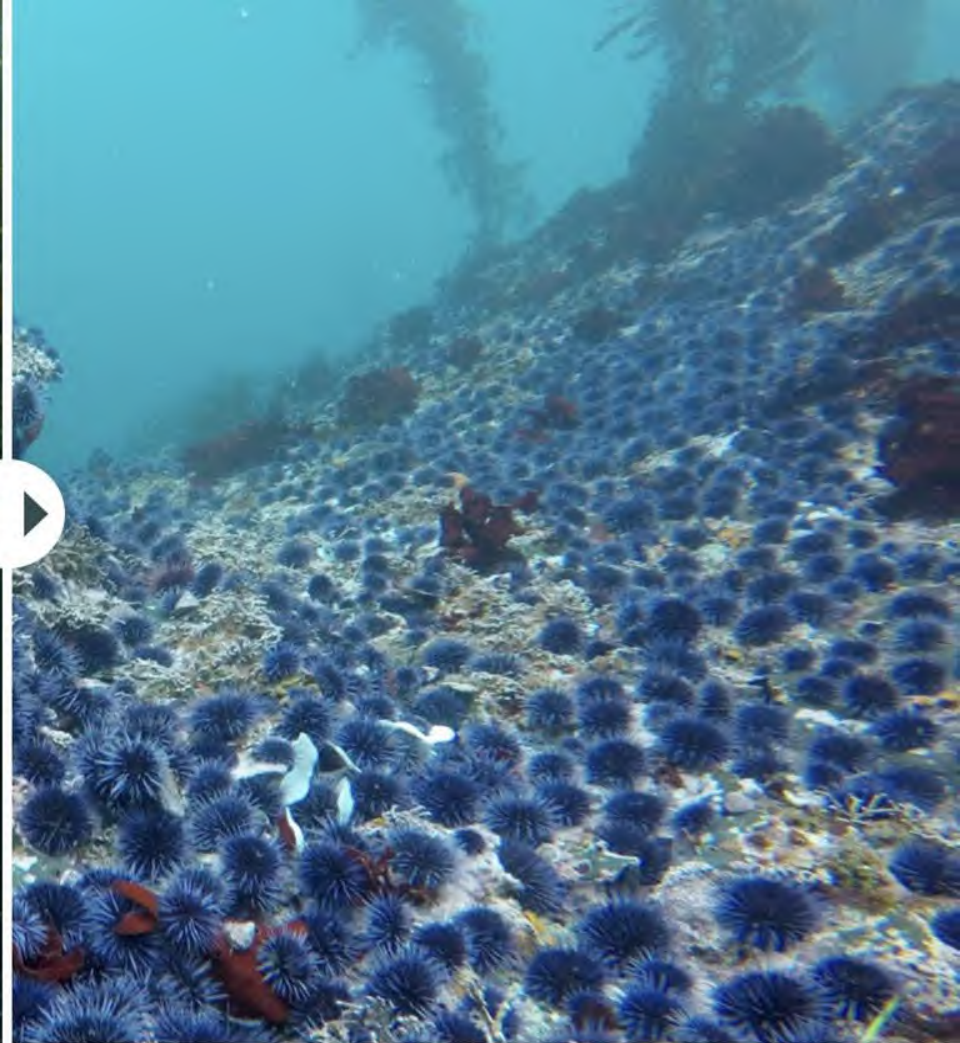
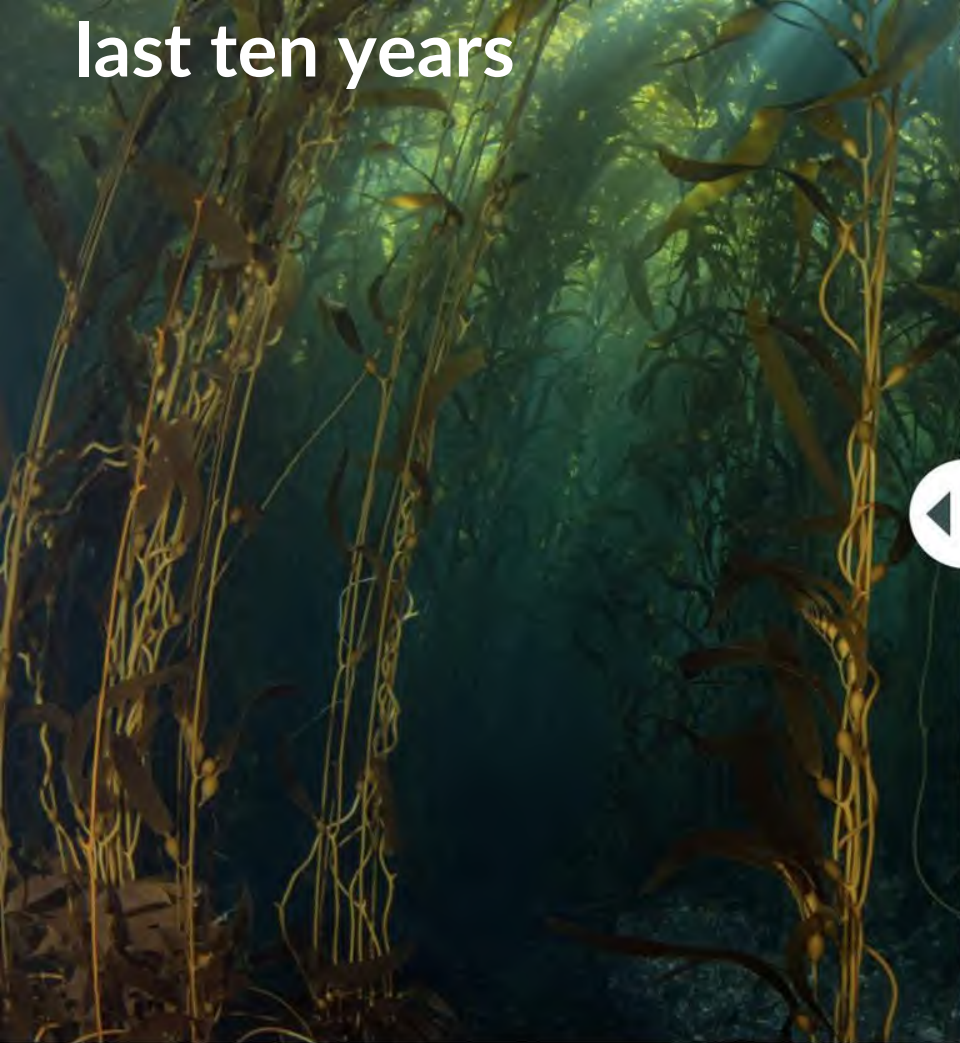
Farmed for food



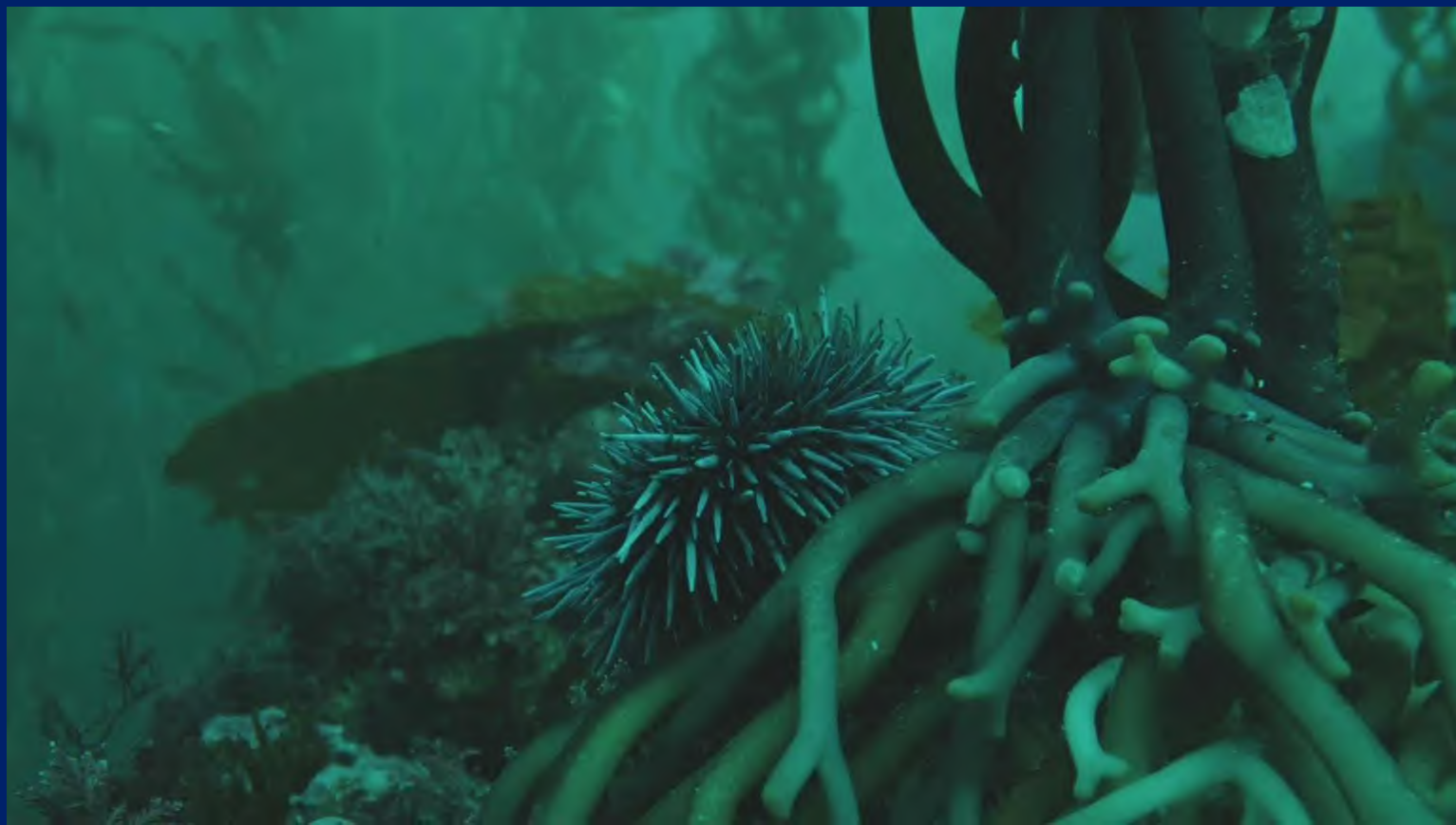
Habitat for biodiversity

Illustration: Ricardo Macía Lalinde / China Dialogue Ocean

85% of kelp forest habitat lost in last ten years

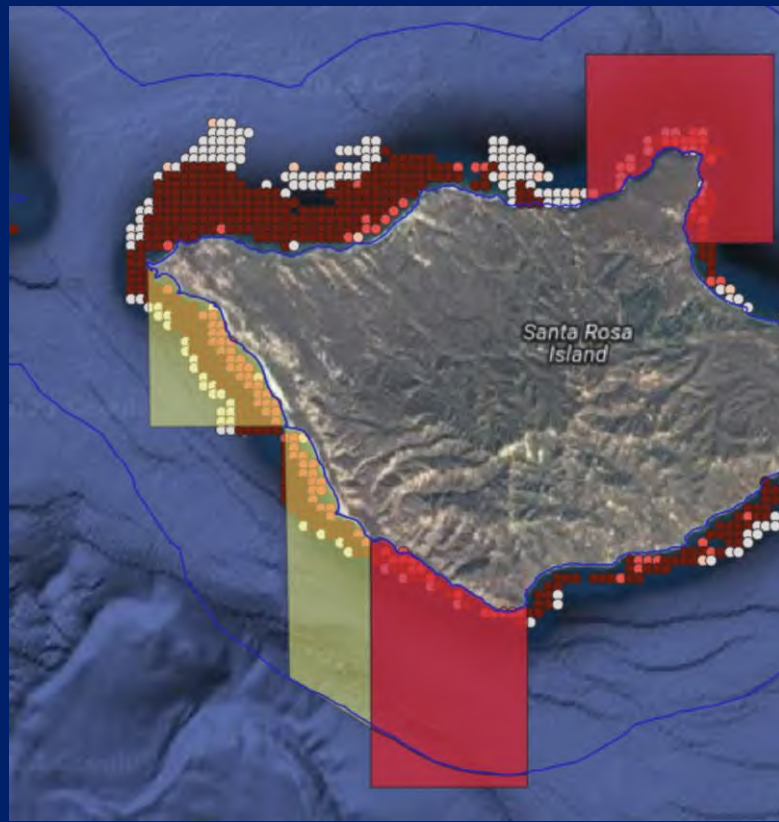
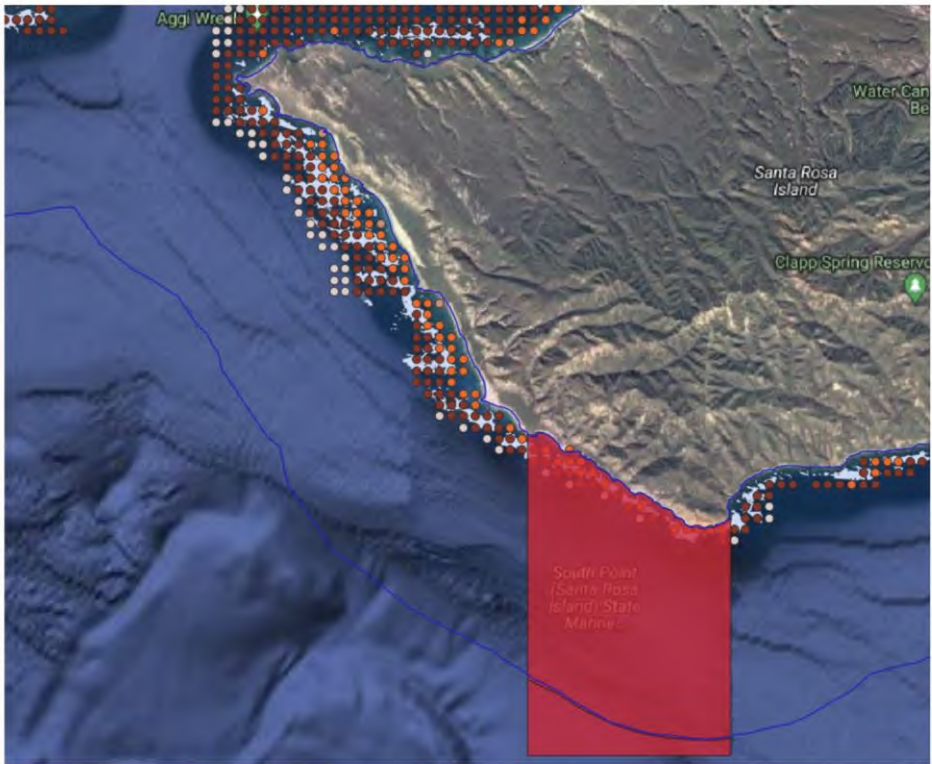


Left Photo: Douglas Klug; Right Photo: Steve Lonhart/NOAA



Success story - The Channel Islands Kelp Forests in MPAs

South Point SMR



*South Point- vibrant stable kelp forest to the west of the reserve.
Expand by 26.3 Sq Mi. from 13 Sq mi.*



Expand by 1.8 Sq Mile to encompass the healthy stable persistent kelp forest west of the reserve.



PPIC

PUBLIC POLICY
INSTITUTE OF CALIFORNIA



STATEWIDE SURVEY · JULY 2024

PPIC Statewide Survey: Californians and the Environment

55. Do you favor or oppose expanding California Marine Protected Areas—or MPAs—to protect fish, wildlife, and their habitat off the California coast?

81% favor

18% oppose

1% don't know

Over 80% of Californians support expanding marine protected areas. Support is even higher in coastal California.

Growing Support:
40+ non profit organizations
30K+ Californians
Small businesses
50+ marine scientists from
institutions include:



Stanford | DOERR SCHOOL OF SUSTAINABILITY
Hopkins Marine Station

