



# Staff Overview of MPA Petitions

May 6, 2026  
Goleta, California

May 5-6, 2026

Business Meeting of the  
**California Fish and Game Commission**

**Susan Ashcraft**

Marine Advisor  
California Fish and Game Commission

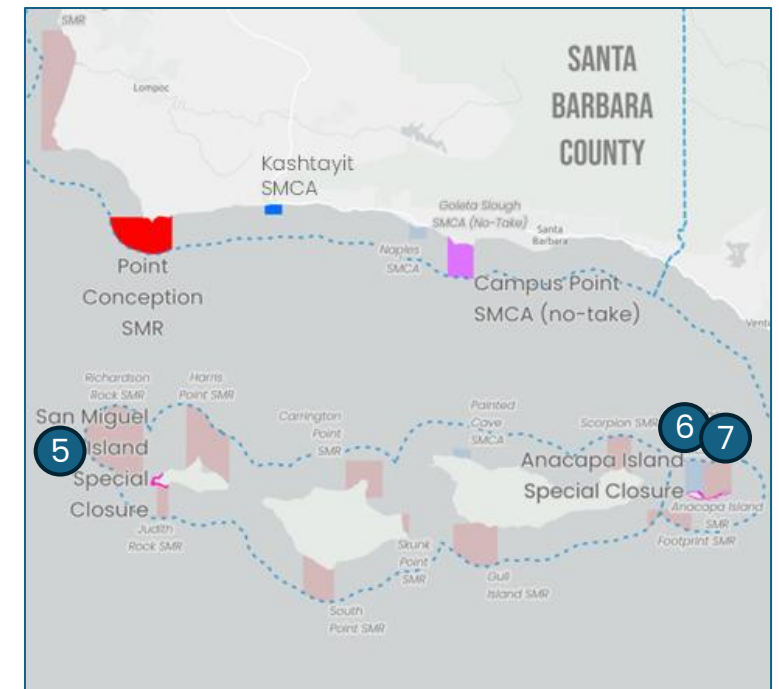
# Tribally-led Petitions

- Submitted by a California Native American tribe, representative designated by a tribe or tribal organization, or has a tribal co-sponsor
- CDFW update provided at the April 14<sup>th</sup> CFGC Tribal Committee meeting, go to <https://fgc.ca.gov/Meetings/2026> for more information
- These five petitions (19, 20, 21, 28, and 29) are not included in the Department evaluation

# 2023-18MPA: Modify Allowed Uses at San Miguel and Anacapa Island Special Closures

## Summary of Proposed Actions in this Region:

5. Eliminate pinniped special closure at San Miguel Island
6. Reduce the size of the brown pelican Anacapa Island Special Closure regulations to allow boat access to Frenchy's Cove
7. Reassess and consider removing the following special closure at Anacapa Island: "No net or trap may be used in waters less than 20 feet deep off the Anacapa Islands"



**CDFW Recommendation:**  
**DENY 2023-18MPA\_5-7**

# 2023-27MPA\_AM: Amend existing Anacapa Island SMCA or Special Closure to Protect Eelgrass While Allowing for Community Access

## Summary of Proposed Action:

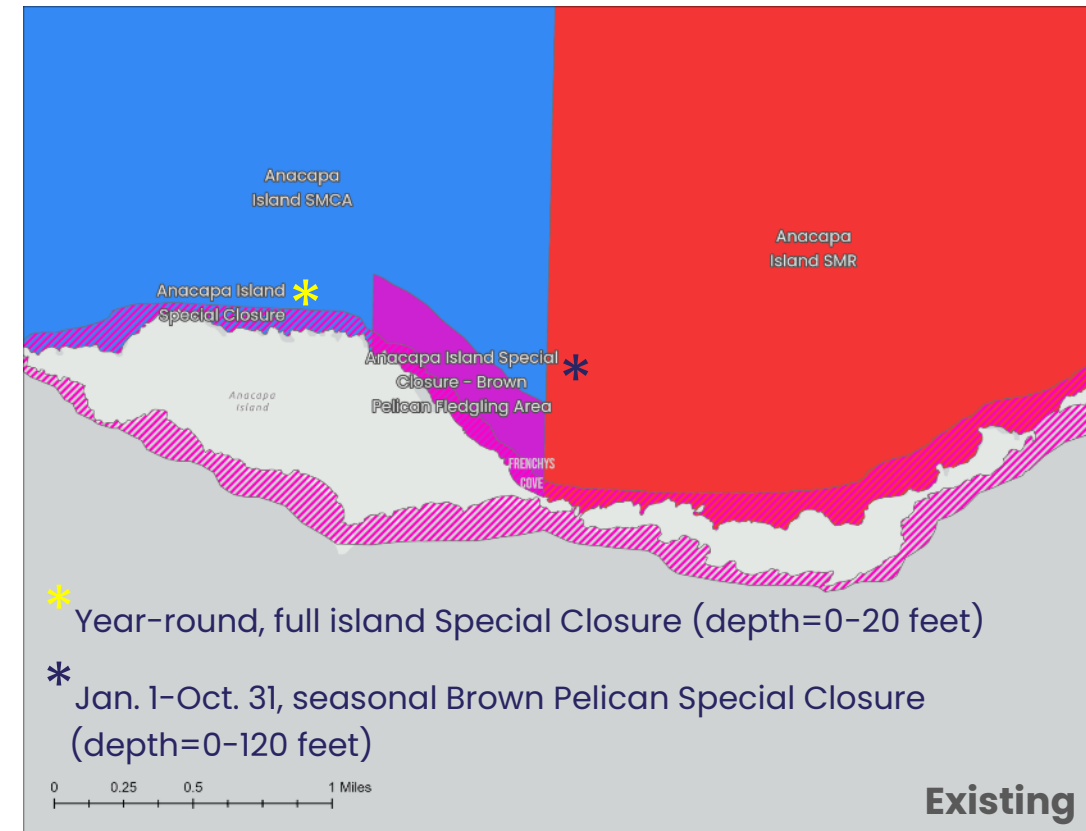
Amend existing Anacapa Island SMCA or Special Closure, evaluating three options (solutions) and choose the one that best protects the eelgrass meadow while allowing for community access



# 2023-27MPA\_AM1\_1: Select best of three options to amend existing Anacapa Island SMCA or Special Closure to protect the eelgrass meadows and allow community access

## 3 Petitioner Proposed Options:

- i. Change Anacapa Island SMCA regulations to disallow commercial California spiny lobster (*Panulirus interruptus*) fishing year-round
- ii. Change Anacapa Island SMCA regulations to disallow hard bottomed fishing gear (including anchoring if applicable) near eelgrass meadows
- iii. Change the border of the Anacapa Island Special Closure, prohibiting the deployment of lobster traps in waters from 0-30 meters (0-98.43 feet) deep instead of the existing 0-6.1 meters (0-20 feet) deep off Anacapa Island



**CDFW Recommendation:  
DENY all options 2023-  
27MPA\_AM1\_1**

# 2023-14MPA: Modify Take in 2 SMCAs to Allow Commercial Take of Sea Urchin

## 2 of 9 Proposed Actions in this Region, Affecting:

Naples SMCA

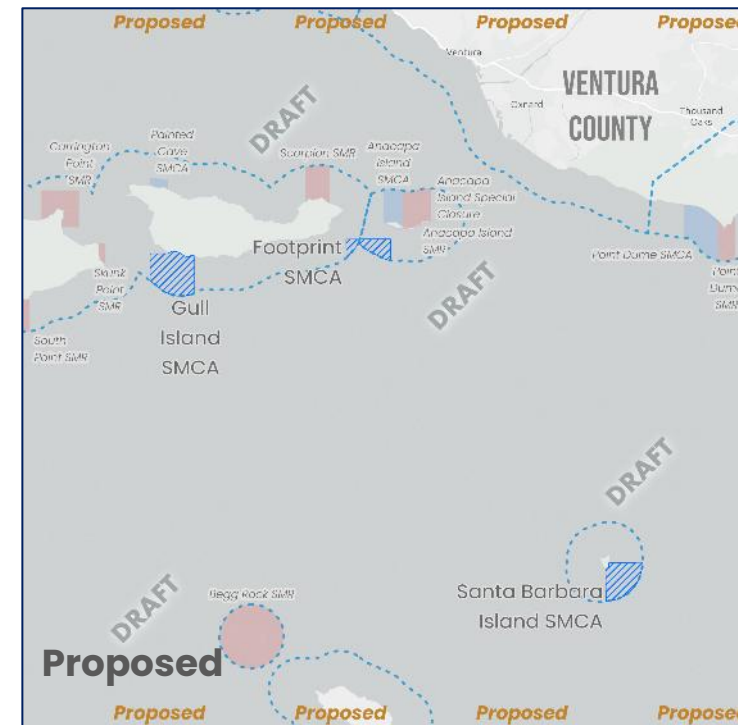
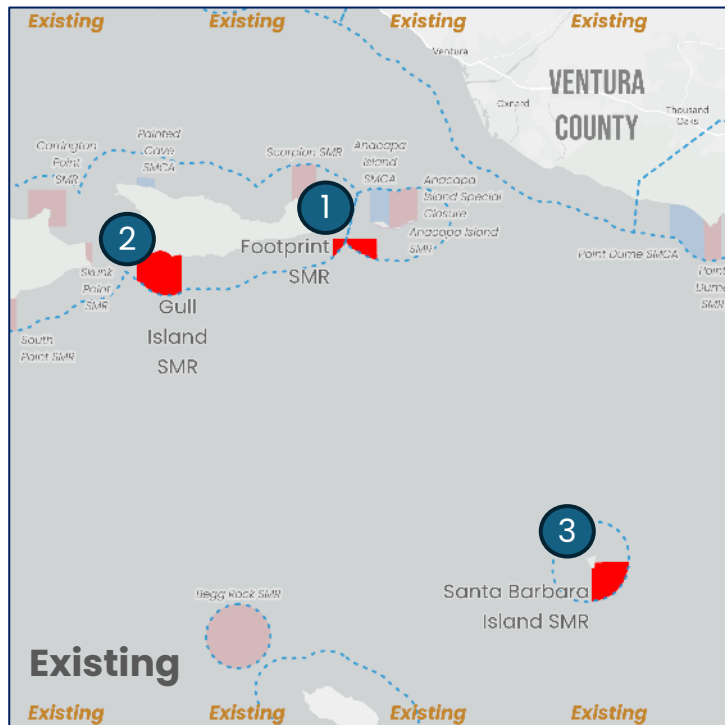
Anacapa Island SMCA



**CDFW Recommendation:  
DENY**

# 2023-15MPA\_AM: Reclassify Footprint, Gull Island, and Santa Barbara Island SMRs to SMCAs to Allow Take of Highly Migratory Species

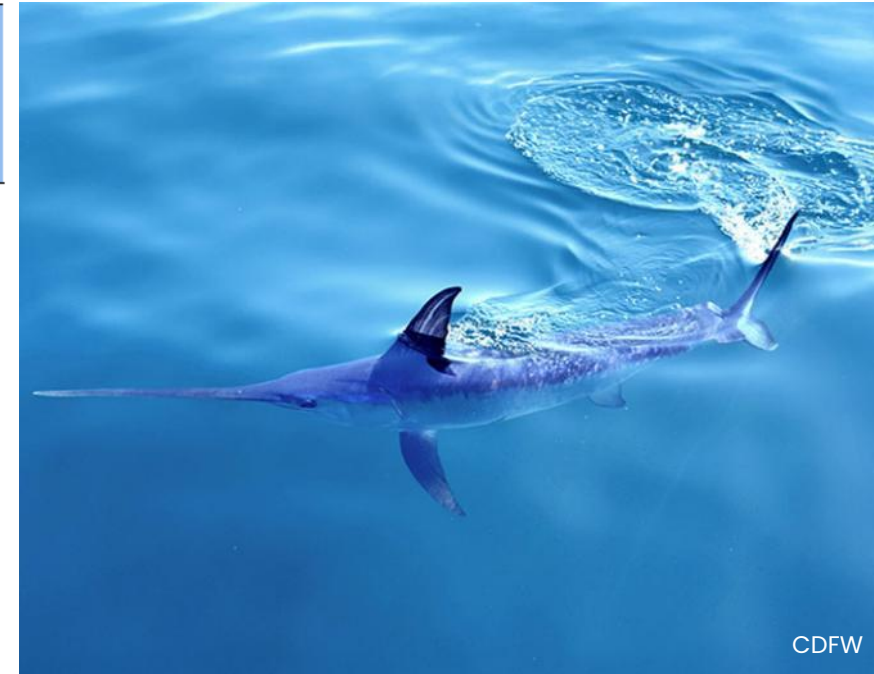
**3 Proposed Actions:** Reclassify 1. Footprint, 2. Gull Island, and 3. Santa Barbara Island SMRs to SMCAs to Allow Take of Highly Migratory Species



# 2023-15MPA\_1-3\_AM2: Reclassify Footprint, Gull Island, and Santa Barbara Island SMRs to SMCAs to Allow Take of Highly Migratory Species

## 6 Proposed Options in the Petition:

Options	Recreational Take: Pelagic Finfish	Recreational Take: HMS	Commercial Take: Pelagic Finfish	Commercial Take: HMS	CPS
1	Hook and line, spear	N/A	Hook and line	N/A	N/A
2	N/A	Hook and line, spear	N/A	Hook and line	Possession
3	Hook and line, spear *no bottom contact	N/A	Hook and line *no bottom contact	N/A	N/A
4	N/A	Hook and line, spear *no bottom contact	N/A	Hook and line *no bottom contact	Possession
5	Spear	N/A	N/A	N/A	N/A
6	N/A	Spear	N/A	N/A	N/A



**CDFW Recommendation:**  
**DENY 2023-15MPA\_1, 2,**  
**and 3\_AM2**

# 2023-33MPA\_AM: Expand Boundaries of South Point and Gull Islands SMRs

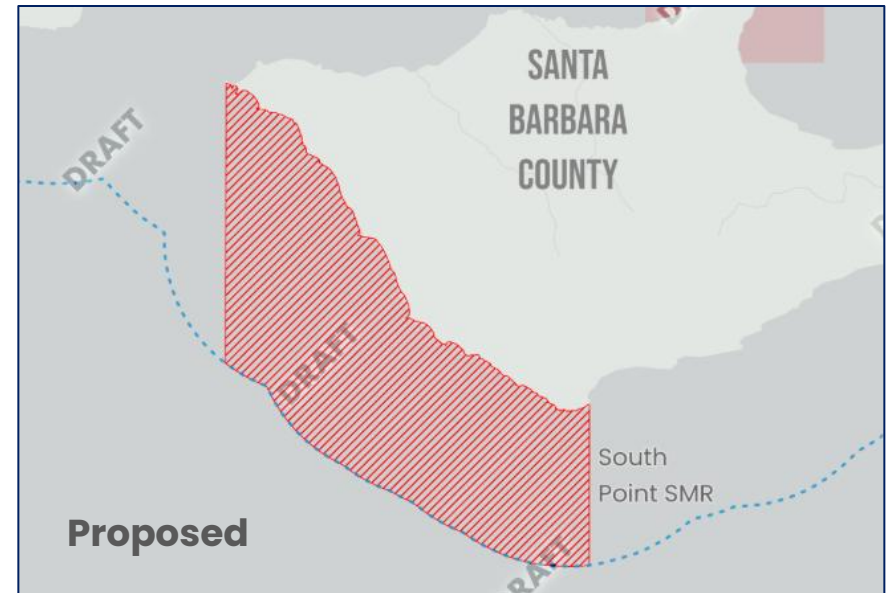
## 2 of 7 Proposed Actions in this Region:

3. Expand South Point SMR by 26.3 sq. miles
4. Expand Gull Island SMR by 1.8 sq. miles



# 2023-33MPA\_3: Expand South Point SMR by 26.3 sq. miles

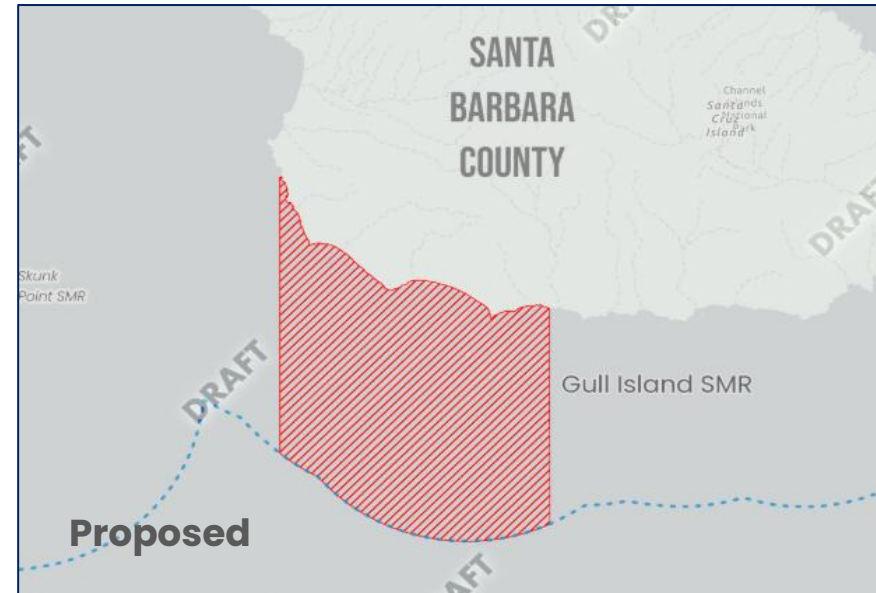
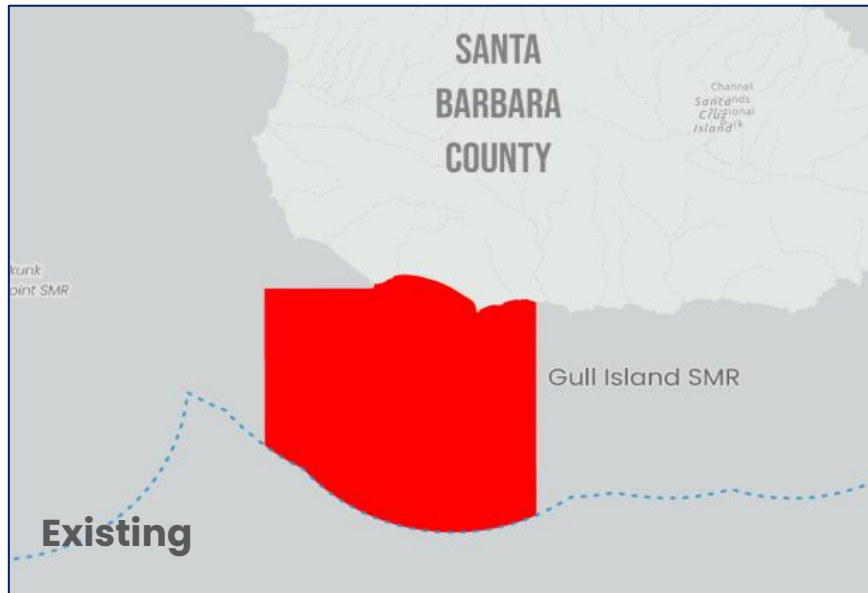
**Summary of Proposed Action:** Expand South Point SMR westward by 26.3 sq mi



**CDFW Recommendation:  
DENY 2023-33MPA\_3**

# 2023-33MPA\_4: Expand Gull Island SMR by 1.8 sq. miles

**Summary of Proposed Action:** Expand Gull Island SMR northward by 1.8 sq mi



**CDFW Recommendation:  
DENY 2023-33MPA\_4**

# Next Steps

- Five tribally led petitions: April 14 Commission Tribal Committee ✓
- Upcoming regional MPA petition meetings:
  - **April 21**, San Mateo Elks Lodge, Del Norte through Monterey counties ✓
  - **May 5-6**, Goleta Hilton Garden Inn, San Luis Obispo through Santa Barbara counties, northern Channel Islands, and Santa Barbara Island ✓
  - **May 19**, San Clemente Holiday Inn Express, Los Angeles through San Diego counties and Santa Catalina Island
- For more information about regional meetings, visit [fgc.ca.gov/meetings/2026](https://fgc.ca.gov/meetings/2026)