

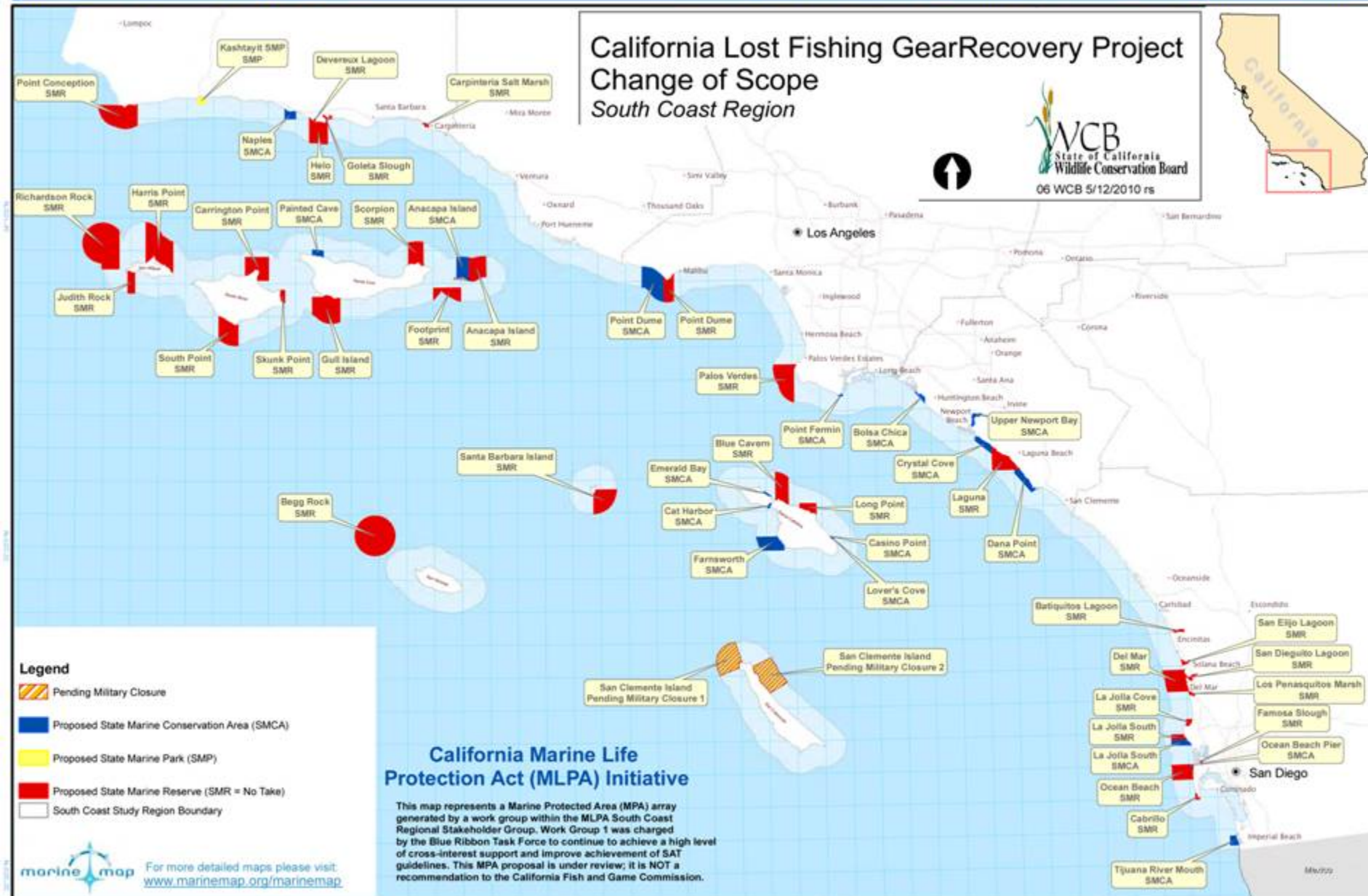
May 27, 2010 WCB Board Meeting
10:00 a.m., State Capitol, Room 112
Sacramento, California 95814







California Lost Fishing Gear Recovery Project Change of Scope South Coast Region



Projection Information:

Name: NAD 1983 California Teale Albers
Projection: Albers
Datum: North American 1983



0 4.5 9 18 Miles
1:1,400,000

Gridlines 5min Interval

Printing Date: 09/21/2009

Created By:

Marine Map, Cartographic Division UCSB

6 California Lost Fishing Gear Recovery Project, (Change of Scope) Various Counties



Lost lobster traps recovered from the ocean floor.

6 California Lost Fishing Gear Recovery Project, (Change of Scope) Various Counties



Lost lobster traps stored on dock after recovery, for possible return to lobster fisherman.

6 California Lost Fishing Gear Recovery Project, (Change of Scope) Various Counties

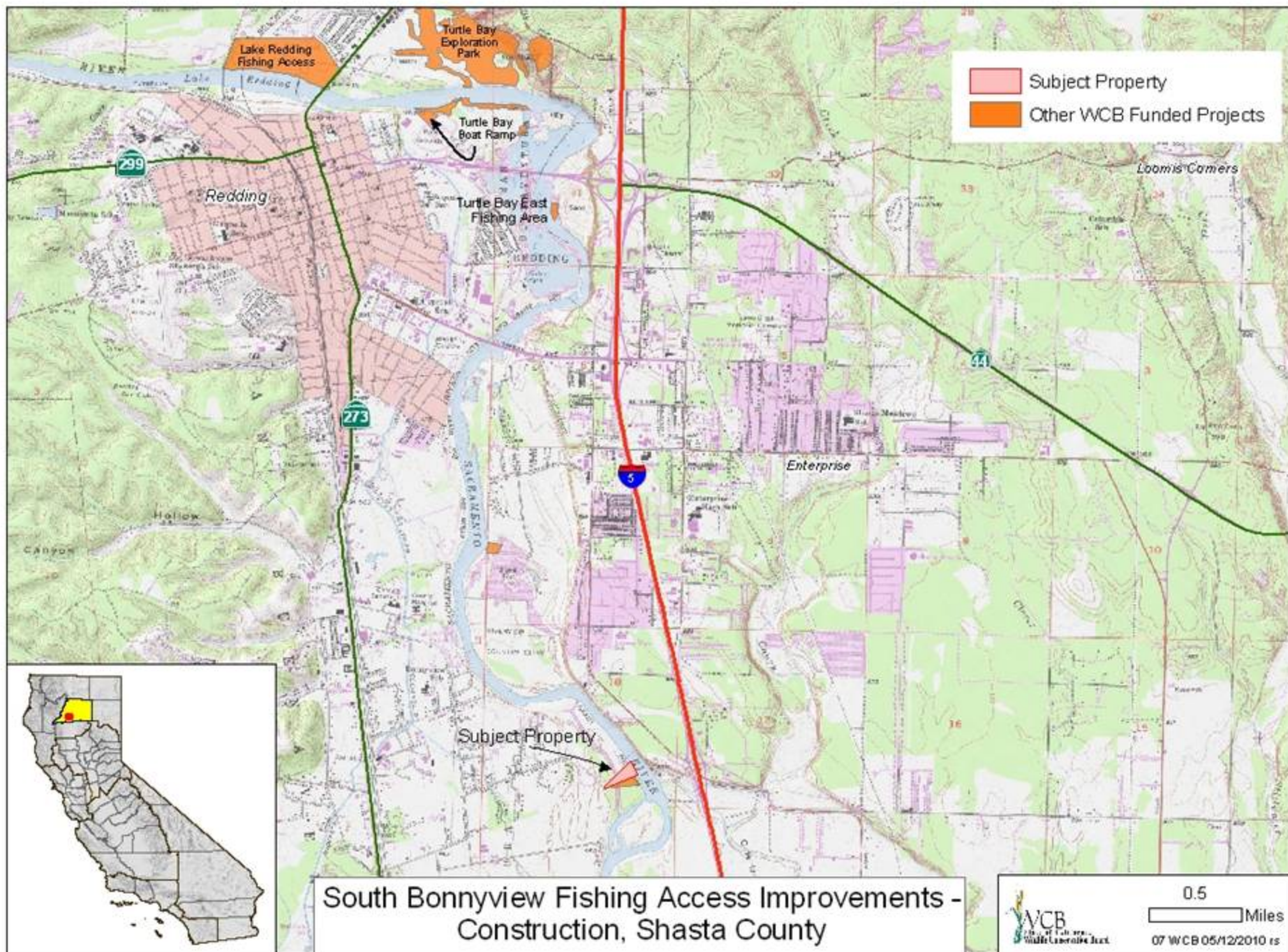


Lost fishing net recovered from the ocean floor.

6 California Lost Fishing Gear Recovery Project, (Change of Scope) Various Counties



Diver securing lost fishing net for recovery.



7 South Bonnyview Fishing Access Improvements (Construction) Shasta County



Restroom to be refurbished and drinking fountain replaced with barrier free version.

7 South Bonnyview Fishing Access Improvements (Construction) Shasta County



Parking area will be resurfaced and restriped.

7 South Bonnyview Fishing Access Improvements (Construction) Shasta County



Location of the proposed ADA fishing platform, with the South Bonnyview Road crossing of the Sacramento River in the background.

8 Feather River Wildlife Area (Transfer of Property) Highway 99 Bridge Expansion Sutter County



Standing on northeast side of property
looking south at parcel.

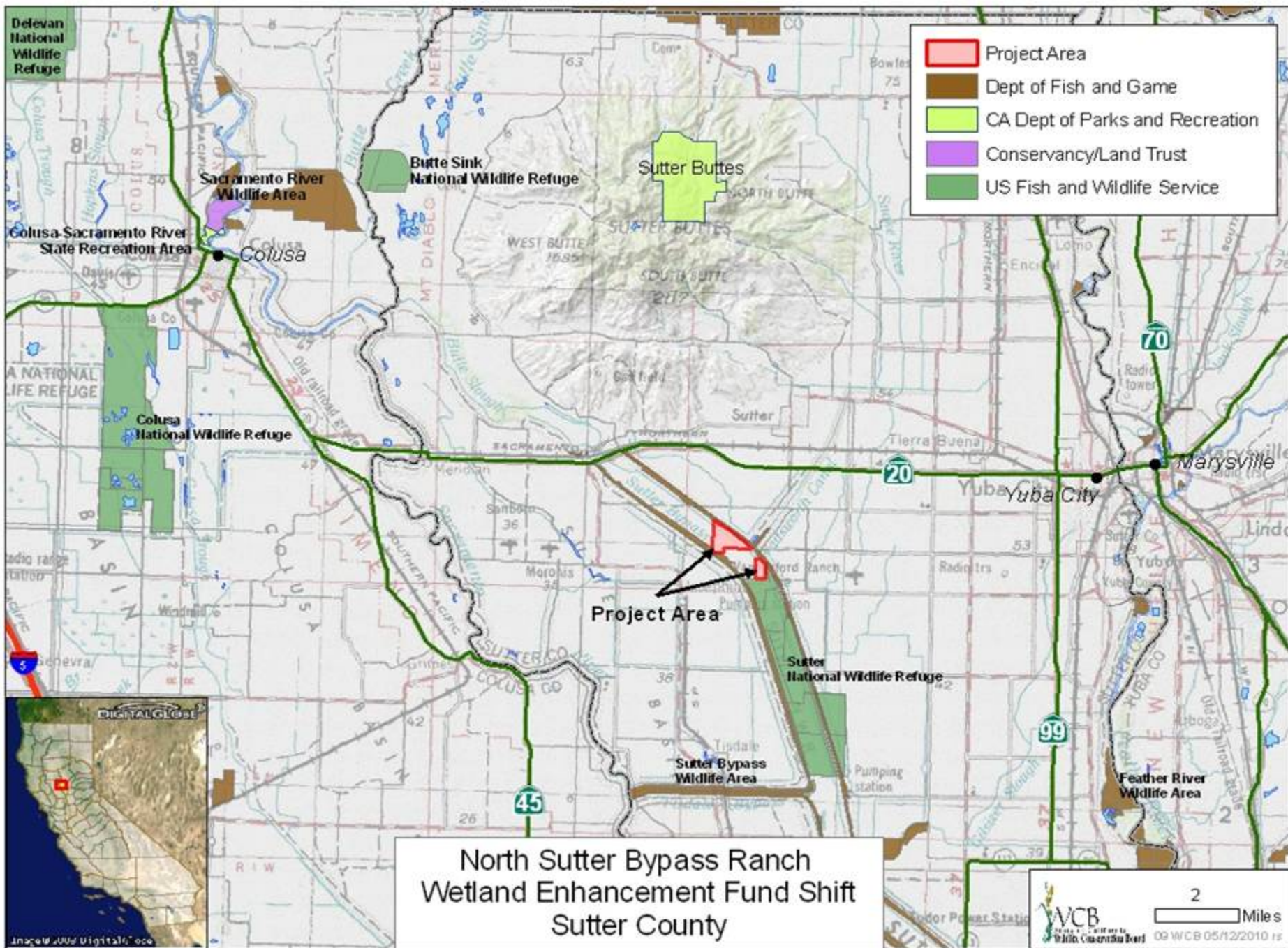
Fee in blue

TCE is clear

8 Feather River Wildlife Area (Transfer of Property) Highway 99 Bridge Expansion Sutter County



Standing nw side of bridge looking south.



9 North Sutter Bypass Ranch Wetland Enhancement (Fund Shift) Sutter County

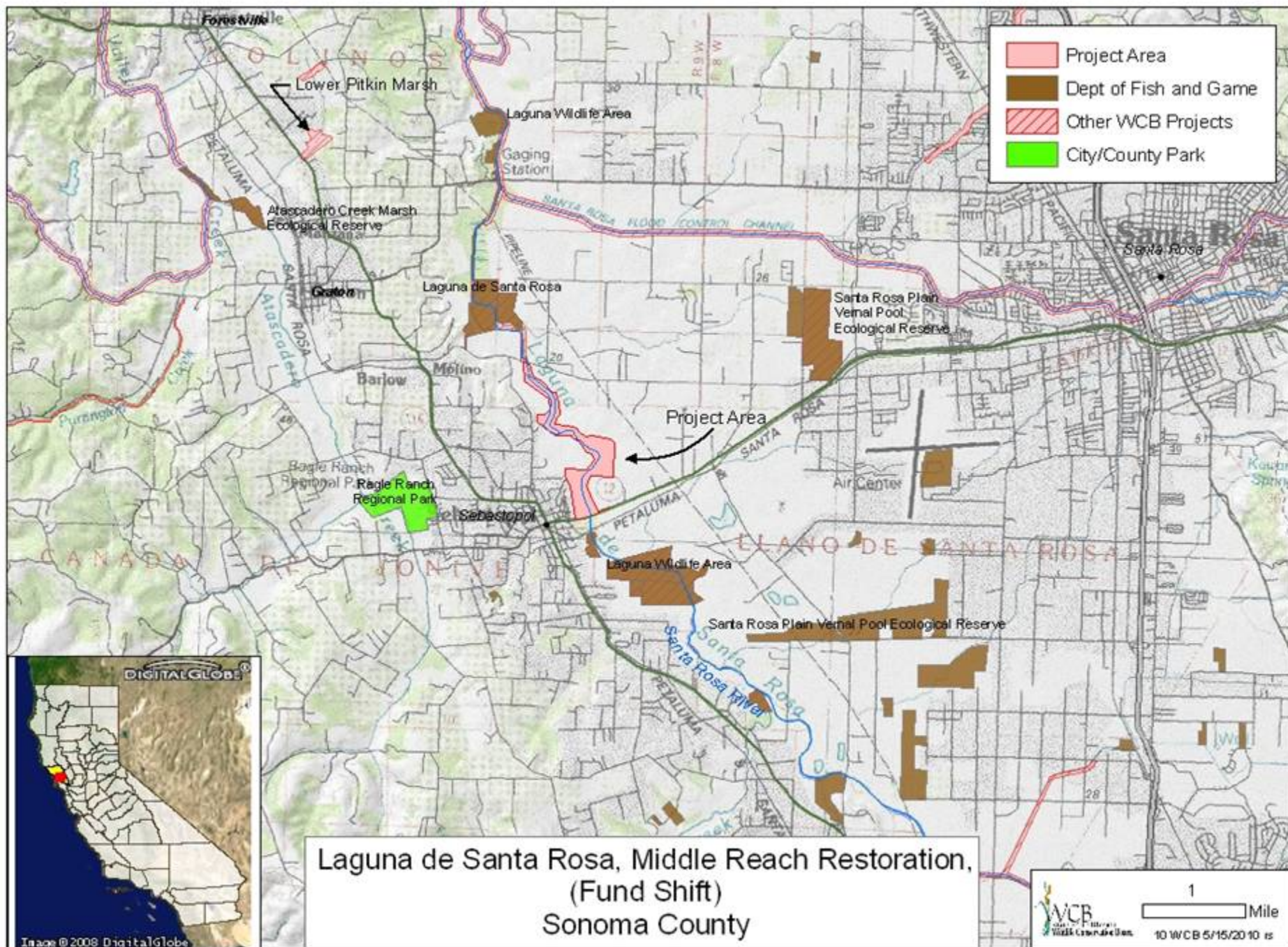


Seasonal wetlands on site cannot be easily managed and do not produce much desirable vegetation.

9 North Sutter Bypass Ranch Wetland Enhancement (Fund Shift) Sutter County



Wetlands on the southern portion of the site cannot be drained.
U.S. Fish and Wildlife Service's Sutter National Wildlife Refuge in background.



10 Laguna de Santa Rosa Middle Reach, Restoration (Fund Shift) Sonoma County

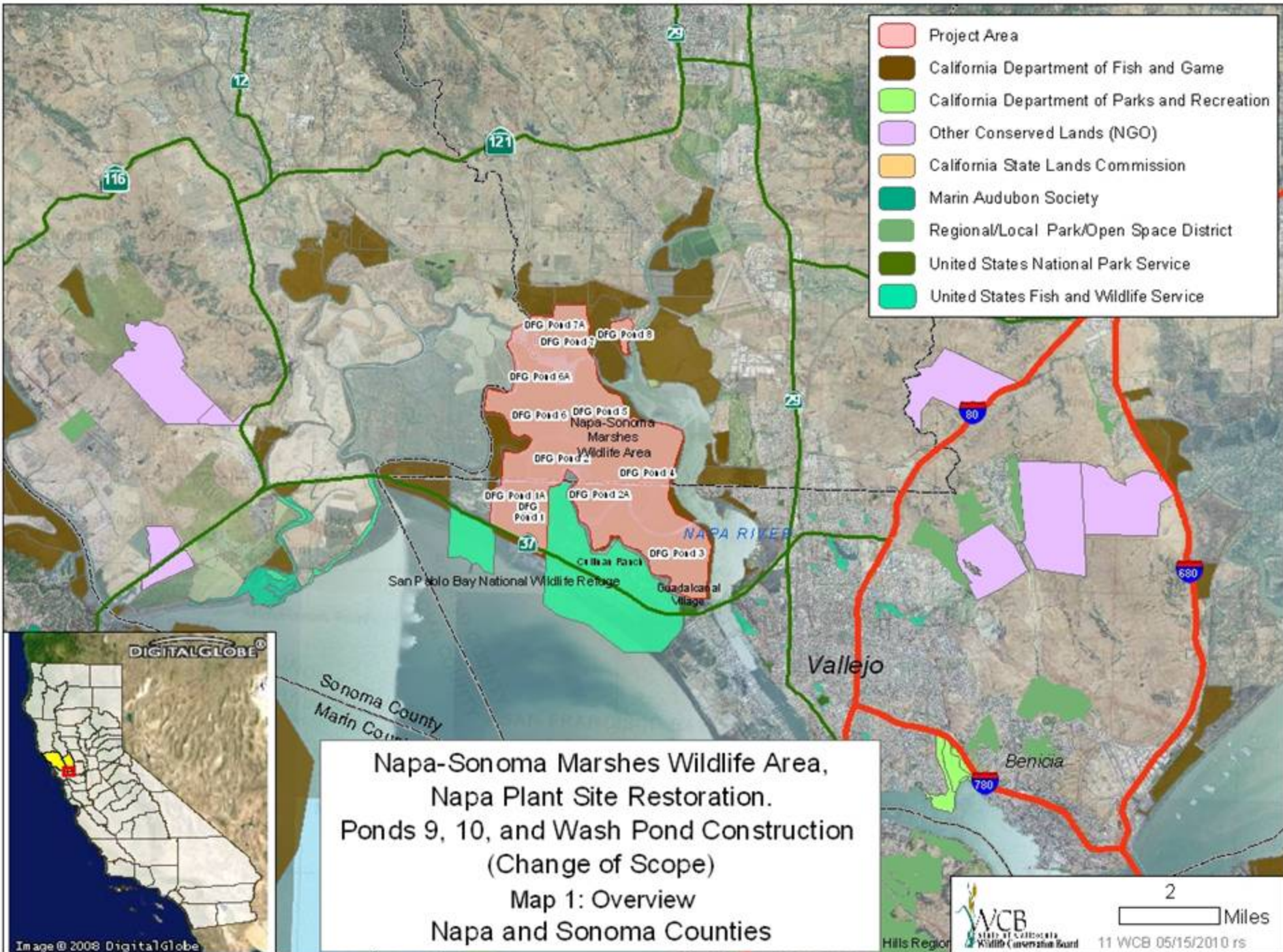


Laguna de Santa Rosa Riparian Restoration,
Fund Shift, Sonoma County
Project location photo, looking downstream.

10 Laguna de Santa Rosa Middle Reach, Restoration (Fund Shift) Sonoma County



Laguna de Santa Rosa Riparian Restoration, Fund Shift, Sonoma County.
CCC crew planting riparian vegetation, Spring 2008.



11 Napa-Sonoma Marshes Wildlife Area, Napa Plant Restoration, Ponds 9, 10, and Wash Pond Construction (Change of Scope) Napa and Sonoma Counties

Small Shorebirds



Medium Shorebirds



Diving Ducks



Fish Eaters

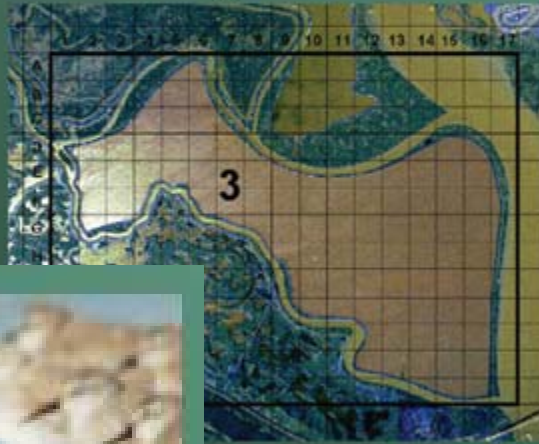


Dabbling Ducks



11 Napa-Sonoma Marshes Wildlife Area, Napa Plant Restoration, Ponds 9, 10, and Wash Pond Construction (Change of Scope) Napa and Sonoma Counties

- Birds counted monthly during high tide
- Birds identified to species and placed with 250-m grid cells



Salt Pond Studies

11 Napa-Sonoma Marshes Wildlife Area, Napa Plant Restoration, Ponds 9, 10, and Wash Pond Construction (Change of Scope) Napa and Sonoma Counties



12 Los Banos Wildlife Area Lift Pumps Merced County



The proposed pump station #1 will be located on this canal.

12 Los Banos Wildlife Area Lift Pumps Merced County



Proposed pumps will resemble this existing pump station on the Wildlife Area.

12 Los Banos Wildlife Area Lift Pumps Merced County



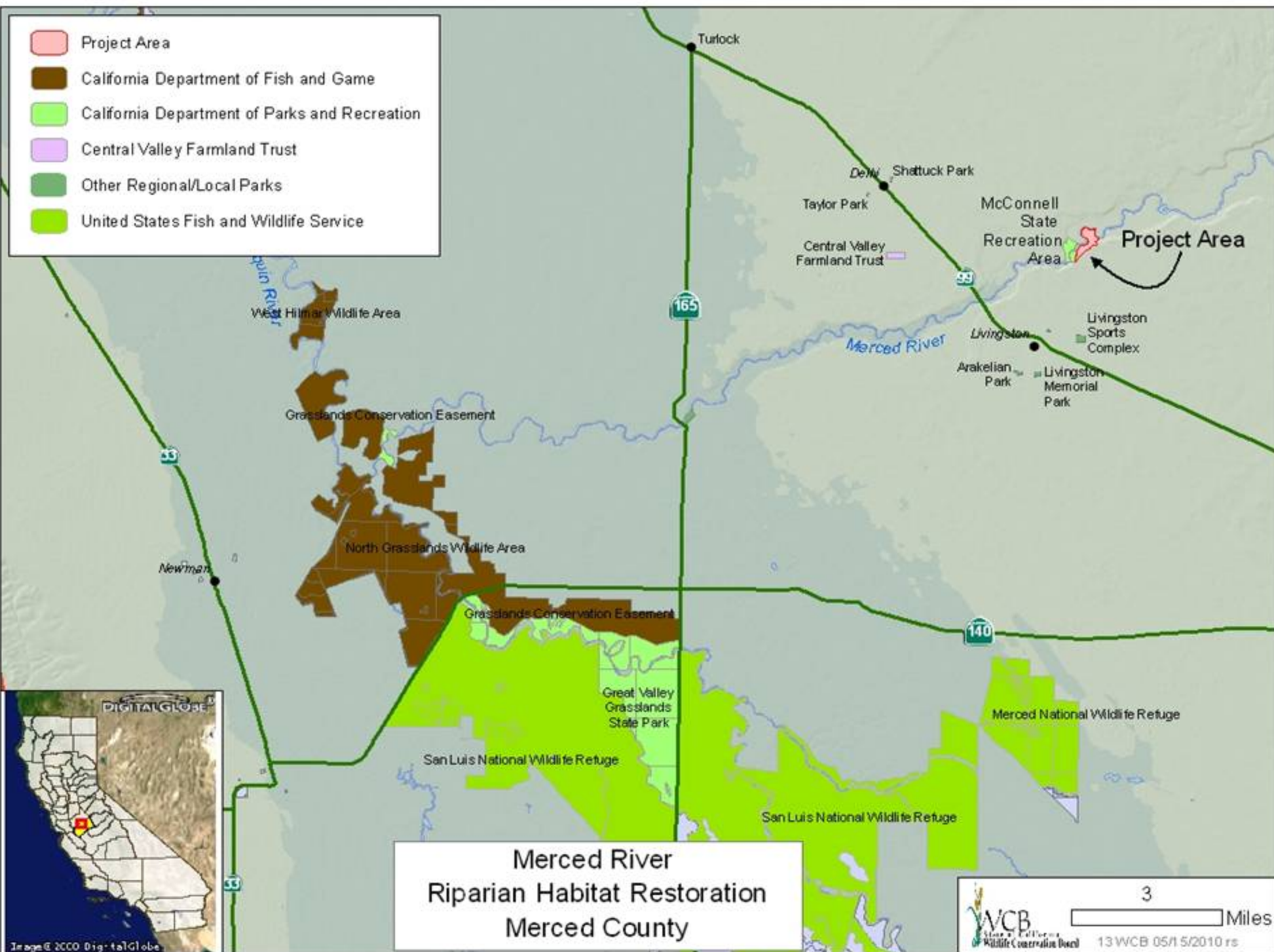
The proposed pump station #3 will provide reliable water to this seasonal wetland, which is open to the public and has this popular ADA hunting blind.

12 Los Banos Wildlife Area Lift Pumps Merced County



Delivered water is critical to the continued operation of the Los Banos Wildlife Area, making it possible for the DFG to maintain thousands of acres of wetlands for waterfowl and many other species.

-  Project Area
-  California Department of Fish and Game
-  California Department of Parks and Recreation
-  Central Valley Farmland Trust
-  Other Regional/Local Parks
-  United States Fish and Wildlife Service



13 Merced River Riparian Habitat Restoration Merced County



Project will slope back incised bank and re-vegetate to stabilize soil.

13 Merced River Riparian Habitat Restoration Merced County



Areas of degradation will be planted with native vegetation to connect the riparian corridor.

13 Merced River Riparian Habitat Restoration Merced County

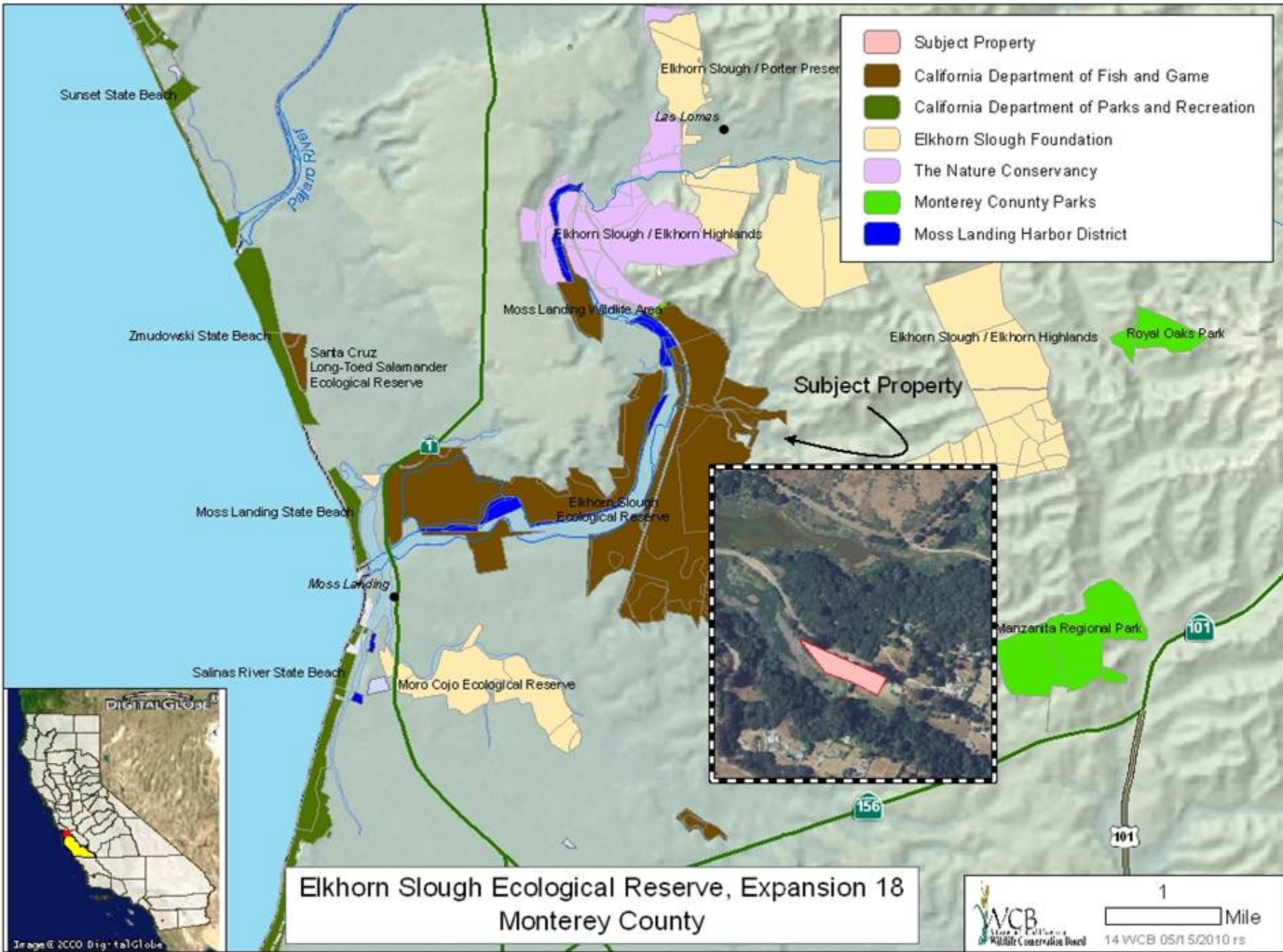


Project will eradicate non native *Arundo* and replant areas with native vegetation.

13 Merced River Riparian Habitat Restoration Merced County



Project will replace degraded and non-efficient low-lift pump.



14 Elkhorn Slough Ecological Reserve, Expansion 18 Monterey County

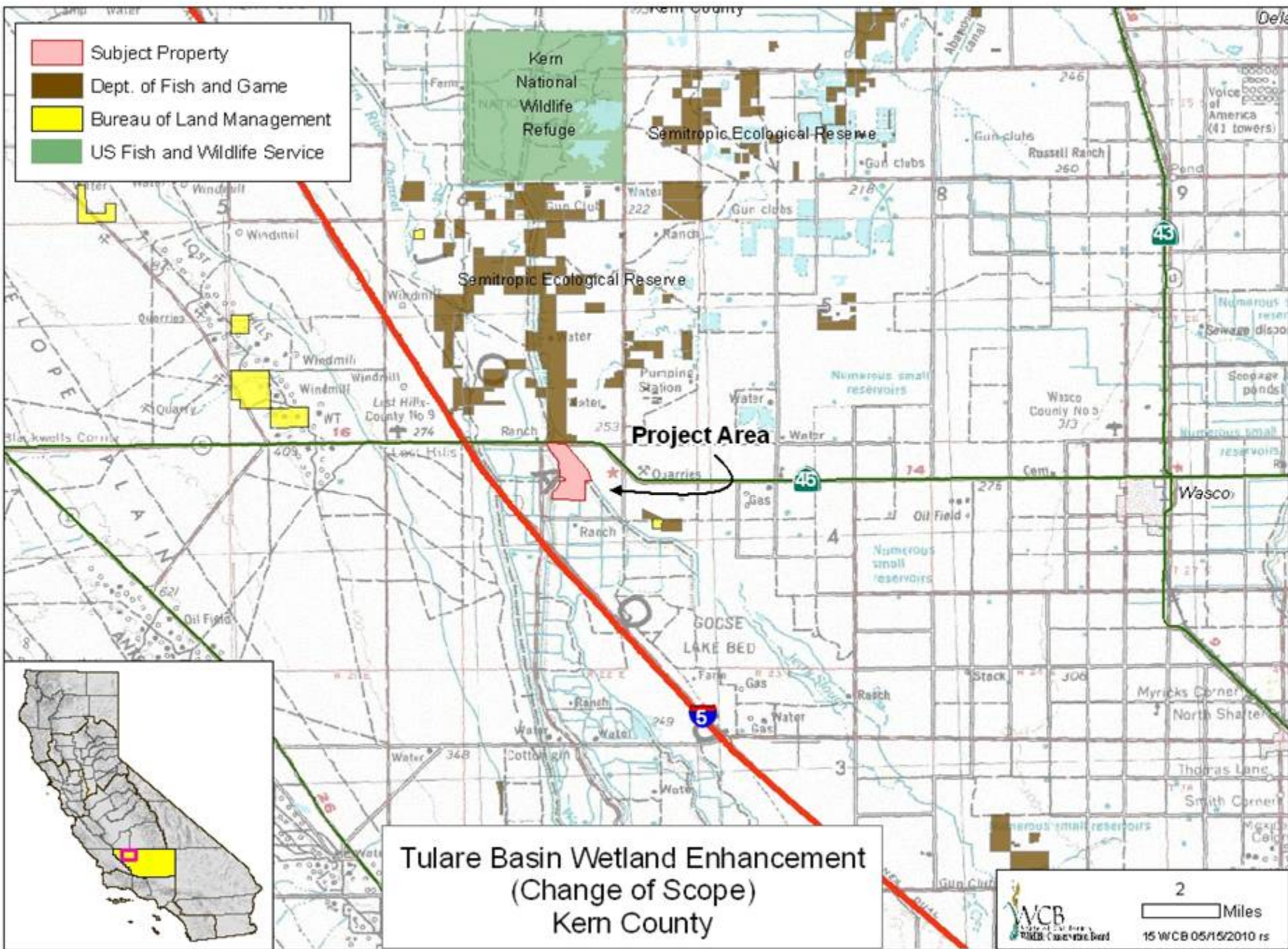


View of typical interior woodlands in the area.

14 Elkhorn Slough Ecological Reserve, Expansion 18 Monterey County



View of typical wooded uplands in the area.



15 Tulare Basin Wetland Enhancement (Change of Scope) Kern County



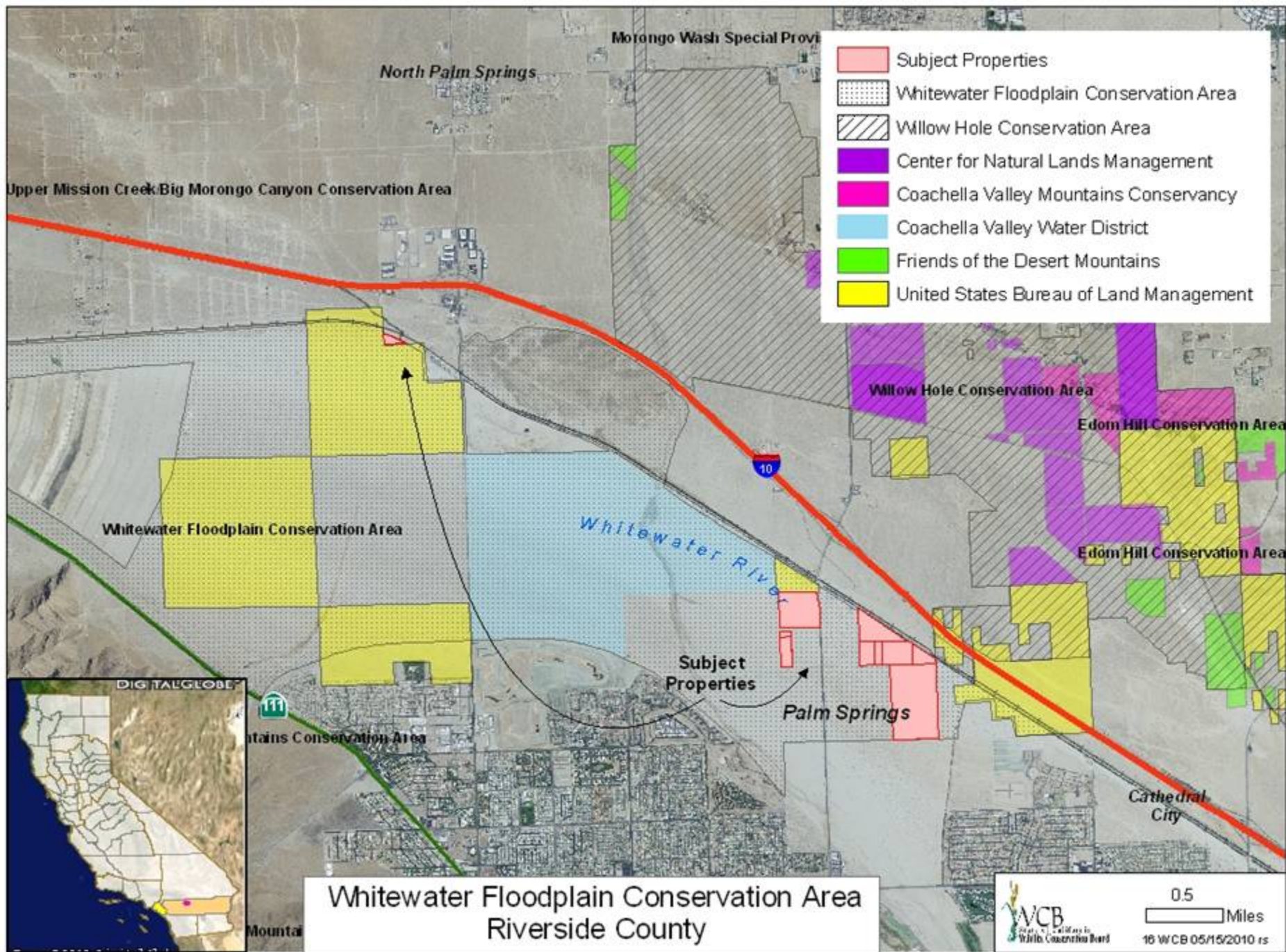
The proposed well will be drilled in foreground.

The existing irreparable well is in front of and to the left of the pickup truck.

15 Tulare Basin Wetland Enhancement (Change of Scope) Kern County



Existing wetlands on site that will be maintained with the new well.



16 Whitewater Floodplain Conservation Area Riverside County



Looking east from the westerly parcel.

16 Whitewater Floodplain Conservation Area Riverside County



Looking at westerly parcel with Highway 10 in the distance.

16 Whitewater Floodplain Conservation Area Riverside County



Looking west from Gene Autry Trail, shows core blow sands habitat.

16 Whitewater Floodplain Conservation Area Riverside County

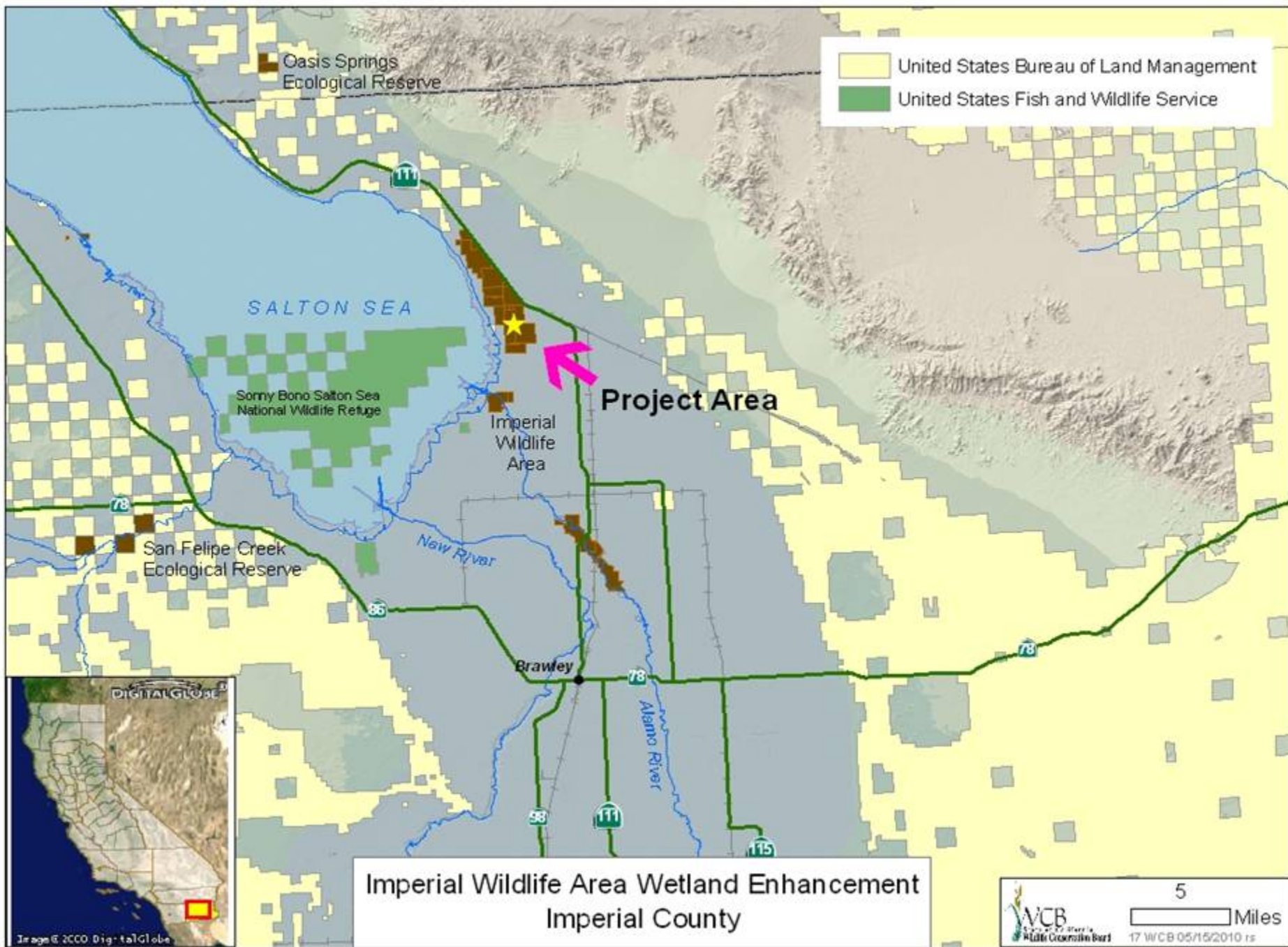


Blow sands habitat with wind turbines in distance.

16 Whitewater Floodplain Conservation Area Riverside County



Looking south from Gene Autry Trail, with San Jacinto mountains in distance.



17 Imperial Wildlife Area Wetland Enhancement Imperial County

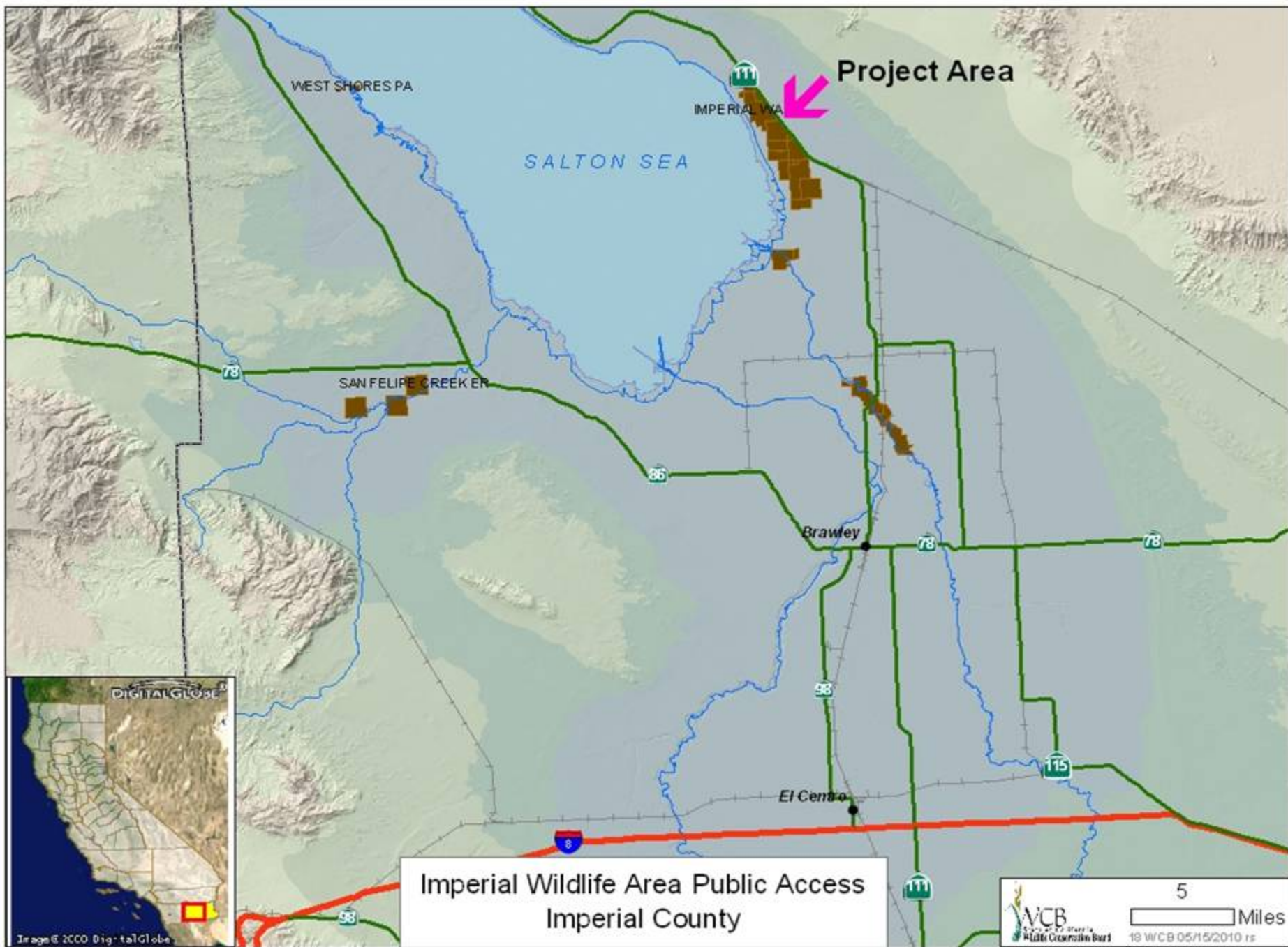


The proposed pipeline will replace an existing water supply ditch. Note thickets of invasive tamarisk on right. Tamarisk will be removed as part of the wetland enhancement.

17 Imperial Wildlife Area Wetland Enhancement Imperial County



Proposed wetland enhancement will resemble these recently enhanced wetlands on site.
Note piles of dead tamarisk in center of wetland.



18 Imperial Wildlife Area Public Access Imperial County



Existing check station and campground needs gravel in certain areas.
Note single vault restroom in distance near center of photo.

18 Imperial Wildlife Area Public Access Imperial County



Existing overflow campground needs to be graveled. New vault toilet would be constructed on the far side of the parking lot.

18 Imperial Wildlife Area Public Access Imperial County

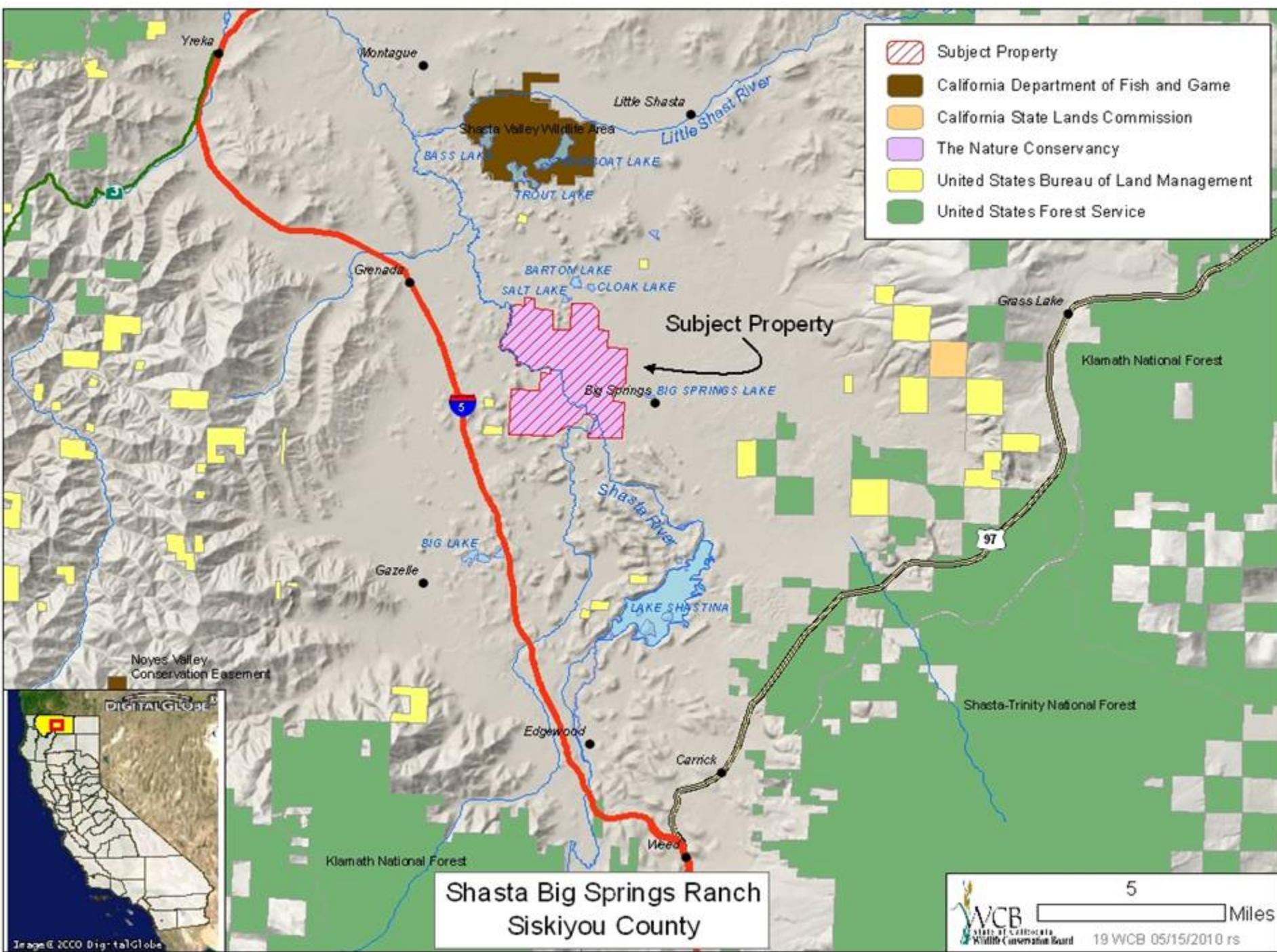


Google Earth photo showing how busy this campground can be during the duck season.

18 Imperial Wildlife Area Public Access Imperial County



Existing small vault toilet is not large enough to serve the entire campground.



Shasta Big Springs Ranch
Siskiyou County

19 Shasta Big Springs Ranch Siskiyou County



Looking southward at the southern portion of the Ranch; Big Springs Creek in the foreground; Mt. Shasta in the distance.

19 Shasta Big Springs Ranch Siskiyou County



Looking northward at the Ranch and the meandering Big Springs Creek.

19 Shasta Big Springs Ranch Siskiyou County



Bass Lake located on the southern portion of the Ranch.

19 Shasta Big Springs Ranch Siskiyou County



Looking southeastward at Big Springs Creek and Mt. Shasta.

- Subject Property
- other_WCB
- California Department of Fish and Game
- The Nature Conservancy
- United States Bureau of Land Management
- United States Forest Service

Subject Property

Klamath National Forest

Noyes Valley
Conservation Easement

Scott River

Gazelle

Edgewood

Carrick

Weed

Klamath National Forest

Klamath National
Forest

Callahan

Shasta-Trinity National Forest

Mount Shasta

Scott Valley
Siskiyou County

4

Miles



20 WCB 05/15/2010 rs



Image © 2000 DigitalGlobe

20 Scott Valley Siskiyou County



Intensive Agriculture

20 Scott Valley Siskiyou County



Grazing Land/Wildlife Habitat

20 Scott Valley Siskiyou County



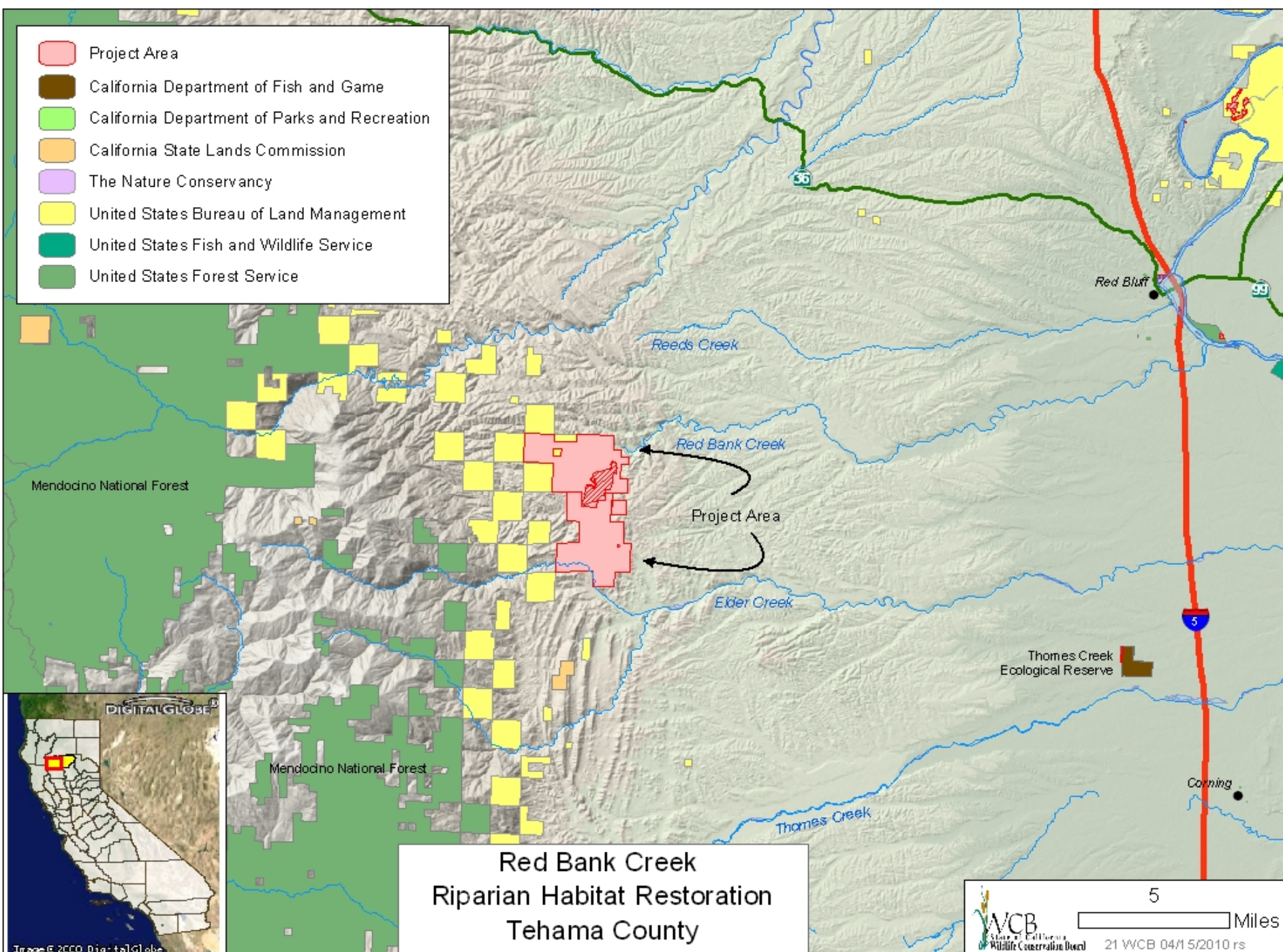
Riparian

20 Scott Valley Siskiyou County



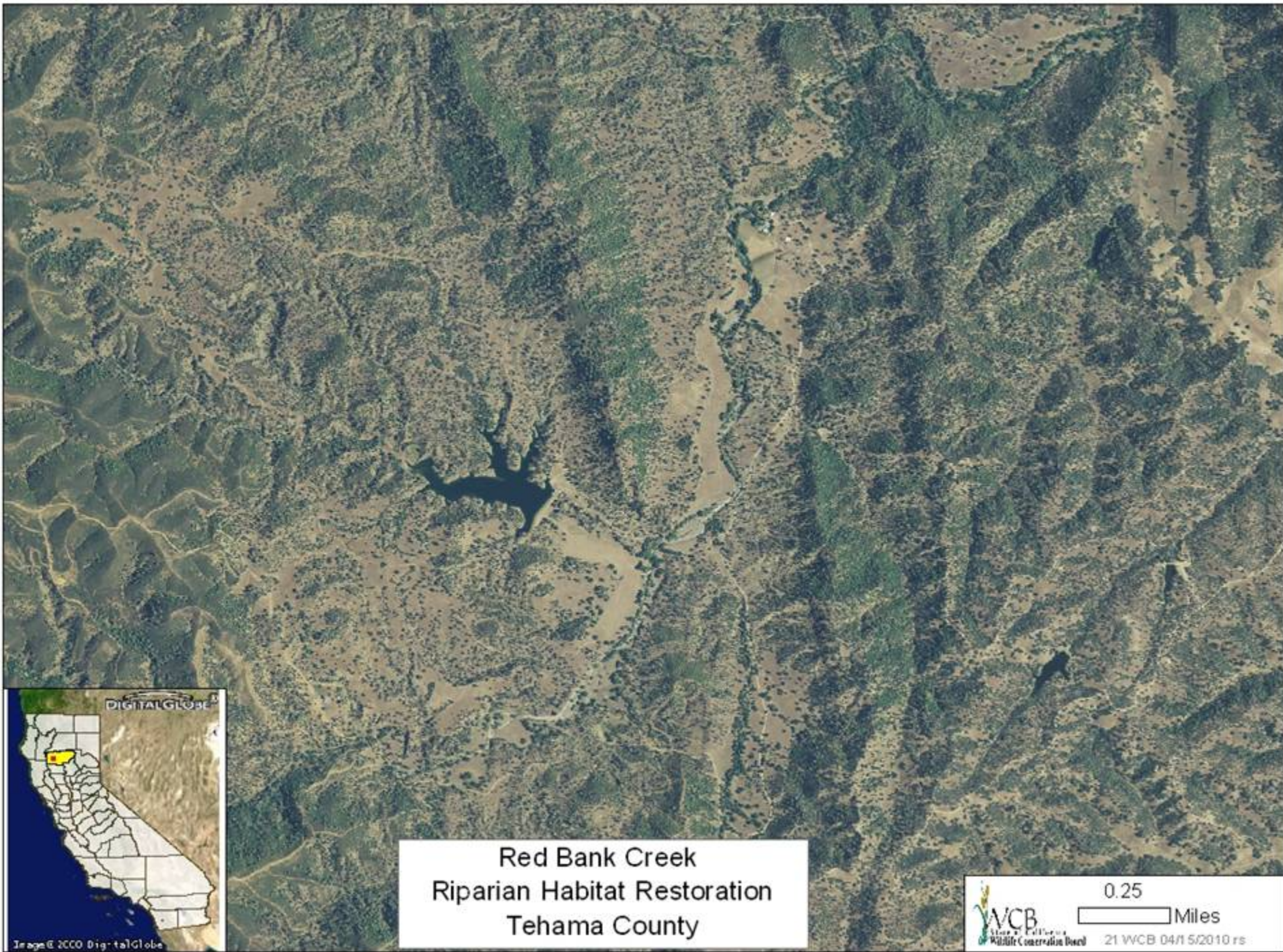
Cattle Grazing

- Project Area
- California Department of Fish and Game
- California Department of Parks and Recreation
- California State Lands Commission
- The Nature Conservancy
- United States Bureau of Land Management
- United States Fish and Wildlife Service
- United States Forest Service



Red Bank Creek Riparian Habitat Restoration Tehama County





Red Bank Creek
Riparian Habitat Restoration
Tehama County

21 Red Bank Creek Riparian Habitat Restoration Tehama County



Livestock access to Red Bank Creek is currently a necessity as a water source but also a problem for maintenance of the riparian corridor. Project fencing and an alternate watering source will prevent damage from livestock.

21 Red Bank Creek Riparian Habitat Restoration Tehama County



Streambank erosion will be slowed by root structure from riparian vegetation to be planted on top of the bank and cattle exclusion.

21 Red Bank Creek Riparian Habitat Restoration Tehama County



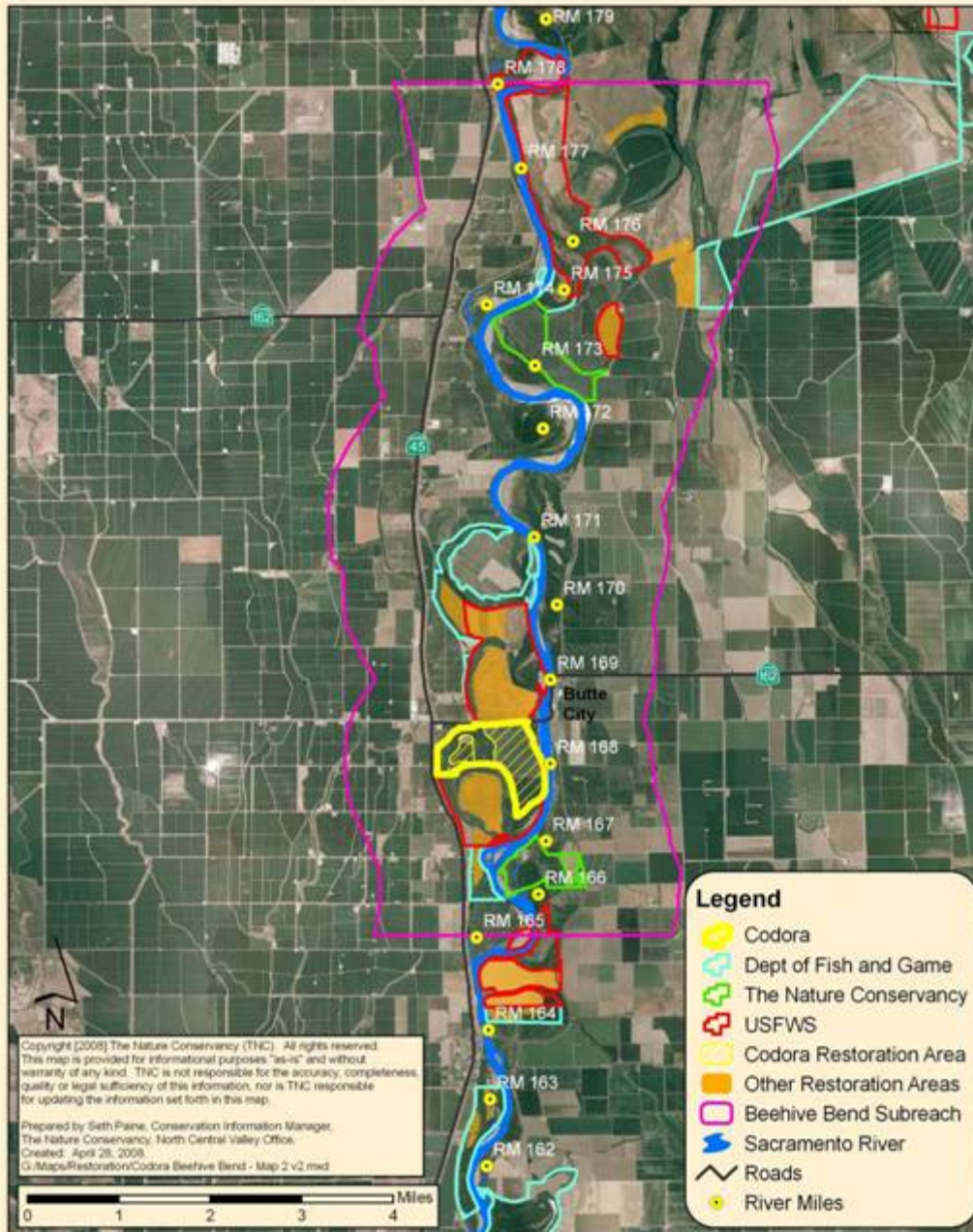
Project will enhance the riparian habitat and widen the riparian corridor with fencing and native plantings to protect the creek and improve wildlife use.

21 Red Bank Creek Riparian Habitat Restoration Tehama County

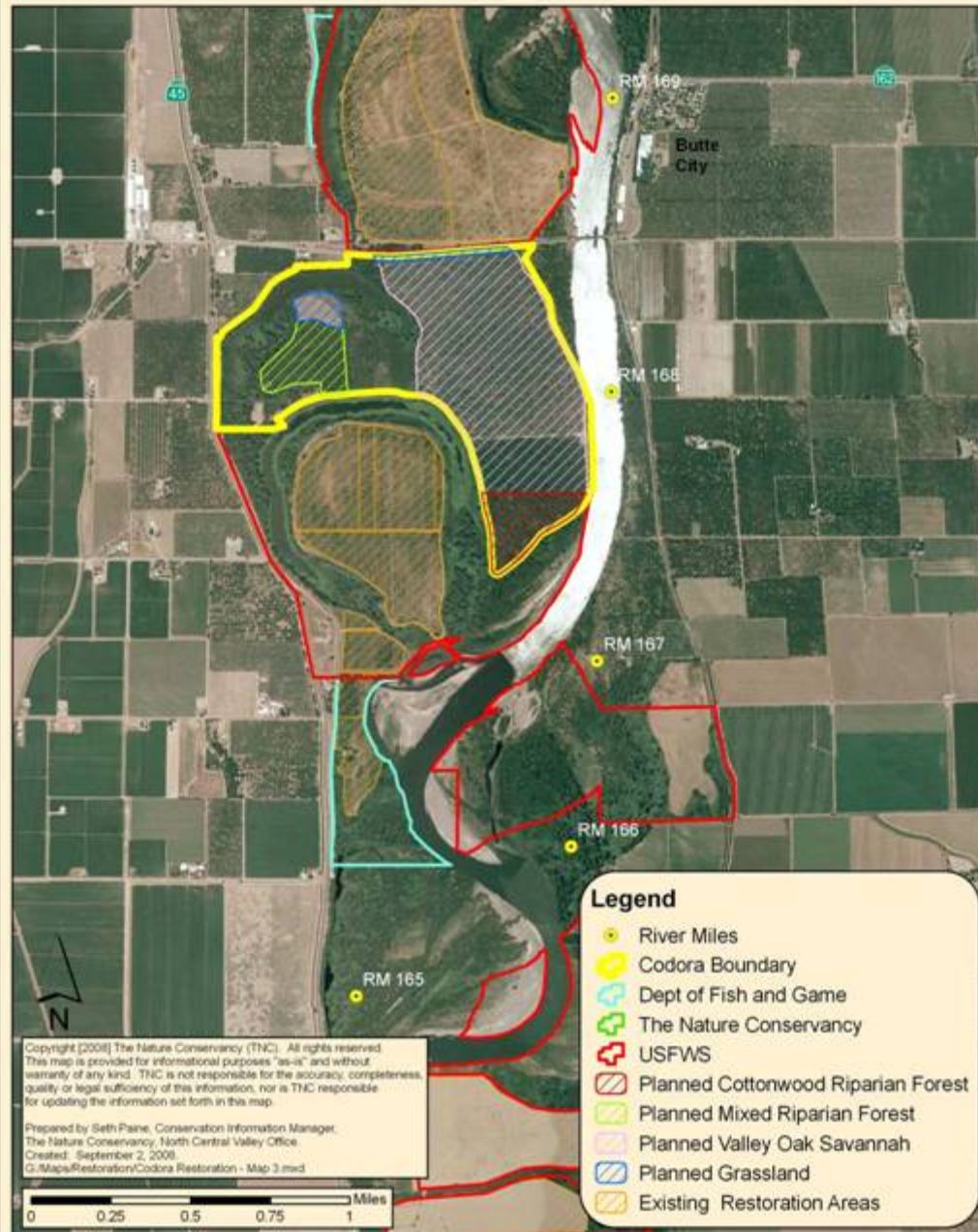


Much of the current riparian habitat is of a single age-class and lacks understory vegetation. Project will diversify the riparian habitat by adding an understory component.

Map 2. Beehive Bend Subreach



Map 3. Codora Restoration



22 Sacramento River National Wildlife Refuge, Codora Unit, Riparian Restoration Glenn County



Codora walnut orchard (right) and riparian habitat (left) interface.

22 Sacramento River National Wildlife Refuge, Codora Unit, Riparian Restoration Glenn County



This walnut orchard will be removed and replaced with riparian habitat.

22 Sacramento River National Wildlife Refuge, Codora Unit, Riparian Restoration Glenn County



This area will be restored to native grassland.

22 Sacramento River National Wildlife Refuge, Codora Unit, Riparian Restoration Glenn County



23 Lemon Canyon Ranch Sierra County



View East on Lemon Canyon Road

23 Lemon Canyon Ranch Sierra County



Lemon Canyon Creek

23 Lemon Canyon Ranch Sierra County



Rangeland

23 Lemon Canyon Ranch Sierra County



Barns and Rangeland

23 Lemon Canyon Ranch Sierra County

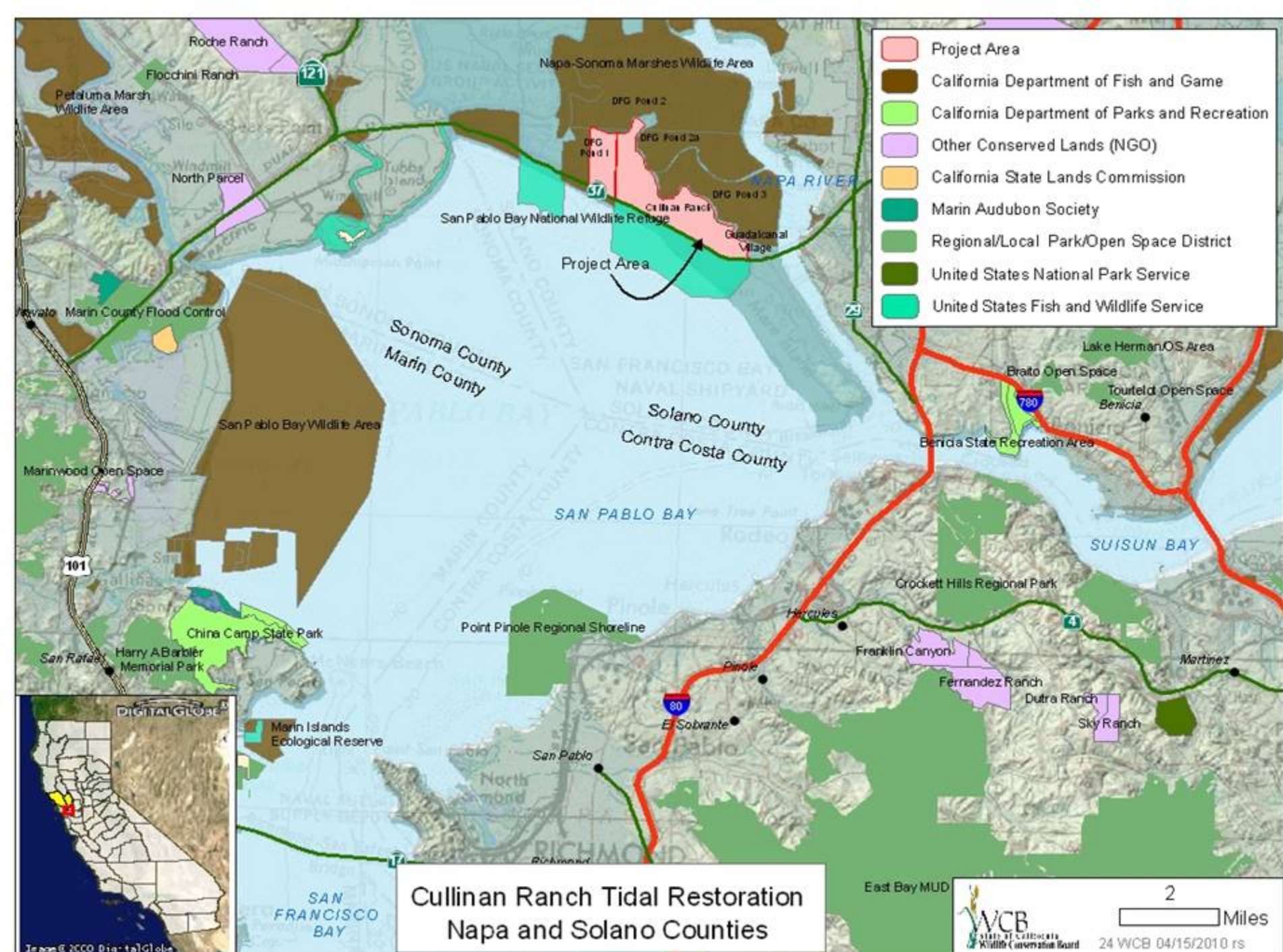


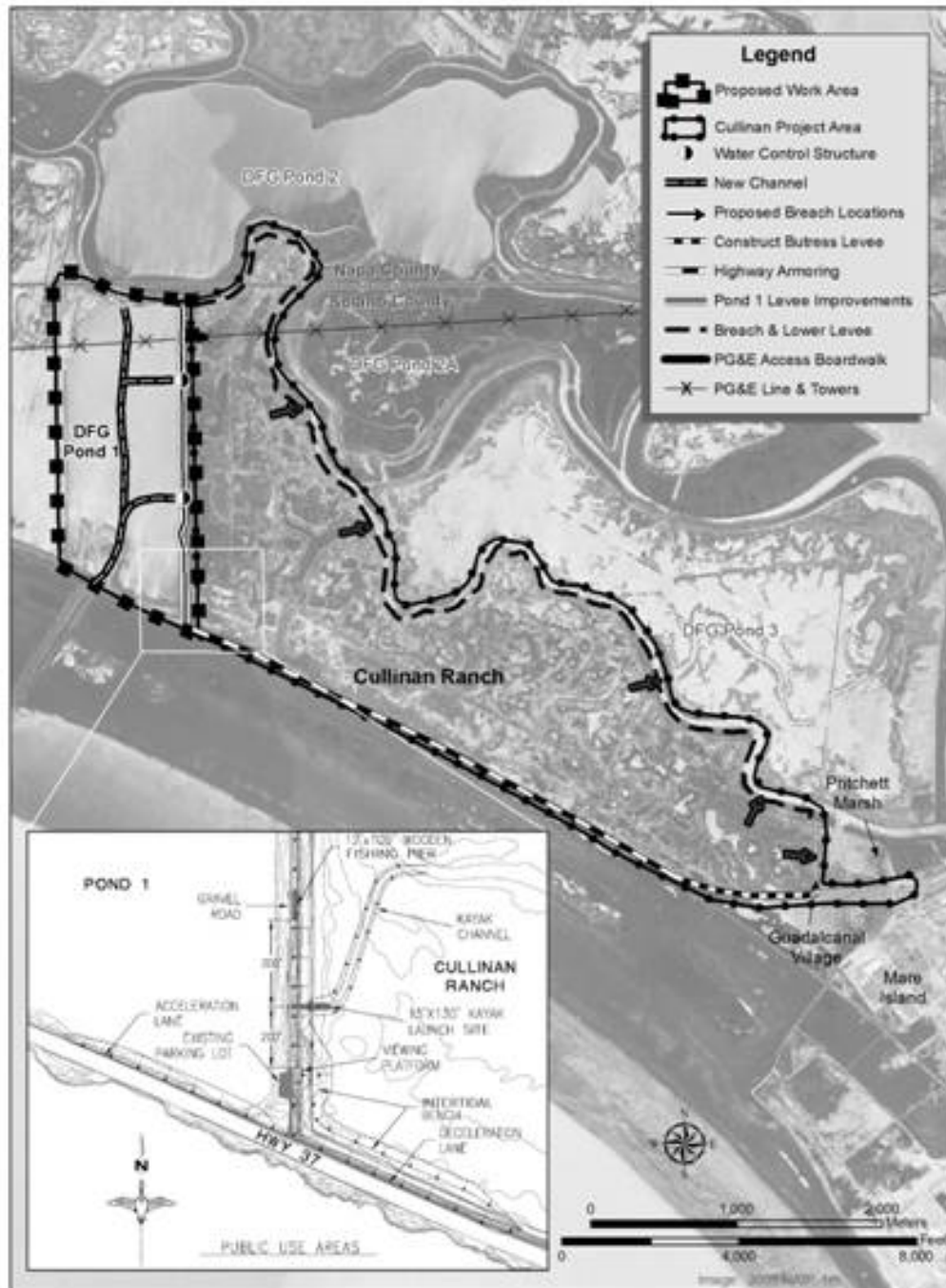
Rangeland

23 Lemon Canyon Ranch Sierra County



Looking West over the property into the greater Sierra Valley.





24 Cullinan Ranch Tidal Restoration Napa and Solano Counties



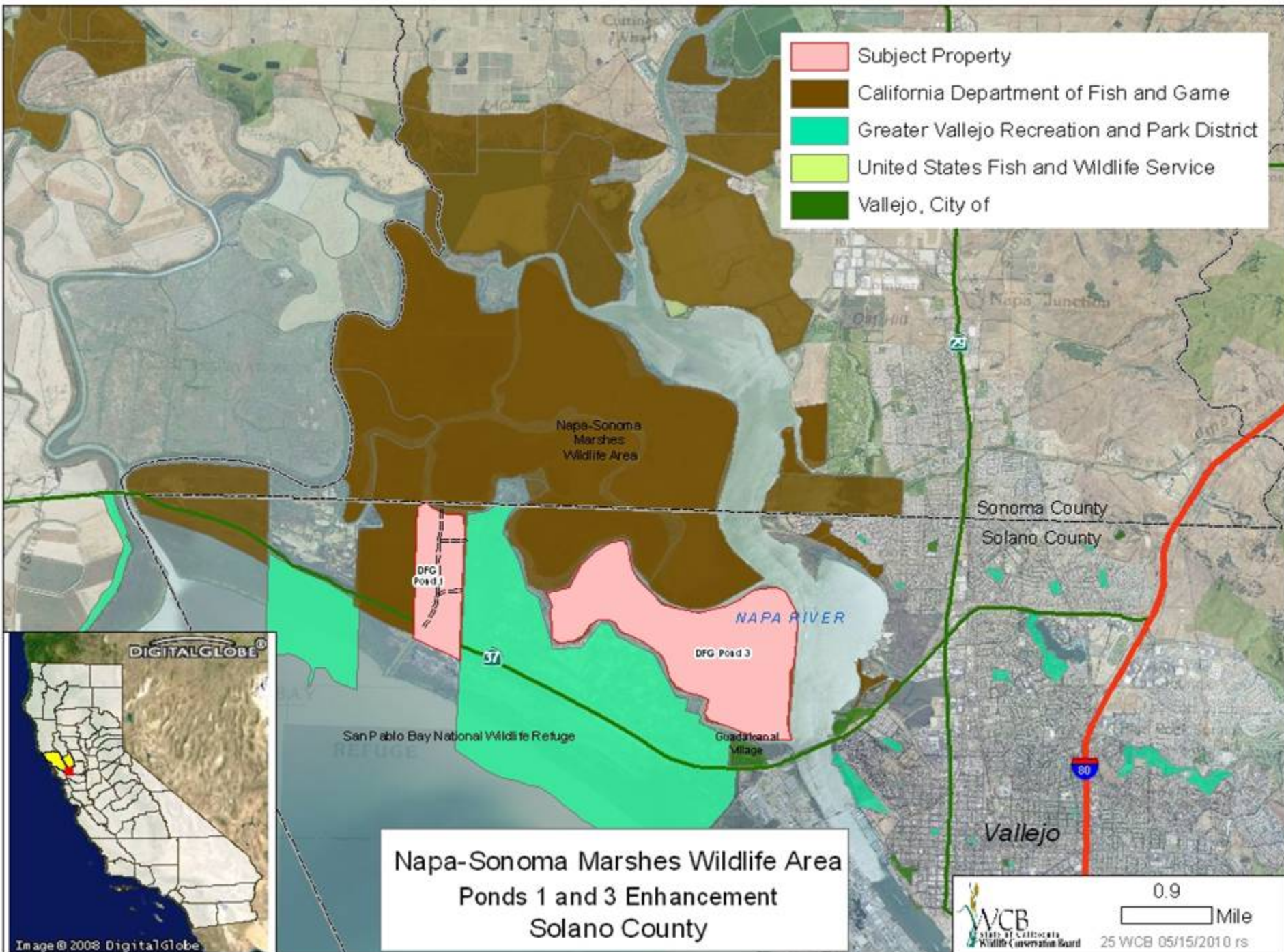
Overview of Pond 3 at high tide, north of Dutchman Slough and Cullinan Ranch from Highway 37 Bridge, looking northwest.

24 Cullinan Ranch Tidal Restoration Napa and Solano Counties



Looking east from Pond 1 levee road over Cullinan Ranch property.

- Subject Property
- California Department of Fish and Game
- Greater Vallejo Recreation and Park District
- United States Fish and Wildlife Service
- Vallejo, City of



25 Napa-Sonoma Marshes Wildlife Area, Ponds 1 and 3 Enhancement Solano County



Looking northeast from entrance on Pond 1 Levee Road, Cullinan Ranch property to the right.

25 Napa-Sonoma Marshes Wildlife Area, Ponds 1 and 3 Enhancement Solano County

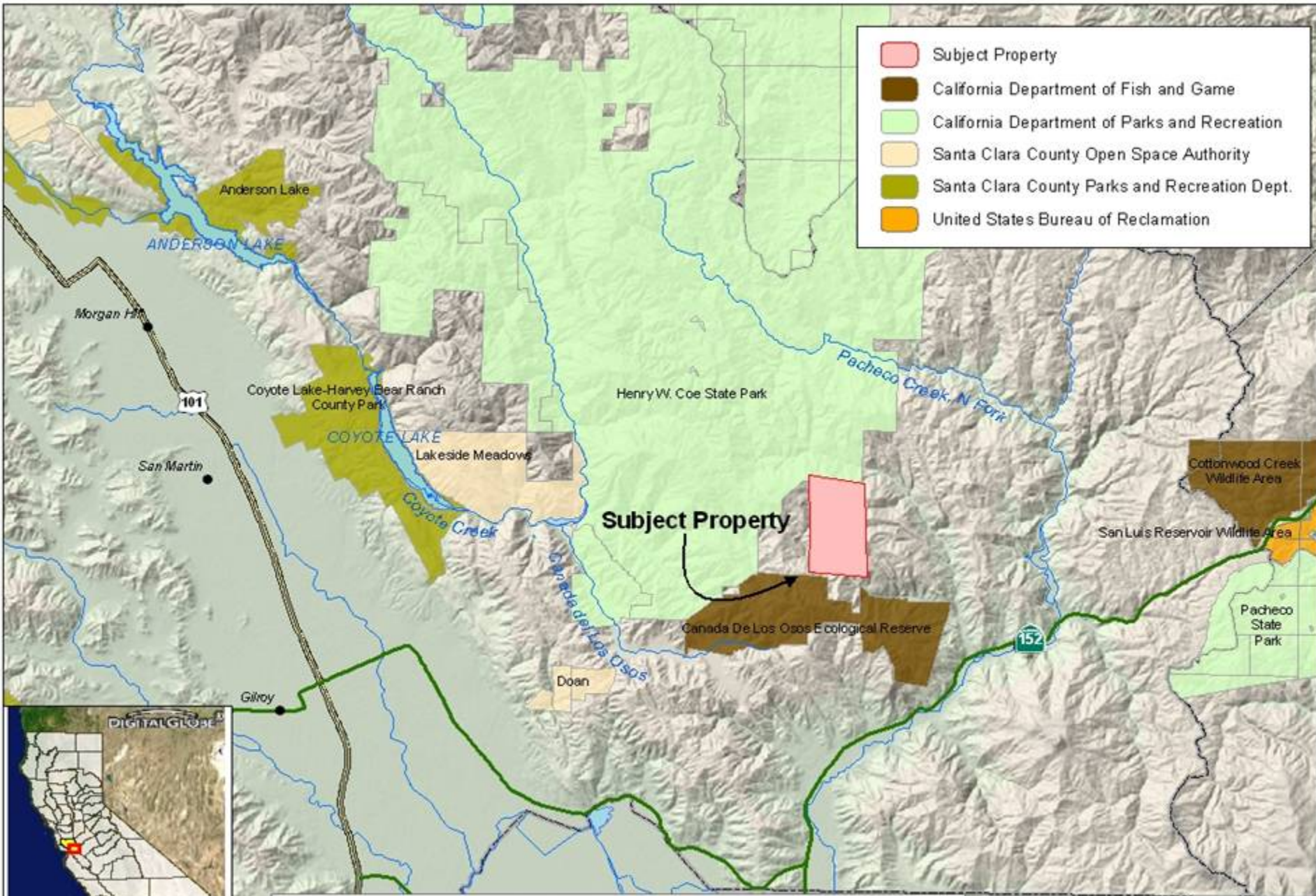


DFG Parking Lot at entry to Pond 1 Levee Road, just north of Highway 37 and west of Cullinan Ranch, looking north.

25 Napa-Sonoma Marshes Wildlife Area, Ponds 1 and 3 Enhancement Solano County



Looking north-northwest at Pond 1 from edge of parking area just off Highway 37.



- Subject Property
- California Department of Fish and Game
- California Department of Parks and Recreation
- Santa Clara County Open Space Authority
- Santa Clara County Parks and Recreation Dept.
- United States Bureau of Reclamation

Subject Property

Canada de Los Osos Ecological Reserve, Expansion 1
Santa Clara County

26 Canada de Los Osos Ecological Reserve, Expansion 1 Santa Clara County



Grasslands found on property

26 Canada de Los Osos Ecological Reserve, Expansion 1 Santa Clara County



Topography found on property

26 Canada de Los Osos Ecological Reserve, Expansion 1 Santa Clara County



One of several ponds found on the property

26 Canada de Los Osos Ecological Reserve, Expansion 1 Santa Clara County



Typical woodlands found on property

27 Millar Ranch Oak Woodlands Madera County



Ranch Overview

27 Millar Ranch Oak Woodlands Madera County



Representative Valley Oak

27 Millar Ranch Oak Woodlands Madera County



Fine Gold Creek Riparian Habitat

27 Millar Ranch Oak Woodlands Madera County



Fine Gold Creek Stream Meadow Habitat

27 Millar Ranch Oak Woodlands Madera County



Yellow Mariposa Lily

27 Millar Ranch Oak Woodlands Madera County

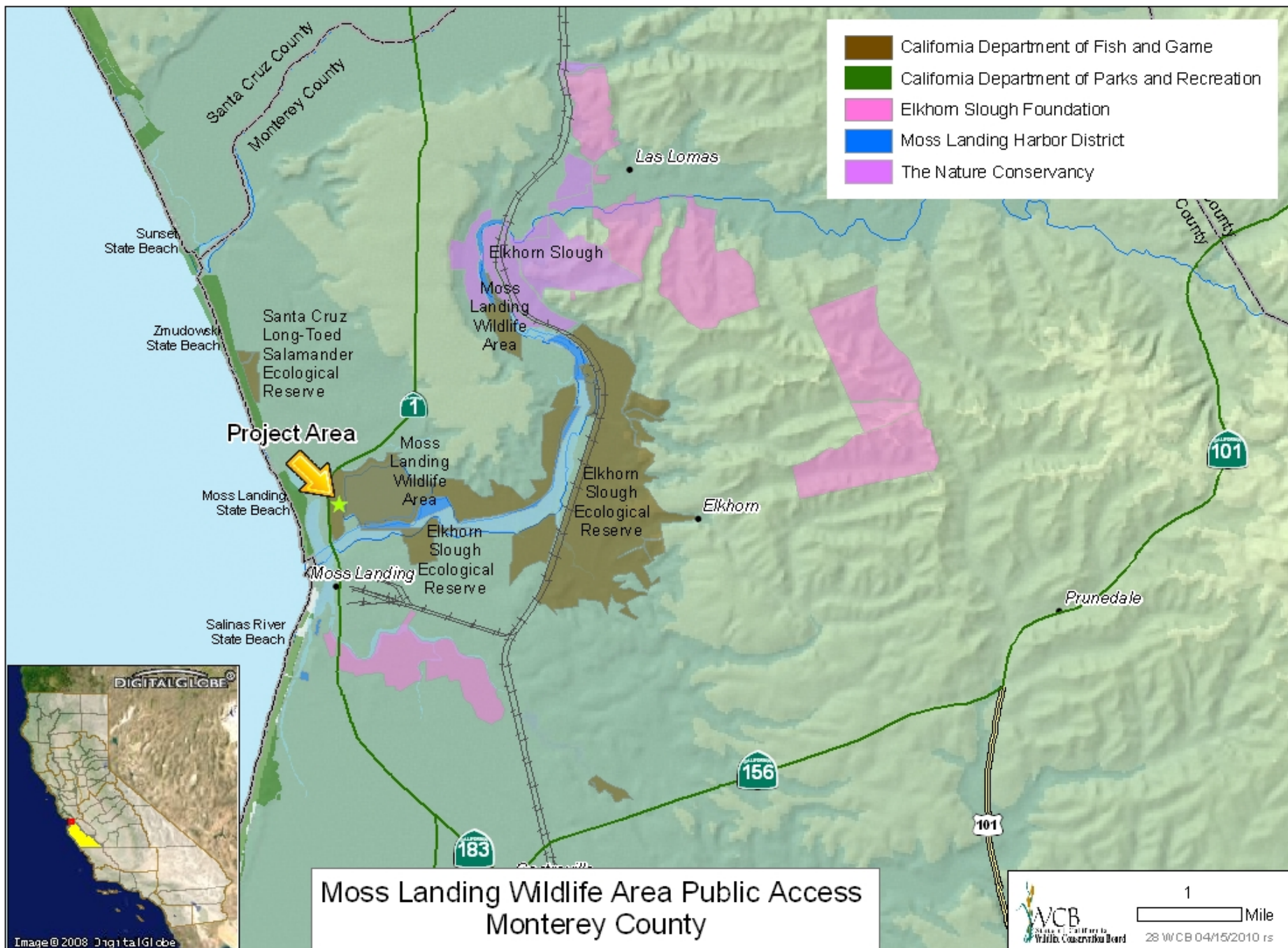


Representative Valley Oak and Blue Oak

27 Millar Ranch Oak Woodlands Madera County



Mixed Oak Woodland (Foothill Pine, Blue Oak, Live Oak) Ranch Overview





28 Moss Landing Wildlife Area Public Access Monterey County



Old wooden access bridge to be replaced by new ADA compliant earthen ramp.

28 Moss Landing Wildlife Area Public Access Monterey County



Parking lot to be raised with gravel to prevent flooding.

28 Moss Landing Wildlife Area Public Access Monterey County



Existing debris to be cleaned to enhance existing salt marsh.

28 Moss Landing Wildlife Area Public Access Monterey County



Existing Observation Pier will be renovated.

28 Moss Landing Wildlife Area Public Access Monterey County



Common View from the Observation Pier.

28 Moss Landing Wildlife Area Public Access Monterey County

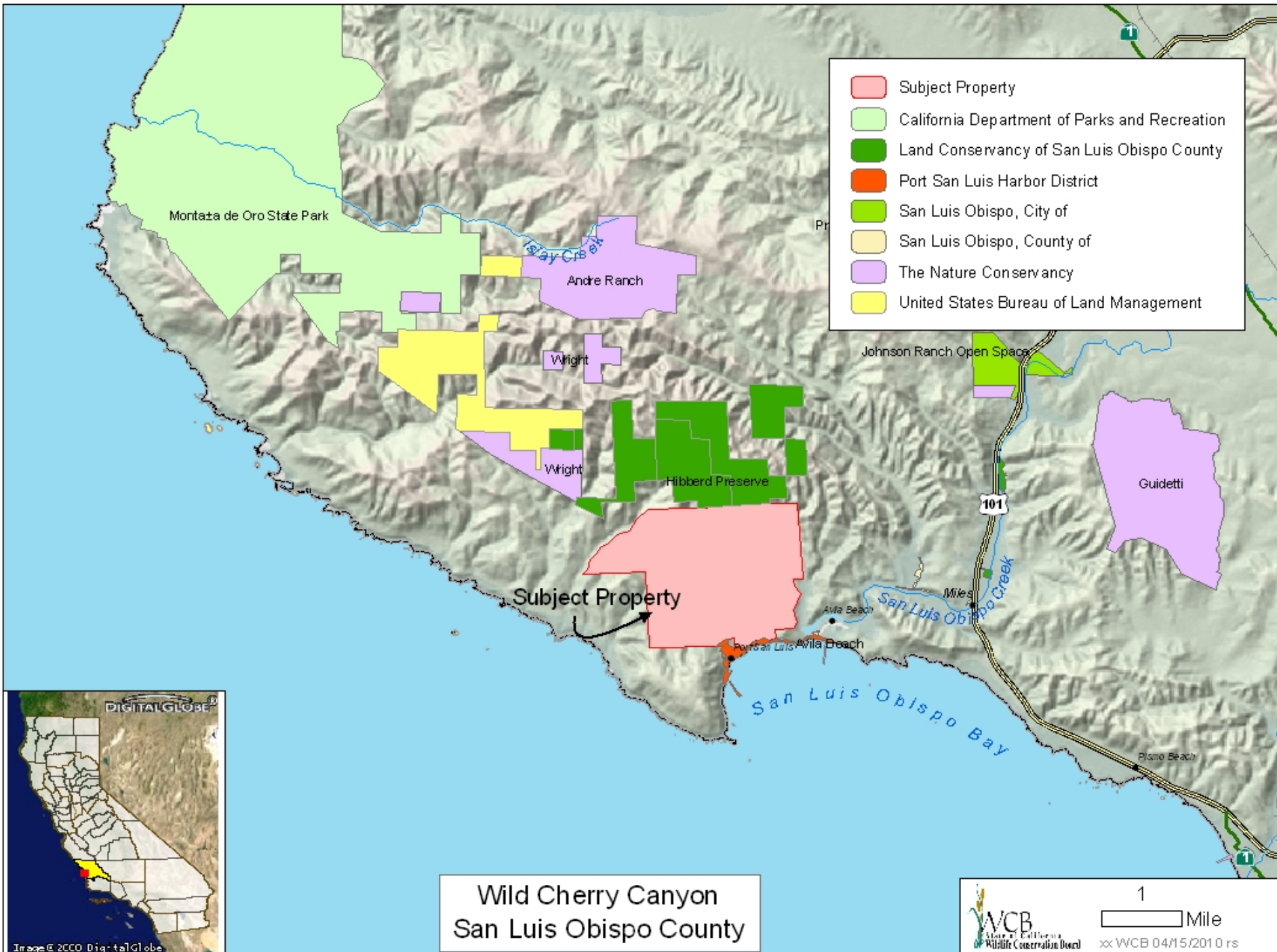


Foraging shorebirds at Moss Landing Wildlife Area.

28 Moss Landing Wildlife Area Public Access Monterey County



Nesting Snowy Plover. (Courtesy J. Erbes, PRBO)



- Subject Property
- California Department of Parks and Recreation
- Land Conservancy of San Luis Obispo County
- Port San Luis Harbor District
- San Luis Obispo, City of
- San Luis Obispo, County of
- The Nature Conservancy
- United States Bureau of Land Management

Wild Cherry Canyon
San Luis Obispo County

29 Wild Cherry Canyon San Luis Obispo County



Looking east along the coast from the center of the property toward Pismo Beach
Wild Cherry Canyon in left center of photo.

29 Wild Cherry Canyon San Luis Obispo County



Northeast across the Irish Hills with Garcia Mountain and Los Padres National Forest in background.

29 Wild Cherry Canyon San Luis Obispo County

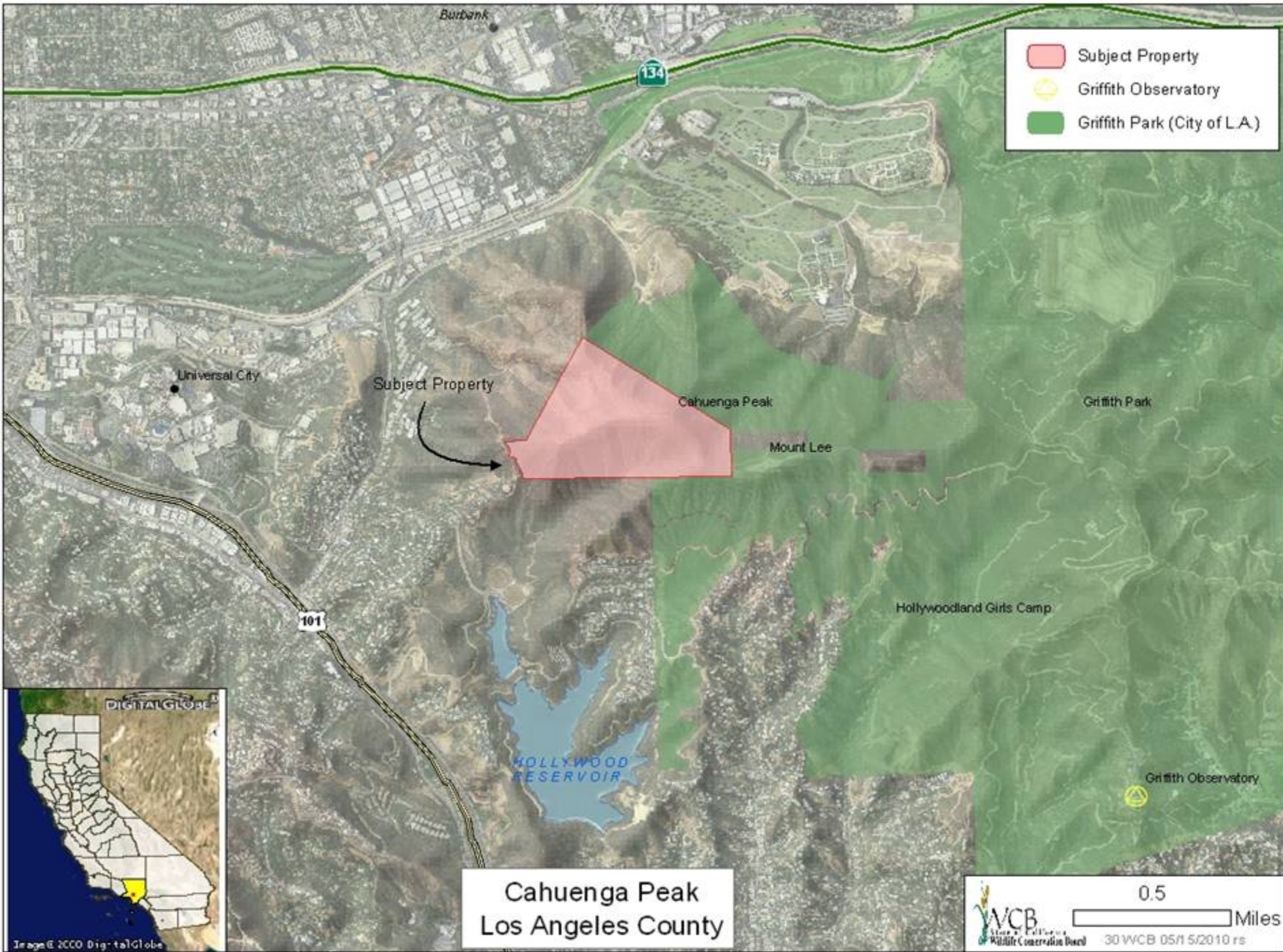


Looking south across San Luis Obispo Bay with Port San Luis Pier in middle ground and Point Sal (Santa Barbara County) in distance.

29 Wild Cherry Canyon San Luis Obispo County



Oak forest in the heart of the property.



- Subject Property
- Griffith Observatory
- Griffith Park (City of L.A.)



Cahuenga Peak
Los Angeles County

30 Cahuenga Peak Los Angeles County



Cahuenga Peak from Hollywood.

30 Cahuenga Peak Los Angeles County



Hiking one of several trails.

30 Cahuenga Peak Los Angeles County



Lake Hollywood

30 Cahuenga Peak Los Angeles County



The view of Cahuenga Peak and the Hollywood sign from Lake Hollywood.

30 Cahuenga Peak Los Angeles County



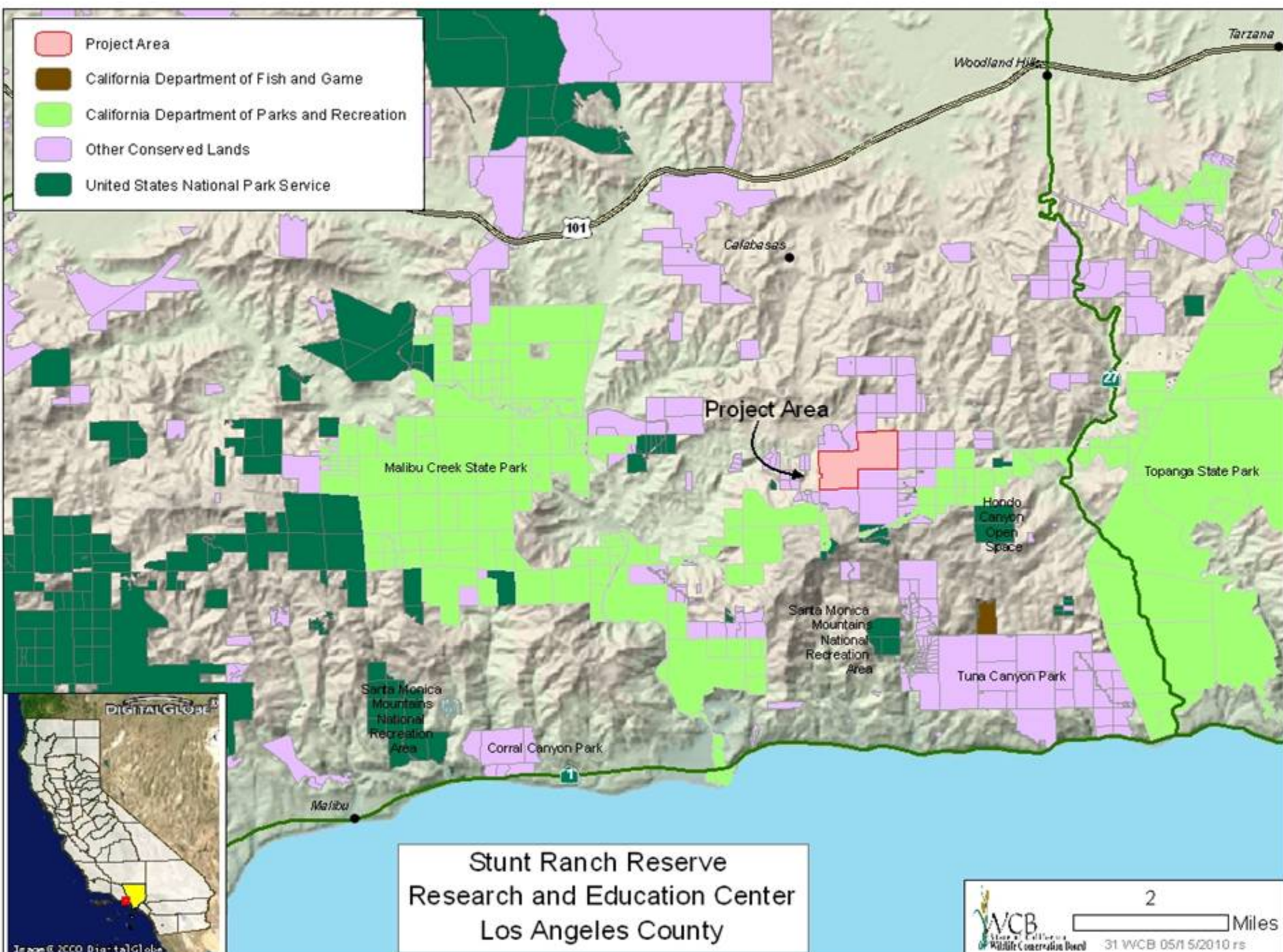
Cahuenga Peak in the foreground.

30 Cahuenga Peak Los Angeles County



Looking west.

- Project Area
- California Department of Fish and Game
- California Department of Parks and Recreation
- Other Conserved Lands
- United States National Park Service



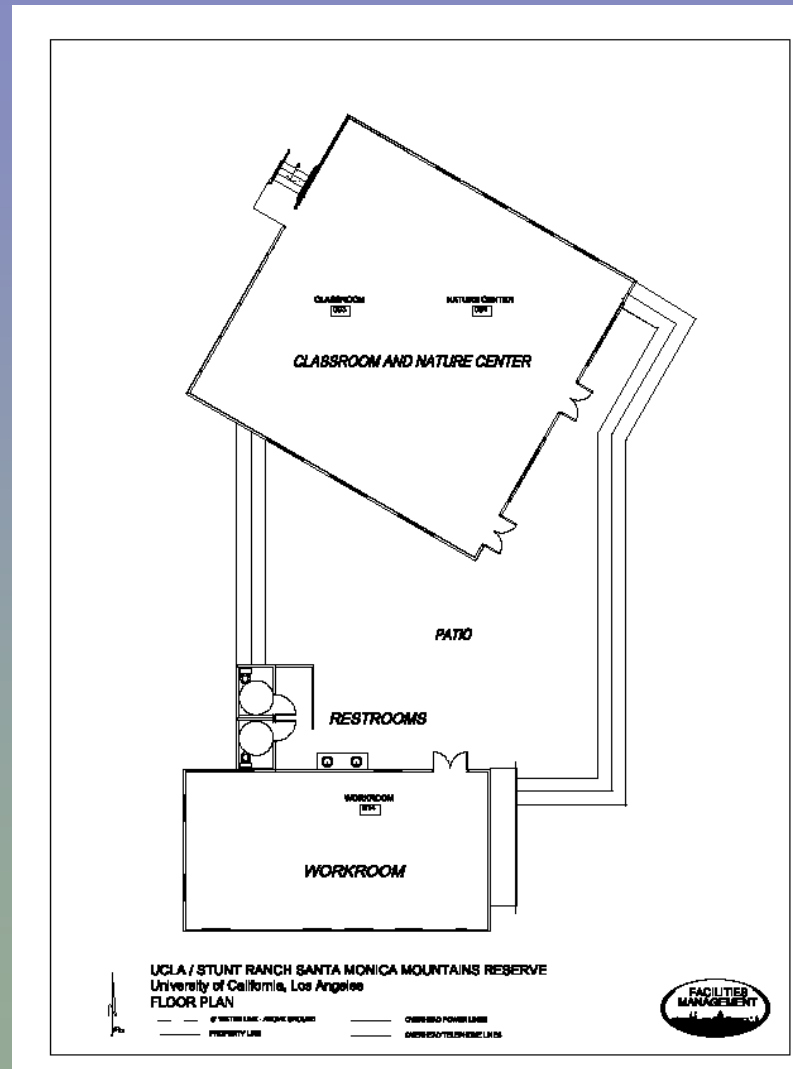
Stunt Ranch Reserve
Research and Education Center
Los Angeles County

31 Stunt Ranch Reserve Research and Education Center Los Angeles County



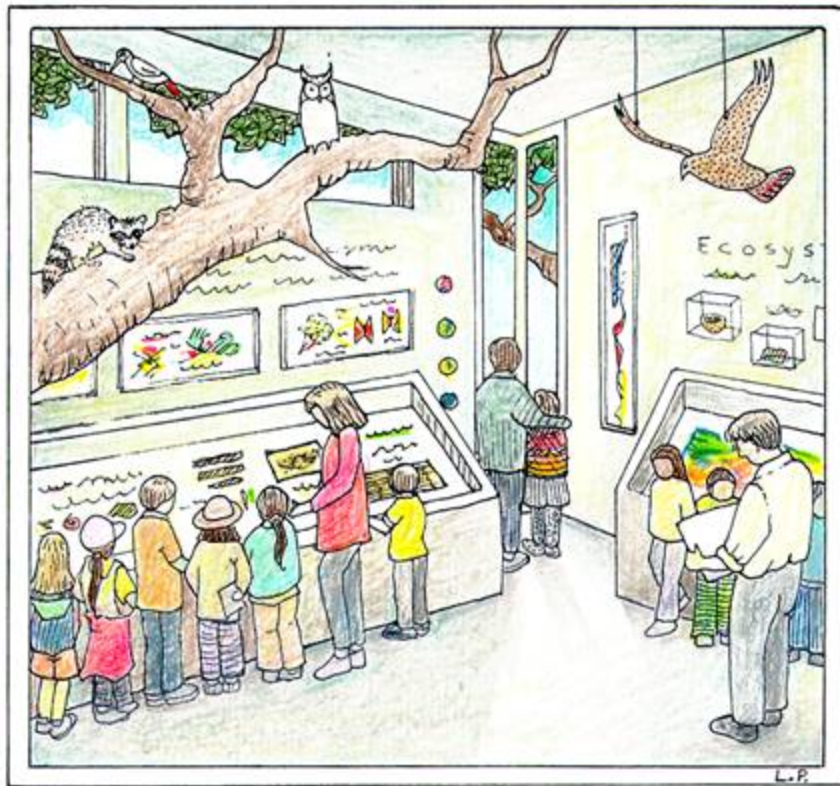
Currently, there is a trailer located at the project site. The trailer will be moved off site and the new facilities will be situated on top of a deck/foundation that spans from the existing concrete pads located on either side of the existing trailer.

31 Stunt Ranch Reserve Research and Education Center Los Angeles County

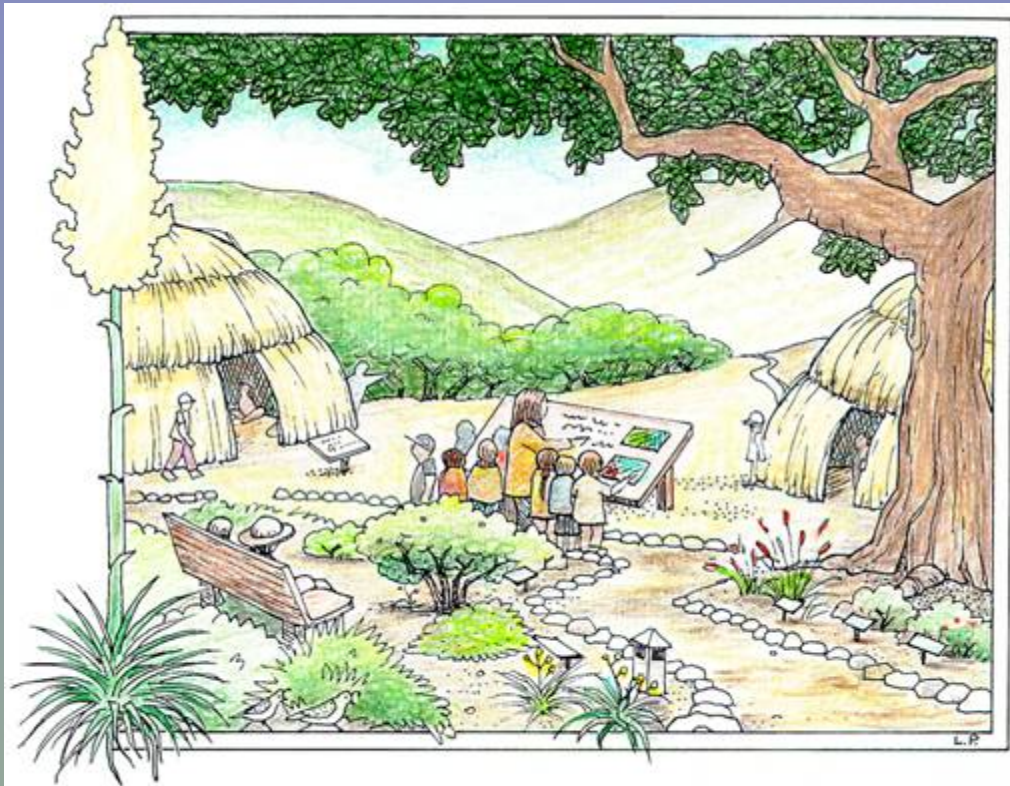


Floor plan of the modular buildings located atop the deck/foundation.

31 Stunt Ranch Reserve Research and Education Center Los Angeles County



Nature Center interior



Replica Chumash village and interpretive trail

Artist's depiction of the Nature Center and replica Chumash village. The village will be located adjacent to the facilities along a nature trail.



32 Los Cerritos Wetlands Orange County



Access to subject property through Gum Grove Park.

32 Los Cerritos Wetlands Orange County



Brackish water from the San Gabriel River.

32 Los Cerritos Wetlands Orange County



32 Los Cerritos Wetlands Orange County



High Tide