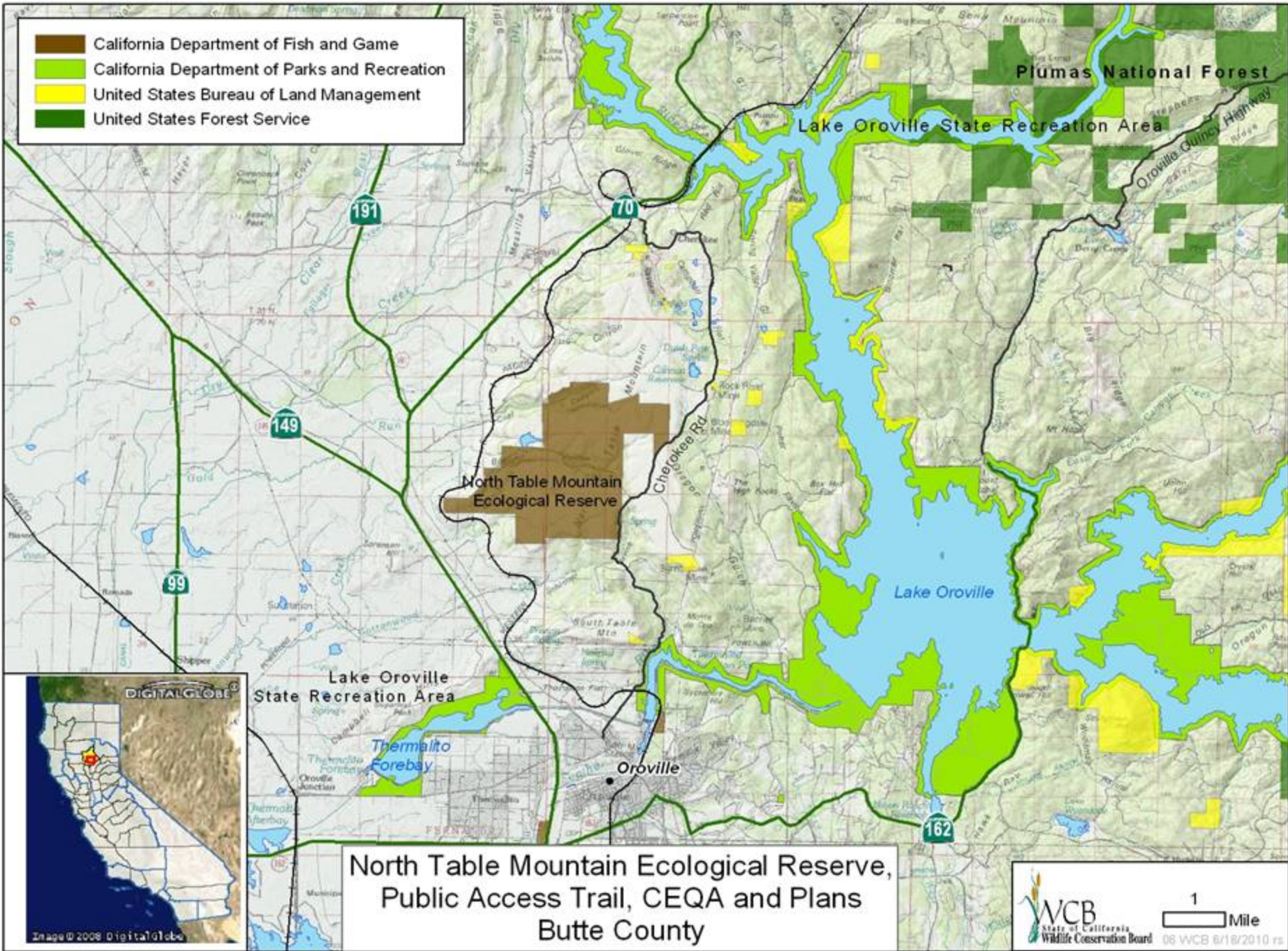


August 26, 2010 WCB Board Meeting
10:00 a.m., State Capitol, Room 112
Sacramento, California 95814



Alpine Meadow
Goodwin Red Clover Valley Ranches
Plumas County

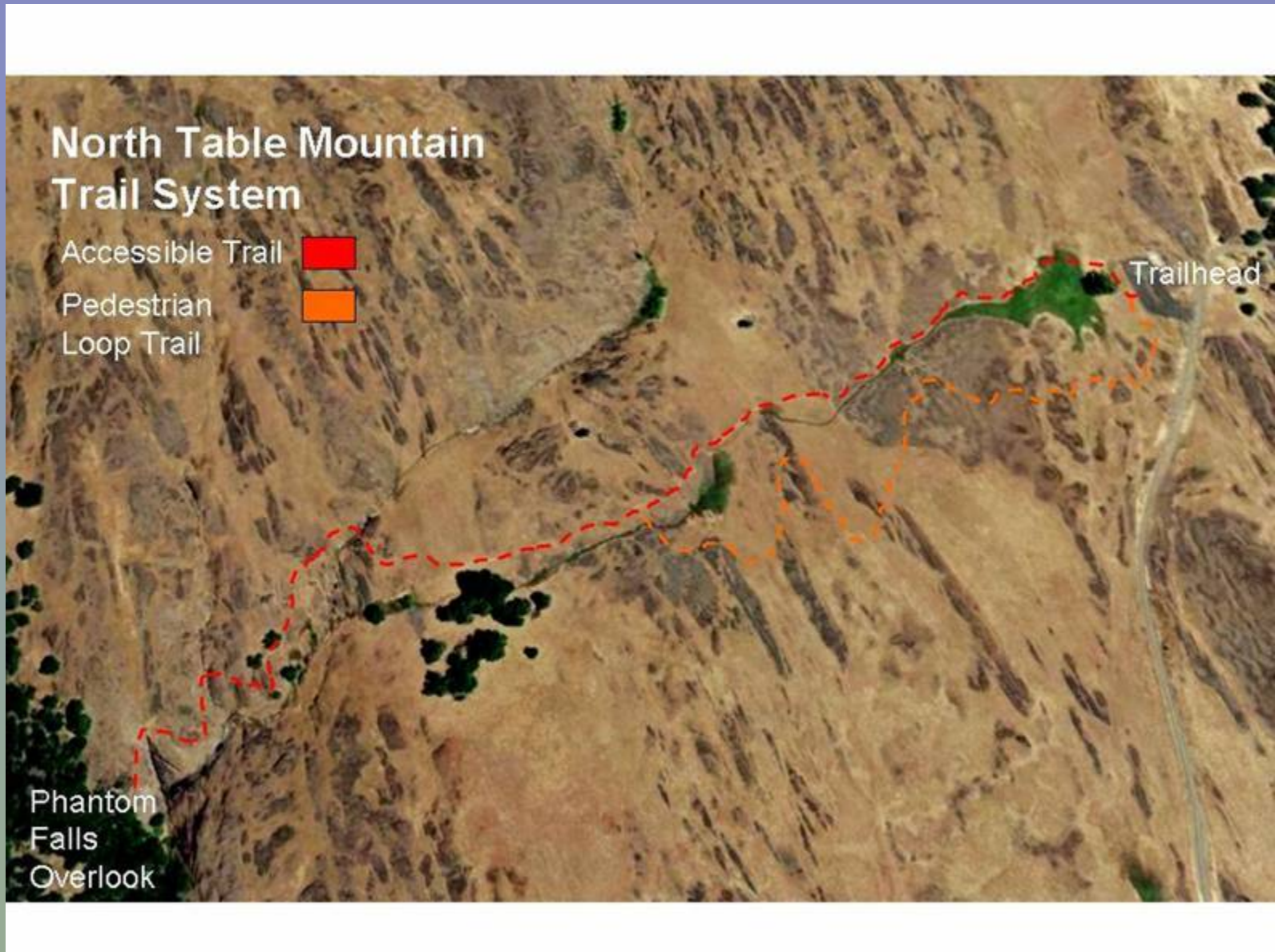
- California Department of Fish and Game
- California Department of Parks and Recreation
- United States Bureau of Land Management
- United States Forest Service



**North Table Mountain Ecological Reserve,
Public Access Trail, CEQA and Plans
Butte County**


1 Mile
State of California Wildlife Conservation Board

6 North Table Mountain Ecological Reserve, Public Access Trail (CEQA and Plans) Butte County



6 North Table Mountain Ecological Reserve, Public Access Trail (CEQA and Plans) Butte County



Proposed trailhead (top right)

6 North Table Mountain Ecological Reserve,
Public Access Trail (CEQA and Plans)
Butte County

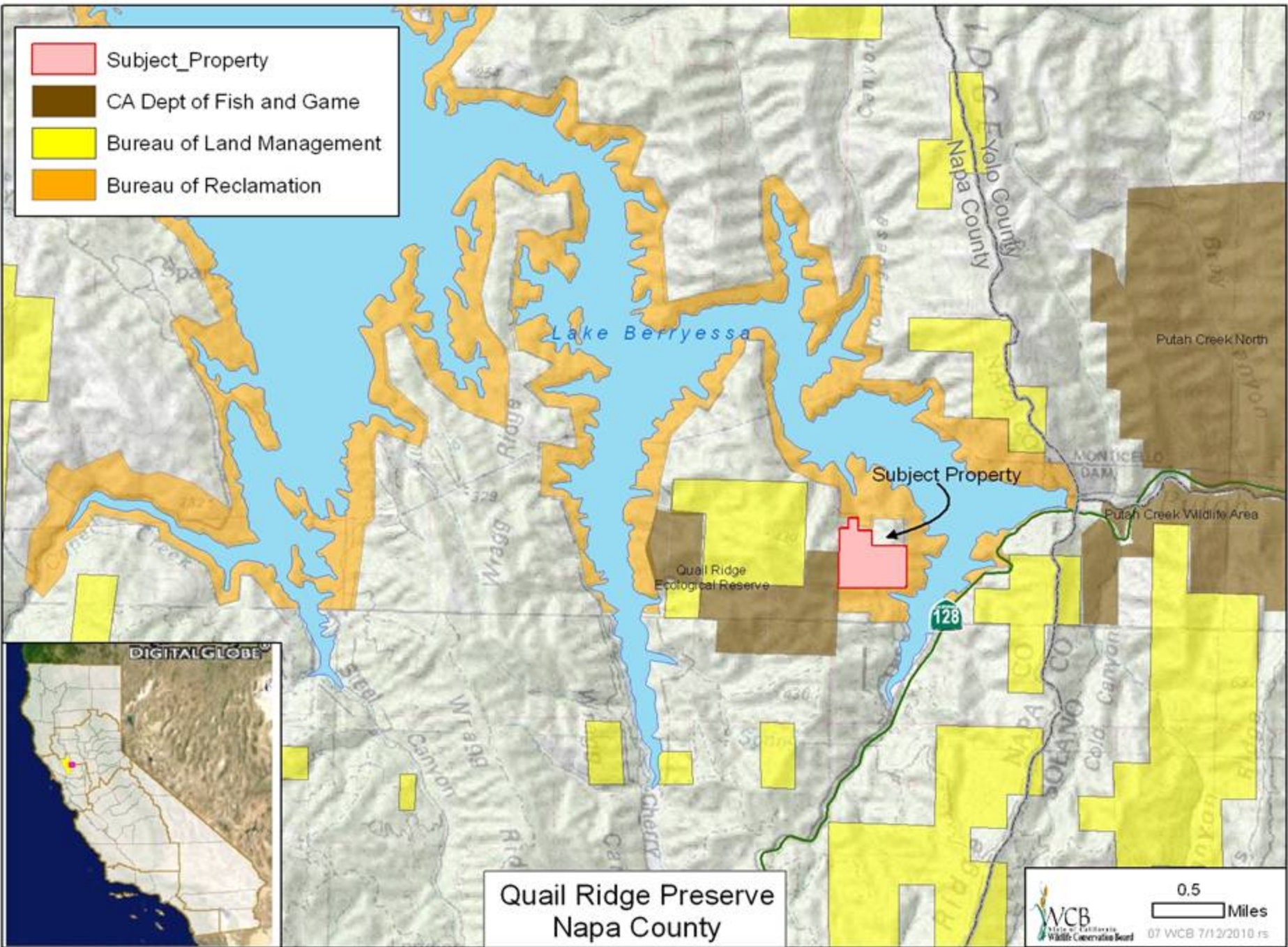


End of proposed trail - Phantom Falls

6 North Table Mountain Ecological Reserve, Public Access Trail (CEQA and Plans) Butte County



Current parking lot and entrance are not ADA accessible.



Quail Ridge Preserve
Napa County

7 Quail Ridge Reserve Napa County



View North Toward Property, Easement Road In Foreground.

7 Quail Ridge Reserve Napa County



Example of Solar Powered Communications Station.

- Subject Property
- California Department of Fish and Game
- United States Bureau of Land Management
- United States Forest Service

Sky Meadow Ranch

Inyo National Forest

Valley View Rd

Rimrock Dr

Inyo National Forest

Swall Meadows



**Wheeler Ridge, Expansion 2
Mono County**



WCB
State of California
Wildlife Conservation Board

1,000
Feet



08 WCB 07/22/2010 rs

8 Wheeler Ridge, Expansion 2 Mono County



Looking south past Tom's Place and the wintering valley for the Mule Deer.

8 Wheeler Ridge, Expansion 2 Mono County



Looking west at Wheeler Ridge.

8 Wheeler Ridge, Expansion 2 Mono County



Looking southwest at deer range habitat which is being subdivided into 2 acre lots for residential development.

8 Wheeler Ridge, Expansion 2 Mono County



Mule deer crossing the valley.

9 DFG Land Management Plans, Inland Desert Region, Phase II, Augmentation Riverside County



White-faced ibis over seasonal wetlands

9 DFG Land Management Plans, Inland Desert Region, Phase II, Augmentation Riverside County



Permanent wetlands and riparian habitat

9 DFG Land Management Plans, Inland Desert Region, Phase II, Augmentation Riverside County



Riparian restoration project

9 DFG Land Management Plans, Inland Desert Region, Phase II, Augmentation Riverside County



Spring bloom at San Jacinto

9 DFG Land Management Plans, Inland Desert Region, Phase II, Augmentation Riverside County

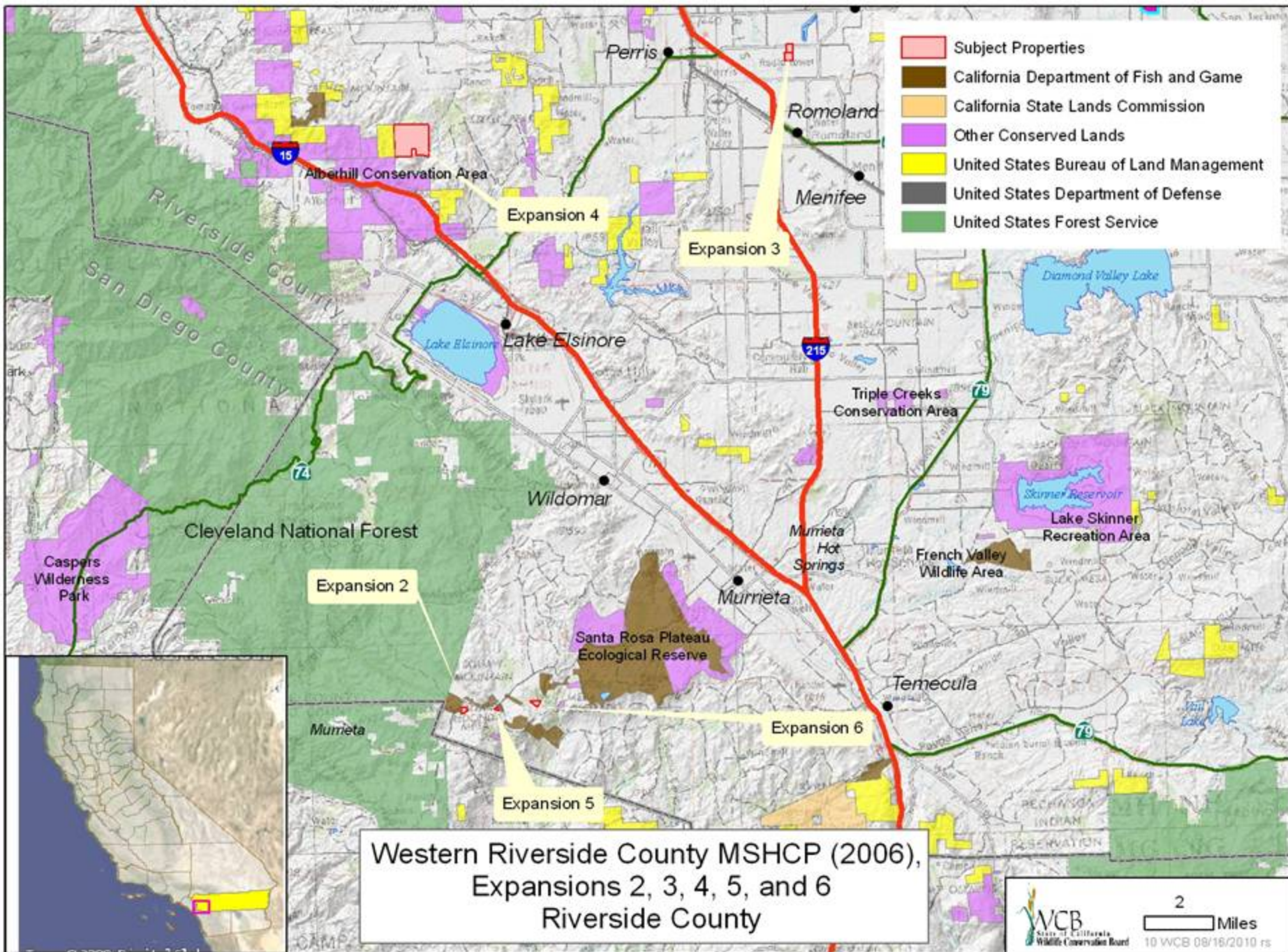


Potrero Unit uplands

9 DFG Land Management Plans, Inland Desert Region, Phase II, Augmentation Riverside County



Potrero Unit uplands



Western Riverside County MSHCP (2006),
 Expansions 2, 3, 4, 5, and 6
 Riverside County

10 Western Riverside County MSHCP (2006), Expansion 2 - 6 Riverside County



Expansion 2, Looking north on the property.

10 Western Riverside County MSHCP (2006), Expansion 2 - 6 Riverside County



Expansion 3, Looking north on the property.

10 Western Riverside County MSHCP (2006), Expansion 2 - 6 Riverside County



Expansion 4, Looking east on the property.

10 Western Riverside County MSHCP (2006), Expansion 2 - 6 Riverside County



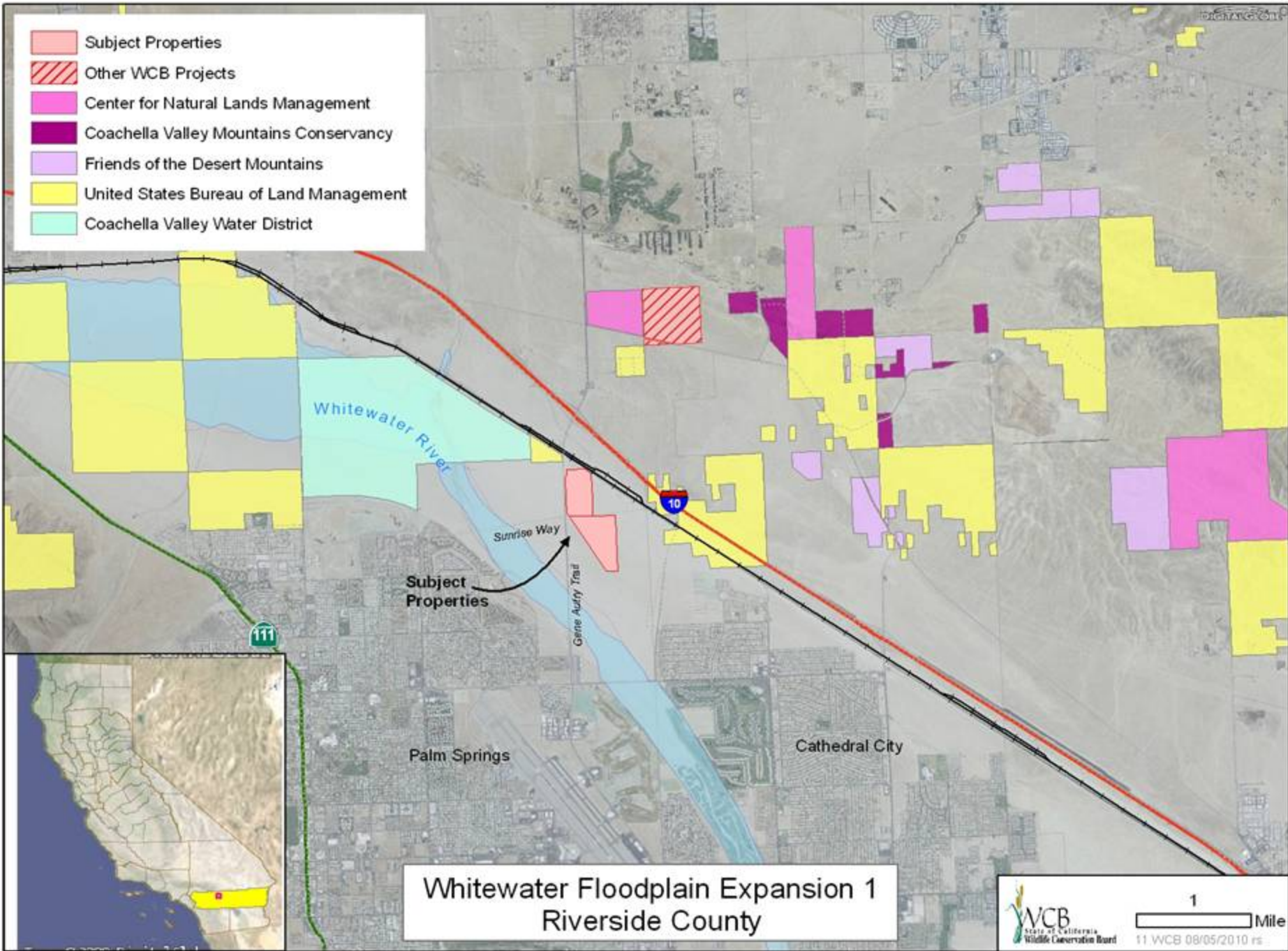
Expansion 5, Looking east on the property.

10 Western Riverside County MSHCP (2006), Expansion 2 - 6 Riverside County



Expansion 6, Looking northwest on the property.

- Subject Properties
- Other WCB Projects
- Center for Natural Lands Management
- Coachella Valley Mountains Conservancy
- Friends of the Desert Mountains
- United States Bureau of Land Management
- Coachella Valley Water District



**Whitewater Floodplain Expansion 1
Riverside County**

11 Whitewater Floodplain, Expansion 1 Riverside County



Looking east from Gene Autry Trail.

11 Whitewater Floodplain, Expansion 1 Riverside County



Looking west over Gene Autry Trail at the original Whitewater Floodplain acquisition.

11 Whitewater Floodplain, Expansion 1 Riverside County



Looking north towards Highway 10 and the blowsand habitat.

11 Whitewater Floodplain, Expansion 1 Riverside County



Picture of Coachella Valley Fringe-toed lizard found on the property.

11 Whitewater Floodplain, Expansion 1 Riverside County



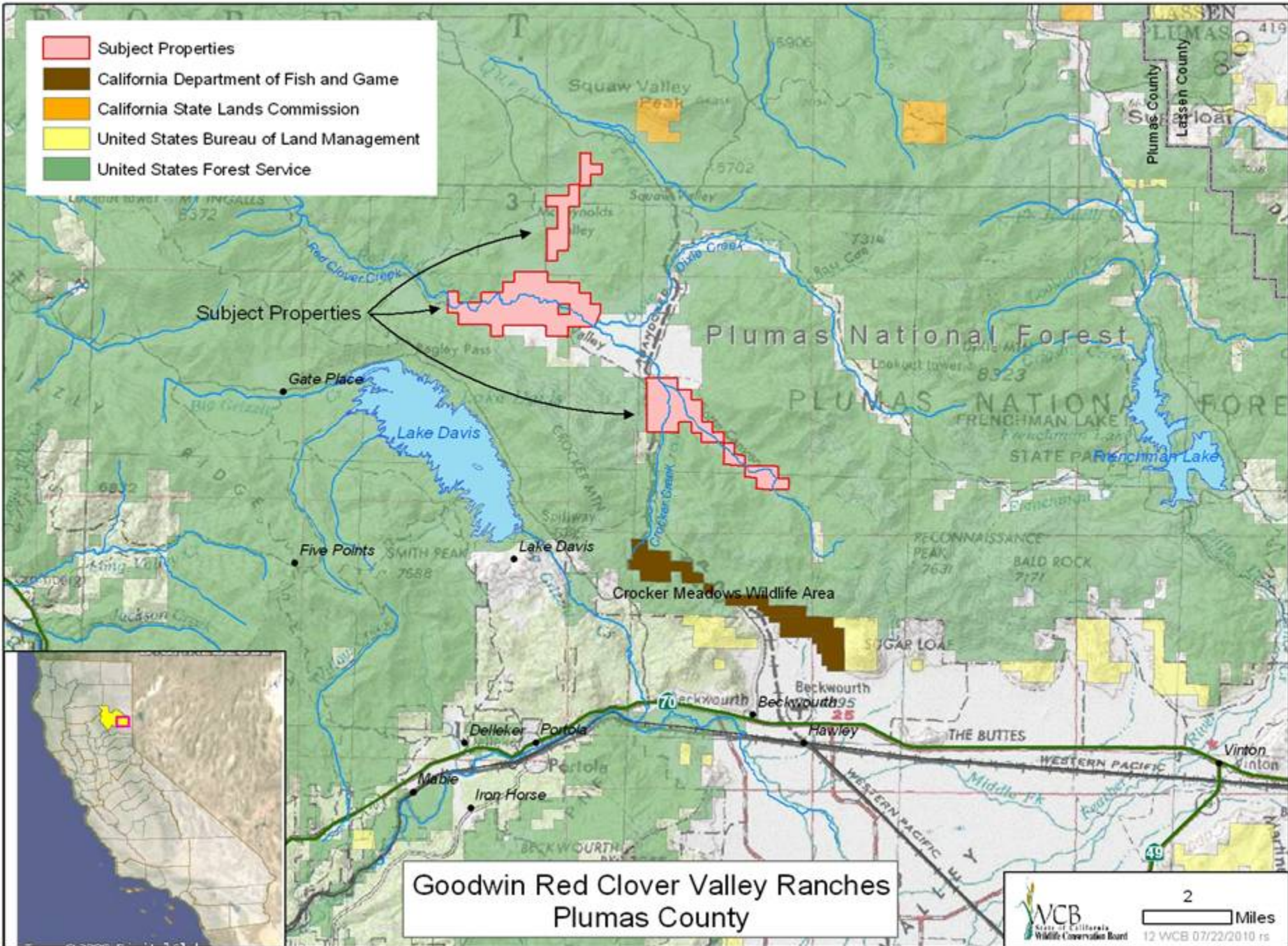
Another Coachella Valley Fringe-toed lizard found on the property.

- Subject Properties
- California Department of Fish and Game
- California State Lands Commission
- United States Bureau of Land Management
- United States Forest Service

Subject Properties

Goodwin Red Clover Valley Ranches
Plumas County


2 Miles
State of California
Wildlife Conservation Board
12 WCB 07/22/2010 rs



12 Goodwin Red Clover Valley Ranches Plumas County



Alpine meadow and surrounding pine forest

12 Goodwin Red Clover Valley Ranches Plumas County



Red Clover Valley alpine meadow flowers.

12 Goodwin Red Clover Valley Ranches Plumas County



Red Clover Valley wildflowers – the ranch has numerous ecological sites including wet meadows, forest, riparian areas, native grassland, sagebrush steppe.

12 Goodwin Red Clover Valley Ranches Plumas County



Lower Red Clover Creek restoration project.

12 Goodwin Red Clover Valley Ranches Plumas County



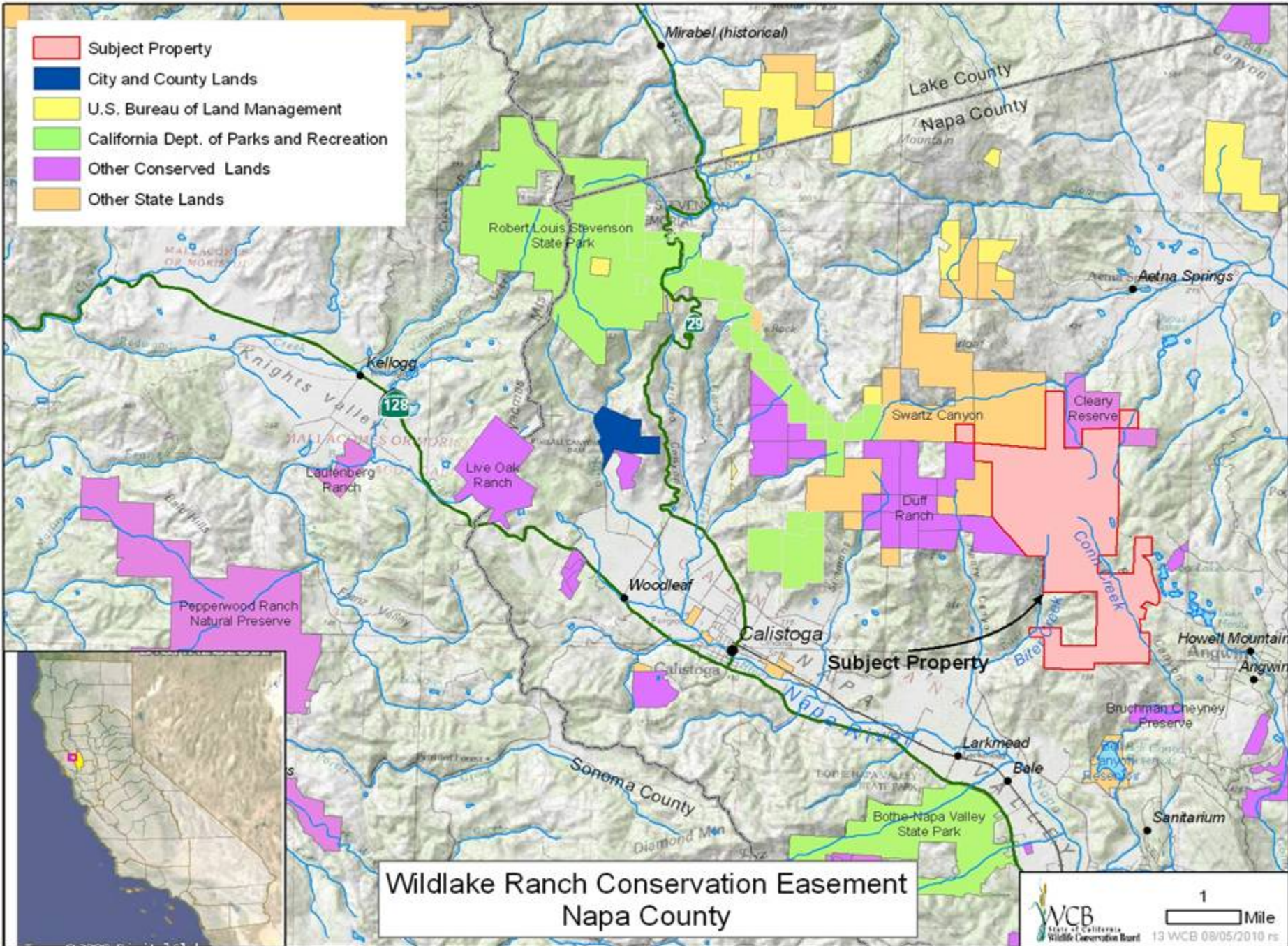
Red Clover Valley alpine meadow flowers.

12 Goodwin Red Clover Valley Ranches Plumas County



Goodwin Cattle – Red Clover Valley

- Subject Property
- City and County Lands
- U.S. Bureau of Land Management
- California Dept. of Parks and Recreation
- Other Conserved Lands
- Other State Lands



**Wildlake Ranch Conservation Easement
Napa County**

13 Wildlake Ranch Conservation Easement Napa County



Cobb Mountain Lupine, a locally rare plant that occurs on the Wildlake property.

13 Wildlake Ranch Conservation Easement Napa County



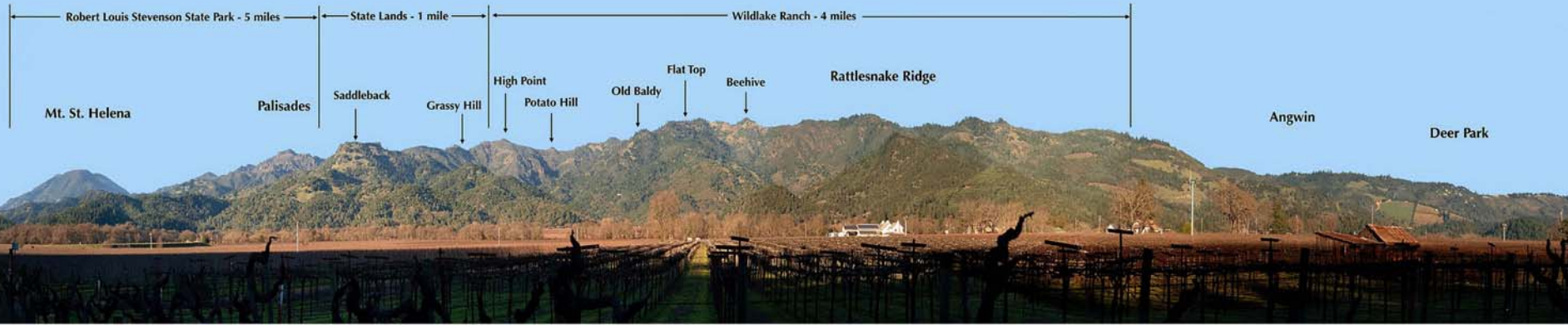
Lake at Wildlake Ranch.

13 Wildlake Ranch Conservation Easement Napa County



Spring flowers at Wildlake Ranch property.

13 Wildlake Ranch Conservation Easement Napa County



OVERVIEW OF NAPA VALLEY AND WILDLAKE RANCH

14 Marks Ranch Monterey County



Spring wildflowers on the property

14 Marks Ranch Monterey County



Photo of a badger taken on the property with a wildlife motion camera

14 Marks Ranch Monterey County



Grasslands and rolling hills found on the property

14 Marks Ranch Monterey County



Oak stands on the hills of the property

15 Alamo Creek Conservation Easement San Luis Obispo County



Mixed oak woodlands and grassland.

15 Alamo Creek Conservation Easement San Luis Obispo County



Eastern portion of the ranch.

15 Alamo Creek Conservation Easement San Luis Obispo County



View of Sierra Madre Mountains.

15 Alamo Creek Conservation Easement San Luis Obispo County



Sierra Madre Mountains.

15 Alamo Creek Conservation Easement San Luis Obispo County

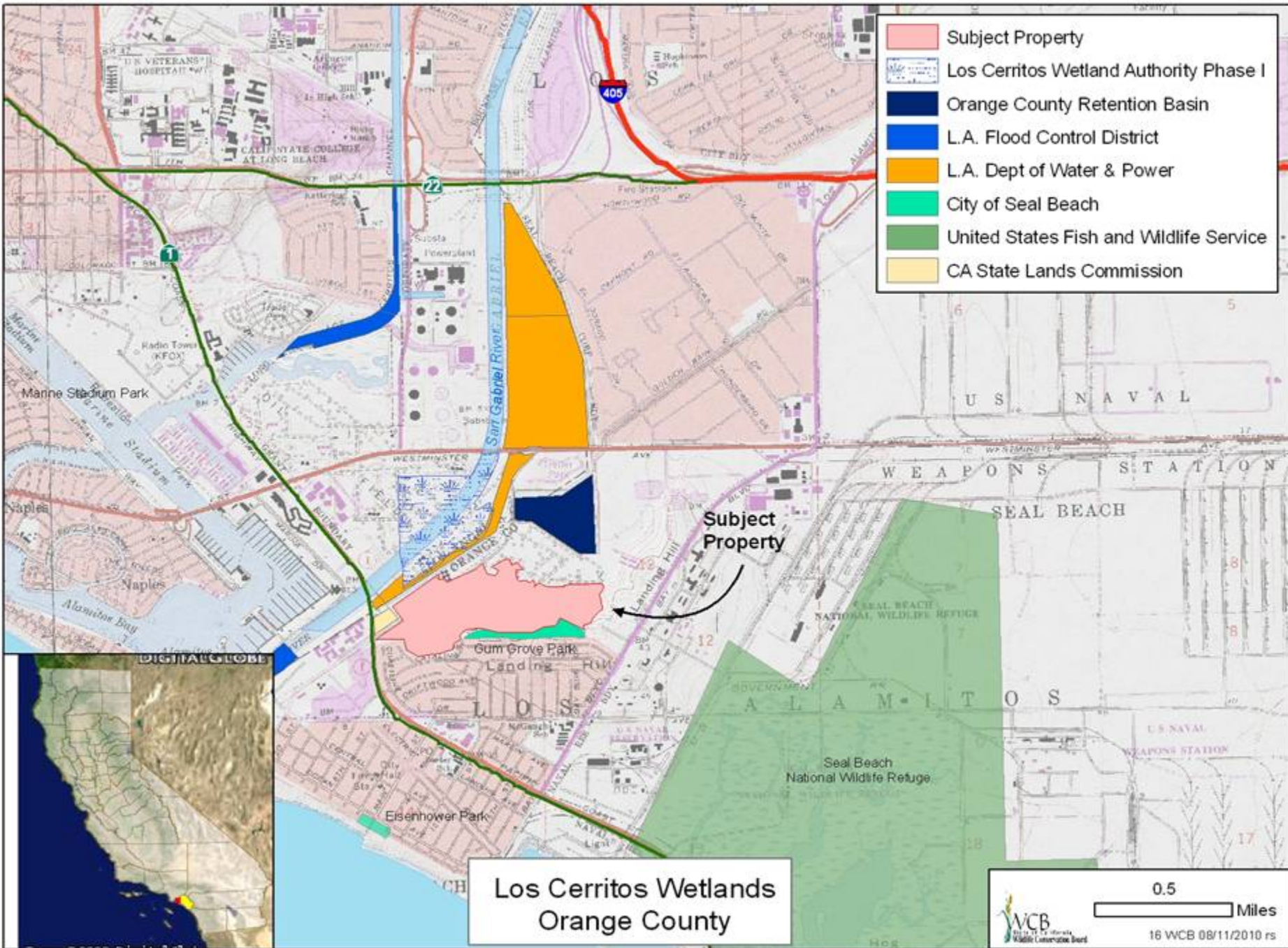


View of oaks from the center ridge.

15 Alamo Creek Conservation Easement San Luis Obispo County



Valley Oak Savannah-eastern portion of ranch.



Los Cerritos Wetlands
Orange County

16 Los Cerritos Wetlands Orange County



Access to subject property through Gum Grove Park.

16 Los Cerritos Wetlands Orange County



Brackish water from the San Gabriel River.

16 Los Cerritos Wetlands Orange County



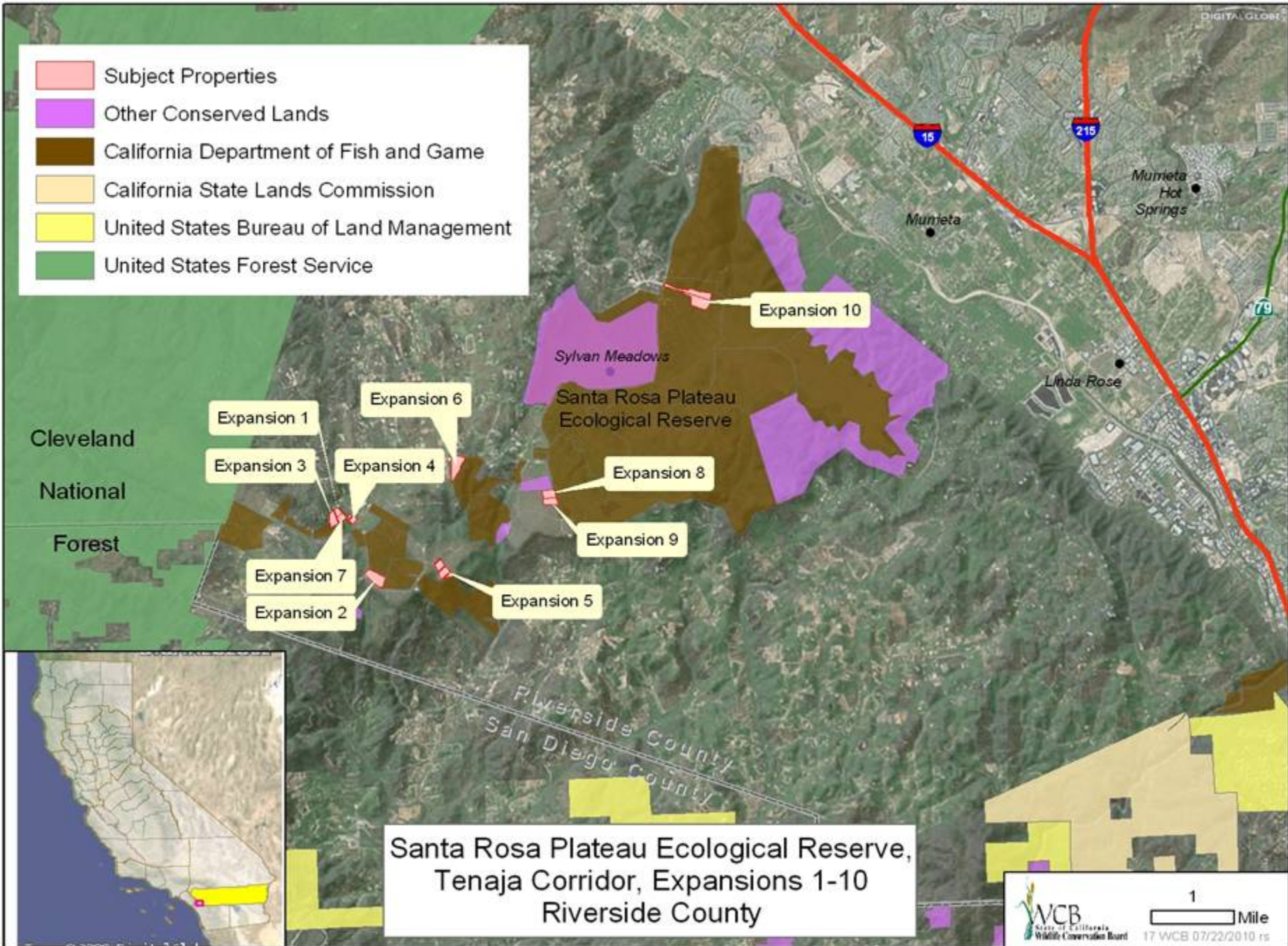
Low Tide.

16 Los Cerritos Wetlands Orange County



High Tide.

- Subject Properties
- Other Conserved Lands
- California Department of Fish and Game
- California State Lands Commission
- United States Bureau of Land Management
- United States Forest Service



Santa Rosa Plateau Ecological Reserve,
Tenaja Corridor, Expansions 1-10
Riverside County

17 Santa Rosa Plateau Ecological Reserve,
Tenaja Corridor, Expansions 1 - 10
Riverside County



Expansion 3

17 Santa Rosa Plateau Ecological Reserve,
Tenaja Corridor, Expansions 1 - 10
Riverside County



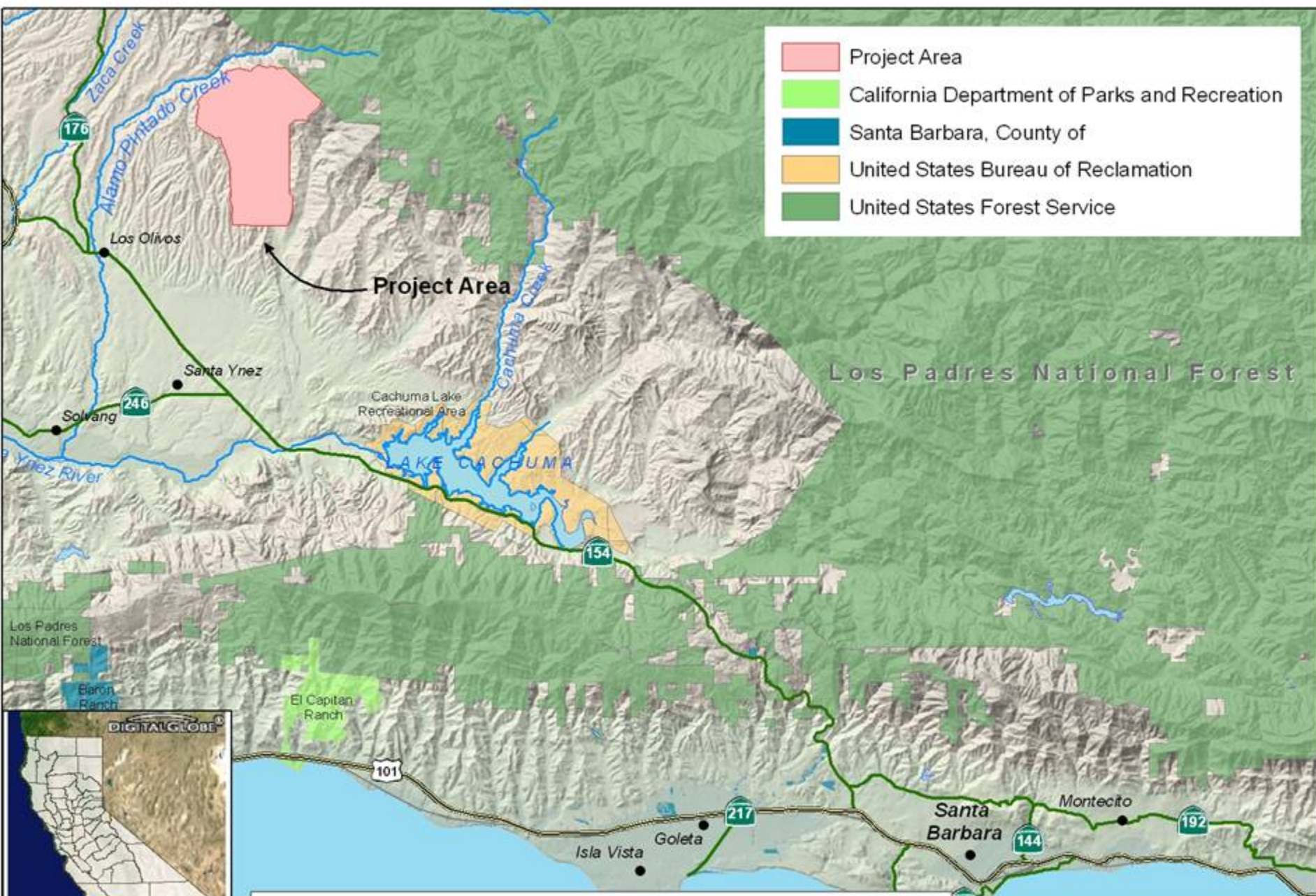
Expansion 6

17 Santa Rosa Plateau Ecological Reserve,
Tenaja Corridor, Expansions 1 - 10
Riverside County




Expansion 10


- Project Area
- California Department of Parks and Recreation
- Santa Barbara, County of
- United States Bureau of Reclamation
- United States Forest Service



**Sedgwick Reserve Infrastructure and Facilities Upgrade
Santa Barbara County**



5 Miles



18 WCB 7/21/2010 rs

18 Sedgwick Reserve Infrastructure and Facilities Upgrade Santa Barbara County



Sedgwick Reserve (headquarters area in center) located among oak woodlands.

18 Sedgwick Reserve Infrastructure and Facilities Upgrade Santa Barbara County

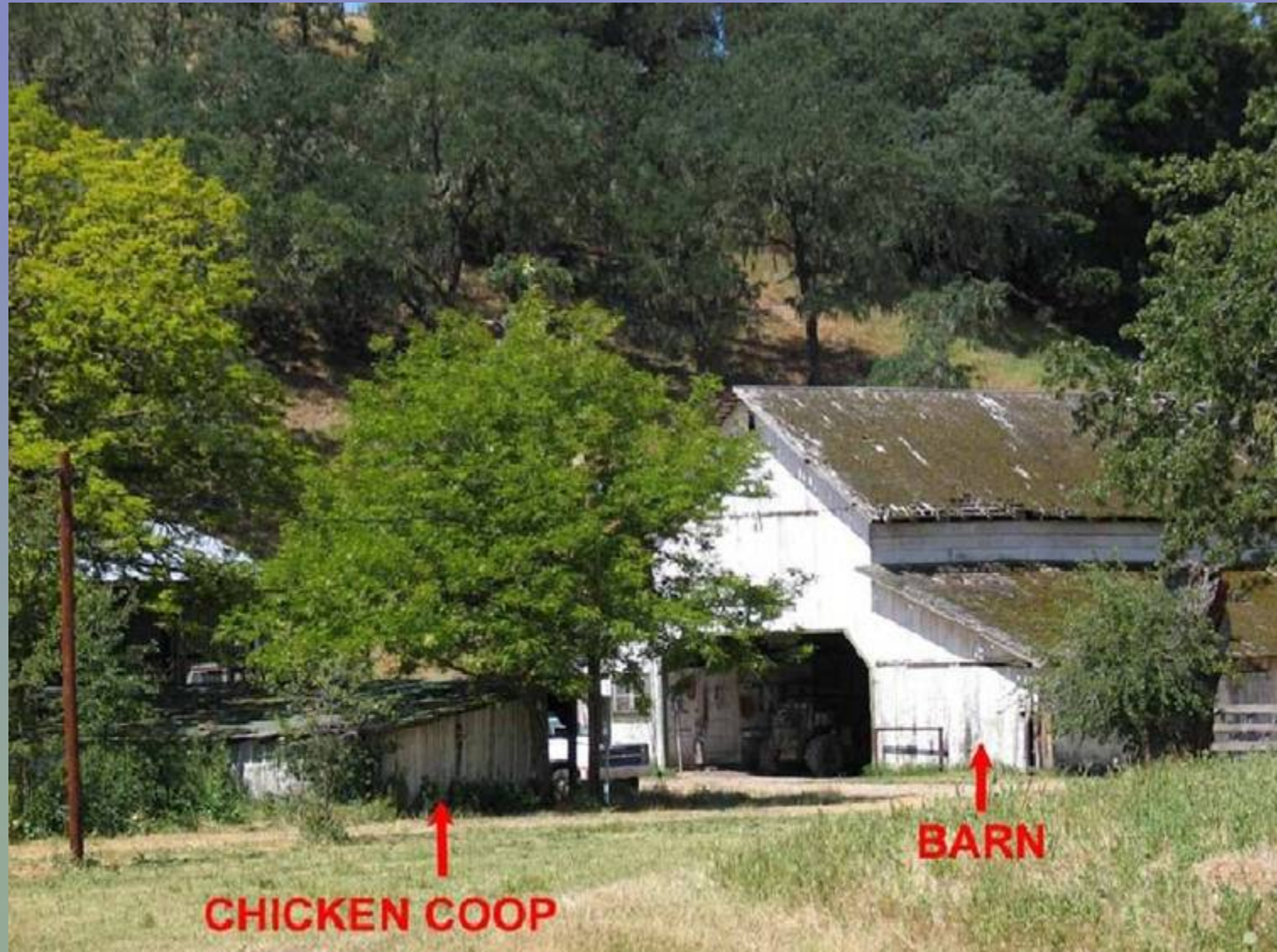


Current Utilities: On left, water hydrant is the terminus of current potable water system.

This will be the start of water distribution lines on the Reserve for this project.

On right, electrical panels will be removed from pole, consolidated, and attached to separate panel.

18 Sedgwick Reserve Infrastructure and Facilities Upgrade Santa Barbara County



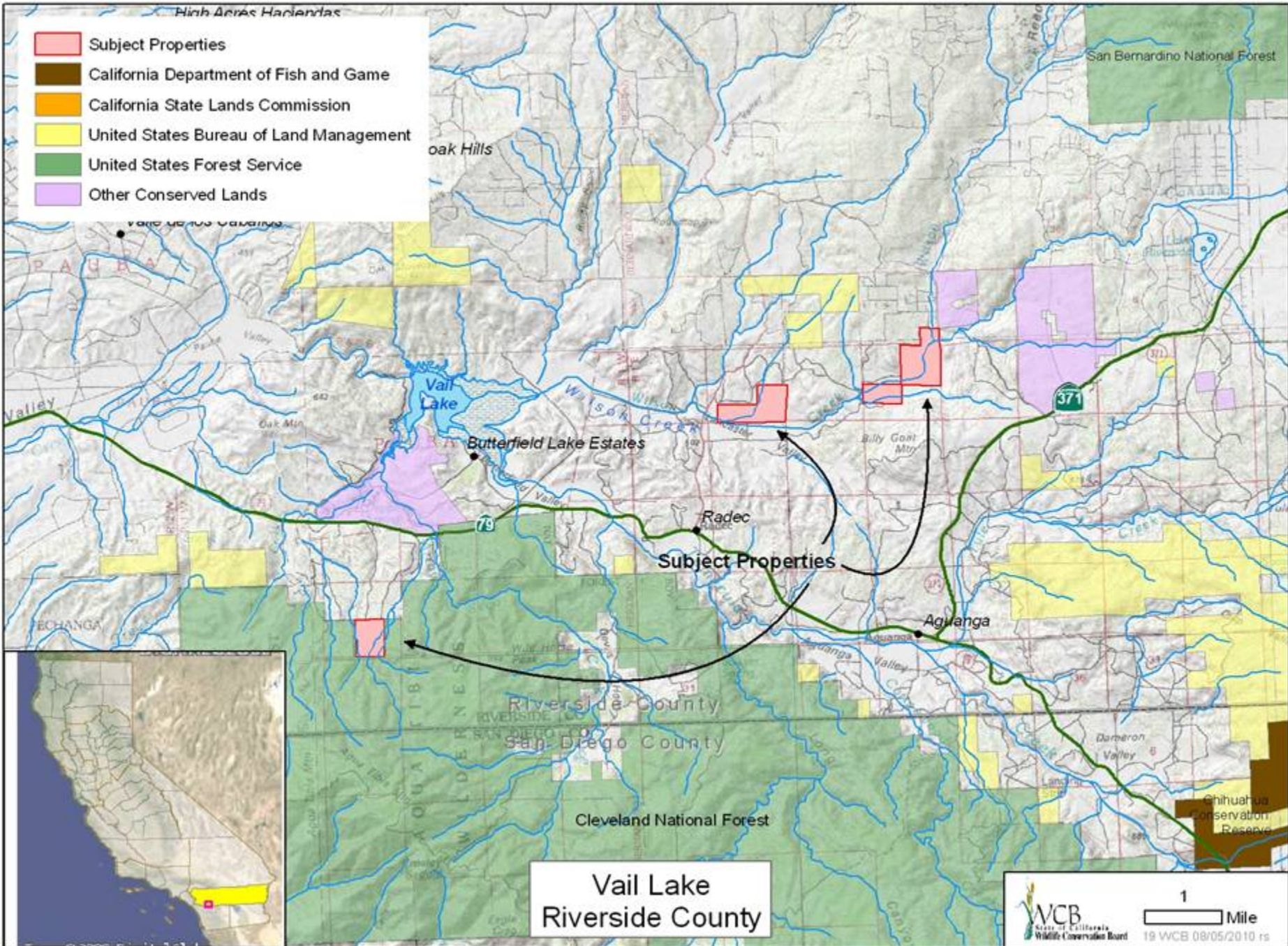
Chicken Coop to be demolished,
but historic barn will be preserved for now and renovated in future phase .

18 Sedgwick Reserve Infrastructure and Facilities Upgrade Santa Barbara County



Pole Barn will be demolished and a new Maintenance Shop will be placed within the boundary of the red outline.

- Subject Properties
- California Department of Fish and Game
- California State Lands Commission
- United States Bureau of Land Management
- United States Forest Service
- Other Conserved Lands



**Vail Lake
Riverside County**

19 Vail Lake Riverside County



Looking down towards the properties and Wilson Creek .

19 Vail Lake Riverside County



Looking west at the properties and Vail Lake.

19 Vail Lake Riverside County

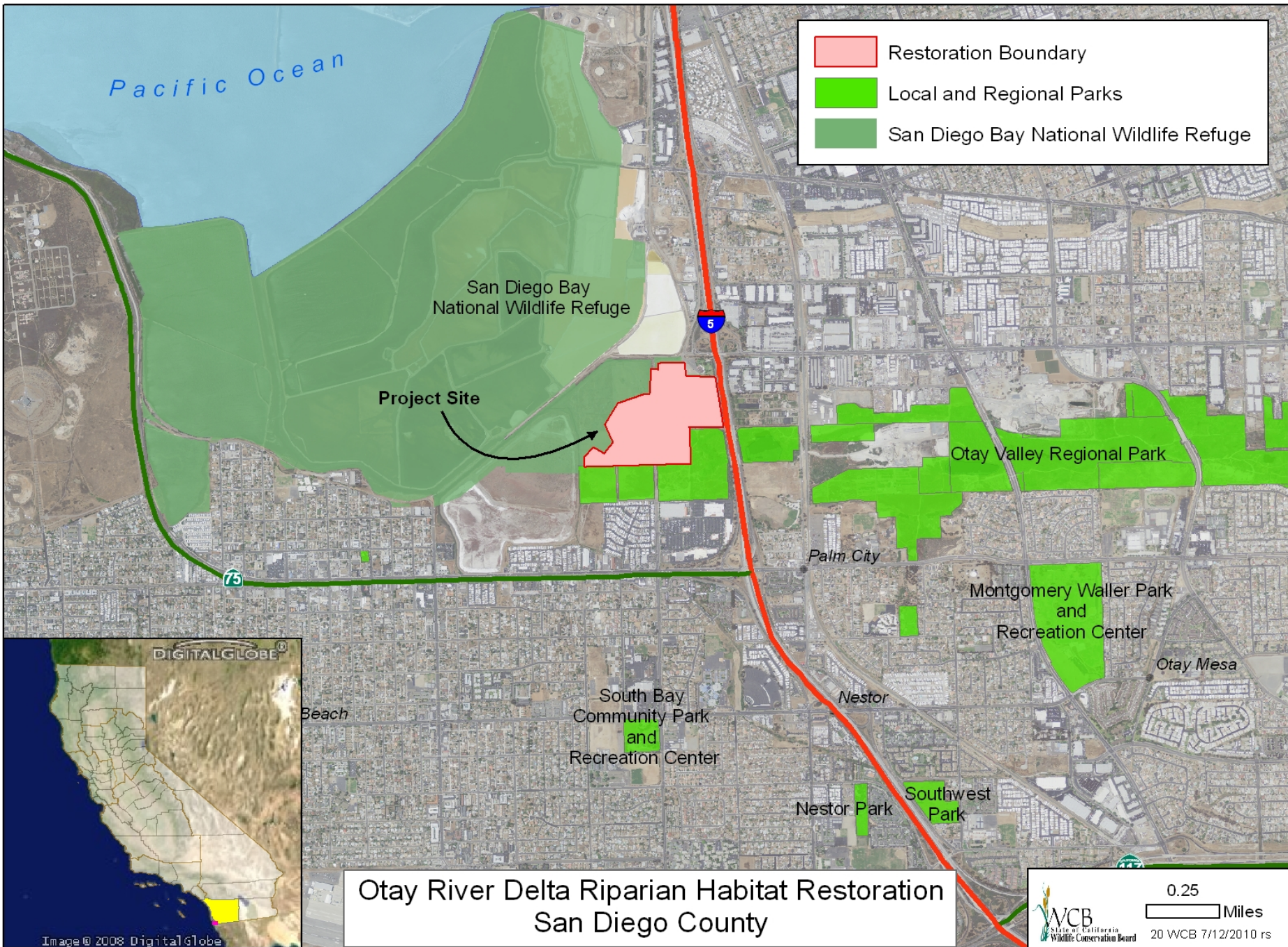


Looking south at Vail Lake.

19 Vail Lake Riverside County

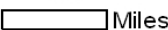


Looking south at the Cleveland National Forest .



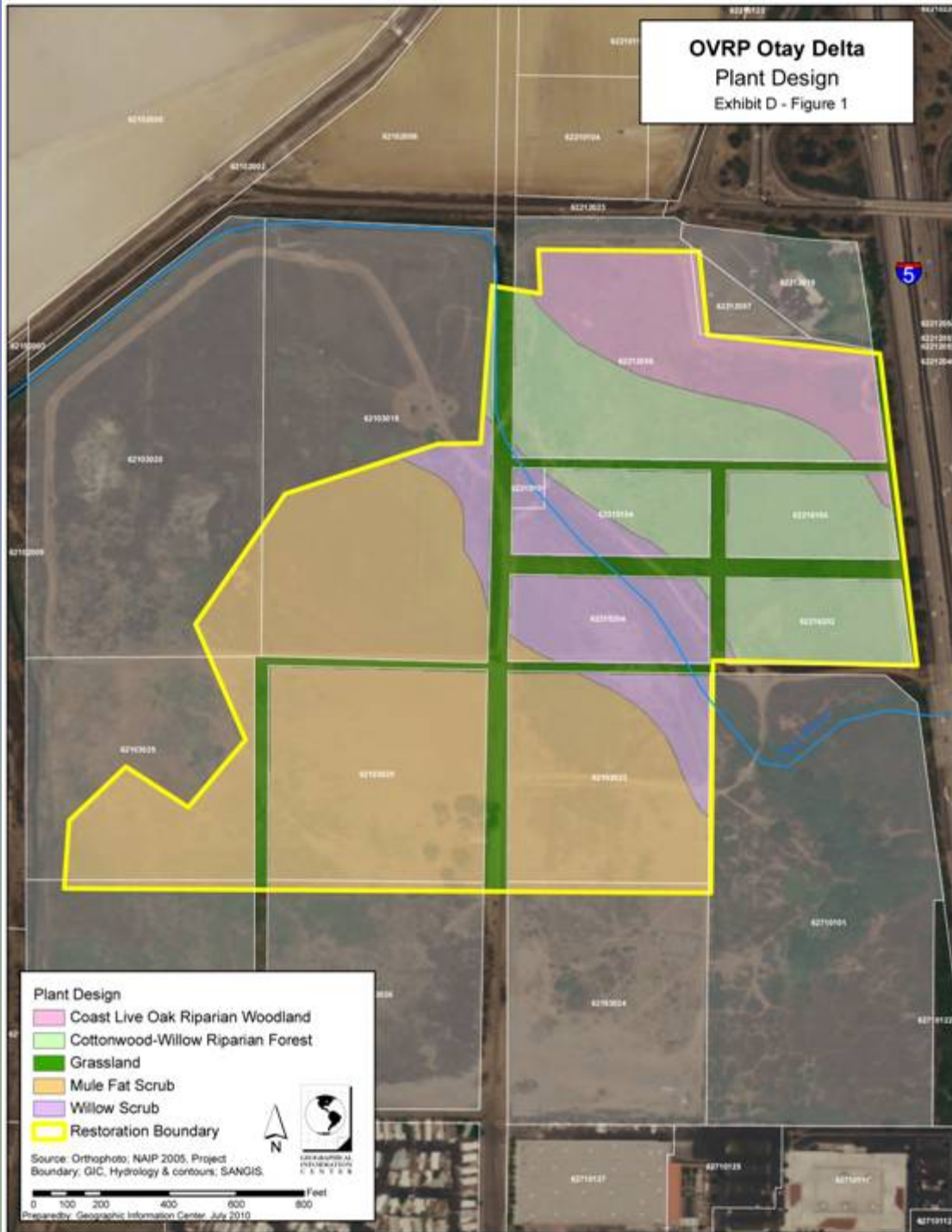
- Restoration Boundary
- Local and Regional Parks
- San Diego Bay National Wildlife Refuge

Otay River Delta Riparian Habitat Restoration
San Diego County

0.25
 Miles

 WCB
 State of California
 Wildlife Conservation Board
 20 WCB 7/12/2010 rs



OVRP Otay Delta Plant Design Exhibit D - Figure 1



20 Otay River Delta Riparian Habitat Restoration San Diego County



The existing vegetation on the site is dominated by invasive chrysanthemum.

20 Otay River Delta Riparian Habitat Restoration San Diego County



Note the berm in the background separating the restoration site from the river.

20 Otay River Delta Riparian Habitat Restoration San Diego County



Another view of the site. The willows in the background are lining the river channel.

20 Otay River Delta Riparian Habitat Restoration San Diego County



Least Bell's Vireo nest

21 San Joaquin and Contra Costa Counties Conservation Planning Areas

