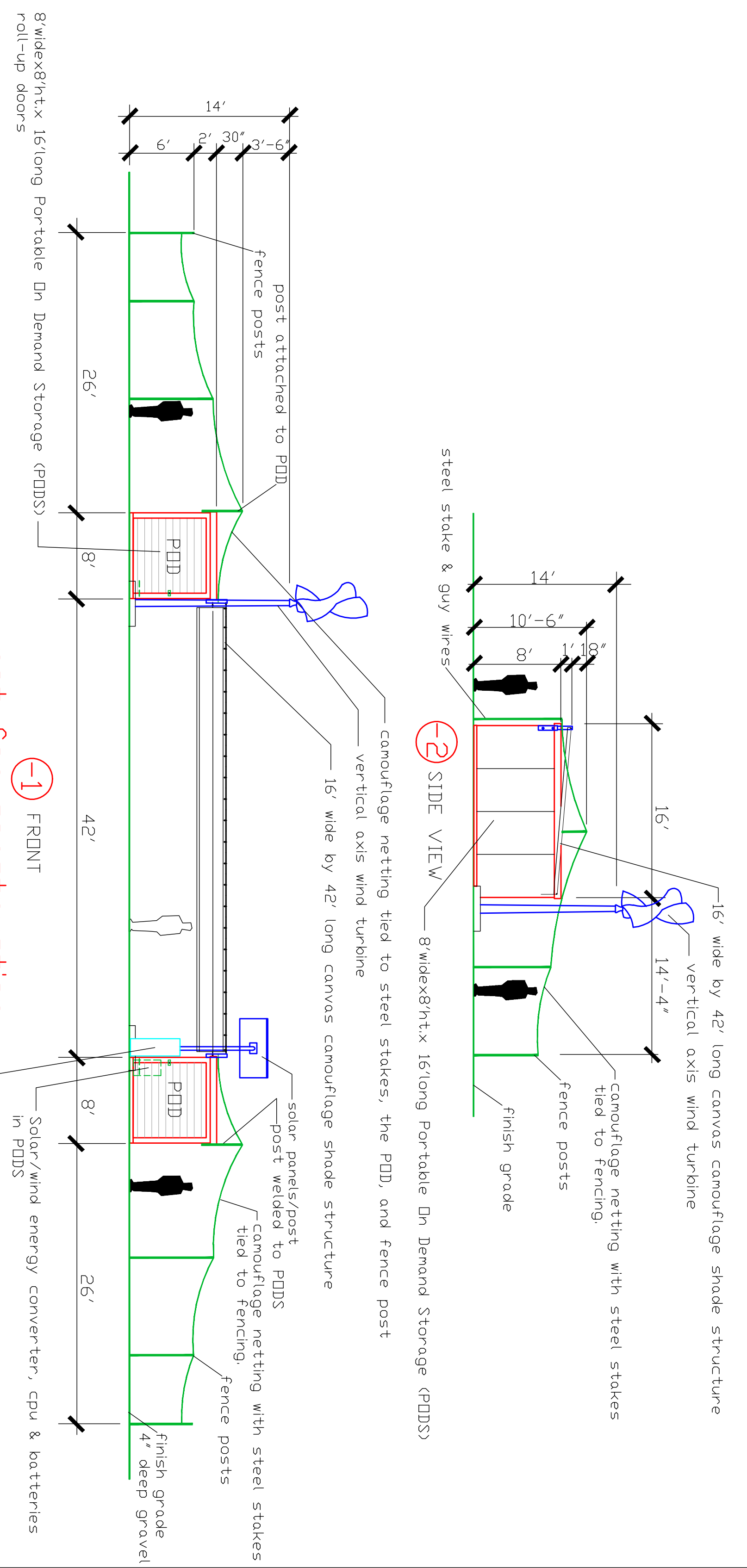


A PLAN VIEW OF "TERRA-PODS" SHADE STRUCTURE
not for construction
1/8" = 1'-0"

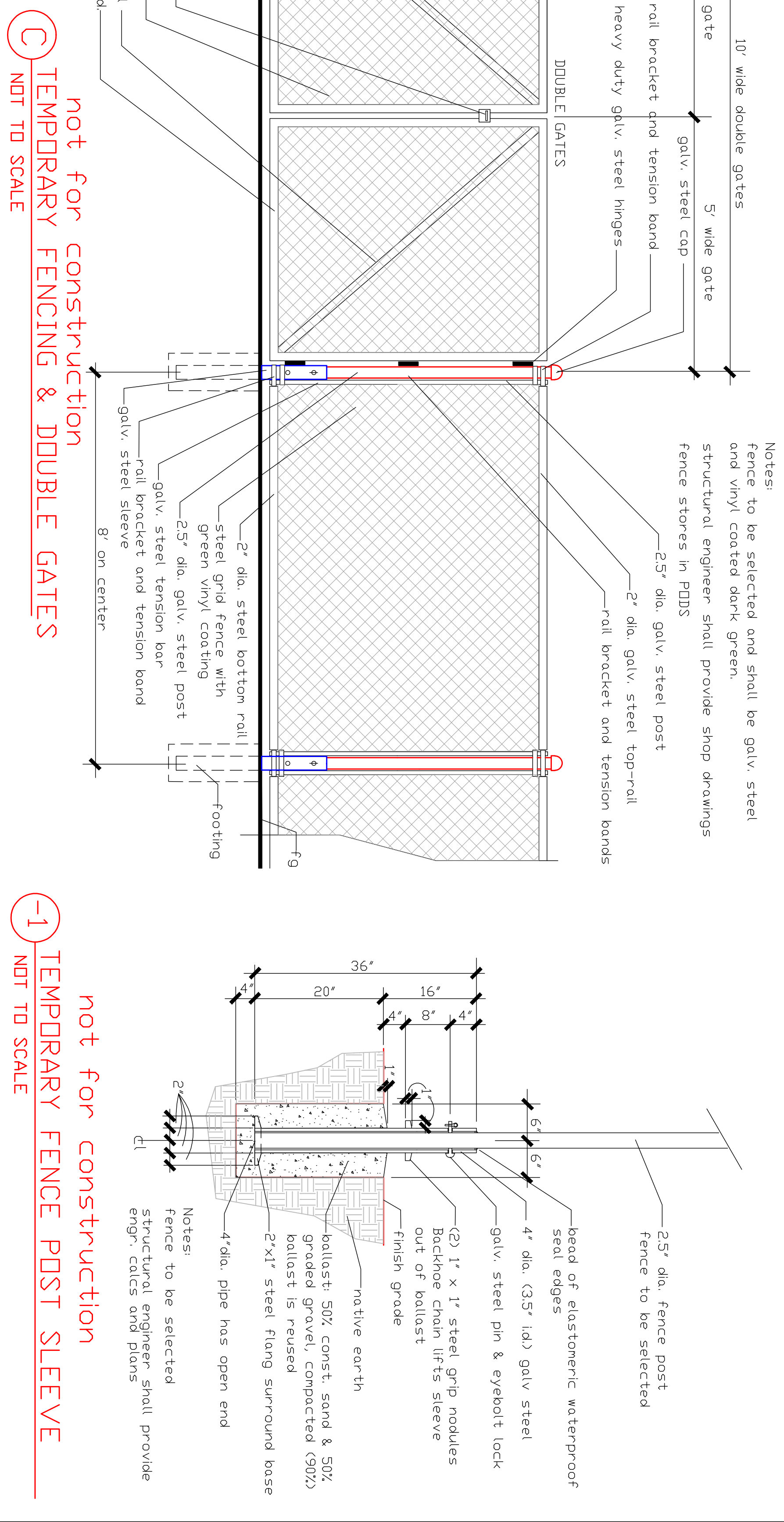


-1 FRONT ELEVATIONS "TERRA-PODS" STORAGE
not for construction
1/8" = 1'-0"



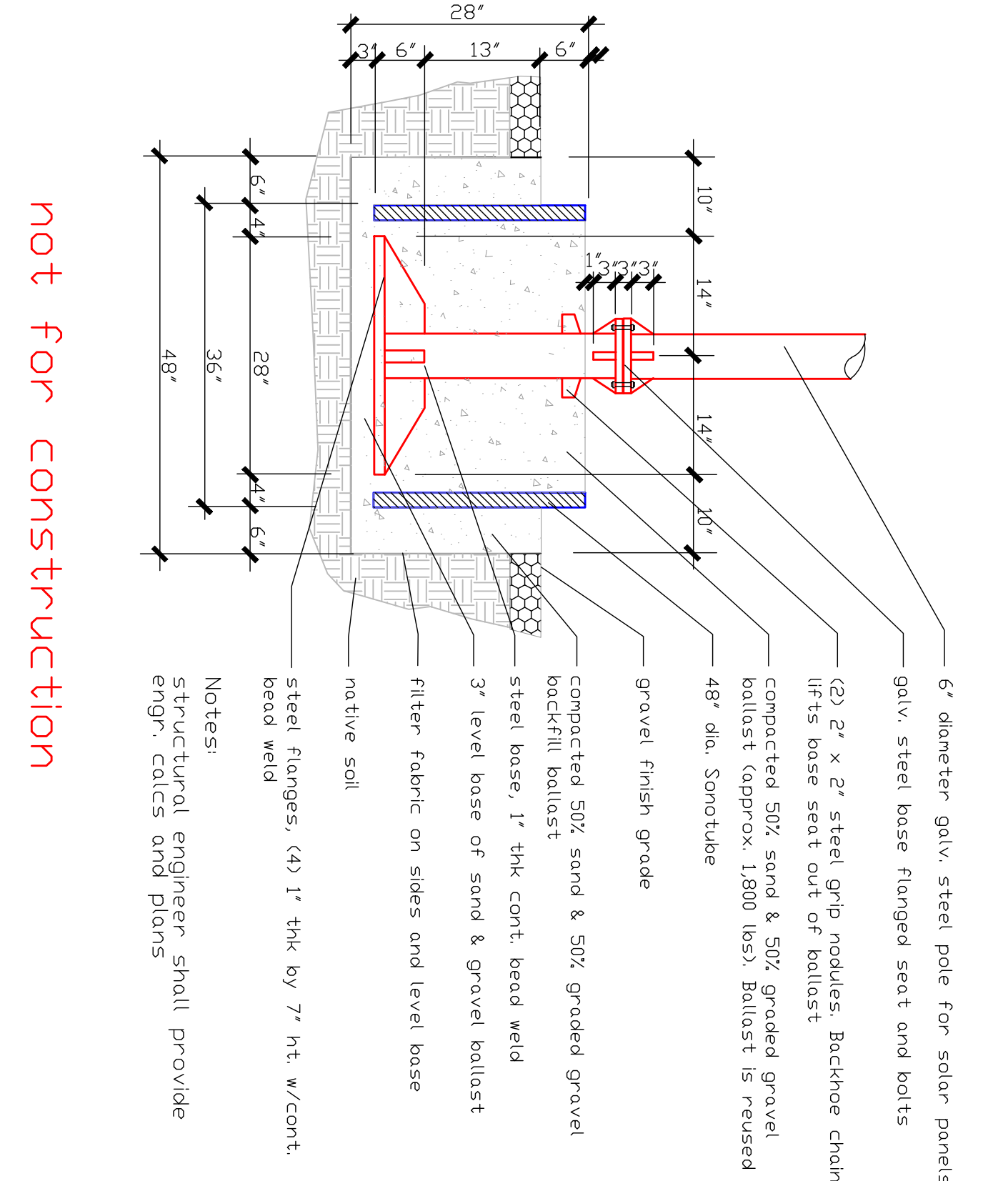
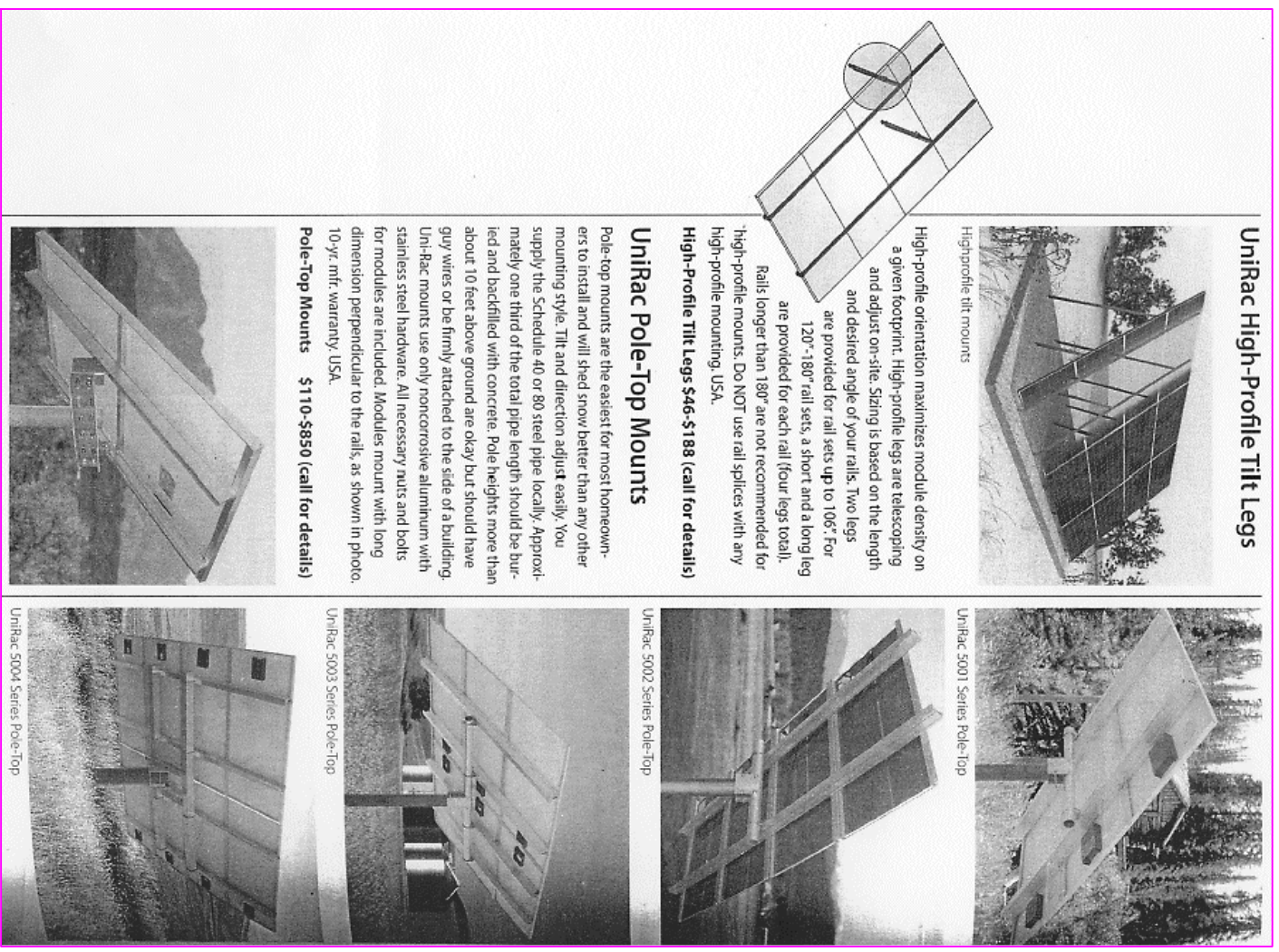
B PORTABLE ON DEMAND STORAGE

-1 PODZILLA LIFT & TRANSPORT SYSTEM



C TEMPORARY FENCING & DOUBLE GATES
not for construction
NOT TO SCALE

-1 TEMPORARY FENCE POST SLEEVE
not for construction
NOT TO SCALE

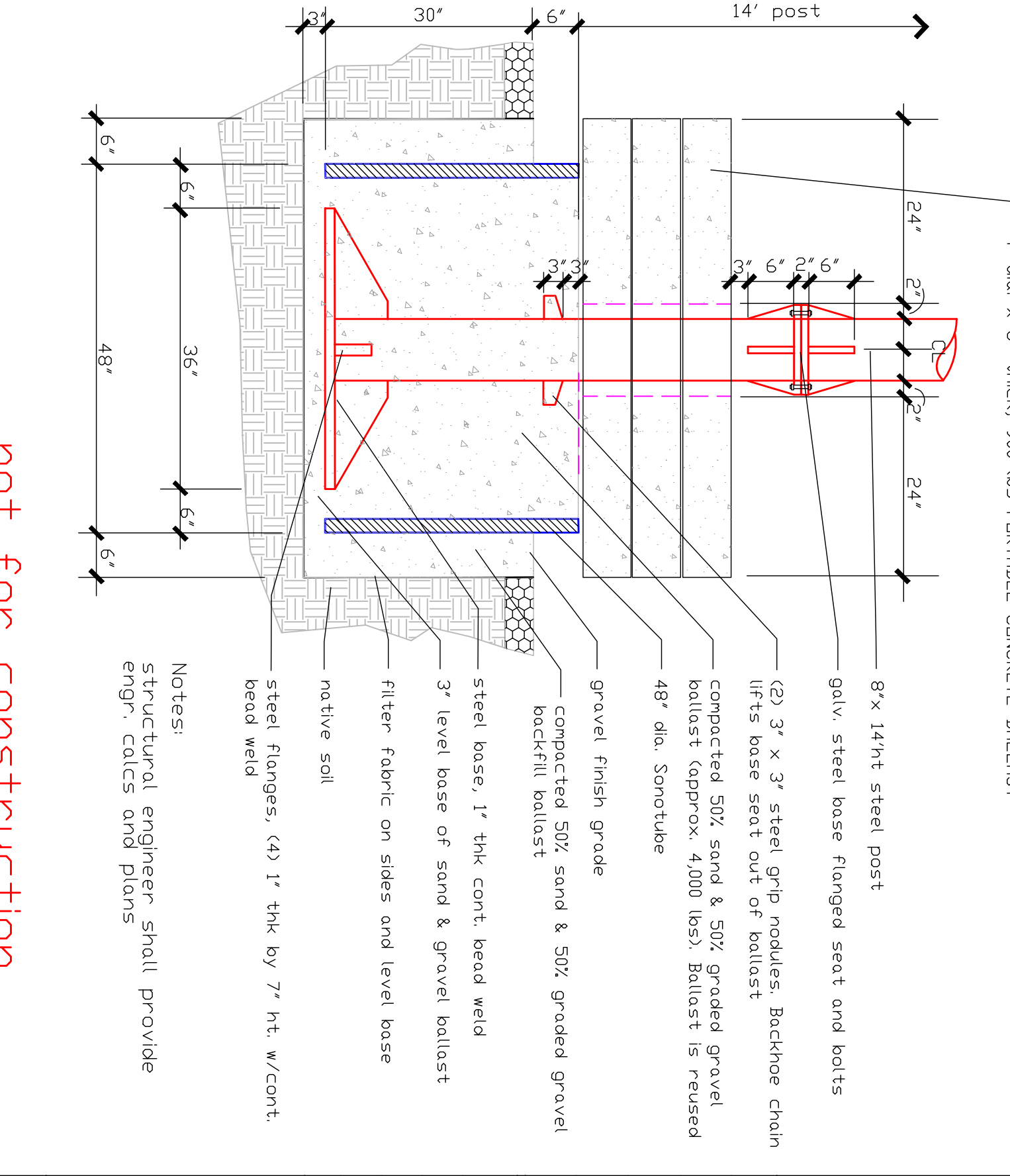


-1 SOLAR PANEL POLE MOUNT & BALLAST
not for construction
NOT TO SCALE

TECHNICAL SPECIFICATIONS

Sample Area: 3.19 sq ft
Riser Dimensions: 4.81 ft x 4 ft x 2.64 in (12 in)
Overall Height: 10.87 (10.3 in)
Riser Construction: Slim Light Aluminum Alloy
Type: Vertical Axis Wind Turbine
Cupola Speed: 1.9 rpm
Banking: No banking needed for normal operation. Manual override for maintenance.
Grid Connection: 110VAC, 240VAC, 50/60Hz, GFI/Trip Inverter
Weight: 310 lb (140 lb)
Design Life: 30 years

Power: recommended 1.5 hp depending on observations
Warranty: 5 year Limited Warranty. Extended warranty options available upon request.
Generator: 3.0 hp light-duty Permanent Magnet Generator
Battery charge system available
Holding pattern pending design
Blade construction: steel construction for any anemometer.
Modular: JD blade for easy assembly and disassembly.
Medical turbine for smooth power production.
Design allows for operation at less than 15 degrees above background noise.
Completely safe for our friends: the birds and bats.
Ultra-secure construction: air-tight, no yaw control equipment.



-1 WIND TURBINE POLE MOUNT & BALLAST
not for construction
NOT TO SCALE

REVISIONS

NO.	DATE	DESCRIPTION
1	4/27/2010	ISSUED FOR PERMIT

DRAWN: G.S.
CHECKED: G.S.
DATE: 4/27/2010
SCALE: NOTED
JOB #

CONSTRUCTION DETAILS
(not for construction)

COMMUNITY PROMOTED RESTORATION, CPR FOR THE MESA
CALIFORNIA DEPARTMENT OF FISH and GAME
SOUTH COAST REGION PROJECT PLAN EVALUATION
BOLSA CHICA LAND TRUST
HUNTINGTON BEACH, CALIFORNIA

Stivers & Associates
Environmental Planners
Landscape Architects
Urban Forestry
160 Centennial Way
Suite 3
Tustin, CA 92680
(714) 838-9811
FAX (714) 838-0727
CA Lic. #2708