



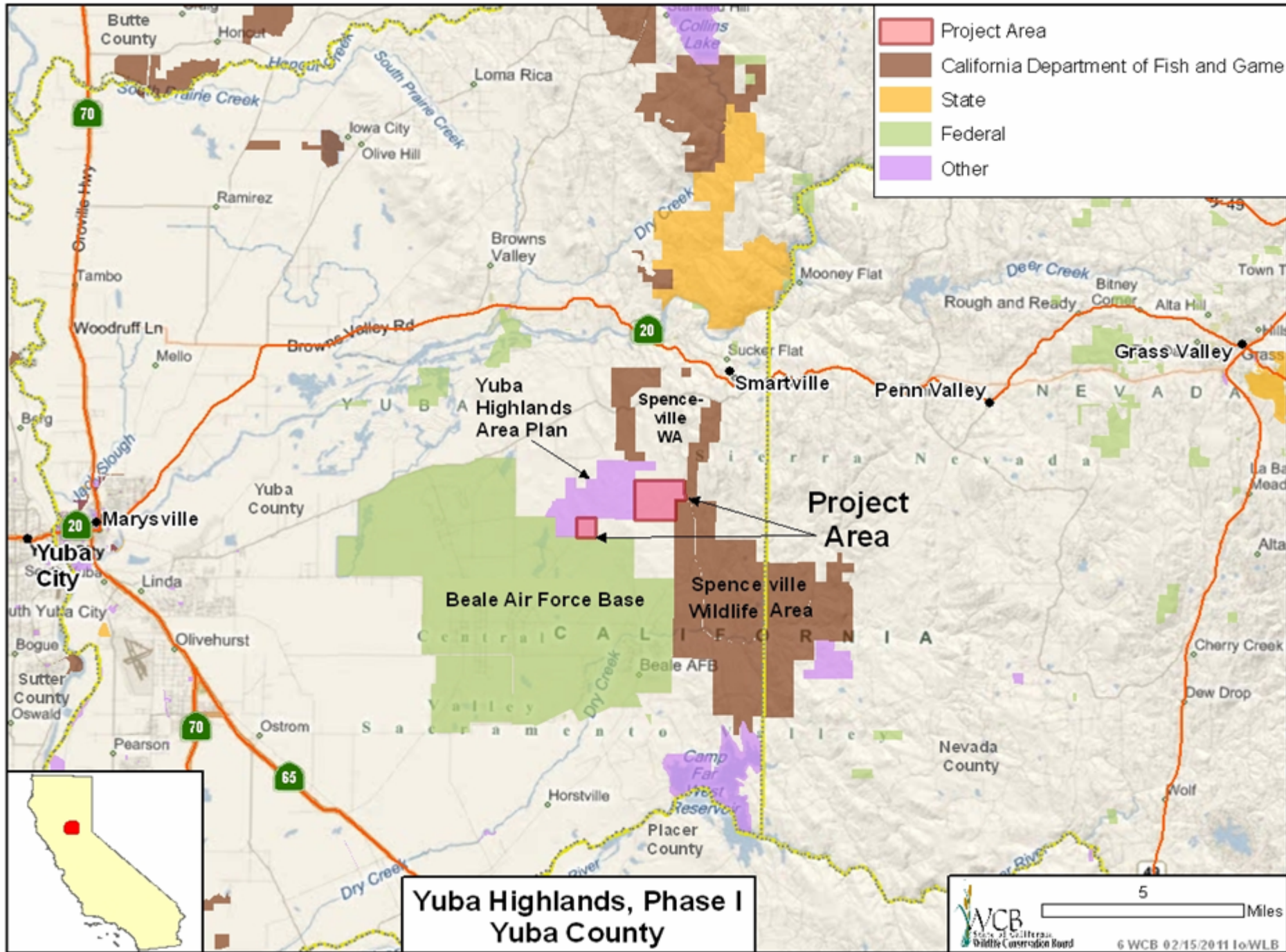
February 24, 2011, Wildlife Conservation Board
Meeting

10:00 AM, State Capitol, Room 112

Sacramento, California 95814

Carrizo Plains, San Luis Obispo County

Photo by Rob Floerke



#6. Yuba Highlands, Phase I
Yuba County



- View of site used for cattle grazing

#6. Yuba Highlands, Phase I
Yuba County



■ View of rolling scenic grasslands

#6. Yuba Highlands, Phase I,
Yuba County



- View of scenic grasslands and oak tree on site

#6. Yuba Highlands, Phase I
Yuba County



- Panoramic view of property

#7. San Joaquin Multi-Species Conservation Plan (2007) – Barron
Contra Costa County



- Looking down on the Barron property from Krieger Peak

#7. San Joaquin Multi-Species Conservation Plan (2007) – Barron
Contra Costa County




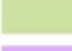



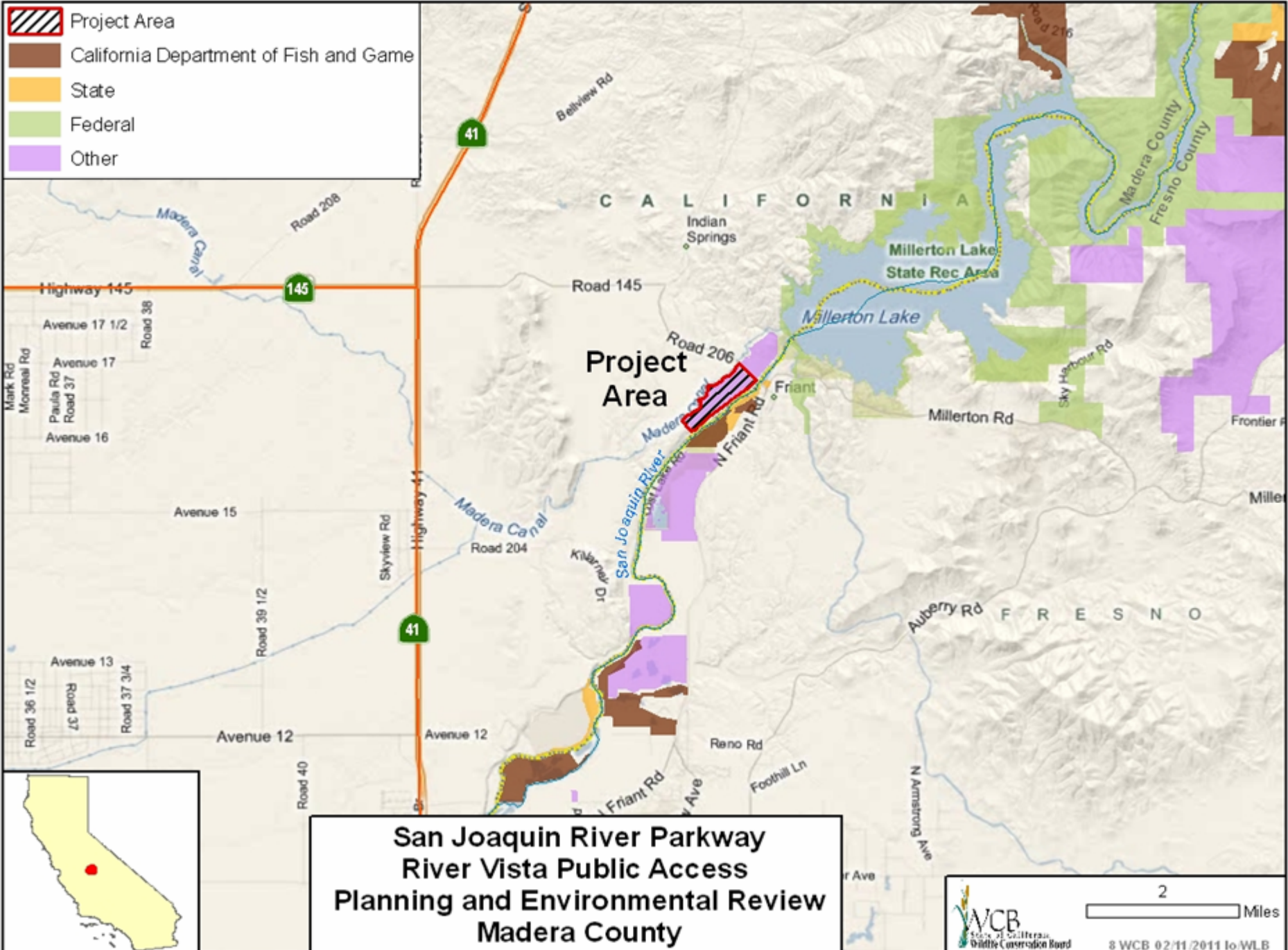
- Oak trees found on Barron Property

#7. San Joaquin Multi-Species Conservation Plan (2007) – Barron
Contra Costa County



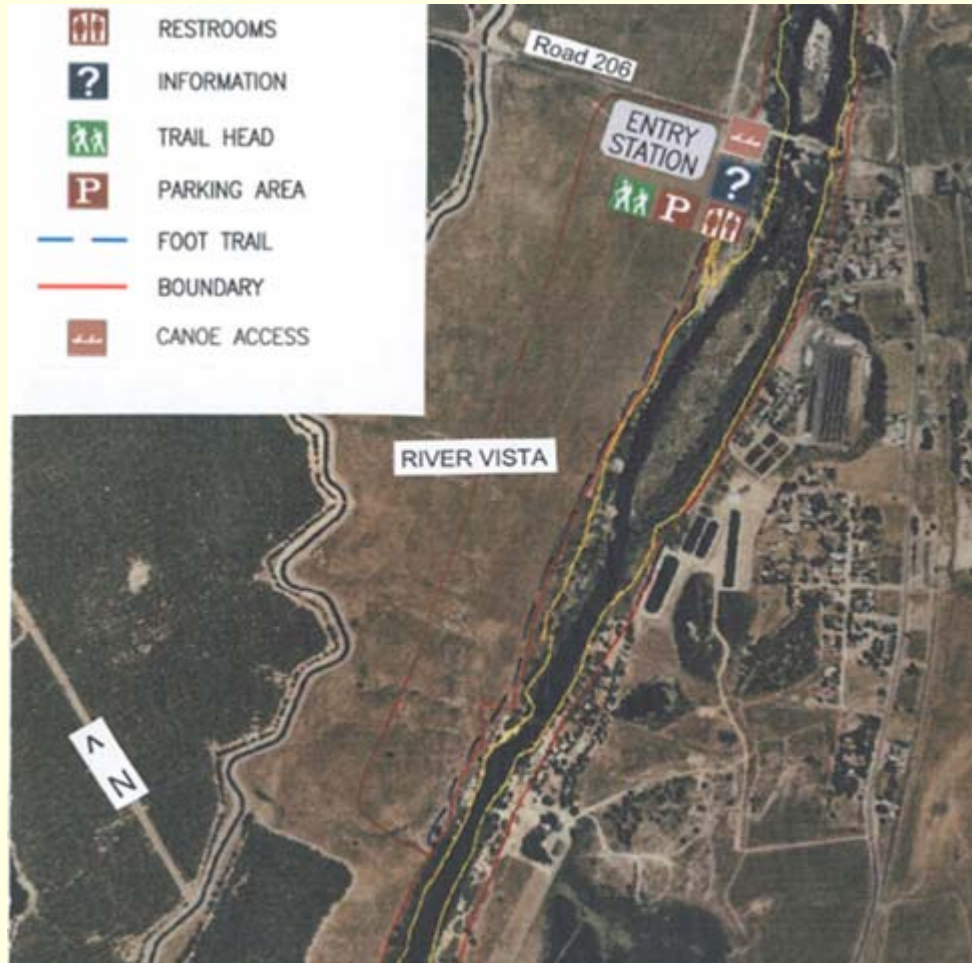
■ Looking south at the Barron Property

-  Project Area
-  California Department of Fish and Game
-  State
-  Federal
-  Other



**San Joaquin River Parkway
River Vista Public Access
Planning and Environmental Review
Madera County**

#8. SJR Parkway, River Vista Public Access Planning & Environmental Review Madera County



- Overview of the proposed project

#8. SJR Parkway, River Vista Public Access Planning &
Environmental Review
Madera County



- San Joaquin River from the banks of the River Vista property

#8. SJR Parkway, River Vista Public Access Planning & Environmental Review
Madera County



- Native American grinding rock along the San Joaquin River

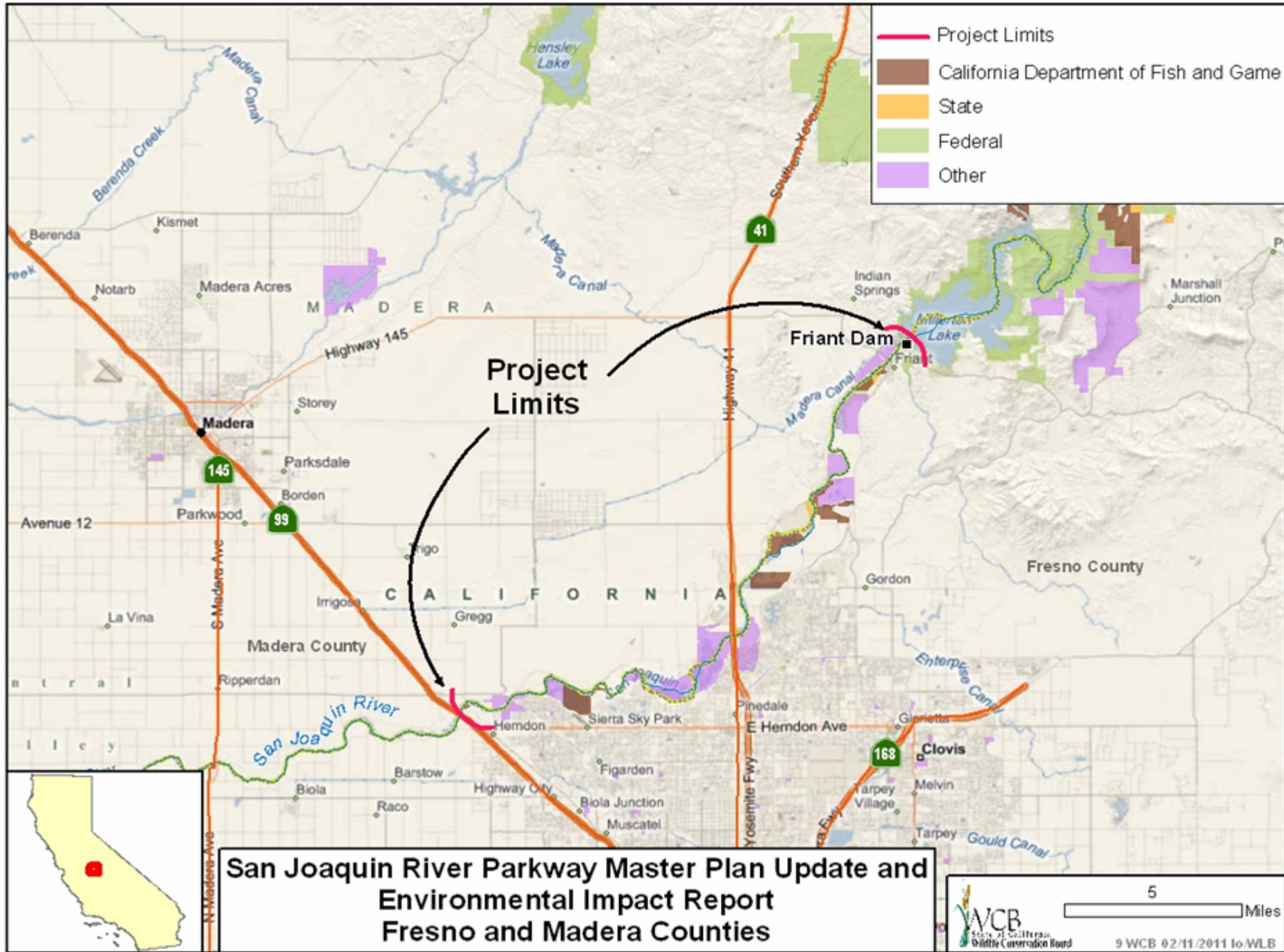
#8. SJR Parkway, River Vista Public Access Planning & Environmental Review
Madera County



- Existing access road with view of Friant Dam

#8. SJR Parkway, River Vista Public Access Planning &
Environmental Review
Madera County





#9. San Joaquin River Parkway Master Plan Update and EIR
Madera and Fresno Counties



■ View across Parkway

#9. San Joaquin River Parkway Master Plan Update and EIR
Madera and Fresno Counties



■ Friant Cove Public Access

#9. San Joaquin River Parkway Master Plan Update and EIR
Madera and Fresno Counties



■ Eaton Trail

#9. San Joaquin River Parkway Master Plan Update and EIR
Madera and Fresno Counties



■ Wildwood Native Park

#9. San Joaquin River Parkway Master Plan Update and EIR
Madera and Fresno Counties



#9. San Joaquin River Parkway Master Plan Update and EIR
Madera and Fresno Counties


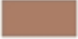





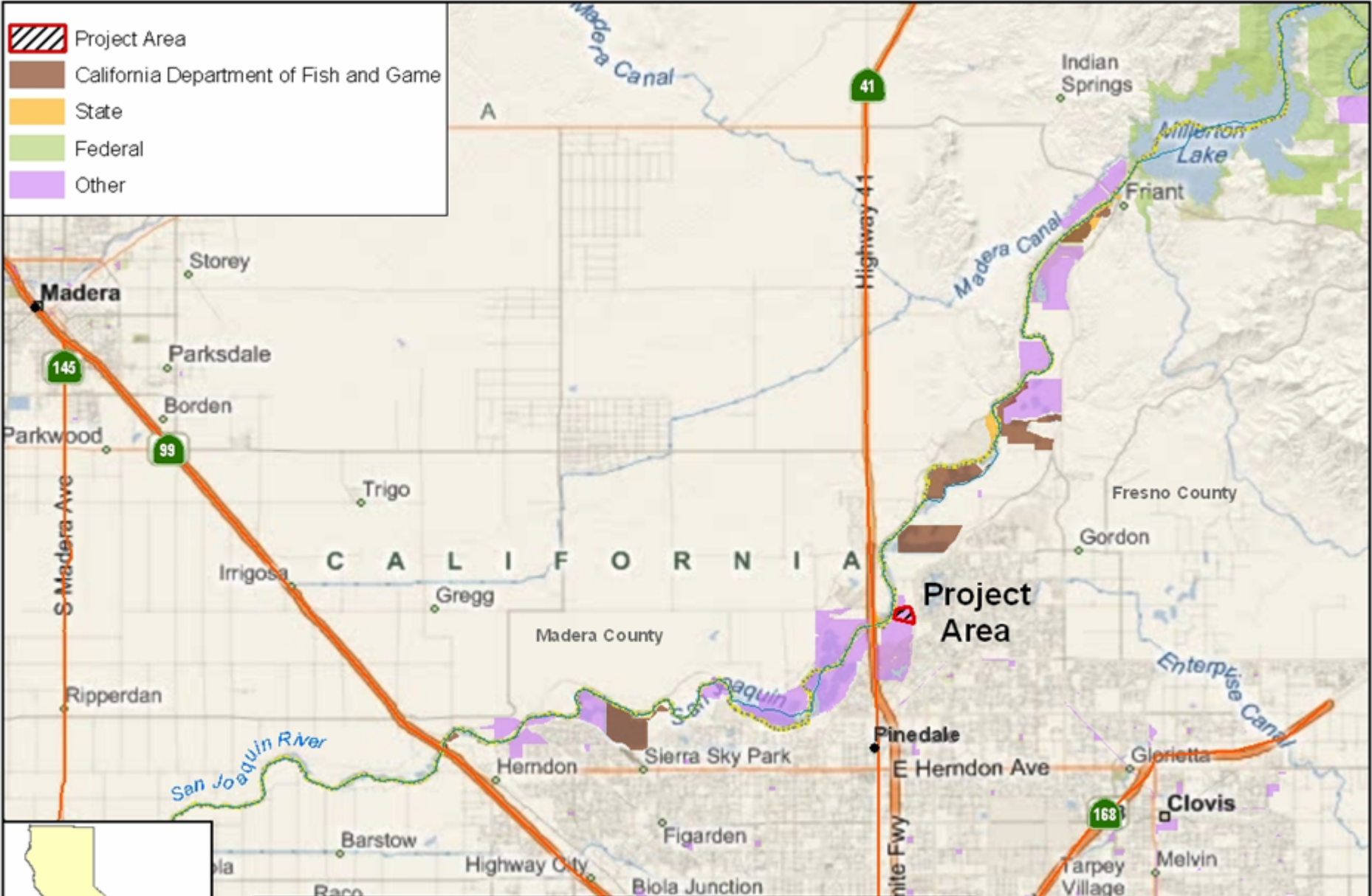
■ Canoeing at Friant Cove

#9. San Joaquin River Parkway Master Plan Update and EIR
Madera and Fresno Counties



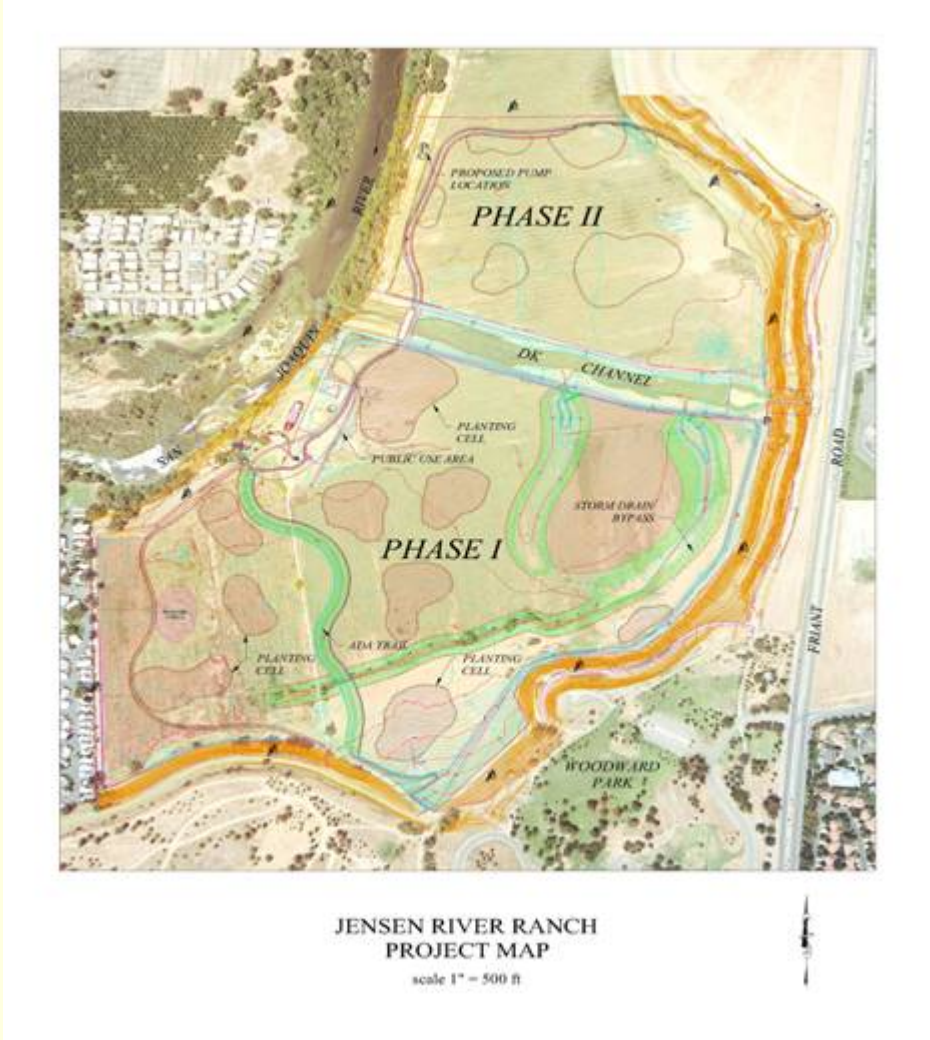
■ River Camp along the San Joaquin River

-  Project Area
-  California Department of Fish and Game
-  State
-  Federal
-  Other



**San Joaquin River Parkway
Jensen River Ranch Phase II Habitat Restoration
Fresno County**

#10. San Joaquin River Parkway, Jensen River Ranch Phase II Habitat Restoration Planting
Fresno County



#10. San Joaquin River Parkway, Jensen River Ranch Phase II Habitat Restoration Planting
Fresno County



■ Phase I Habitat Enhancement

#10. San Joaquin River Parkway, Jensen River Ranch Phase II Habitat Restoration Planting
Fresno County

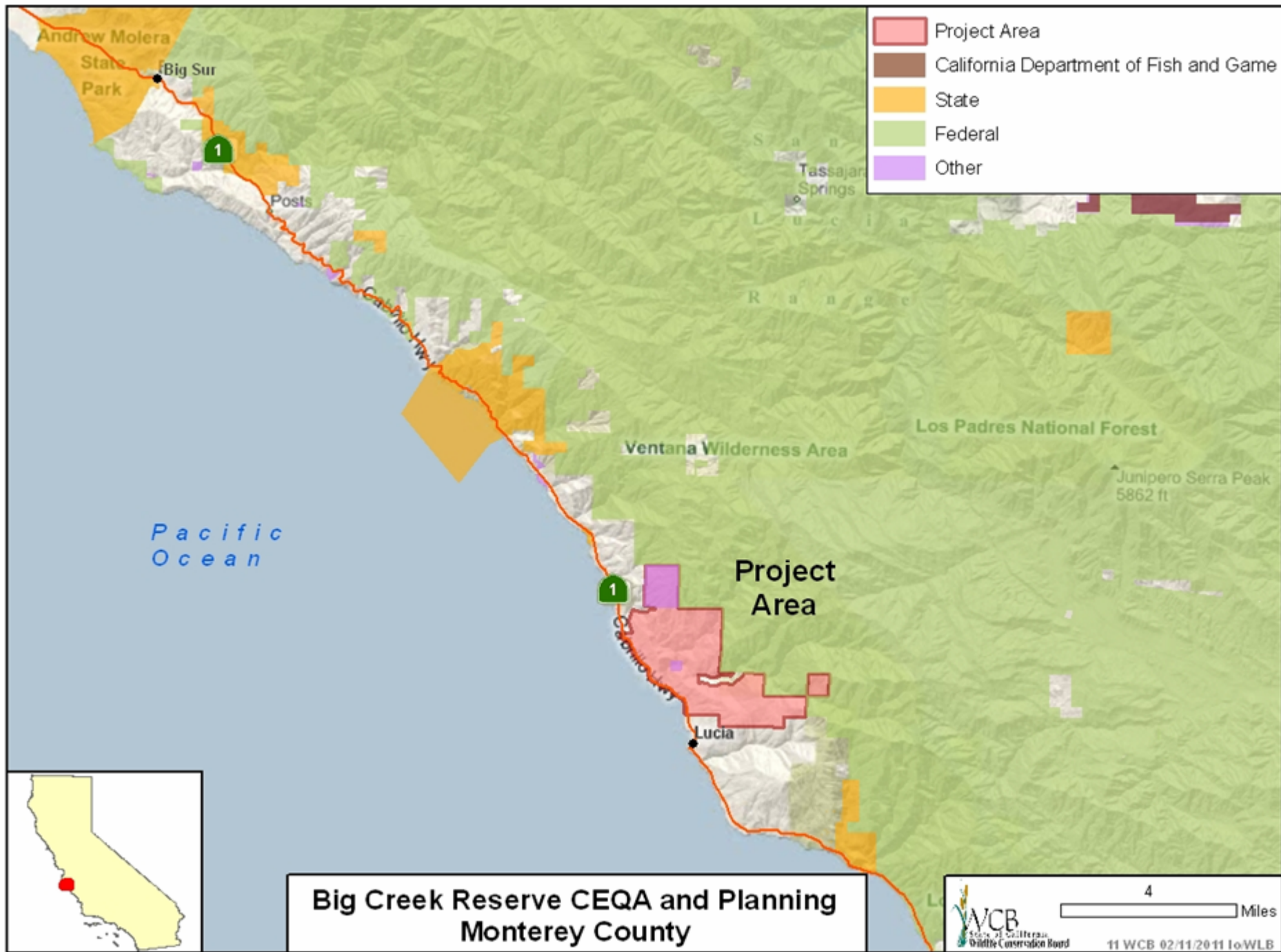


■ Phase I Created Wetlands

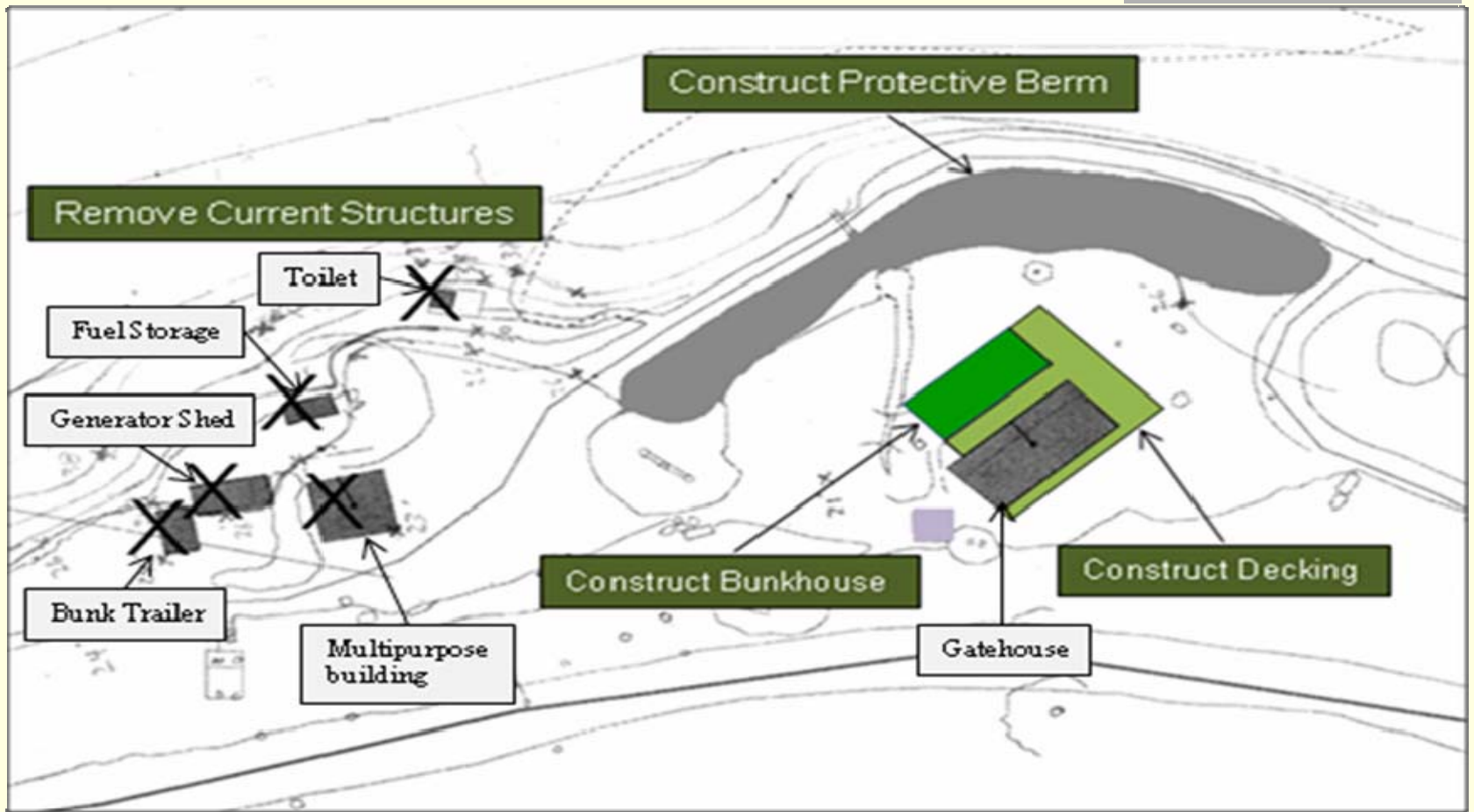
#10. San Joaquin River Parkway, Jensen River Ranch Phase II Habitat Restoration Planting
Fresno County



■ Phase II Site with Water Retention Channel in lower left



#11. Big Creek Reserve CEQA & Planning Monterey County



- Long term goals of the Big Creek Reserve which this planning, design, and CEQA project will address

#11. Big Creek Reserve CEQA & Planning
Monterey County



- Gatehouse cabin situated behind the protective berm

#11. Big Creek Reserve CEQA & Planning Monterey County



- Top Picture: Coyote Creek site looking from afar. Bottom Picture: Close up view of the potential building site at Coyote Creek. This project will address the planning, design, and CEQA requirements

#12. DFG Land Management Plans, Central Coast Region, Phase II
Augmentation
San Luis Obispo County



- Habitats on the Carrizo Plains Wildlife Area include coastal sage scrub and oak woodlands (Photo by Ken Hickman)

#12. DFG Land Management Plans, Central Coast Region, Phase II
Augmentation
San Luis Obispo County



- Permanent lakes are located on the property (Photo by Photo by Ken Hickman)

#12. DFG Land Management Plans, Central Coast Region, Phase II
Augmentation
San Luis Obispo County



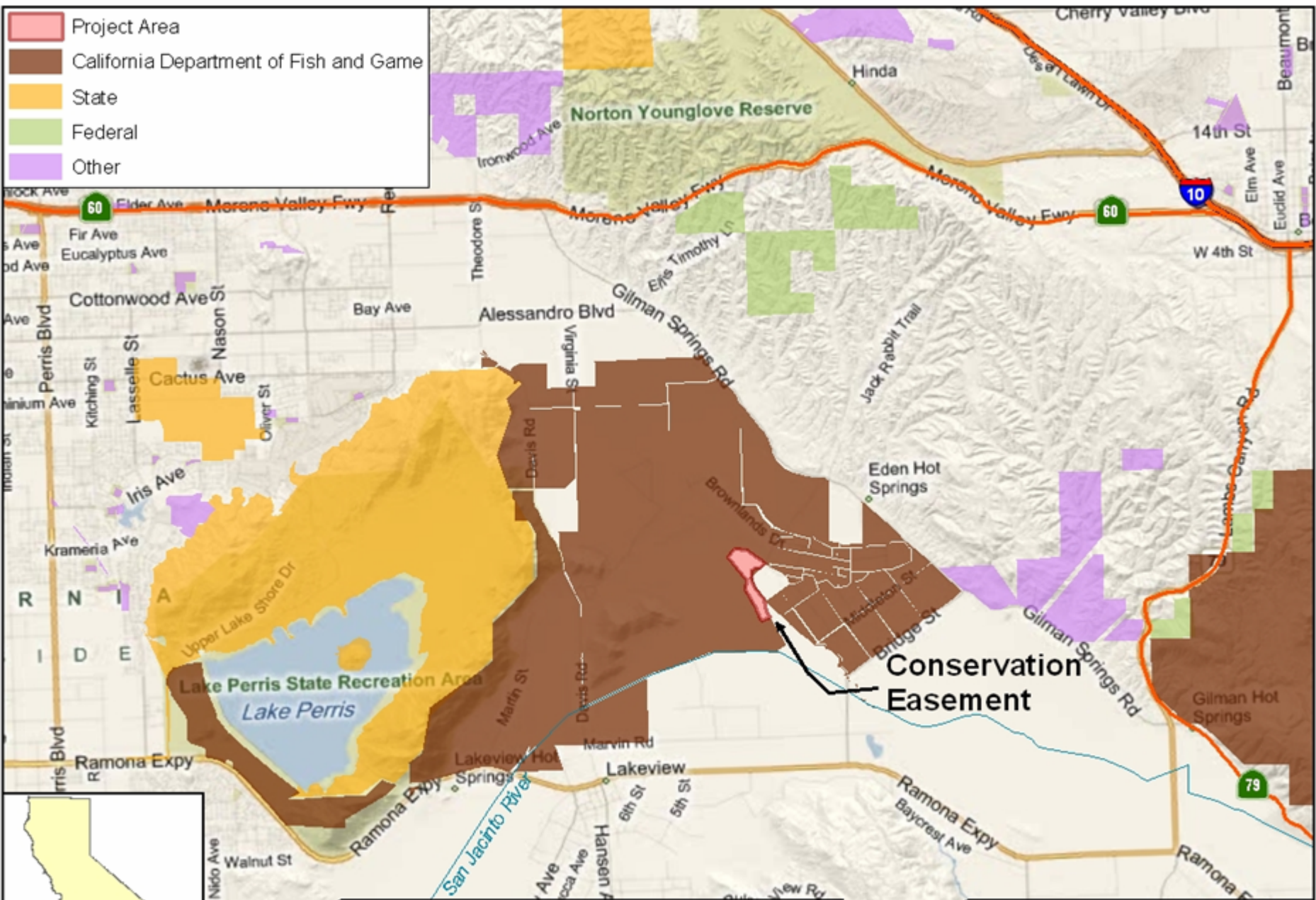
- Carrizo Plains wildflower displays can be spectacular (Photo by Rob Floerke)

#12. DFG Land Management Plans, Central Coast Region, Phase II
Augmentation
San Luis Obispo County



- Research and wildflower and wildlife viewing for the public are common activities on the wildlife area (Photo by John Roser)

- Project Area
- California Department of Fish and Game
- State
- Federal
- Other



**Ramona Conservation Easement
Riverside County**

#13. Ramona Conservation Easement,
Riverside County



■ View of easement area looking southeast

#13. Ramona Conservation Easement,
Riverside County



■ View of easement area in distance looking northeast

#13. Ramona Conservation Easement,
Riverside County

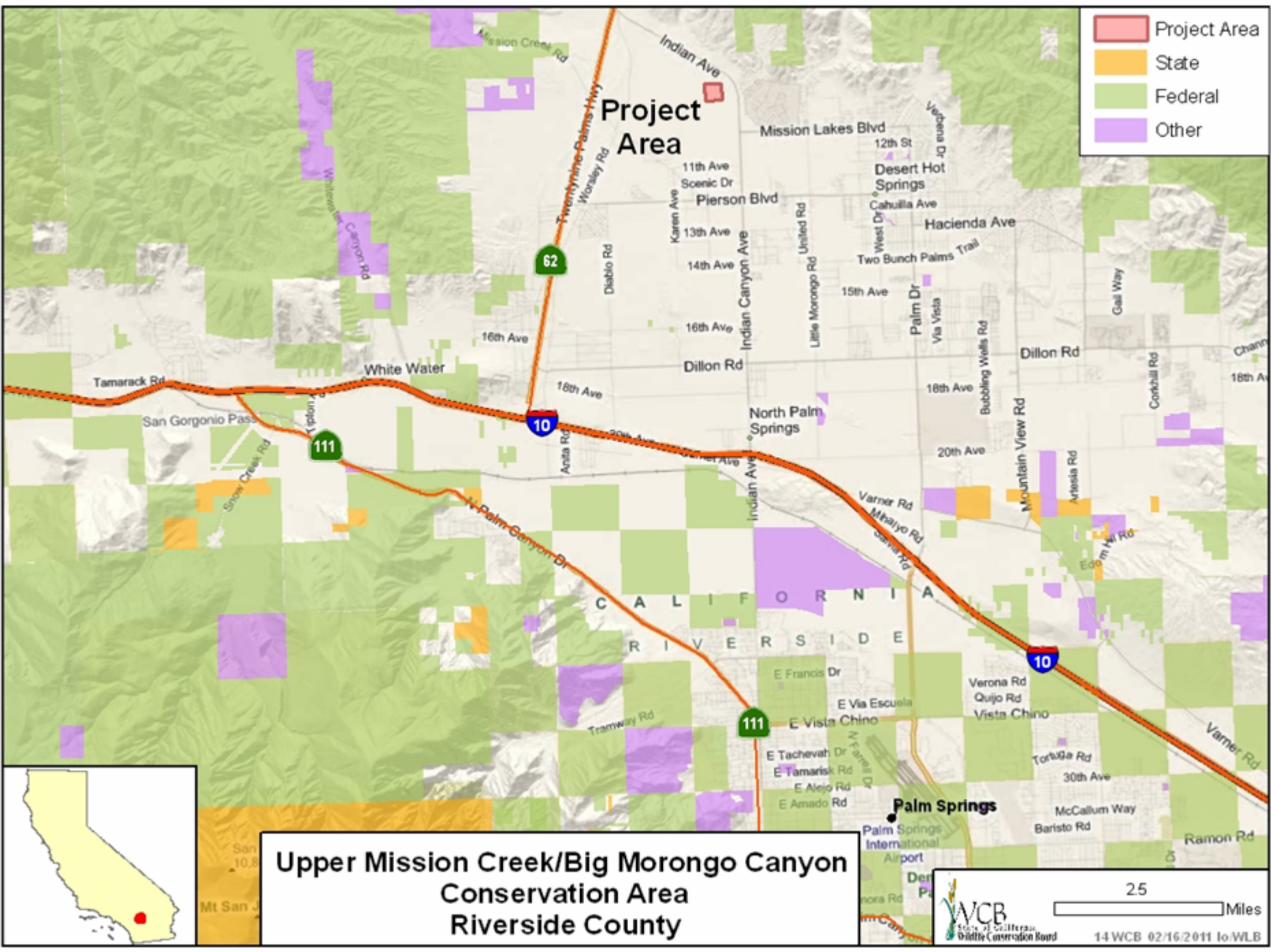


■ View of easement area looking southeast

#13. Ramona Conservation Easement,
Riverside County



- View of Conditional Use Area in foreground looking north; easement area in distance



Project Area

Upper Mission Creek/Big Morongo Canyon Conservation Area
Riverside County

25 Miles

WCB
 Southern California
 Wildlife Conservation Board

14WCB 02/16/2011 to-WLB

#14. Upper Mission Creek / Big Morongo Canyon Conservation Area
Riverside County



■ Looking east

#14. Upper Mission Creek / Big Morongo Canyon Conservation Area
Riverside County



■ Looking south toward Highway 10

#14. Upper Mission Creek / Big Morongo Canyon Conservation Area
Riverside County



- Looking north towards Highway 10 and the blowsand habitat

#15. Western Riverside County MSHCP (2006), Expansion 5
Riverside County



■ Southerly View of Wilhelm Property

#15. Western Riverside County MSHCP (2006), Expansion 5
Riverside County



■ Northeasterly View of Wilhelm Property

#15. Western Riverside County MSHCP (2006), Expansion 5
Riverside County

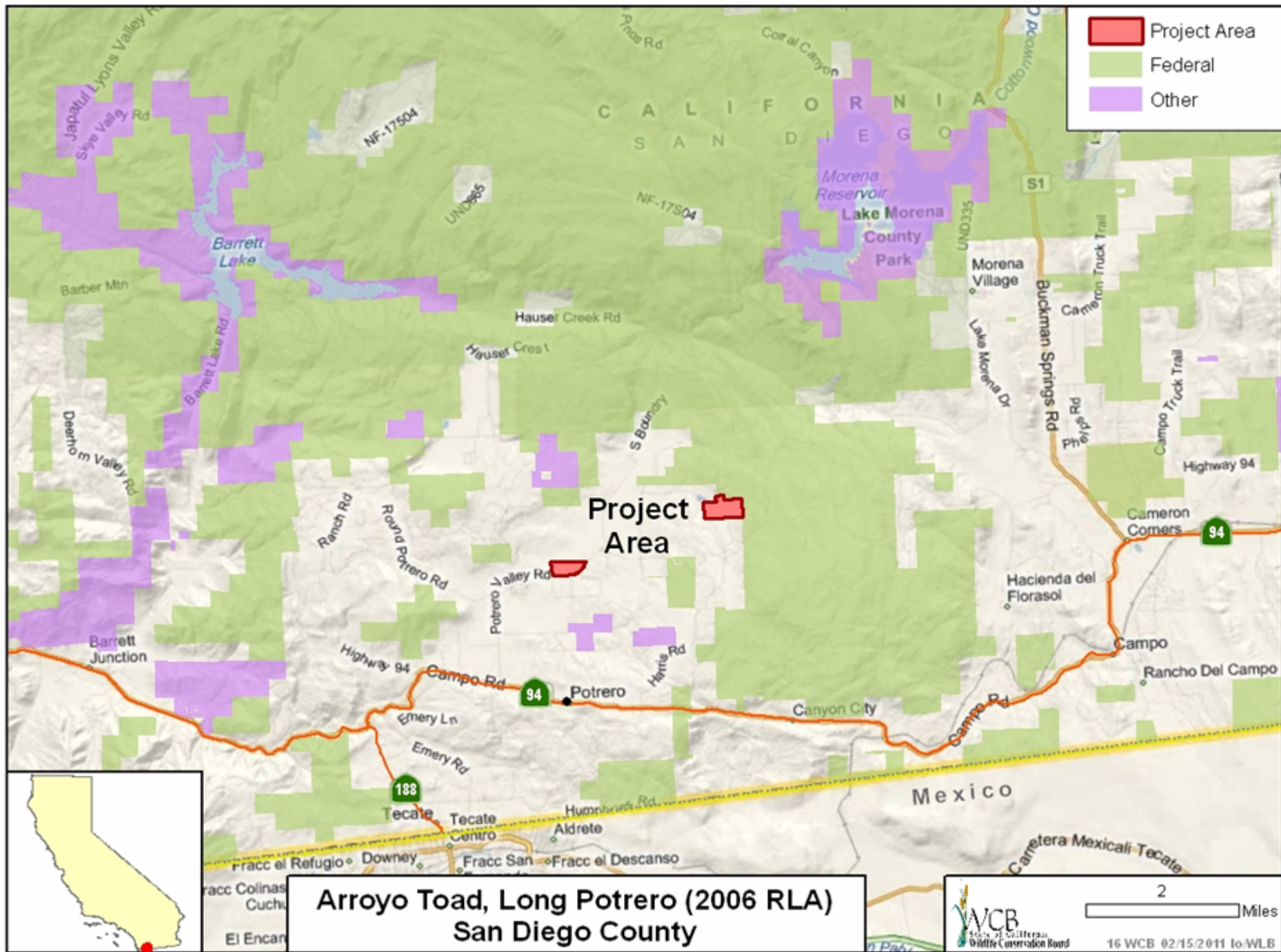


■ Westerly View of Wilhelm Property

#15. Western Riverside County MSHCP (2006), Expansion 5
Riverside County



■ Easterly View of Wilhelm Property



#16. Arroyo Toad, Long Potrero (2006 RLA)
San Diego County



■ Male Quino Checkerspot butterfly

#16. Arroyo Toad, Long Potrero (2006 RLA)
San Diego County



- Chaparral found on property

#16. Arroyo Toad, Long Potrero (2006 RLA)
San Diego County

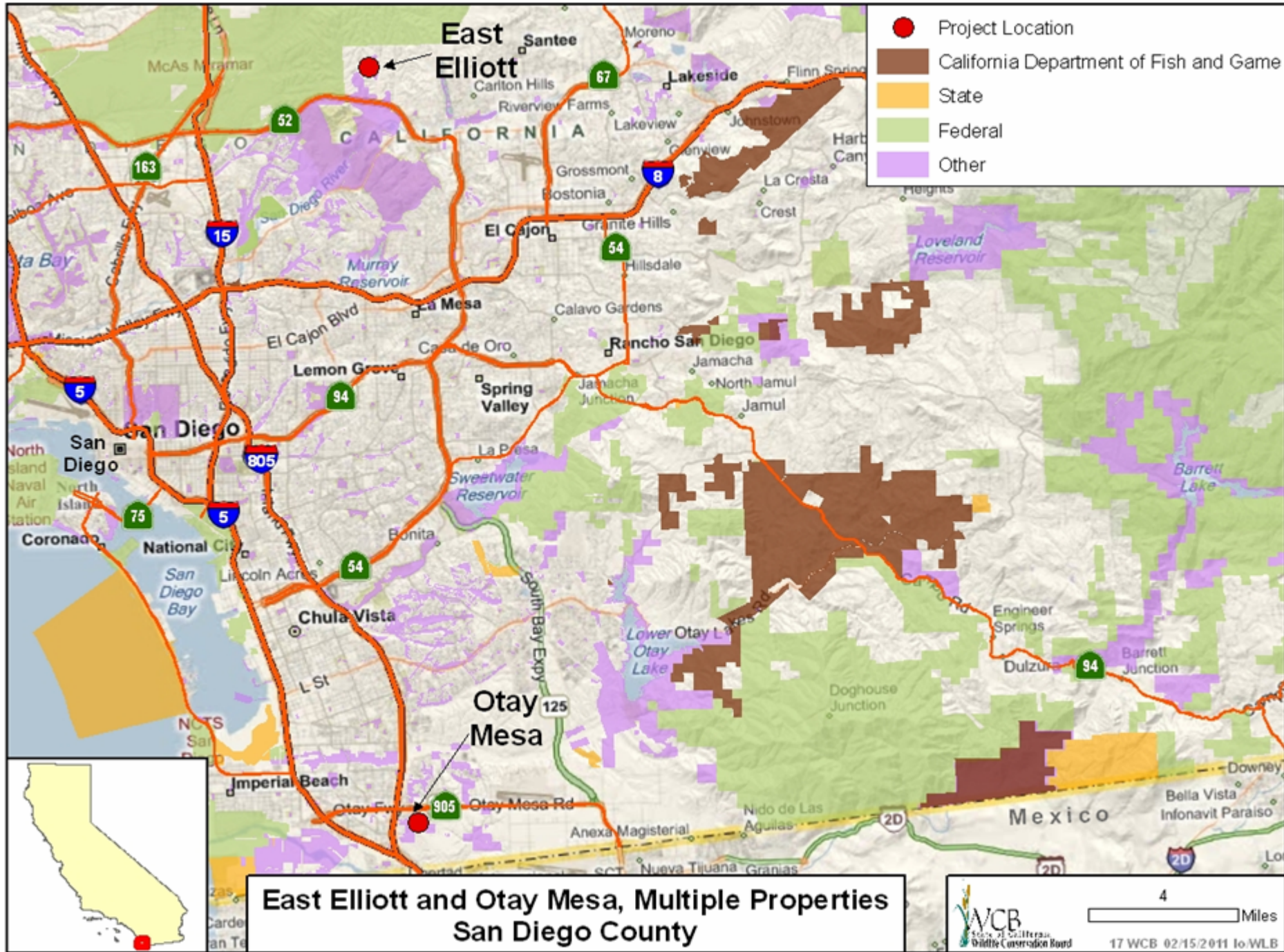


- Oaks and springtime surface water on property

#16. Arroyo Toad, Long Potrero (2006 RLA)
San Diego County



- Oaks and springtime surface water on property



**East Elliott and Otay Mesa, Multiple Properties
San Diego County**

#17. East Elliot and Otay Mesa, Multiple Properties
San Diego County



- Typical vegetation found on East Elliott properties

#17. East Elliot and Otay Mesa, Multiple Properties
San Diego County



- Typical vegetation found on East Elliott properties

#17. East Elliot and Otay Mesa, Multiple Properties
San Diego County



- Typical view of property when vernal pools are dry

#17. East Elliot and Otay Mesa, Multiple Properties
San Diego County



- Otay tarplant flower found on property in springtime

#18. Jacumba Peak
San Diego County

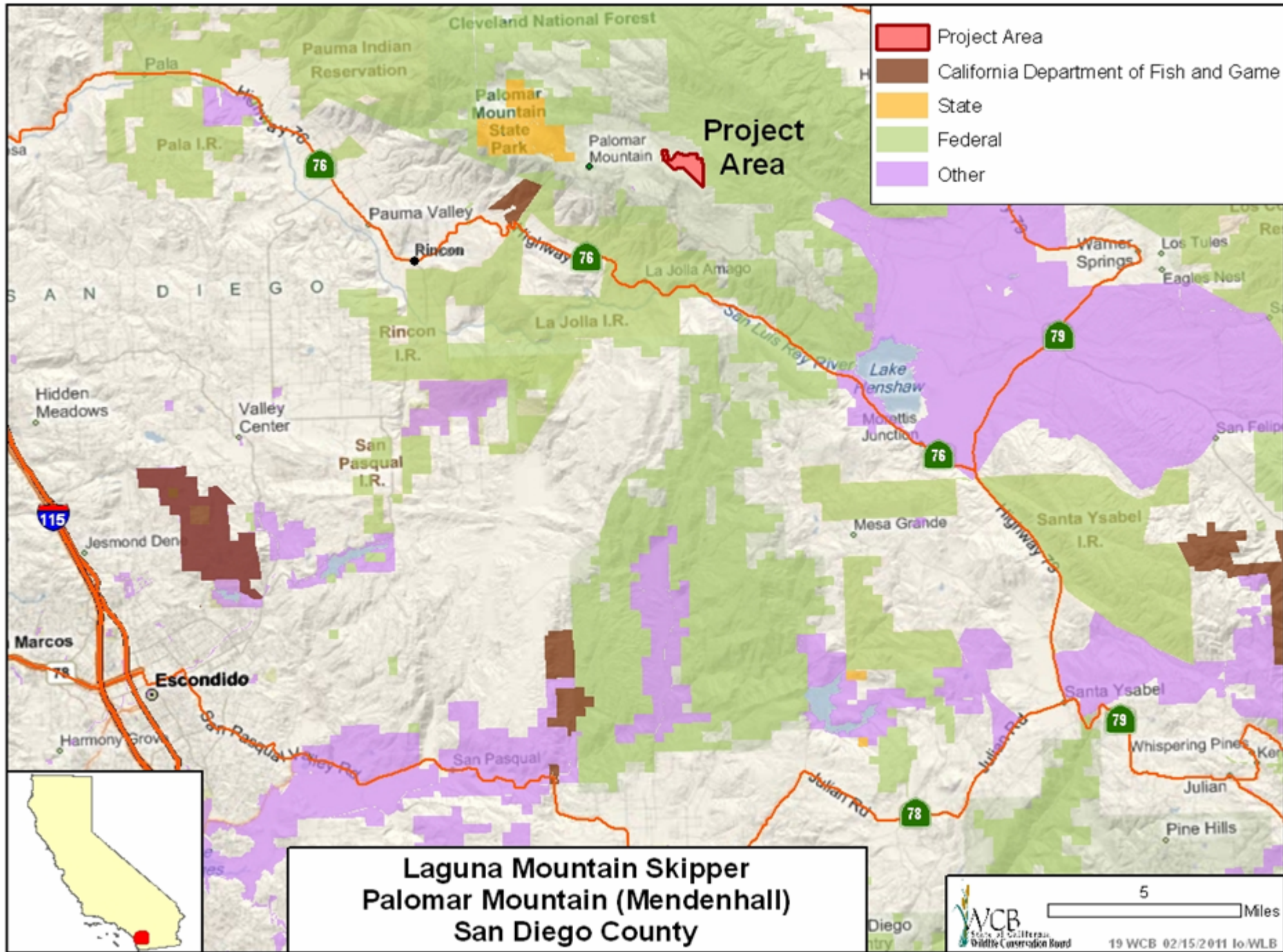


#18. Jacumba Peak
San Diego County



#18. Jacumba Peak
San Diego County





#19. Laguna Mountain Skipper, Palomar Mountain (Mendenhall)
San Diego County



■ Laguna Mountain skipper

#19. Laguna Mountain Skipper, Palomar Mountain (Mendenhall)
San Diego County



- Meadow and wooded hillside on property

#19. Laguna Mountain Skipper, Palomar Mountain (Mendenhall)
San Diego County

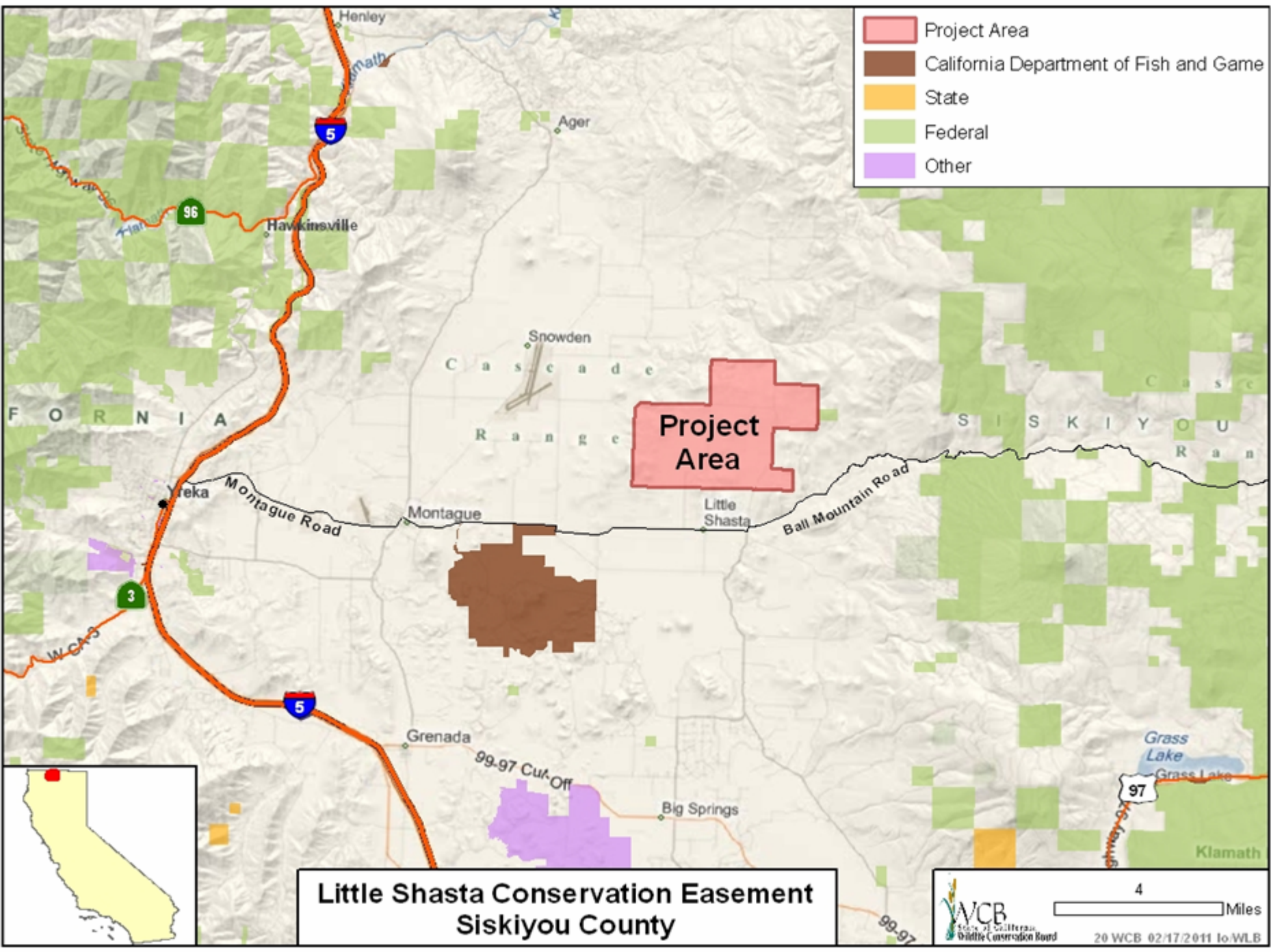


- Seasonal stream on property

#19. Laguna Mountain Skipper, Palomar Mountain (Mendenhall)
San Diego County

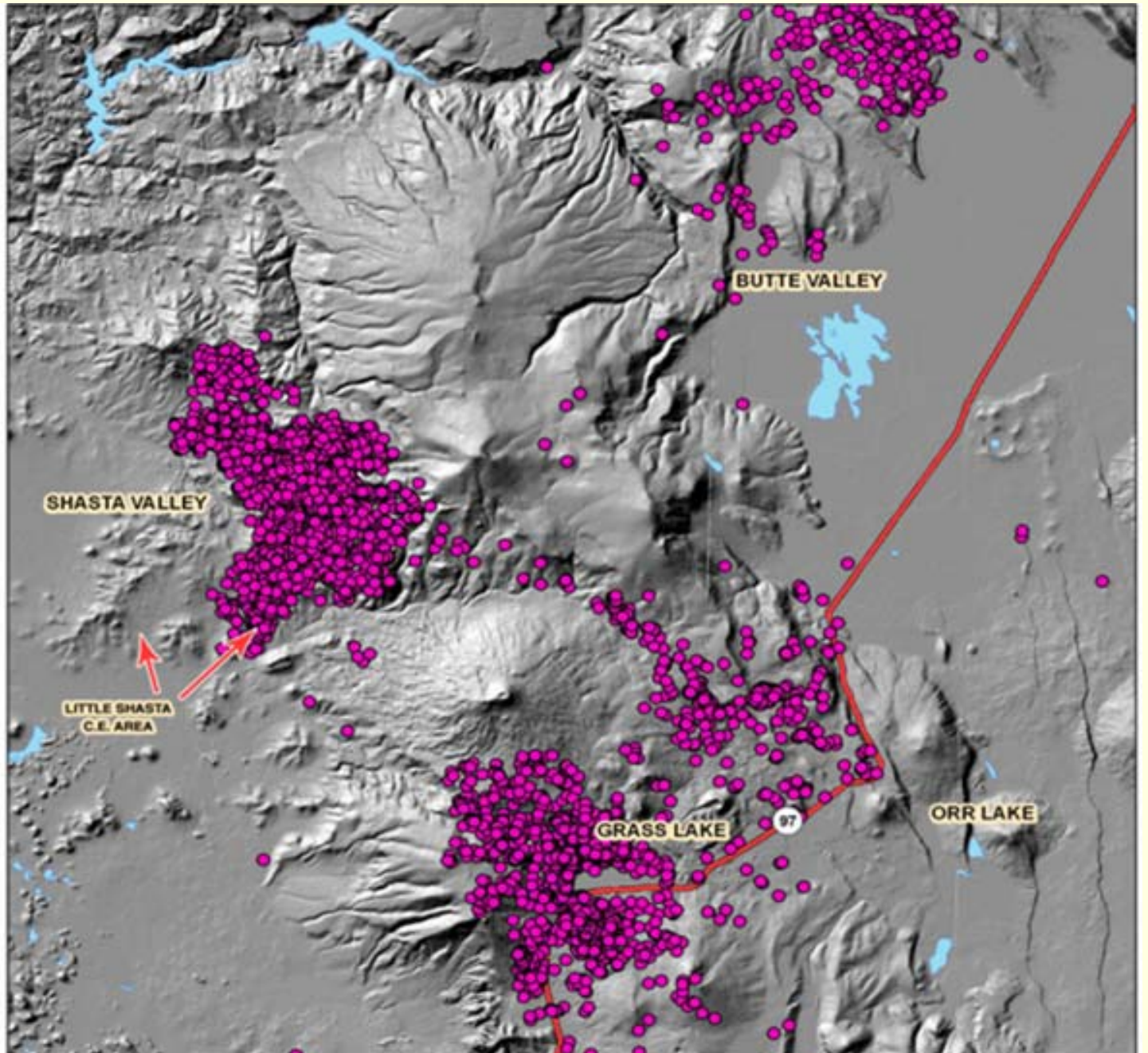


- Butterfly larval host plant (Cleveland's Horkelia) found on property



- Project Area
- California Department of Fish and Game
- State
- Federal
- Other

**Little Shasta Conservation Easement
Siskiyou County**



#20. Little Shasta Conservation Easement,
Siskiyou County



■ Roosevelt Elk on Little Shasta Property

#20. Little Shasta Conservation Easement,
Siskiyou County



■ View of Little Shasta Conservation Easement Property

#20. Little Shasta Conservation Easement,
Siskiyou County



- Viewing Site with Property Owners

#20. Little Shasta Conservation Easement,
Siskiyou County



■ Elk Fawn

#21. Shasta River Fish Passage
Siskiyou County



#21. Shasta River Fish Passage
Siskiyou County



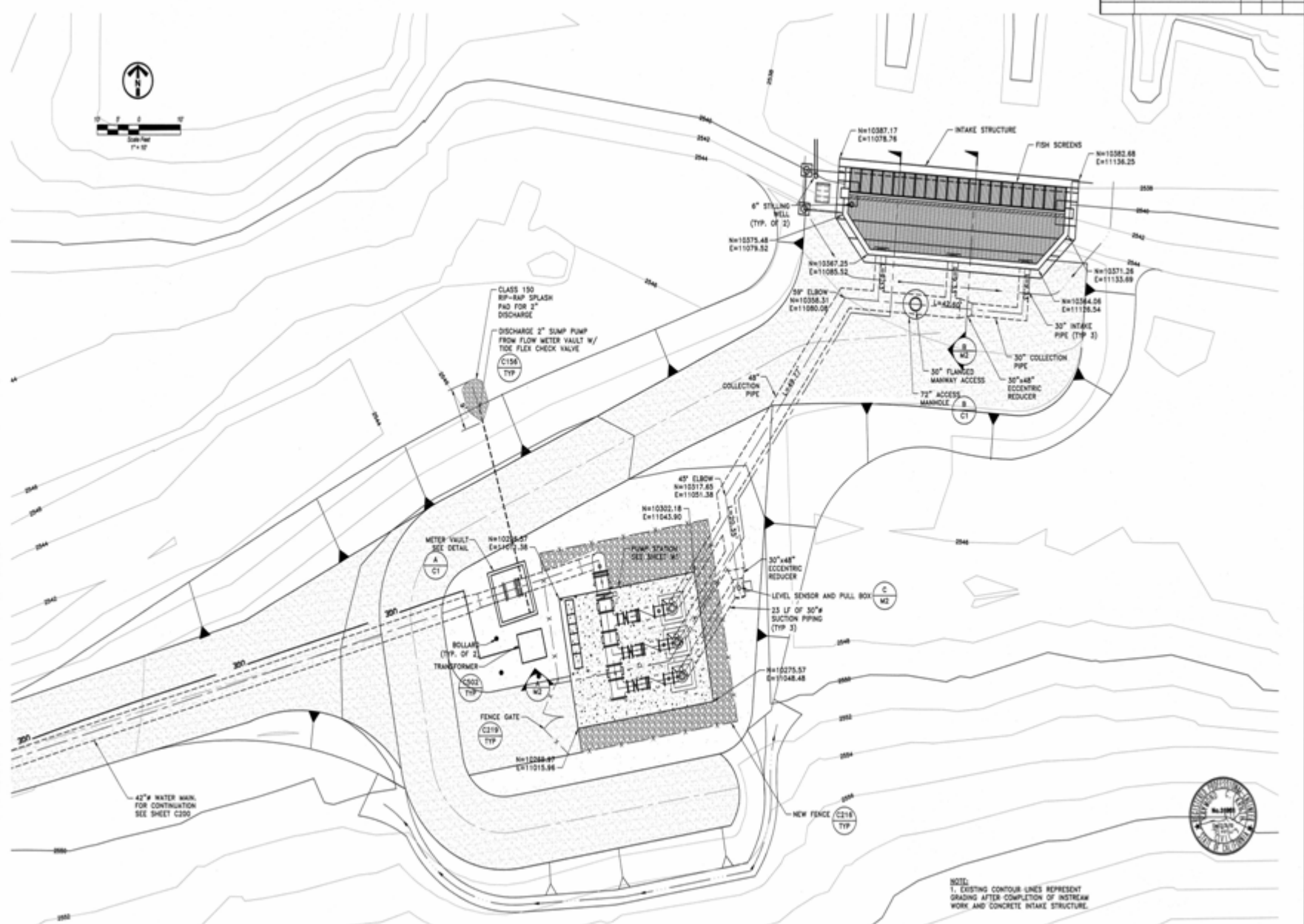
#21. Shasta River Fish Passage
Siskiyou County



#21. Shasta River Fish Passage
Siskiyou County



REVISION	DESCRIPTION	BY	APP	DATE



NOTE:
 1. EXISTING CONTOUR LINES REPRESENT
 GRADING AFTER COMPLETION OF INSTREAM
 WORK AND CONCRETE INTAKE STRUCTURE.

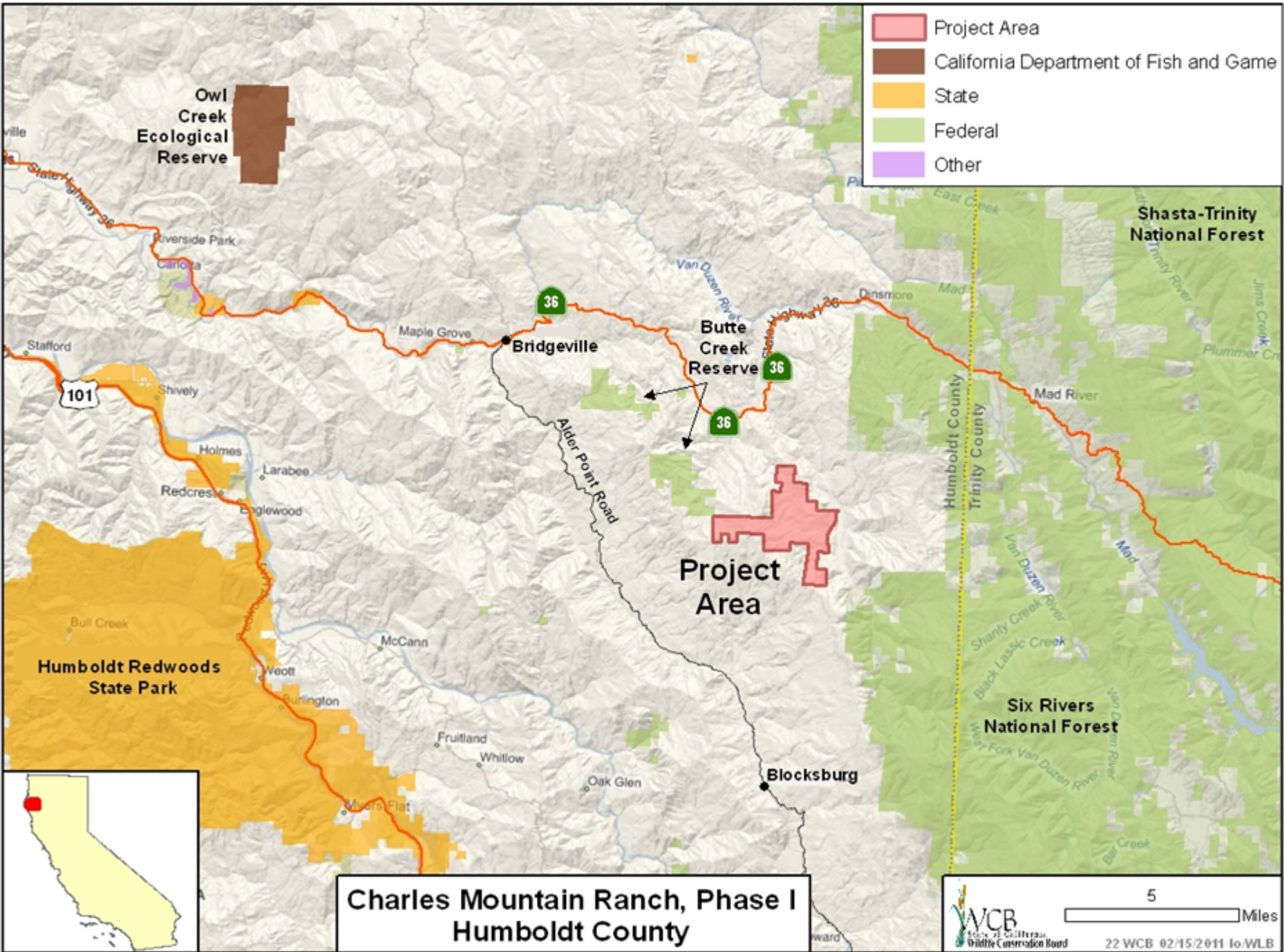


SCALE 1" = 10'-0"	REF. TO THE END OF PILE BARGE	DATE FEBRUARY 2008	DESIGNED MWH/ECG	northwest hydraulic consultants 3000 Industrial Blvd. #1000 West Sacramento, California 95691-3430 Phone: (916) 371-7400 Fax: (916) 371-7475	ECO:LOGIC Consulting Engineers 3000 Industrial Blvd. #1000 West Sacramento, California 95691-3430 Phone: (916) 371-2311 Fax: (916) 371-2319	GRENADA SIXTYFOUR COUNTY, CALIFORNIA GRENADA IRRIGATION DISTRICT FISH PASSAGE AND WATER QUALITY IMPROVEMENT PROJECT	DRAWING NUMBER C102	SHEET NUMBER 10 OF 60
	IF NOT SHOWN ON THIS SHEET WALL VERTICALLY	FILE MWH/CMB-001	DRWING LAWRENCE					

#21. Shasta River Fish Passage
Siskiyou County



- Roughened channel on Little Shasta River



**Charles Mountain Ranch, Phase I
Humboldt County**

#22. Charles Mountain Ranch, Phase I
Humboldt County



- Conifer forest encroachment is threatening the survival and regeneration of a majority of oak woodlands in our California Northcoast region

#22. Charles Mountain Ranch, Phase I
Humboldt County



■ View of forestry, grazing, and recreation areas

#22. Charles Mountain Ranch, Phase I
Humboldt County



- True Oak Woodlands groves on the Property consist primarily of California black oak and Oregon white oak

#22. Charles Mountain Ranch, Phase I
Humboldt County



- Overview of Phase I, north end of ranch, facing south

#22. Charles Mountain Ranch, Phase I
Humboldt County

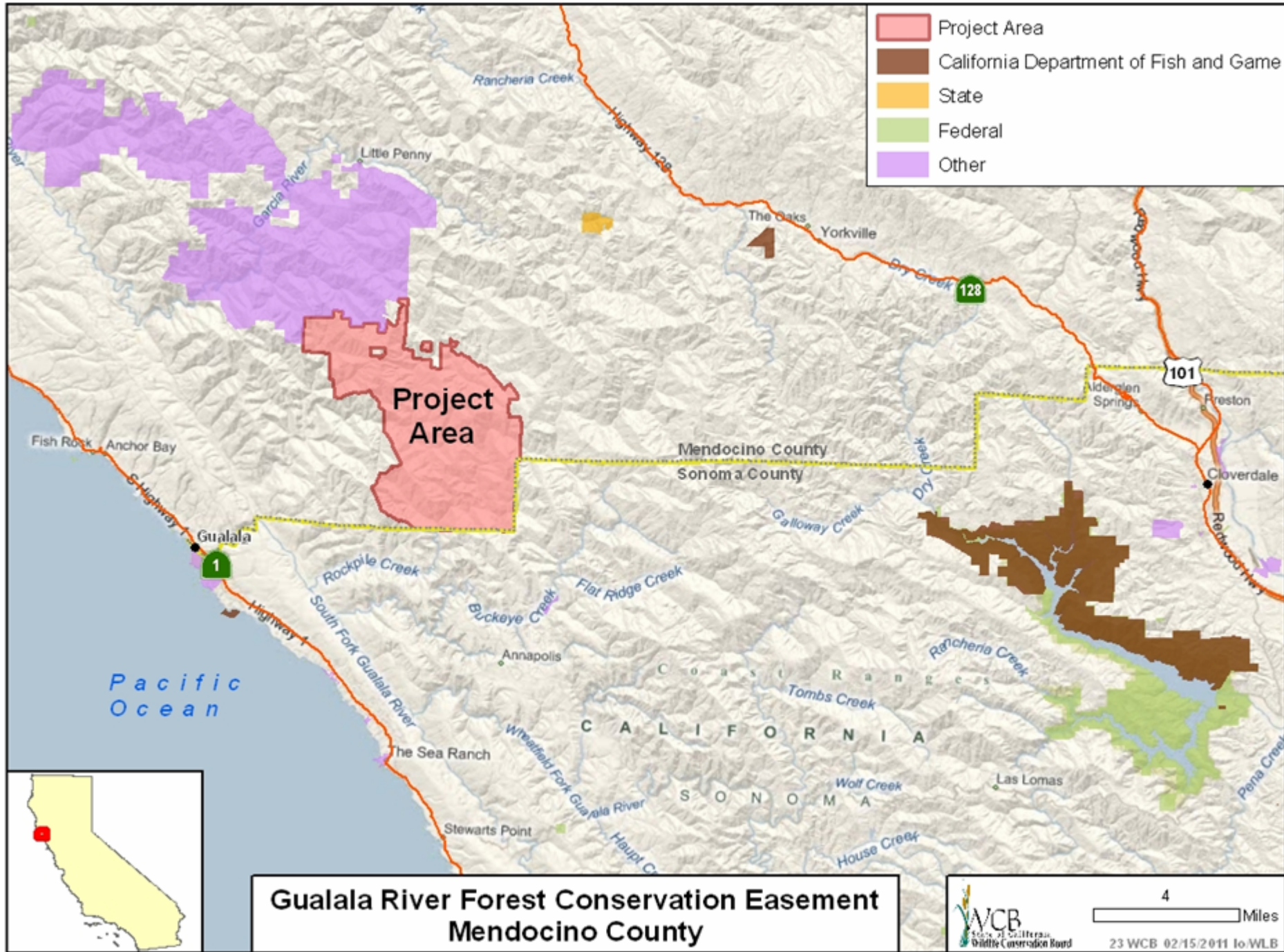


- View of grasslands, oak woodlands, conifer forests, riparian and wetland habitat

#22. Charles Mountain Ranch, Phase I
Humboldt County



- Staff members from both the Northcoast Regional Land Trust and WCB together with one of the property owners



**Gualala River Forest Conservation Easement
Mendocino County**



#23. Gualala River Forest
Mendocino County



- A view of the property from Fish Rock Rd.

#23. Gualala River Forest
Mendocino County



- Grasslands and forest found on property

#23. Gualala River Forest
Mendocino County

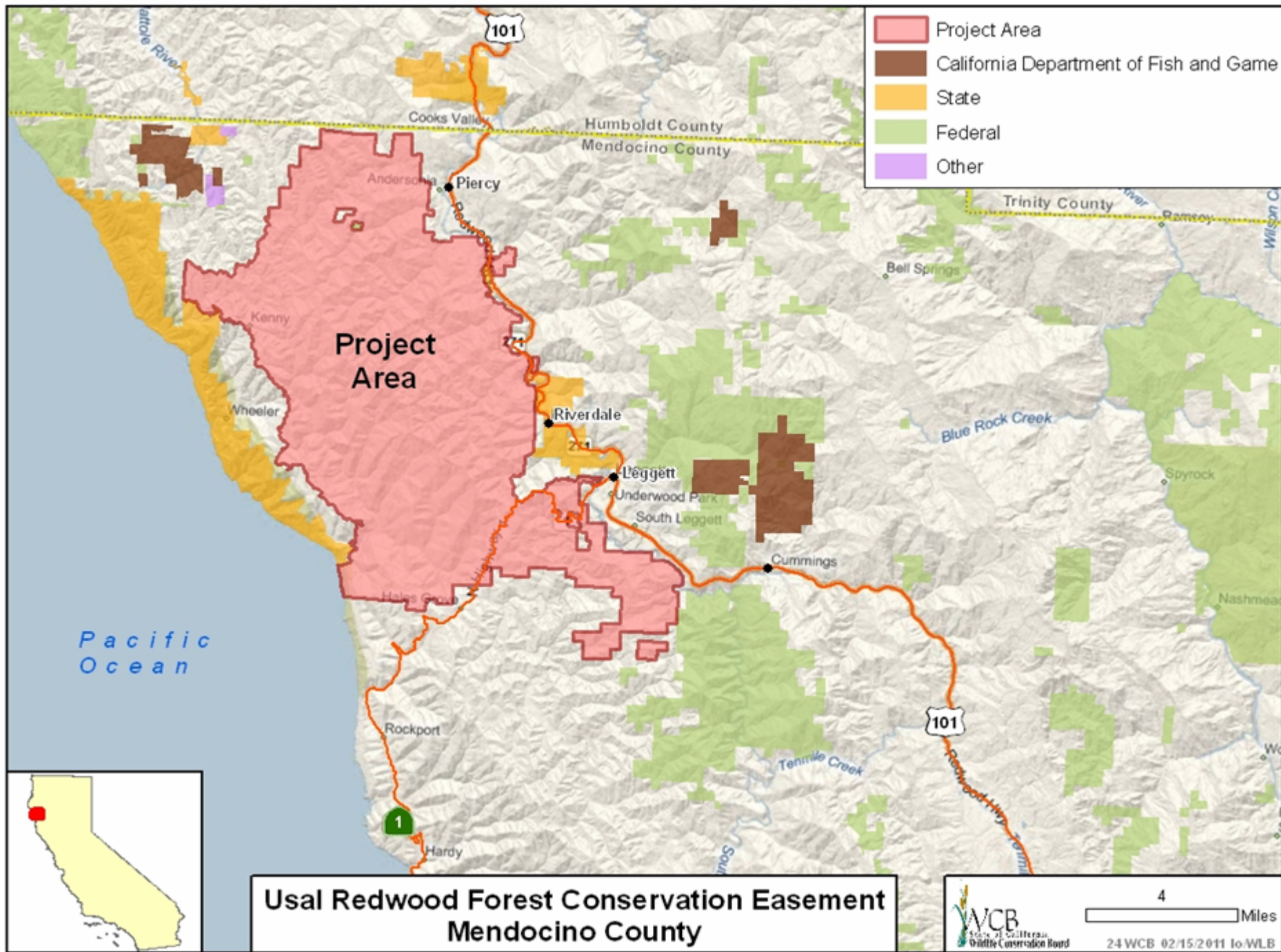


- North fork of the Gualala River on property

#23. Gualala River Forest
Mendocino County



- Maguire Ridge on property



**Usal Redwood Forest Conservation Easement
Mendocino County**

#24. Usal Forest Conservation Easement
Mendocino County



■ Overview of the forest

#24. Usal Forest Conservation Easement
Mendocino County



- Riparian habitat found on the property

#24. Usal Forest Conservation Easement
Mendocino County



- View toward ocean from interior of the property

#24. Usal Forest Conservation Easement
Mendocino County



- Elk found on property

#24. Usal Forest Conservation Easement
Mendocino County

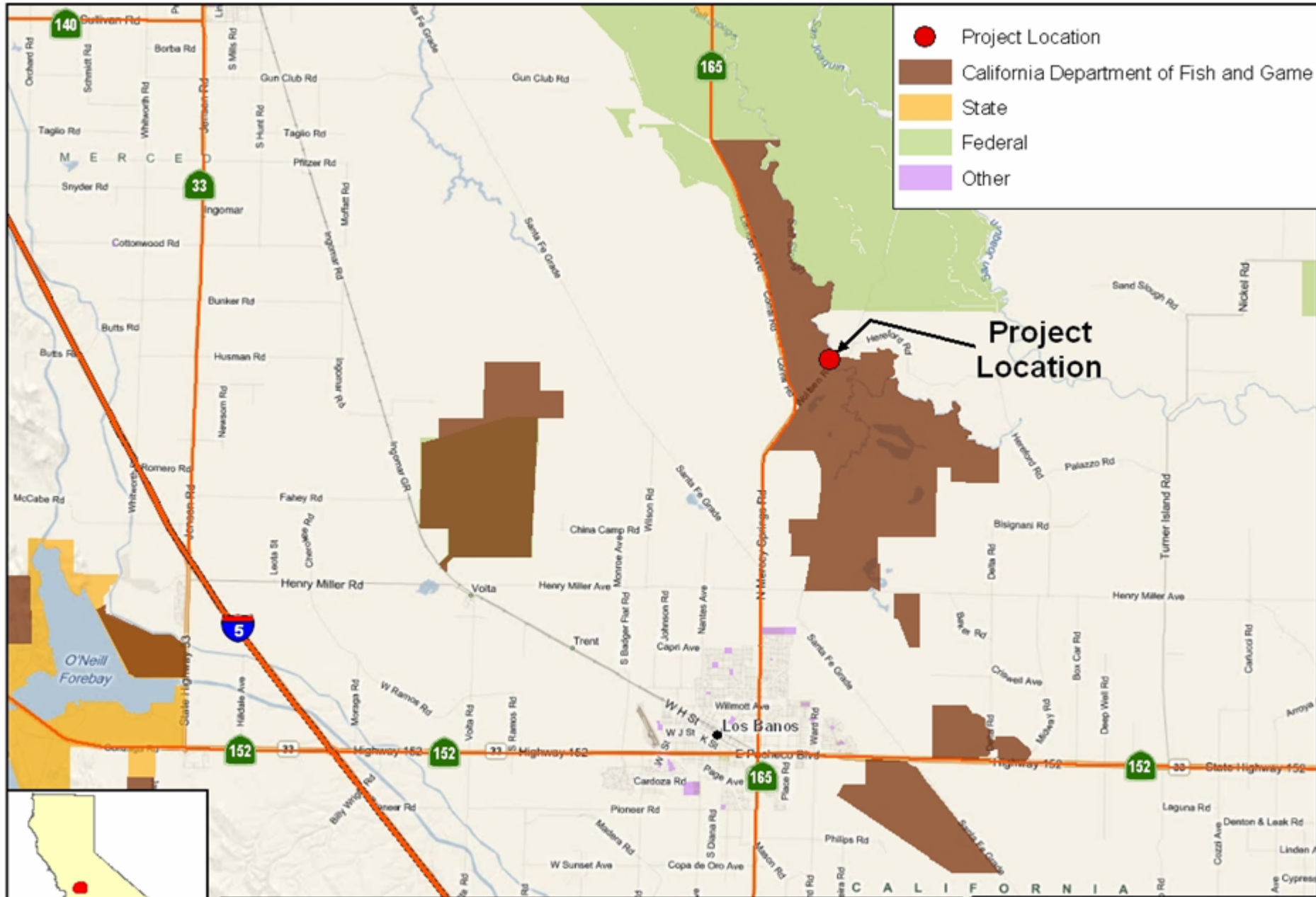


■ Usal beach

#24. Usal Forest Conservation Easement
Mendocino County




■ Overview of property



- Project Location
- California Department of Fish and Game
- State
- Federal
- Other

Project Location

**North Grasslands Wildlife Area Hunter Check Station
Merced County**



3 Miles

25 WCB 02/04/2011 to WL B



Abandoned Building

Existing Check Station

Wolfsen Rd

© 2011 Google
Image © 2011 DigitalGlobe

© 2011 Google

104 m

Imagery Date: Sep 10, 2006

37°09'31.65" N

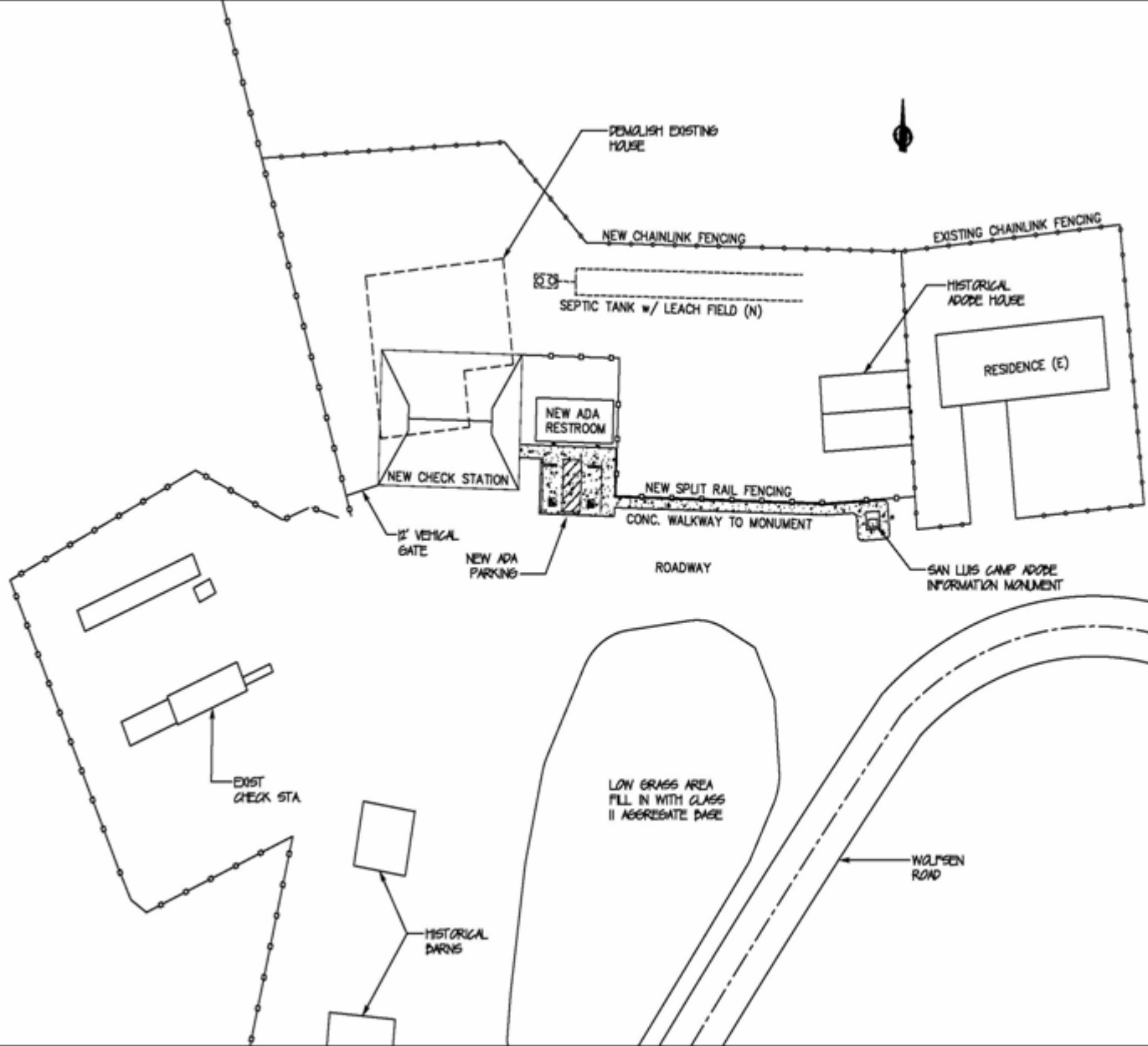
120°48'49.54" W

elev 25 m

Eye alt

386 m

N



SITE PLAN

SCOPE OF WORK

- 1) DEMOLISH EXISTING HOUSE WITH LEAD BASED PAINT. REMOVE OLD CONCRETE FOUNDATION AND FOOTINGS, DELAPIDATED WOOD FENCING, ABANDONED POWERPOLES, AND OTHER MISCELLANEOUS ITEMS.
- 2) CONSTRUCT NEW WOOD FRAMED HUNTER CHECK STATION TO SERVE AS NORTH GRASSLANDS WILDLIFE AREA OFFICE.
- 3) INSTALL NEW PRE-FABRICATED CONCRETE RESTROOMS MEETING ALL ACCESS COMPLIANCE REQUIREMENTS.
- 4) CONSTRUCT NEW ACCESS COMPLIANT PARKING AREA WITH PATH OF TRAVEL TO RESTROOMS, CHECK STATION, AND SAN LUIS CAMP ADOBE MONUMENT.
- 5) INSTALL NEW SEPTIC TANK WITH LEACH FIELD TO SERVE CHECK STATION AND PUBLIC RESTROOMS.
- 6) FILL IN LOW AREAS AND RESURFACE ROADWAY WITH NEW CLASS II AGRGEGATE BASE.
- 7) INSTALL NEW FENCING AROUND SITE.

SITE PLAN

1" = 20'±0"

<p>DATE PREP: 08/11/11</p>	<p>SCALE: AS SHOWN</p>		<p>DESIGNED BY: <u>ROBERT BENSON</u></p> <p>CHECKED BY: <u>ROBERT BENSON</u></p> <p>APPROVED BY: <u>RUBEN SALVADOR, JR.</u></p> <p>DATE: <u>8/11/11</u></p>	<p>STATE OF CALIFORNIA THE RESOURCES AGENCY Department of Fish and Game</p>	<p>NORTH GRASSLAND WILDLIFE AREA MERCED COUNTY New Hunter Check Station</p>	<p>SITE PLAN</p>	<p>PROJECT NO: WI6-2011-001</p> <p>SHEET NO: CI (02 of 20)</p>
----------------------------	------------------------	--	---	--	--	-------------------------	--

#25. North Grasslands Wildlife Area Hunter Check Station
Merced County



- Old residence on site to be removed for the new check station

#25. North Grasslands Wildlife Area Hunter Check Station
Merced County



- Current Check Station on last legs; site will be used for additional parking

#25. North Grasslands Wildlife Area Hunter Check Station
Merced County



- Trash, unused power poles and old foundations will be removed and the area will be planted with native plants; historic buildings in background will be preserved and protected

#25. North Grasslands Wildlife Area Hunter Check Station
Merced County



- The green weedy area surrounded by orange cones behind the fence will be raised and graveled to provide additional parking

#25. North Grasslands Wildlife Area Hunter Check Station
Merced County

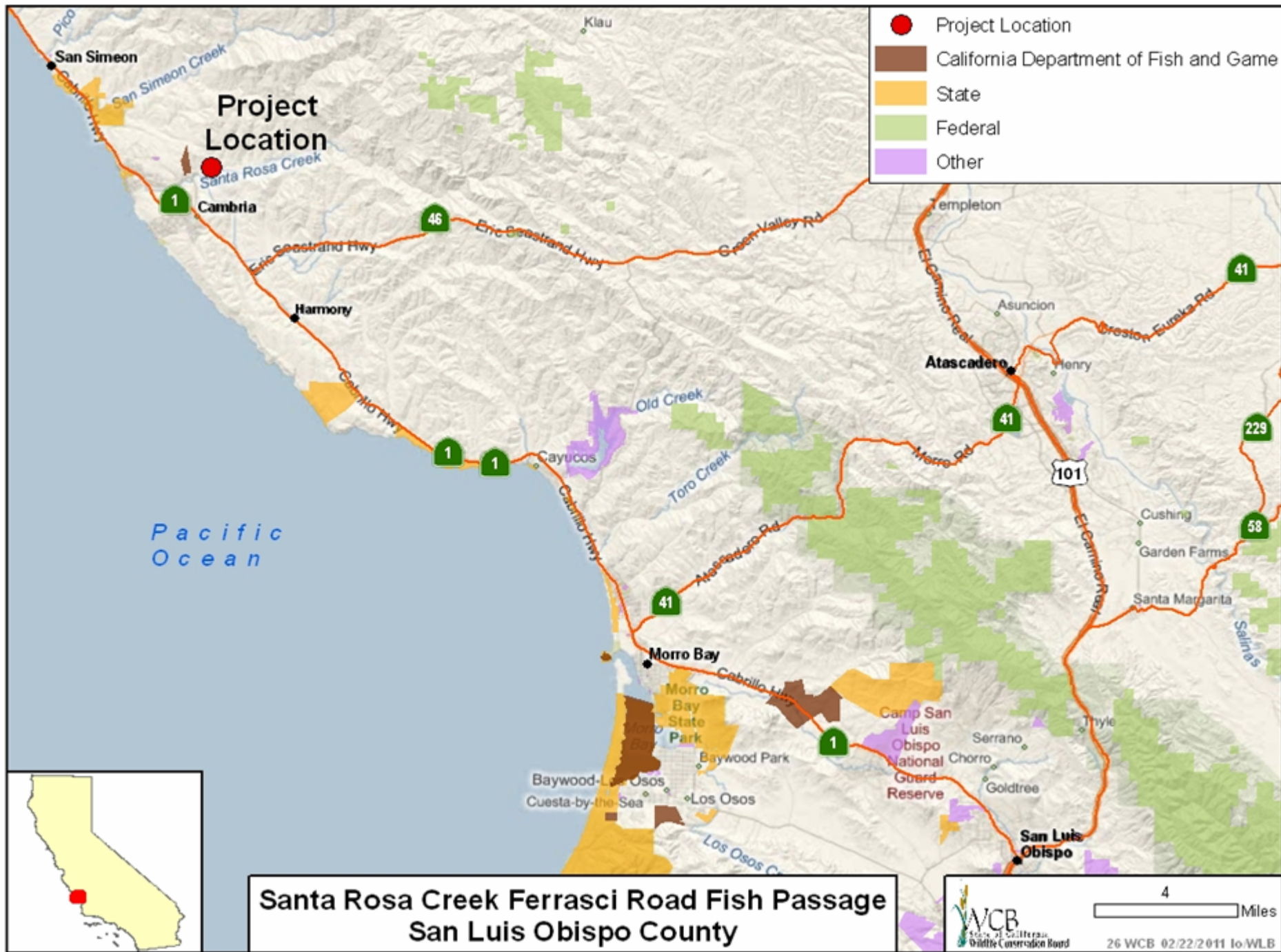


- There are many other wetlands like these on the North Grasslands Wildlife Area that are serviced by this hunter check station

#25. North Grasslands Wildlife Area Hunter Check Station
Merced County



- A day in the duck blind can be enjoyed by anyone



#26. Santa Rosa Creek Ferrasci Road Fish Passage, San Luis Obispo County



- Protected Areas, Ferrasci Crossing Fish Passage Project

#26. Santa Rosa Creek Ferrasci Road Fish Passage,
San Luis Obispo County

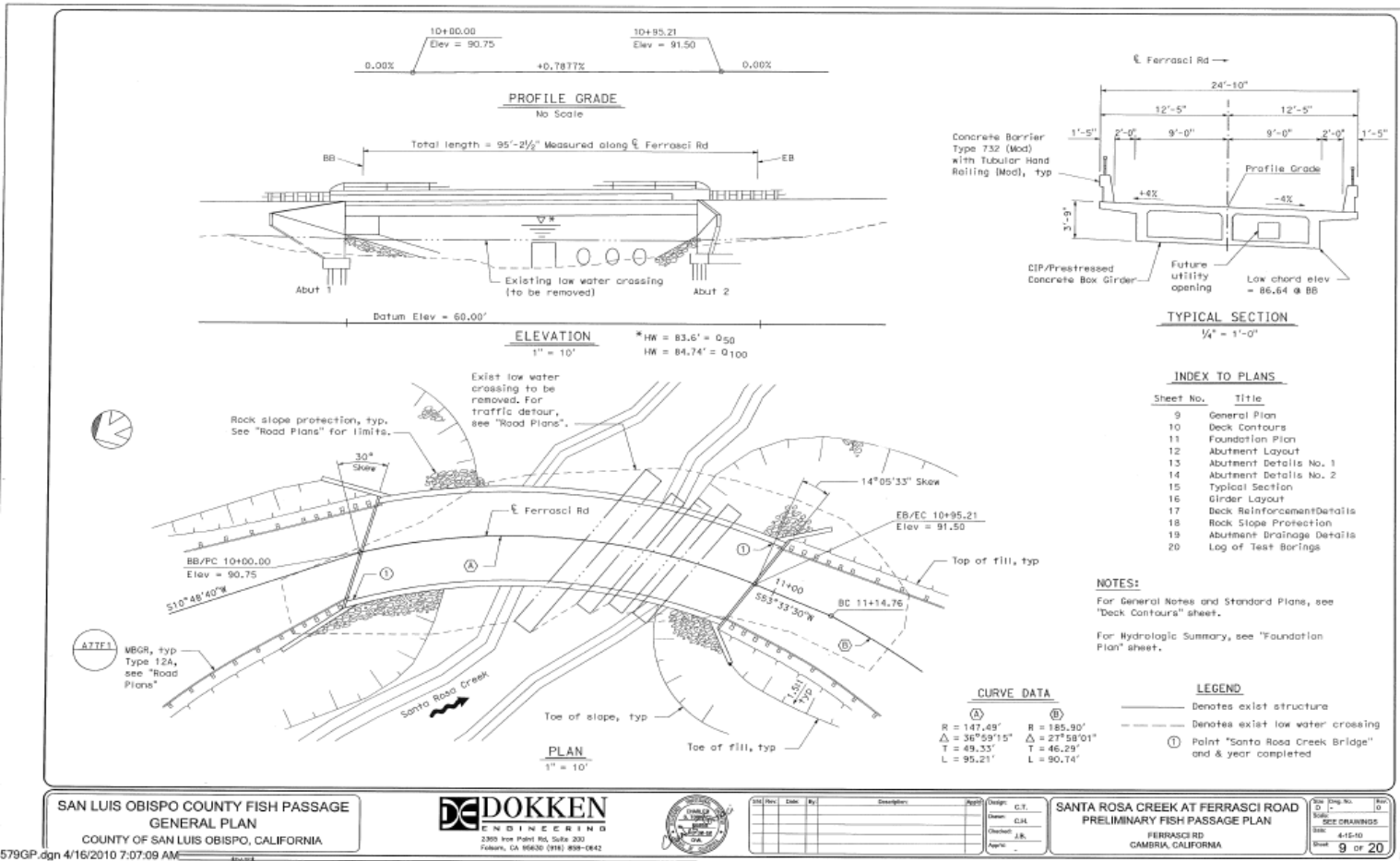


#26. Santa Rosa Creek Ferrasci Road Fish Passage,
San Luis Obispo County



- Ferrasci Road Crossing: Typical high flow condition (2005)

#26. Santa Rosa Creek Ferrasci Road Fish Passage, San Luis Obispo County



SAN LUIS OBISPO COUNTY FISH PASSAGE
GENERAL PLAN
COUNTY OF SAN LUIS OBISPO, CALIFORNIA

DE DOKKEN
ENGINEERING
2309 Iron Point Rd, Suite 203
Folsom, CA 95630 (916) 899-0842



Rev	Date	By	Description	Checked	C.T.

SANTA ROSA CREEK AT FERRASCI ROAD
PRELIMINARY FISH PASSAGE PLAN
FERRASCI RD
CAMBRIA, CALIFORNIA

Sheet No.	Title
9 of 20	9 of 20

#27. Cold Creek Ecological Area Los Angeles County



- View looking southwest; subject in foreground – Malibu Canyon in far distance

#27. Cold Creek Ecological Area
Los Angeles County



- View looking north from near center of parcel

#27. Cold Creek Ecological Area
Los Angeles County



- View of one of the two year round springs on the property

#27. Cold Creek Ecological Area
Los Angeles County

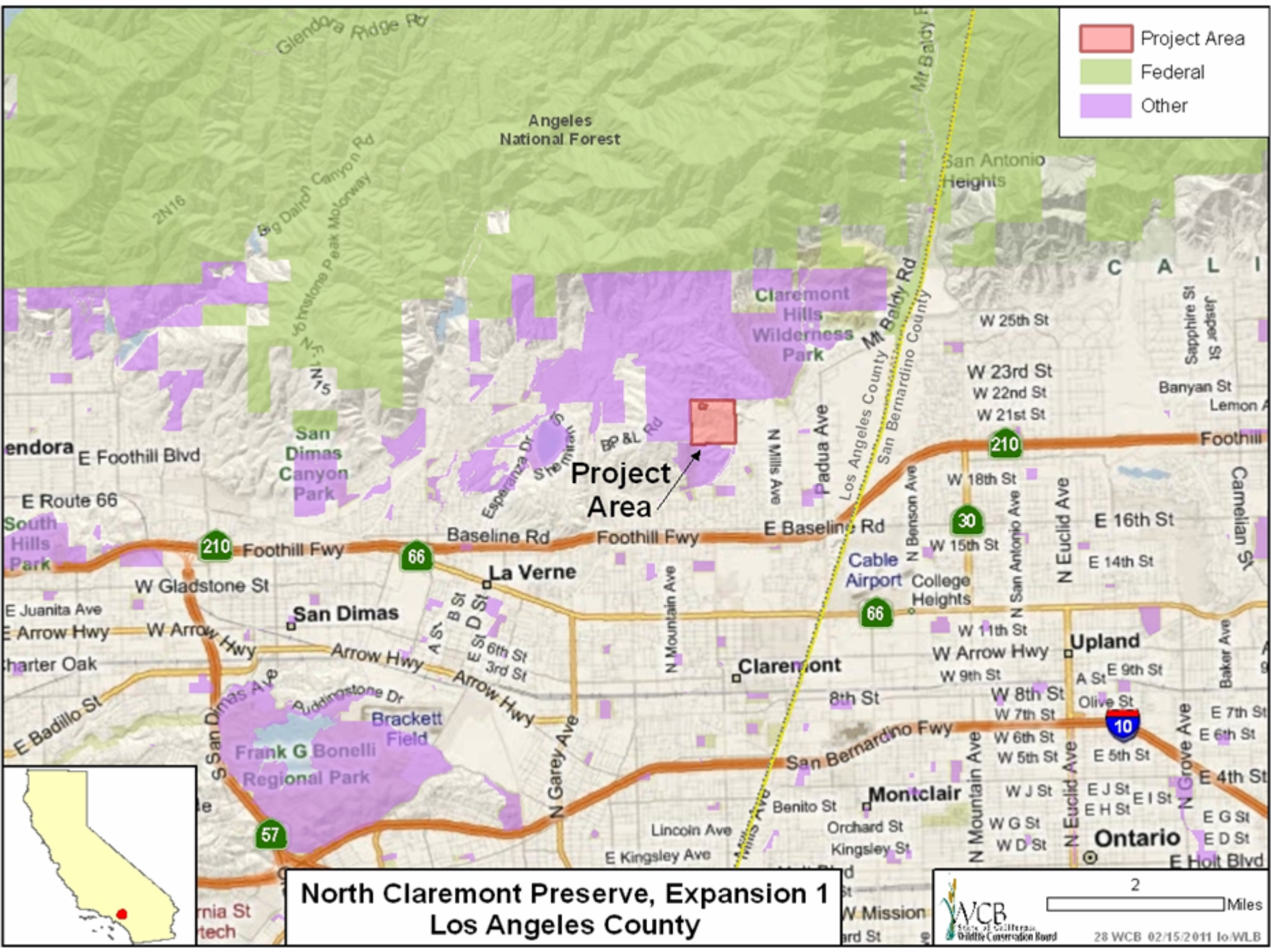


- View of subject near center of parcel, looking southwest

#27. Cold Creek Ecological Area
Los Angeles County



- View looking easterly; subdivision on north just in view on left side of photo



- Project Area
- Federal
- Other

**North Claremont Preserve, Expansion 1
Los Angeles County**

#28. North Claremont Preserve, Expansion 1
Los Angeles County



- Looking westerly at one of the more rugged portions of the property

#28. North Claremont Preserve, Expansion 1
Los Angeles County



- Looking toward the southwest; City of Claremont in the background

#28. North Claremont Preserve, Expansion 1
Los Angeles County

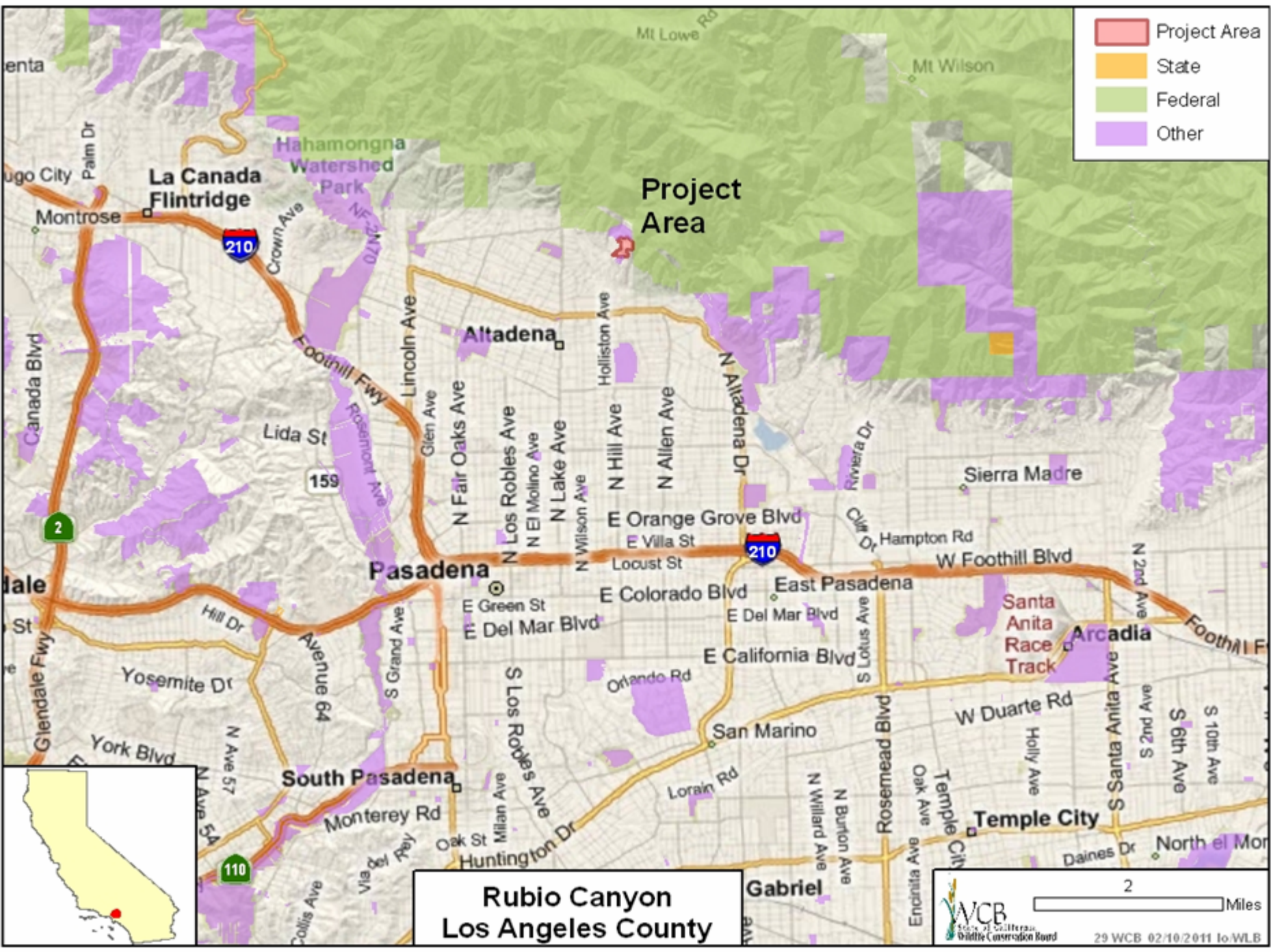


- Hilly interior portion of the property

#28. North Claremont Preserve, Expansion 1
Los Angeles County



- Looking south with the City of Claremont in the distance



- Project Area
- State
- Federal
- Other

**Rubio Canyon
Los Angeles County**

#29. Rubio Canyon
Los Angeles County



- Rubio Canyon looking northeast across the catch basin in Altadena

#29. Rubio Canyon
Los Angeles County



- Aerial photo of Rubio Canyon, looking north, with subject property line delineated

#29. Rubio Canyon
Los Angeles County



- Looking west down west-facing valley, with reservoir in background

#29. Rubio Canyon
Los Angeles County

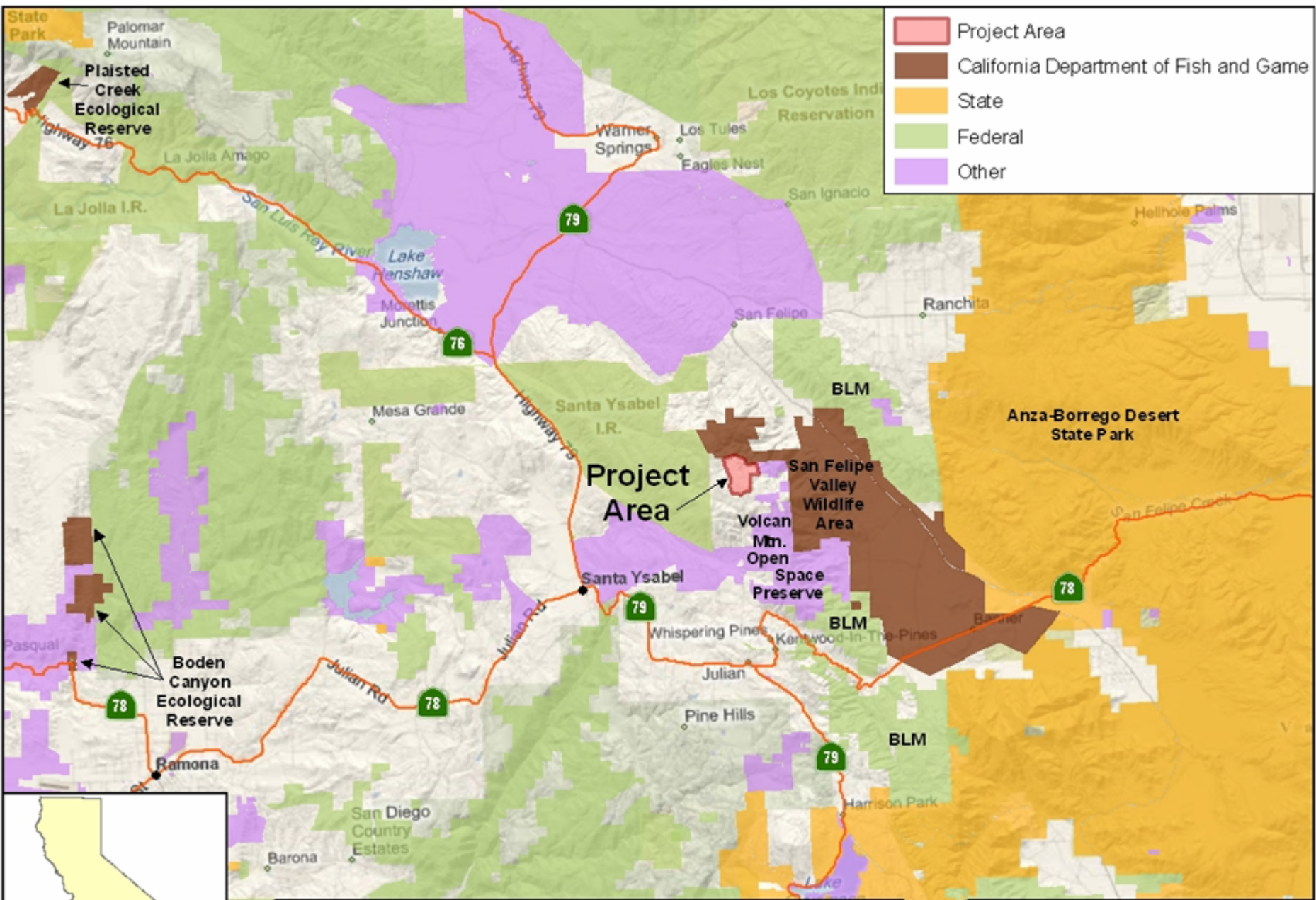


- Looking northwest at south facing valley, in middle-right of photo

#29. Rubio Canyon
Los Angeles County



- Looking north up south-facing valley



- Project Area
- California Department of Fish and Game
- State
- Federal
- Other

**San Felipe Valley Wildlife Area, Expansion 4
San Diego County**

#31. San Felipe Valley Wildlife Area, Expansion 4
San Diego County



- Volcan Mountain in the Distance

#31. San Felipe Valley Wildlife Area, Expansion 4 San Diego County



- San Felipe Valley Wildlife Area and Volcan Mountain