

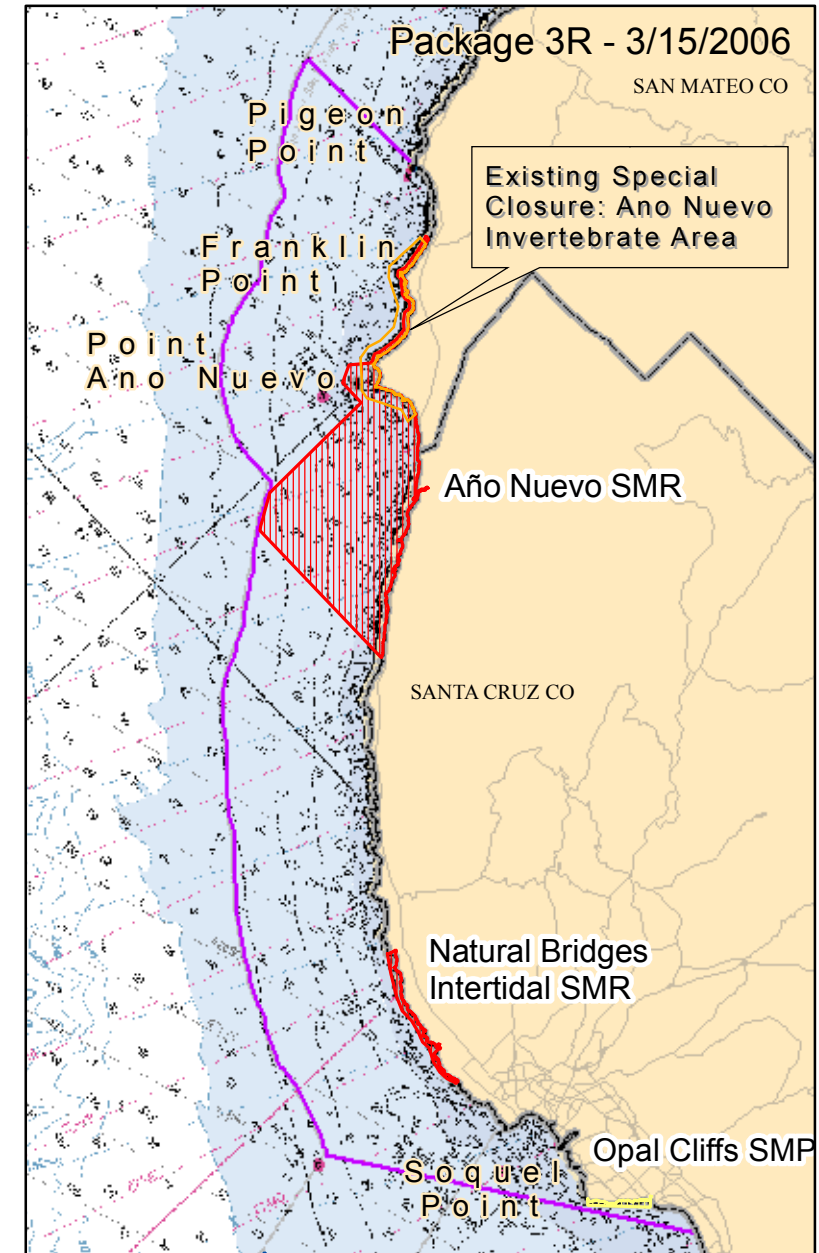
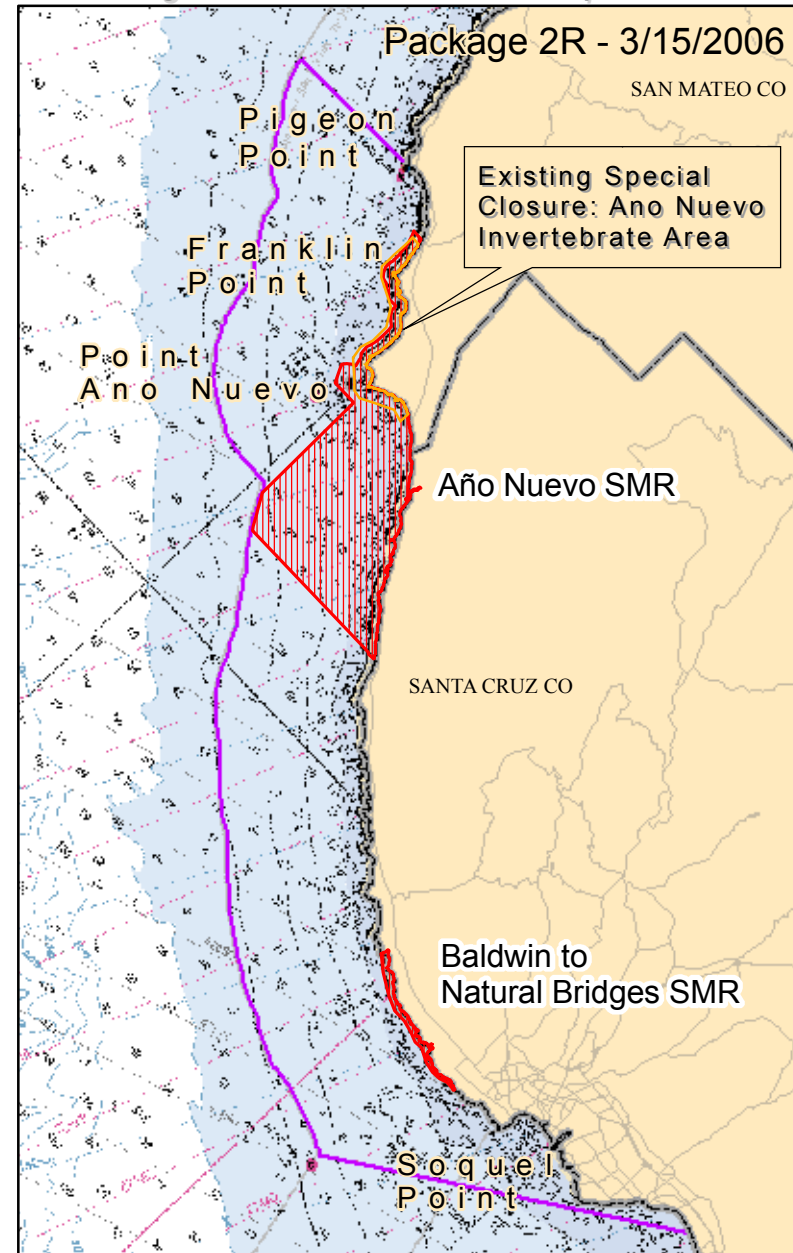
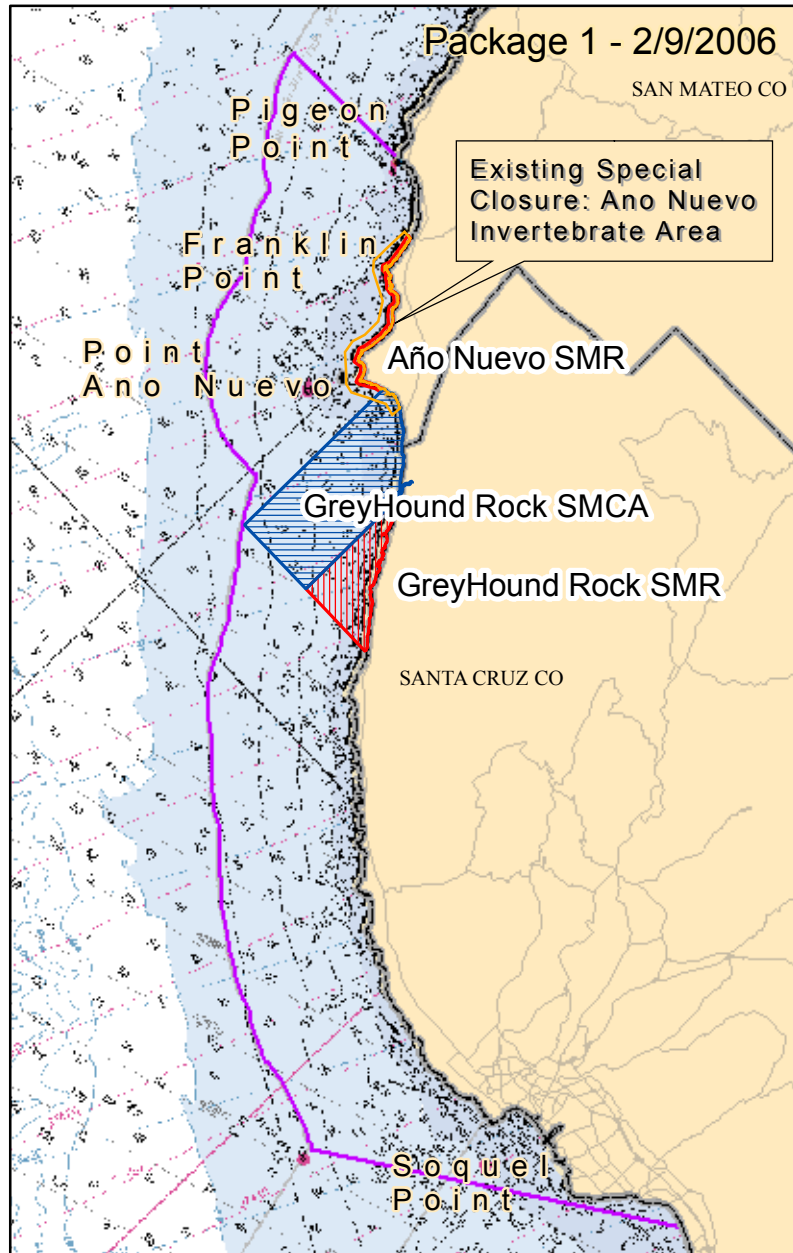
California Marine Life Protection Act Initiative Central Coast Project

**Side-by-Side Comparison of Proposed MPA
Packages 1, 2R and 3R (maps and proposed regulations)**




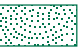

Subregion 1: Pigeon Point to Capitola

MLPA Central Coast Study Region: Subregion 1

Pigeon Point to Capitola



Blue Ribbon Task Force Recommended MPA Packages 1, 2R and 3R

-  State Marine Conservation Area
-  State Marine Park
-  State Marine Reserve
-  State Marine Recreational Management Area
-  Subregion Boundary
-  Existing Marine Protected Area

Prepared by DFG
Marine Region GIS
3/31/2006



California Marine Life Protection Act Initiative: Central Coast Project
Existing MPAs and Allowed/Disallowed Uses in Package 0 and Proposed MPAs and Allowed/Disallowed Uses in Packages 1, 2R and 3F
Subregion 1 (Pigeon Point to Capitola) - March 29, 2006

Package 0 (Existing MPAs)		Package 1 (2/9/06 version)		Package 2R (3/15/06)		Package 3R (3/15/06)	
MPA Name (<i>Level of Protection</i>)	Allowed/ Disallowed Uses	MPA Name (<i>Level of Protection</i>)	Allowed/ Disallowed Uses	MPA Name (<i>Level of Protection</i>)	Allowed/ Disallowed Uses	MPA Name (<i>Level of Protection</i>)	Allowed/ Disallowed Uses
Año Nuevo Special Closure (SMCA Low)	Take of invertebrates is not allowed between November 30 and April 30 .	Año Nuevo State Marine Reserve (SMR)	No take, including no shore fishing.	Año Nuevo State Marine Reserve (SMR + SMCA Moderate¹)	No take.	Año Nuevo State Marine Reserve (SMR + SMCA Moderate¹)	No take.
		Greyhound Rock State Marine Conservation Area (SMCA Moderate)	No take, EXCEPT for coastal pelagic species (including squid) and Dungeness crab. Fishing for salmon outside of 25fm is also allowed. Fishing regulations within Scott and Waddell creeks shall not be affected by this MPA.				
		Greyhound Rock State Marine Reserve (SMR + SMCA Moderate¹)	No take.				
				Baldwin to Natural Bridges State Marine Reserve (SMR)	No take.	Natural Bridges Intertidal State Marine Reserve (SMR)	No take.
						Opal Cliffs State Marine Park (SMP Low)	No invertebrate take, shore fishing only

¹ SAT protection level depends on status of existing kelp lease. Since SMR protection level is inconsistent with kelp harvest, SAT will evaluate MPA both ways to provide information for decision-makers