

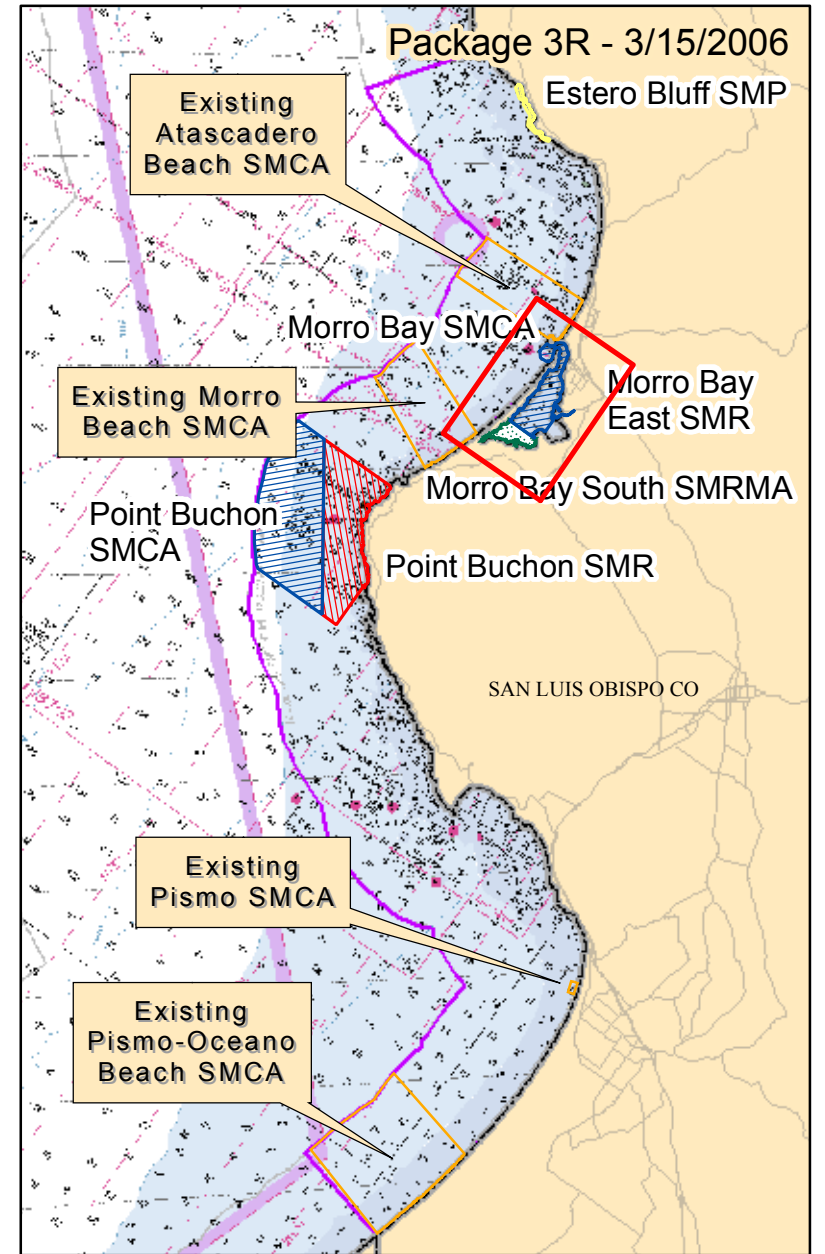
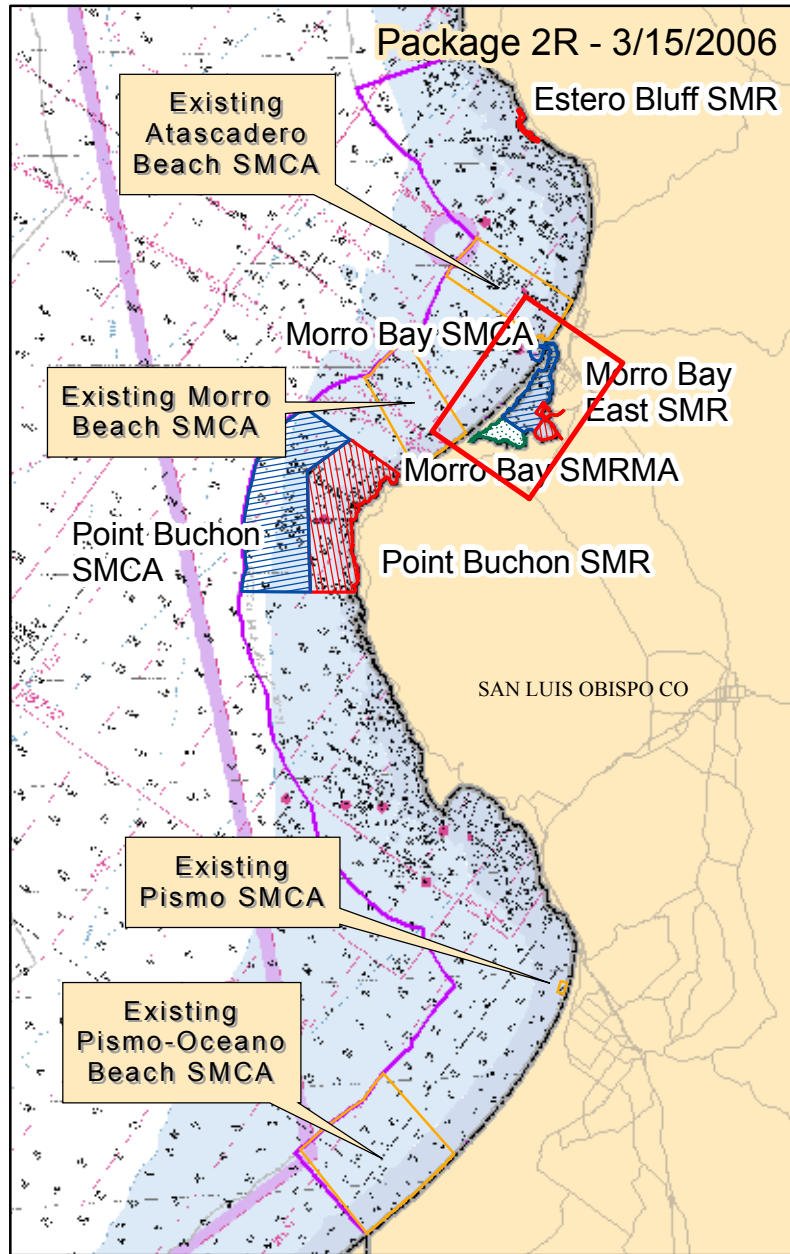
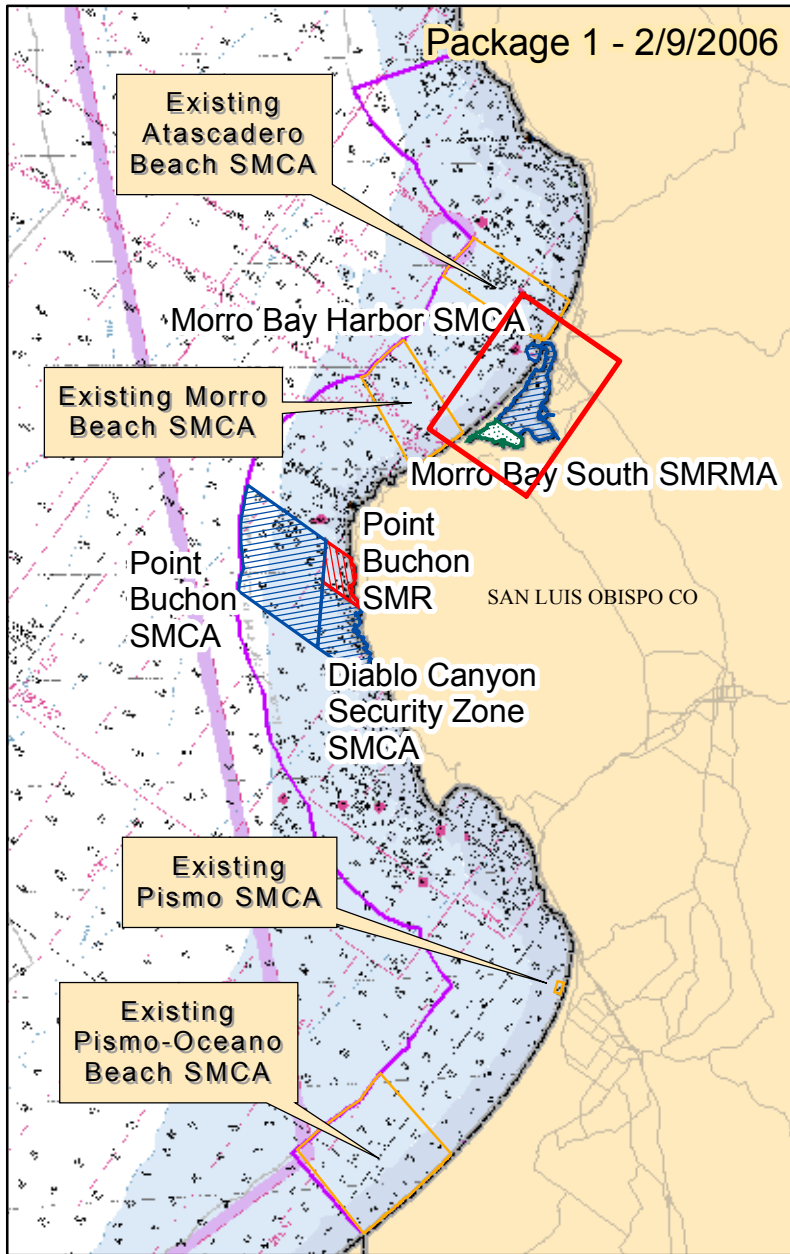
California Marine Life Protection Act Initiative Central Coast Project

**Side-by-Side Comparison of Proposed MPA
Packages 1, 2R and 3R (maps and proposed regulations)**




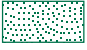



Subregion 6: Point Estero to Santa Maria River

MLPA Central Coast Study Region: Subregion 6

Point Estero to Santa Maria River



Blue Ribbon Task Force Recommended MPA Packages 1, 2R and 3R

- | | | | | | | | | | | | | | |
|---|--------------------------------|---|-------------------|---|----------------------|---|---|---|--------------------|---|--------------------------------|---|-------------------------|
|  | State Marine Conservation Area |  | State Marine Park |  | State Marine Reserve |  | State Marine Recreational Management Area |  | Subregion Boundary |  | Existing Marine Protected Area |  | Inset on Following Page |
|---|--------------------------------|---|-------------------|---|----------------------|---|---|---|--------------------|---|--------------------------------|---|-------------------------|

Prepared by DFG
Marine Region GIS
3/31/2006



0 2.5 5 10 Miles

California Marine Life Protection Act Initiative: Central Coast Project
Existing MPAs and Allowed/Disallowed Uses in Package 0 and Proposed MPAs and Allowed/Disallowed Uses in Packages 1, 2R and 3F
Subregion 6 (Point Estero to Santa Maria River) - March 29, 2006

Package 0 (Existing MPAs)		Package 1 (2/9/06 version)		Package 2R (3/15/06)		Package 3R (3/15/06)	
MPA Name (<i>Level of Protection</i>)	Allowed/ Disallowed Uses	MPA Name (<i>Level of Protection</i>)	Allowed/ Disallowed Uses	MPA Name (<i>Level of Protection</i>)	Allowed/ Disallowed Uses	MPA Name (<i>Level of Protection</i>)	Allowed/ Disallowed Uses
				Estero Bluff State Marine Reserve (SMR)	No take.	Estero Bluff State Marine Park (SMP Low)	No invertebrate take; shore fishing only
Atascadero Beach State Marine Conservation Area (SMCA Low)	Take of clams is prohibited. Take of other living marine resources is allowed.						
Morro Beach State Marine Conservation Area (SMCA Low)	Take of clams is prohibited. Take of other living marine resources is allowed.						
		Point Buchon State Marine Reserve (SMR)	No commercial or recreational fishing permitted, including no take of invertebrates.	Point Buchon State Marine Reserve (SMR)	No take.	Point Buchon State Marine Reserve (SMR)	No take.
		Point Buchon State Marine Conservation Area (SMCA High)	Commercial and recreational salmon fishing only allowed.	Point Buchon State Marine Conservation Area (SMCA High)	No take of living marine resources except fishing for salmon and albacore allowed.	Point Buchon State Marine Conservation Area (SMCA High)	Allows take of salmon and albacore only
		Diablo Canyon Security Zone State Marine Conservation Area (SMCA High)	No take, no entrance.				
Pismo State Marine Conservation Area (SMCA Low)	Take of all invertebrates and marine aquatic plants is prohibited except commercial take of algae other than giant kelp and bull kelp. Take of finfish is allowed.						
Pismo-Oceano State Marine Conservation Area (SMCA Low)	Take of clams is prohibited. Commercial take of giant kelp and bull kelp is prohibited. Take of other living marine resources is allowed.						

SMCA = state marine conservation area, SMP = state marine park, SMR = state marine reserve