

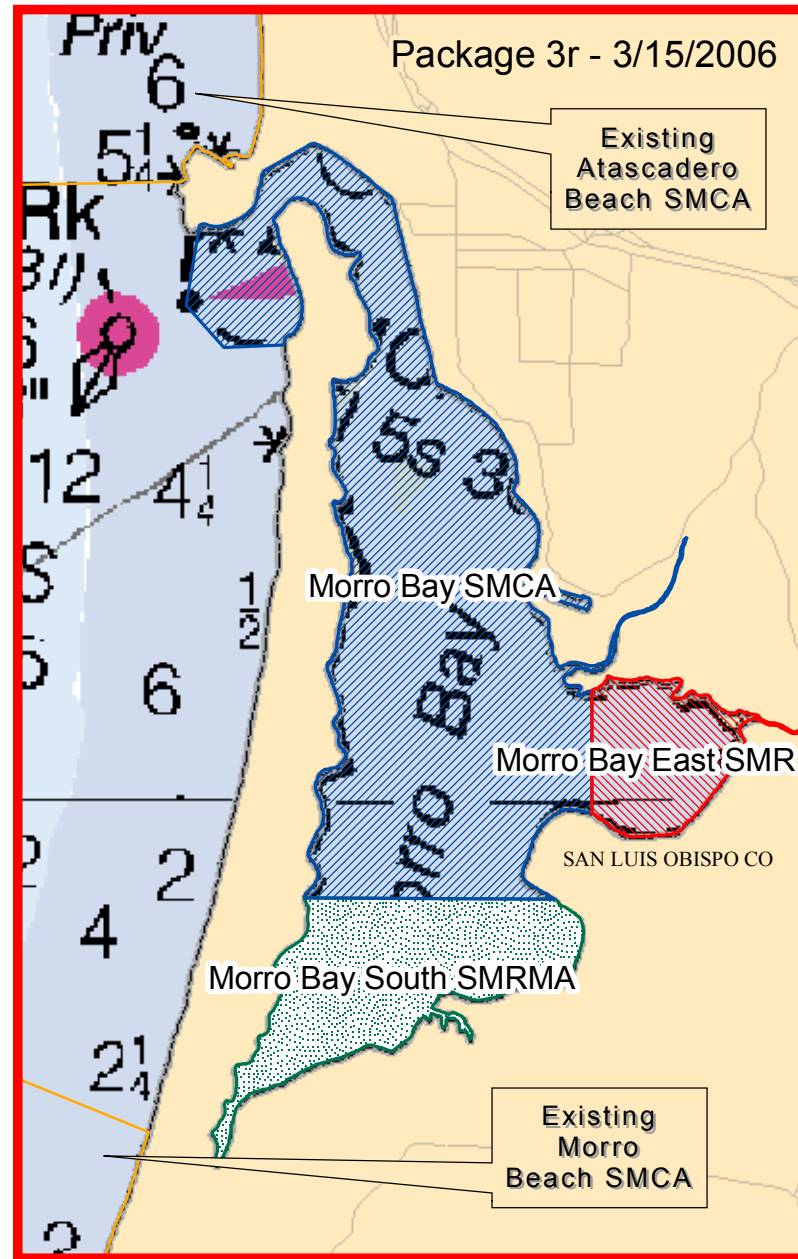
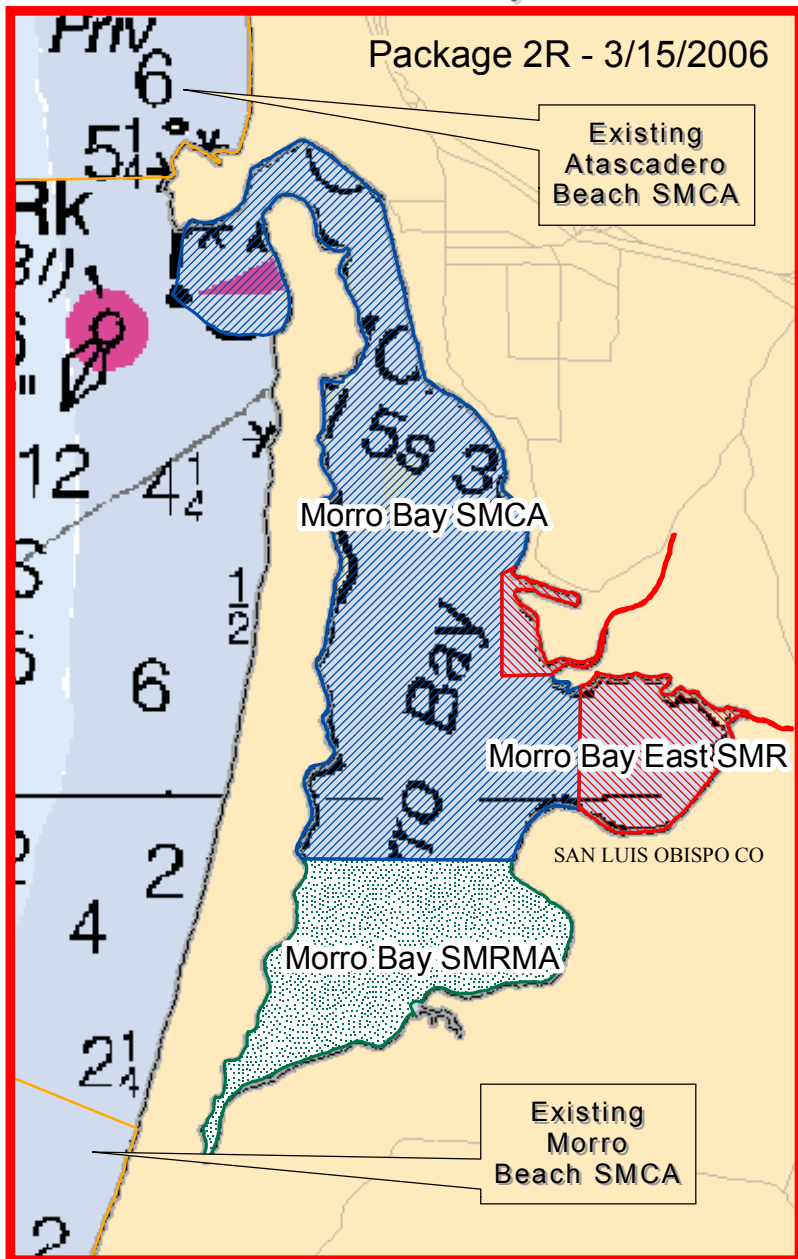
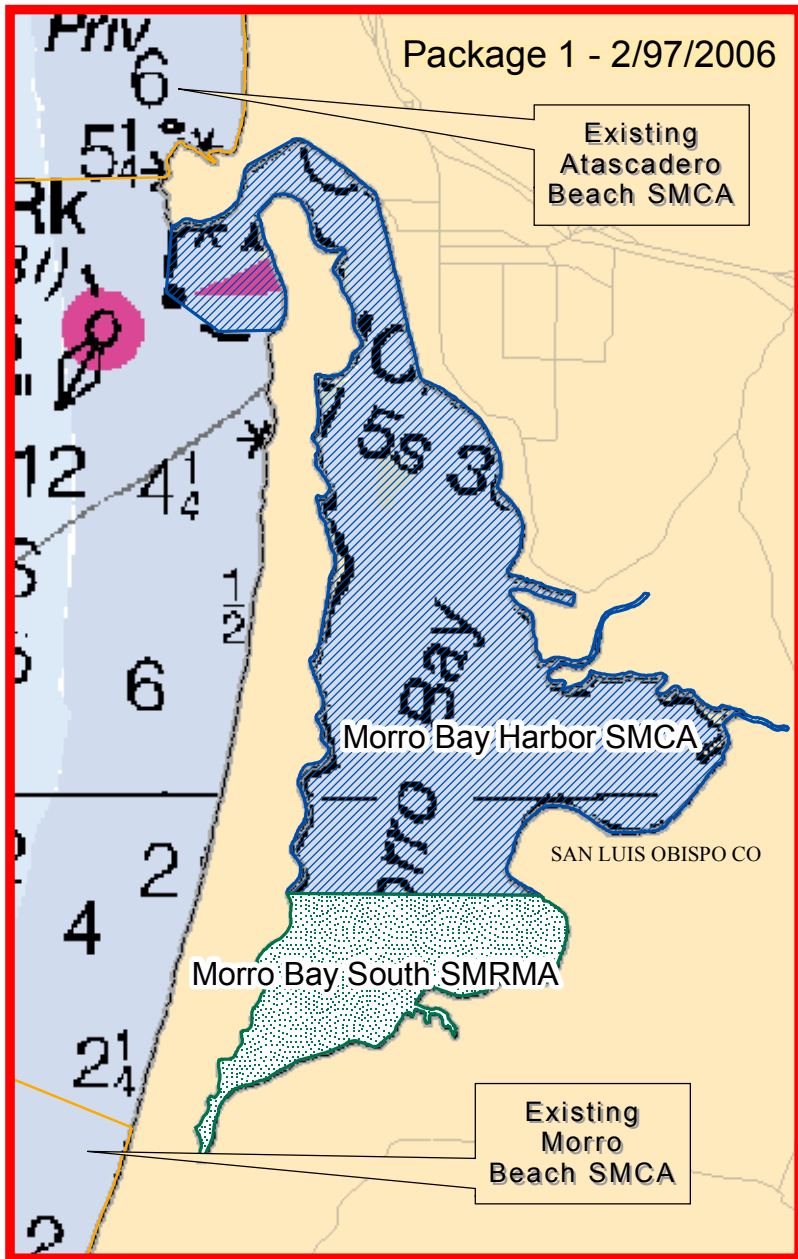
California Marine Life Protection Act Initiative Central Coast Project

**Side-by-Side Comparison of Proposed MPA
Packages 1, 2R and 3R (maps and proposed regulations)**

Subregion 6 Inset: Morro Bay

MLPA Central Coast Study Region: Subregion 6 Inset

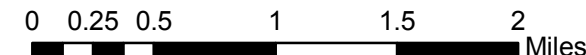
Morro Bay



Blue Ribbon Task Force Recommended MPA Packages 1, 2R and 3R

- State Marine Conservation Area
- State Marine Park
- State Marine Reserve
- State Marine Recreational Management Area
- Subregion Boundary
- Existing Marine Protected Area

Prepared by DFG
Marine Region GIS
3/31/2006



**California Marine Life Protection Act Initiative: Central Coast Project
Existing MPAs and Allowed/Disallowed Uses in Package 0 and Proposed MPAs and Allowed/Disallowed Uses in Packages 1, 2R and 3F
Subregion 6 Inset (Morro Bay)**

Package 0 (Existing MPAs)		Package 1 (2/9/06 version)		Package 2R (3/15/06)		Package 3R (3/15/06)	
MPA Name (<i>Level of Protection</i>)	Allowed/ Disallowed Uses	MPA Name (<i>Level of Protection</i>)	Allowed/ Disallowed Uses	MPA Name (<i>Level of Protection</i>)	Allowed/ Disallowed Uses	MPA Name (<i>Level of Protection</i>)	Allowed/ Disallowed Uses
		Morro Bay Harbor State Marine Conservation Area (SMCA Low)	Recreational fishing allowed. Commercial oyster farming and bait receiving allowed. No commercial fishing.	Morro Bay State Marine Conservation Area (SMCA Low)	No commercial take. Mariculture allowed.	Morro Bay State Marine Conservation Area (SMCA Low)	Allows mariculture and recreational fishing.
		Morro Bay South State Marine Recreational Management Area (SMCA-High)	No commercial or recreational fishing permitted, including no take of invertebrates.	Morro Bay State Marine Recreational Management Area (SMCA-High)	No take except for hunting of waterfowl.	Morro Bay South State Marine Recreational Management Area (SMCA-High)	No take.
				Morro Bay East State Marine Reserve (SMR)	No take.	Morro Bay East State Marine Reserve (SMR)	No take.

SMCA = state marine conservation area, SMP = state marine park, SMR = state marine reserve, SMRMA = state marine recreational management area