

Figure 1. Location codes for sites surveyed in 2005, 2006 and 2007 relative to the five State Marine Reserves, the one State Marine Conservation Area and locations of PISCO SCUBA survey sites.

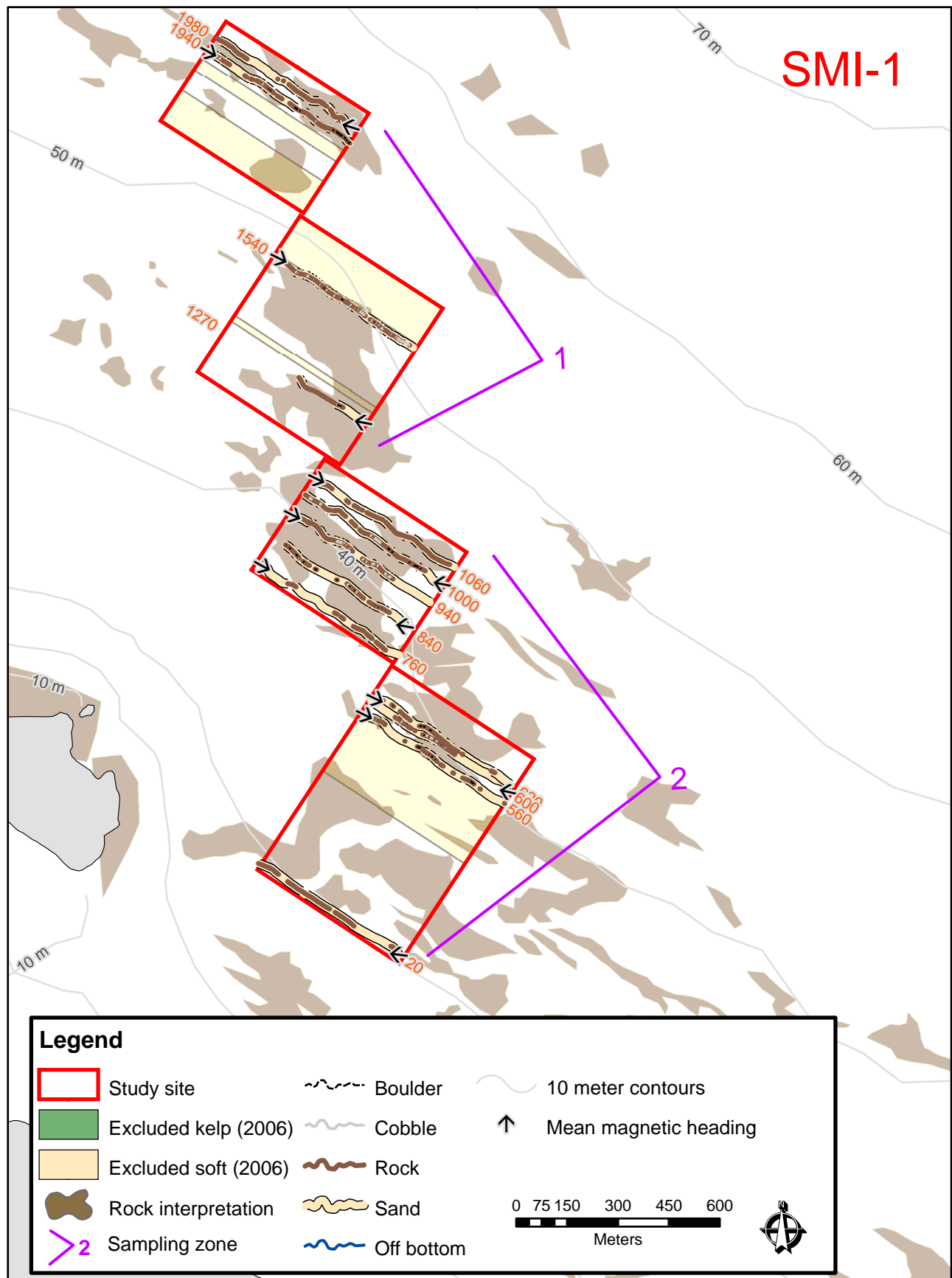


Figure 2. The Harris Point State Marine Reserve site boundary, sampling zones, and track lines for 2007. The amount of boulder, cobble, rock, and sand are estimates from ROV video. The background rock is interpreted from USGS sidescan sonar mapping.

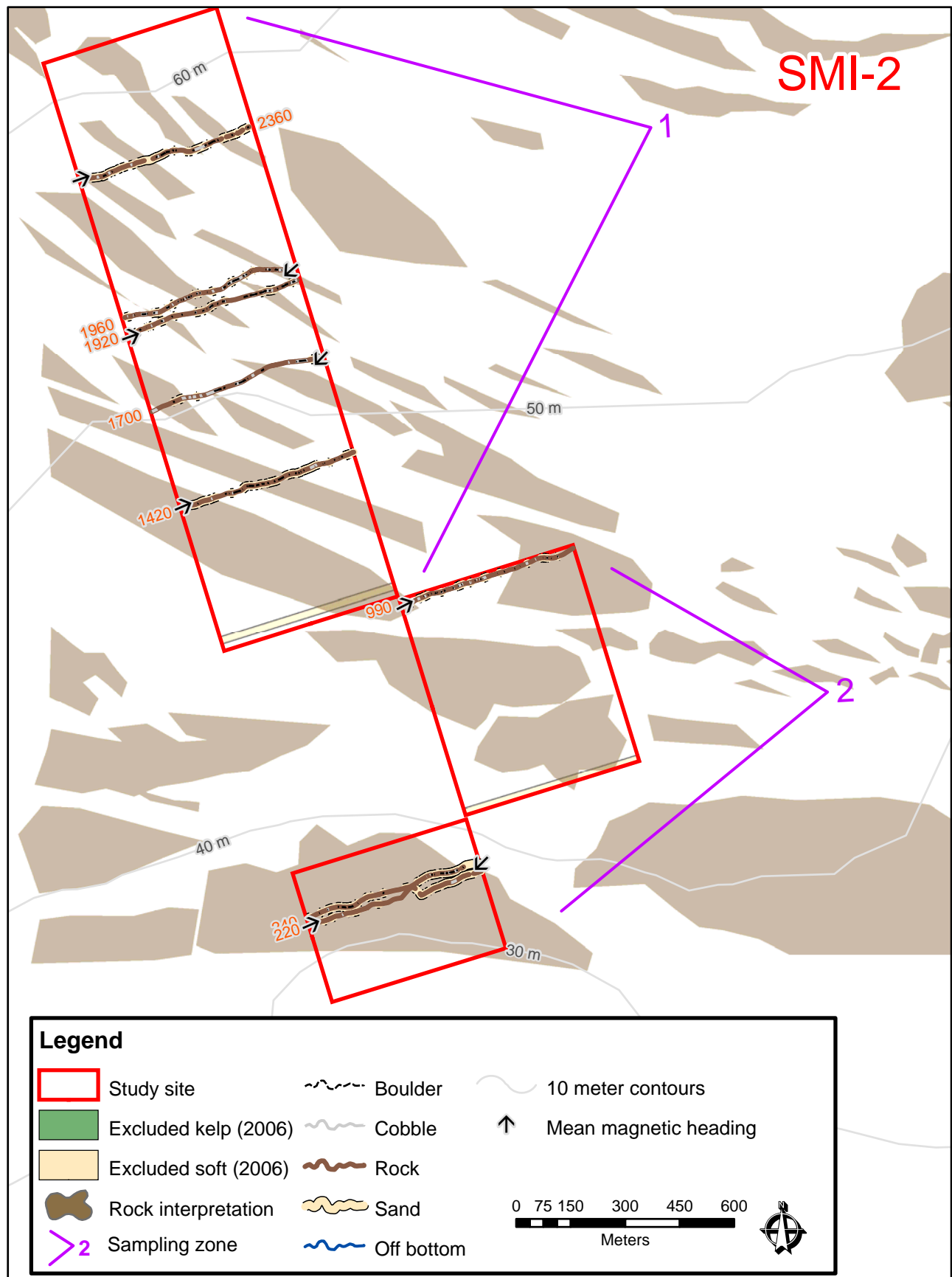


Figure 3. Castle Rock site boundary, sampling zones, and track lines for 2007. The amount of boulder, cobble, rock, and sand are estimates from ROV video. The background rock is interpreted from USGS sidescan sonar mapping.

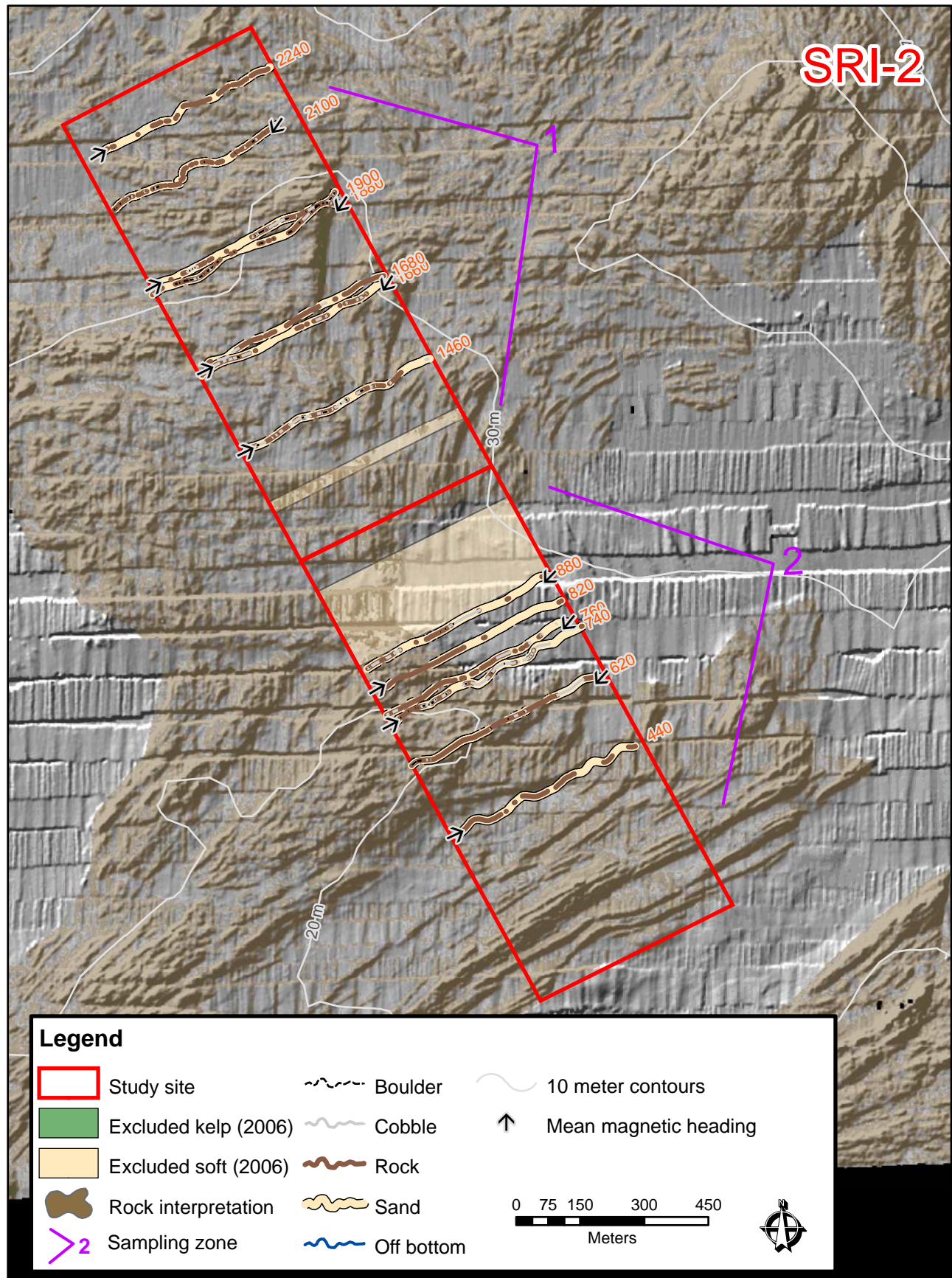


Figure 4. Carrington Point State Marine Reserve site boundary, sampling zones, and track lines for 2007. The amount of boulder, cobble, rock, and sand are estimates from ROV video. The background rock is interpreted from CSUMB multibeam sonar mapping.

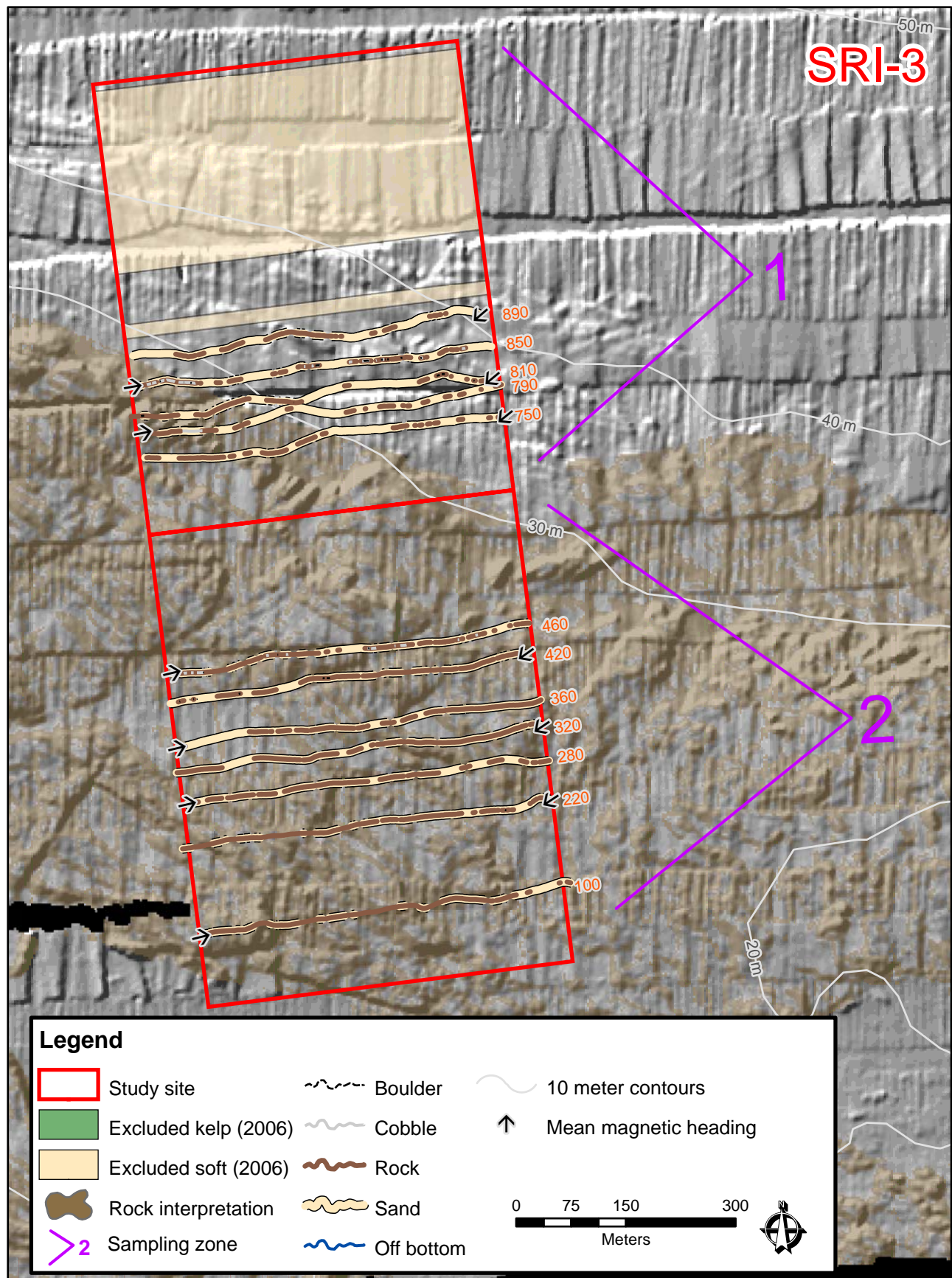


Figure 5. Rodes Reef site boundary, sampling zones, and track lines for 2007. The amount of boulder, cobble, rock, and sand are estimates from ROV video. The background rock is interpreted from CSUMB multibeam sonar mapping.

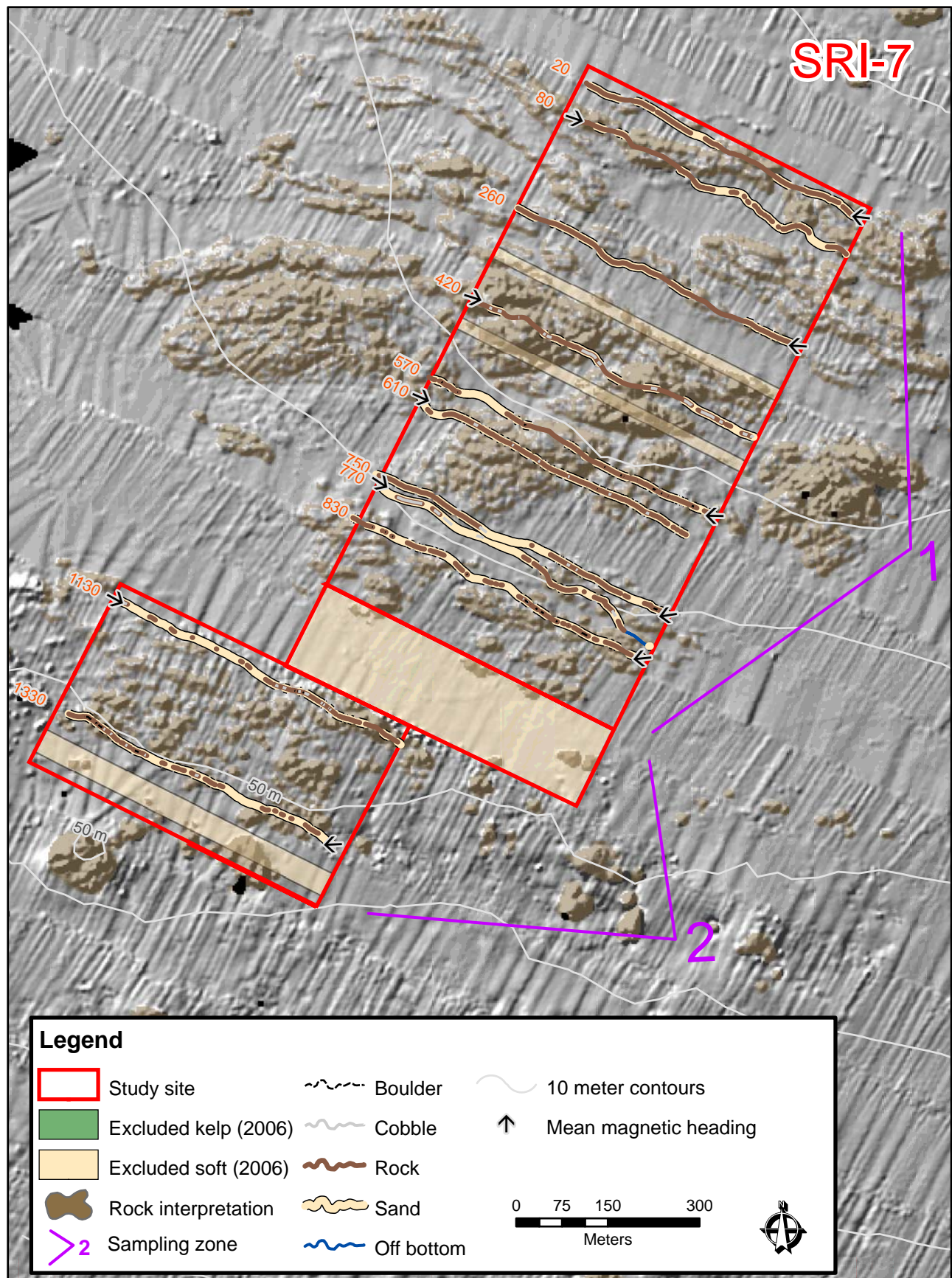


Figure 6. Cluster Point site boundary, sampling zones, and track lines for 2007. The amount of boulder, cobble, rock, and sand are estimates from ROV video. The background rock is interpreted from CSUMB multibeam sonar mapping.

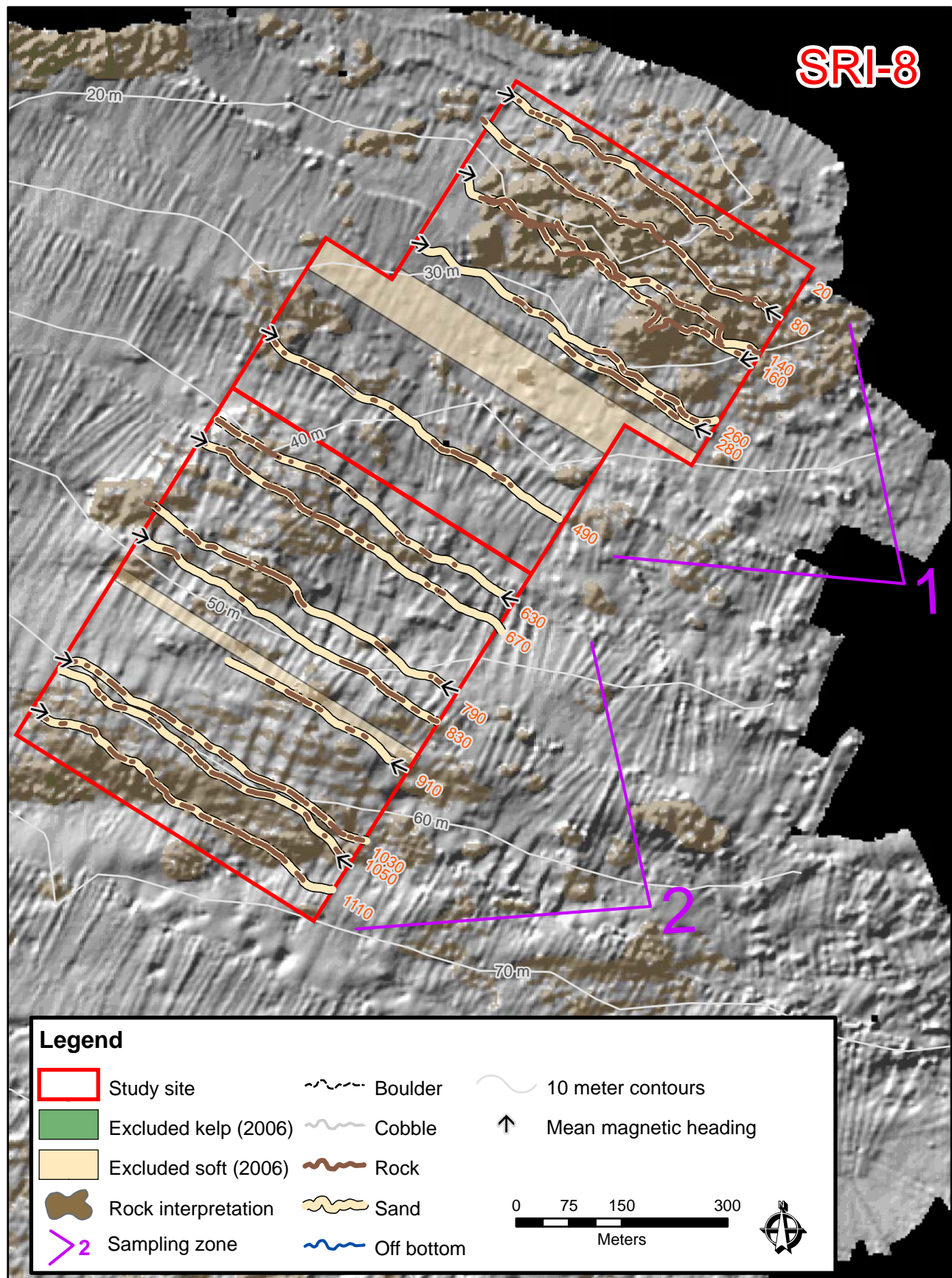


Figure 7. South Point State Marine Reserve site boundary, sampling zones, and track lines for 2007. The amount of boulder, cobble, rock, and sand are estimates from ROV video. The background rock is interpreted from CSUMB multibeam sonar mapping.

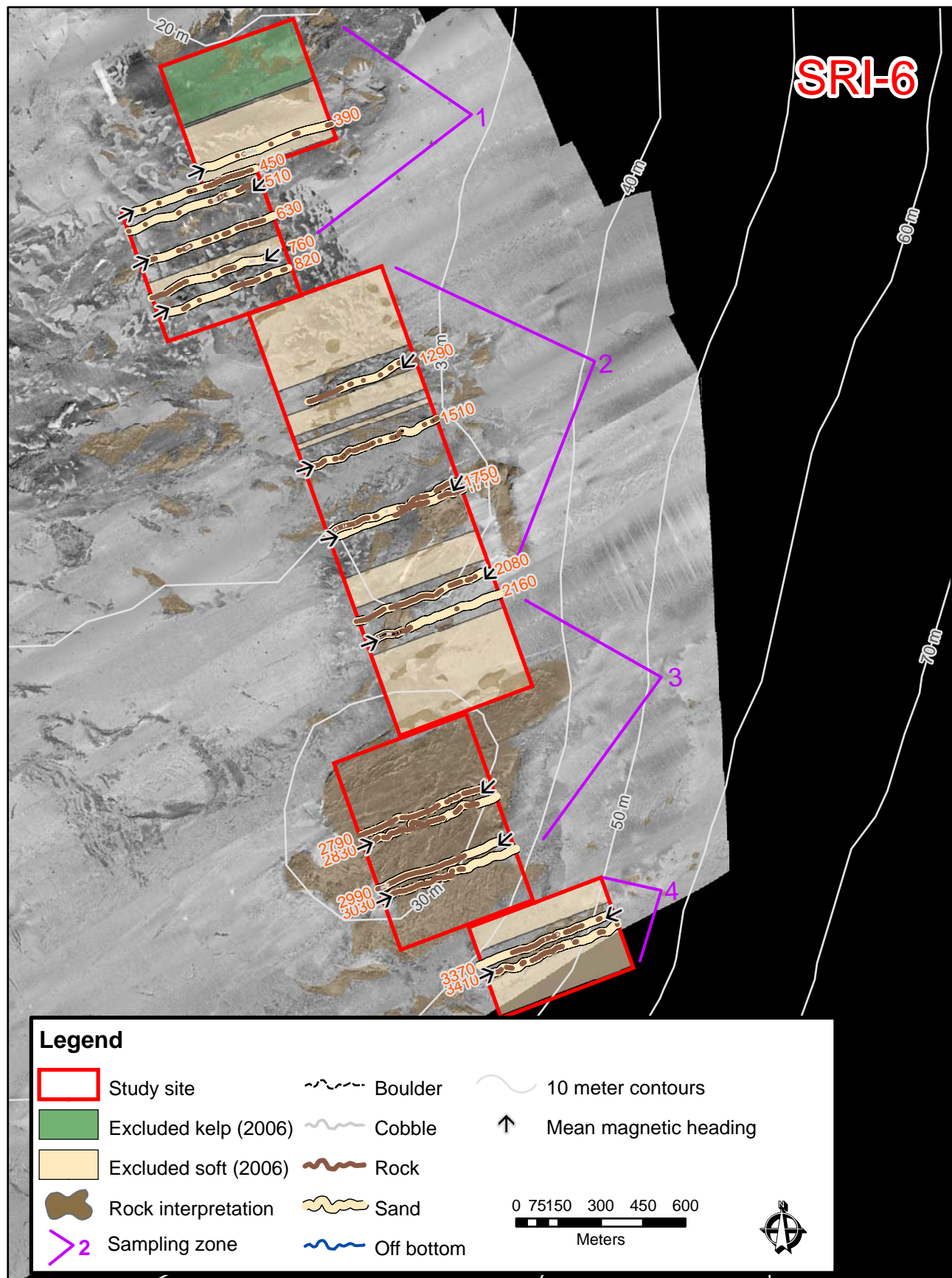


Figure 8. East Point site boundary, sampling zones, and track lines for 2007. The amount of boulder, cobble, rock, and sand are estimates from ROV video. The background rock is interpreted from USGS sidescan sonar mapping.

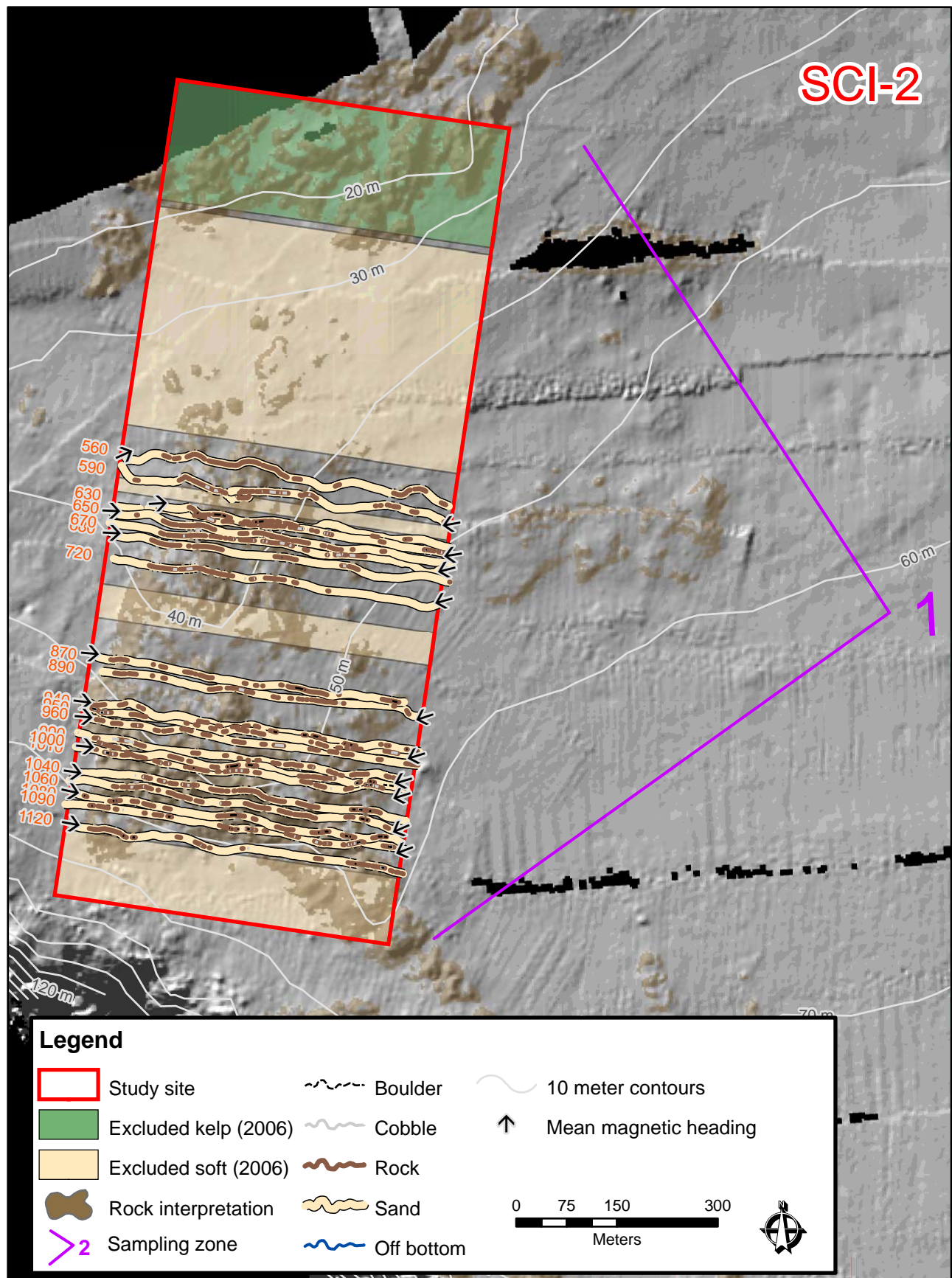


Figure 9. Gull Island State Marine Reserve site boundary, sampling zone, and track lines for 2007. The amount of boulder, cobble, rock, and sand are estimates from ROV video. The background rock is interpreted from CSUMB multibeam sonar mapping.

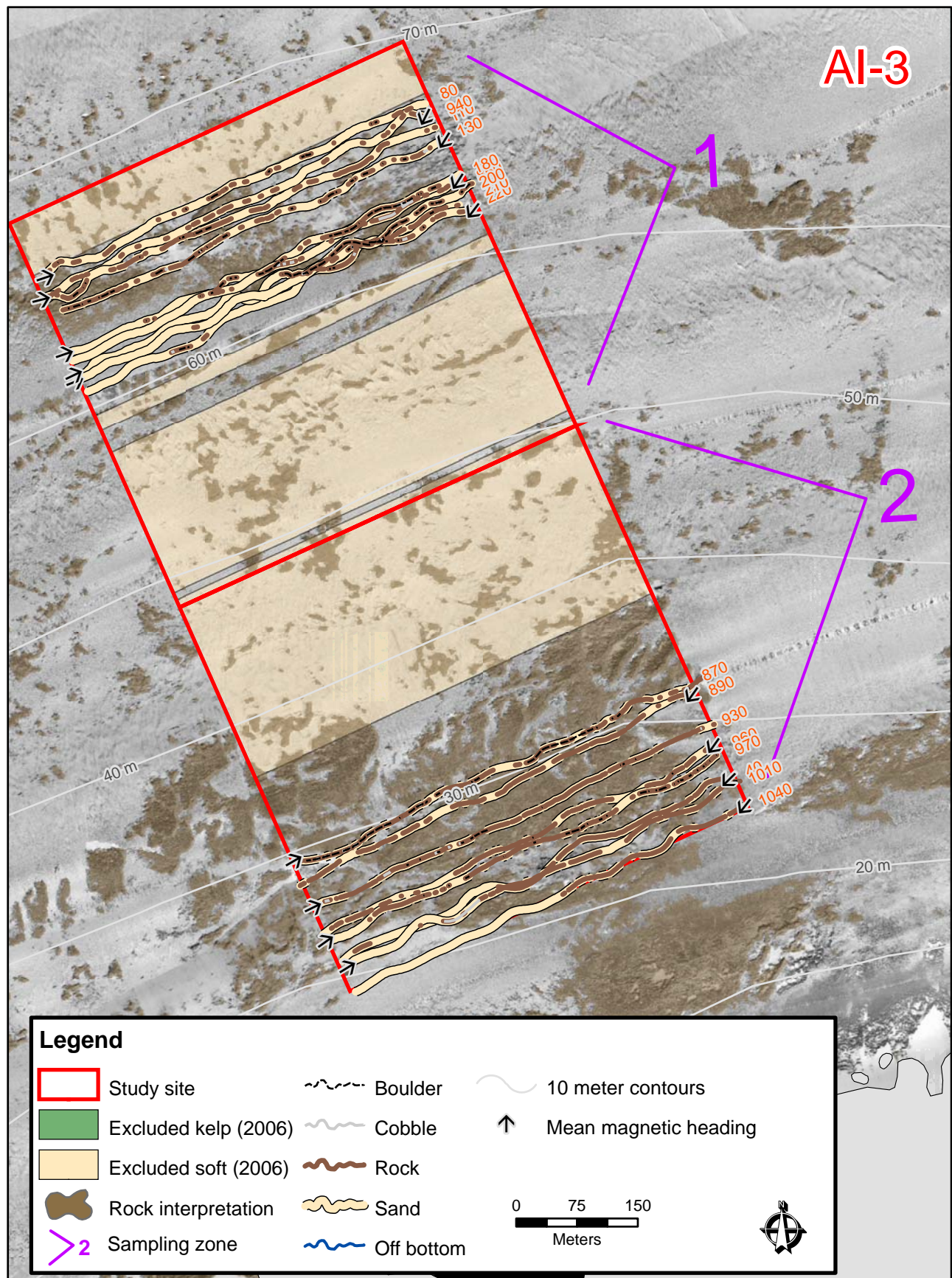


Figure 10. Anacapa Island State Marine Reserve site boundary, sampling zones, and track lines 2007. The amount of boulder, cobble, rock, and sand are estimates from ROV video. The background rock is interpreted from USGS sidescan sonar mapping.

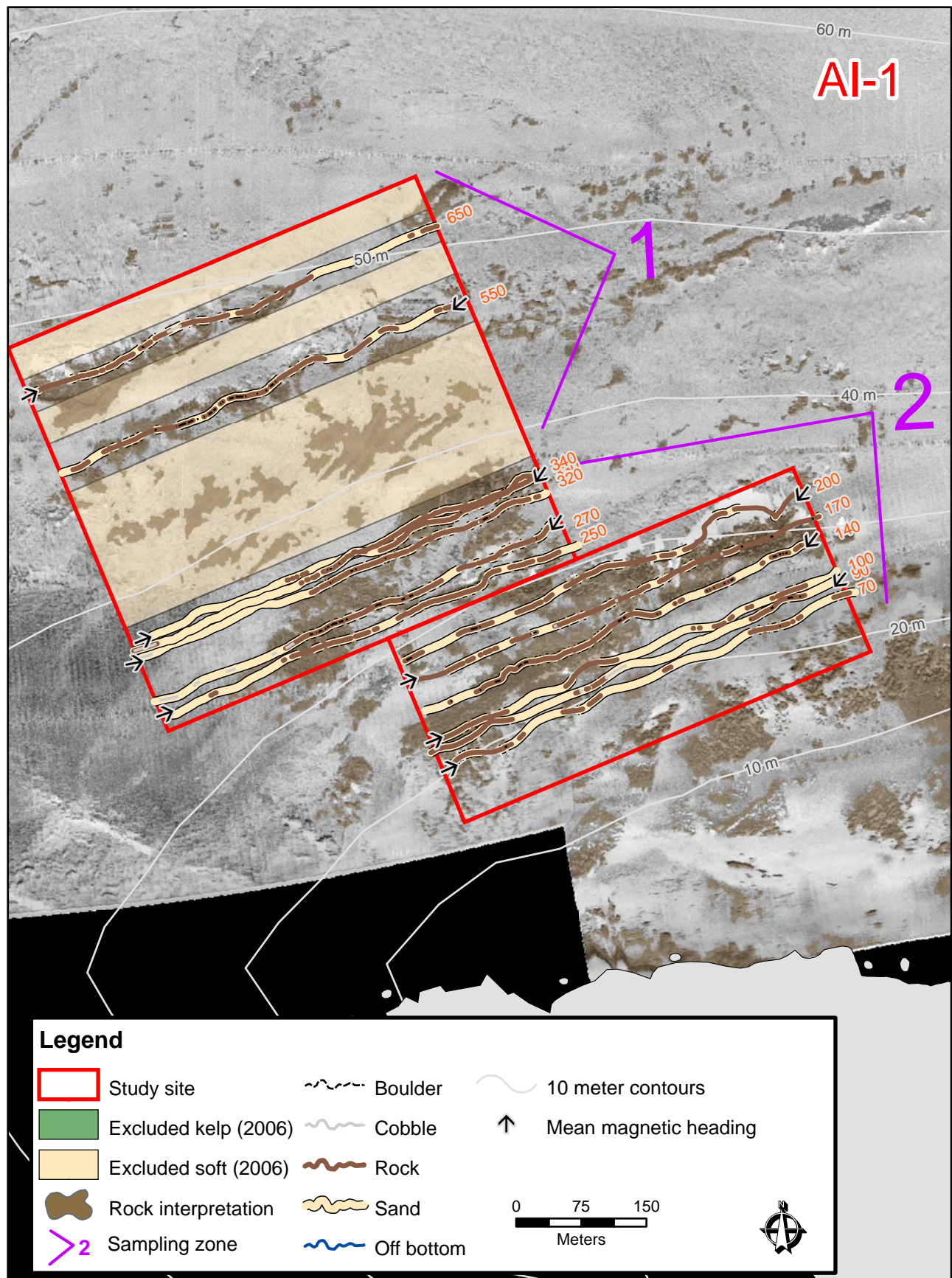


Figure 11. Anacapa Island State Marine Conservation Area site boundary, sampling zones, and track lines for 2007. The amount of boulder, cobble, rock, and sand are estimates from ROV video. The background rock is interpreted from USGS sidescan sonar mapping.

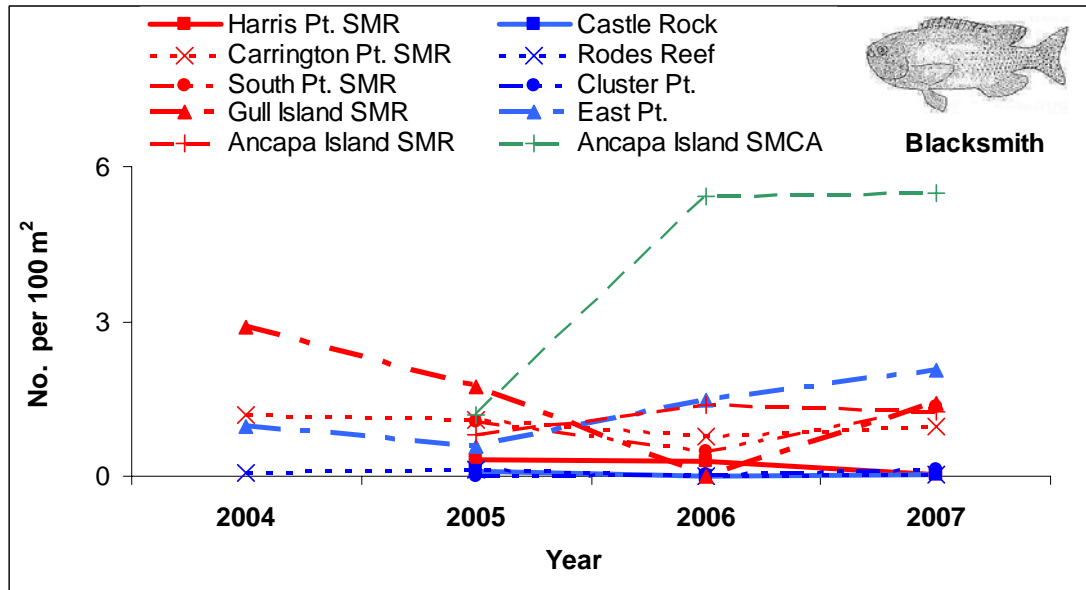


Figure 12. Density of blacksmith sampled from 2004 through 2007 by site. Only four of the ten sites were sampled in 2004. State Marine Reserves are **red**, fished **blue** and the State Marine Conservation Area **green**.

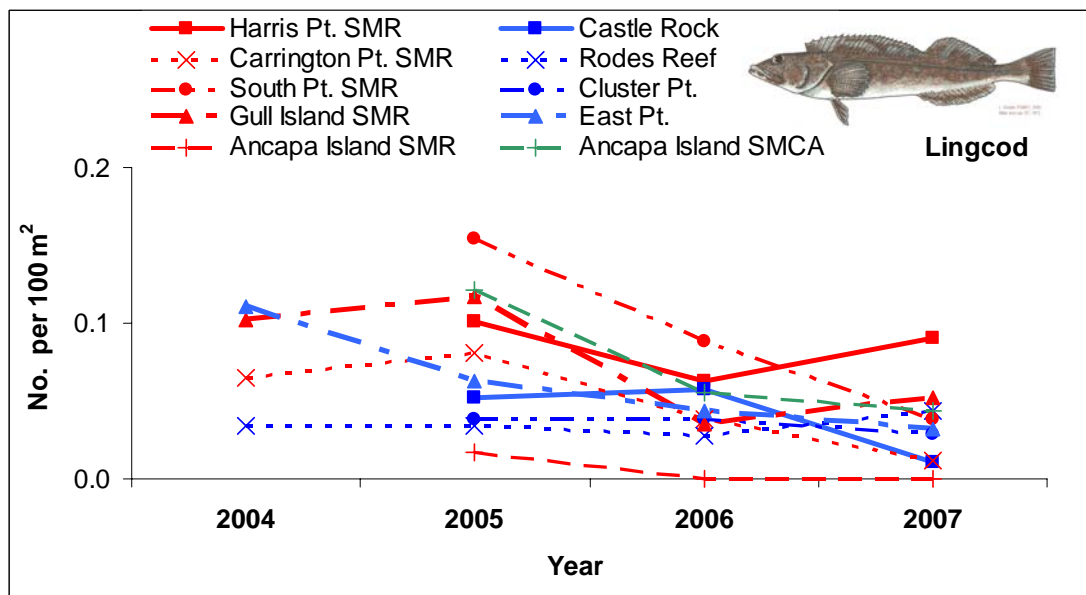


Figure 13. Density of lingcod sampled from 2004 through 2007 by site. Only four of the ten sites were sampled in 2004. State Marine Reserves are **red**, fished **blue** and the State Marine Conservation Area **green**.

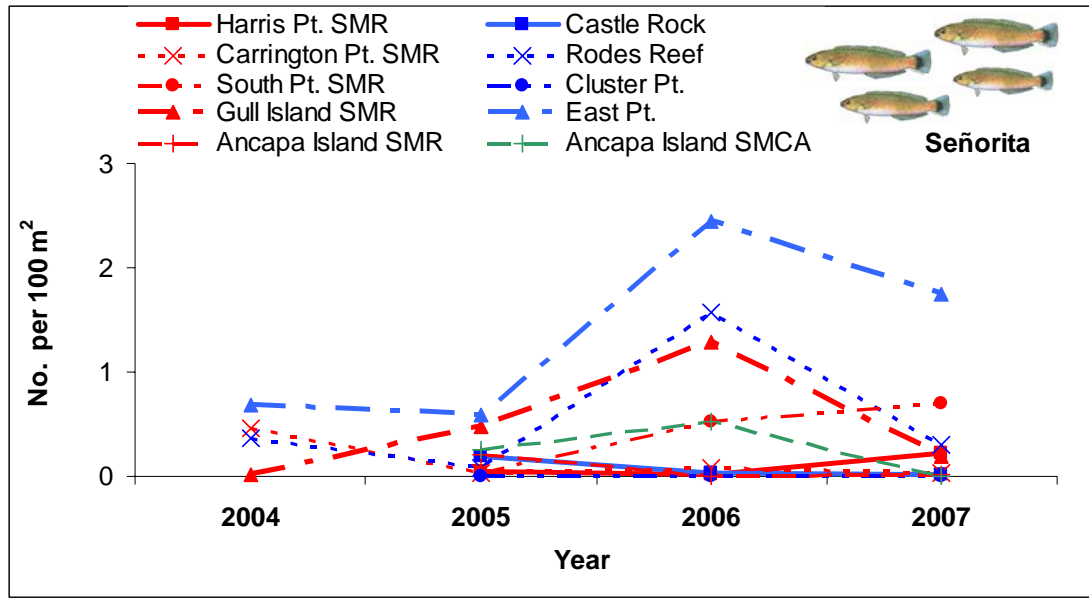


Figure 14. Density of señorita sampled from 2004 through 2007 by site. Only four of the ten sites were sampled in 2004. State Marine Reserves are **red**, fished **blue** and the State Marine Conservation Area **green**.

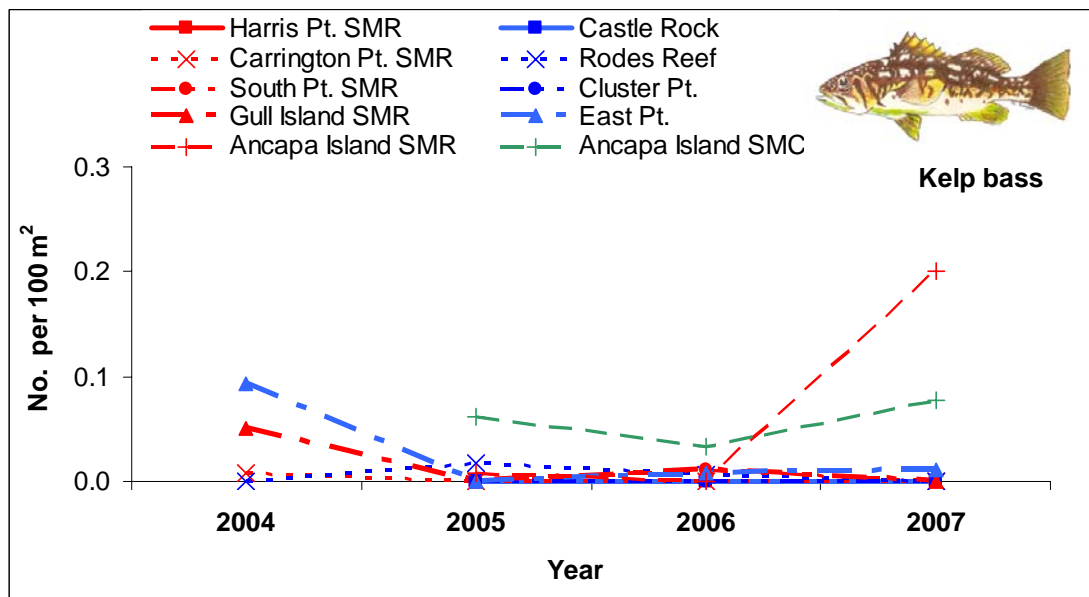


Figure 15. Density of kelp bass sampled from 2004 through 2007 by site. Only four of the ten sites were sampled in 2004. State Marine Reserves are **red**, fished **blue** and the State Marine Conservation Area **green**.

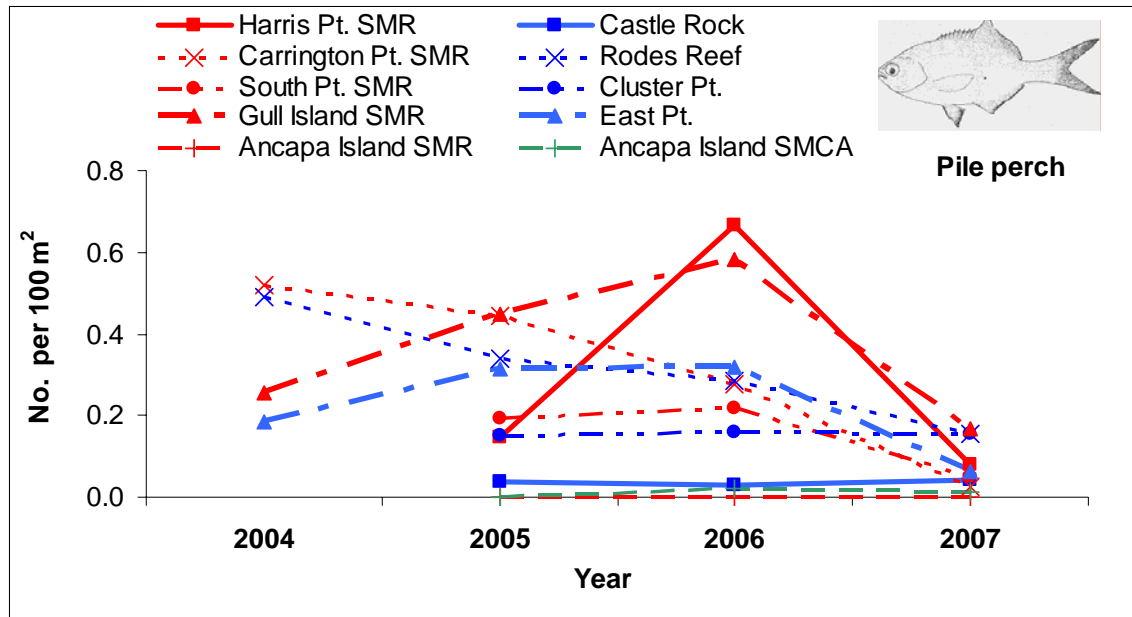


Figure 16. Density of pile perch sampled from 2004 through 2007 by site. Only four of the ten sites were sampled in 2004. State Marine Reserves are **red**, fished **blue** and the State Marine Conservation Area **green**.

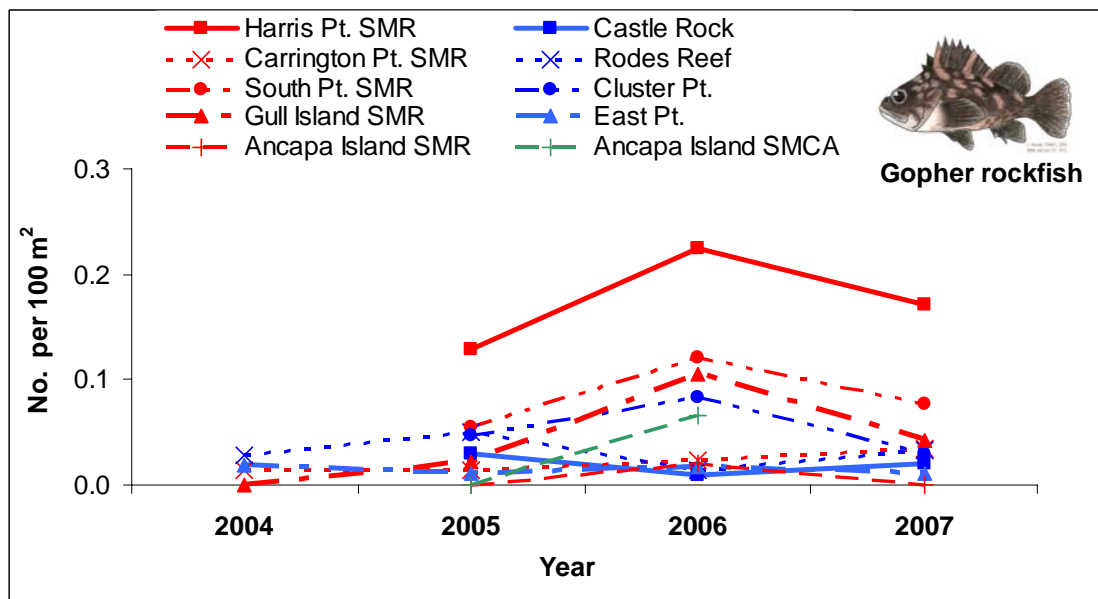


Figure 17. Density of gopher rockfish sampled from 2004 through 2007 by site. Only four of the ten sites were sampled in 2004. State Marine Reserves are **red**, fished **blue** and the State Marine Conservation Area **green**.

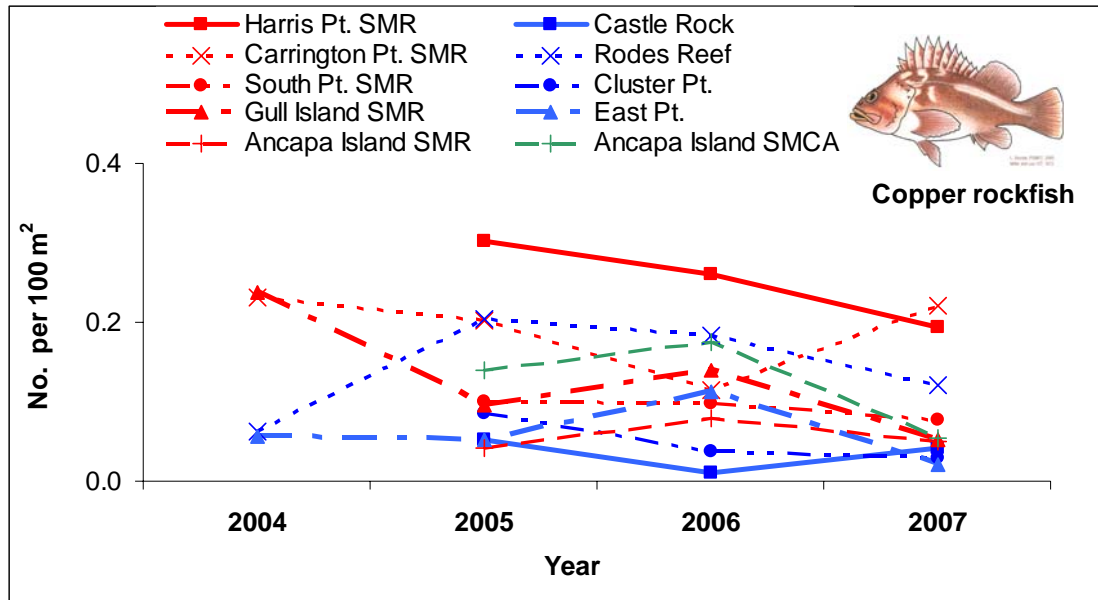


Figure 18. Density of copper rockfish sampled from 2004 through 2007 by site. Only four of the ten sites were sampled in 2004. State Marine Reserves are **red**, fished **blue** and the State Marine Conservation Area **green**.

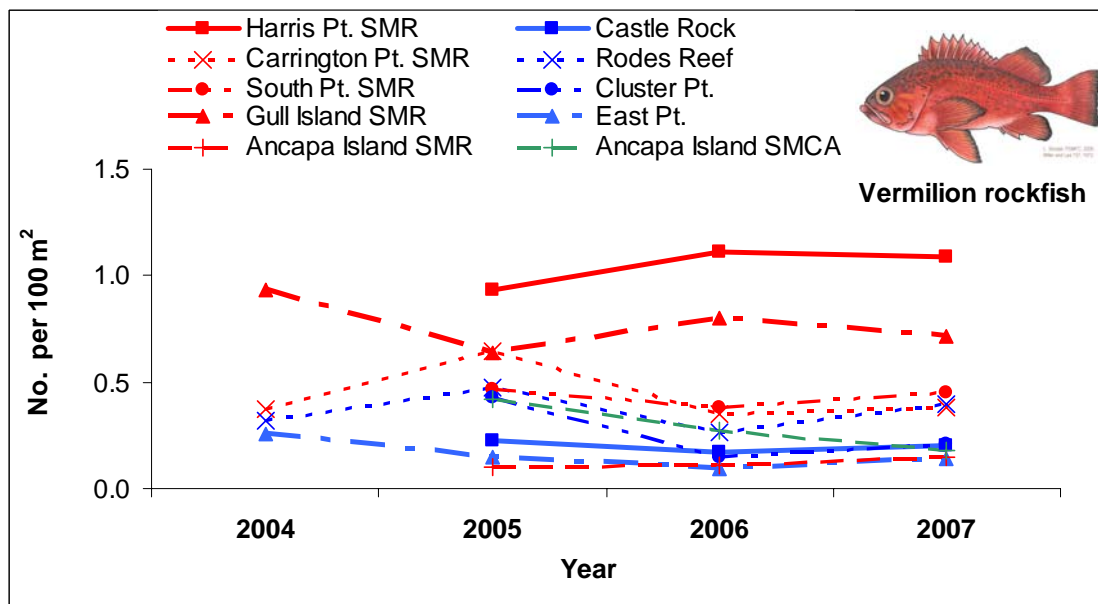


Figure 19. Density of vermilion rockfish sampled from 2004 through 2007 by site. Only four of the ten sites were sampled in 2004. State Marine Reserves are **red**, fished **blue** and the State Marine Conservation Area **green**.

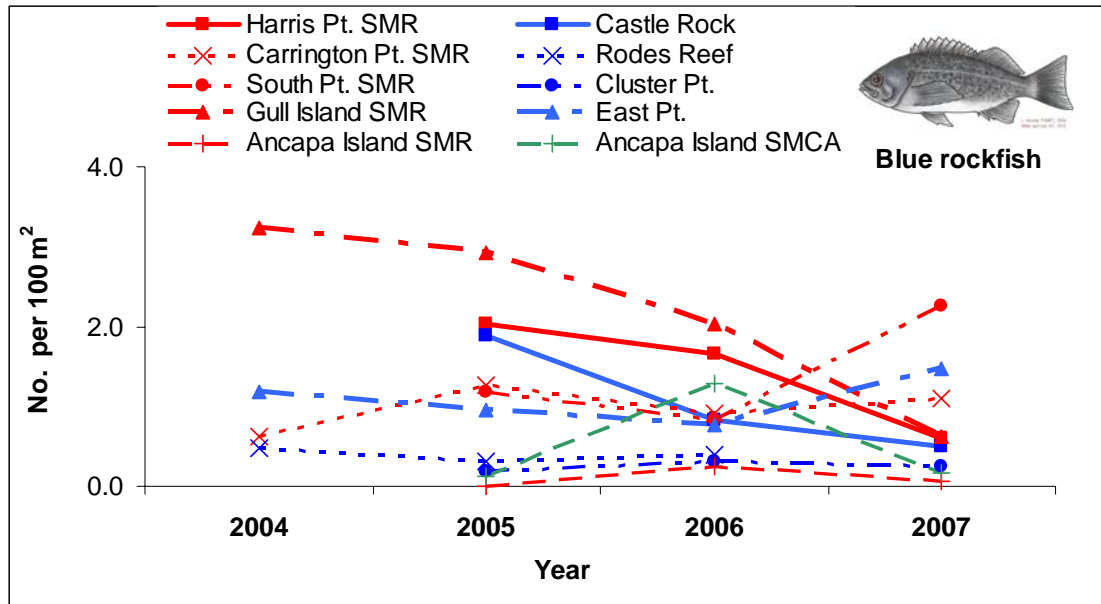


Figure 20. Density of blue rockfish sampled from 2004 through 2007 by site. Only four of the ten sites were sampled in 2004. State Marine Reserves are **red**, fished **blue** and the State Marine Conservation Area **green**.

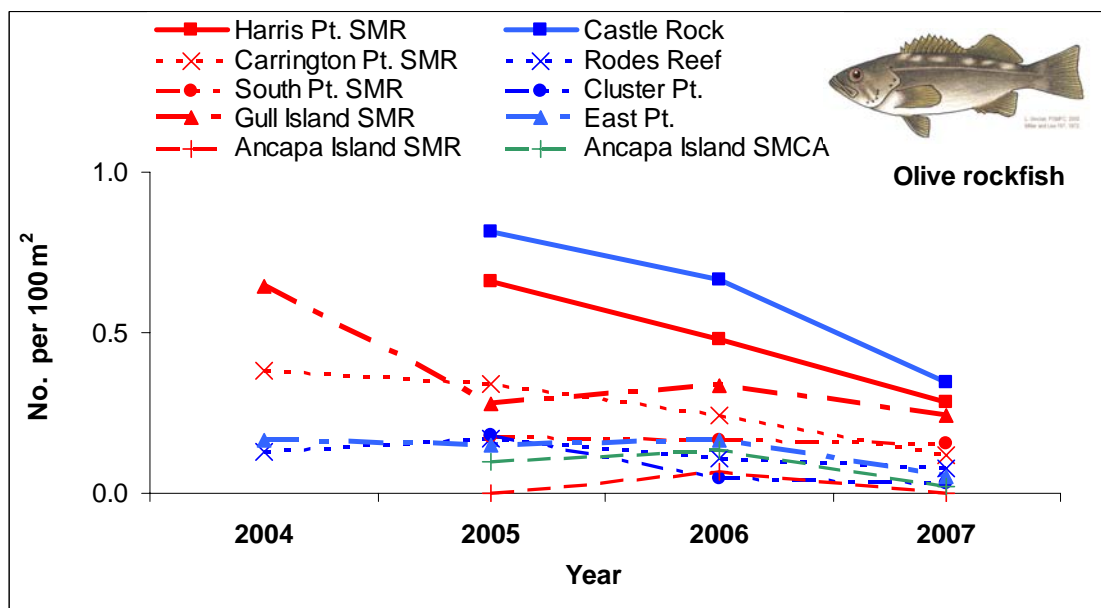


Figure 21. Density of olive rockfish sampled from 2004 through 2007 by site. Only four of the ten sites were sampled in 2004. State Marine Reserves are **red**, fished **blue** and the State Marine Conservation Area **green**.

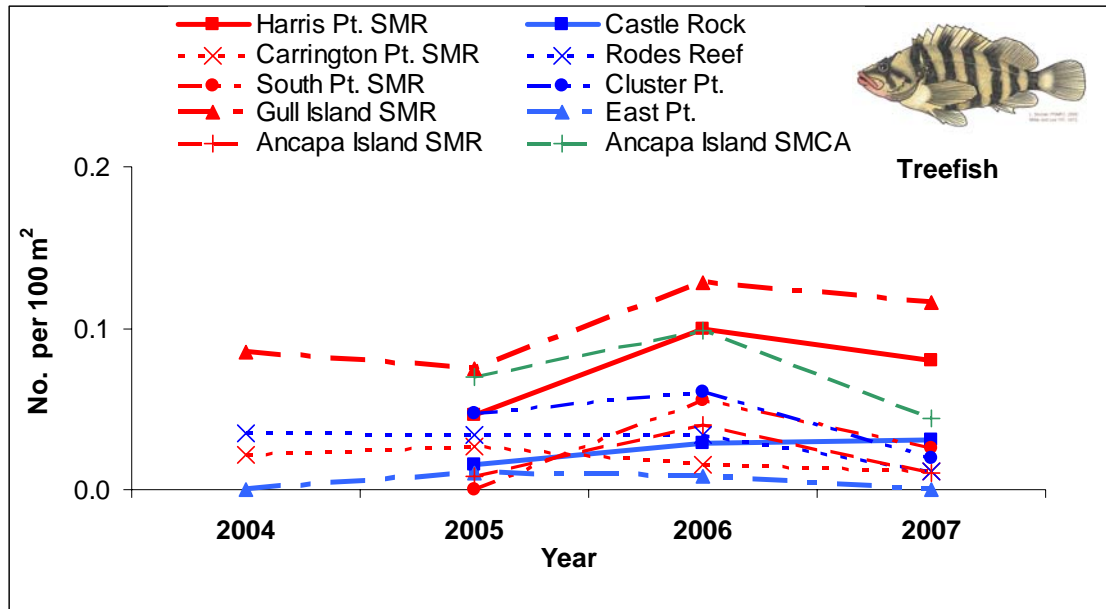


Figure 22. Density of treefish sampled from 2004 through 2007 by site. Only four of the ten sites were sampled in 2004. State Marine Reserves are **red**, fished **blue** and the State Marine Conservation Area **green**.

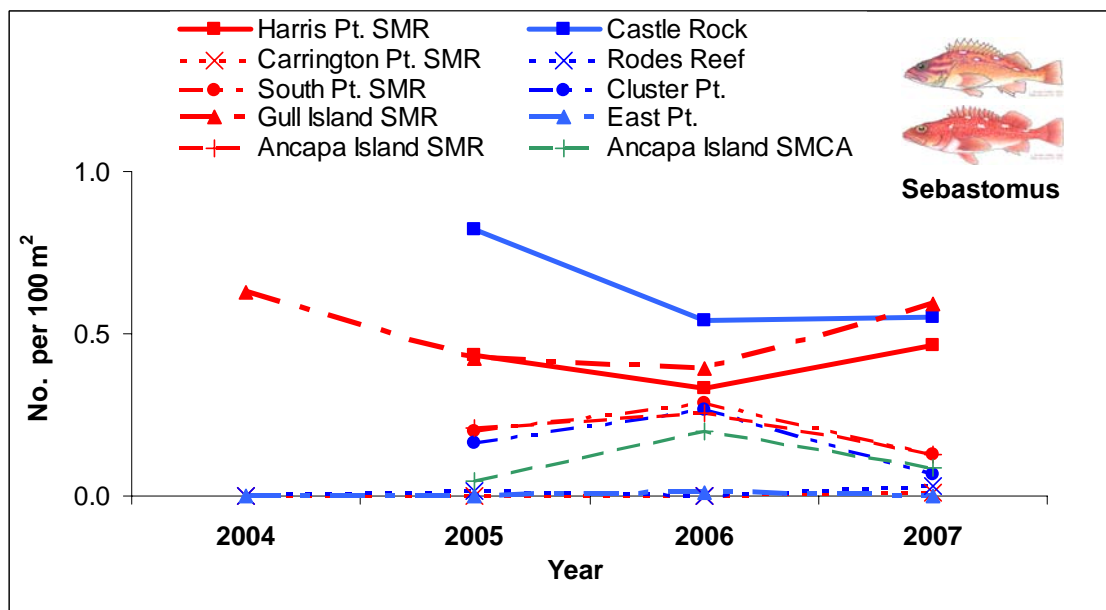


Figure 23. Density of sebastomus sampled from 2004 through 2007 by site. Only four of the ten sites were sampled in 2004. State Marine Reserves are **red**, fished **blue** and the State Marine Conservation Area **green**.

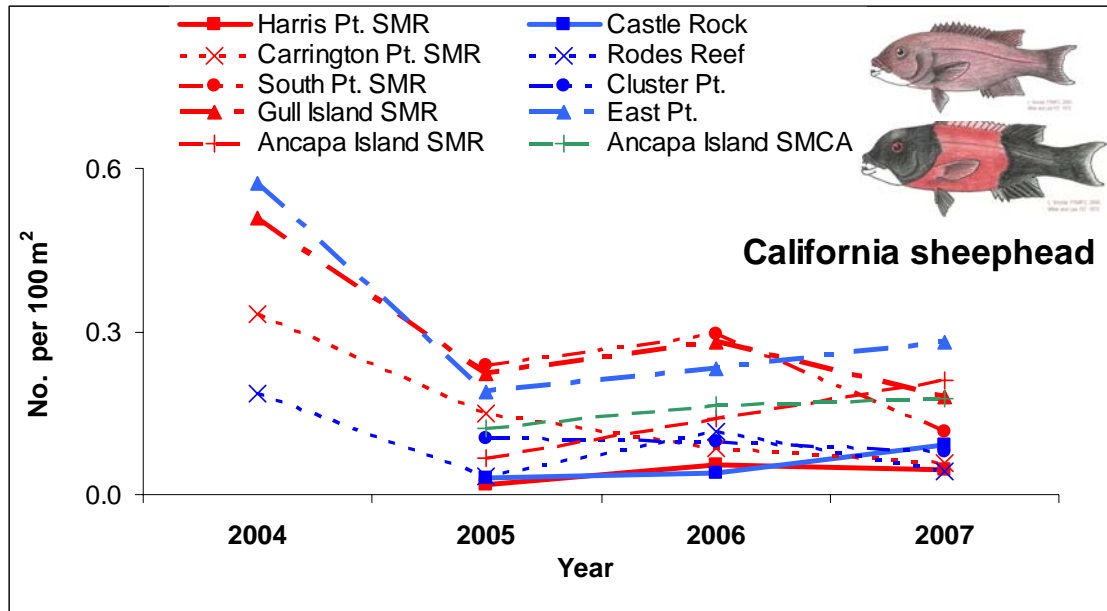


Figure 24. Density of California sheephead sampled from 2004 through 2007 by site. Only four of the ten sites were sampled in 2004. State Marine Reserves are **red**, fished **blue** and the State Marine Conservation Area **green**.

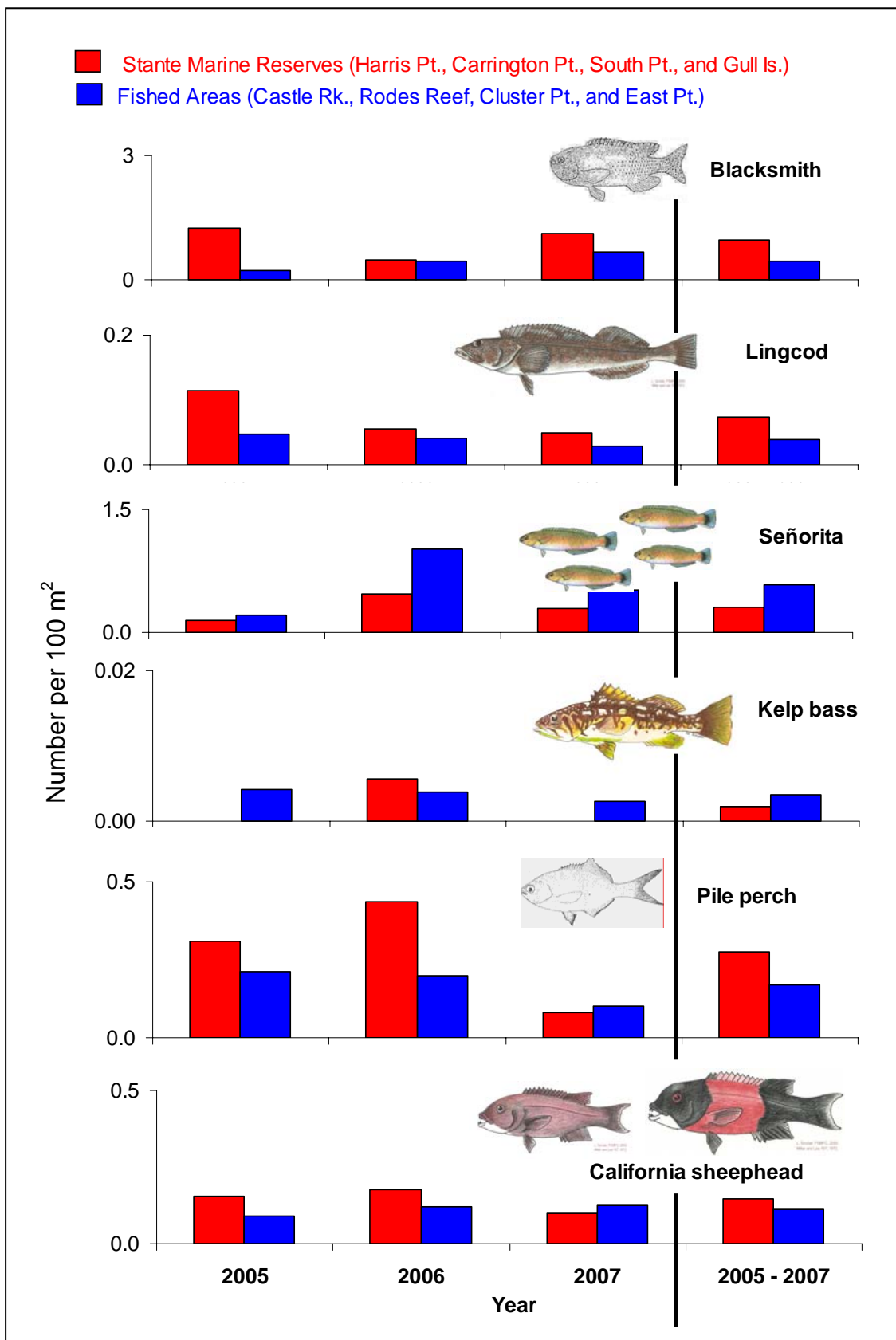


Figure 25. Average density of six finfish by year from 2005 through 2007 for combined sites. State Marine Reserves are red and fished areas in blue. Anacapa Island sites are not included.

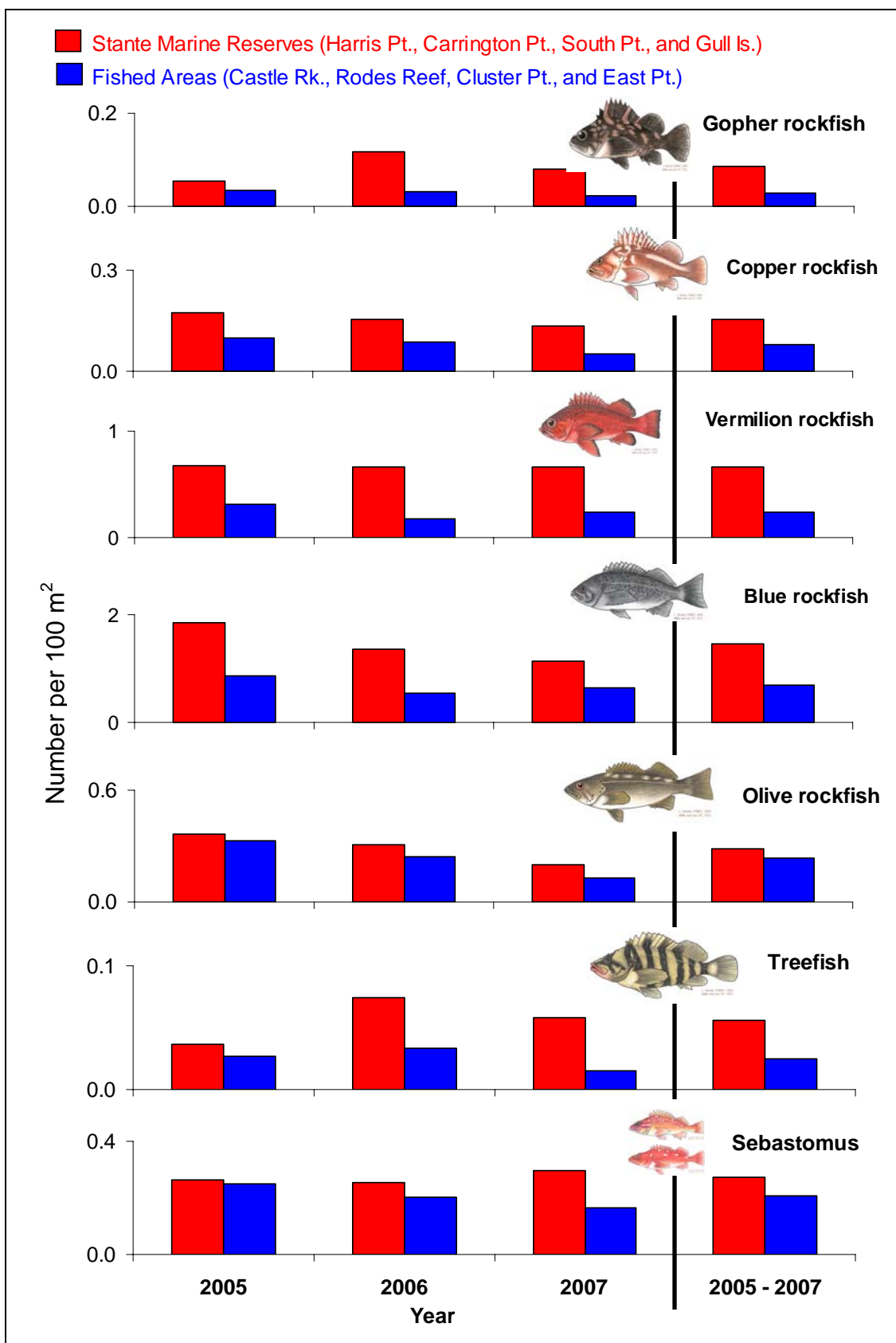


Figure 26. Average density of seven rockfish taxa by year from 2005 through 2007 for combined sites. State Marine Reserves are red and fished areas in blue. Anacapa Island sites are not included.