

PROGRESS REPORT

Endangered Plant Protection on Jepson Prairie Preserve

Contract No. FG-9508

Submitted to:

Ann Howald  
Endangered Plant Program  
Natural Heritage Division  
Department of Fish and Game

Submitted by:

Greg Elliott  
Principal Investigator  
The Nature Conservancy  
Jepson Prairie Preserve

July 15, 1991

**Task 2:** Jepson Prairie Preserve (Solano County) interpretive trail.

**Objective:** To increase public awareness of and protect vernal pool habitat containing populations of Tuctoria mucronata (E), Neostapfia colusana (E), Fritillaria liliaceae, Downingia humilis, and Legenere limosa. The Federally threatened Delta green ground beetle also occurs on this Preserve

**Subtask 1:** Replace and repair a half-mile section of fence (Deadline: July 15th) along both sides of Cook Lane. (TNC contribution: labor and \$400 of materials).

**Status:** The opportunity to have Cook Lane refenced at no cost (through a contract with the Jepson grazing lessee) allowed TNC to use the fencing for enclosure of a visitor picnic/interpretive area at the entrance to the Preserve (see Figures 1 & 2). The fenced enclosure will prevent sheep, which are integral to the grazing management of the Preserve, from entering the picnic area (see Figures 3 & 4). Interpretive signs were installed in a location where visitors will face a vista of Jepson Prairie and Olcott Lake (see Figures 5 & 6).

**Subtask 2:** Grade and gravel-fill a parking area. (TNC contribution: labor). (Deadline: July 15th)

**Status:** The parking area has been completed (see Figures 7 & 8). An area in front of the picnic/interpretive area was graded and covered with gravel to provide parking for about 10 to 15 vehicles.

**Subtask 3:** Prepare two interpretive panels for kiosk. (TNC contribution: labor and \$400 of materials). (Deadline: Sept. 30th)

**Status:** Planning underway.

**Subtask 4:** Post public control signs. (TNC contribution: labor). (Deadline: July 15th)

We are requesting an extension of the July 15th deadline for this task, as the public control signs will be part of the interpretive kiosk and trail that will be located across from the visitor picnic area. This portion of the project is scheduled for completion by September 30th.

**Subtask 5:** Prepare interpretive trail guide. (TNC contribution: labor). (Deadline: Sept. 30th)

**Status:** Planning underway.





Figure 1: Enclosed Visitor Area at Preserve Entrance



Figure 2: Picnic Area with view of Olcott Lake

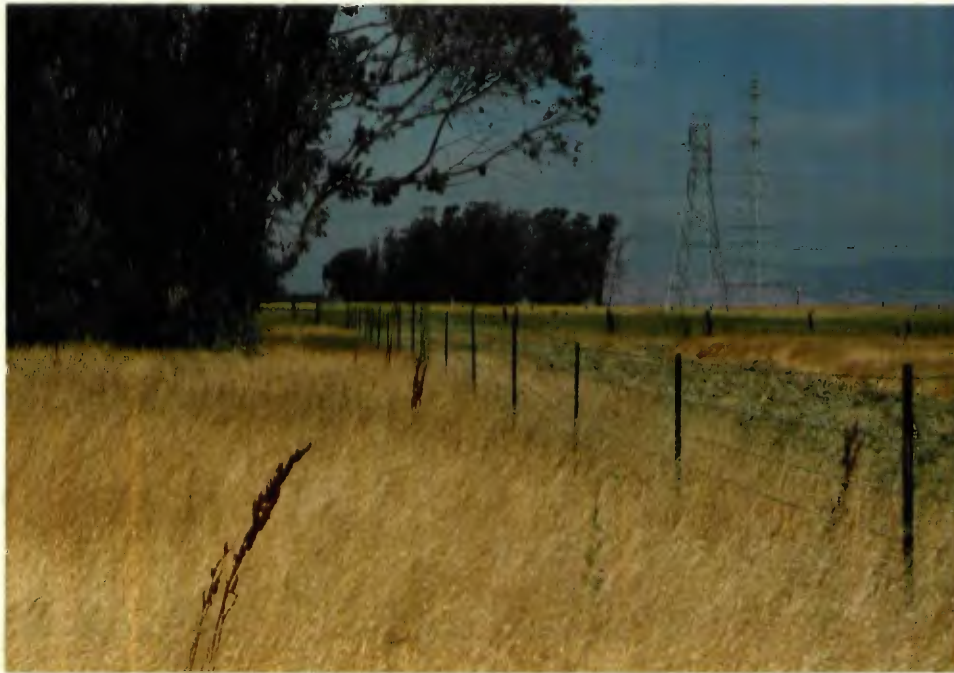


Figure 3: Fence Enclosing Visitor Area



Figure 4: Another angle of the new fence





Figure 5: Interpretive signs within visitor area



Figure 6: Interpretive signs face a vista of Jepson Prairie and Olcott Lake



Figure 7: New parking area in front of the enclosed visitor's space



Figure 8: Another angle of the parking area





Neostappia colusana:  
an endangered vernal  
pool species found in  
Olcott Lake (photo taken  
7/8/91)

