

FINAL REPORT
McGinty Mountain Habitat Protection Project

Contract No. FG-9508

Submitted to:

Ann Howald
Endangered Plant Program
Natural Heritage Division
Department of Fish and Game

Submitted by:

Cameron Barrows
Principal Investigator
The Nature Conservancy
Southern California Area

June 14, 1991

Final Report
McGinty Mountain Habitat Protection

Contract No. FG-9508

Scope of Work: Eliminate trespassing and control erosion that threatens populations of Acanthomintha ilicifolia (E), Nolina interrata (E), Senecio ganderi (R), Horkelia truncata, and Tetracossus dioicus.

Task 1: McGinty Mountain Preserve (San Diego County) fence and installation work.

All portions of the McGinty Mountain habitat protection project have been completed as of May 31, 1991. The protected habitat is now substantially more secure from off road vehicles, horses and erosion.

Subtask 1: Design and install metal gates, chain-link fencing and signs at four access points.

Gary Bell contracted for the construction of a heavy metal gate to secure the main access road to the site and installed the gate in April of 1991. Fences were installed lateral to the gate to prevent vehicles from simply skirting around the gate, creating increased erosion and continued access. Appropriate signs were placed at the gate to inform the public of access restrictions.

Subtask 2: Fence access area to native grassland site and post signs.

Gary Bell, with interns, fenced access to the isolated, but rich, native needlegrass prairie. This grassland is dominated by Stipa diegoensis with Stipa pulchra as the co-dominant. It is located on expansive clay soils on the south face of the mountain. Within the grassland are typical Stipa prairie species such as Allium haematochiton, and Calochortus splendens. Also inside the fenced area, at the margin of the coastal sage scrub, is a population of about 20 Acanthomintha ilicifolia.

This site had been heavily damaged by horses in past years, but the fencing, plus appropriate signing should now eliminate that threat.

Subtask 3: Install water bars for erosion control throughout the trail system.

Gary Bell used CCC crews to install a series of water bars across the main access trail to control water erosion. The water bars on the access trail are made of native rock collected along an old roadside on top of McGinty Mountain. The water bars are dug 12"-18" into the ground, and constructed at a slight angle into the slope to direct water off the trail. The bars are built every 20' to 100' depending upon the slope.

This system of water bars was completed before the torrential rains of February 27-28, 1991 and worked perfectly. There was almost no damage to the trail despite the 7+ inch downpour.



**Installation of metal gates at access points
of McGinty Mountain Preserve**



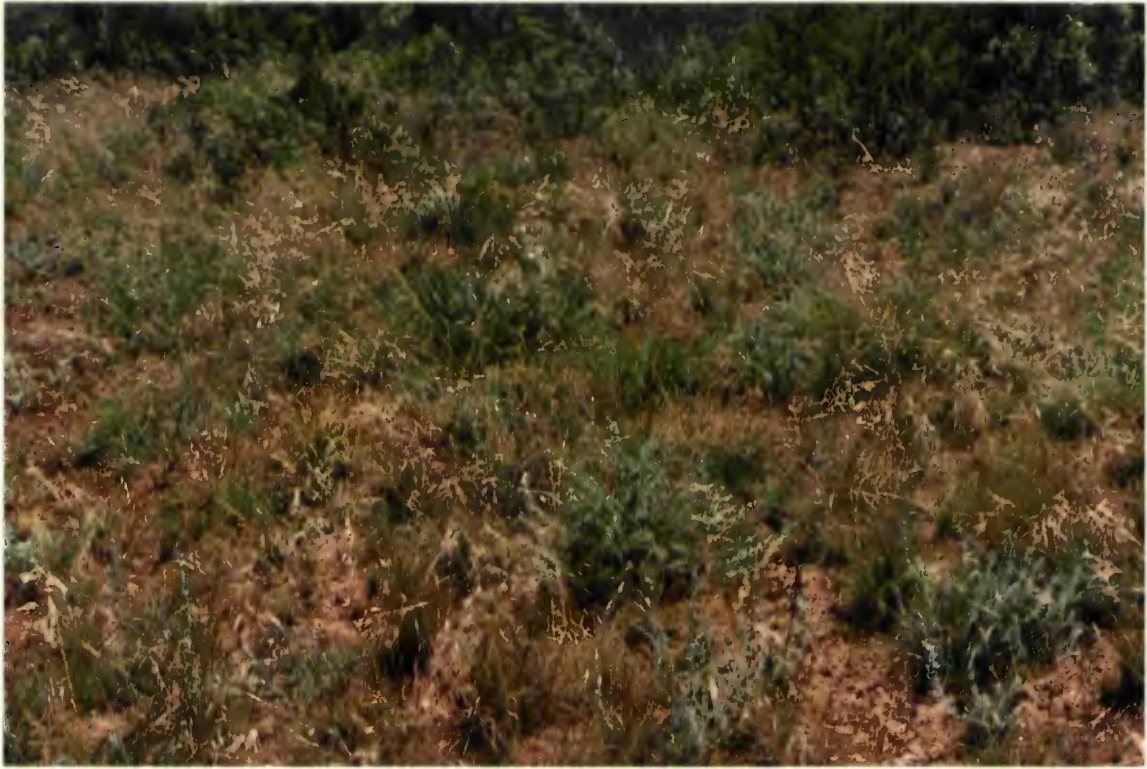
Access point closure gate, fence and sign



Trail sign through Diegan grassland



Native grassland closure fence and sign



Stipa diegoensis bunches



Stipa diegoensis bunch



Stipa pulchra seed head (top)
Stipa diegoensis seed head (bottom)



Acanthomintha ilicifolia



**Water bars for erosion control along the trail system
at McGinty Mountain Preserve**