

File: E.F. Scott River

State of California

The Resources Agency

## Memorandum

REF 90611

Date: December 18, 2001

To : Bob McAllister

From : Department of Fish and Game - Klamath Watershed Biologist

Subject: Additional Adult Coho Sightings in Scott River Sub-basin

The purpose of this memo is to provide an update on additional recent sightings of adult coho. These observations were made by Mr. Bob McAllister (Senior Fishery Biologist Supervisor, Mr. Ron Dotson, Habitat Supervisor of the California Department of Fish and Game's Yreka Stream Improvement Center, and myself.

### East Fork of the Scott River:

On the morning of Friday, 12/14/01, the three of us drove to the East Fork of the Scott River to confirm reported coho sightings by Mr. Jay Phelps. These fish were reported to be at the mouth of Kangaroo Creek about one-half mile upstream of the Phelps property where adult coho were observed spawning ten days earlier. The landowner, Ms. Michell Fashing, who provided access permission by telephone, was physically contacted when we arrived at her residence. She guided us part way to the area where the coho were last seen and informed us of where her property boundaries lay. As soon as we got to the East Fork of the Scott River, we immediately observed three adult coho salmon holding near a redd site. In all, we counted 17 adult salmon and 12 partially or totally completed redds along the extent of Ms. Fashing's property (see photo next page). These fish were confirmed to be coho based on color, spotting and a white gum lining.

A suspected coho redd was noted on the East Fork of the Scott River beneath the Masterson Road bridge located approximately 1/4 mile upstream of the mouth of Kangaroo Creek. The survey area was located in Township 40 N, Range 7W in sections 7 & 18 (mdb&m). [See attached location map].

The air temperature was 38°F and the water temperature was 41°F. Total dissolved solids (TDS) equaled 170 micro-siemens.

### Sugar Creek:

After surveying the East Fork of the Scott River site, we decided to stop at a few of the State Hwy 3 bridge crossings on our return to Yreka. We stopped first at the Sugar Creek bridge crossing and observed three adult coho salmon spawning in Sugar Creek immediately upstream of the bridge. A photograph was taken of these fish.



**Photograph** - A pair of adult coho salmon spawning in the East Fork of the Scott River near the mouth of Kangaroo Creek located approximately 1/4 mile downstream of the upper Masterson Road Bridge crossing (12/14/01).

French Creek :

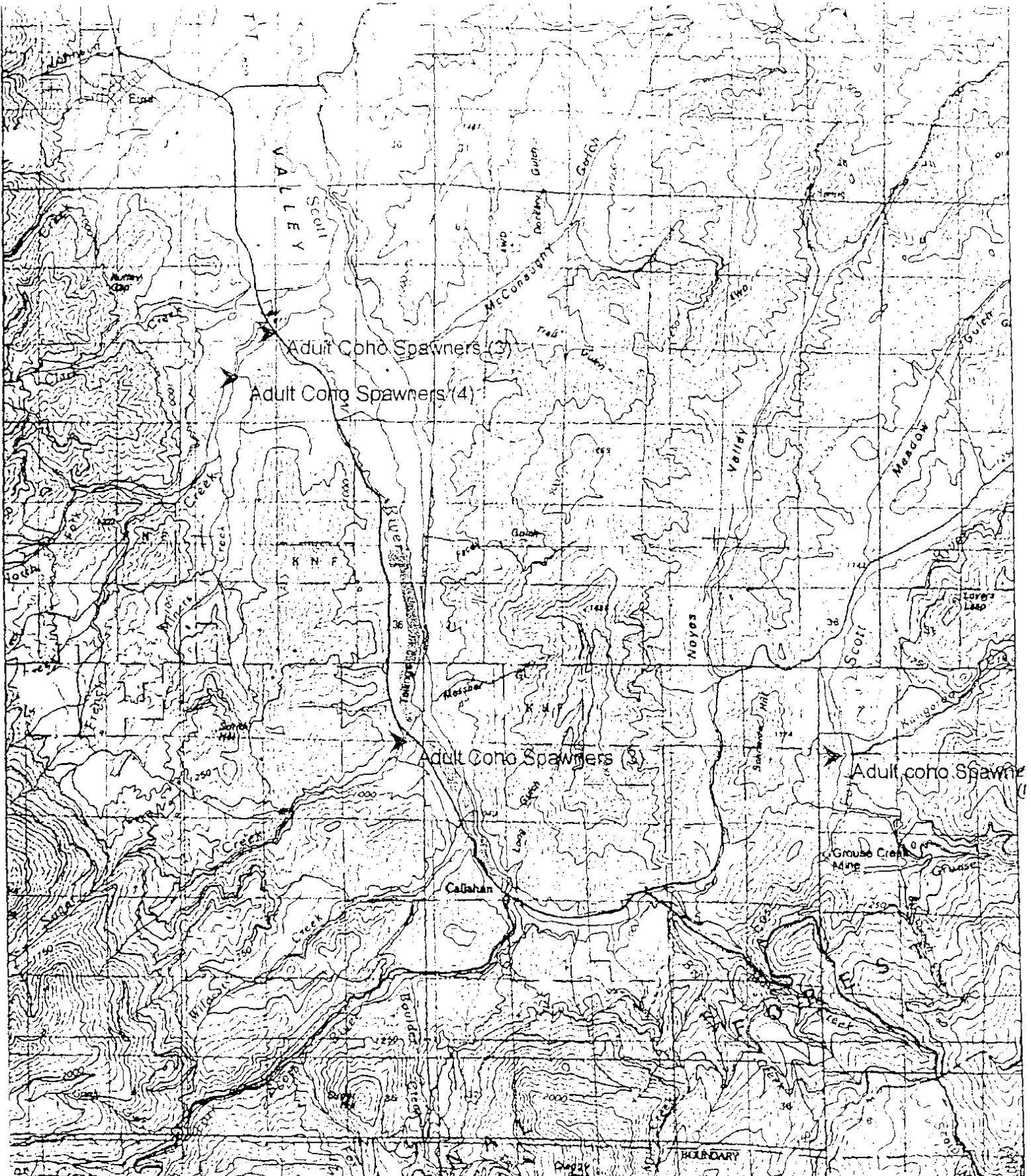
YREKA At the Hwy 3 bridge crossing we observed three adult coho holding near a redd that appeared to be under construction. Further upstream, on French Creek immediately downstream of the Miners Creek Road bridge crossing four adult coho were seen holding near a partially completed redd. Due to the angle and reflection on the surface of the water, digital photos taken were of poor quality and of little value.

Kidder Creek :

An unconfirmed report of an adult coho spotted in Kidder Creek near Barker Ditch was received second-hand from Mr. Gary Black. Attempts will be made later this week to confirm adult coho presence in Kidder, Patterson, Etna and Shackleford/Mill creeks. All these streams have historically contained coho.

• Additional photos are available upon request. These photos are on file (digitally) at the Yreka DFG office at 1625 South Main Street.

*Dennis K. Maria*  
Dennis Maria  
Associate Fishery Biologist



□ - 1 Markers, Length = 0 feet     
 ◻ - Default - 3 Markers, Length = 3 miles, 5236 feet     
 Adult Coho Spawners (4) - 041° 24' 10.7" N, 122° 52' 51" W  
 Adult Coho Spawners (3) - 041° 24' 40.8" N, 122° 51' 45" W     
 Adult Coho Spawners (3) - 041° 20' 13.4" N, 122° 45' 45" W     
 Adult Coho Spawners (17) - 041° 20' 04.1" N, 122° 44' 45" W

State: MT SHASTA  
 Date: 12/18/01  
 Scale: 1 inch equals 1.610 miles

Location: 041° 21' 57.6" N 122° 47' 59.0" W  
 Caption: Observed Adult Coho Spawners (December 14, 2001)

FIGURE 3  
SILVER SALMON  
SPAWNING AREAS

