



# **California Department of Fish and Game Klamath-Trinity Project**

## **Klamath Basin Chinook Salmon Spawning Escapement, Harvest and Age Composition**

Salmon Information Public Meeting

Santa Rosa, CA. March 1, 2011

Morgan Knechtle



# Klamath River Basin

● Crescent City

● Eureka

Iron Gate Dam

Iron Gate Hatchery

Boggs Creek

Shasta River

Scott River

River

Klamath

Salmon

River

Trinity

River

South

Fork

Trinity

River

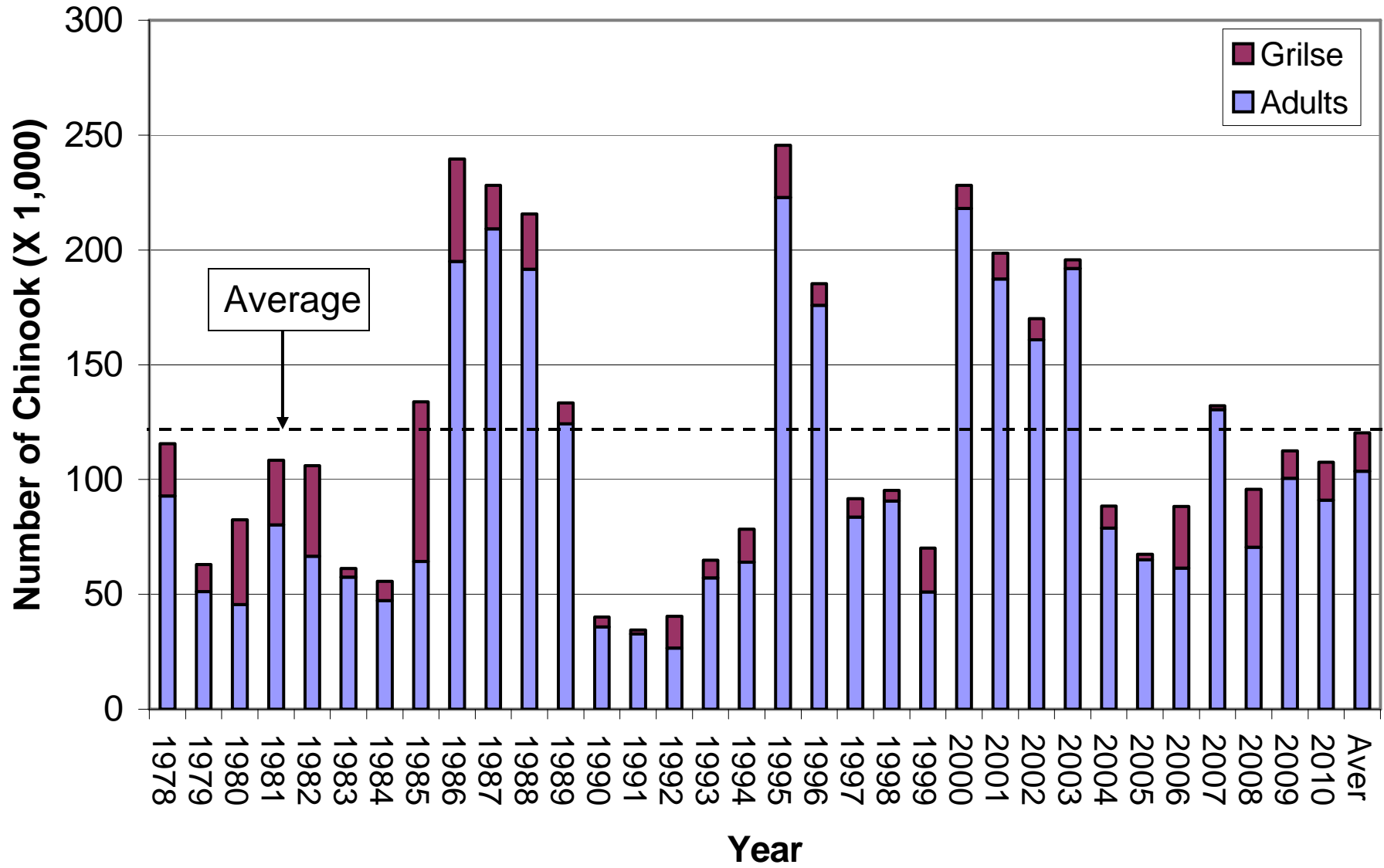
Lewiston Dam

Trinity River Hatchery

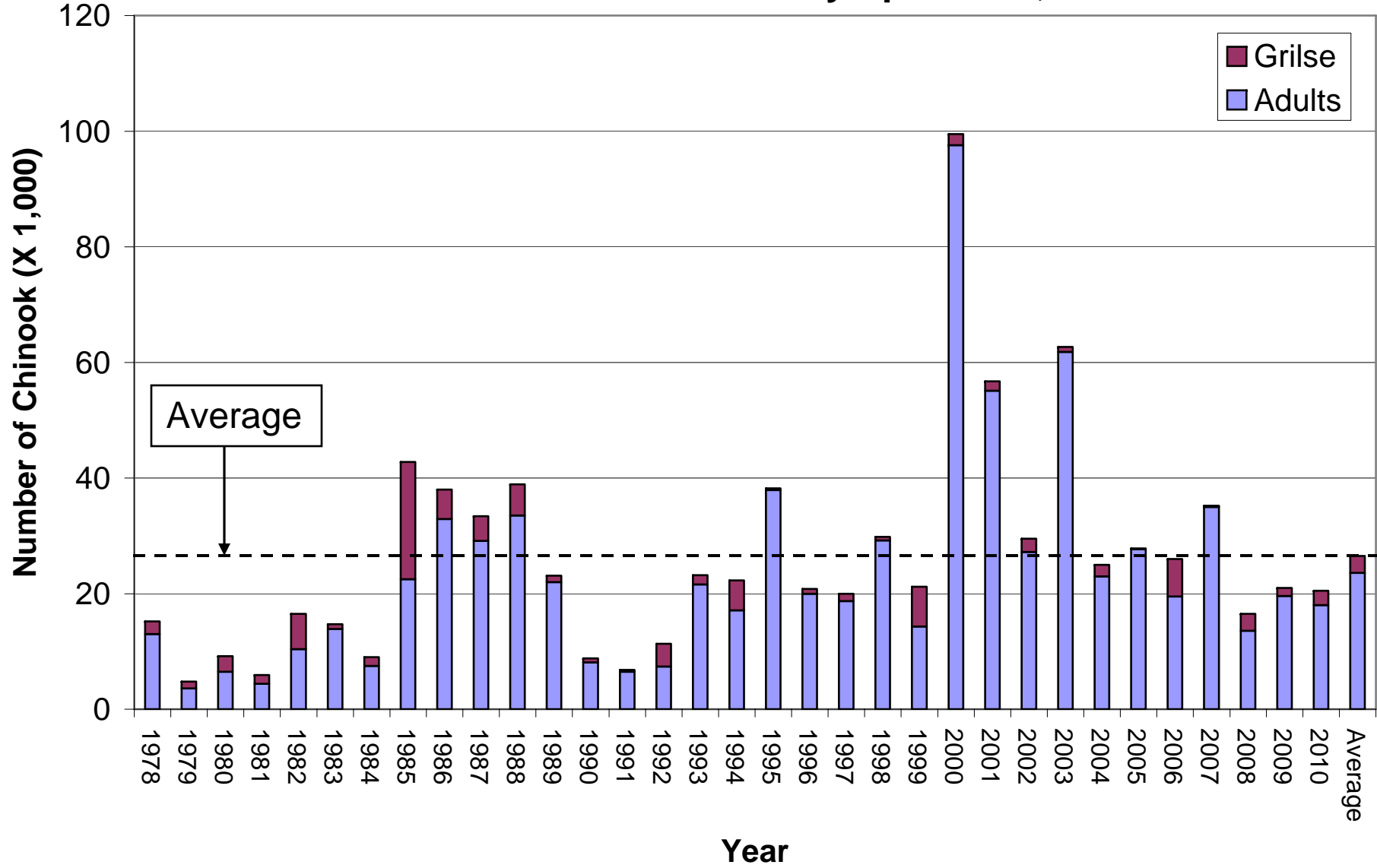
Pacific Ocean



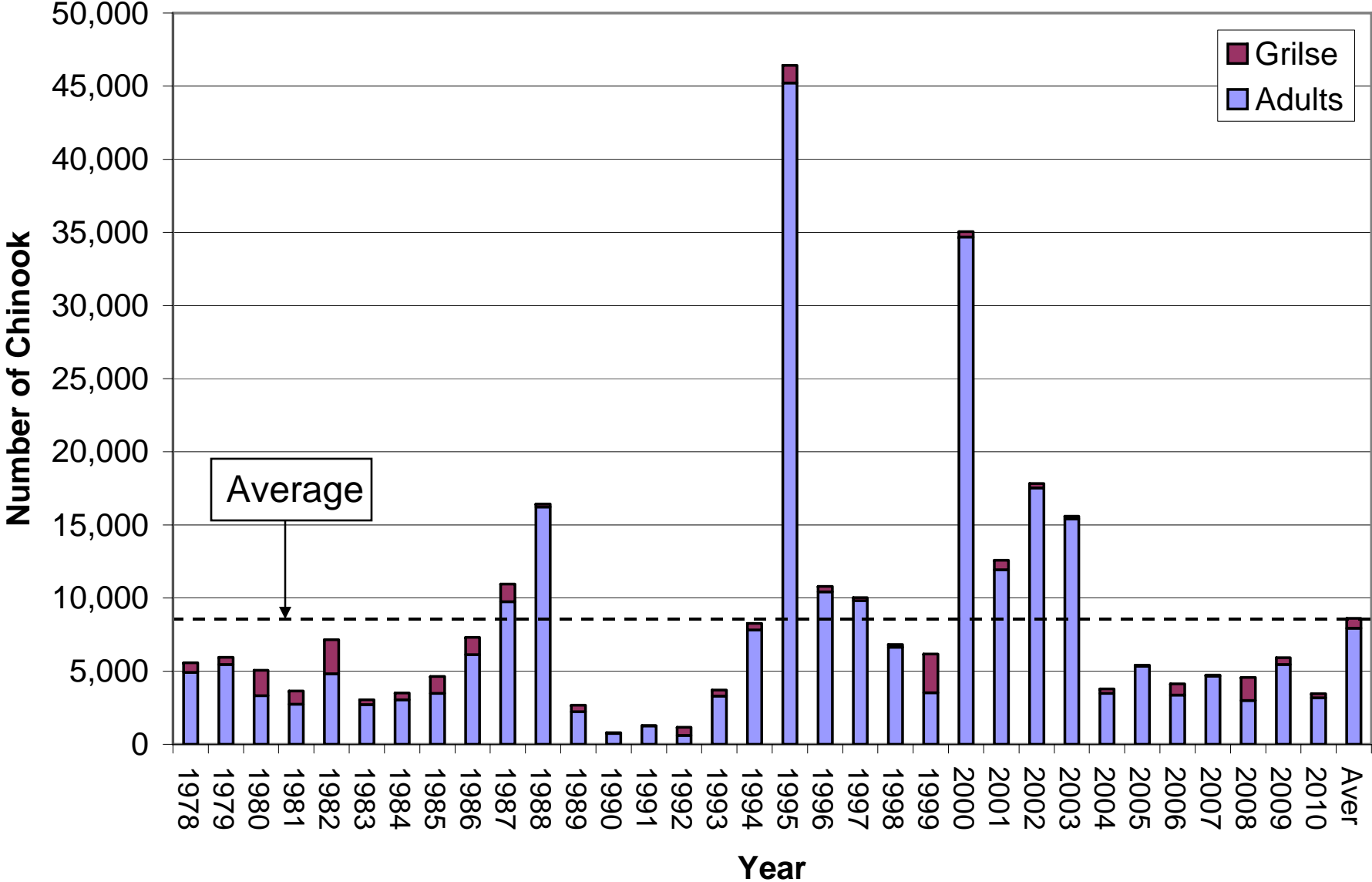
# Klamath River Fall Chinook Run Size, 1978-2010



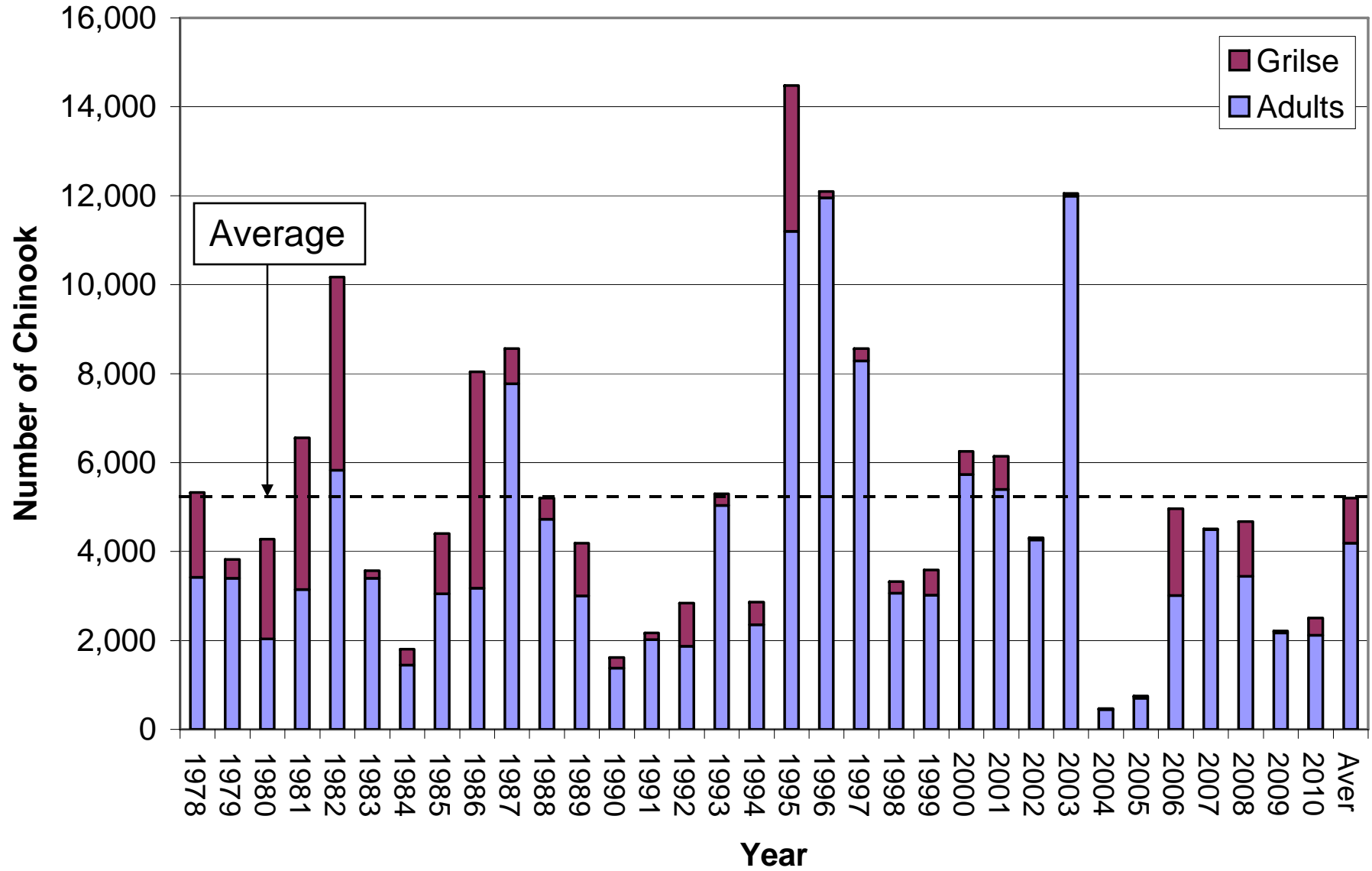
# Klamath River Fall Chinook Hatchery Spawners, 1978-2010



### Bogus Creek Fall Chinook, 1978-2010

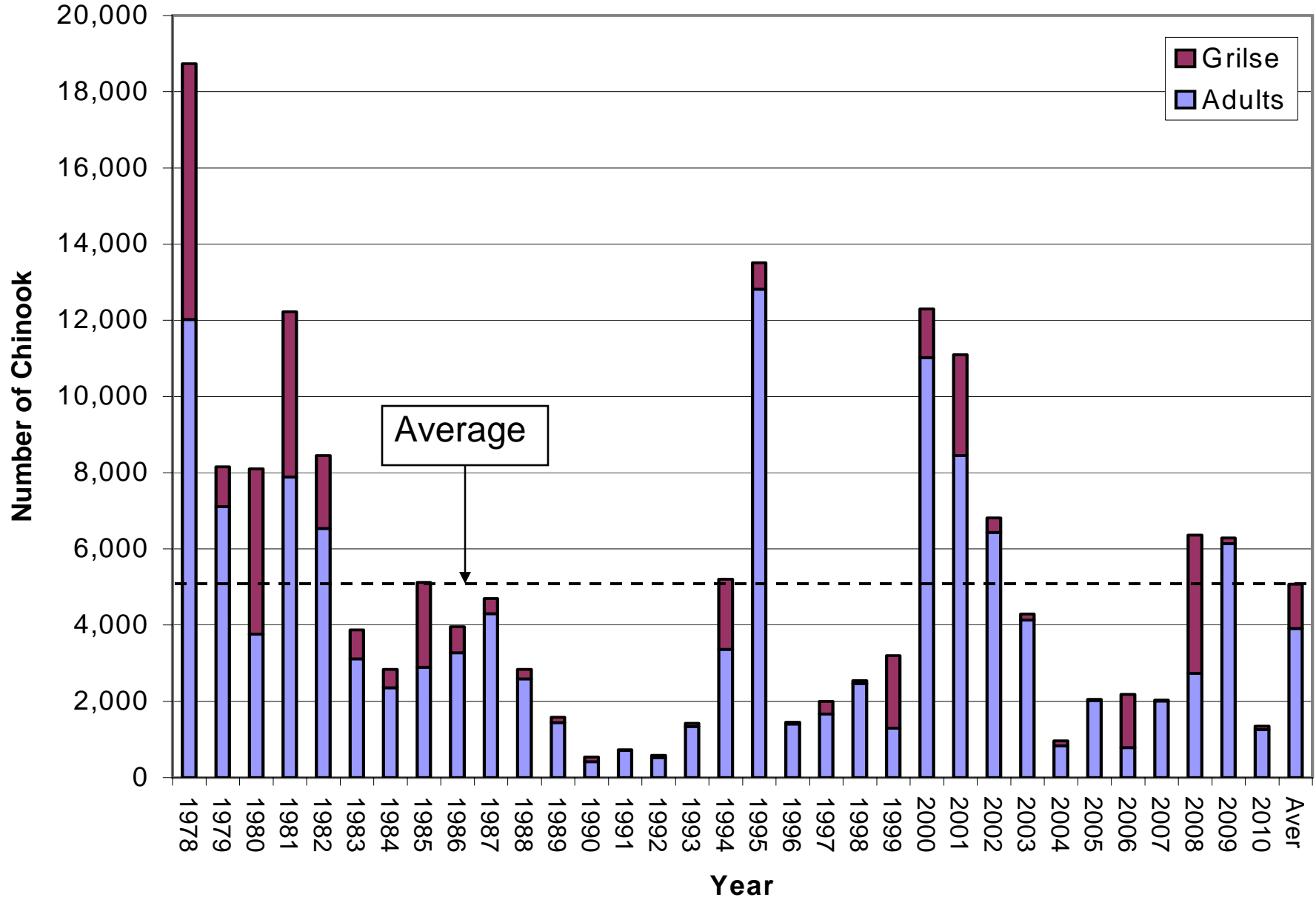


### Scott River Fall Chinook, 1978-2010

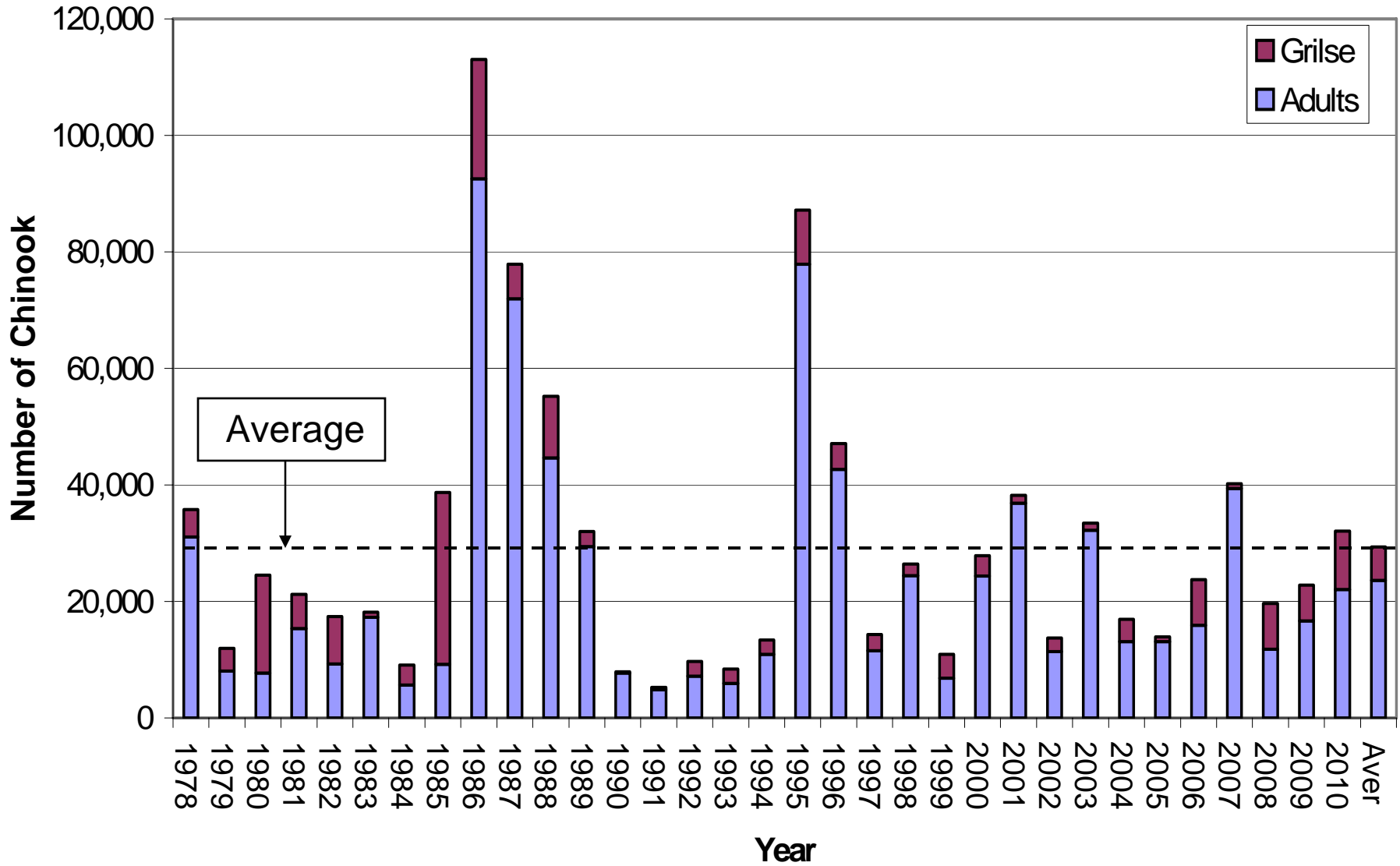




# Shasta River Fall Chinook, 1978-2010

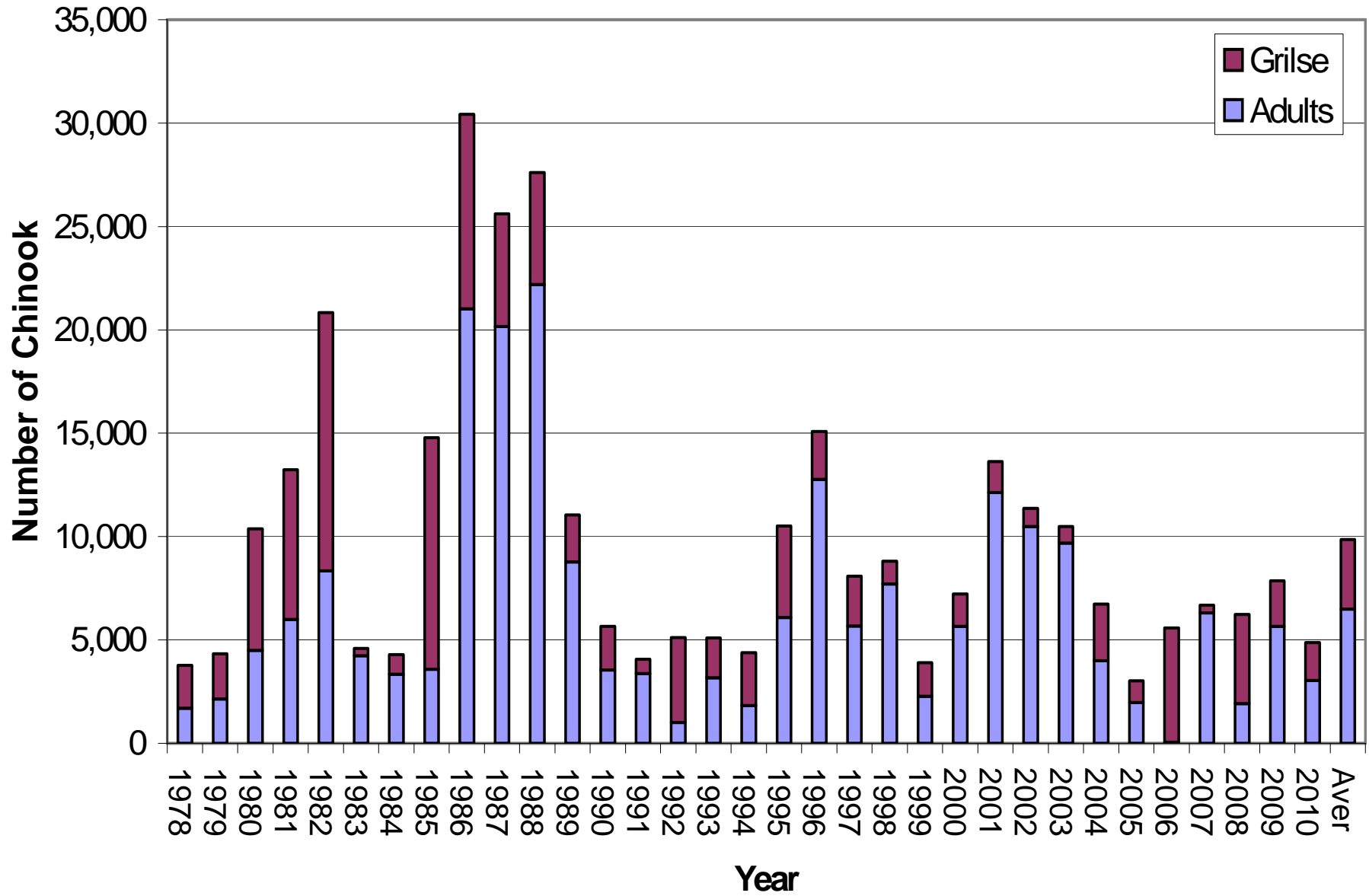


### Trinity River Fall Chinook, 1978-2010

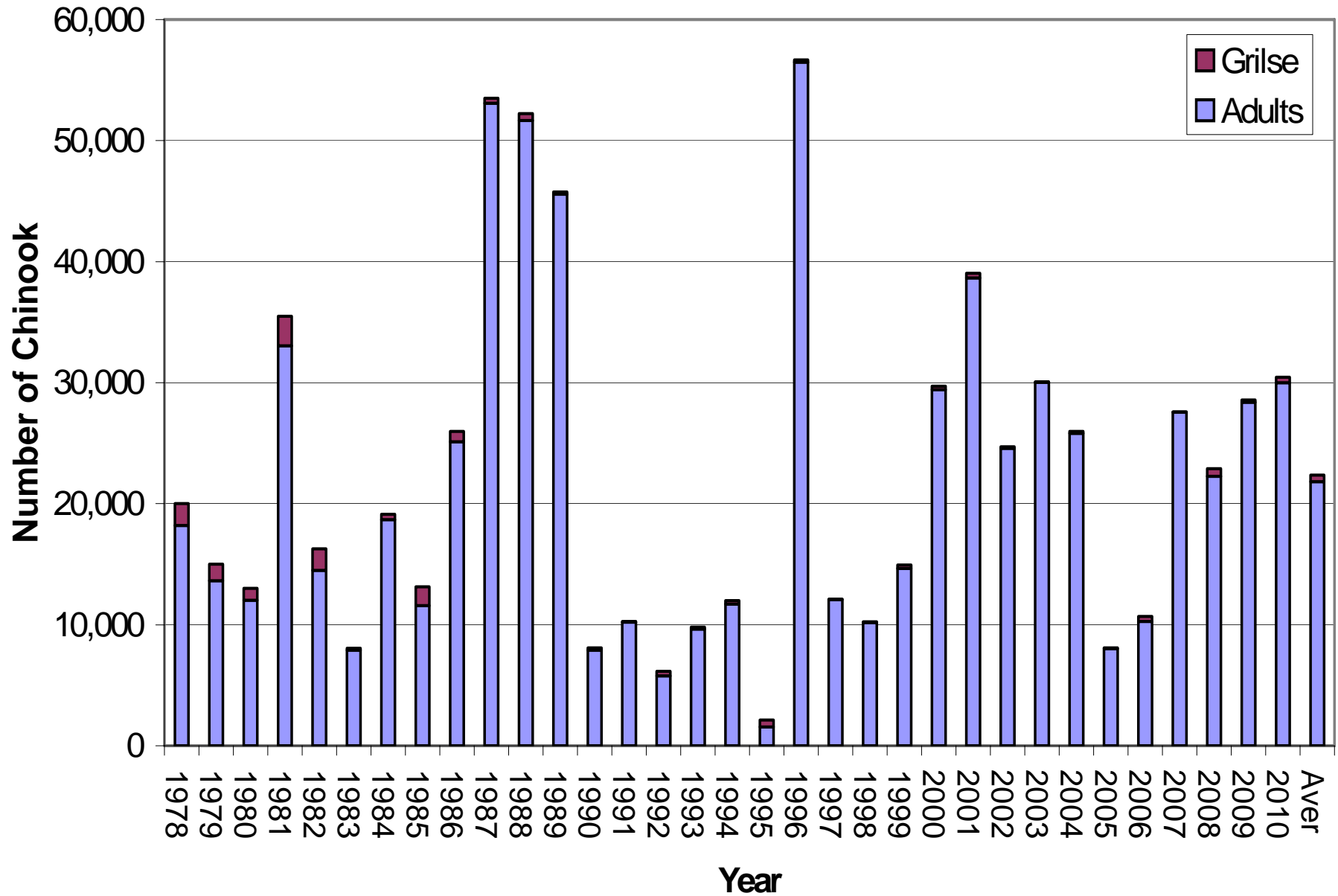




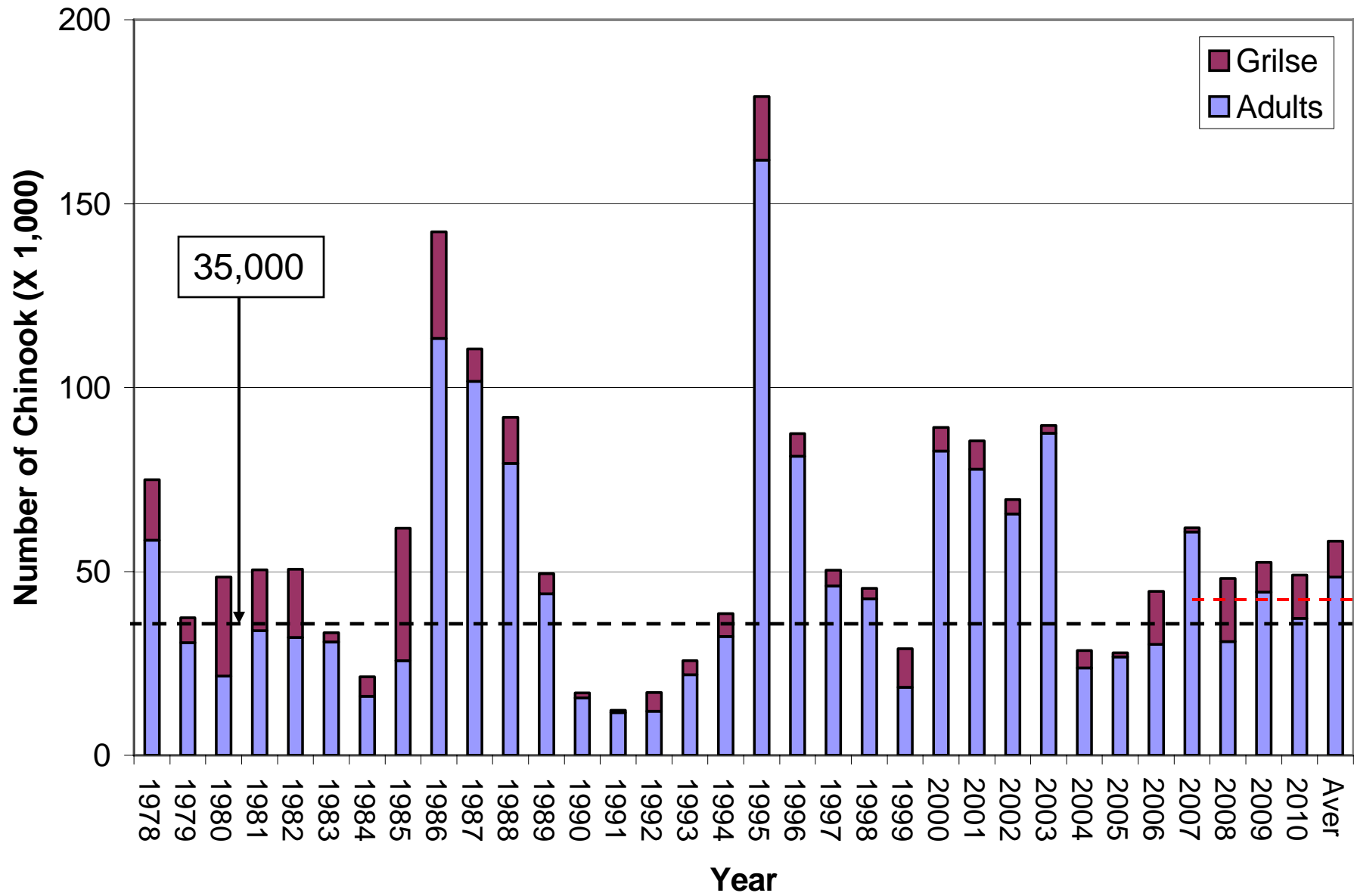
# Klamath River Fall Chinook Sport Harvest, 1978-2010



# Klamath River Fall Chinook Tribal Harvest, 1978-2010



### Klamath River Fall Chinook Natural Spawners, 1978-2010



Age composition of the 2010 Klamath River fall Chinook run\*.

| Escapement & Harvest                 | AGE           |               |               |            | Total Adults  | Total Run      |
|--------------------------------------|---------------|---------------|---------------|------------|---------------|----------------|
|                                      | 2             | 3             | 4             | 5          |               |                |
| <b>Hatchery Spawners</b>             |               |               |               |            |               |                |
| Iron Gate Hatchery                   | 1,071         | 6,899         | 3,376         | 1          | 10,276        | 11,347         |
| Trinity River Hatchery               | 1,432         | 3,958         | 3,810         | 6          | 7,774         | 9,206          |
| <b>Hatchery Spawner subtotal</b>     | <b>2,503</b>  | <b>10,857</b> | <b>7,186</b>  | <b>7</b>   | <b>18,050</b> | <b>20,553</b>  |
|                                      |               |               |               |            | 20%           | 19%            |
| <b>Natural Spawners</b>              |               |               |               |            |               |                |
| Klamath River subtotal               | 1,811         | 7,206         | 7,939         | 22         | 15,167        | 16,978         |
| Trinity River subtotal               | 9,995         | 11,860        | 9,996         | 199        | 22,055        | 32,050         |
| <b>Natural Spawners subtotal</b>     | <b>11,806</b> | <b>19,066</b> | <b>17,935</b> | <b>221</b> | <b>37,222</b> | <b>49,028</b>  |
|                                      |               |               |               |            | 41%           | 46%            |
| <b>Recreational Harvest</b>          |               |               |               |            |               |                |
| Klamath River harvest                | 1,571         | 1,631         | 970           | 9          | 2,610         | 4,181          |
| Trinity River harvest                | 261           | 253           | 164           | 7          | 424           | 685            |
| <b>Recreational Harvest subtotal</b> | <b>1,832</b>  | <b>1,884</b>  | <b>1,134</b>  | <b>16</b>  | <b>3,034</b>  | <b>4,866</b>   |
|                                      |               |               |               |            | 3%            | 5%             |
| <b>Tribal Harvest</b>                |               |               |               |            |               |                |
| Klamath River harvest                | 176           | 11,200        | 14,875        | 111        | 26,186        | 26,362         |
| Trinity River harvest                | 260           | 1,990         | 1,807         | 14         | 3,811         | 4,071          |
| <b>Tribal Harvest subtotal</b>       | <b>436</b>    | <b>13,190</b> | <b>16,682</b> | <b>125</b> | <b>29,997</b> | <b>30,433</b>  |
|                                      |               |               |               |            | 33%           | 28%            |
| <b>Dropoff Mortality</b>             |               |               |               |            |               |                |
|                                      | 75            | 1,185         | 1,474         | 10         | 2,669         | 2,744          |
|                                      |               |               |               |            | 3%            | 3%             |
| <hr/>                                |               |               |               |            |               |                |
| <b>Total River Run</b>               | <b>16,652</b> | <b>46,182</b> | <b>44,411</b> | <b>379</b> | <b>90,972</b> | <b>107,624</b> |
|                                      | 15.5%         | 42.9%         | 41.3%         | 0.4%       |               |                |

\*KRTAT 2011

Contributors:

- CDFG (KTP, OSP)
- Hoopa Valley Tribal Fisheries
- Yurok Tribal Fisheries
- Quartz Valley Tribal Fisheries
- Karuk Tribal Fisheries
- MKWC
- SRRC
- USFWS
- USFS
- NOAA
- Schools
- Landowners

