



South Coast Study Region Boundary

Impaired Water Bodies*

- Impaired Beaches¹
- Impaired Beaches²
- Impaired Rocky Shores¹
- Impaired Rocky Shores²
- Impaired Water Bodies

Power Plant Entrainment

of Larvae per Year Entrained

- 30,000,000 - 99,999,999
- 100,000,000 - 999,999,999
- 1,000,000,000 - 3,199,999,999
- 3,200,000,000 - 6,231,000,000
- ▲ Power Plant Intake

Discharge

- Major Stormwater Discharge**
- Major Wastewater Discharge**
- Minor Wastewater Discharge

* Contains all 303d listed pollutants except recreational contact impairments such as bacteria and/or other pathogens.

** Only contains 303d listed recreational contact impairments such as bacteria and/or other pathogens.

** The area covered by the symbology used to represent stormwater discharge and major wastewater discharge represents the true area affected by this discharge. The extent of all other symbology on this map is not to scale. The area covered by this symbology represents the general location of these features.



Marine Life Protection Act Initiative

Projection Information:

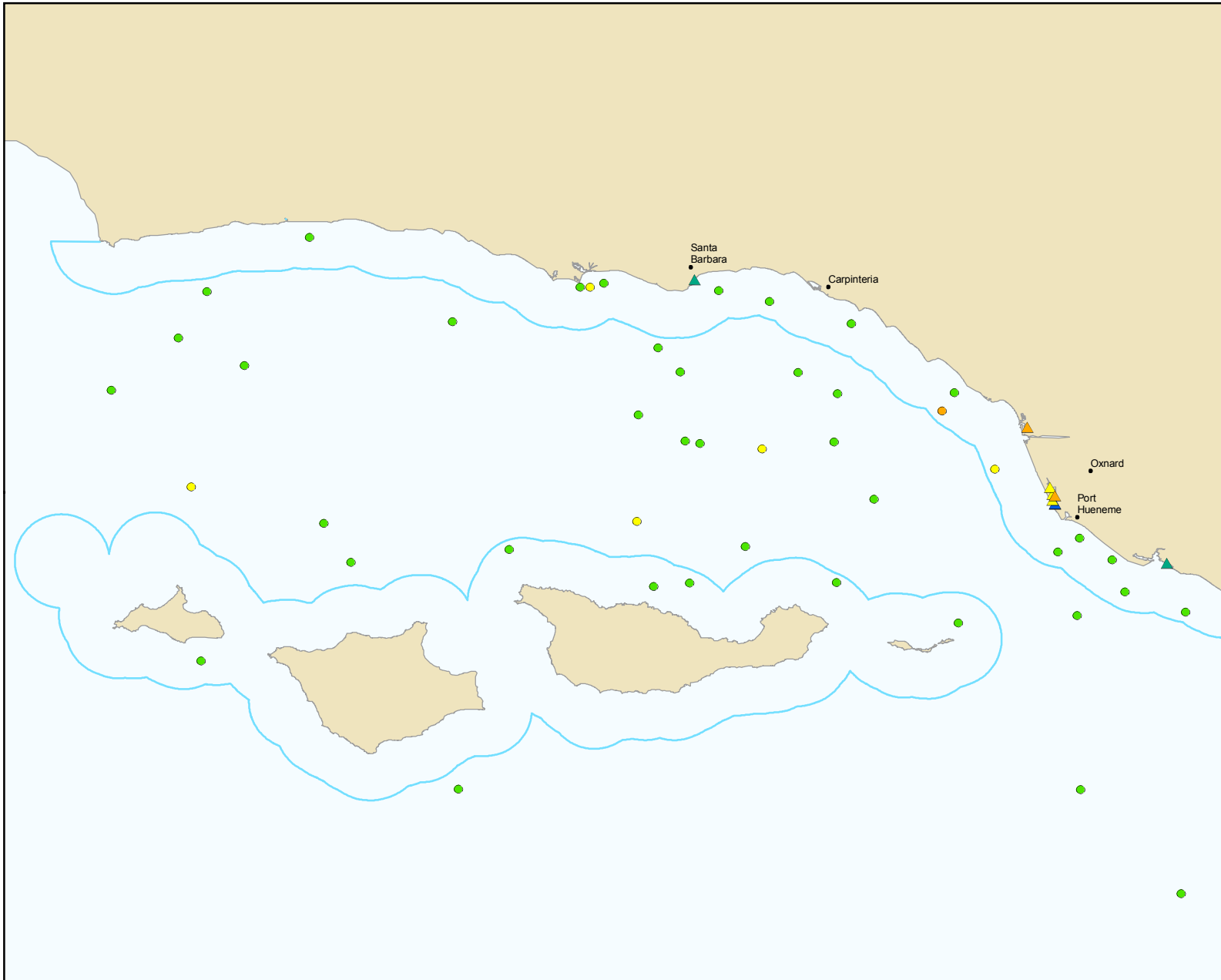
Name: NAD 1983 California Teale Albers
 Projection: Albers
 Datum: North American 1983



When a water body does not meet established water quality standards, it is placed on an impaired waters list mandated by §303(d) of the federal Clean Water Act.

Version: 1.5
 Printing Date: Jan 23, 2009

Map 1a



Legend

South Coast Study Region Boundary

Sediment Contamination

- ▲ Unimpacted
- ▲ Likely unimpacted
- ▲ Possibly impacted
- ▲ Likely impacted
- ▲ Clearly impacted

Benthic Condition

- Reference
- Response Level 1
- Response Level 2
- Response Level 3

Benthic Response Level	Benthic Condition	Benthic Condition Description
Reference	Good	Reference
Level 1	Good	Marginal deviation
Level 2	Poor	Biodiversity loss
Level 3	Poor	Community function loss or defaunation



Marine Life Protection Act Initiative

Projection Information:

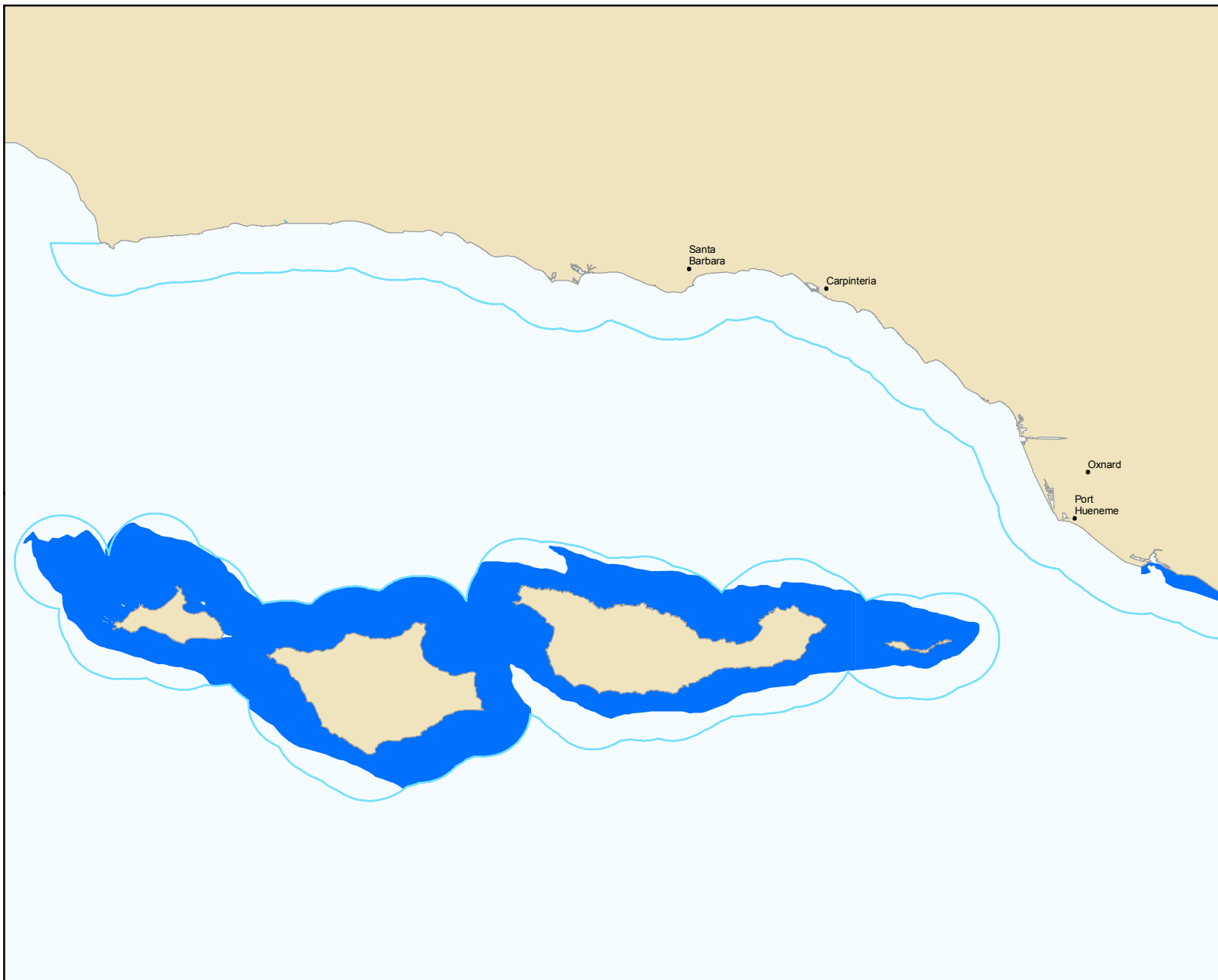
Name: NAD 1983 California Teale Albers
 Projection: Albers
 Datum: North American 1983



Citations for all data layers are the followings: Ackerman and Schiff (2003); Bay et al. (2003); Barnett et al. (2007); Ranasinghe et al. (2007); Foster and Steinbeck (2008); USEPA (2008). The full citations can be found within the water quality guidance document labeled "California MLPA Master Plan Science Advisory Team Recommendations for Considering Water Quality and Marine Protected Areas in the South Coast Study Region".

Version: 1.2
Printing Date: Dec 8, 2008

Map 1b



Legend

South Coast Study Region Boundary



Area of Special Biological Significance



Marine Life Protection Act Initiative

Projection Information:

Name: NAD 1983 California Teale Albers
Projection: Albers
Datum: North American 1983



0 1.25 2.5 5 Miles
1:700,000

Version: 1.1
Printing Date: Dec 3, 2008

Map 1c