

Marine Life Protection Act Initiative



MLPA Goal 3 Evaluation of Draft MPA Arrays and External Proposals

Darci Connor, Marine Planner, MLPA Initiative

Presentation to the MLPA Blue Ribbon Task Force
April 15, 2009 • Dana Point, CA

Goal 3 Defined

Marine Life Protection Act (MLPA)

Goal 3 states:

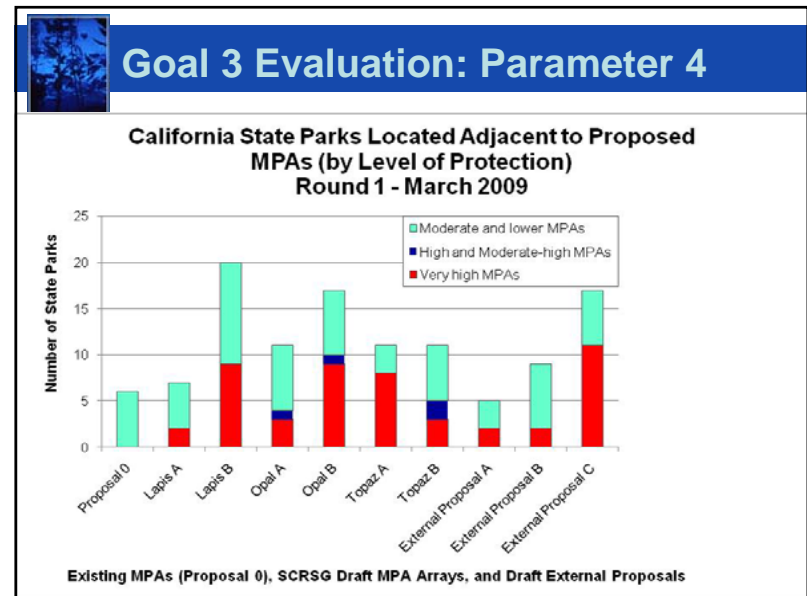
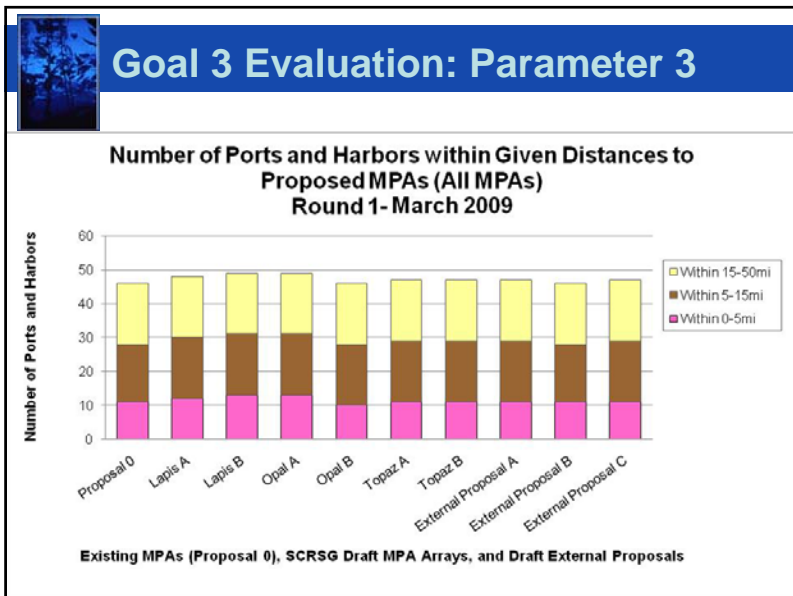
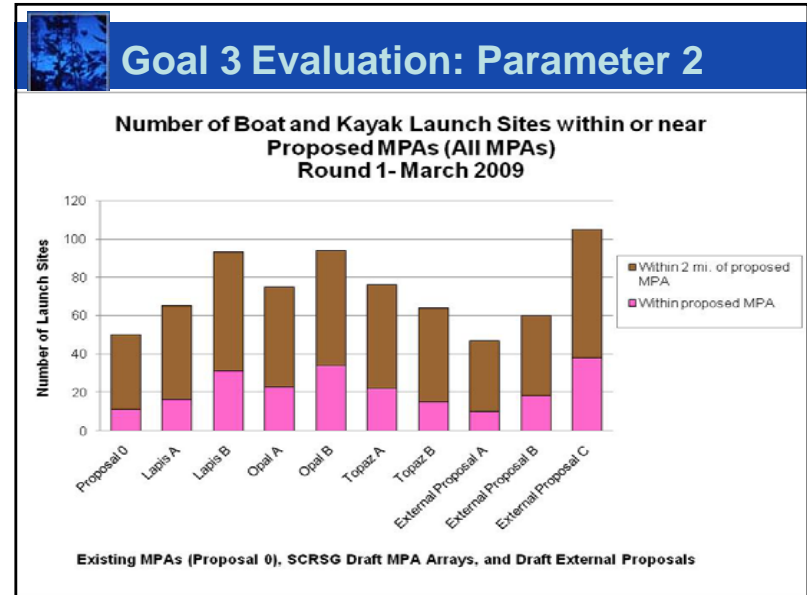
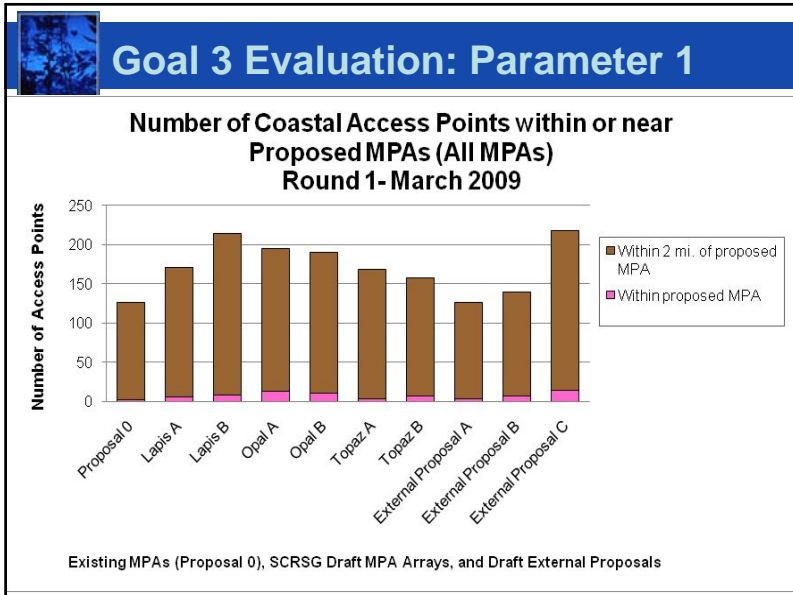
“To improve recreational, educational, and study opportunities provided by marine ecosystems that are subject to minimal human disturbance, and to manage these uses in a manner consistent with protecting biodiversity.”

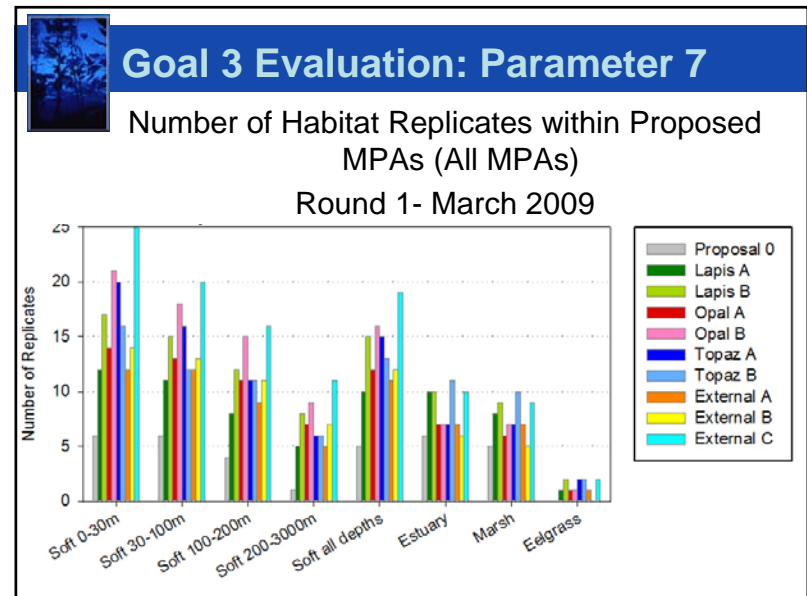
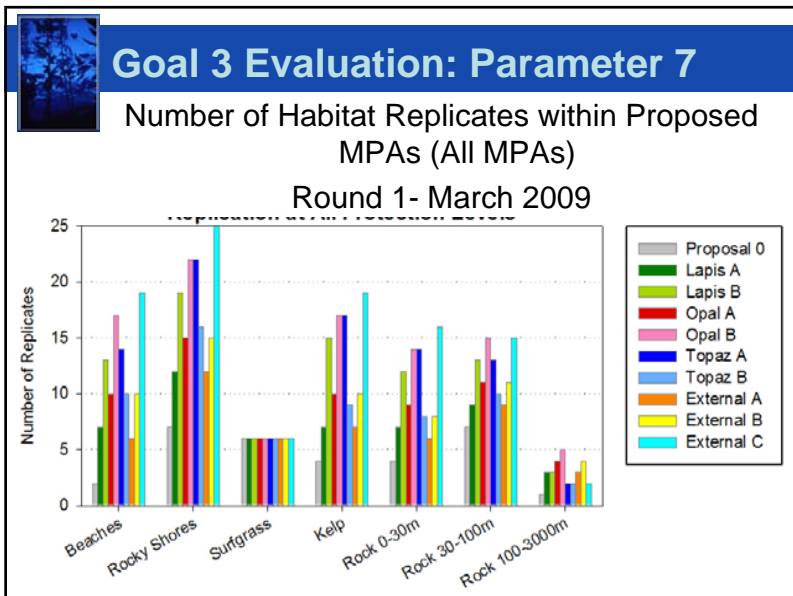
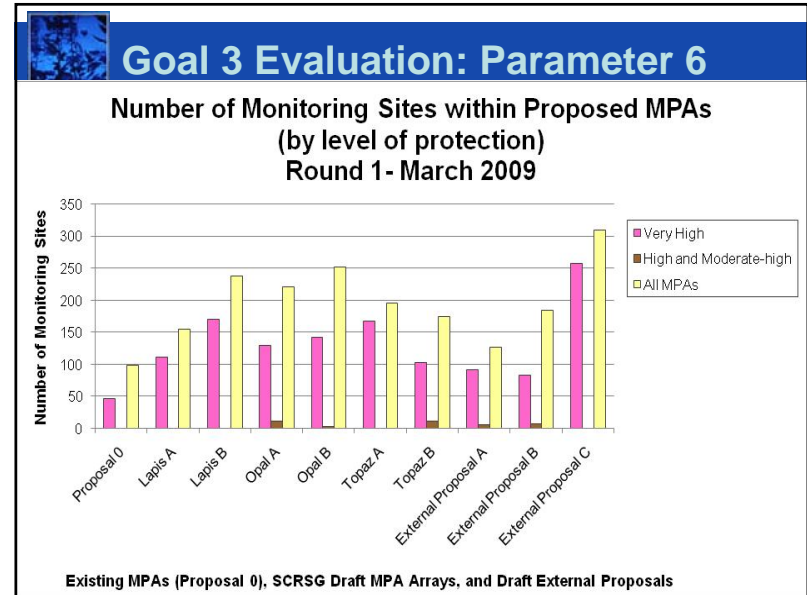
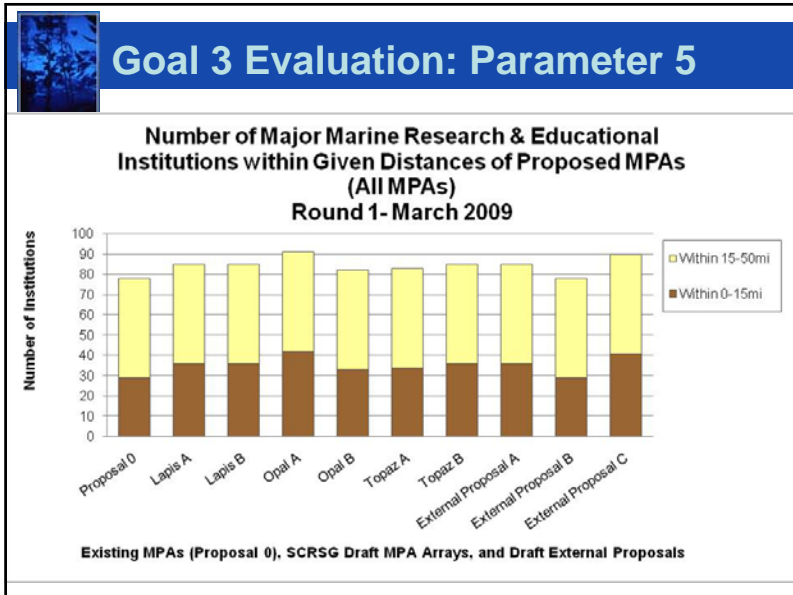
Key Considerations

- Focuses on access to recreational, educational, and study opportunities
- Working from best-readily available data that covers spatial extent of study region
- Provides relative comparison across proposals
- Is not intended to provide an exhaustive list of all opportunities (or parameters)
- **Draft marine protected area (MPA) arrays and proposals were evaluated against 7 parameters**

Goal 3 Parameters

1. Number of access points within or near all proposed MPAs.
2. Number of boat and kayak launch sites within or near proposed MPAs
3. Number of ports and harbors within given distances of proposed MPAs
4. Number of terrestrial state parks that are adjacent to proposed nearshore MPAs
5. Number of major research and educational institutions within given distances of proposed MPAs
6. Number of long-term marine monitoring sites within proposed MPAs.
7. Number of habitat replicates for study opportunities







Summary of Goal 3 Evaluation

- In general, draft arrays and external proposals improve recreational, educational, and study opportunities compared to Proposal 0
- Many proposals do not include a mixture of MPA designations and therefore most MPAs are at the very high level of protection
- Many of the parameters are captured in the outer distance ranges from proposed MPAs. Could improve by placing MPAs in closer proximity to these parameters