

Marine Life Protection Act Initiative



Draft Summary of Potential Impacts of the SCRSG Round 3 MPA Proposals on Commercial and Recreational Fisheries

Presentation to the MLPA South Coast Science Advisory Team
October 6, 2009 • Los Angeles, CA

Dr. Astrid Scholz, Ecotrust



Overview

- Data and analysis

	Commercial	Commercial Passenger Fishing Vehicle (CPFV)	Recreational
# of fisheries	15 species	10 species	17 species
Level of analysis	65 port-fishery combinations	80 port-fishery combinations	Results reported by user group (private boat, kayak, dive/spear) and by county

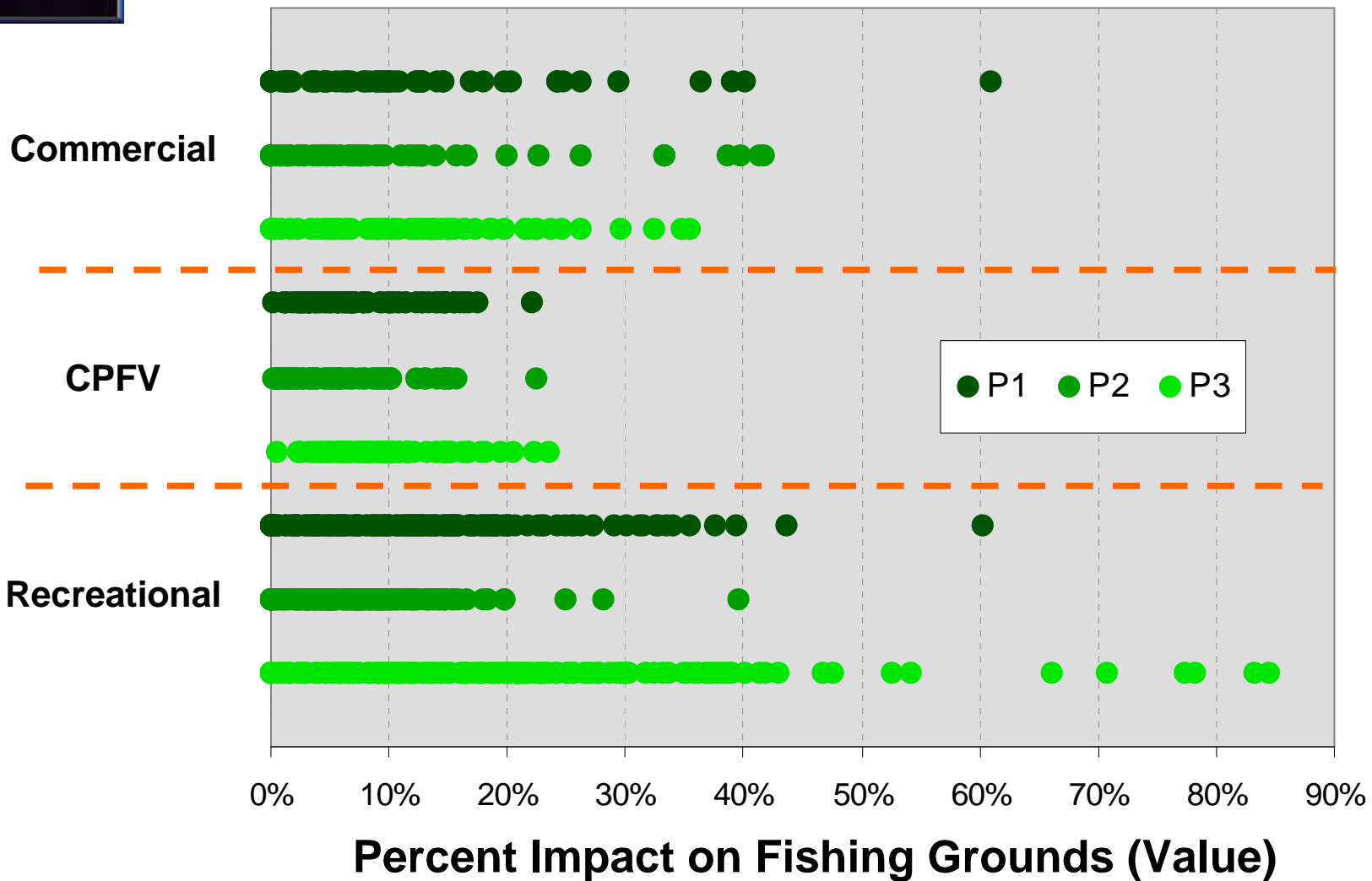
- Reported results

	Commercial	CPFV	Recreational
Potential impacts on fishing grounds (area and value)	X	X	X
Potential net economic impacts	X	X	
Potential gross economic impacts	X		
Disproportionate impacts	X	X	

- Convergence between the proposals
- Additional analysis and next steps



1. Impact on Fishing Grounds (Value)



*Dots represent port-fishery combinations.

1. Impacts on Fishing Grounds (Value)

- Number of port-fishery impacts in each proposal with the least potential impact on total value of commercial fisheries considering 65 port-fishery combinations

	P1	P2	P3
Least potential impact	14	47	14
Greatest potential impact	10	13	50

Example: P1 has the least potential impact on 14 port-fishery combinations and the greatest potential impact on 10 port-fishery combinations.

- Number of port-fishery impacts in each proposal with the least potential impact on total value of CPFV fisheries considering 80 port-fishery combinations

	P1	P2	P3
Least potential impact	21	40	30
Greatest potential impact	50	7	25

2. Net Economic Impacts (Commercial)

- Lowest impact in each row is in blue

Port	Baseline GER	Estimated Costs	Baseline NER (Profit)	C.I. MPAs	P1	P2	P3
				\$ Reduction in Profit	\$ Reduction in Profit		
Santa Barbara	\$5,796,804	\$2,655,064	\$3,141,740	\$256,224	\$439,340	\$390,779	\$497,798
Ventura	\$5,061,321	\$2,828,803	\$2,232,518	\$86,604	\$139,310	\$126,082	\$460,066
Port Hueneme	\$11,061,000	\$6,008,602	\$5,052,398	\$306,853	\$520,378	\$497,327	\$1,085,988
San Pedro	\$20,141,349	\$10,989,464	\$9,151,885	\$227,858	\$803,762	\$725,720	\$1,529,085
Dana Point	\$1,860,091	\$926,136	\$933,955	\$2,458	\$200,210	\$148,315	\$220,869
Oceanside	\$987,326	\$481,905	\$505,421	\$1,146	\$143,690	\$143,044	\$141,856
San Diego	\$3,093,219	\$1,462,682	\$1,630,538	\$168	\$391,505	\$305,068	\$353,248
Study Region	\$48,001,110	\$25,352,655	\$22,648,455	\$881,311	\$2,638,195	\$2,336,335	\$4,288,910
				% Reduction in Profit	% Reduction in Profit		
Santa Barbara	100%	46%	54%	7.5%	14.0%	12.4%	15.8%
Ventura	100%	56%	44%	3.9%	6.2%	5.6%	20.6%
Port Hueneme	100%	54%	46%	6.1%	10.3%	9.8%	21.5%
San Pedro	100%	55%	45%	2.5%	8.8%	7.9%	16.7%
Dana Point	100%	50%	50%	0.3%	21.4%	15.9%	23.6%
Oceanside	100%	49%	51%	0.2%	28.4%	28.3%	28.1%
San Diego	100%	47%	53%	0.0%	24.0%	18.7%	21.7%
Study Region	—	—	—	3.9%	11.6%	10.3%	18.9%

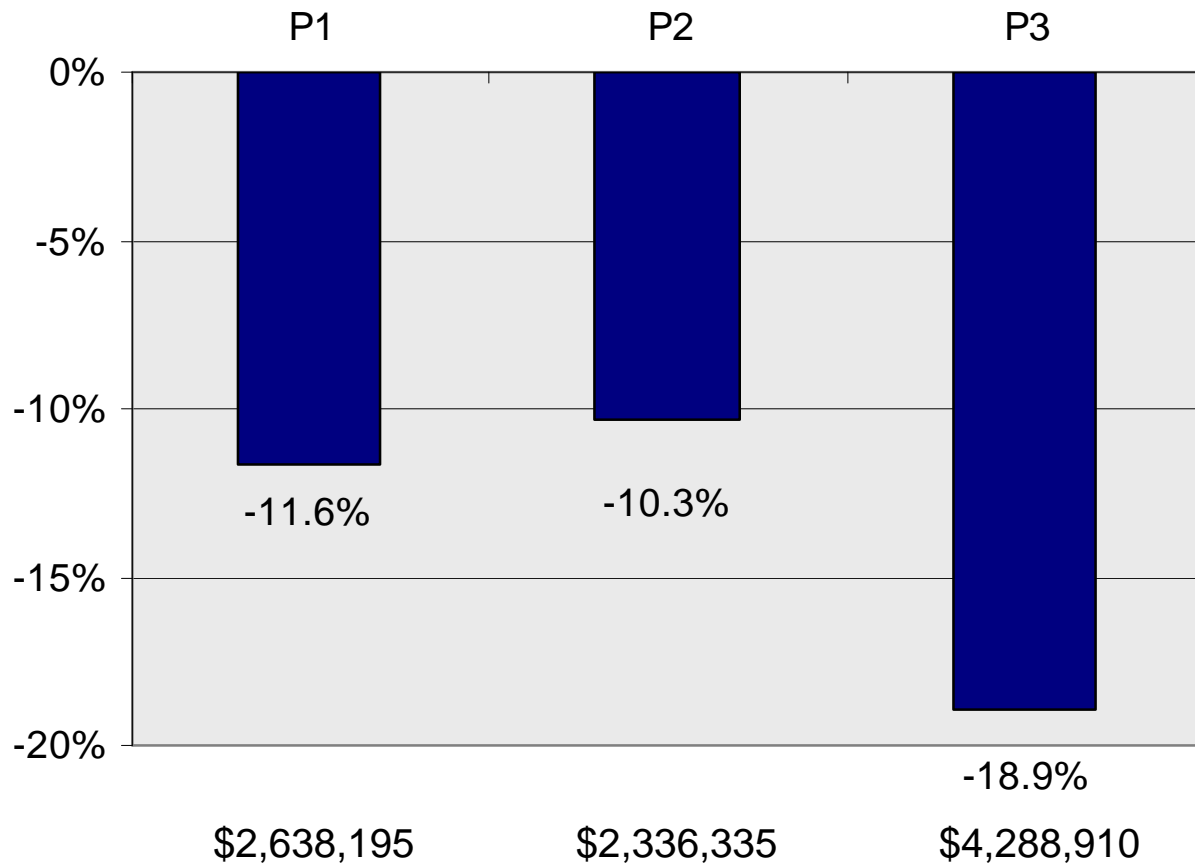
2. Net Economic Impacts (Commercial)

- Lowest impact in each row (reported at the study region level) is in blue

Fishery	Baseline	Estimated	Baseline	C.I. MPAs			
	GER	Costs	NER (Profit)	% Reduction in Profit			
				P1	P2	P3	
				% Reduction in Profit			
Ca. Halibut (Hook & Line)	100%	52%	48%	9.3%	19.9%	17.9%	27.6%
Ca. Halibut (Trawl)	—	—	—	—	—	—	—
Coastal Pelagics	100%	56%	44%	0.8%	6.3%	4.1%	11.7%
Lobster	100%	46%	54%	1.6%	16.6%	12.9%	21.2%
N. Fishery (Hook & Line)	100%	52%	48%	11.1%	23.1%	23.0%	27.1%
N. Fishery (Trap)	100%	51%	49%	0.7%	15.8%	8.9%	21.4%
Rock Crab	100%	47%	53%	4.0%	11.7%	10.3%	12.7%
Sablefish	100%	56%	44%	0.0%	44.9%	61.8%	41.5%
Sea Cucumber (Diving)	100%	50%	50%	13.0%	22.3%	21.3%	30.3%
Sea Cucumber (Trawl)	—	—	—	—	—	—	—
Spot Prawn	100%	49%	51%	9.9%	18.7%	17.1%	19.3%
Squid	100%	57%	43%	3.7%	7.3%	6.7%	19.5%
Swordfish	100%	66%	34%	2.1%	17.9%	9.7%	19.1%
Thornyhead	100%	52%	48%	0.0%	62.7%	67.0%	55.9%
Urchin	100%	45%	55%	6.6%	13.2%	12.0%	16.9%
All Fisheries	—	—	—	3.9%	11.6%	10.3%	18.9%



2. Net Economic Impacts (Commercial)



Maximum Potential Net Economic Impact (Reduction in Profit)

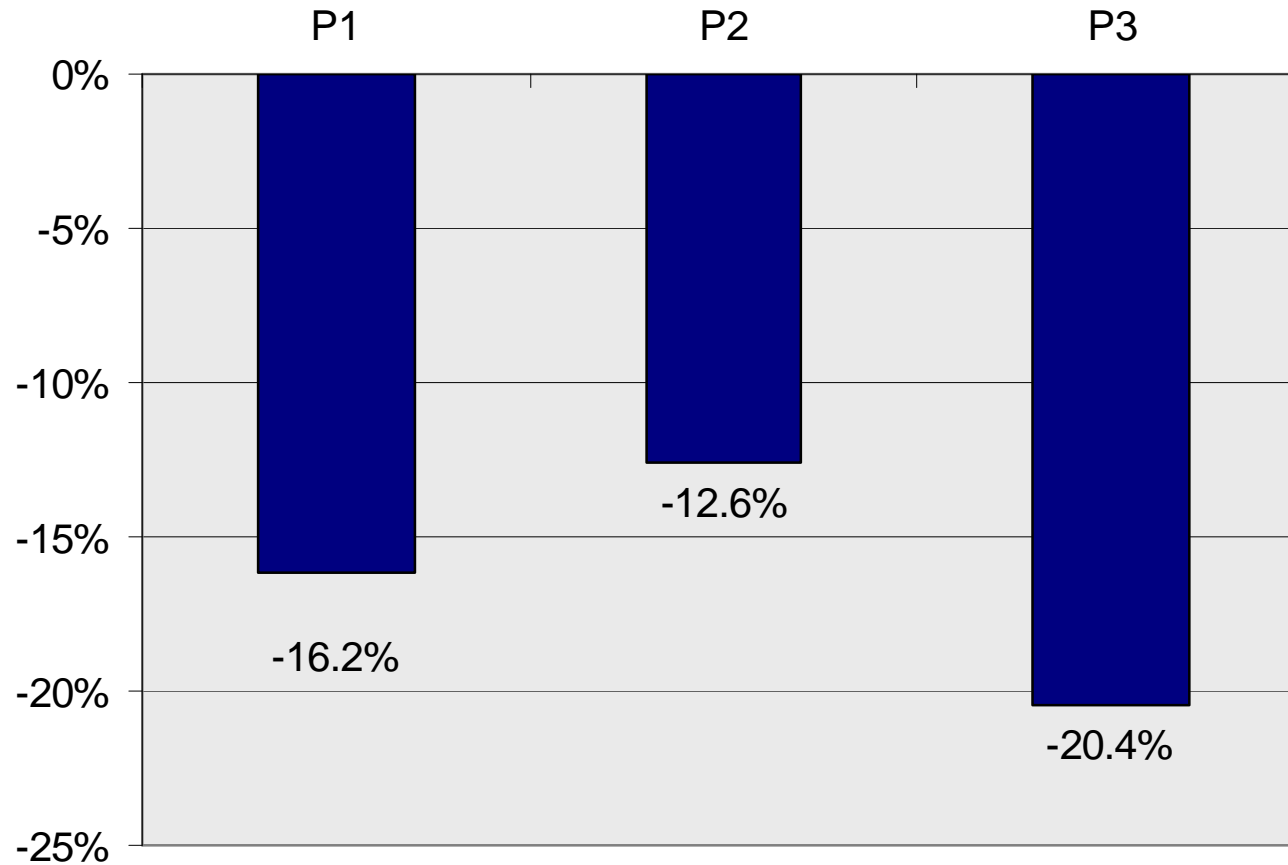
Note: For potential gross economic impacts, please see pages 14-24 in the summary evaluation report

2. Net Economic Impacts (CPFV)

- Lowest impact in each row is in blue

Port	Baseline GER	Estimated Costs	Baseline NER (Profit)	C.I. MPAs	P1	P2	P3
				% Reduction in Profit	% Reduction in Profit		
Santa Barbara Port Hueneme / Channel Islands Harbor	100%	67%	33%	7.5%	15.3%	13.7%	19.8%
Santa Monica	100%	61%	39%	11.8%	24.1%	25.5%	28.3%
San Pedro / Long Beach	100%	74%	26%	0.0%	10.4%	2.7%	16.5%
Newport Beach	100%	65%	35%	0.0%	5.4%	4.7%	9.5%
Dana Point	100%	62%	38%	0.0%	11.7%	5.9%	19.0%
Oceanside	100%	79%	21%	0.0%	16.8%	9.4%	32.4%
San Diego	100%	62%	38%	0.0%	15.7%	13.8%	12.5%
Study Region	—	82%	18%	2.1%	39.6%	27.2%	37.0%
				3.0%	16.2%	12.6%	20.4%

2. Net Economic Impacts (CPFV)



Maximum Potential Net Economic Impact (% Reduction in Profit)

3. Disproportionate Impacts – Summary

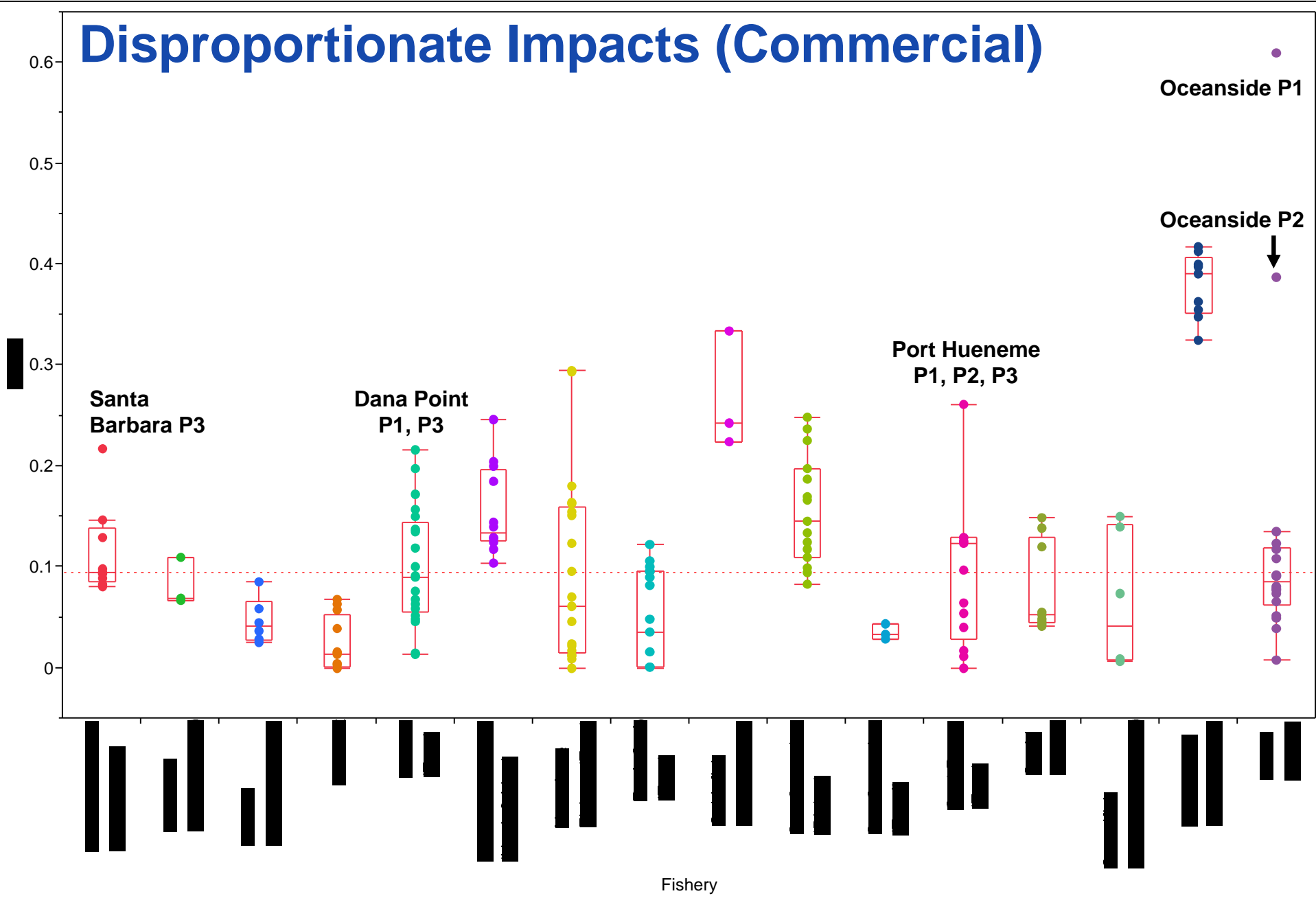
- Disproportionately impacted commercial port-fishery combinations

Port	Fishery	Proposal(s)
Santa Barbara	Ca. Halibut (Hook and Line)	P3
Dana Point	Nearshore Fishery (Trap)	P1, P3
Port Hueneme	Spot Prawn (Trap)	P1, P2, P3
Oceanside	Urchin (Diving)	P1, P2

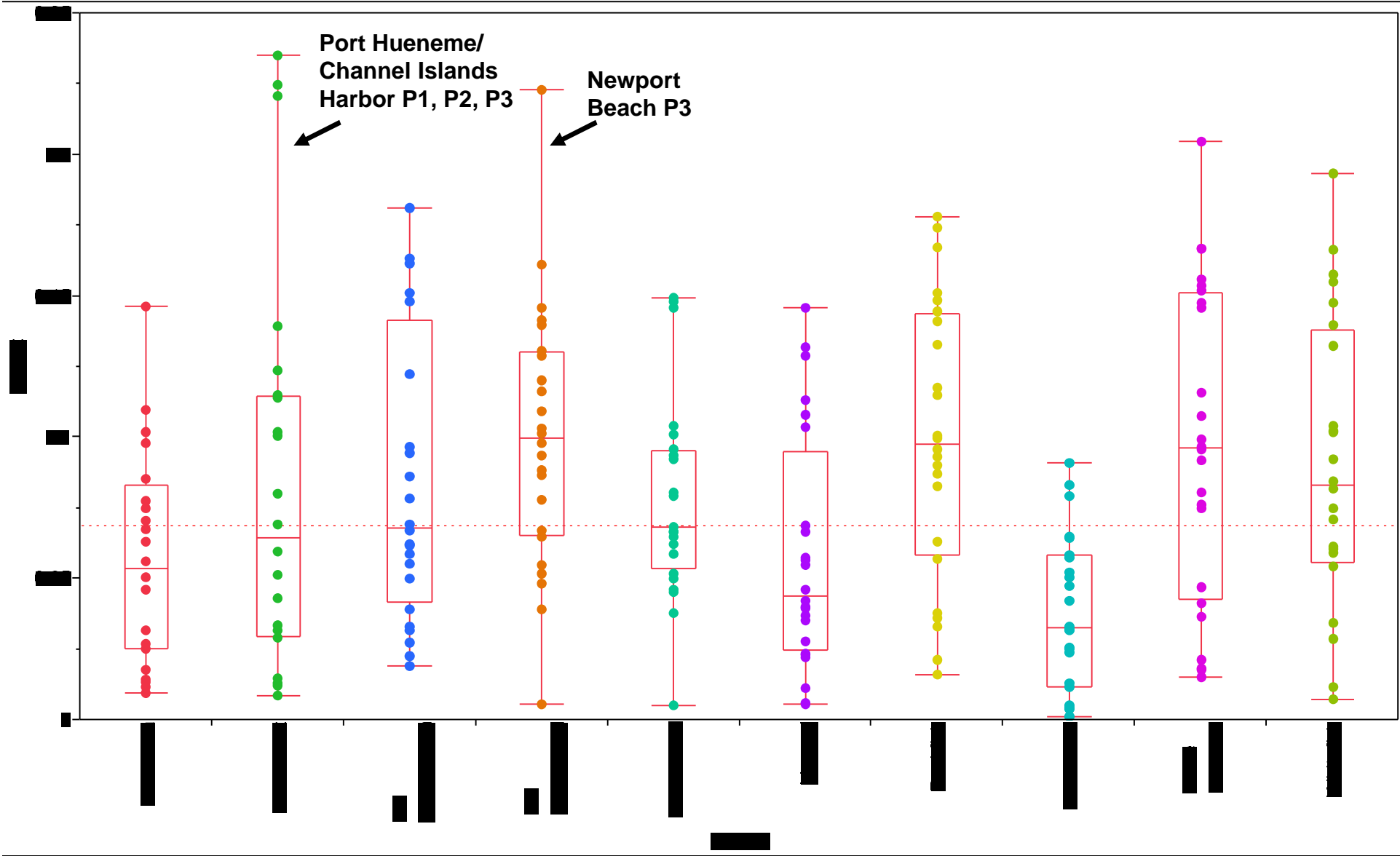
- Four most impacted CPFV port-fishery combinations

Port	Fishery	Proposal(s)
Port Hueneme / Channel Islands Harbor	Ca. Halibut	P1, P2, P3
Newport Beach	Ca. Sheephead	P3

Disproportionate Impacts (Commercial)



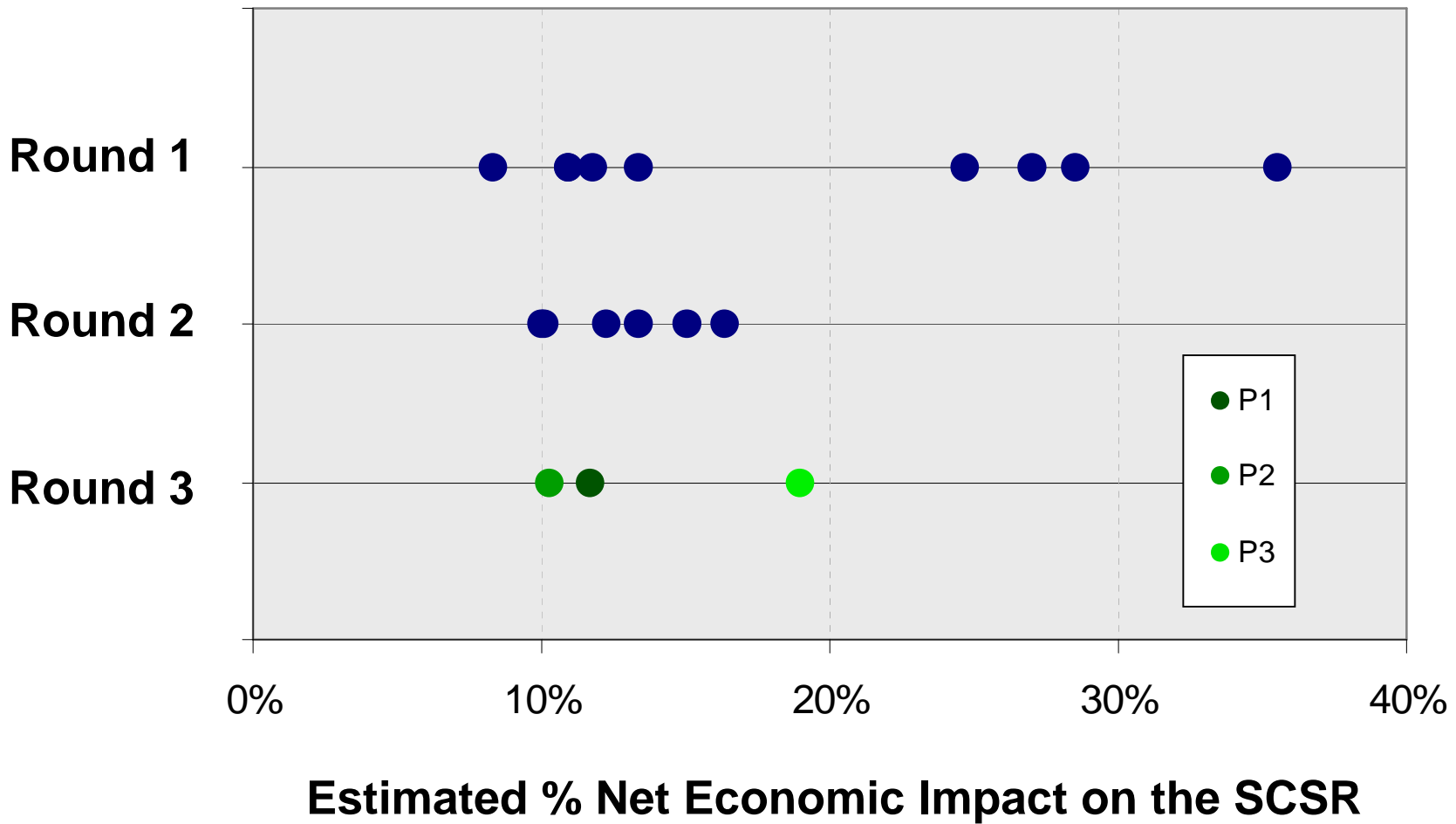
Briefing Document K.1: Draft Potential Commercial and Recreational Fishing Evaluation Results for



Disproportionate Impacts (CPFV)

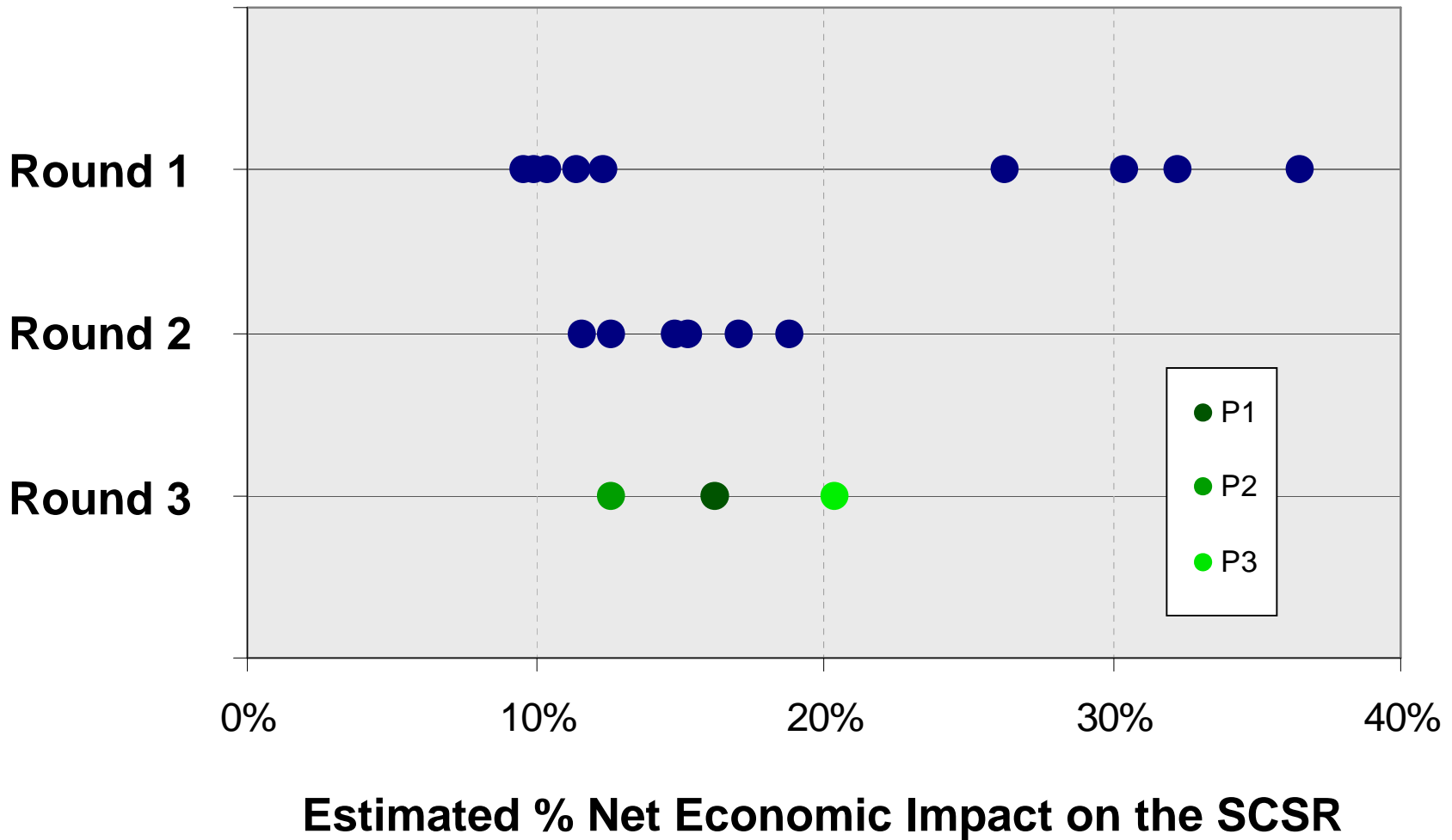


4. Convergence (Commercial)





4. Convergence (CPFV)



4. Convergence (Recreational)

- Change in average % impact on value (across all proposals) on the top target species for each user group from round 1 to round 3

County	Sector	Fishery	Change	County	Sector	Fishery	Change	County	Sector	Fishery	Change
Santa Barbara	Dive	Ca. Halibut	-4.1%	Los Angeles	Dive	Ca. Halibut	-11.2%	San Diego	Dive	Ca. Halibut	1.8%
		Calico Bass	-1.5%			Lobster	-8.3%			Lobster	-2.0%
		Lobster	-0.6%			White Seabass	-9.4%			White Seabass	-2.0%
		White Seabass	-4.0%			Yellowtail	-6.4%			Yellowtail	-2.2%
	Kayak	Ca. Halibut	-8.8%			Ca. Halibut	-4.7%			Ca. Halibut	-1.7%
		Calico Bass	-5.1%		Calico Bass	-6.4%	Calico Bass		-6.6%		
		Private Vessel	Ca. Halibut		-1.9%	White Seabass	-6.6%		White Seabass	-13.1%	
	Calico Bass		-3.7%		Yellowtail	-5.4%	Yellowtail		-11.6%		
	Rockfish		-2.5%		Ca. Halibut	-4.5%	Ca. Halibut		2.0%		
Ventura	Dive	Ca. Halibut	-1.7%	Orange County	Private Vessel	Calico Bass	-2.9%	Private Vessel	Ca. Halibut	-2.0%	
		Lobster	2.7%			Sand Bass	-1.6%		Calico Bass	0.3%	
		White Seabass	-12.5%			White Seabass	-2.4%		Sand Bass	-4.4%	
		Yellowtail	-1.6%			Ca. Halibut	-8.4%		White Seabass	-3.5%	
	Kayak	Ca. Halibut	-4.8%			Lobster	-4.0%		Ca. Halibut	-8.4%	
		Calico Bass	-5.4%		White Seabass	-3.5%	Lobster		-4.0%		
		Rockfish	1.8%		Yellowtail	-5.2%	White Seabass		-3.5%		
	Private Vessel	White Seabass	-10.0%		Ca. Halibut	-3.4%	Calico Bass		-1.9%		
		Ca. Halibut	-1.5%		Calico Bass	-1.9%	White Seabass		-5.6%		
Calico Bass		-5.2%	White Seabass	-5.6%	Yellowtail	-6.6%					
Rockfish		-2.7%	Yellowtail	-6.6%	Ca. Halibut	-1.5%					
Private Vessel	White Seabass	-2.6%	Ca. Halibut	-1.5%	Calico Bass	-1.3%					
	Ca. Halibut	-1.5%	Calico Bass	-1.3%	Sand Bass	-0.5%					
	Calico Bass	-5.2%	Sand Bass	-0.5%	White Seabass	-2.1%					
	Rockfish	-2.7%	White Seabass	-2.1%							

- In all but two instances, the % impact on value decreased from round 1 to round 3.