

Marine Life Protection Act Initiative



Introduction to MarineMap and its Use within the MPA Planning Process

Evan Fox, Principal Planner, MLPA Initiative

**Presentation to the South Coast Regional Stakeholder Group
November 18, 2008 • Ventura, CA**



Presentation Overview

- Background
- MarineMap
 - What is MarineMap?
 - How will the SCRSG and public interact with the tool?
 - How will MarineMap be used within the marine protected area (MPA) planning process?
- Next Steps



Background Perspective

Marine Protected Area (MPA) Planning Involves Variety of Tools and Support

- Print copy maps, charts
- An MPA decision-support tool
- MLPA Initiative team for planning support, GIS analysis, facilitation
- Science advisory team for scientific input and evaluation
- Bluer ribbon task force for policy and guidance
- Public input
- Etc.



Decision-Support Tool

A decision-support tool is one that helps inform and support regional stakeholders as they develop marine protected area proposals through an iterative process.

- There was an identified need for a more robust and user-friendly, decision-support tool
- MarineMap was developed to address that need



MarineMap: What is it?

- Online decision-support tool that provides spatial information
- Interactive mapping tool that offers multiple capabilities
 - View data layers
 - Develop, store, and share MPA concepts
 - Generate preliminary reports relative to science guidelines



MarineMap: Use of this Tool

Located at <http://marinemap.org/marinemap/>

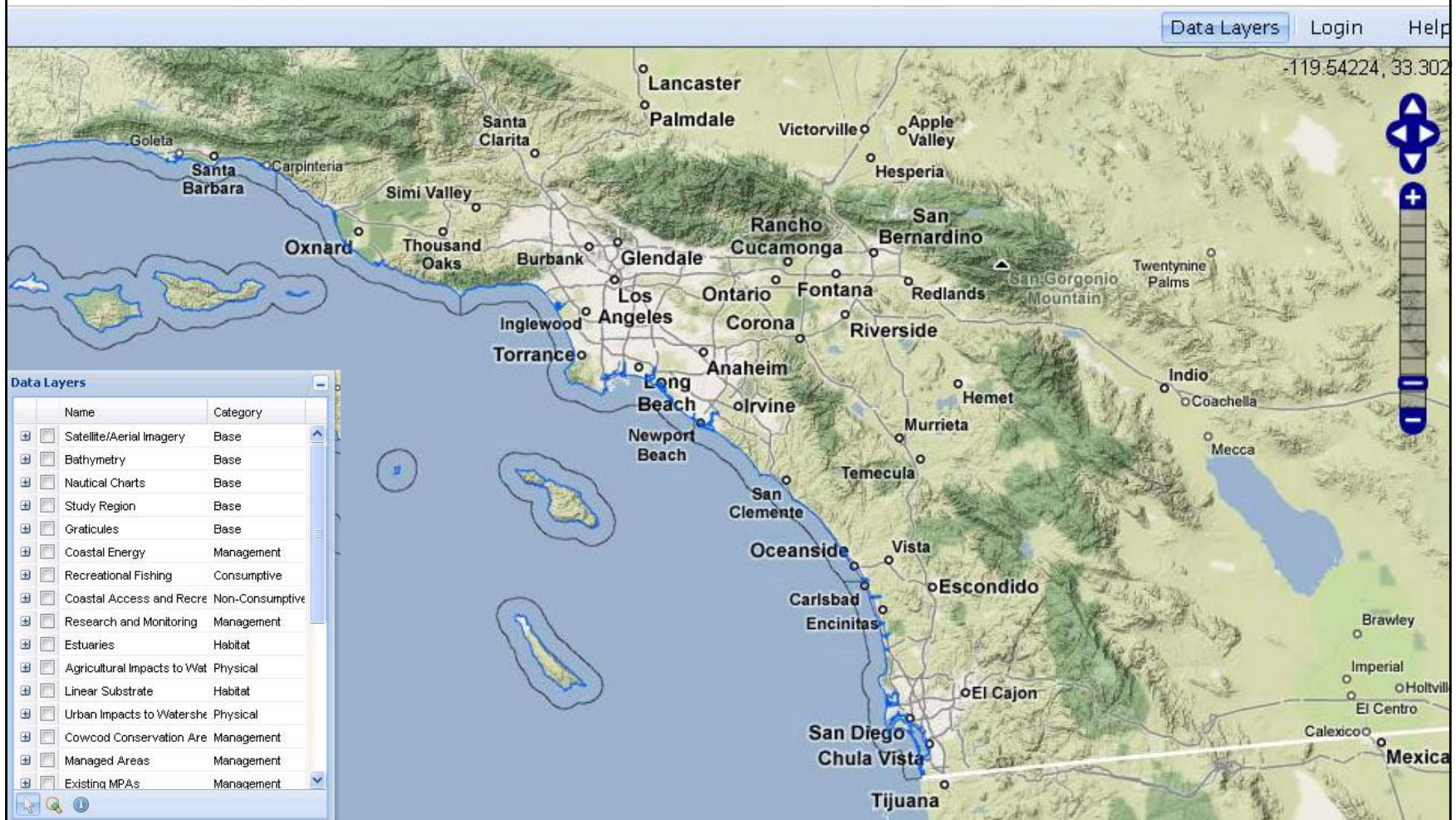
MarineMap Capabilities

- Ability to view data layers and draft MPA proposals
- Draw MPA concepts and assemble MPA arrays
- Enter MPA attribute information
- Receive basic feedback on MPA arrays



Basic Capabilities: MarineMap

Go to the website: (<http://marinemap.org/marinemap/>)

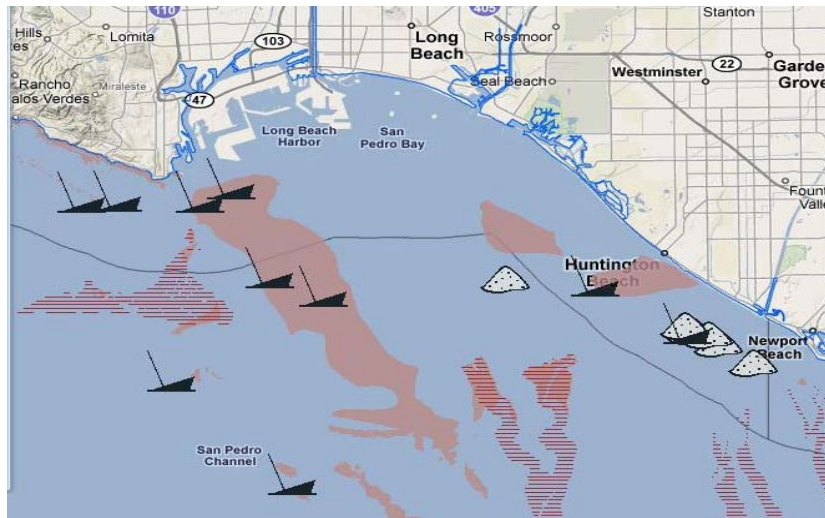







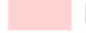
Basic Capabilities: Data Layers

Example: Hard and Soft Substrata

- Display any data layer
- Select multiple data layers
- Sort data layers



Data Layers

	Name ▲	Category
<input type="checkbox"/>	Graticules	Base
<input checked="" type="checkbox"/>	Hard and Soft Substrata	Habitat
<i>Description: Hard and Soft Substrata</i>		
 Shipwrecks		
 Artificial Reefs		
 Submarine Canyons		
 Hard Substrate		
<i>Metadata: No Metadata</i>		
<input type="checkbox"/>	Isobaths	Base

Navigation icons: mouse cursor, zoom in, zoom out, info.

Basic Capabilities: Zoom

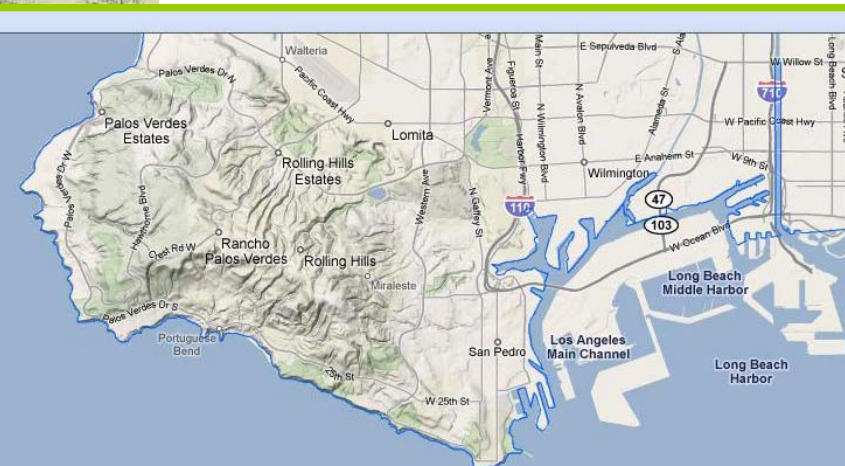
Original View

Click to zoom in or out



MarineMAP Decision Support Tool

Name	Category
<input type="checkbox"/> Satellite/Aerial Imagery	Base
<input type="checkbox"/> Bathymetry	Base
<input type="checkbox"/> Nautical Charts	Base
<input type="checkbox"/> Study Region	Base
<input type="checkbox"/> Graticules	Base
<input type="checkbox"/> Coastal Energy	Management
<input type="checkbox"/> Recreational Fishing	Consumptive
<input type="checkbox"/> Coastal Access and Recre	Non-Consumptive
<input type="checkbox"/> Research and Monitoring	Management
<input type="checkbox"/> Estuaries	Habitat
<input type="checkbox"/> Agricultural Impacts to Wat	Physical
<input type="checkbox"/> Linear Substrate	Habitat
<input type="checkbox"/> Urban Impacts to Watershe	Physical
<input type="checkbox"/> Cowcod Conservation Are	Management
<input type="checkbox"/> Managed Areas	Management
<input type="checkbox"/> Existing MPAs	Management

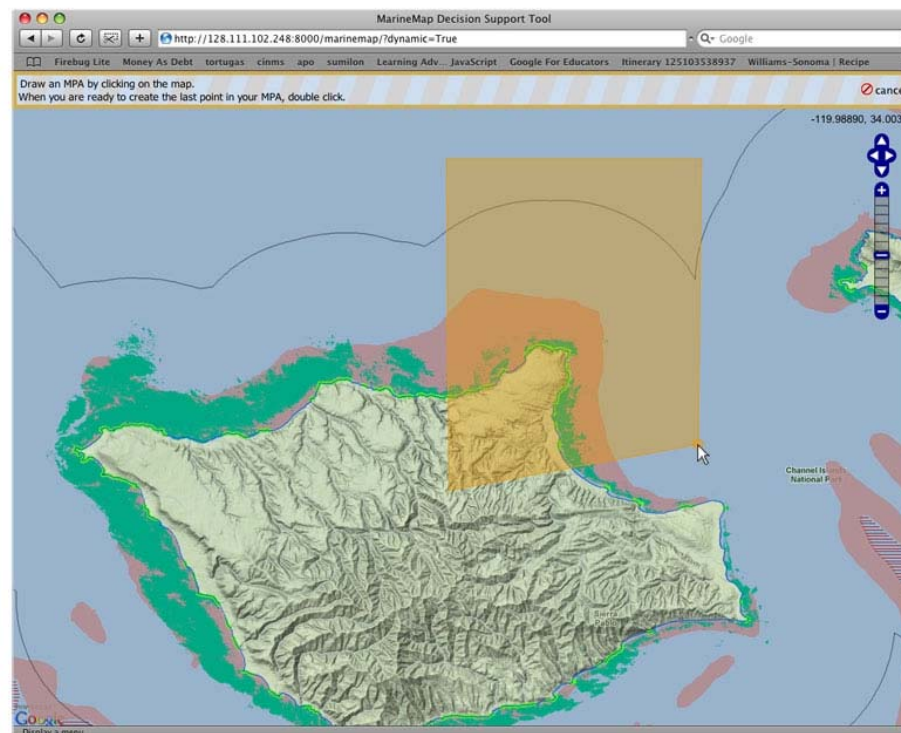


View after clicking on zoom in



Additional Capabilities: Draw MPAs

- Draw MPA concepts
- Assign attributes
- Assemble MPAs into arrays

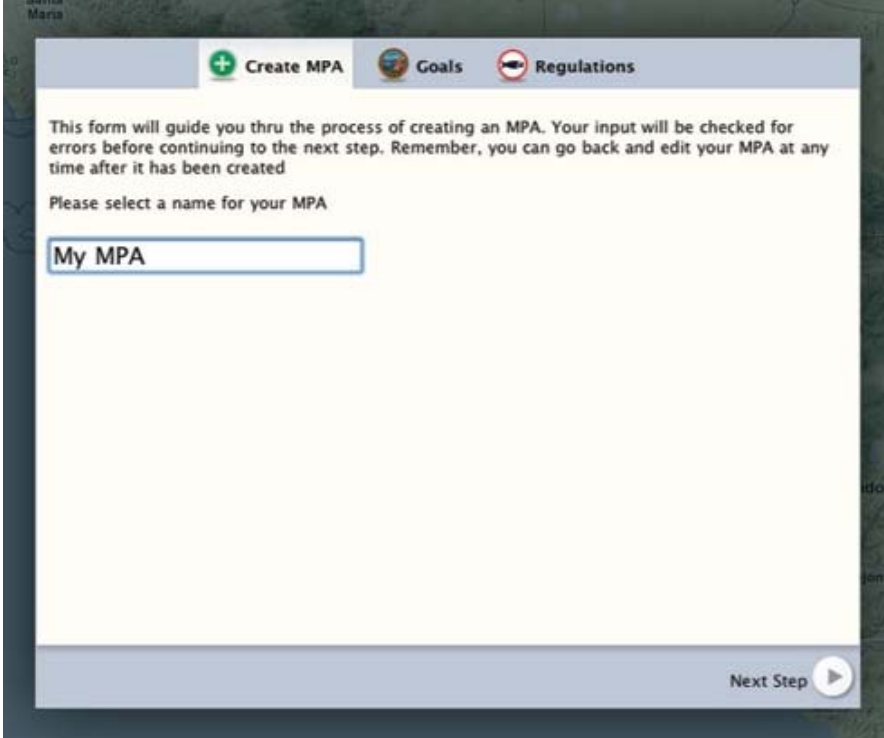




Additional Capabilities: Attributes

Assign attributes

- MPA name
- Proposed designation (SMR, SMCA, SMP)
- Proposed regulations
- Goals and objectives
- Comments, notes, etc




Maria

[+ Create MPA](#) [Goals](#) [Regulations](#)

This form will guide you thru the process of creating an MPA. Your input will be checked for errors before continuing to the next step. Remember, you can go back and edit your MPA at any time after it has been created

Please select a name for your MPA

Next Step 



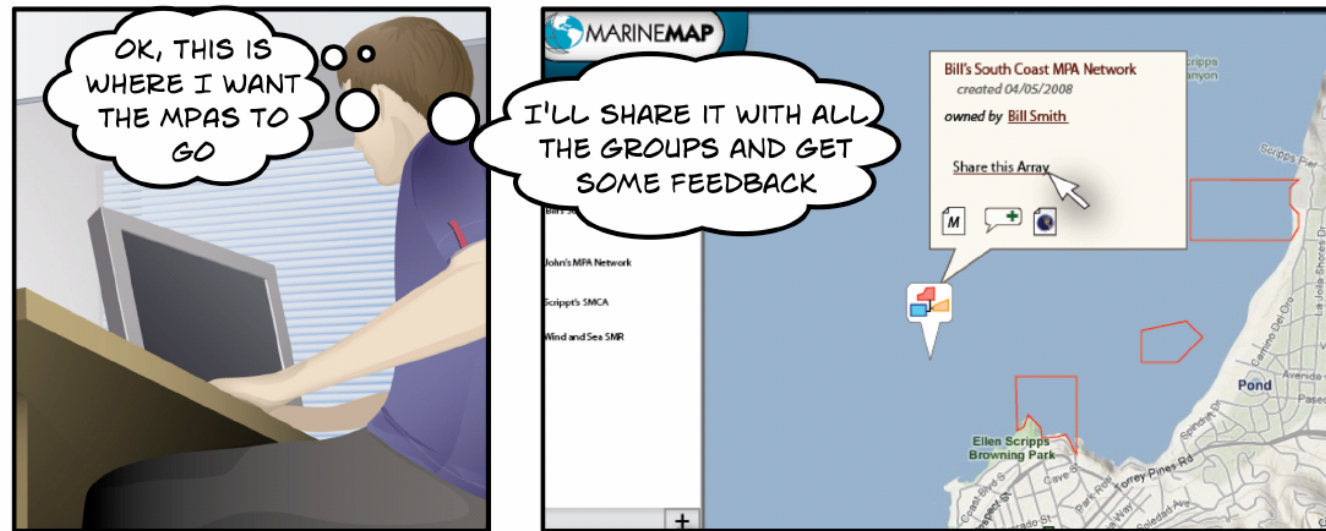
Additional Capabilities: Share & Report

Options for sharing MPA ideas

- Set as private or
- Share and exchange with a select group

Generate basic reports on MPA array

- Area and distances
- Habitat calculations





Use within MPA Planning Process

- At SCRSG meetings or work sessions, with staff support, display data layers and generate draft MPA proposals
- Outside meetings, individual RSG members can brainstorm ideas and concepts to inform meeting discussions
- Meetings are where MPA concepts are shared and formalized
- There will be additional guidance provided on appropriate use of the MarineMap tool



Next Steps

- Tool is available to all SCRSG members; we encourage you to take advantage of this tool!
- Informal opportunity tonight to see MarineMap in action
 - Please join us to learn more
 - Ask questions
- Online training sessions in December for SCRSG
 - Sign-up sheet available to reserve your spot
- Passwords distributed after training
- Send comments or questions to:
help@lists.marinemap.org



A Special Thanks to the...

MarineMap team, including:

- Alexei Peters and Dennis Wuthrich (Farallon Geographics)
- Chad Burt and Colin Ebert (University of California, Santa Barbara)
- Chris Macdonald, Jared Kibele, and Will McClintock (UC Santa Barbara and MLPA Initiative staff)
- Matt Merrifield (The Nature Conservancy and MLPA Initiative staff)
- Charles Steinback, Mike Mertens, Scott Fletcher and Tim Welch (Ecotrust)

Received additional support from Emily Saarman and MLPA Initiative planning staff