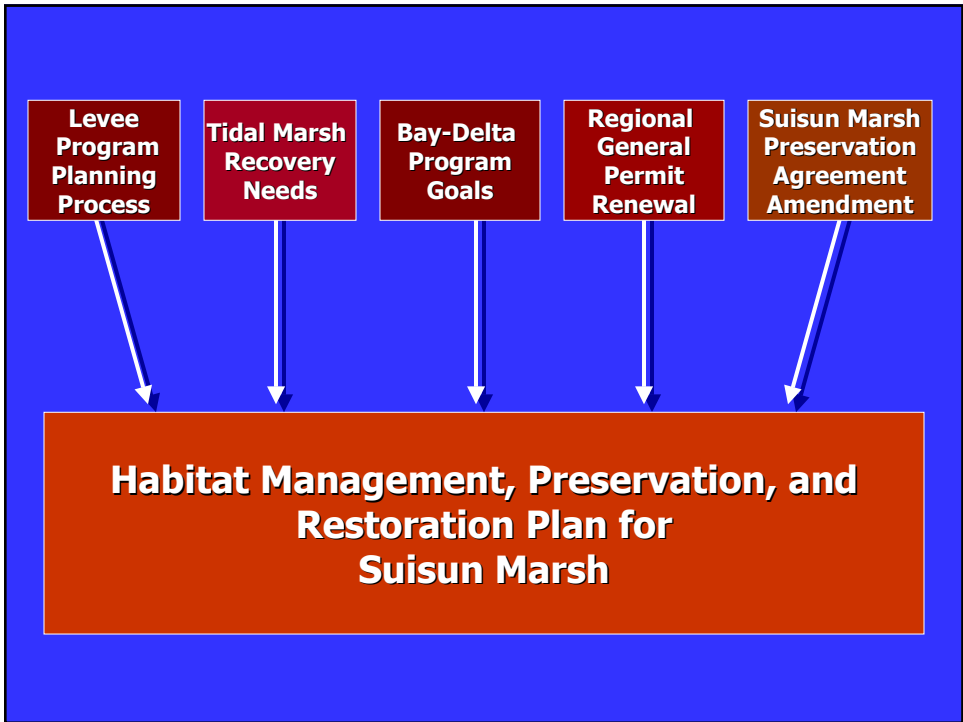


**Welcome  
Management, Preservation  
and Restoration Plan  
for the Suisun Marsh**

**November/December 2003**

**Benefits of the Plan ... or  
What we will have when we  
are done**

- **Stable regulatory climate**
- **Agency coordination & collaboration on management decisions and activities**
- **Stakeholder input**
- **A balance between the habitat needs of managed wetlands species and the habitat needs of tidal-marsh-dependent species**
- **Consistency with Bay-Delta Program Goals**
- **Development of a levee management strategy**
- **Allow amendment to SMPA**
- **Facilitate investments in Suisun for beneficial uses**



# Chronology of Marsh Activities

1974

1994

2000

2003

## **1974-1994** **Focus on Implementation**

- Suisun Marsh Preservation Acts (1974 and 1977)
- Suisun Marsh Protection Plan (1976)
- SWRCB Water Rights Decision -1485 (1978)
- Initial Facilities (1978)
- Suisun Marsh Plan of Protection (1984)
- Suisun Marsh Preservation Agreement (1987)
- Begin Operation of Suisun-Marsh Salinity Control Gates (1989)
- Planning for Western Salinity Control Project (1989-1994)

## **1994-2000** **Focus on Amendment 3**

- Bay-Delta Accord (1994)
- SWRCB Orders 95-6 and 98-9 (1995, 1998)
- Suisun Marsh Preservation Agreement Amendment Three negotiations (1995-1999)
- Suisun Ecological Workgroup (1995)
- Suisun Marsh Flooding (1998)
- SWRCB D-1641 (1999)
- Suisun Marsh Levee Investigation Team (1998-2000)

## **2000-present** **Focus on the Charter**

- CALFED Record of Decision (2000)
- Suisun Marsh Charter Agencies begin collaboration (2000)
- Suisun Marsh Charter approved (2001)
- Charter agencies begin working on long-term implementation plan (2001)
- Charter agencies begin NEPA/CEQA planning process for Habitat Management, Preservation, and Restoration Plan for Suisun Marsh (2003)

# Charter Principal Agencies

## **U.S. Bureau of Reclamation: NEPA Co-Lead Agency**

Mission: To manage, develop, and protect water and related resources in an environmentally and economically sound manner in the interest of the American public.

## **U. S. Fish and Wildlife Service: NEPA Co-Lead Agency**

Mission: Working with others to conserve, protect, and enhance fish, wildlife, and plants and their habitats for the continuing benefit of the American people.

# Charter Principal Agencies

## **National Marine Fisheries Service: NEPA Cooperating Agency**

Mission: Stewardship of living marine resources through science-based conservation and management and the promotion of healthy ecosystems.

## **California Department of Water Resources: CEQA Responsible Agency**

Mission: To manage the water resources of California in cooperation with other agencies to benefit the State's people, and to protect, restore, and enhance the natural and human environments.

# Charter Principal Agencies

## **California Department of Fish and Game: CEQA Lead Agency**

Mission: To manage California's diverse fish, wildlife and plant resources, and the habitats upon which they depend, for their ecological values and for their use and enjoyment by the public.

## **Suisun Resource Conservation District: CEQA Responsible Agency**

Mission: The SRCDD represents the private landowners of the Suisun Marsh on a variety of issues on Federal, State, and local levels. The District provides landowners technical assistance in permitting, water control, and habitat management to ensure the wetland and wildlife values of the Suisun Marsh are sustained and enhanced.

# Charter Principal Agencies

## **California Bay-Delta Authority: CEQA Responsible Agency**

Mission: The mission of the California Bay-Delta Program is to develop and implement a long-term comprehensive plan that will restore ecological health and improve water management for beneficial uses of the Bay-Delta.

# History

- 1974 - Nejedly-Bagley-Z'Berg Suisun Marsh Protection Act
- 1976 - Suisun Marsh Protection Plan
- 1977 - Suisun Marsh Protection Act of 1977
- 1978 - State Water Resources Control Board D-1485
- 1987 - Signing of Suisun Marsh Preservation Agreement (SMPA)
- 1989 - Major new facilities fully operational
- 1994 - Bay-Delta Accord
- 1995 - Negotiations begin for Amendment 3 to SMPA
- 2000 - Identified conflict between Amendment 3 actions, Regional General Permit and ESA Recovery Actions

# History

## 2000 Record of Decision

### Program Areas

Water Quality

Levee System Integrity

Ecosystem Restoration

Water Supply Reliability

**Science: Underlies all Program Goal Areas**

# History

## 2001 - California Bay-Delta Program context

Charter Goal: Develop a regional plan that balances implementation of the CALFED Program, Suisun Marsh Preservation Agreement, and other management and restoration programs within Suisun Marsh, in a manner responsive to the concerns of stakeholders and based upon voluntary participation by private land owners.

# **NEPA/CEQA LEAD AGENCY PRESENTATION**



## **PURPOSE OF MEETING**

To solicit public comments on:

- The scope and development of a Habitat Management, Preservation, and Restoration Plan for the Suisun Marsh Programmatic Environmental Impact Statement/Report (PEIS/R)
- Issues to be addressed in the PEIS/R

# **NEPA/CEQA PROCESS**

**National Environmental Policy Act of  
1969 (NEPA)**

**California Environmental Quality Act  
(CEQA)**

## **NEPA/CEQA**

NEPA and CEQA require agencies to consider and evaluate environmental issues during planning and decision-making and to involve the public in the planning process.



## **NEPA/CEQA LEAD AGENCIES**

**CEQA - California Department of Fish and Game**

**NEPA – U. S. Fish and Wildlife Service and U. S. Bureau of Reclamation**

## **NEPA/CEQA LEAD AGENCY RESPONSIBILITY**

- **Scope**
- **Content**
- **Legal adequacy of the PEIS/R**

## **COOPERATING AGENCIES INCLUDE**

- **California Department of Water Resources**
- **Suisun Resource Conservation District**
- **California Bay-Delta Authority**
- **National Marine Fisheries Service**
- **U. S. Army Corps of Engineers**

## **PEIS/R**

Will outline the design, implementation and maintenance of specific actions needed to achieve the Suisun Marsh Plan.

Will evaluate a majority of these actions at a "programmatic" level of detail, and will require future NEPA/CEQA analysis at a site-specific level of detail as individual actions are proposed in the future.

## **PEIS/R**

Will evaluate certain specific projects at a site-specific level of detail and constitute the final NEPA/CEQA documents for those projects.

Specific projects include an amendment to the Suisun Marsh Preservation Agreement.

## **OBJECTIVES OF SCOPING**

- 1. Ensure public involvement in the environmental review process.**
- 2. Determine which specific impacts must be evaluated in the PEIS/R.**
- 3. Establish a reasonable range of alternatives.**
- 4. Solicit ideas on potential mitigation measures.**
- 5. Identify the scope of issues to be discussed in order to adequately and accurately address potential impacts of actions as they relate to permitting and approval authority.**

## **GEOGRAPHIC SCOPE**

### **Suisun Marsh**

That portion of San Francisco Bay downstream from the Sacramento-San Joaquin Delta and upstream from the Central San Francisco Bay.

Falls into the Suisun Marshlands and Bay Ecological Management Unit of the Bay-Delta Program's Suisun Marsh and North San Francisco Bay Ecological Management Zone.

## **GEOGRAPHIC SCOPE**

The Suisun Marsh Plan would serve as the Bay-Delta Program's implementation plan for the Suisun Marsh Ecological Management Zone.

# **PROGRAM PURPOSE AND NEED**



## **SUISUN MARSH PLAN GOALS**

- Ecological Processes
- Habitats
- Levee System Integrity
- Non-Native Invasive Species
- Water and Sediment Quality
- Public Use and Waterfowl Hunting

## **Preliminary Goal 1: Ecological Processes**

- Rehabilitate Natural Processes
- Support Aquatic and Terrestrial Biotic Communities and Habitats
- Favor native species
- Focus on Waterfowl and Sensitive Species

## **Preliminary Goal 2: Habitats**

- Protect, Restore, and Enhance Habitat Types
- Support Ecological Values
  - Species and Biotic Communities
  - Scientific Research
- Support Public Values
  - Recreation
  - Aesthetics

### **Preliminary Goal 3: Levee System Integrity**

- Maintain and Improve Suisun Marsh Levee System Integrity
- Provide Long-term Protection for Multiple Resources

### **Preliminary Goal 4: Non-Native Invasive Species**

- Prevent the Establishment of Additional Non-native Species
- Reduce Ecological and Economic Impacts of Established Non-native Species

## **Preliminary Goal 5: Water and Sediment Quality**

- Improve and/or Maintain Water and Sediment Quality
- Provide Good Quality Water for All Beneficial Uses
- Support Healthy and Diverse Aquatic Ecosystem
- Eliminate Toxic Impacts to Aquatic Organisms, Wildlife, and People

## **Preliminary Goal 6: Public Use and Waterfowl Hunting**

- Maintain Waterfowl Hunting Heritage
- Maintain Surrounding Communities
- Increase Awareness of Marsh Ecological Values



## **Preliminary Issues**

- Identified Preliminary List of Related Issues and Conflicts
- Issues Not Exclusive to One Goal
- Seeking Input Today and During Scoping

## **Preliminary Goal 1: Ecological Processes Issues**

- Effects on Fish, Wildlife and Plants
- Subsidence of Leveed Areas
- Degradation of Infrastructure
- Isolation of Managed Wetlands and Suisun Marsh Plain from Tidal Influence

## **Preliminary Goal 2: Habitats Issues**

- Reduced Availability of Habitat for tidal Marsh Dependent Species
- Impacts on Tidal Marsh Dependent Species
- Resource Management Conflicts
- Entrainment of Fish from Unscreened Water Diversions

## **Preliminary Goal 3: Levee System Integrity Issues**

- Difficult to Maintain Exterior Levees
  - Limitations on Material, High Costs and Other Constraints
- Lack of a Coordinated Emergency Response Plan

## **Preliminary Goal 4: Non-Native Invasive Species Issues**

- Abundance of Non-native Invasive Species in the Marsh
- Presence Detrimental to Native Species
  - Competition
  - Predation

## **Preliminary Goal 5: Water and Sediment Quality Issues**

- Methyl Mercury
- Effects of Planned Breaches or Levee Failures on Marsh and Delta Salinity Levels
- Low Dissolved Oxygen Levels
- Localized Higher Salinity and Decreased Tide Stage

## **Preliminary Goal 6: Public Use and Waterfowl Hunting Issues**

- Awareness of Suisun Marsh and Resources
- Potential Impacts on Waterfowl Hunting Heritage, and Hunting Success
- Landowner Willingness and Cooperation to Change Management
- Secondary Economic Impacts on the Local Economy
- Impacts to Unique Ecological and Cultural Characteristics