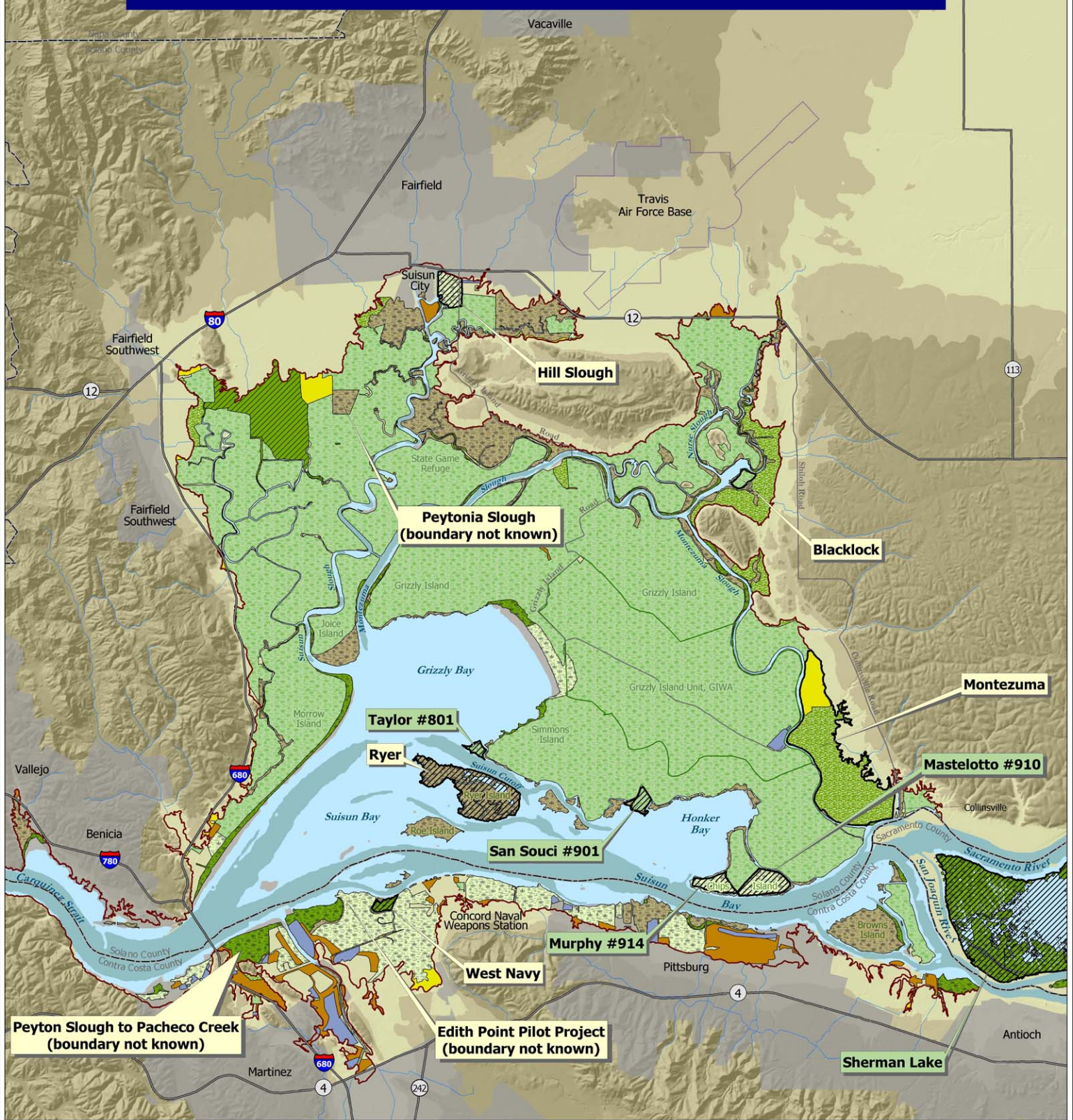


SUISUN TIDAL WETLAND RESTORATION PROJECTS

Completed and Planned Projects in Suisun Bay, San Francisco Estuary, California

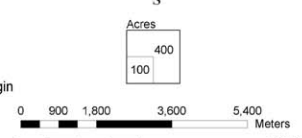
October 2003



- Tidal Marsh**
- High Elevation Tidal Marsh (7,211 acres)
 - Low/Mid Elevation Tidal Marsh (2,019 ac)
- Muted Tidal Marsh**
- Muted Tidal Marsh (4,553 ac)
- Wetland Project**
- Completed Project
 - Planned Project
- Planned Project Name**
- Completed Project Name**

- Diked Baylands**
- Managed Marsh (47,758 ac)
 - Diked Marsh (1,883 ac)
 - Farmed Bayland (1,464 ac)
 - Grazed Bayland (3,273 ac)
 - Ruderal (807 ac)
 - Storage or Treatment Basin (776 ac)
- Elevation (NGVD feet)**
- >20
 - 10 to 20
 - 5 to 10

- Bay and Ocean**
- Deep Bay or Ocean
 - Shallow Bay
 - Tidal Mudflat
- Reference Features**
- River or Creek
 - Highway
 - Paved Road
 - County Boundary
 - Historic Baylands Margin
 - Urban Area



Data sources: USGS (1986 - 1998), TIGER (2000), GAP (1998), EcoAtlas (1998), DWR (Various), Teal (1991), DWR (2001)

Produced by Wetlands and Water Resources, Sept. 2003
GIS Production/Carthography by Jake Schweitzer
Rest-Projects_1007_E-P_101403.mxd

Map Projection: UTM Zone 10N, NAD27