

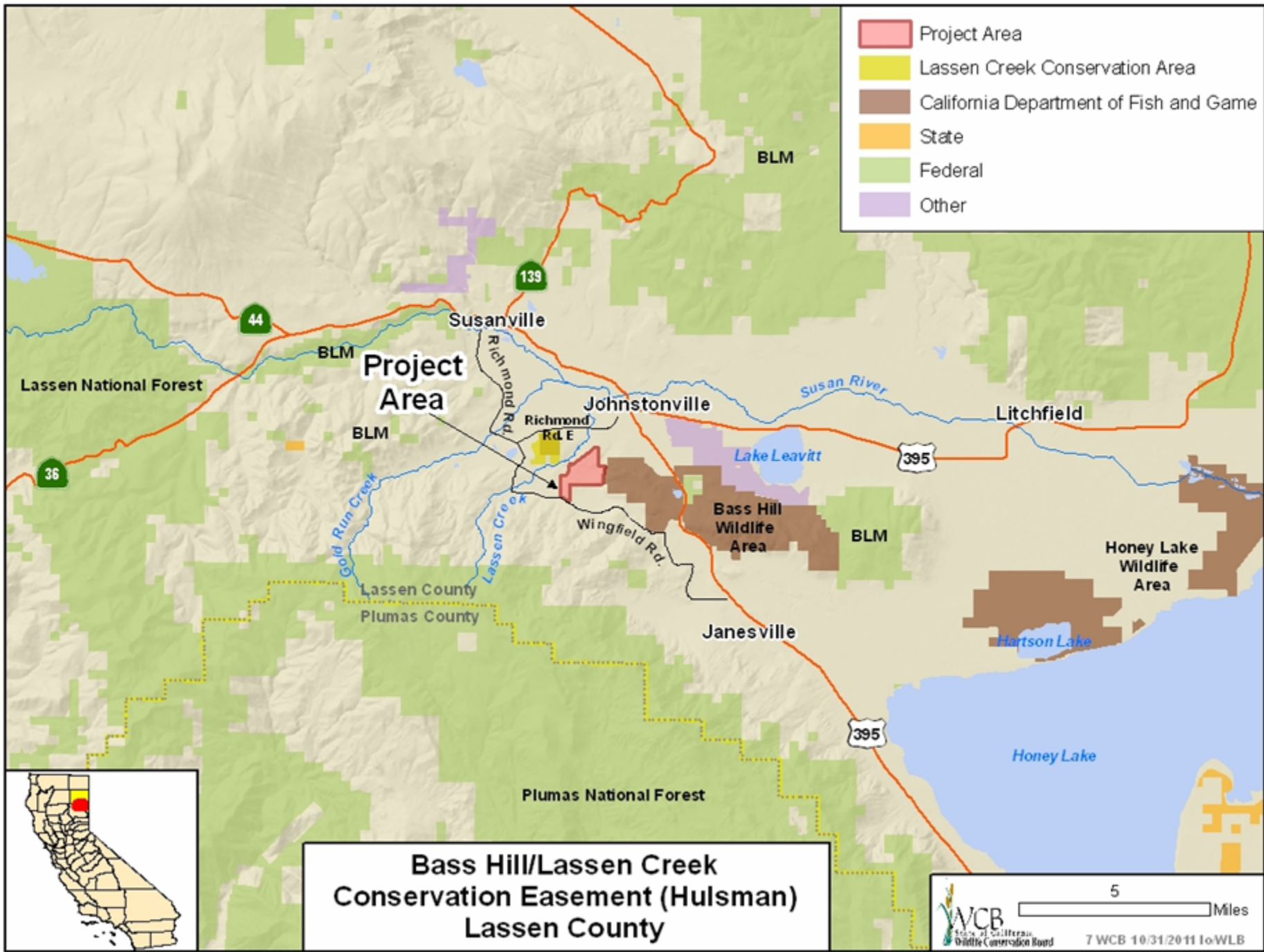


December 8, 2011  
Wildlife Conservation Board  
Meeting

10:00 AM

State Capitol, Room 112  
Sacramento, CA 95814

Photo by Truckee Donner Land Trust



- Project Area
- Lassen Creek Conservation Area
- California Department of Fish and Game
- State
- Federal
- Other

**Bass Hill/Lassen Creek  
Conservation Easement (Hulsman)  
Lassen County**

\*#7. Bass Hill/Lassen Creek Conservation Easement  
(Hulsman), Lassen County



- Hulsman Ranch Conservation Easement lies adjacent to forested hills. Three types of environments are represented on the entire Hulsman Ranch (footland hills, forested area and mountain range). Photo courtesy of Lassen Land Trails and Trust.

\*#7. Bass Hill/Lassen Creek Conservation Easement  
(Hulsman), Lassen County



- Waterfowl enjoying the water feature on the Hulsman Conservation Easement. Photo courtesy of Lassen Land Trails and Trust.

\*#7. Bass Hill/Lassen Creek Conservation Easement  
(Hulsman), Lassen County



- View of water feature on Hulsman Ranch Conservation Easement

\*#7. Bass Hill/Lassen Creek Conservation Easement (Hulsman), Lassen County

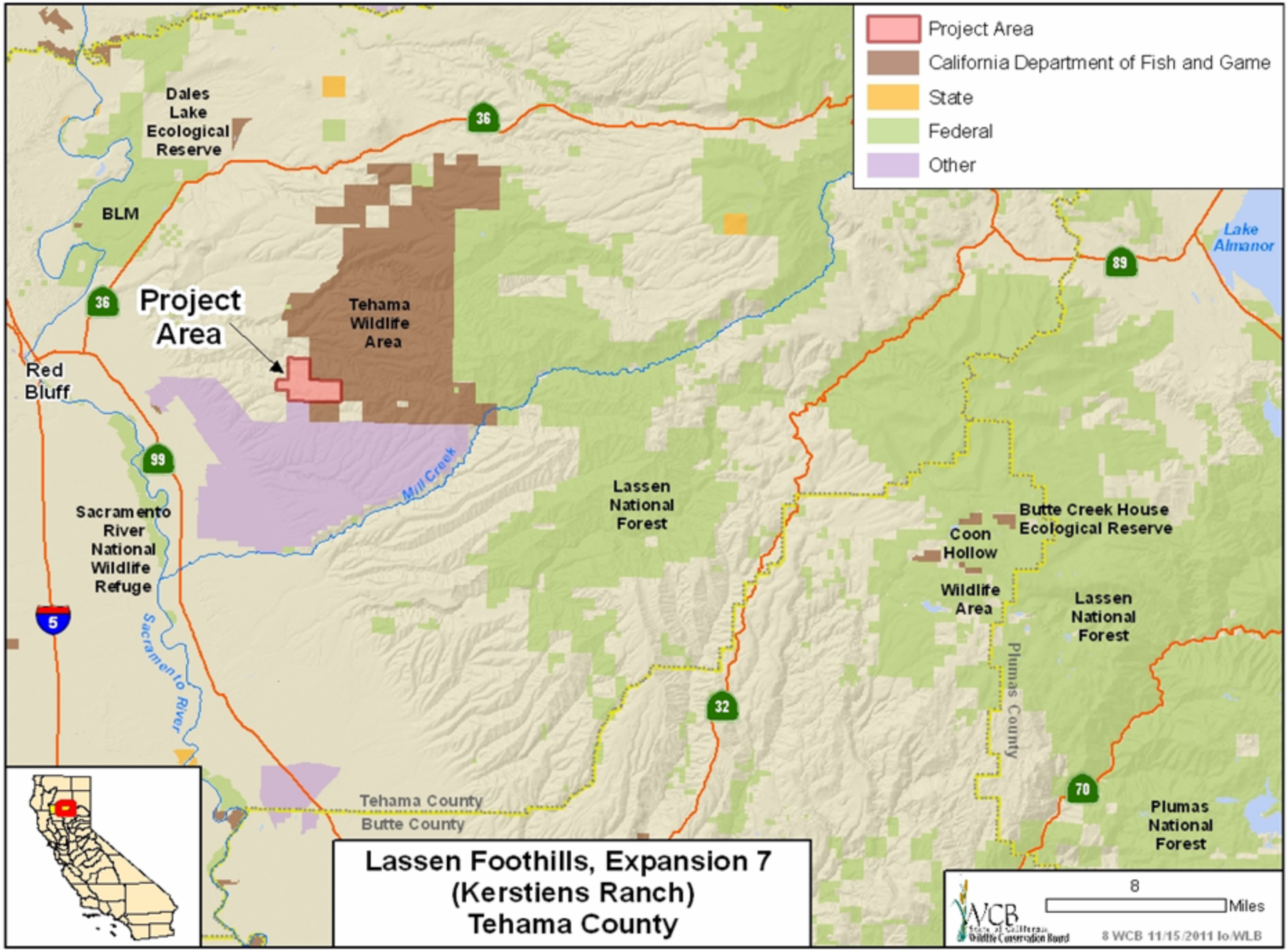


- View of developments that border the conservation easement property

**\*#7. Bass Hill/Lassen Creek Conservation Easement (Hulsman), Lassen County**



- Hannah Tangeman, one of the General Partners of the Hulsman Ranch Partnership. Photo courtesy of Lassen Land Trails and Trust.



- Project Area
- California Department of Fish and Game
- State
- Federal
- Other

**Lassen Foothills, Expansion 7  
(Kerstiens Ranch)  
Tehama County**

8 Miles

WCB  
 State of California  
 Wildlife Conservation Board  
 8 WCB 11/15/2011 to WLB





\*#8. Lassen Foothills, Expansion 7  
(Kerstiens Ranch ), Tehama County



- Looking northeast towards Mount Lassen

\*#8. Lassen Foothills, Expansion 7  
(Kerstiens Ranch ), Tehama County



- One of the many wooded riparian areas on the property.

\*#8. Lassen Foothills, Expansion 7  
(Kerstiens Ranch ), Tehama County



- Looking east over the property

\*#8. Lassen Foothills, Expansion 7  
(Kerstiens Ranch ), Tehama County

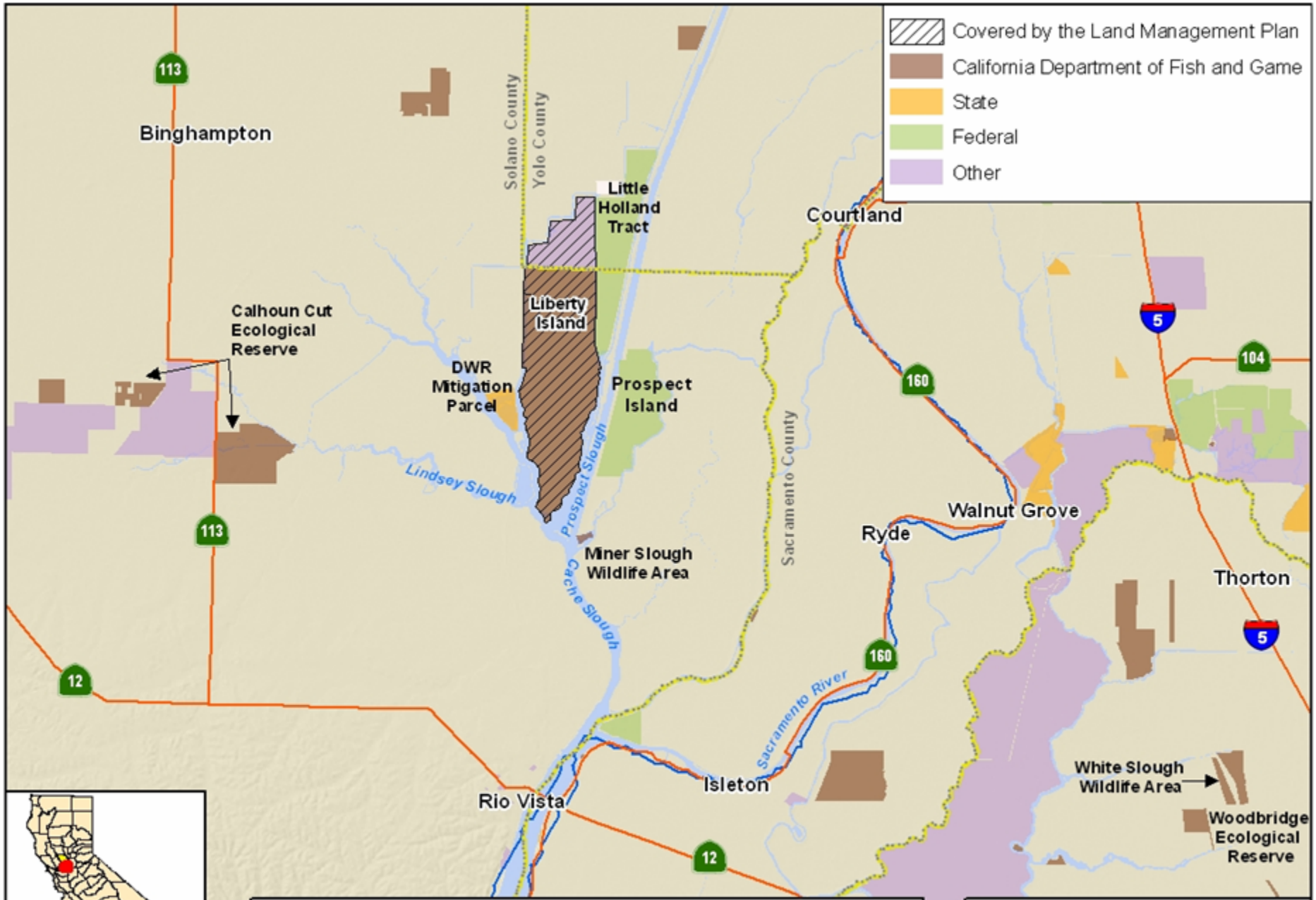






- Looking at a rock wall which runs across a majority of the property

\*#8. Lassen Foothills, Expansion 7  
(Kerstiens Ranch ), Tehama County




- Deer herd grazing in one of the many meadows



-  Covered by the Land Management Plan
-  California Department of Fish and Game
-  State
-  Federal
-  Other



**DFG Land Management Plan, Bay Delta Region  
Yolo and Solano Counties**


4 Miles  
State of California  
Wildlife Conservation Board  
9 WCB 10/31/2011 10-WLB

\*#9. DFG Land Management Plan, Bay Delta Region,  
Yolo and Solano Counties



- Looking east over the upland portion towards West Sacramento

\*#9. DFG Land Management Plan, Bay Delta Region,  
Yolo and Solano Counties



- Tidal marsh area



\*#9. DFG Land Management Plan, Bay Delta Region,  
Yolo and Solano Counties

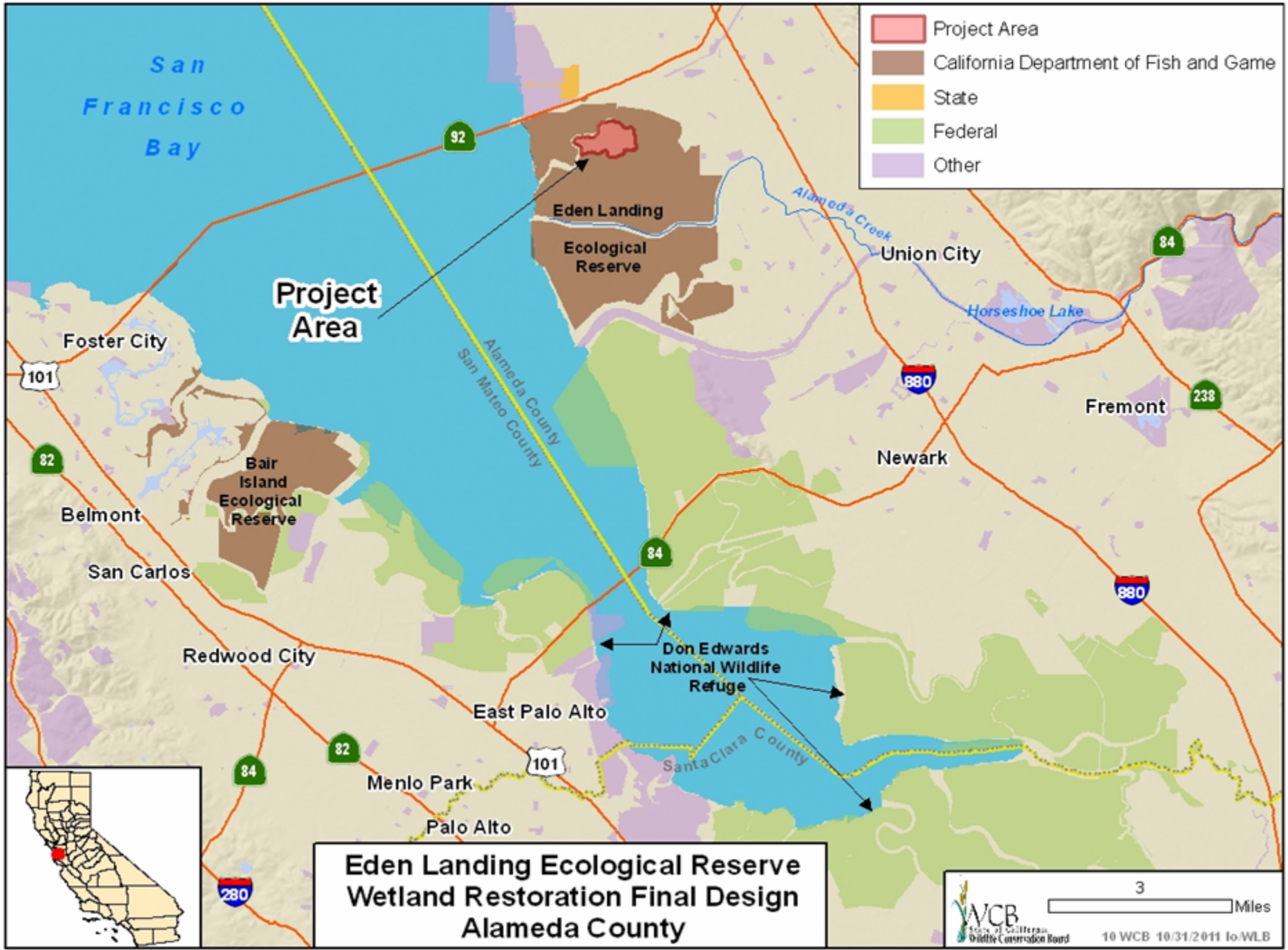


- One of the sloughs going through the island

\*#9. DFG Land Management Plan, Bay Delta Region,  
Yolo and Solano Counties

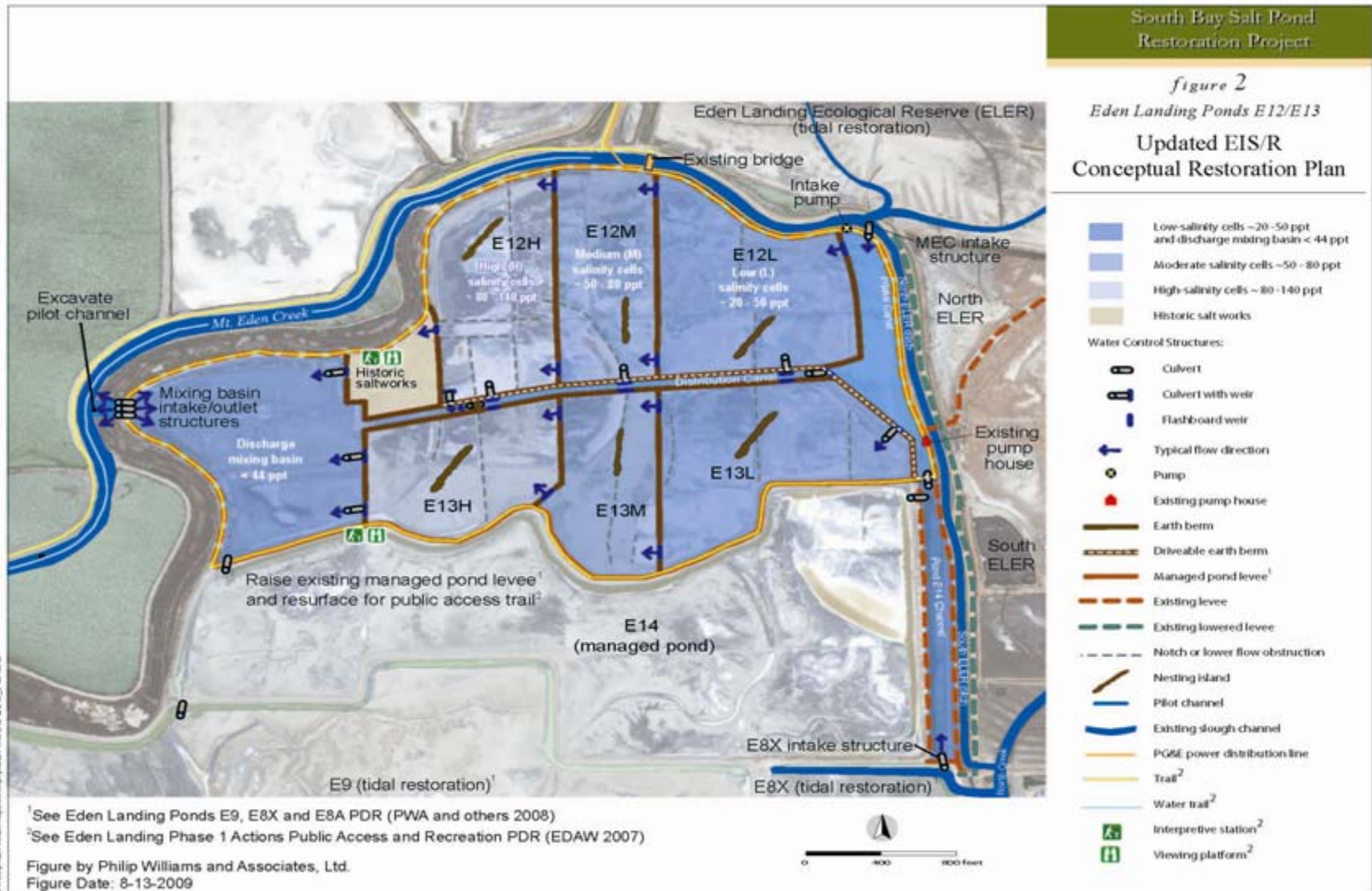


- Looking southeast towards the Deep Water Shipping Canal;
- Islands showing in the photos are floating duck blinds



**Eden Landing Ecological Reserve  
Wetland Restoration Final Design  
Alameda County**

# \*#10. Eden Landing Ecological Reserve, Wetland Restoration Final Design, Alameda County



\*#10. Eden Landing Ecological Reserve, Wetland Restoration Final Design, Alameda County



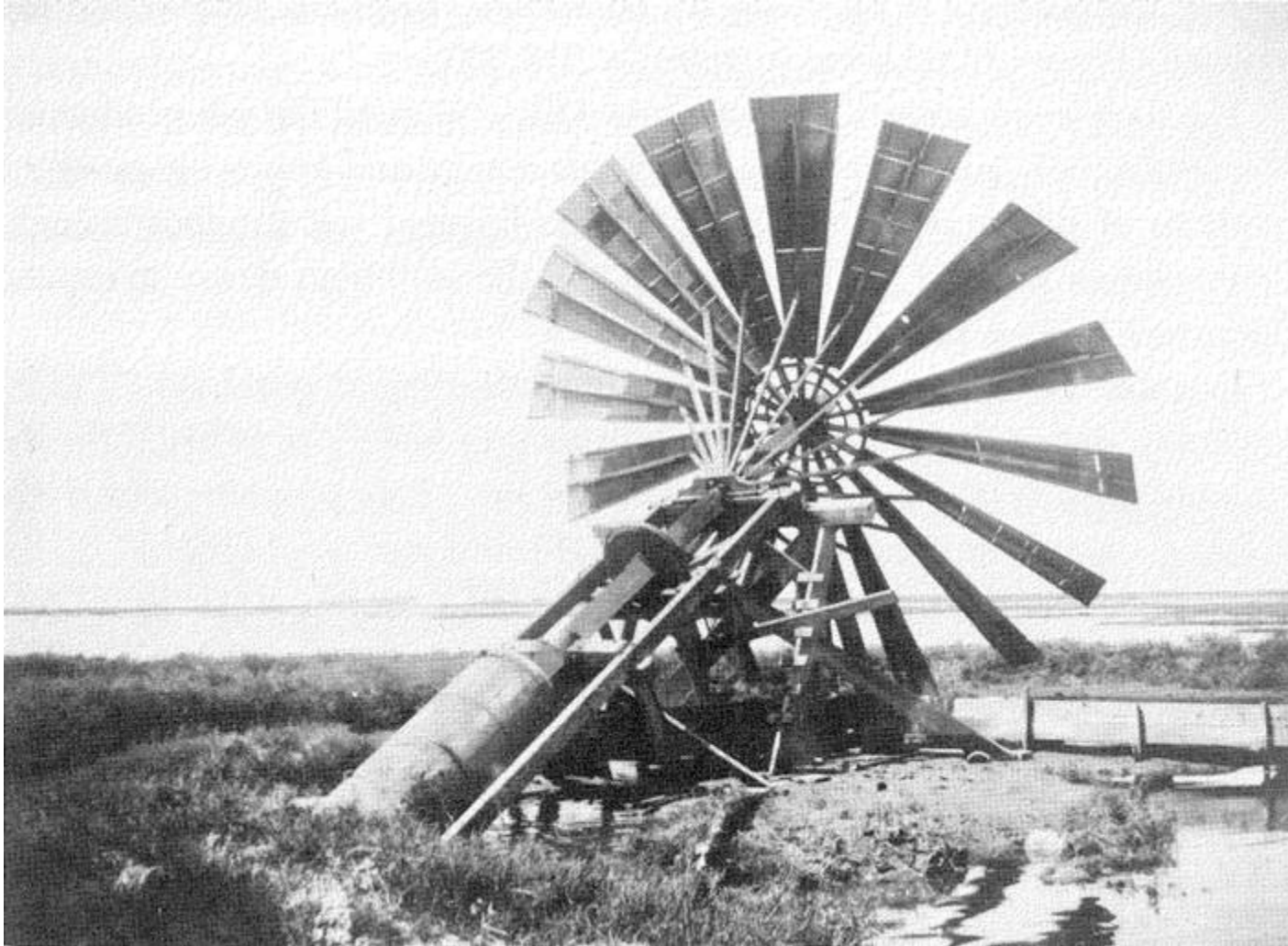
- Existing levees to be renovated. Photo courtesy Phillip Williams and Associates

\*#10. Eden Landing Ecological Reserve, Wetland Restoration Final Design, Alameda County



- Historic Archimedes Screws. Photo courtesy Ducks Unlimited, Inc.

\*#10. Eden Landing Ecological Reserve, Wetland Restoration Final Design, Alameda County



- Archimedes Screw in operation, circa 1900. Photo courtesy Leslie Salt Company and Phillip Williams and Associates.

\*#10. Eden Landing Ecological Reserve, Wetland Restoration Final Design, Alameda County



- Historic salt works. WCB file photo.

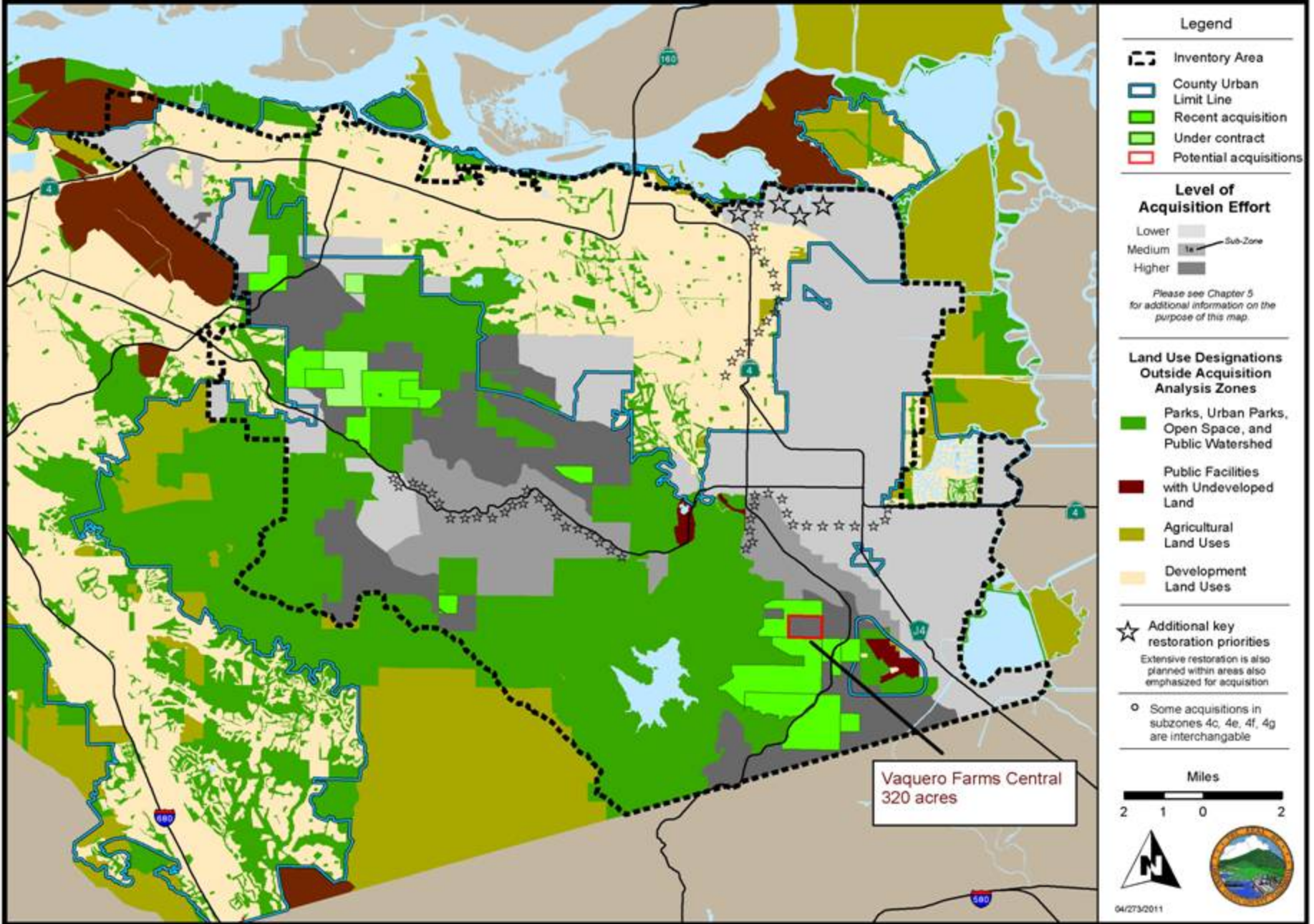


\*#10. Eden Landing Ecological Reserve, Wetland Restoration Final Design, Alameda County



- Managed former salt evaporation ponds can be remarkably productive, biologically. WCB file photo.

Proposed Vaquero Farms Central Acquisition and Consistency with HCP/NCCP Acquisition Priorities Under Maximum Urban Development Area Scenario



\*#11. San Joaquin Multi-Species Conservation Plan 2008 ,  
Vaquero Farm Central , Contra Costa County



- Looking west over the property

\*#11. San Joaquin Multi-Species Conservation Plan 2008 ,  
Vaquero Farm Central , Contra Costa County



- Looking at some of the salt grasses on the ranch

\*#11. San Joaquin Multi-Species Conservation Plan 2008 ,  
Vaquero Farm Central , Contra Costa County



- Looking east over the property

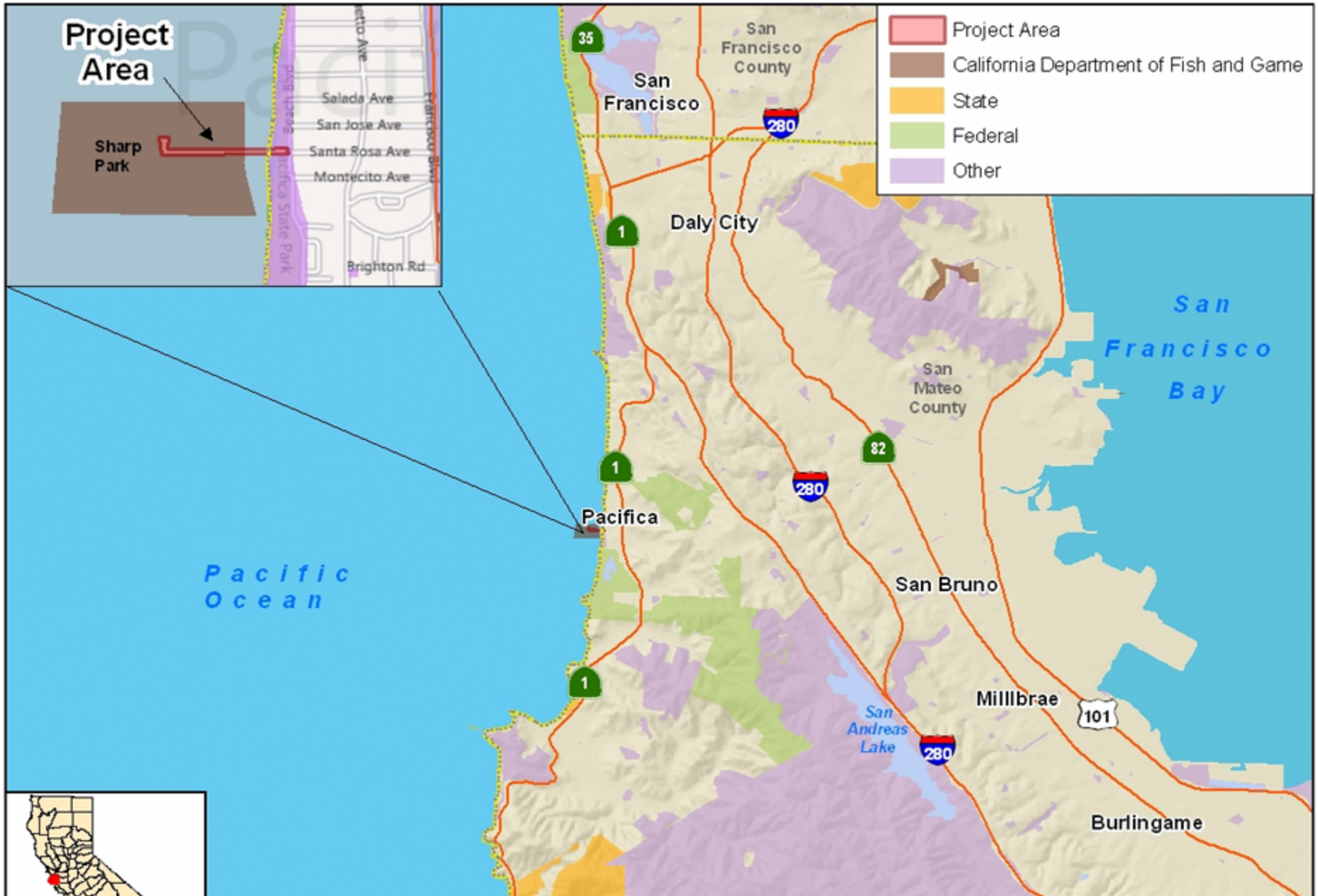
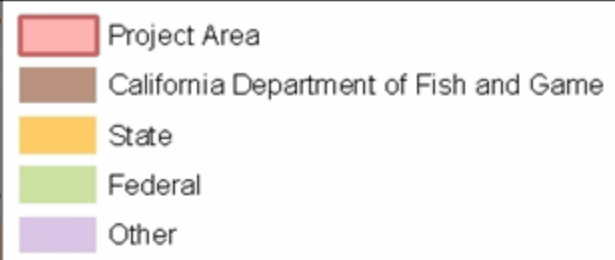
\*#11. San Joaquin Multi-Species Conservation Plan 2008 ,  
Vaquero Farm Central , Contra Costa County



- Additional salt grasses over the property

# Project Area

Sharp Park



## Pacifica Fishing Pier Improvements, Phase II San Mateo County

25 Miles

12 WCB 10/31/2011 lo-WLB

## \*#12. Pacifica Fishing Pier Improvements, Phase II, San Mateo County



- Pacifica Fishing Pier

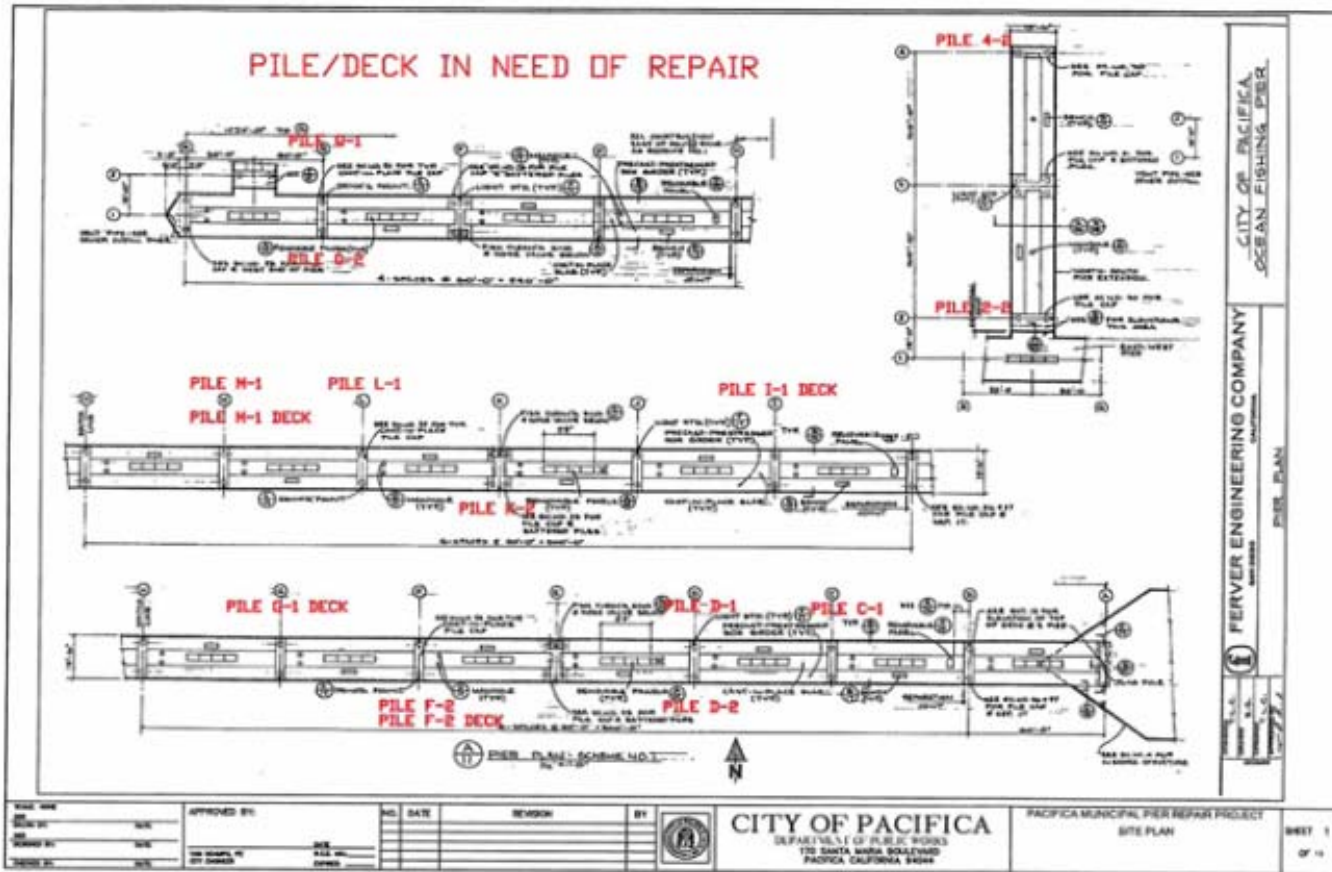


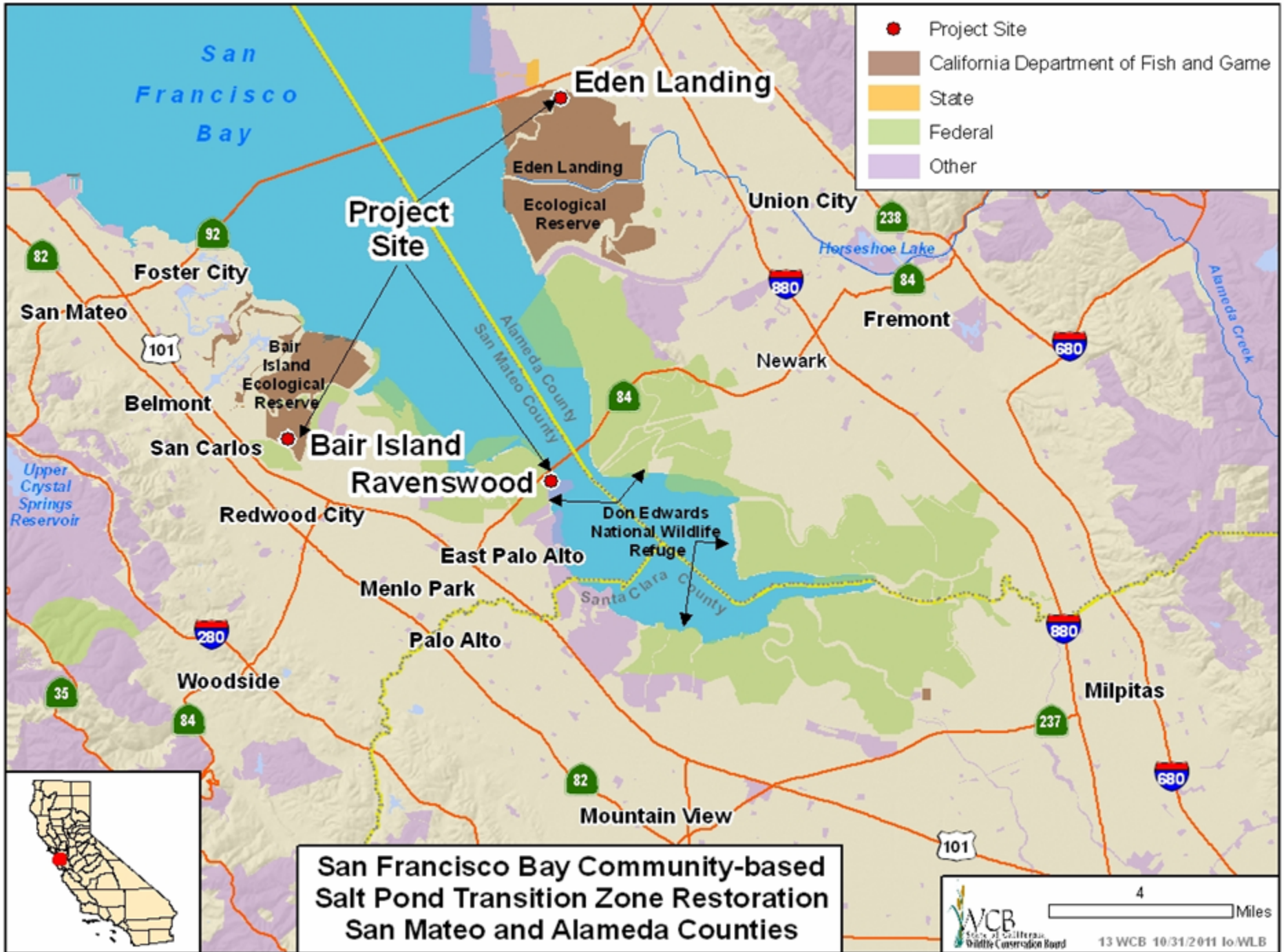
\*#12. Pacifica Fishing Pier Improvements,  
Phase II, San Mateo County



- Exposed corroding reinforcing steel on pile

# \*#12. Pacifica Fishing Pier Improvements, Phase II, San Mateo County





- Project Site
- California Department of Fish and Game
- State
- Federal
- Other

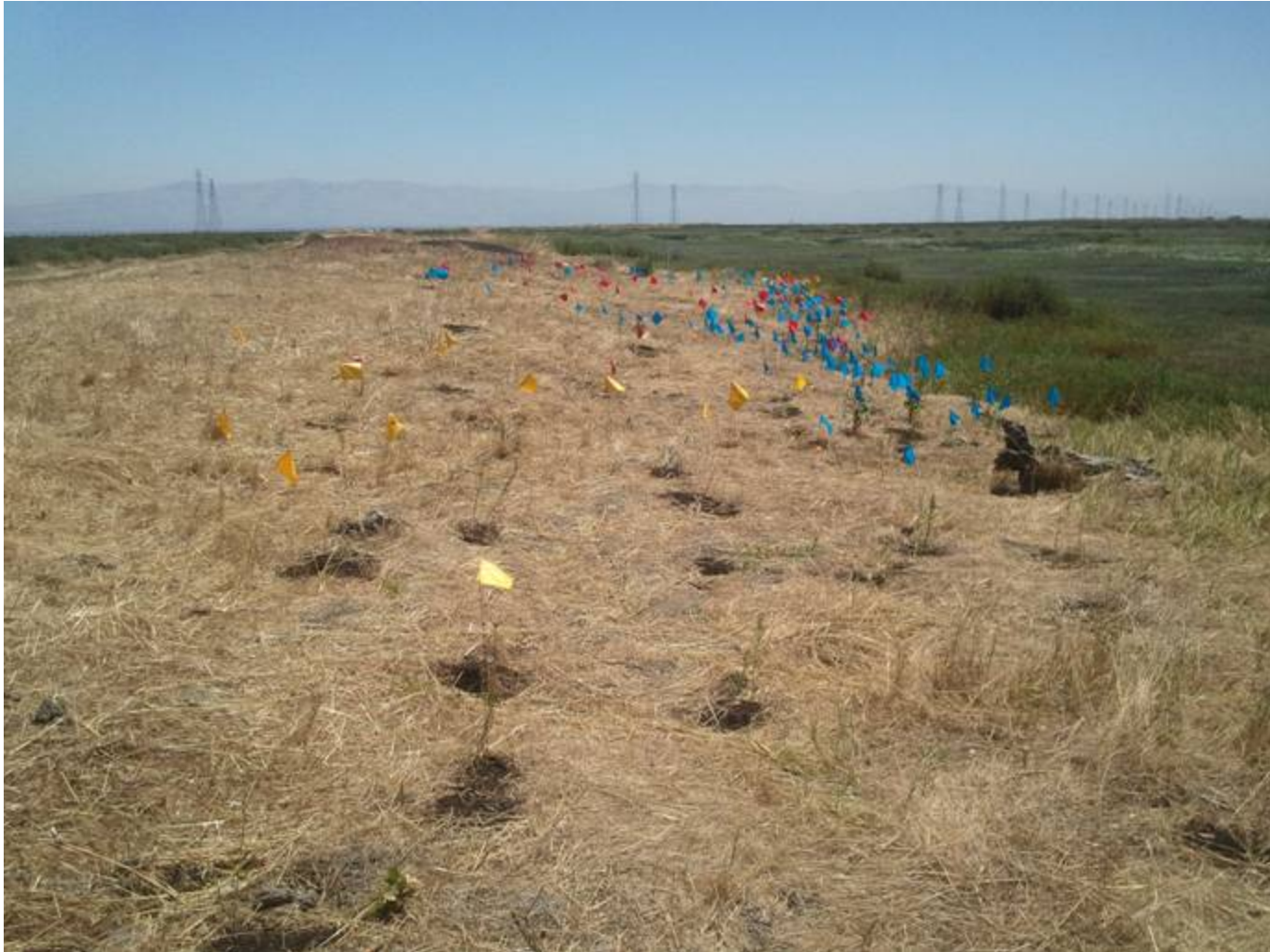
**San Francisco Bay Community-based  
Salt Pond Transition Zone Restoration  
San Mateo and Alameda Counties**

\*#13. San Francisco Bay Community-based  
Salt Pond Transition Zone Restoration,  
San Mateo and Alameda Counties



- Levee before restoration -100% non-native species

\*#13. San Francisco Bay Community-based  
Salt Pond Transition Zone Restoration,  
San Mateo and Alameda Counties



- Levee being restored – initial planting

\*#13. San Francisco Bay Community-based  
Salt Pond Transition Zone Restoration,  
San Mateo and Alameda Counties



- Levee being restored – secondary planting

\*#13. San Francisco Bay Community-based  
Salt Pond Transition Zone Restoration,  
San Mateo and Alameda Counties



- Restored levee

\*#13. San Francisco Bay Community-based  
Salt Pond Transition Zone Restoration,  
San Mateo and Alameda Counties



- Restored levee - close-up



\*#13. San Francisco Bay Community-based  
Salt Pond Transition Zone Restoration,  
San Mateo and Alameda Counties

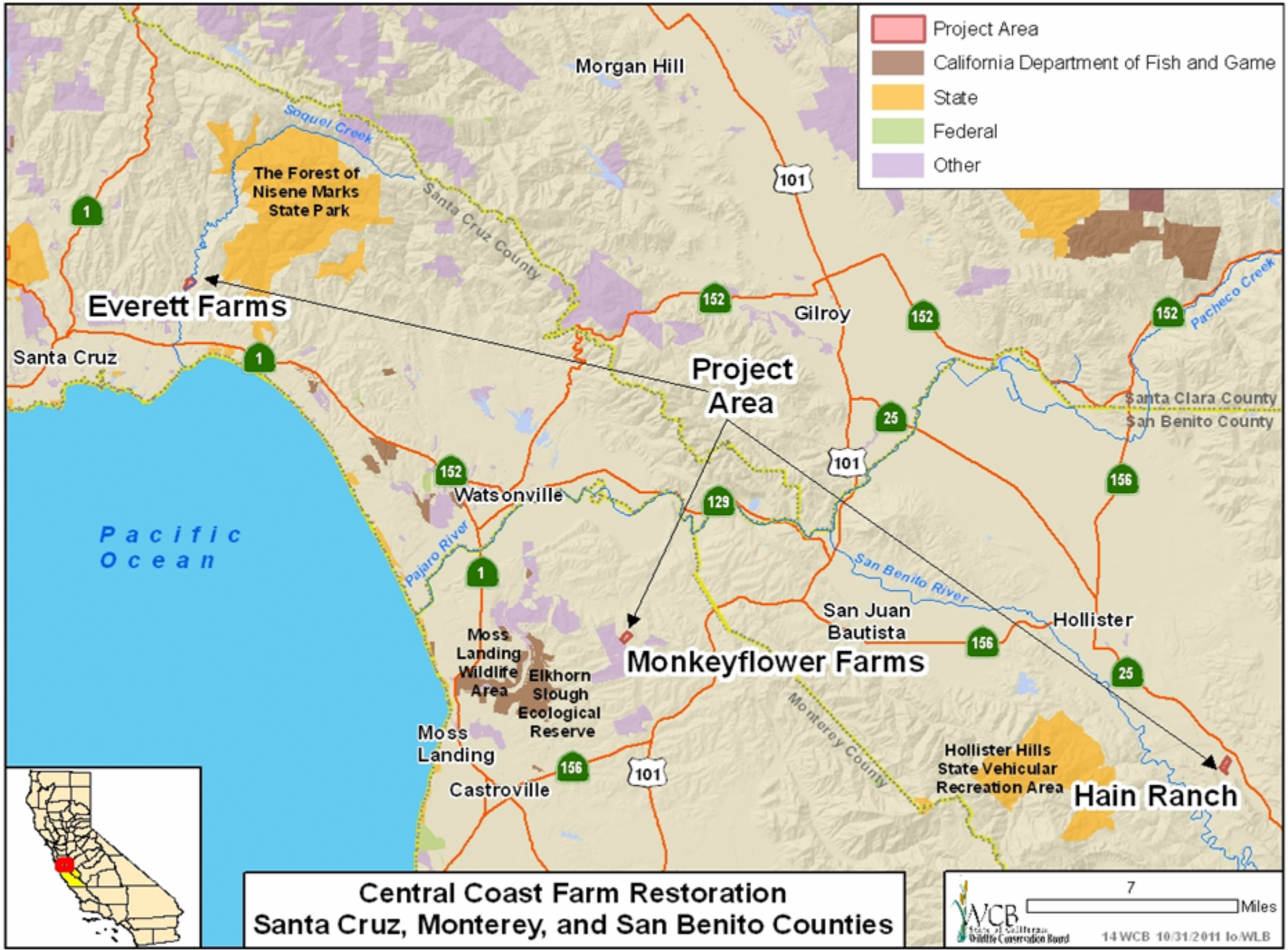


- Save The Bay nursery

\*#13. San Francisco Bay Community-based  
Salt Pond Transition Zone Restoration,  
San Mateo and Alameda Counties



- Eden Landing ER entrance road to be seeded with native plants



**Central Coast Farm Restoration  
Santa Cruz, Monterey, and San Benito Counties**

\*#14. Central Coast Farm Restoration  
Santa Cruz, Monterey and San Benito Counties



- The project will remove small patches of Arundo and plant native trees and shrubs along Tres Pinos Creek at Hain Ranch Organics.

\*#14. Central Coast Farm Restoration  
Santa Cruz, Monterey and San Benito Counties



- Rows of native trees will be planted across the pasture paddocks for shade and windbreaks for livestock at Monkeyflower Ranch. Raptor perches, bat boxes, and bird boxes will also be installed throughout the tree lines and paddocks.

\*#14. Central Coast Farm Restoration  
Santa Cruz, Monterey and San Benito Counties



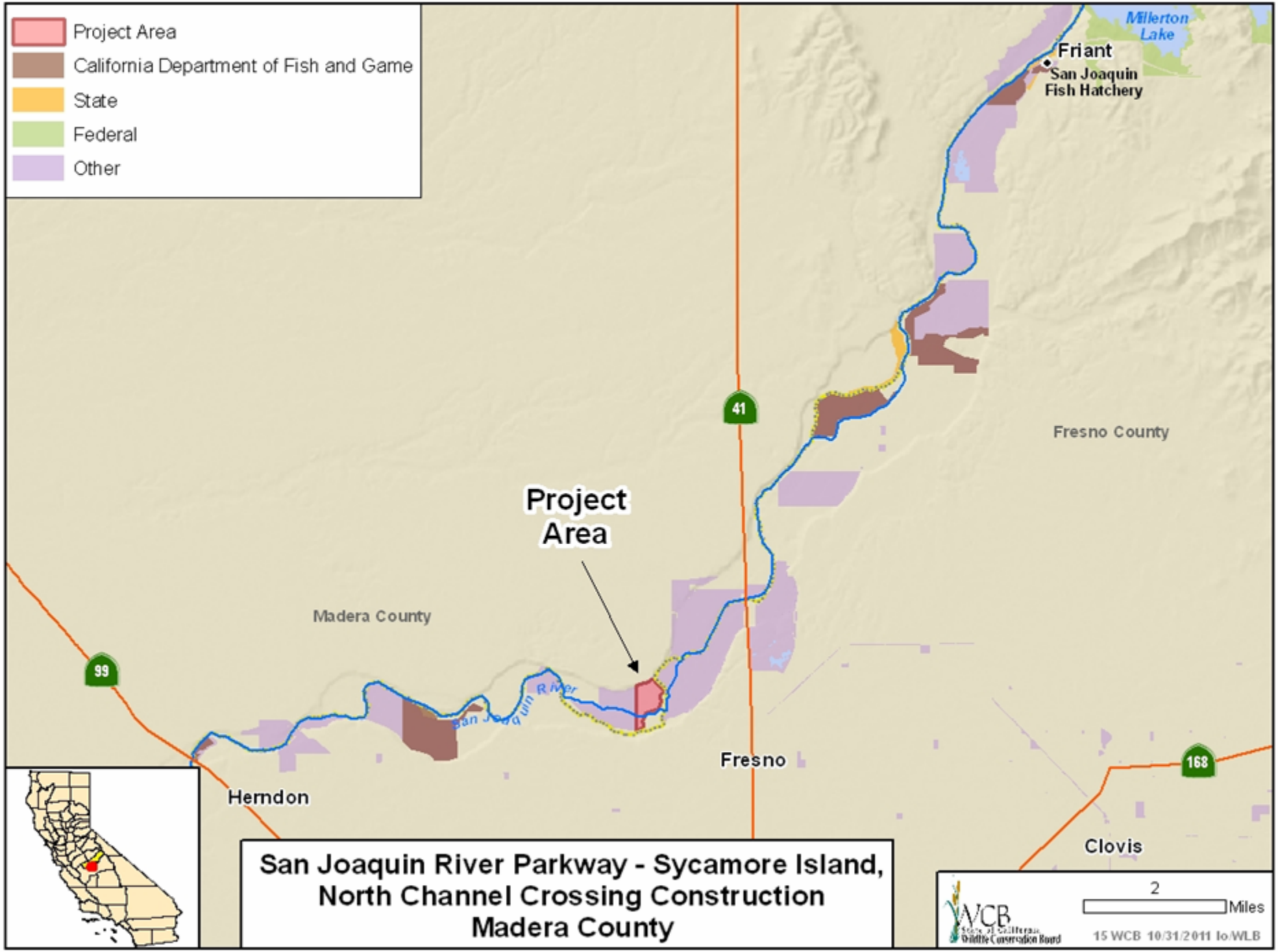
- The project will remove invasive Scotch broom from the project area at Monkeyflower Ranch.

\*#14. Central Coast Farm Restoration  
Santa Cruz, Monterey and San Benito Counties



- The project will install native trees and shrubs along Soquel Creek at Everett Family Farms

- Project Area
- California Department of Fish and Game
- State
- Federal
- Other



**San Joaquin River Parkway - Sycamore Island,  
North Channel Crossing Construction  
Madera County**


2 Miles  
State of California  
Wildlife Conservation Board  
15 WCB 10/31/2011 lo.WLB



\*#15. San Joaquin River Parkway, Sycamore Island  
North Channel Crossing Construction, Madera County



- Project location

\*#15. San Joaquin River Parkway, Sycamore Island  
North Channel Crossing Construction, Madera County



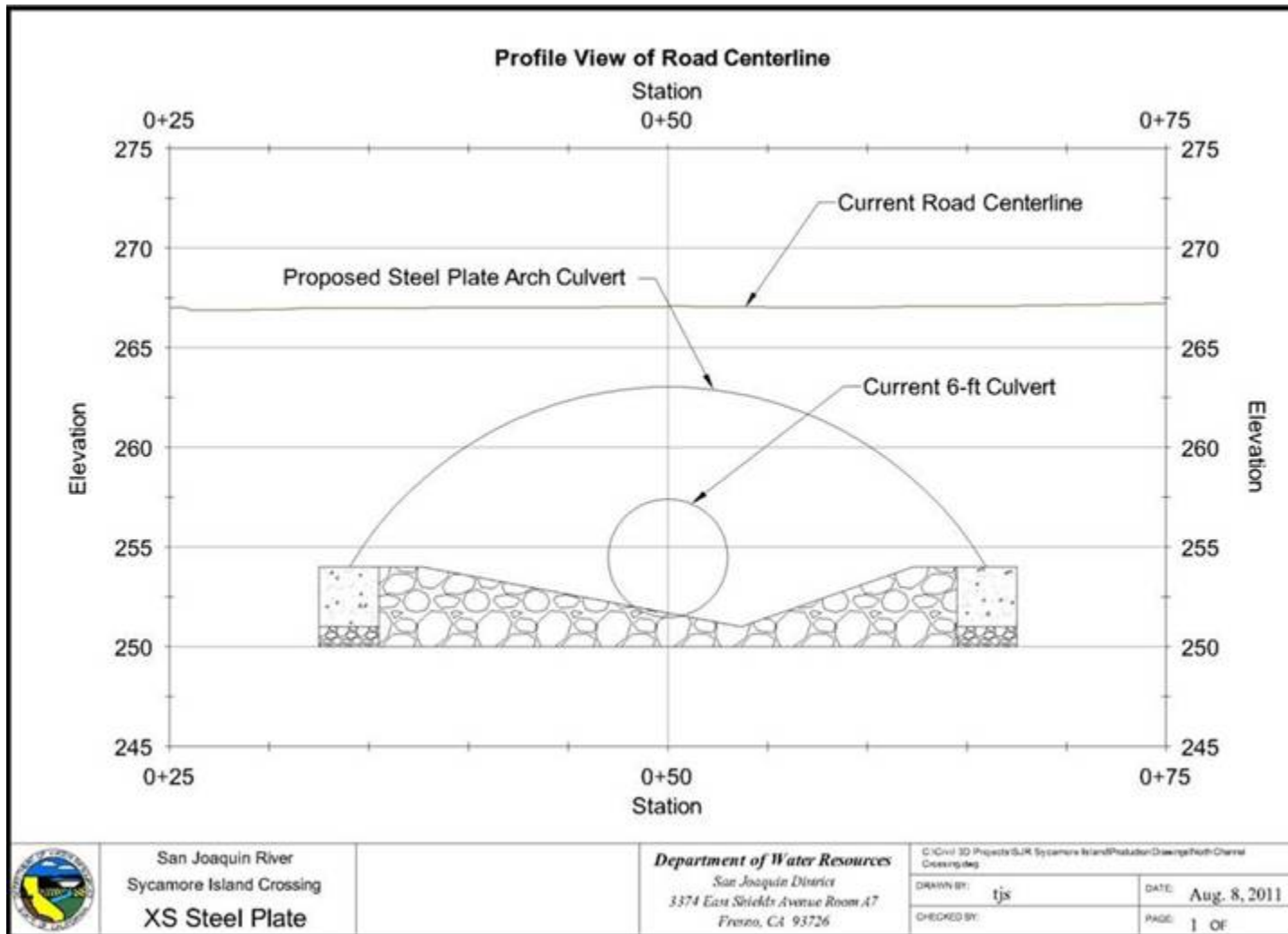
- Upstream end of culvert during 6000 cfs release from Friant Dam, January 6, 2011

\*#15. San Joaquin River Parkway, Sycamore Island  
North Channel Crossing Construction, Madera County



- Upstream end of culvert during after water receded, on February 25, 2011

\*#15. San Joaquin River Parkway, Sycamore Island  
North Channel Crossing Construction, Madera County

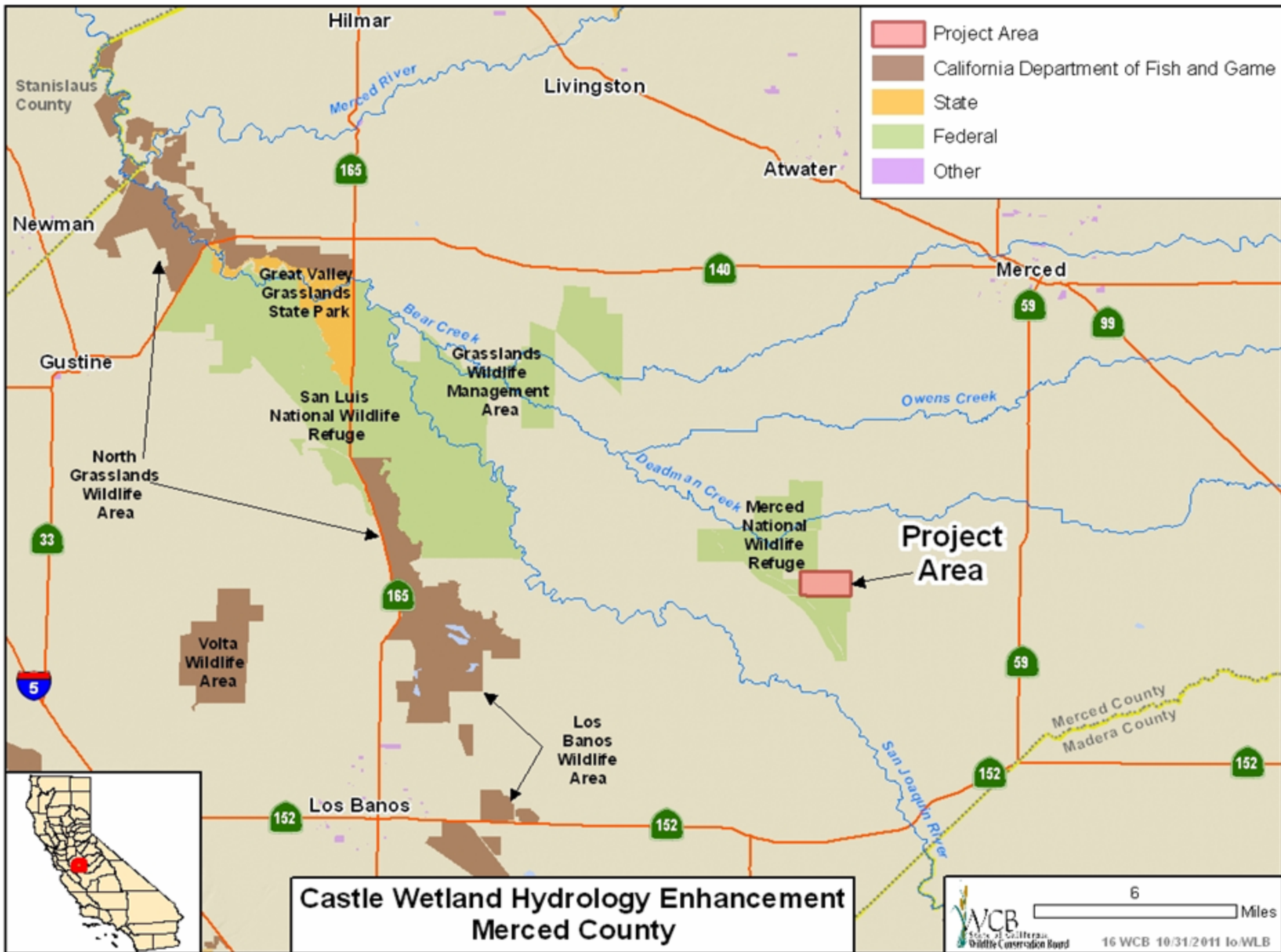


- Profile of the current culvert compared to proposed steel arch culvert

\*#15. San Joaquin River Parkway, Sycamore Island  
North Channel Crossing Construction, Madera County



- Example of a steel arch culvert with cobble riprap



- Project Area
- California Department of Fish and Game
- State
- Federal
- Other

**Castle Wetland Hydrology Enhancement  
Merced County**

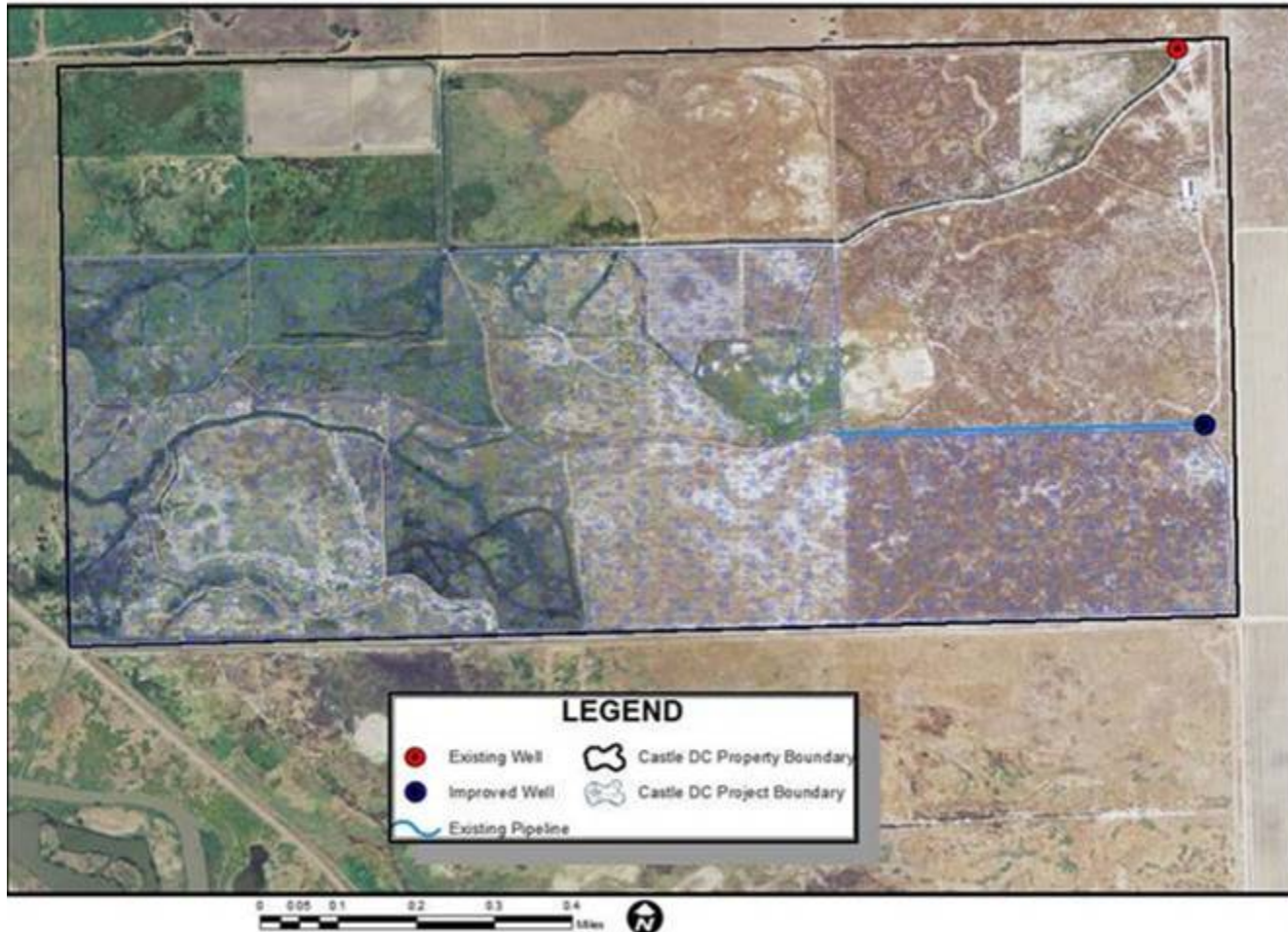
## \*#16. Castle Wetland Hydrology Enhancement Merced County



- Castle Duck Club's existing deep well pump will be drilled deeper and replaced with a larger pump to increase output in order to flood up and manage the club's wetlands more efficiently.

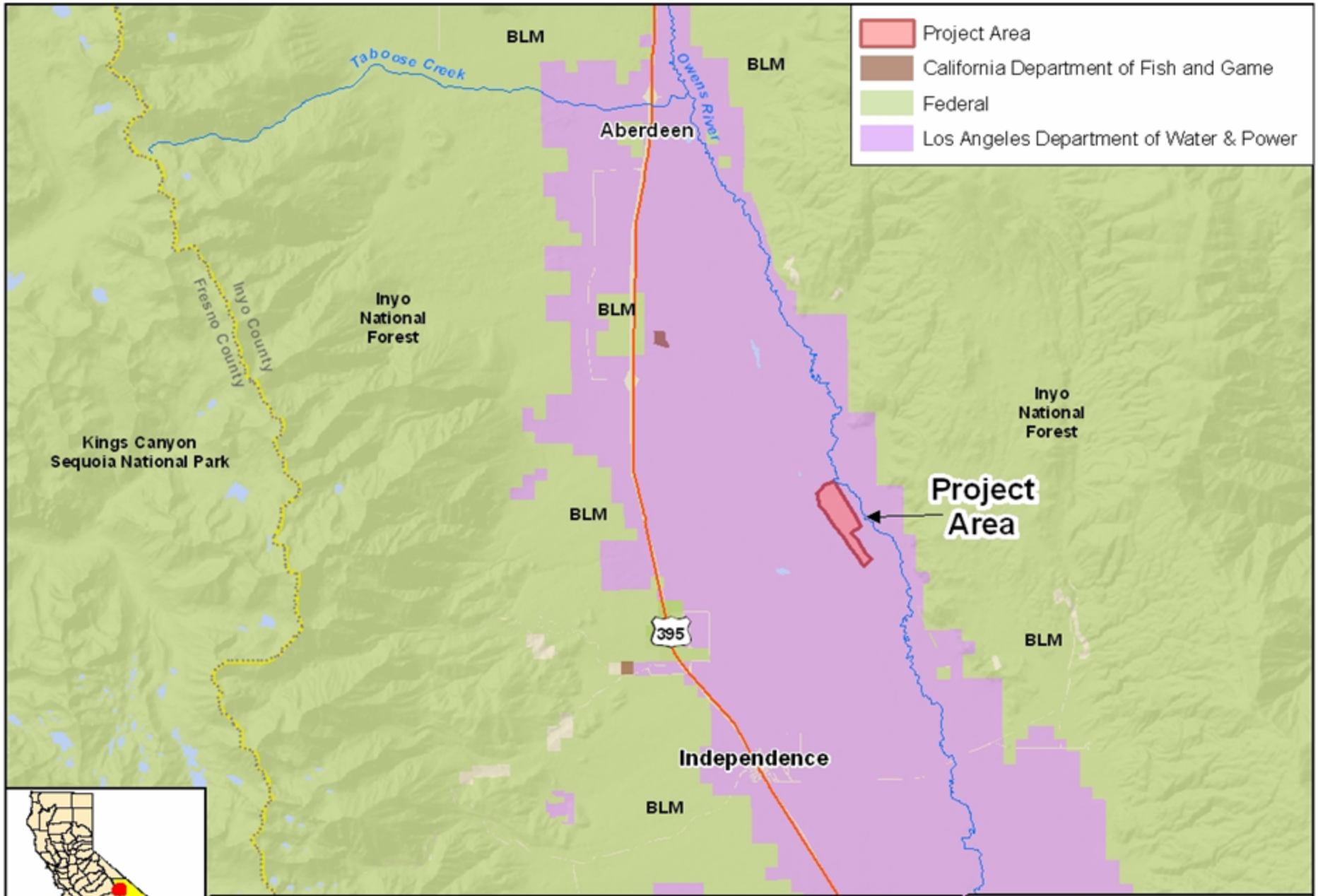
# \*#16. Castle Wetland Hydrology Enhancement Merced County

## Castle Wetland Hydrology Enhancement



- Project will help to supply and maintain water over the shaded area (shown above)





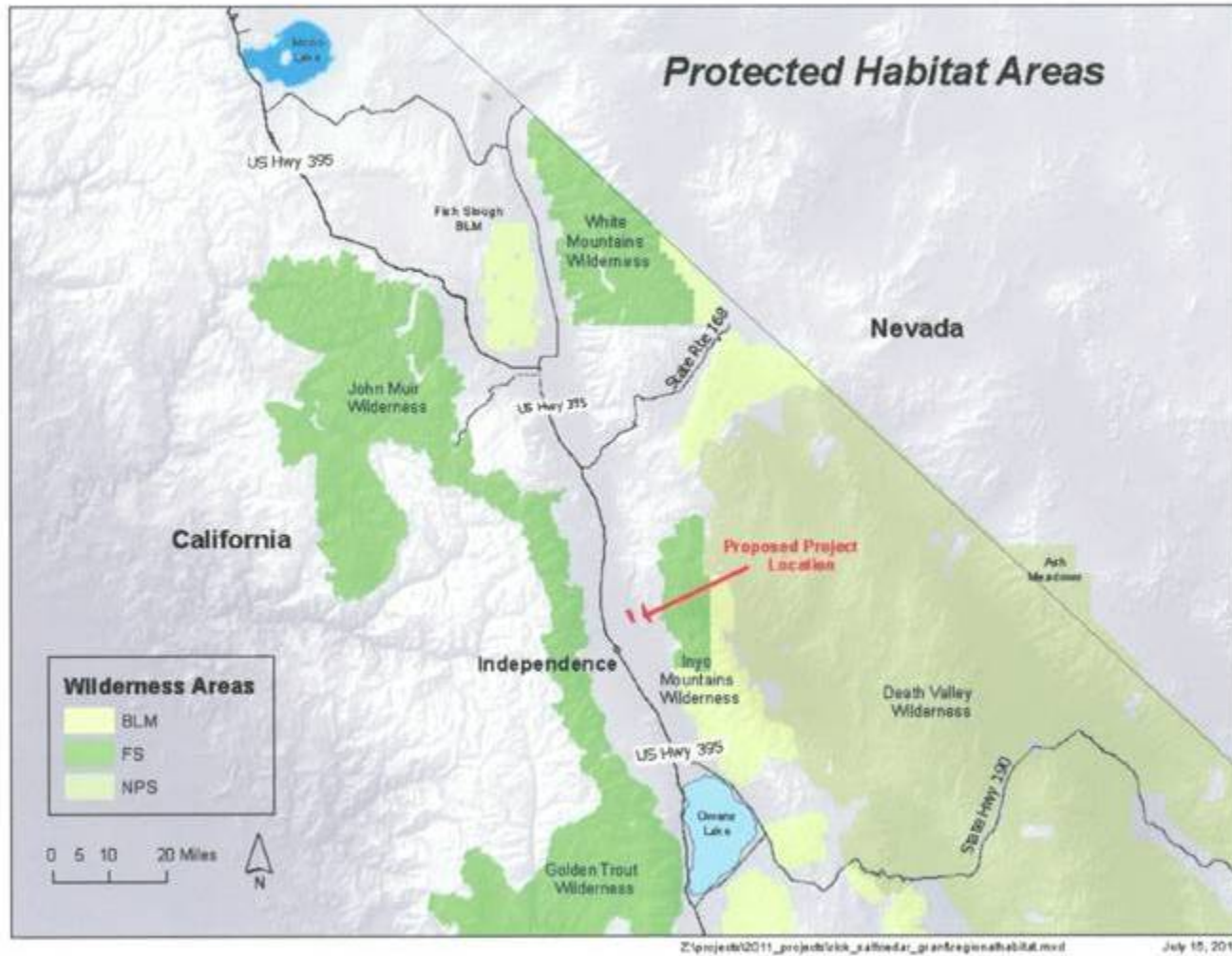
- Project Area
- California Department of Fish and Game
- Federal
- Los Angeles Department of Water & Power

**Lower Owens River Basin Saltcedar Control, Phase II  
Inyo County**

4 Miles

**YVCB**  
 Yuba Valley Conservation Board  
 17 WCB 10/31/2011 to-WLB

\*#17. Lower Owens River Basin Saltcedar Control, Phase II, Inyo County



## \*#17. Lower Owens River Basin Saltcedar Control, Phase II, Inyo County



- Left of road has been treated. Right side of road shows mature tamarisk that will be removed.

\*#17. Lower Owens River Basin Saltcedar Control,  
Phase II, Inyo County



- Cut tamarisk which will be burned and re-sprouts treated with herbicide.

\*#17. Lower Owens River Basin Saltcedar Control,  
Phase II, Inyo County

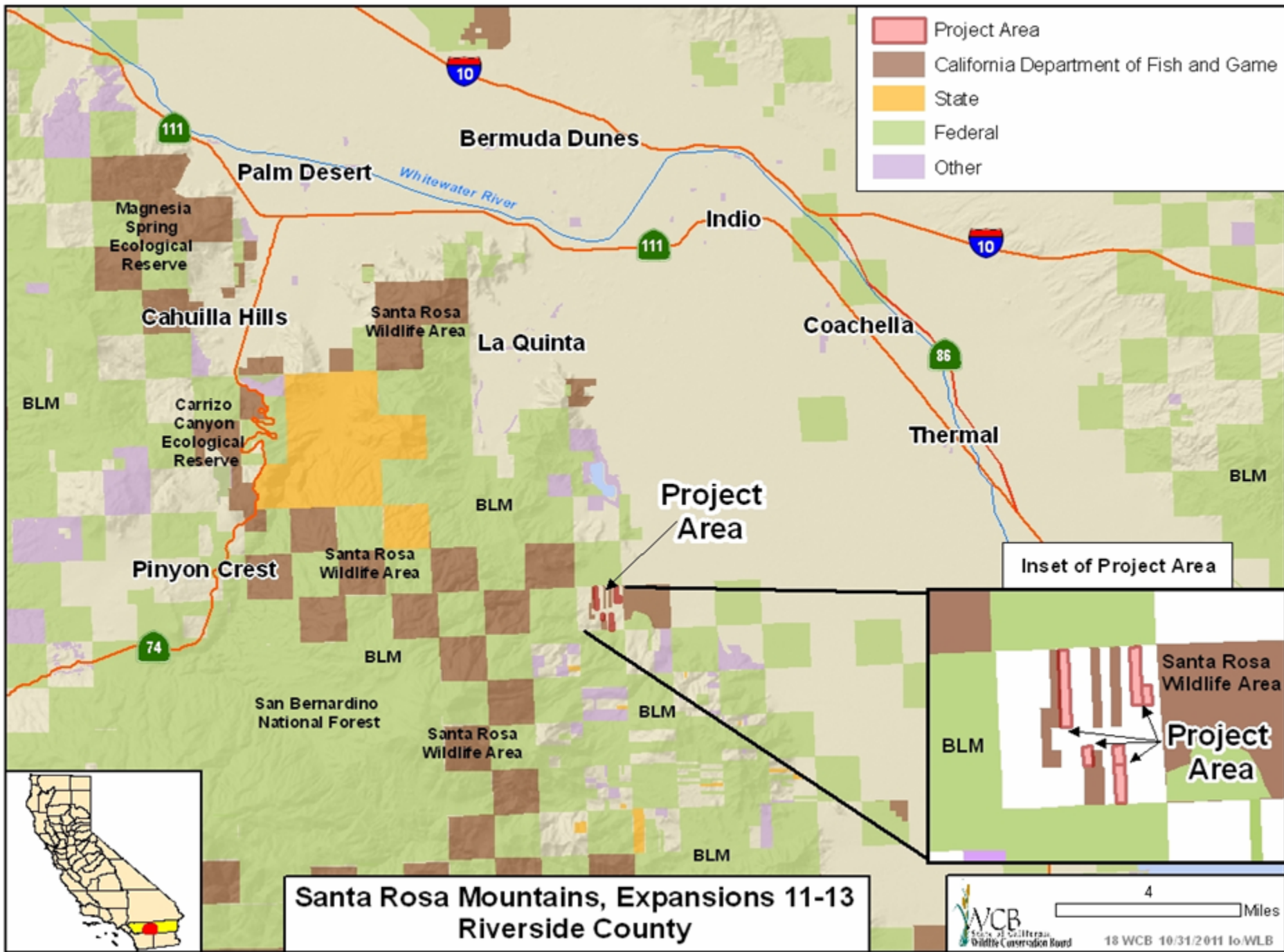


- Tamarisk out-competing native willow growth in riparian area.

\*#17. Lower Owens River Basin Saltcedar Control,  
Phase II, Inyo County



- Treatment area with monotypic stands of Tamarisk. For geographic perspective, Whitney Hatchery is in far background at base of mountain.



**Santa Rosa Mountains, Expansions 11-13  
Riverside County**

\*#18. Santa Rosa Mountains, Expansions 11-13  
Riverside County



- Looking west over the acquisition area



\*#18. Santa Rosa Mountains, Expansions 11-13  
Riverside County



- Looking north at one of the rock outcroppings

\*#18. Santa Rosa Mountains, Expansions 11-13  
Riverside County



- Looking at one of the washes covering the properties.

\*#18. Santa Rosa Mountains, Expansions 11-13  
Riverside County

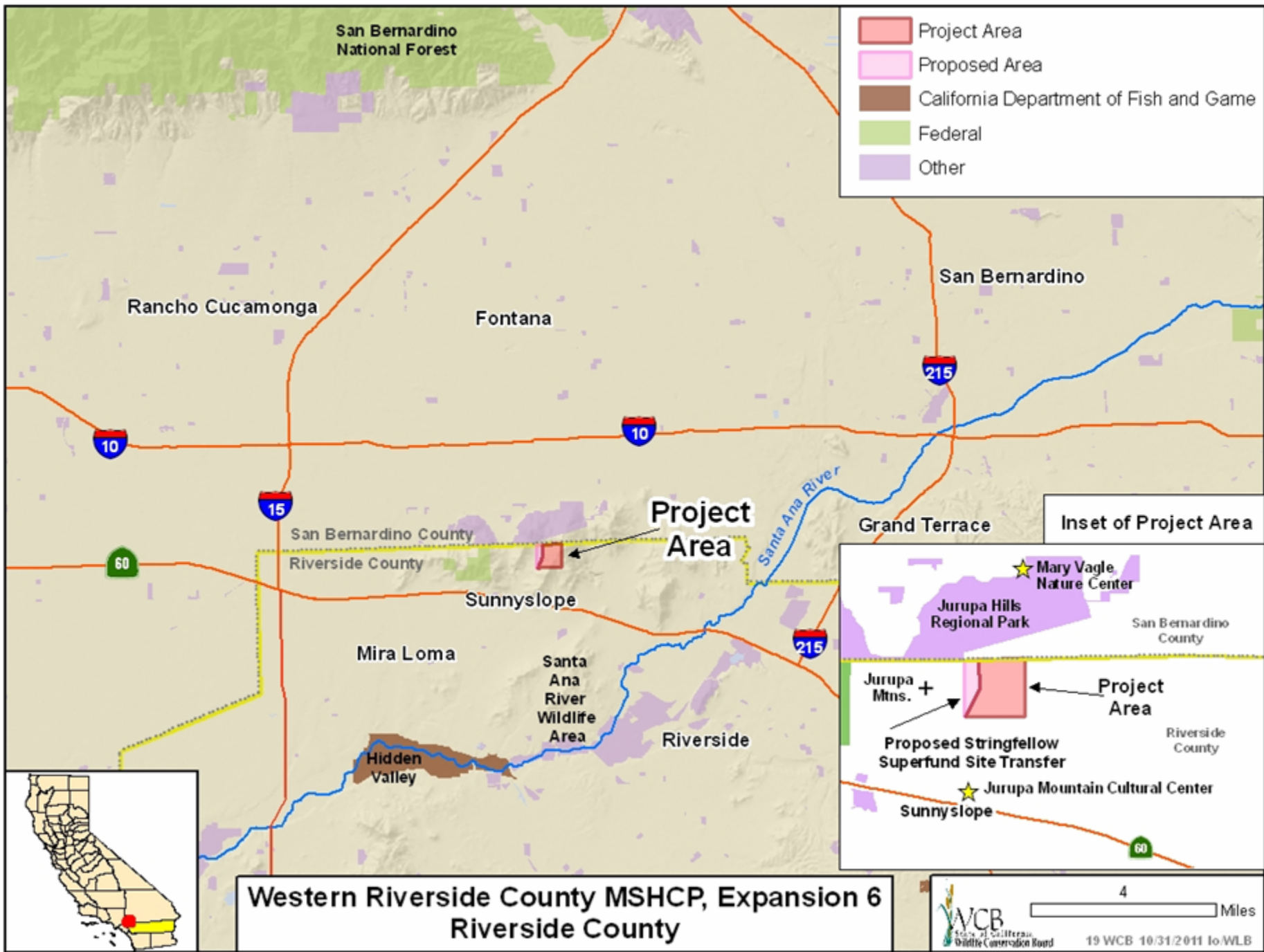


- Looking west over the properties

\*#18. Santa Rosa Mountains, Expansions 11-13  
Riverside County



- Additional rock outcroppings covering the properties



**Western Riverside County MSHCP, Expansion 6  
Riverside County**



\*#19. Western Riverside County MSHCP, Expansion 6  
Riverside County



- View looking east to open space 138± acres

## \*#19. Western Riverside County MSHCP, Expansion 6 Riverside County



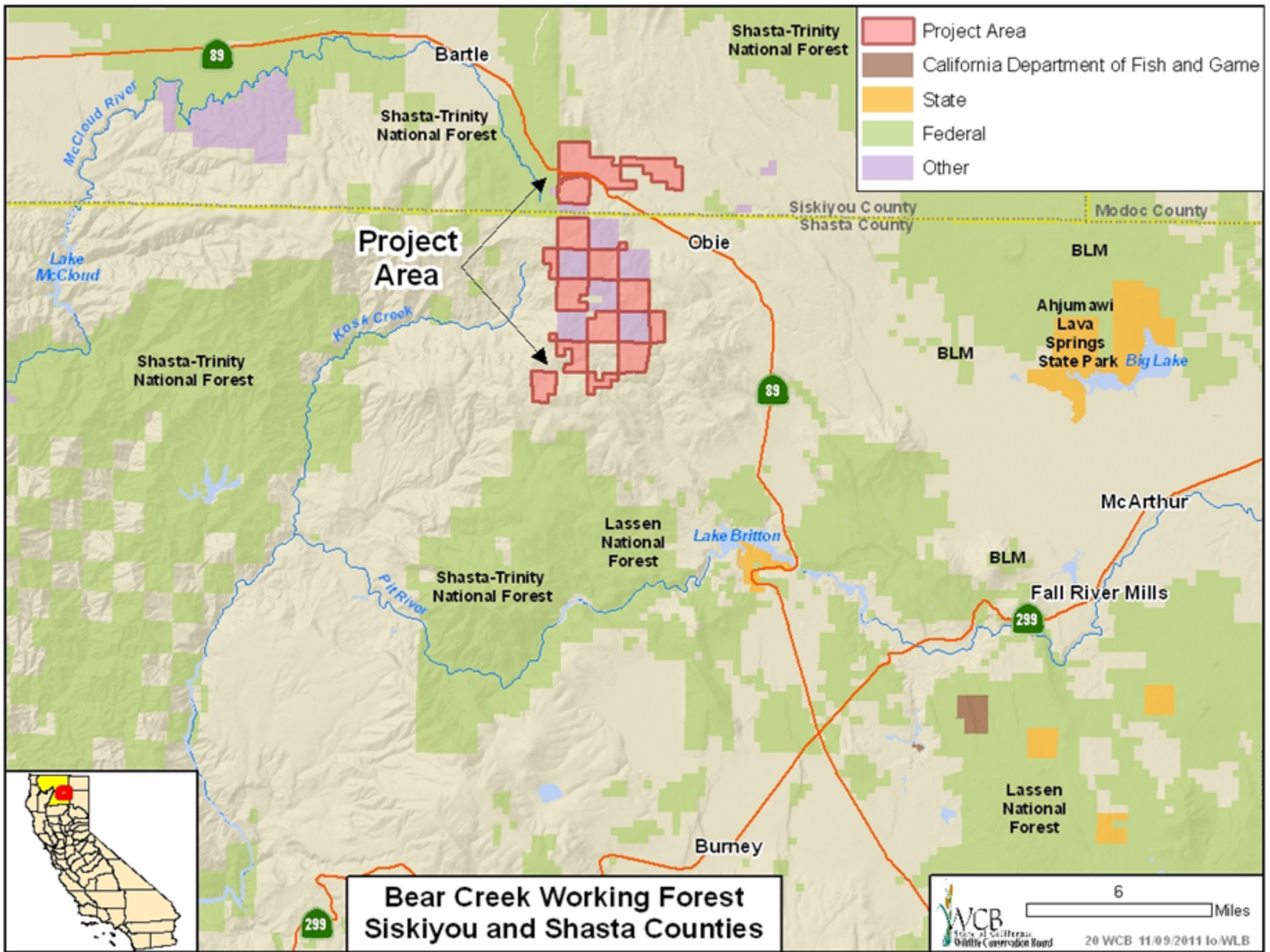
- View looking east toward open space 138± acres and peak of Jurupa Mountain

\*#19. Western Riverside County MSHCP, Expansion 6  
Riverside County



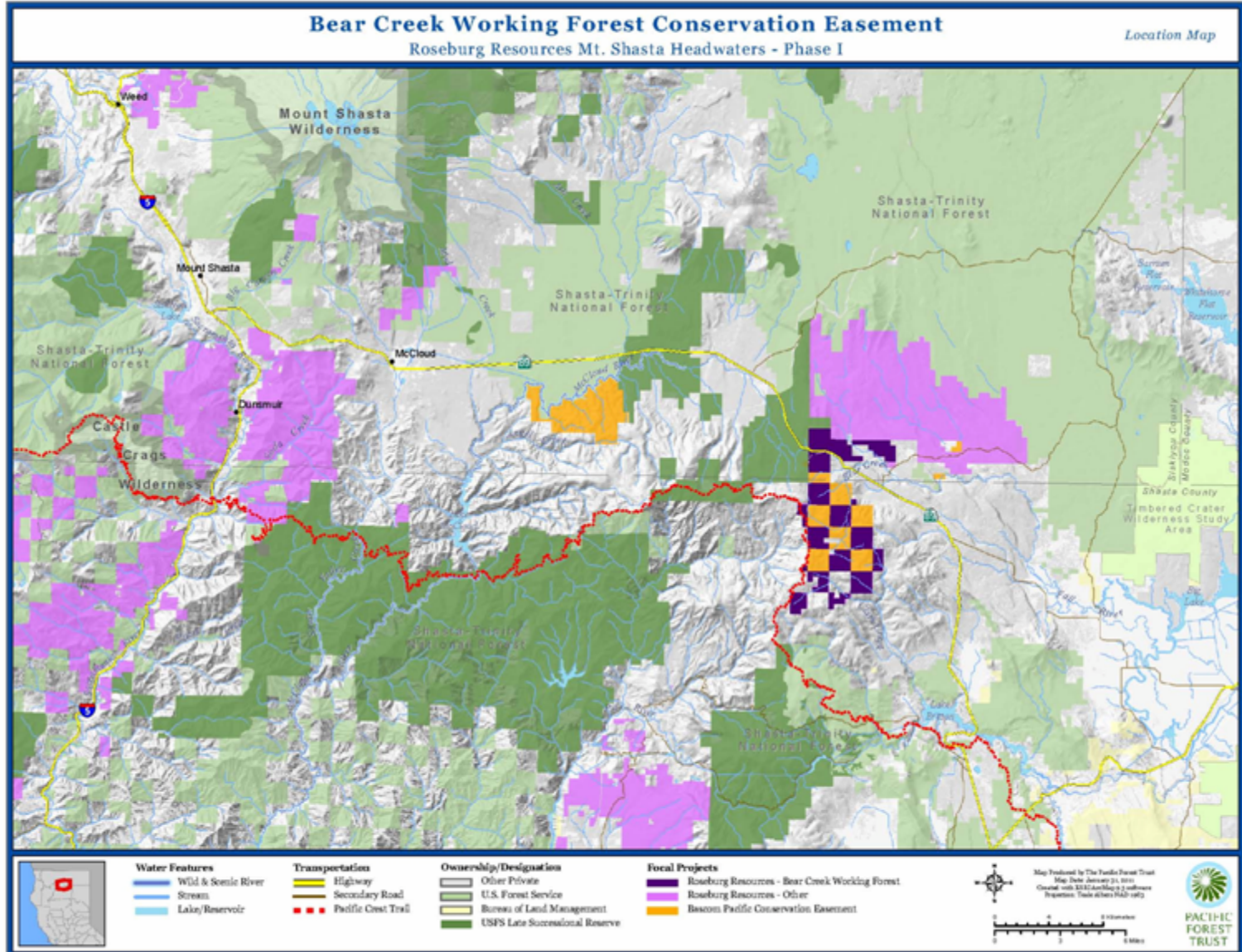
- View looking west/northwest to portion of property impacted by Stringfellow Superfund Site





**Bear Creek Working Forest  
Siskiyou and Shasta Counties**

# #20. Bear Creek Working Forest Siskiyou and Shasta Counties



#20. Bear Creek Working Forest  
Siskiyou and Shasta Counties



- Looking Northwest at Mt. Shasta (PFT Photo)

#20. Bear Creek Working Forest  
Siskiyou and Shasta Counties



- Pacific fisher (PFT Photo)

#20. Bear Creek Working Forest  
Siskiyou and Shasta Counties



- Mature Forest (PFT Photo)

#20. Bear Creek Working Forest  
Siskiyou and Shasta Counties



- Spotted Owl (Roseburg Resources Company photo)

#20. Bear Creek Working Forest  
Siskiyou and Shasta Counties



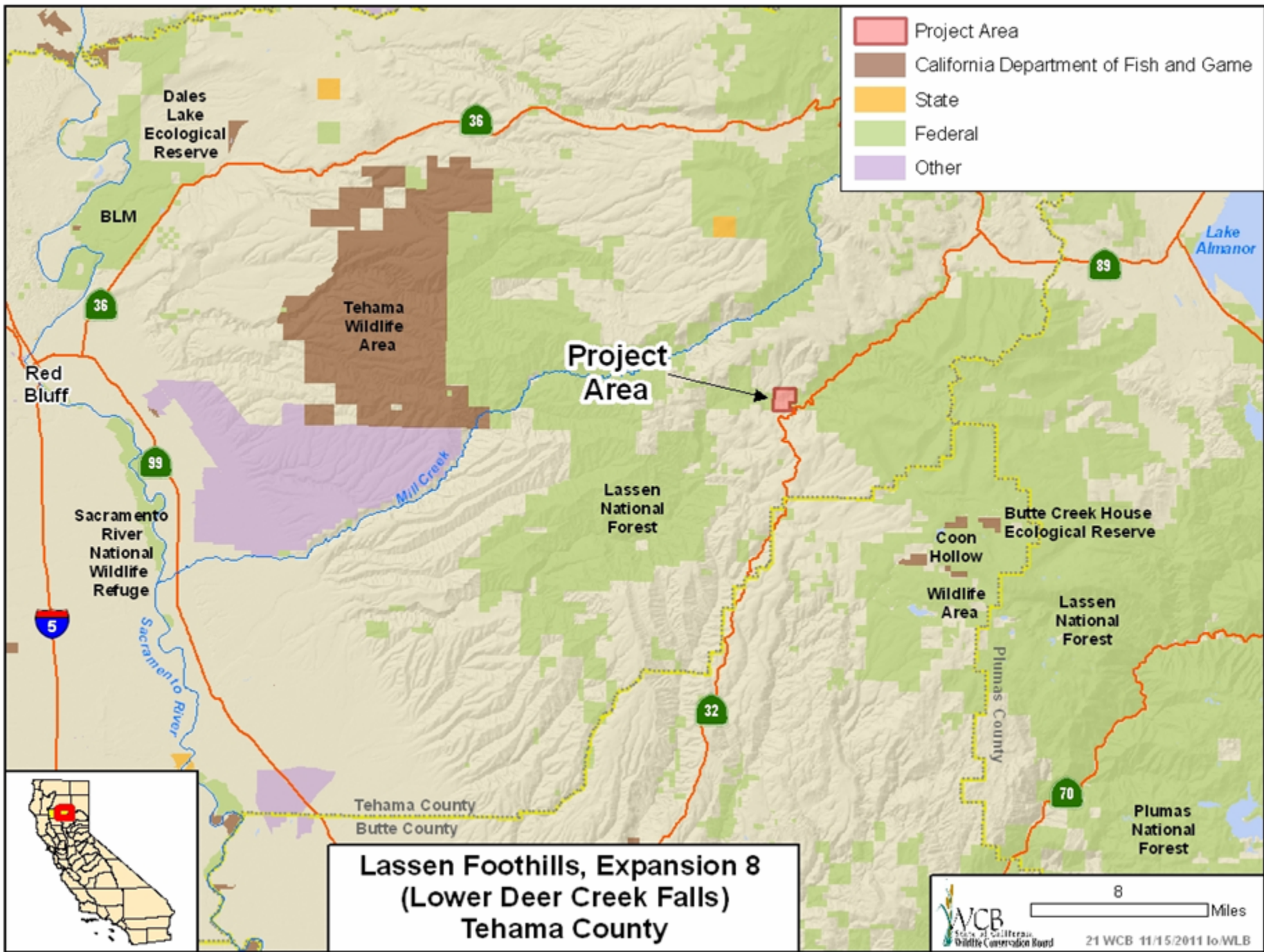
- Meadow (PFT Photo)

#20. Bear Creek Working Forest  
Siskiyou and Shasta Counties



- Bear Creek (PFT Photo)





- Project Area
- California Department of Fish and Game
- State
- Federal
- Other

**Lassen Foothills, Expansion 8  
(Lower Deer Creek Falls)  
Tehama County**

#21. Lassen Foothills, Expansion 8  
(Lower Deer Creek Falls), Tehama County



- View of property looking east

#21. Lassen Foothills, Expansion 8  
(Lower Deer Creek Falls), Tehama County



- View of Lower Deer Creek Falls

#21. Lassen Foothills, Expansion 8  
(Lower Deer Creek Falls), Tehama County



- View of Lower Deer Creek Canyon and falls

#21. Lassen Foothills, Expansion 8  
(Lower Deer Creek Falls), Tehama County

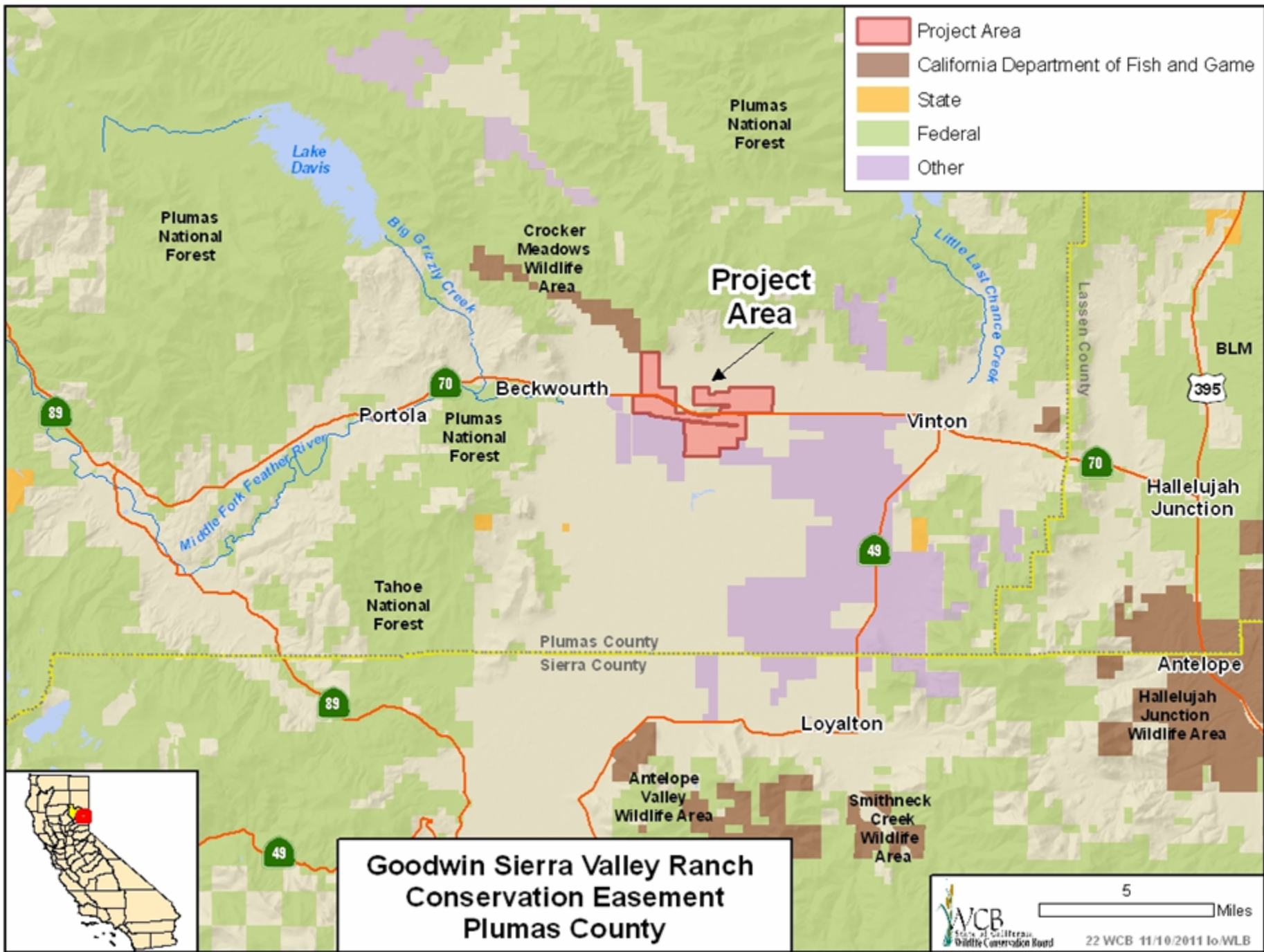


- View of Lower Deer Creek

#21. Lassen Foothills, Expansion 8  
(Lower Deer Creek Falls), Tehama County



- View of fish ladder to be maintained by the Department of Fish and Game



**Goodwin Sierra Valley Ranch  
Conservation Easement  
Plumas County**

#22. Goodwin Sierra Valley Ranch Conservation Easement, Plumas County



- Wet meadow



#22. Goodwin Sierra Valley Ranch Conservation Easement, Plumas County



- Looking southwest

#22. Goodwin Sierra Valley Ranch Conservation Easement, Plumas County



- Looking north at an alfalfa field

#22. Goodwin Sierra Valley Ranch Conservation Easement, Plumas County

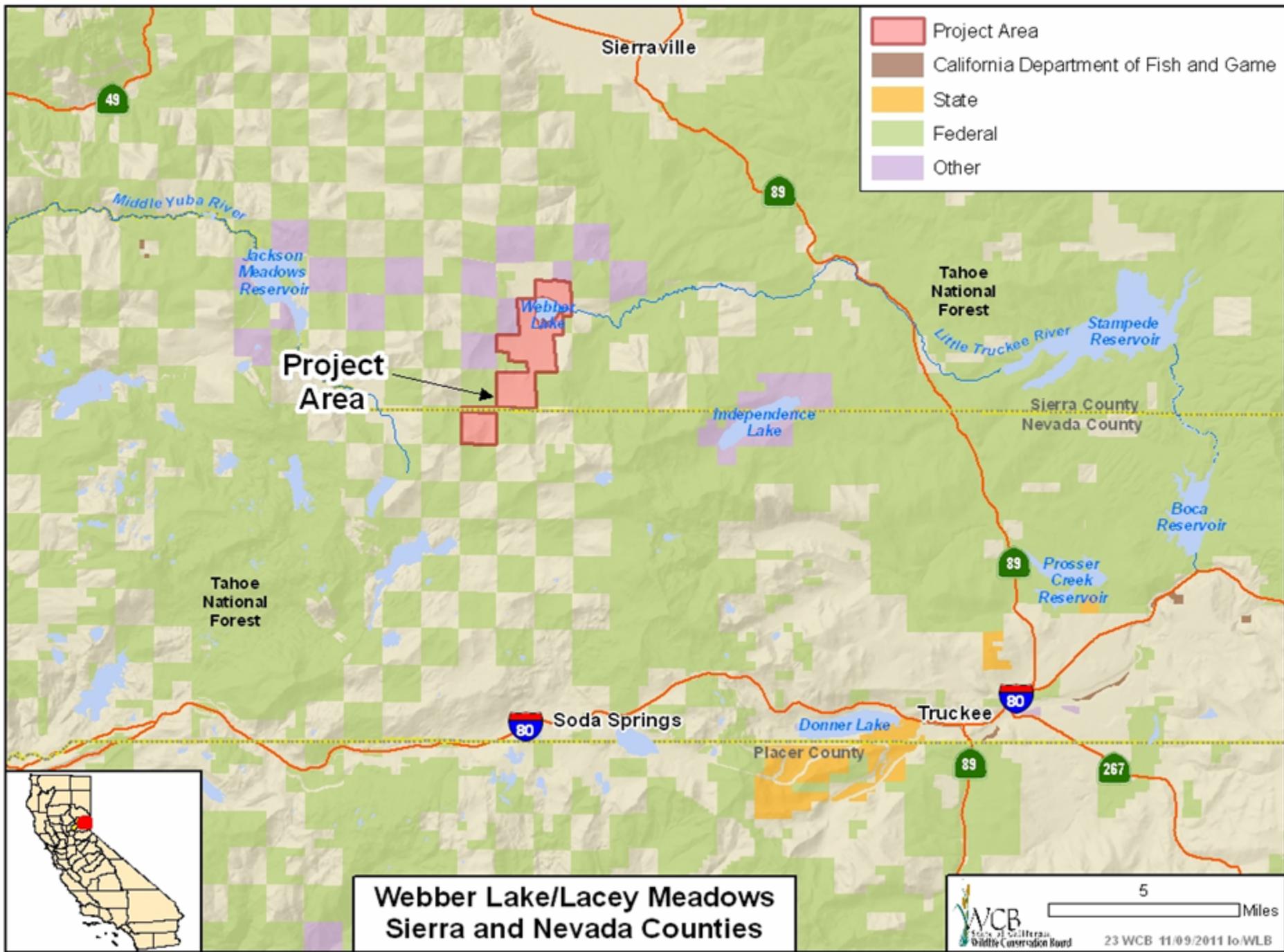


- Looking west at a pond/wetland area

## #22. Goodwin Sierra Valley Ranch Conservation Easement, Plumas County



- Ranch headquarters in the background/cattle grazing



**Webber Lake/Lacey Meadows  
Sierra and Nevada Counties**

#23. Webber Lake/Lacey Meadows  
Sierra and Nevada Counties



- Bald Eagles resting at Lacey Meadows (TDLT photo)

#23. Webber Lake/Lacey Meadows  
Sierra and Nevada Counties



- Webber Lake (TDLT photo)

#22. Webber Lake/Lacey Meadows  
Sierra and Nevada Counties



- Lacey Meadows (TDLT photo)



#23. Webber Lake/Lacey Meadows  
Sierra and Nevada Counties



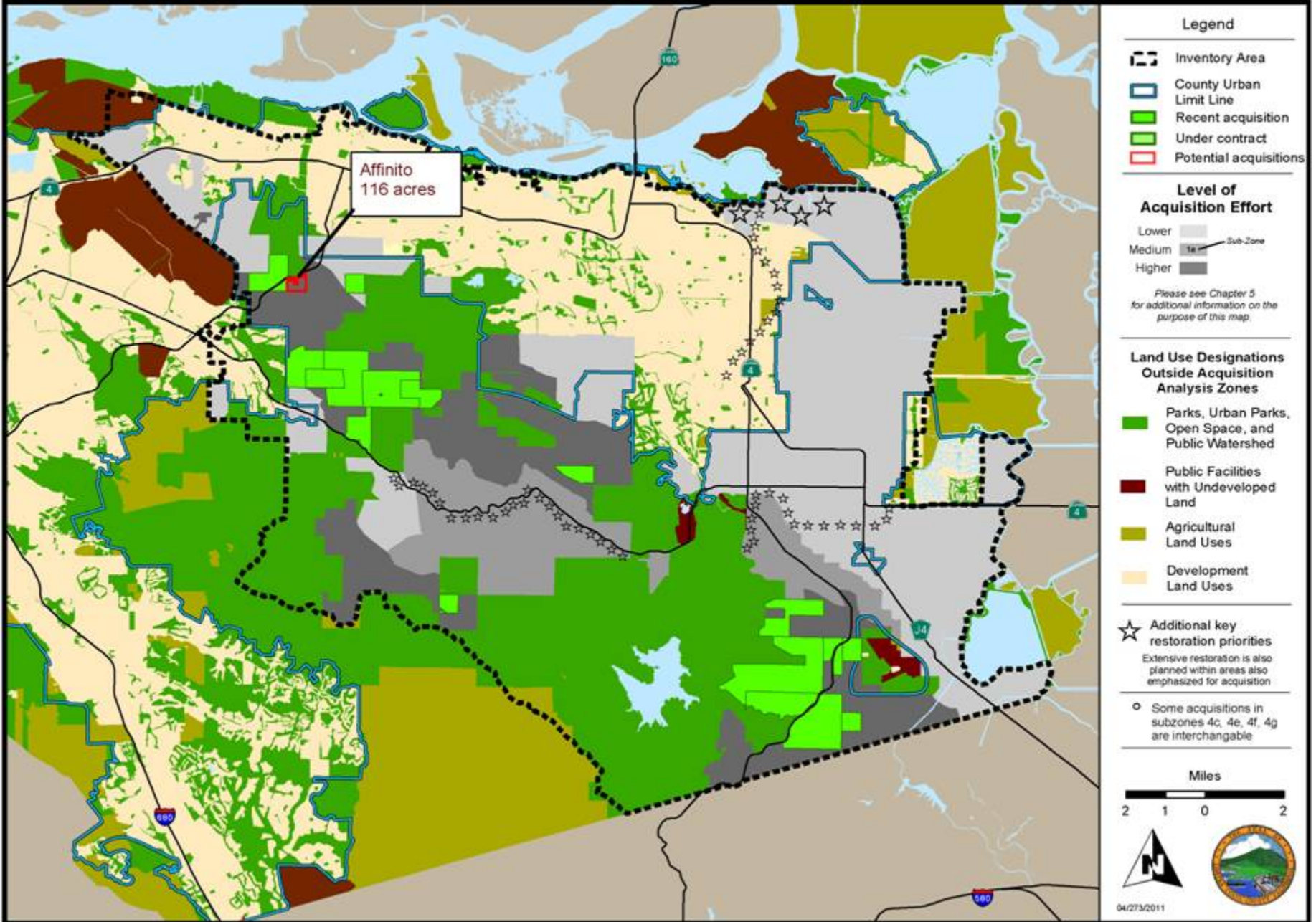
- Lighting strike (photo by Dave Kalemba)

#23. Webber Lake/Lacey Meadows  
Sierra and Nevada Counties



- Lacey Meadows in the winter (TDLT photo)

Proposed Affinito Acquisition and Consistency with HCP/NCCP Acquisition Priorities Under Maximum Urban Development Area Scenario



Affinito  
116 acres

## #24. San Joaquin Multi-Species Conservation Plan 2008 (Affinito), Contra Costa County



- Looking west over the property

#24. San Joaquin Multi-Species Conservation  
Plan 2008 (Affinito), Contra Costa County



- Looking at one of the homes on the property

## #24. San Joaquin Multi-Species Conservation Plan 2008 (Affinito), Contra Costa County

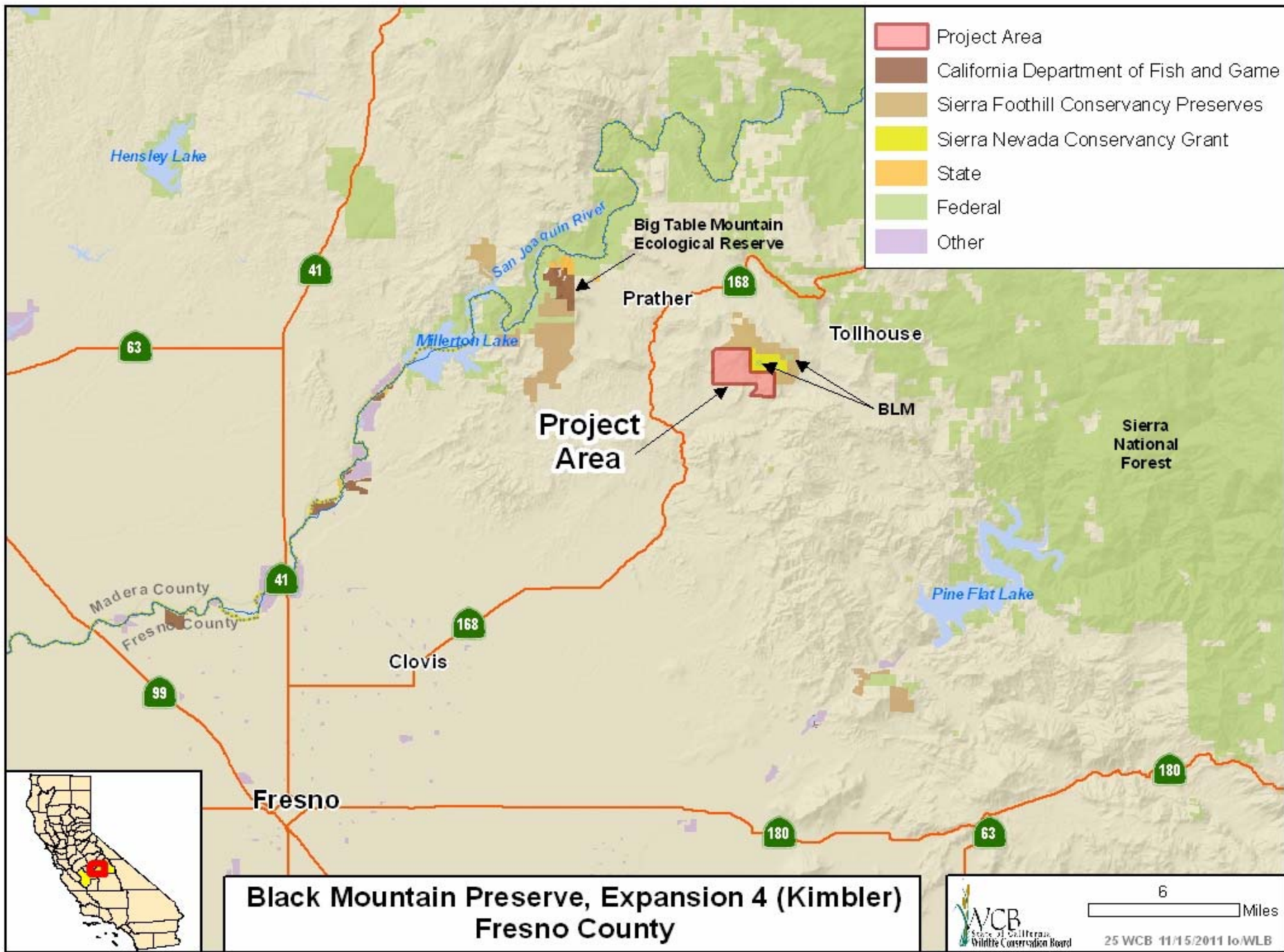


- Looking east over the property

## #24. San Joaquin Multi-Species Conservation Plan 2008 (Affinito), Contra Costa County



- Looking at a manufactured home on the property



- Project Area
- California Department of Fish and Game
- Sierra Foothill Conservancy Preserves
- Sierra Nevada Conservancy Grant
- State
- Federal
- Other

**Black Mountain Preserve, Expansion 4 (Kimbler)  
Fresno County**



25 WCB 11/15/2011 lo/WLB

6 Miles





#25. Black Mountain Preserve, Expansion 4  
(Kimbler), Fresno County



- Looking south at ridge line

#25. Black Mountain Preserve, Expansion 4  
(Kimbler), Fresno County



- View from Granite outcropping of project area and Black Mountain

## #25. Black Mountain Preserve, Expansion 4 (Kimbler), Fresno County



- Carpenteria bush and flower found in the vicinity of Black Mountain

#25. Black Mountain Preserve, Expansion 4  
(Kimbler), Fresno County



- Ridge top looking north at Black Mountain