



Marine Life Protection Act



NCCSR Initial Feasibility Analysis

North Central Coast Regional Stakeholder Group Meeting

November 28, 2007 • San Rafael, CA

Susan Ashcraft

California Department of Fish and Game



Feasibility Evaluation

- MOU requires the Department to prepare a statement of the feasibility criteria used in its evaluation of proposals.
- Department memo prepared June 11, 2007:
“Statement of feasibility criteria for use in analyzing siting alternatives during the second phase of the Marine Life Protection Act Initiative”.



Design Elements

Design elements that INCREASE feasibility:

- Straight Lines Oriented Due N/S, E/W
- Use of Major Landmarks
- Use of Whole Number Latitude/Longitude
- Multiple zoning of adjacent areas



Design Elements

Design elements that DECREASE feasibility:

- Distance-from-shore Boundaries
- Depth Contour Boundaries
- Irregular Boundaries
- Doughnut Designs
- Multiple zoning of adjacent areas



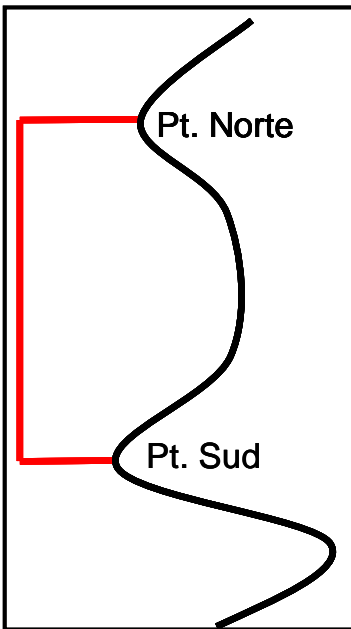
Other Considerations

- Simple Regulations
- Clear goals and objectives
- Accessibility

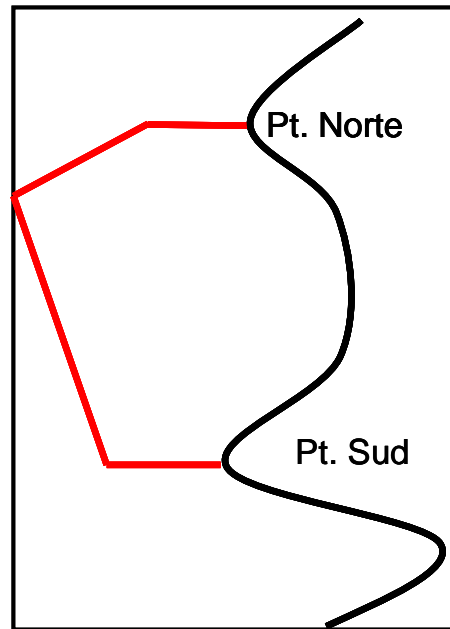


Examples of Boundary Design - 1

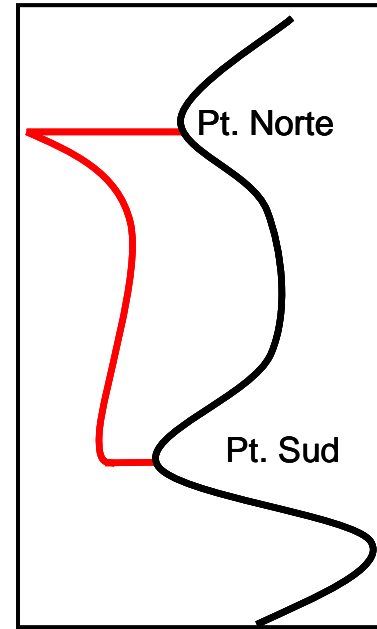
Good!



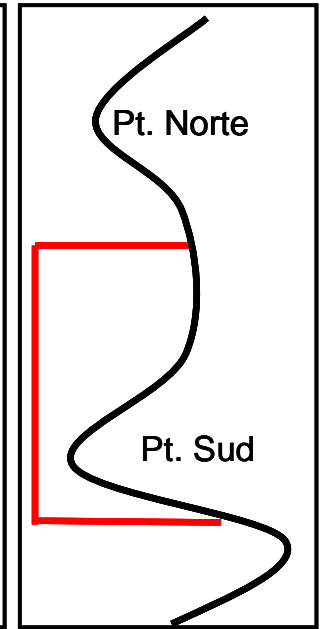
Irregular Lines



Doesn't use straight lines



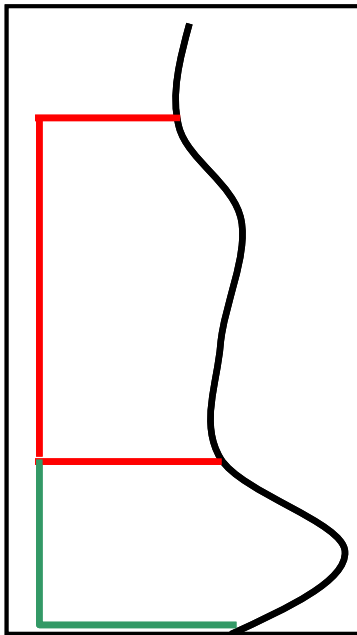
Doesn't use major landmarks



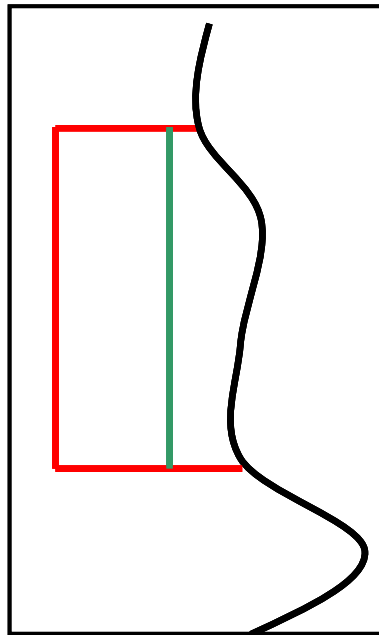


Examples of Boundary Design - 2

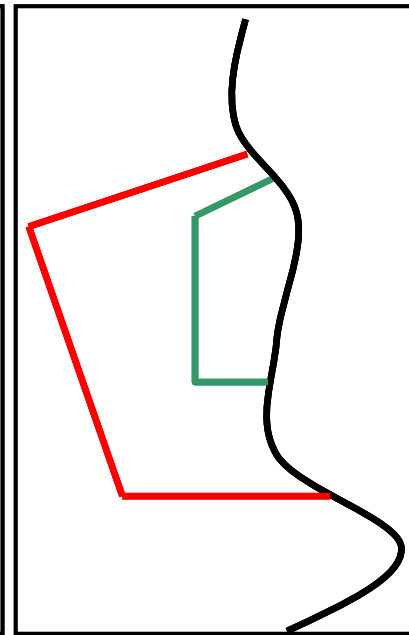
Best!



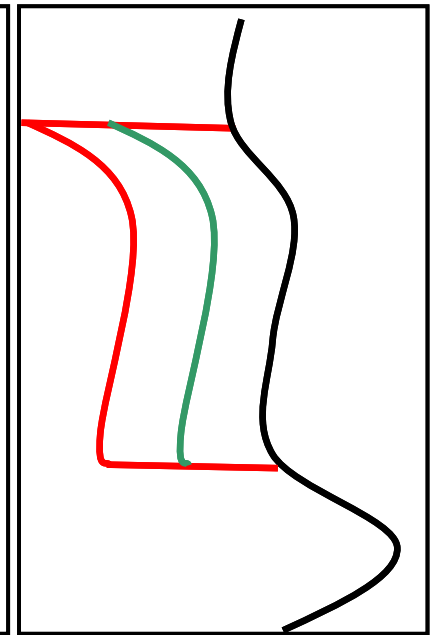
O.K.



Doughnut design



Doesn't use straight lines





Feasibility Evaluation of Initial Arrays

- Evaluation of first drafts completed for NCCRSG
- Each external proposal or internal draft array has its own evaluation
- Provides detailed feedback on feasibility of each MPA contemplated



Frequently Noted Design Elements- Initial Arrays

Frequently noted design elements that decrease MPA feasibility:

- Boundaries not at whole minute lines of latitude/ longitude or at easily recognizable landmarks (such as points, headlands and bouys);
- Boundaries not orientated in a due north/south, east/west direction;
- Boundaries based on distance offshore or depth contours;



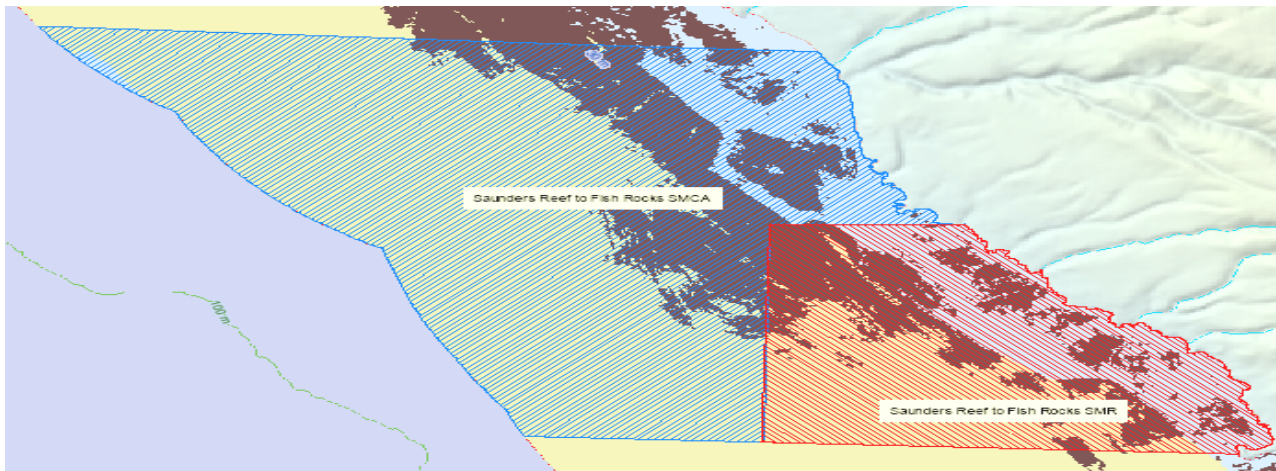
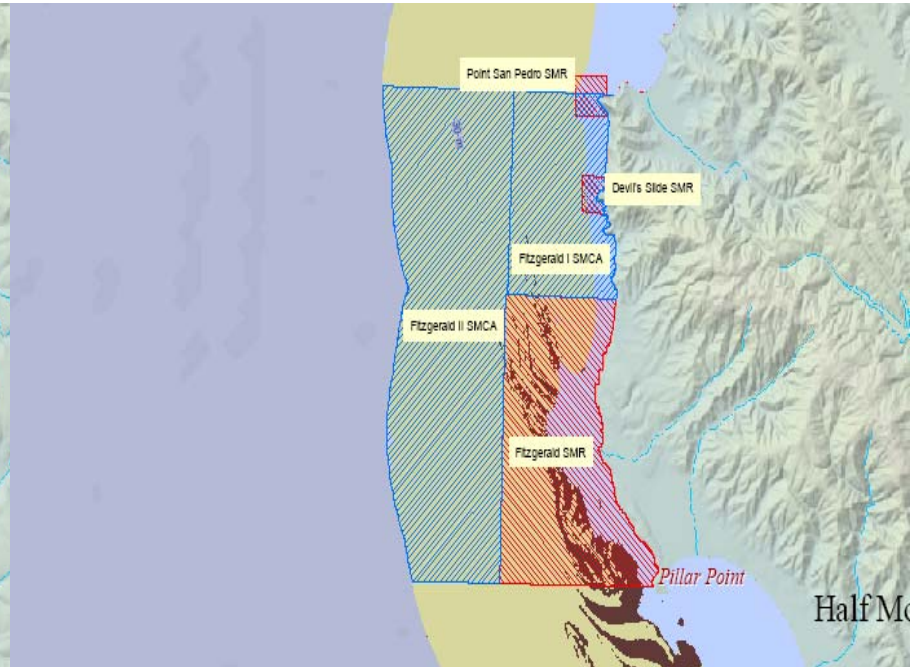
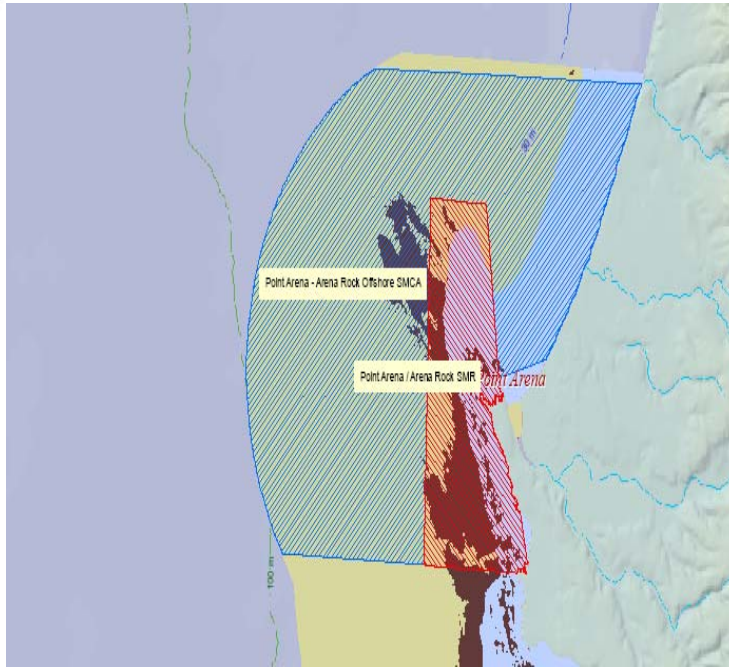
Frequently Noted Design Elements- Initial Arrays

(Continued)

- Shoreline boundaries not specifically defined;
- Doughnut designs (which occurs when MPAs surround one another);
- MPAs with complex regulations;
- “Special Closures” not clearly defined or specifically identify the species to be protected; and
- “Floating corners” in offshore waters not at clear lines of latitude/ longitude

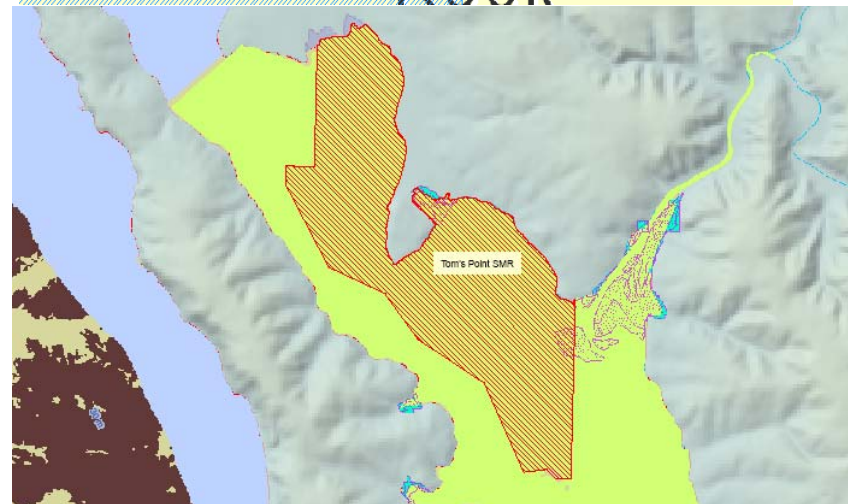
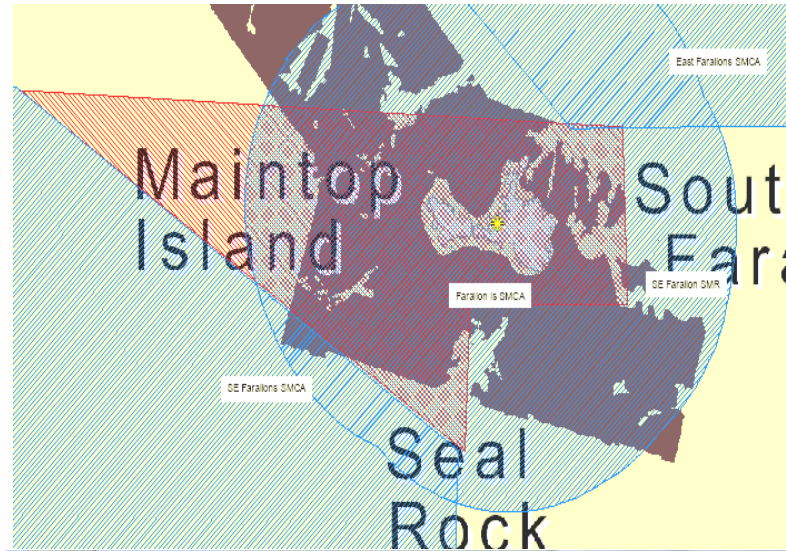
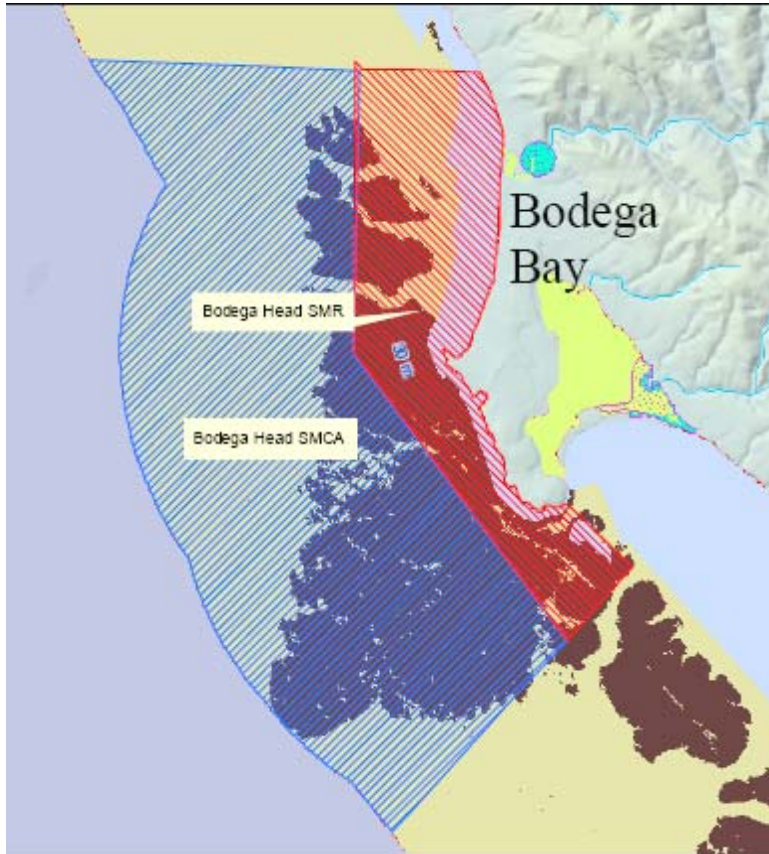


Examples: L- Shaped Doughnut Designs



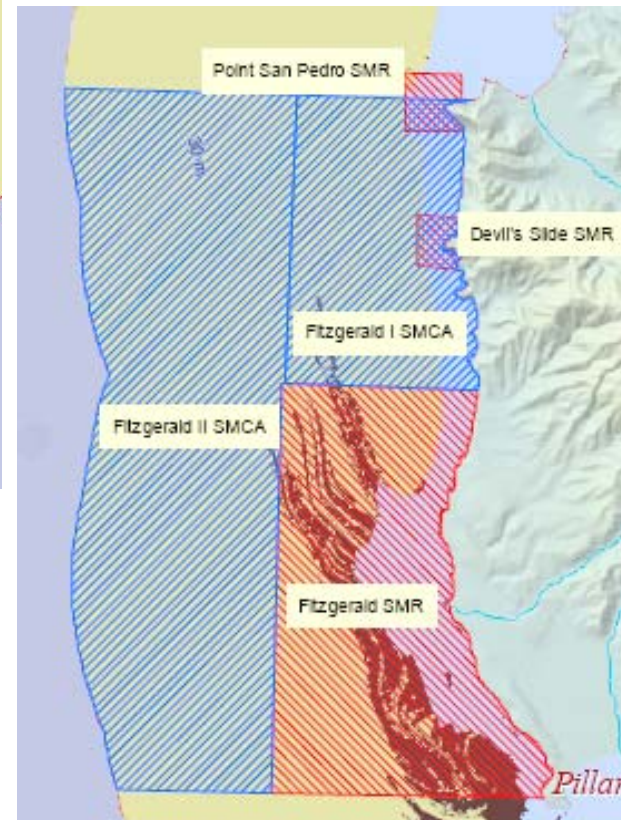
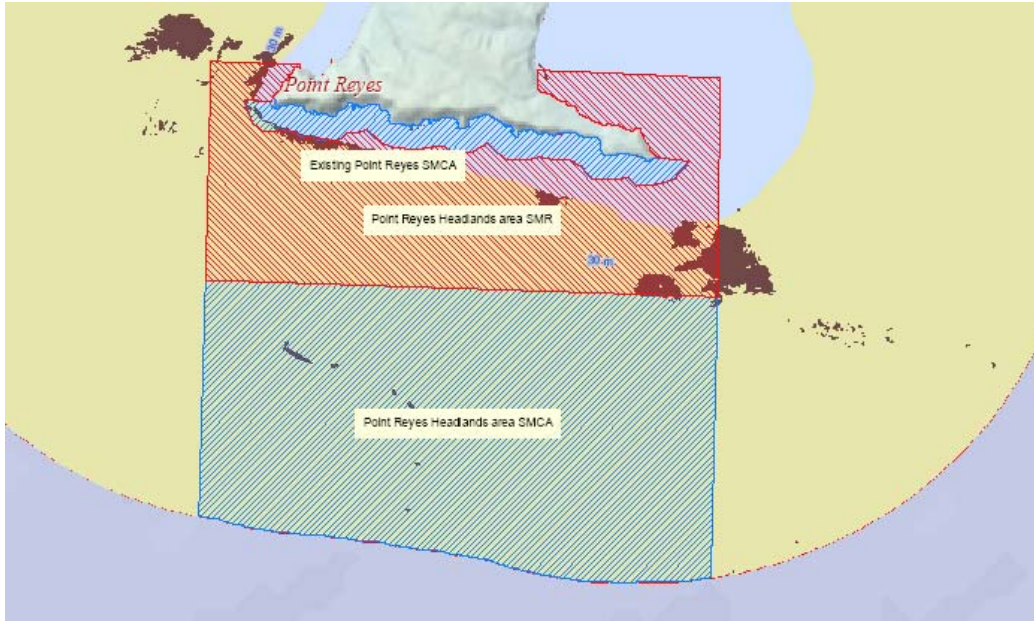


Examples: Irregular Lines



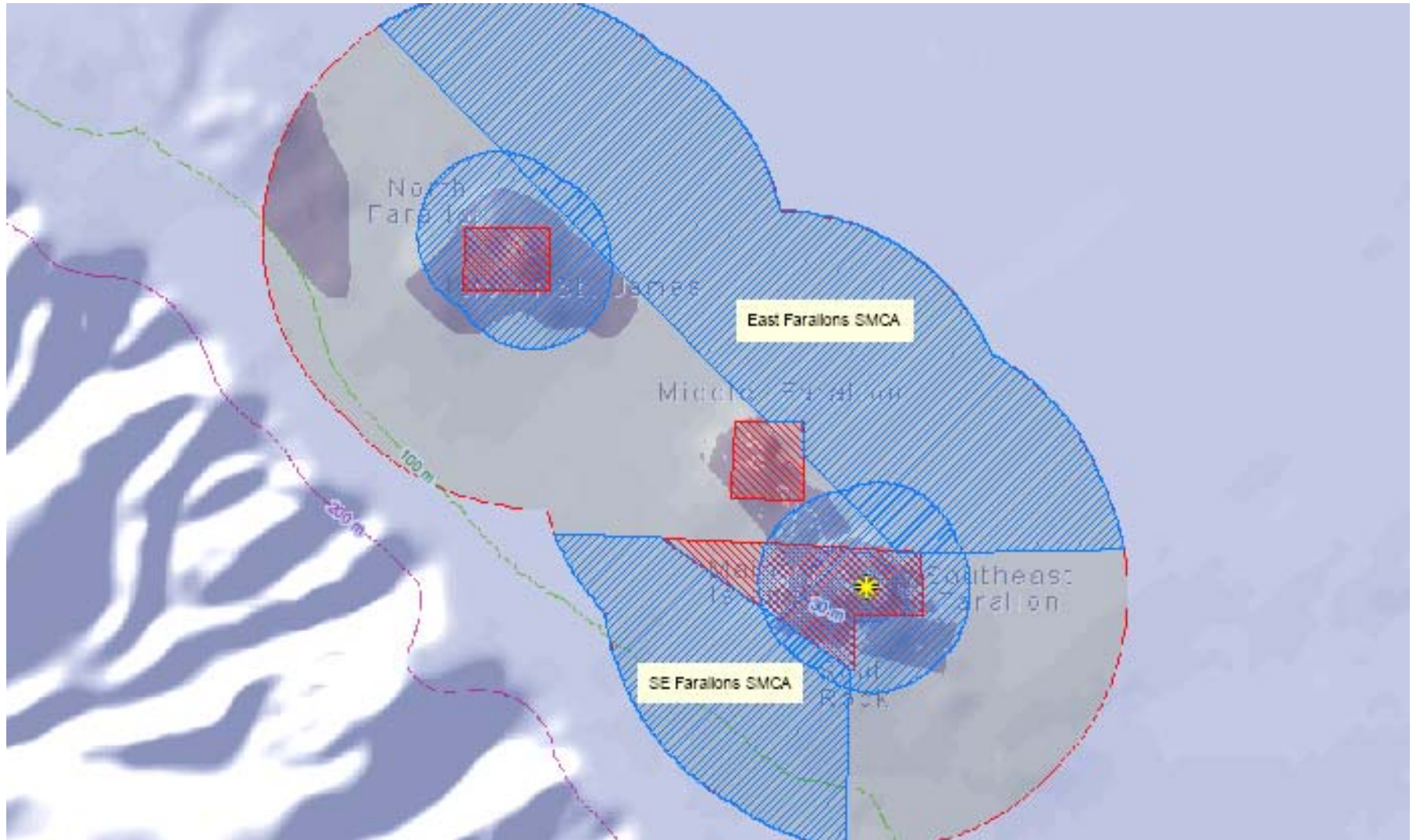


Examples: Multiple Zoning





Examples: "elbows" & overlapping designations

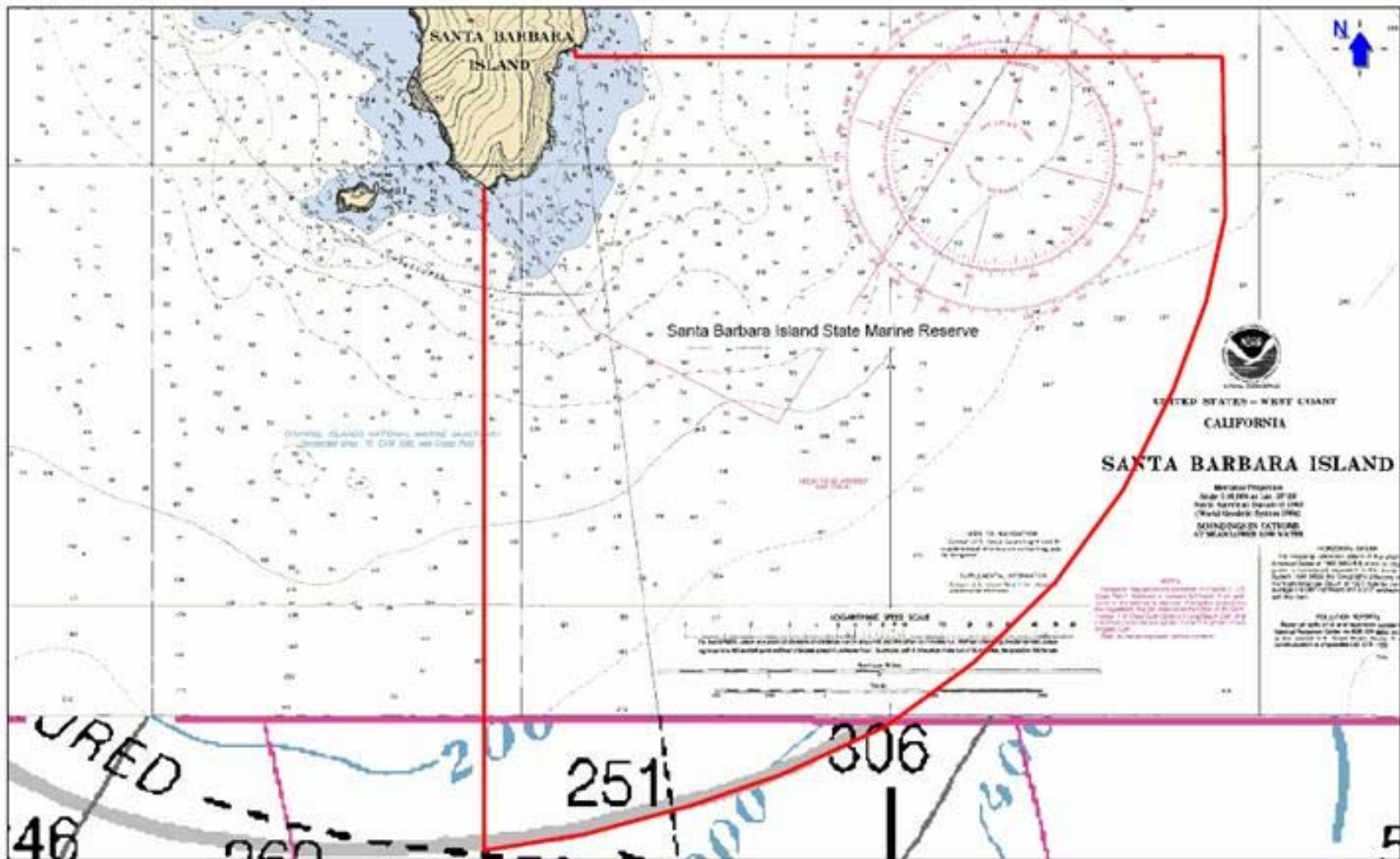




Acceptable design from Channel Islands

SANTA BARBARA ISLAND STATE MARINE RESERVE
Depth Units: FATHOMS

THIS CHART DOES NOT REPLACE THE LEGAL DESCRIPTION FOUND IN TITLE 14, CALIFORNIA CODE OF REGULATIONS



DO NOT USE FOR NAVIGATION PURPOSES
Printed by ChartView™ from Nobeltec Corporation (503) 579-1414

Nautical Miles
0.00 0.50 1.00 1.50



Summary of Feasibility Elements- Initial Arrays

Array Name	Total # of MPAs	Goals Defined (%)	Objectives Defined (%)	Accessibility (%)	Simple & Clear Regulations (%)	Meets Boundary Guidelines (%)	Meets Multiple Zoning Guidelines (i.e. doughnut or L-shaped designs) (%)
Turquoise A	23	100	0	96	57	17	74
Turquoise B	22	100	0	95	41	18	68
Jade A	24	100	0	96	54	8	71
Jade B	17	100	0	100	59	18	88
Emerald A	26	88	0	96	69	12	77
Emerald B	31	87	0	97	55	10	65
External A	16	0	0	100	56	6	75
External B	15	100	100	100	100	40	73
External C	19	79	0	100	58	21	100
External D	20	95	95	100	70	0	55
Totals	213	87	16	98	61	14	74



Summary of Feasibility Elements- Initial Arrays

Array Name	Total # of MPAs	Goals Defined (%)	Objectives Defined (%)	Accessibility (%)	Simple & Clear Regulations (%)	Meets Boundary Guidelines (%)	Meets Multiple Zoning Guidelines (i.e. doughnut or L-shaped designs) (%)
Turquoise A	23	100	0	96	57	17	74
Turquoise B	22	100	0	95	41	18	68
Jade A	24	100	0	96	54	8	71
Jade B	17	100	0	100	59	18	88
Emerald A	26	88	0	96	69	12	77
Emerald B	31	87	0	97	55	10	65
External A	16	0	0	100	56	6	75
External B	15	100	100	100	100	40	73
External C	19	79	0	100	58	21	100
External D	20	95	95	100	70	0	55
Totals	213	87	16	98	61	14	74



Summary

- Feasibility criteria will be used by the Department to form recommendations to the Fish and Game Commission.
- Initial feasibility evaluations are intended to help focus the RSG workgroups as they develop initial MPA proposals from draft MPA arrays.
- The criteria taken together should form the guiding principle used in designing MPA proposals (along with MLPA Master Plan and science guidelines).



Special Closures memo

- Interest in closed areas to reduce disturbance to sea birds (nesting, breeding, roosting) and marine mammals (rookeries, haul-outs, breeding colonies)
- Department memo prepared October 19: *Special Closures as they apply to the Marine Life Protection Act*
 1. Recommends that any no-access regulations be proposed as Special Closures
 2. Recommends SAT analysis: year-round versus seasonal
- Be specific about what species you are protecting and why
- Be judicious along coastline (public access points, public beaches and public awareness are issues).