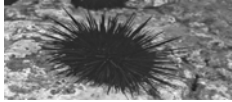


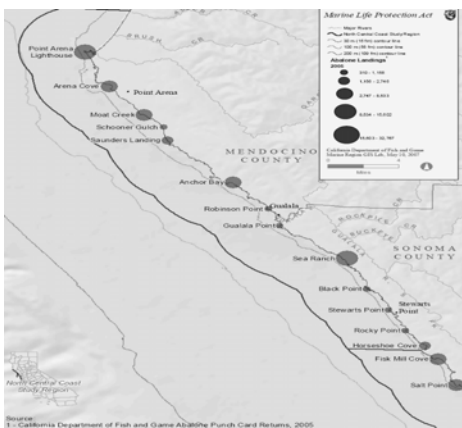
Marine Invertebrate Fisheries of the MLPA North Central Coast Study Region

- *Abalone*
- *Mussels/Tidepooling*
- *Sport Clamming*
- *Commercial/Sport Dungeness Crab*
- *Commercial Sea Urchin*



DFG Abalone Creel Census





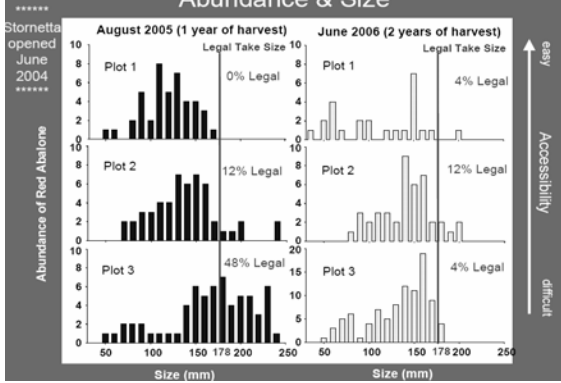
Stornetta Ranch opened to public June 2004



PISCO Biologists at Stornetta



Abundance & Size

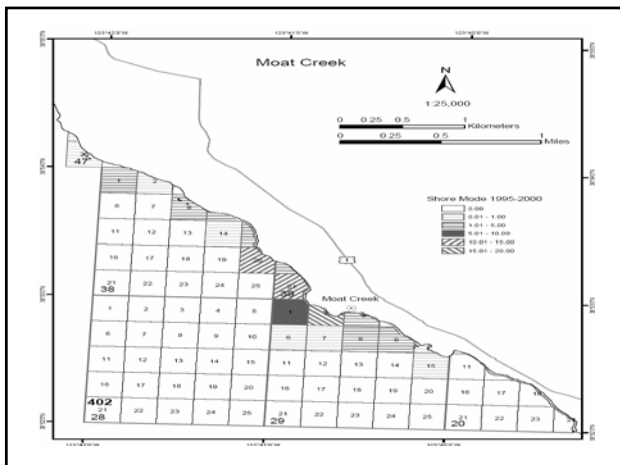


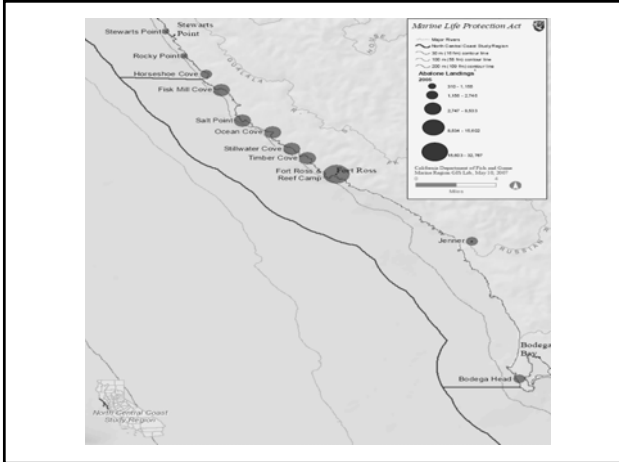
6AM at Moat Creek on an Abalone Tide

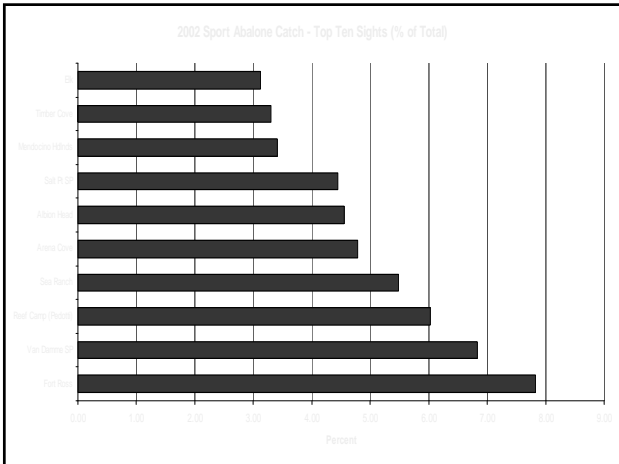


Moat Creek Abalone Shorepickers at Dawn









DFG SCUBA Abalone/Urchin Survey

