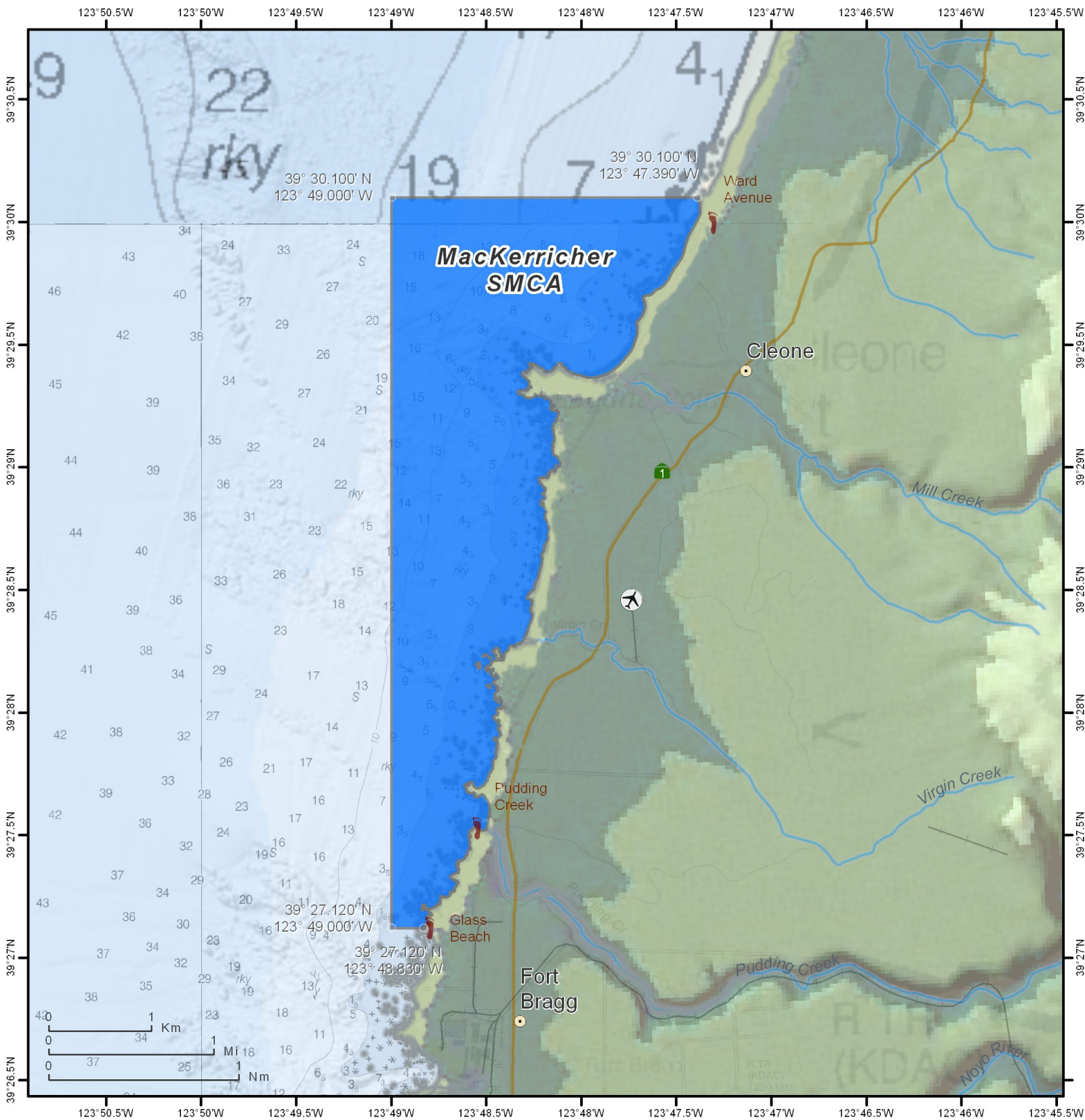


California Marine Protected Areas



THIS CHART DOES NOT REPLACE THE LEGAL DESCRIPTION FOUND IN TITLE 14, CALIFORNIA CODE OF REGULATIONS

- | | | | |
|--|---|---|---|
|  State Marine Reserve (SMR) |  State Marine Recreational Management Area (SMRMA) |  Dual Designation (SMCA and SMP) |  Three Nautical Mile Maritime Limit (State Water Jurisdiction) |
|  State Marine Conservation Area (SMCA - No Take) |  State Marine Park (SMP) |  Federal Marine Conservation Area (FMCA) |  Coastal Access |
|  State Marine Conservation Area (SMCA) |  Special Closure |  Federal Marine Reserve (FMR) |  |

1:50,000
(print size 8.5" x 11")

