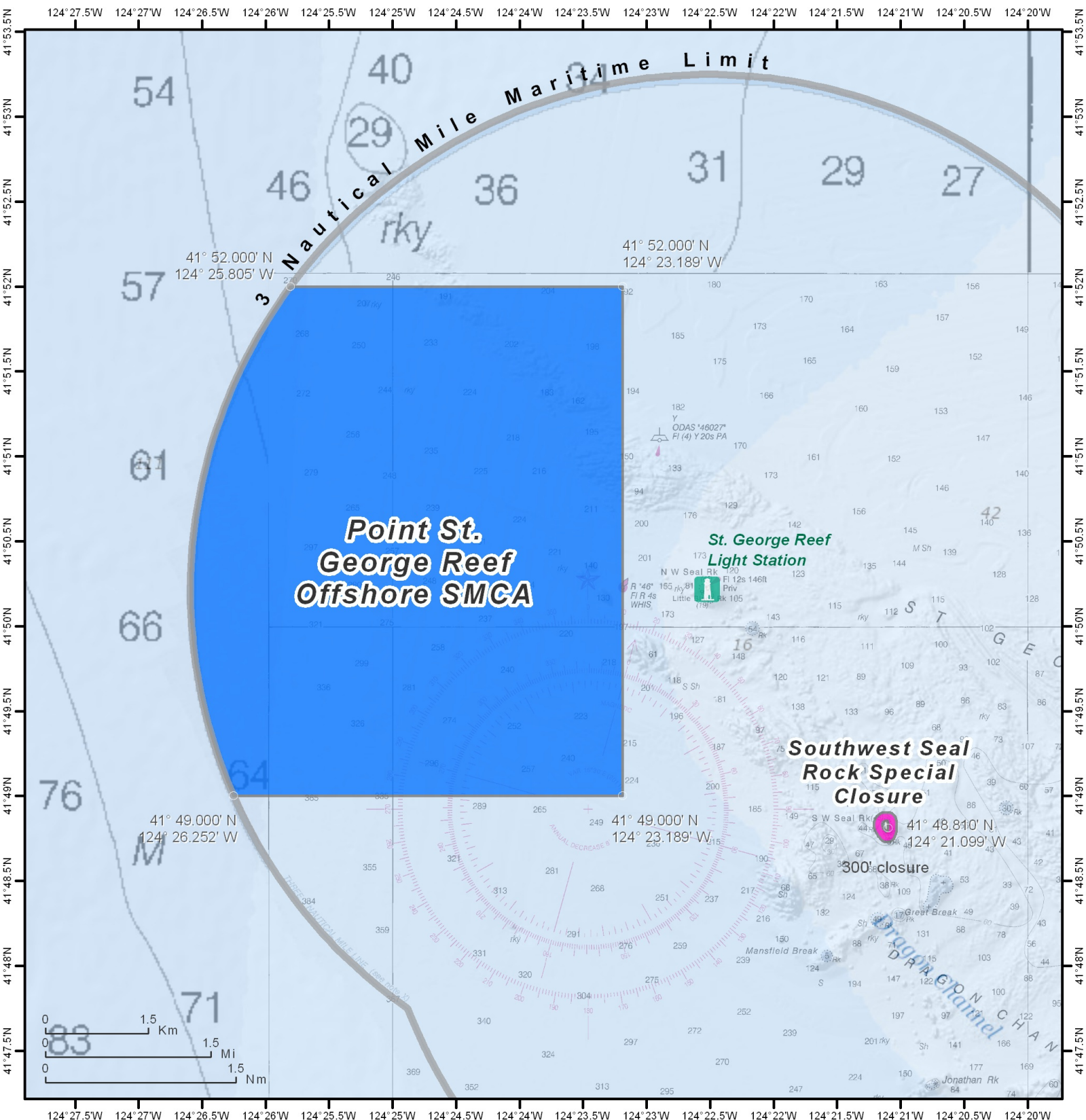


California Marine Protected Areas



THIS CHART DOES NOT REPLACE THE LEGAL DESCRIPTION FOUND IN TITLE 14, CALIFORNIA CODE OF REGULATIONS

- | | | | | | | | | |
|--|---|---|---|---|---|---|---|---|
|  | State Marine Reserve (SMR) |  | State Marine Recreational Management Area (SMRMA) |  | Dual Designation (SMCA and SMP) |  | Three Nautical Mile Maritime Limit (State Water Jurisdiction) |  |
|  | State Marine Conservation Area (SMCA - No Take) |  | State Marine Park (SMP) |  | Federal Marine Conservation Area (FMCA) |  | Coastal Access | 1:75,000 |
|  | State Marine Conservation Area (SMCA) |  | Special Closure |  | Federal Marine Reserve (FMR) | | | (print size 8.5" x 11") |