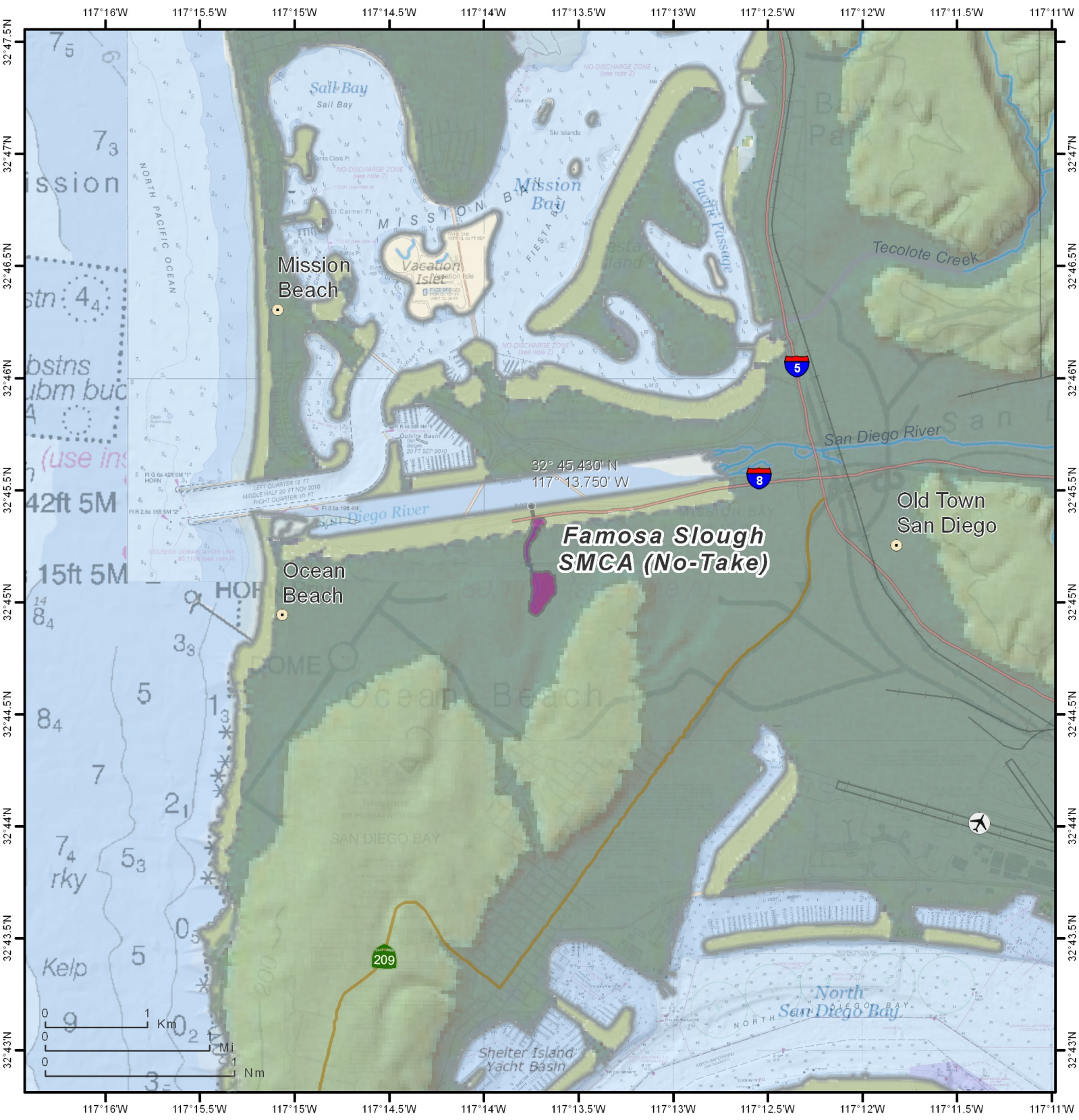


# California Marine Protected Areas



THIS CHART DOES NOT REPLACE THE LEGAL DESCRIPTION FOUND IN TITLE 14, CALIFORNIA CODE OF REGULATIONS

- |  |   |   |   |
|--|---|---|---|
|  State Marine Reserve (SMR)                      |  State Marine Recreational Management Area (SMRMA) |  Dual Designation (SMCA and SMP)         |  Three Nautical Mile Maritime Limit (State Water Jurisdiction) |
|  State Marine Conservation Area (SMCA - No Take) |  State Marine Park (SMP)                           |  Federal Marine Conservation Area (FMCA) |  Coastal Access  |
|  State Marine Conservation Area (SMCA)           |  Special Closure                                   |  Federal Marine Reserve (FMR)            |    |

1:50,000  
(print size 8.5" x 11")

