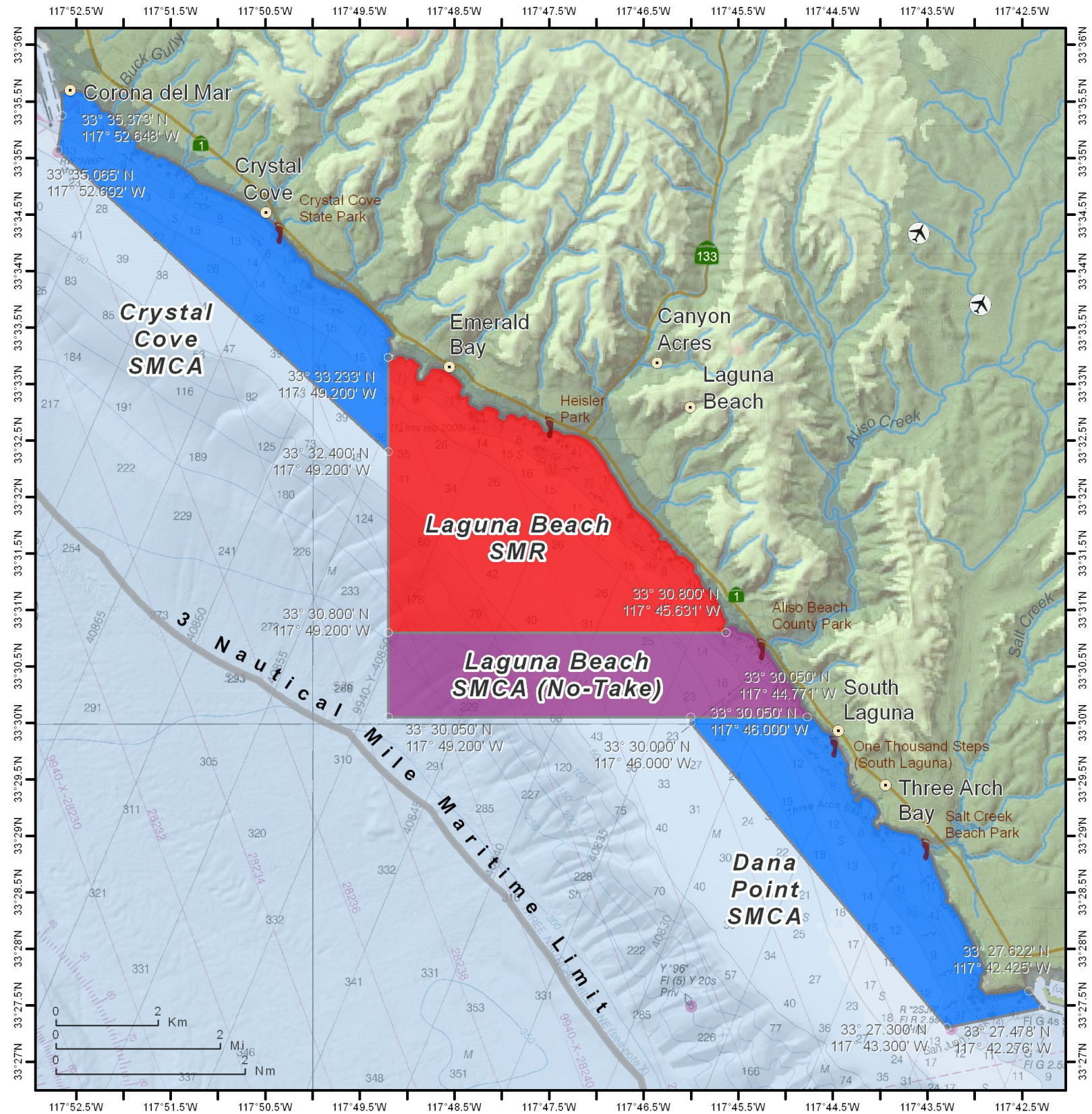


# California Marine Protected Areas



THIS CHART DOES NOT REPLACE THE LEGAL DESCRIPTION FOUND IN TITLE 14, CALIFORNIA CODE OF REGULATIONS

 State Marine Reserve (SMR)	 State Marine Recreational Management Area (SMRMA)	 Dual Designation (SMCA and SMP)	 Three Nautical Mile Maritime Limit (State Water Jurisdiction)
 State Marine Conservation Area (SMCA - No Take)	 State Marine Park (SMP)	 Federal Marine Conservation Area (FMCA)	 Coastal Access
 State Marine Conservation Area (SMCA)	 Special Closure	 Federal Marine Reserve (FMR)	 1:100,000 (print size 8.5" x 11")