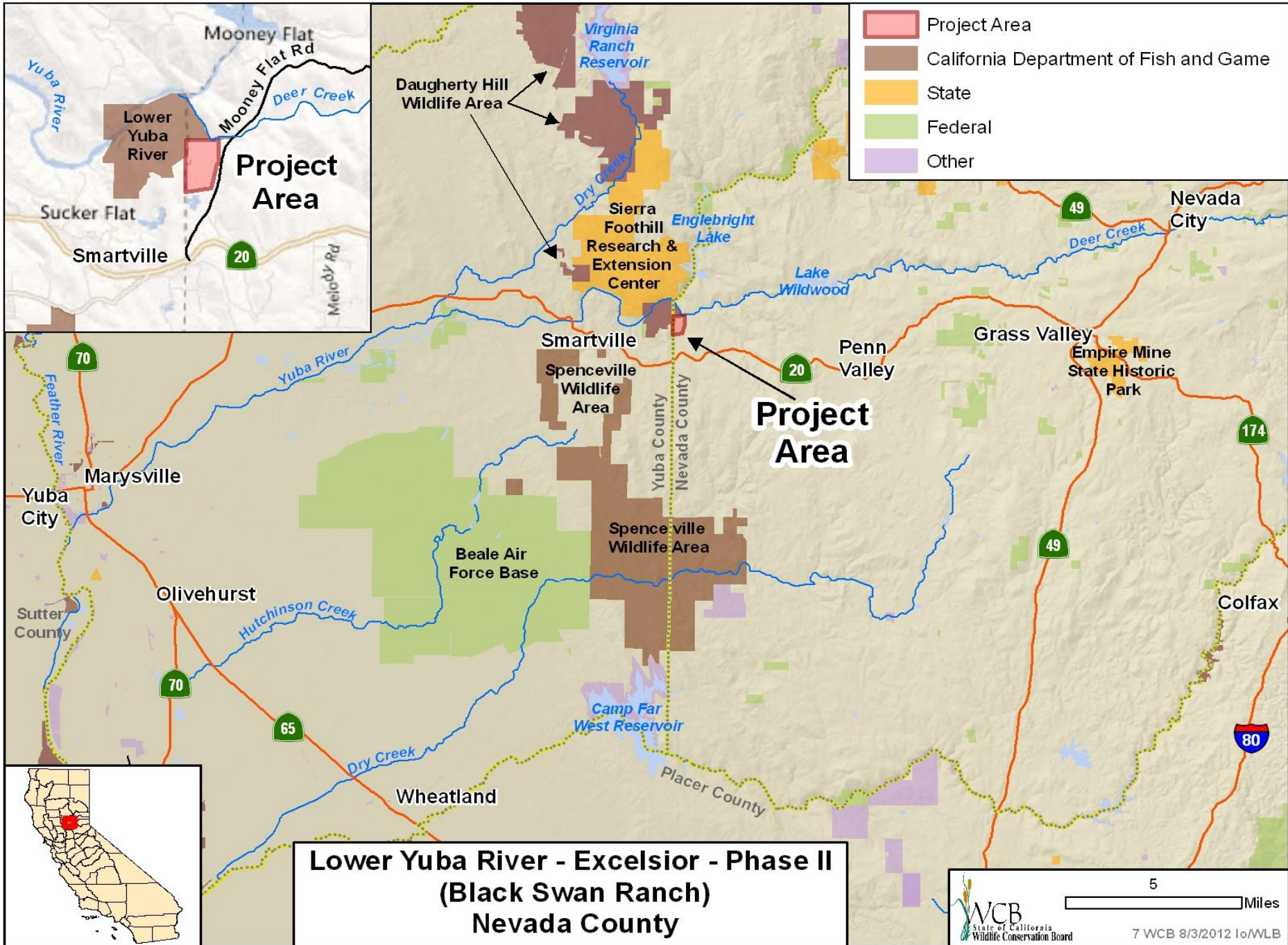




August 30, 2012
Wildlife Conservation Board Meeting
10:00 AM, State Capitol, Room 112
Sacramento, California 95814

Conaway Ranch Conservation Easement, Yolo County
Photo by Erin Ingenthron



7. Lower Yuba River – Excelsior – Phase II
(Black Swan Ranch)
Nevada County



■ Pond located on Black Swan Ranch

7. Lower Yuba River – Excelsior – Phase II
(Black Swan Ranch)
Nevada County



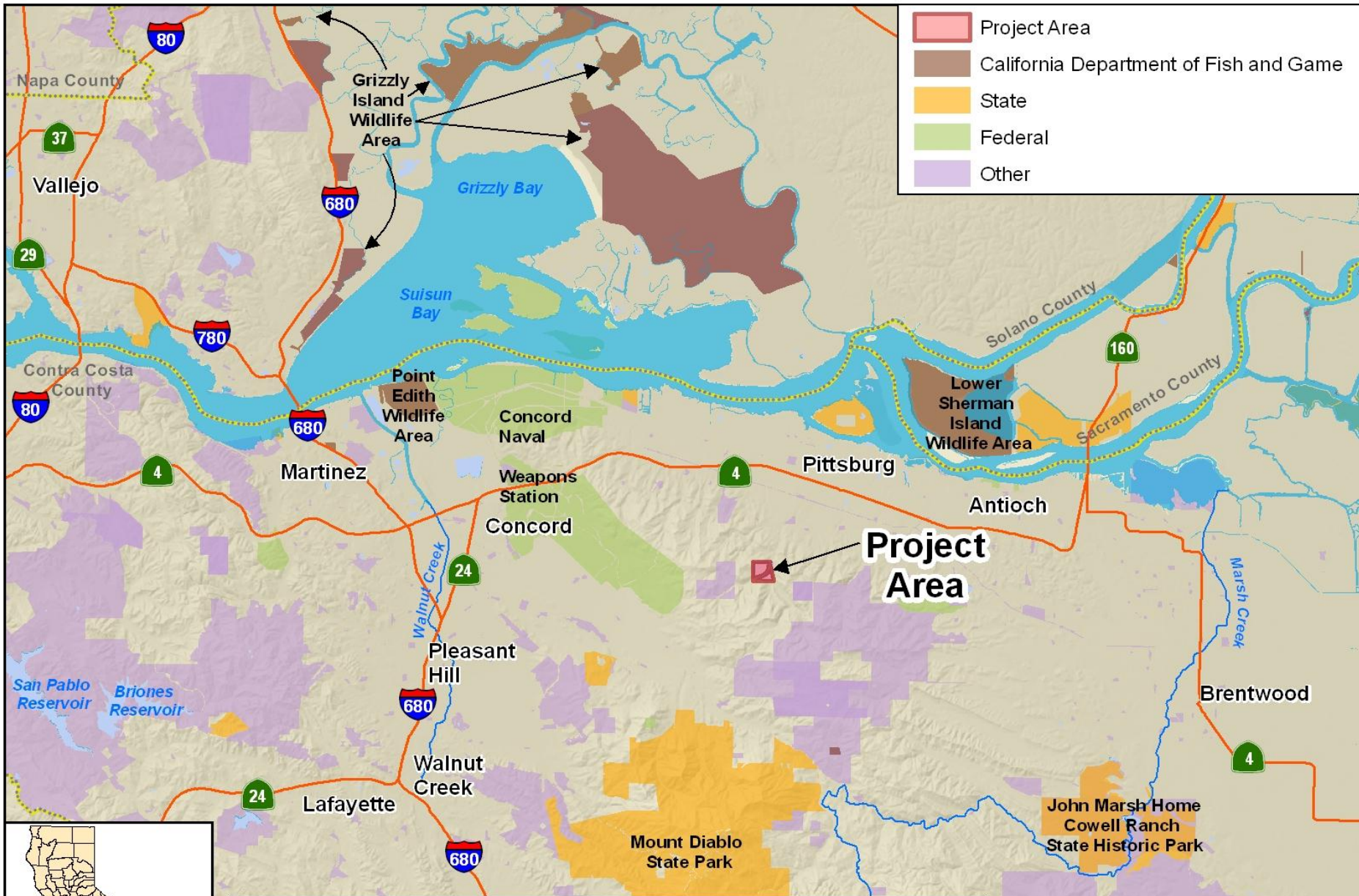
(Photo courtesy of Brian Bisnett)

- Chinese walls at Rose's Garden – Phase Two

7. Lower Yuba River – Excelsior – Phase II
(Black Swan Ranch)
Nevada County



■ Scenic View of the Black Swan Ranch



- Project Area
- California Department of Fish and Game
- State
- Federal
- Other



San Joaquin Multi-Species Conservation Plan (2008)
Thomas North
Contra Costa County

8. San Joaquin Multi-Species Conservation Plan
(2008) Thomas North
Contra Costa County



■ Looking west

8. San Joaquin Multi-Species Conservation Plan
(2008) Thomas North
Contra Costa County



■ Northwestern property line

8. San Joaquin Multi-Species Conservation Plan
(2008) Thomas North
Contra Costa County



■ Northwest across the property

8. San Joaquin Multi-Species Conservation Plan
(2008) Thomas North
Contra Costa County

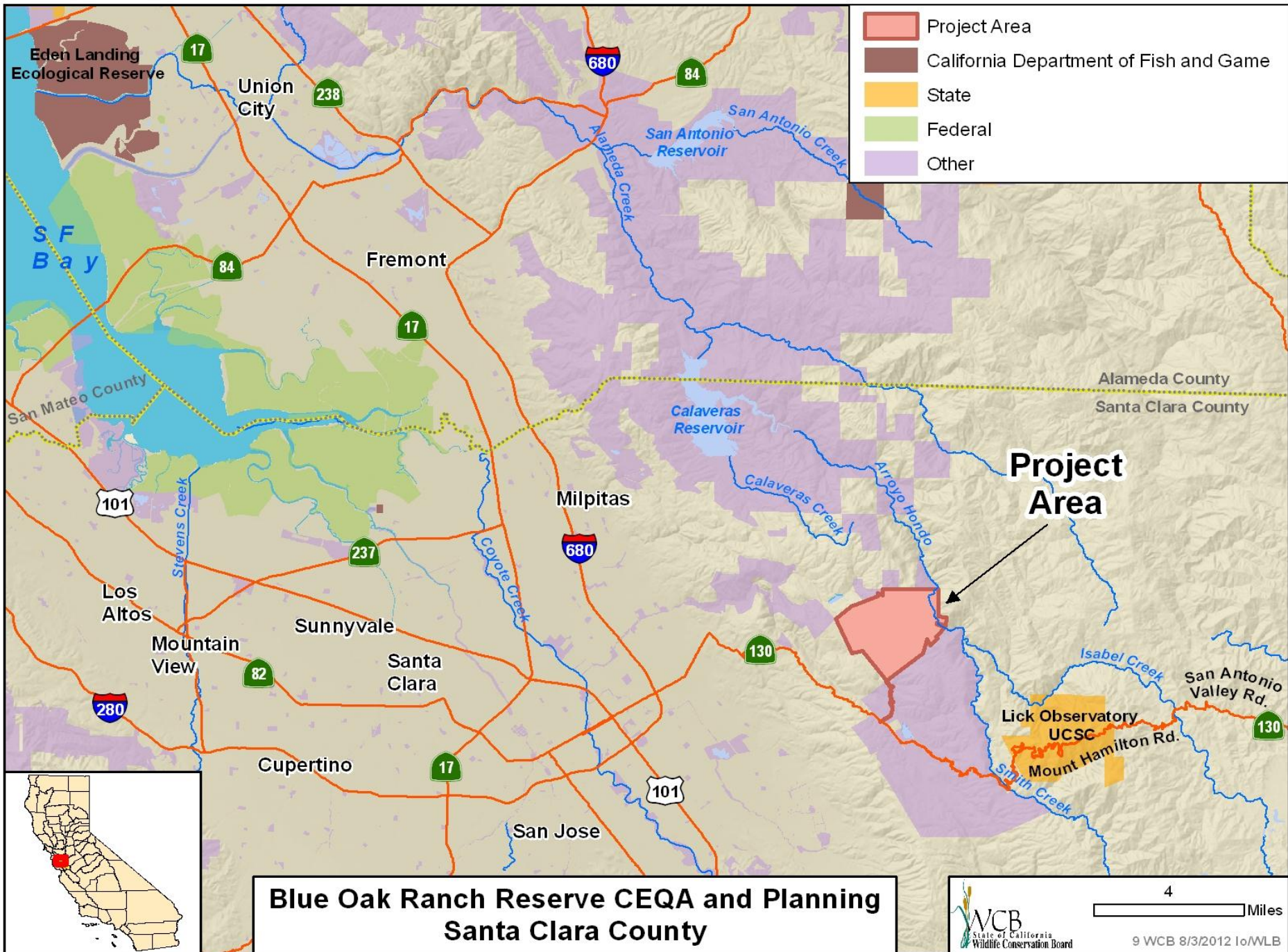


■ Kirker Pass Road

8. San Joaquin Multi-Species Conservation Plan
(2008) Thomas North
Contra Costa County



■ Southern View



9. Blue Oak Ranch Reserve CEQA and Planning Santa Clara County



- The long term plan is to remodel the existing barn to become the Community Center on the Reserve. It will have a large dining space for groups, kitchen and prep areas as well as dormitory rooms for overnight accommodations.

9. Blue Oak Ranch Reserve CEQA and Planning Santa Clara County



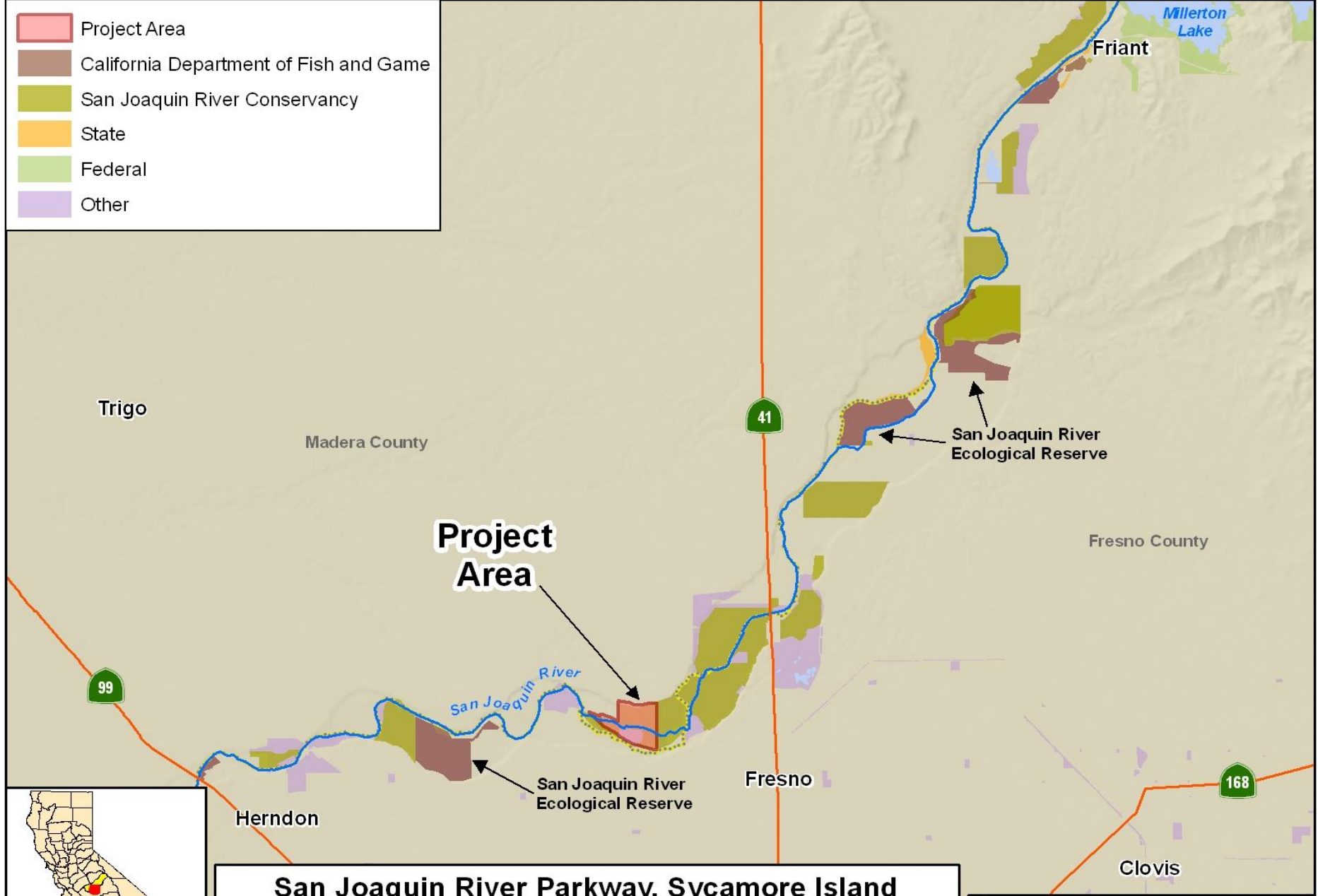
- Flat barren area where staff housing is being proposed.

9. Blue Oak Ranch Reserve CEQA and Planning Santa Clara County




- Gravel road will also be resurfaced as part of the long term goals. This project will address the planning, design, and CEQA requirements.

- Project Area
- California Department of Fish and Game
- San Joaquin River Conservancy
- State
- Federal
- Other




**San Joaquin River Parkway, Sycamore Island
North Channel Crossing Construction, Augmentation
Madera County**





WCB
State of California
Wildlife Conservation Board

2



Miles

10 WCB 8/3/2012 Io/WLB

10. San Joaquin River Parkway, Sycamore Island, North Channel Crossing Construction, Augmentation Madera County



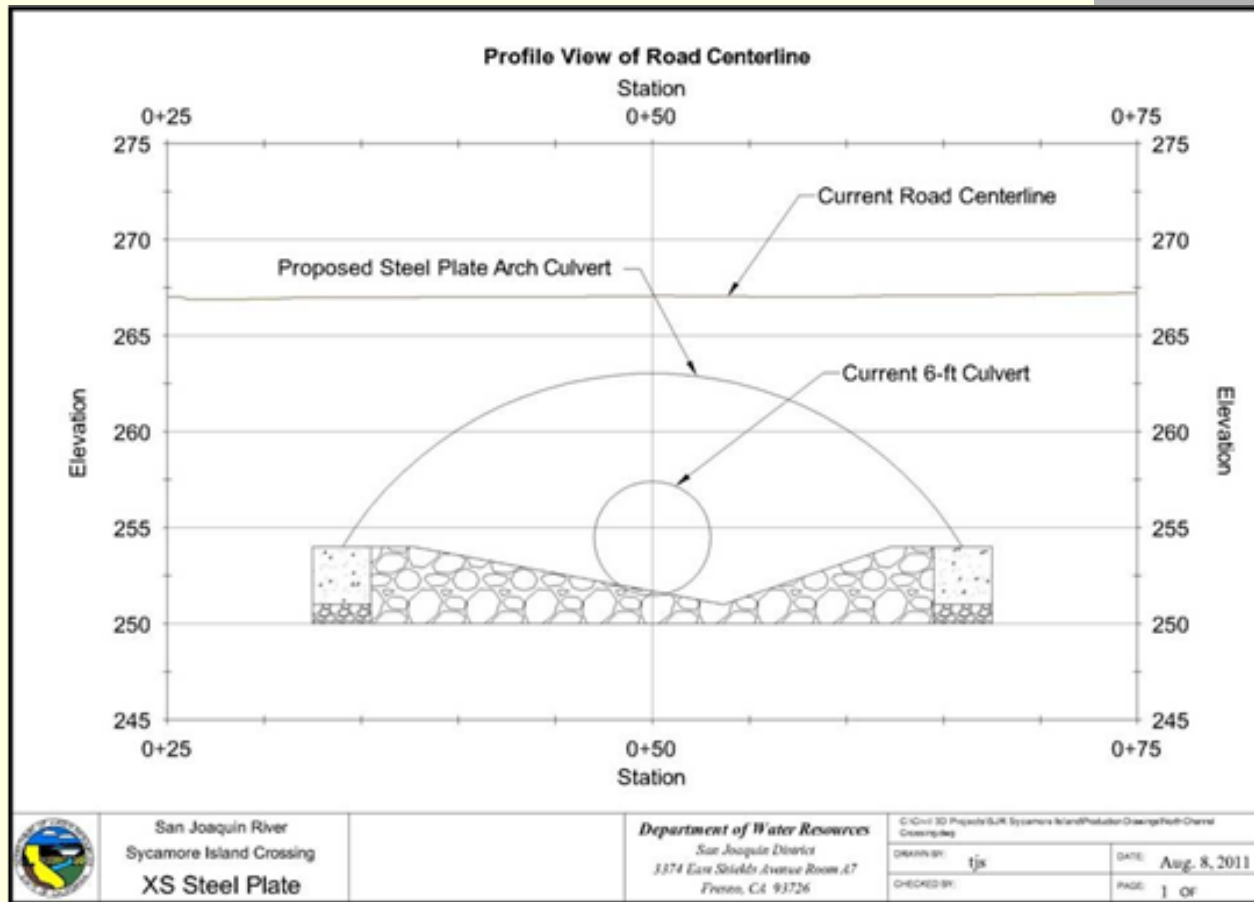
- Upstream end of culvert during 6000cfs release from Friant Dam, Jan 06, 2011

10. San Joaquin River Parkway, Sycamore Island, North Channel Crossing Construction, Augmentation Madera County



- Upstream end of culvert during after water receded, on February 25, 2011

10. San Joaquin River Parkway, Sycamore Island, North Channel Crossing Construction, Augmentation Madera County



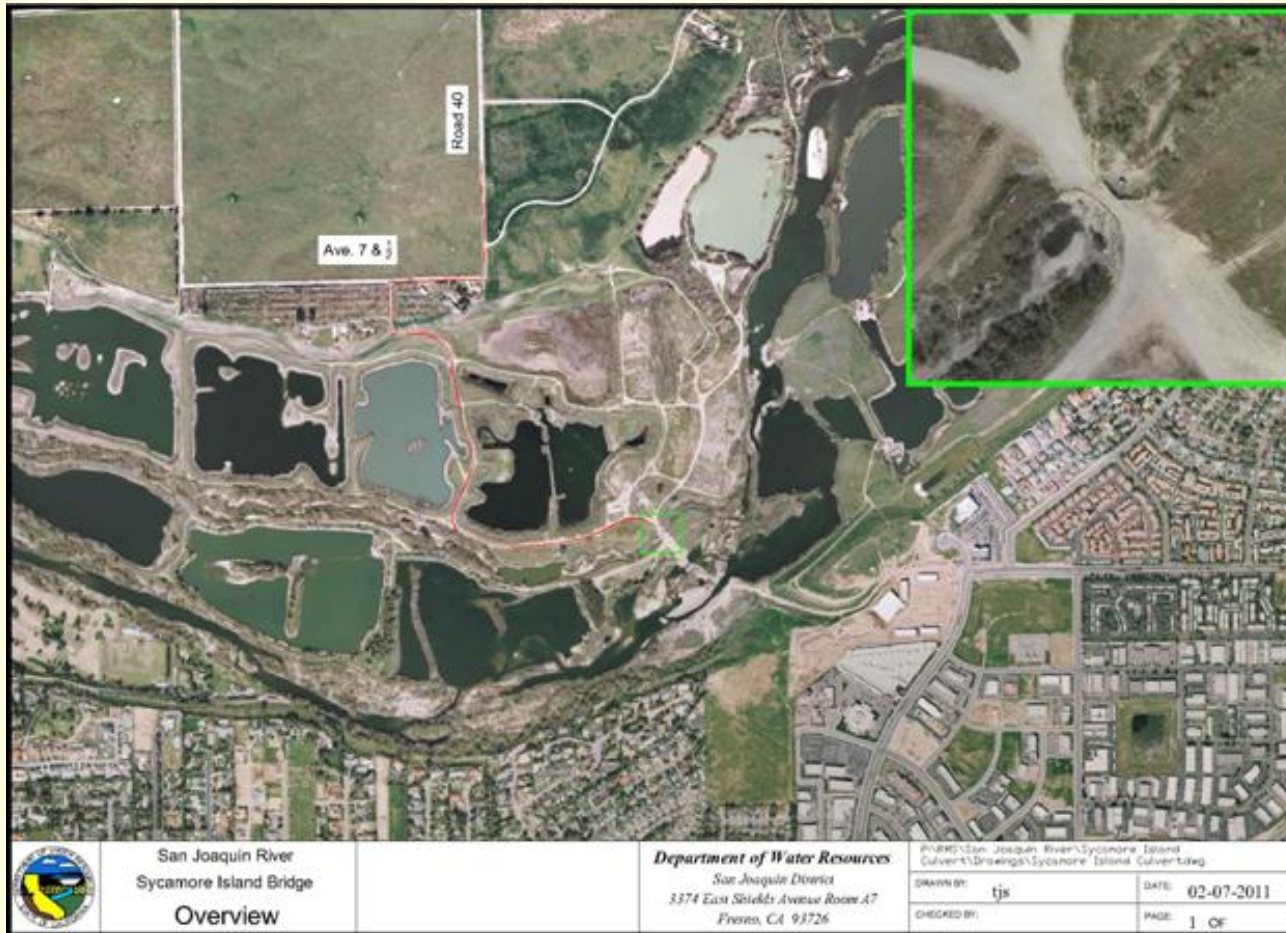
- Profile of the current culvert compared to proposed steel arch culvert

10. San Joaquin River Parkway, Sycamore Island,
North Channel Crossing Construction, Augmentation
Madera County

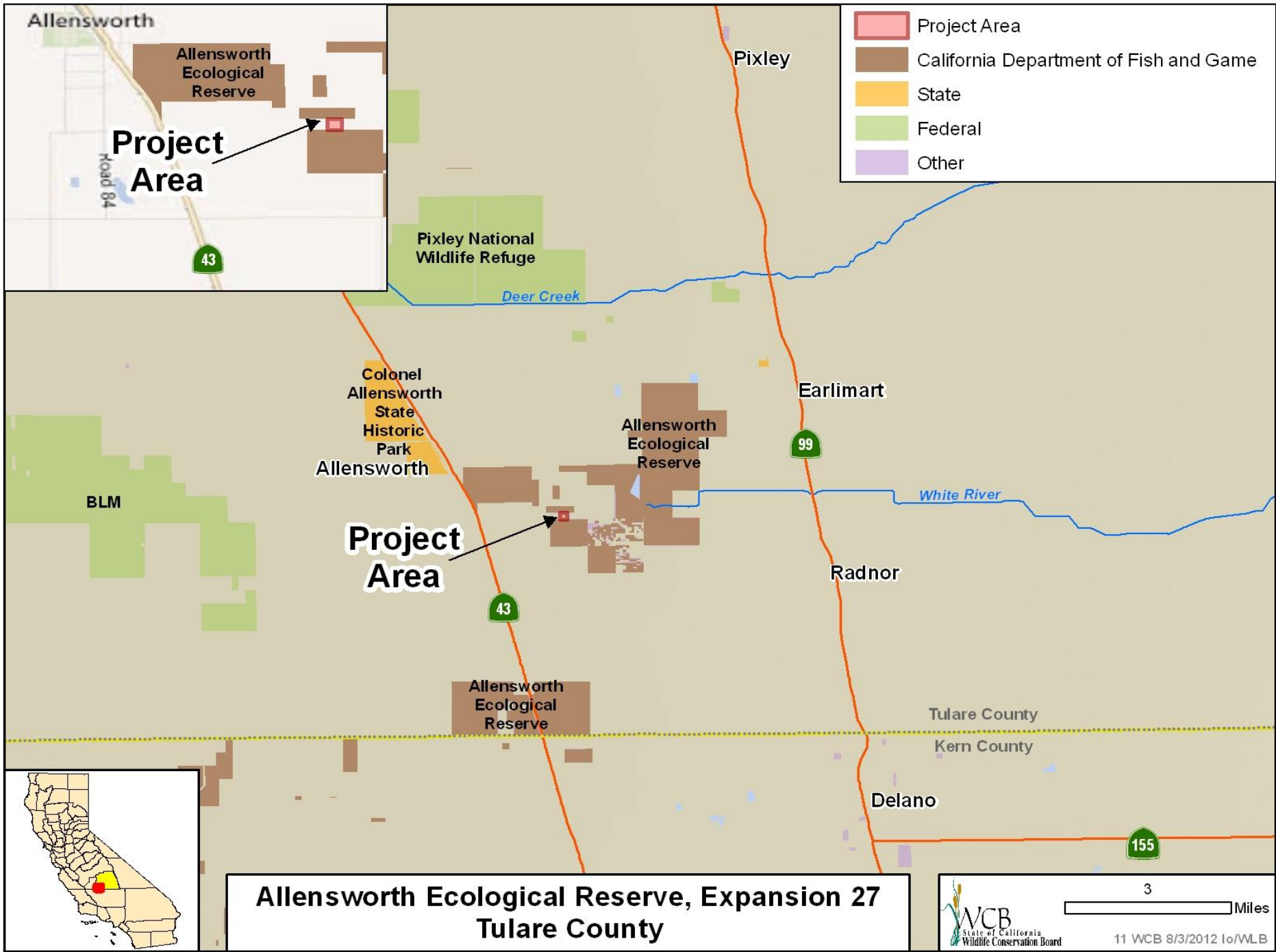


- Example of a steel arch culvert with cobble riprap.


10. San Joaquin River Parkway, Sycamore Island, North Channel Crossing Construction, Augmentation Madera County



■ Project location



**Allensworth Ecological Reserve, Expansion 27
Tulare County**



 3 Miles
 11 WCB 8/3/2012 Io/WLB



11. Allensworth Ecological Reserve, Salo Expansion
Tulare County



■ Burrowing Owl Habitat

11. Allensworth Ecological Reserve, Salo Expansion Tulare County



- Vineyard Operation on the East Side of the Property

11. Allensworth Ecological Reserve, Salo Expansion Tulare County

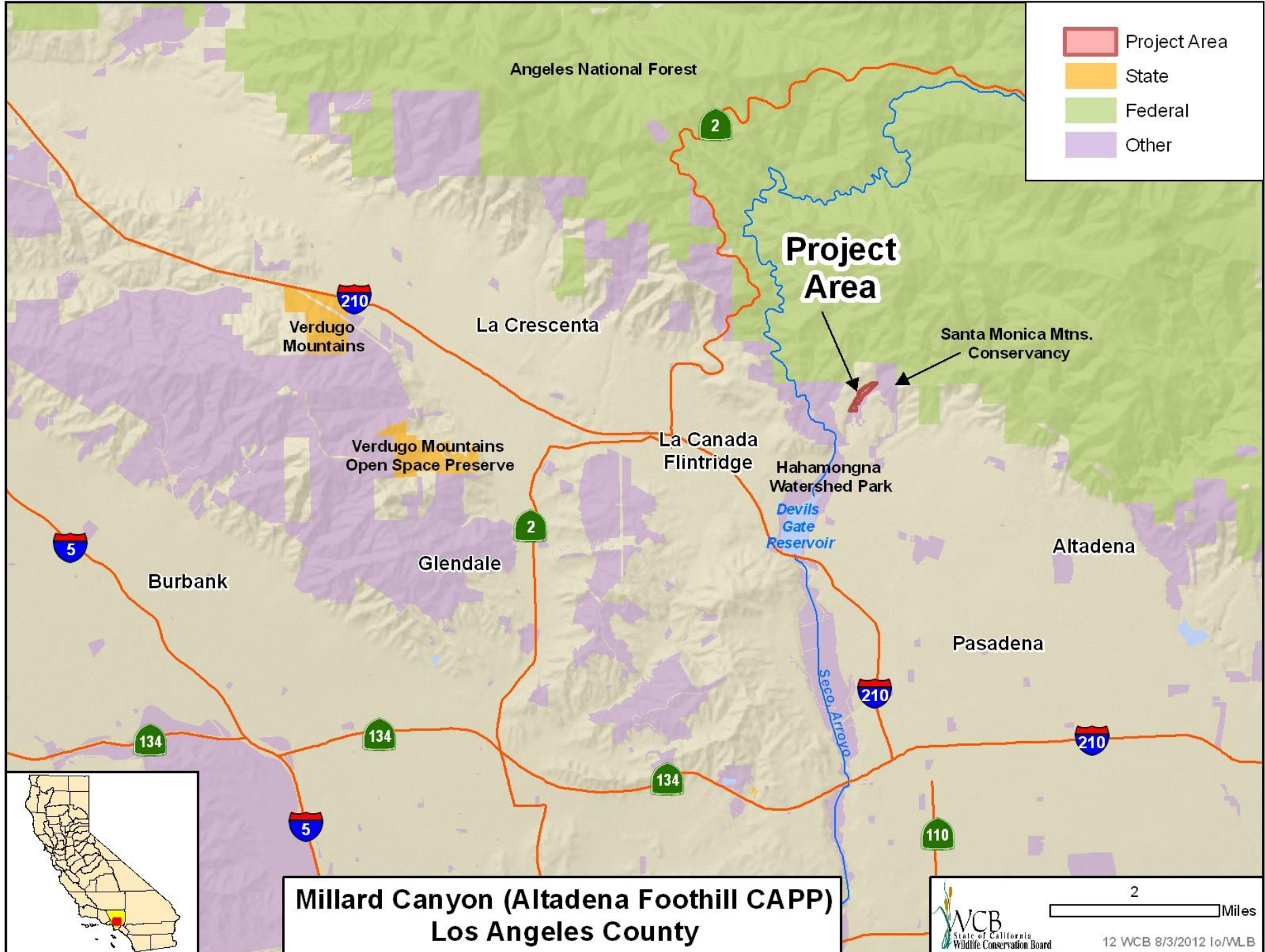


- View Looking South on the Property – Allensworth ER in the Background

11. Allensworth Ecological Reserve, Salo Expansion Tulare County



- Small Farm / Cattle Ranch due East



- Project Area
- State
- Federal
- Other

Project Area

**Millard Canyon (Altadena Foothill CAPP)
Los Angeles County**

12. Millard Canyon
Los Angeles County



- Mature oaks on lower portion of property

12. Millard Canyon Los Angeles County



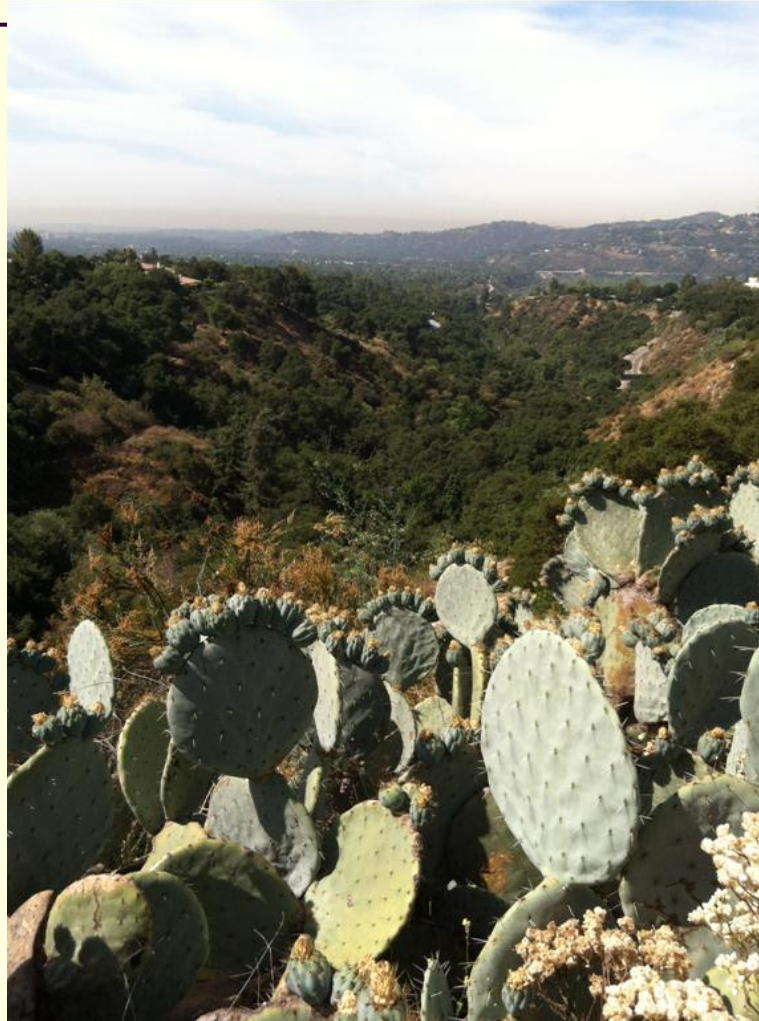
- Downstream flood protection area

12. Millard Canyon Los Angeles County



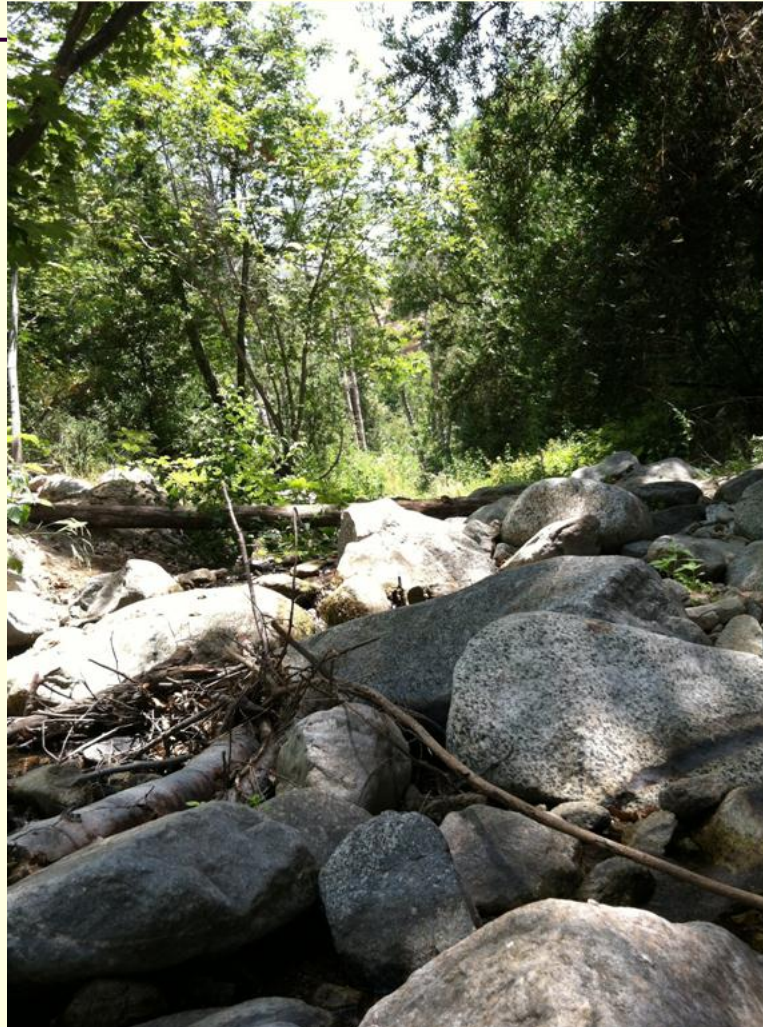
- View of Millard Canyon looking East (up canyon)

12. Millard Canyon Los Angeles County

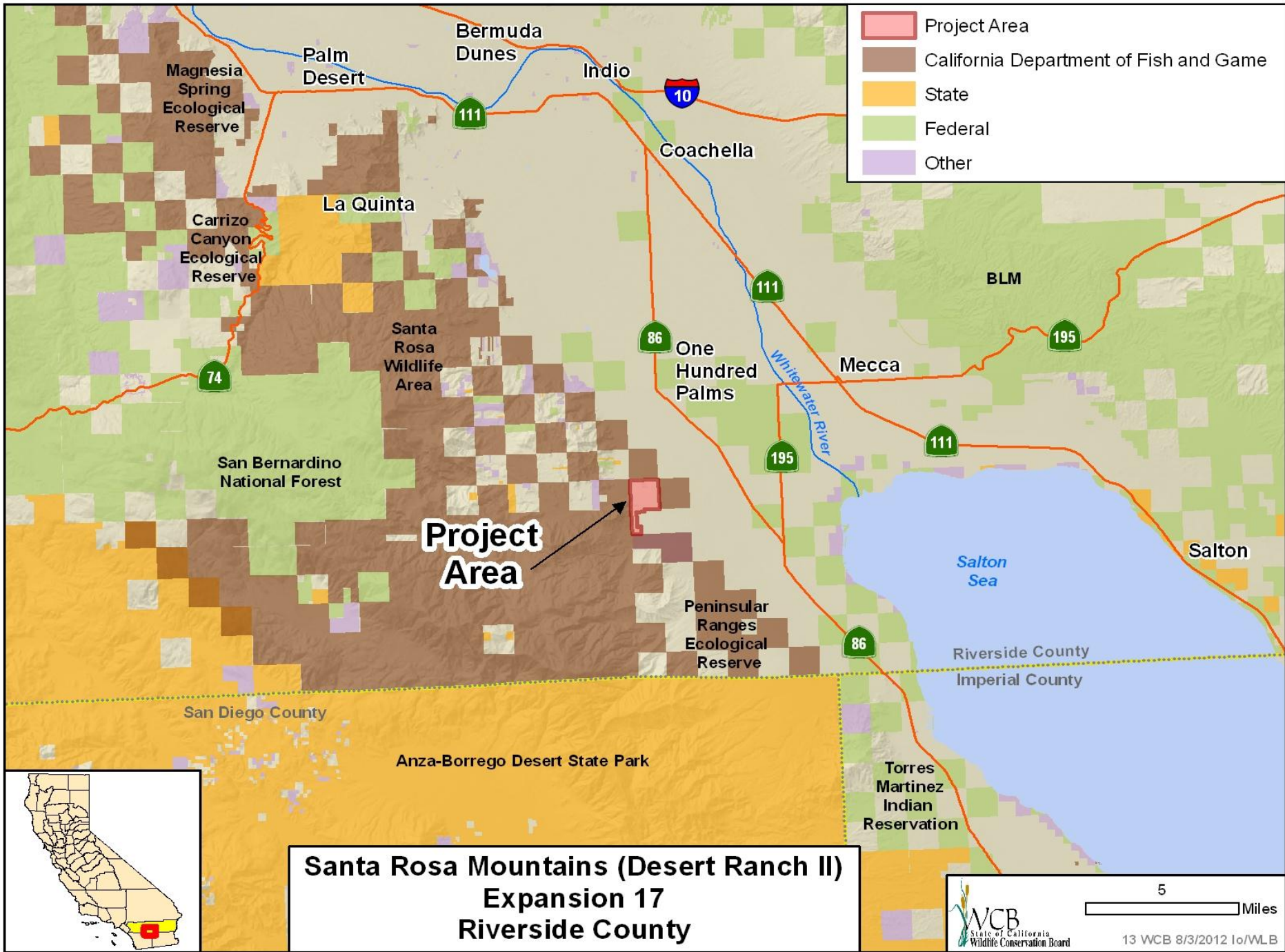


- View of Millard Canyon Looking South (down Canyon)

12. Millard Canyon Los Angeles County



- Undisturbed riparian habitat



**Santa Rosa Mountains (Desert Ranch II)
Expansion 17
Riverside County**



5 Miles

13. Santa Rosa Mountains (Desert Ranch II)
Expansion 17
Riverside County



- Northwest view of connectivity to critical bighorn sheep habitat in Bureau of Land Management wilderness

13. Santa Rosa Mountains (Desert Ranch II)
Expansion 17
Riverside County

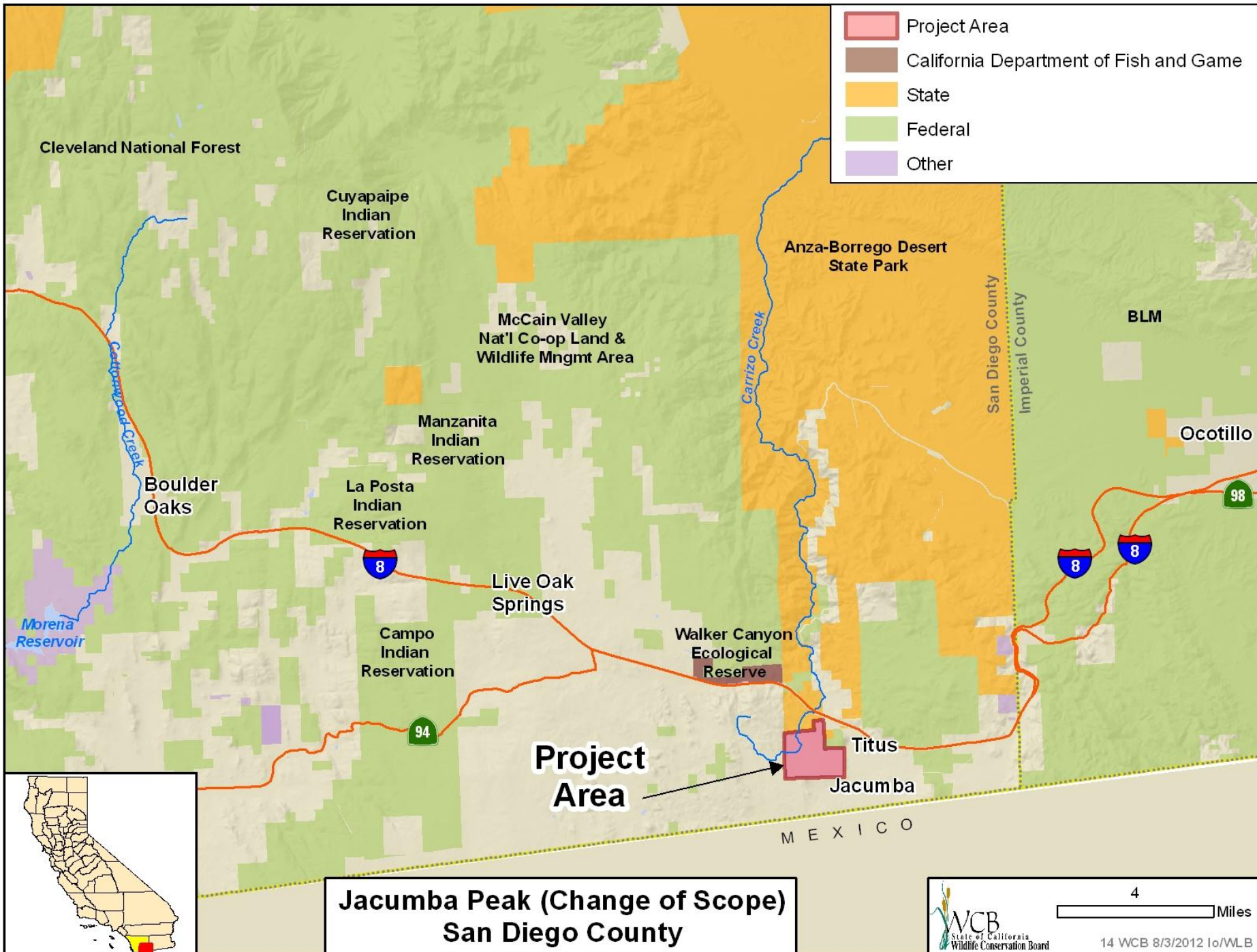


- View from the north of undeveloped alluvial fan habitat connecting an isolated Bureau of Land Management section

13. Santa Rosa Mountains (Desert Ranch II)
Expansion 17
Riverside County




- Southeast view of the northern tip of the Salton Sea and adjacent Department of Fish and Game Santa Rosa Wildlife Area



- Project Area
- California Department of Fish and Game
- State
- Federal
- Other

**Jacumba Peak (Change of Scope)
San Diego County**



WCB
State of California
Wildlife Conservation Board

4

Miles

14 WCB 8/3/2012 Io/WLB

14. Jacumba Peak (Change of Scope)
San Diego County

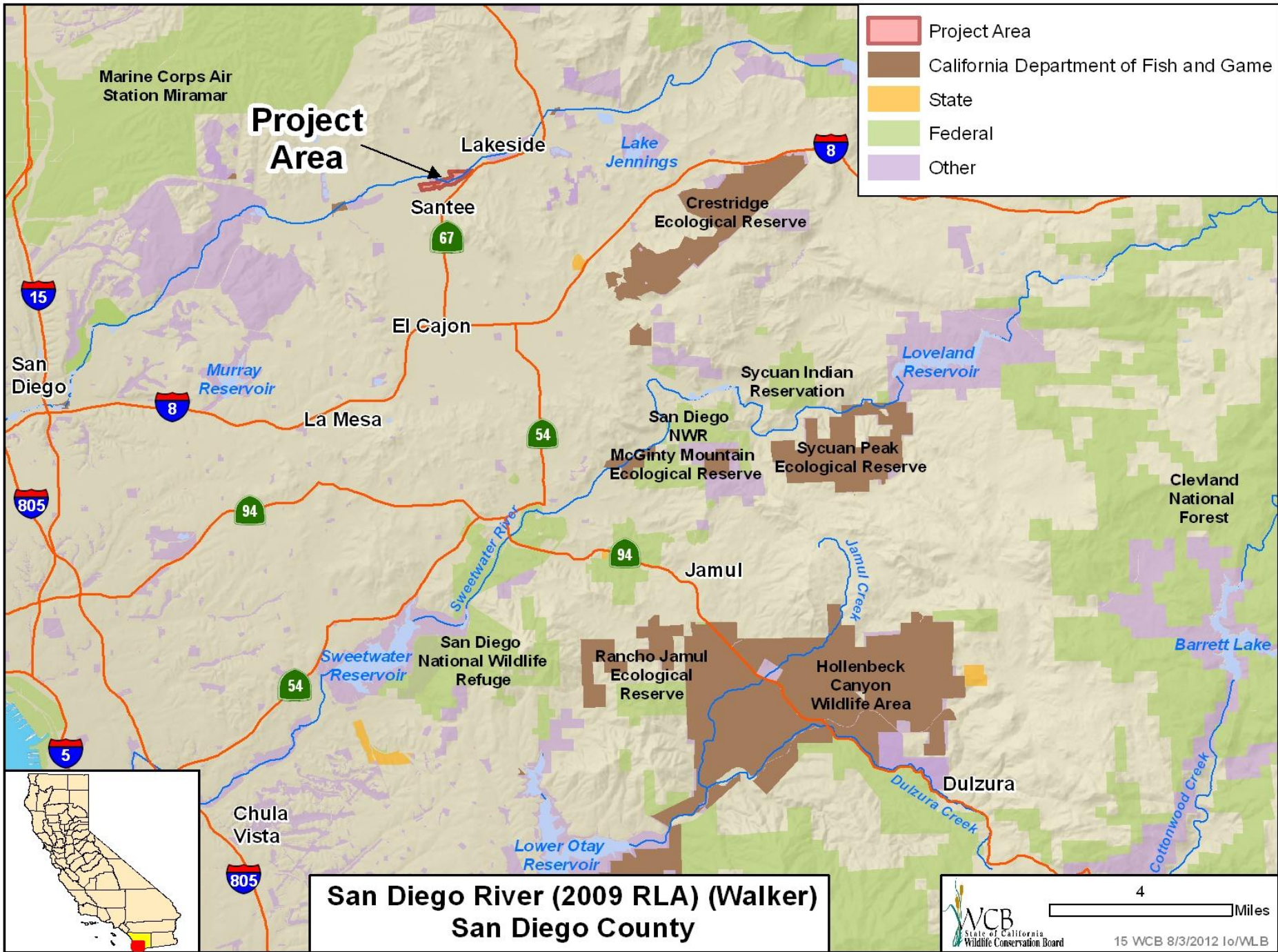


14. Jacumba Peak (Change of Scope)
San Diego County



14. Jacumba Peak (Change of Scope)
San Diego County





**San Diego River (2009 RLA) (Walker)
San Diego County**

15. San Diego River (2009 RLA) (Walker)
San Diego County

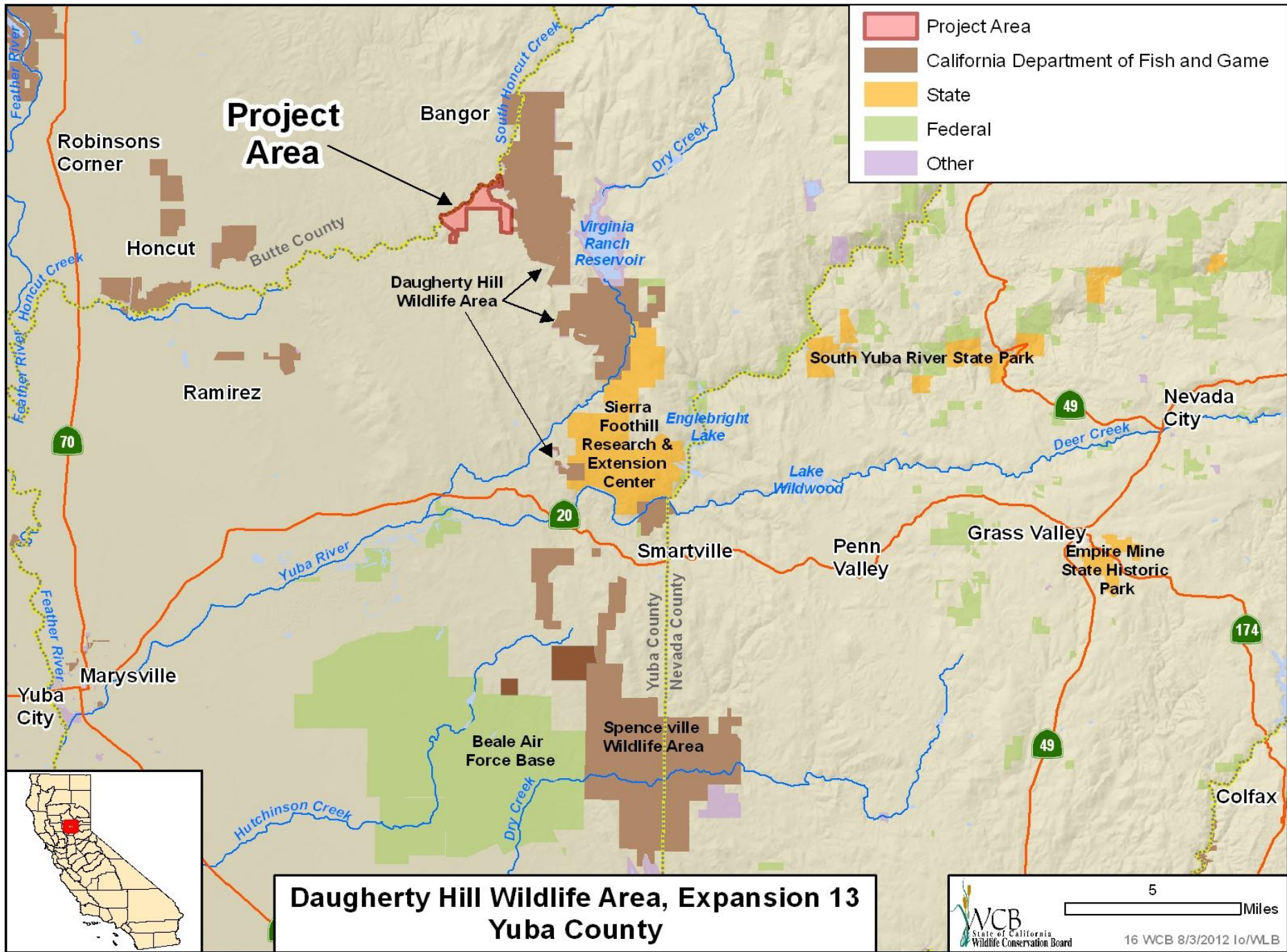


15. San Diego River (2009 RLA) (Walker)
San Diego County



15. San Diego River (2009 RLA) (Walker)
San Diego County





**Daugherty Hill Wildlife Area, Expansion 13
Yuba County**



16. Daugherty Hill Wildlife Area, Expansion 13
Yuba County



■ Honcut Creek

16. Daugherty Hill Wildlife Area, Expansion 13
Yuba County



- Rolling hills found on property

16. Daugherty Hill Wildlife Area, Expansion 13
Yuba County

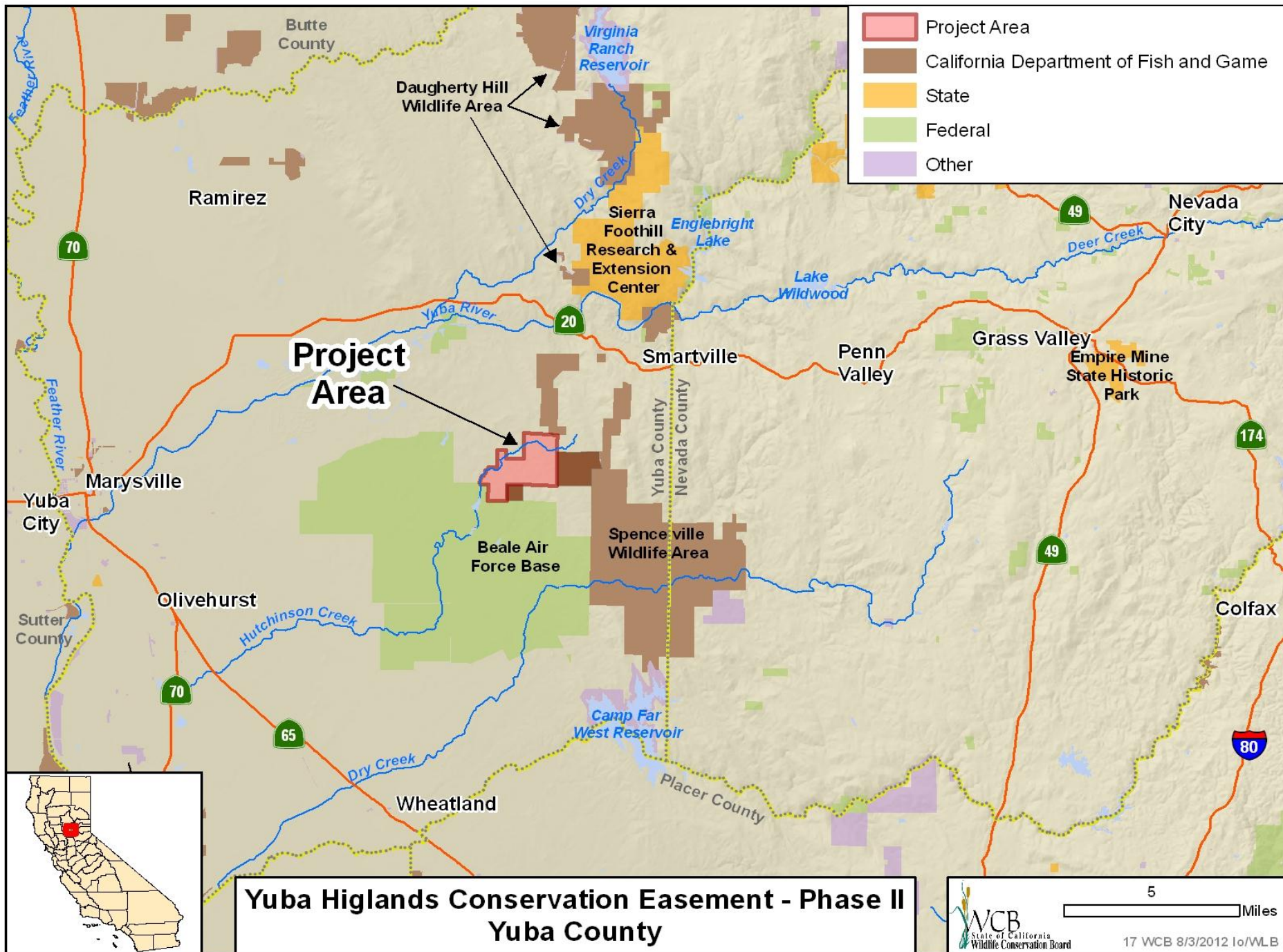


- Rock formation on property

16. Daugherty Hill Wildlife Area, Expansion 13
Yuba County



- Oaks found on property



17. Yuba Highlands Conservation Easement – Phase II Yuba County



Photo courtesy of Josh Cook

- Yuba Highlands property contains rolling grasslands interspersed with oak trees.

17. Yuba Highlands Conservation Easement – Phase II Yuba County



- The Conservation Easement will allow continued agricultural practices such as cattle grazing.

17. Yuba Highlands Conservation Easement – Phase II Yuba County



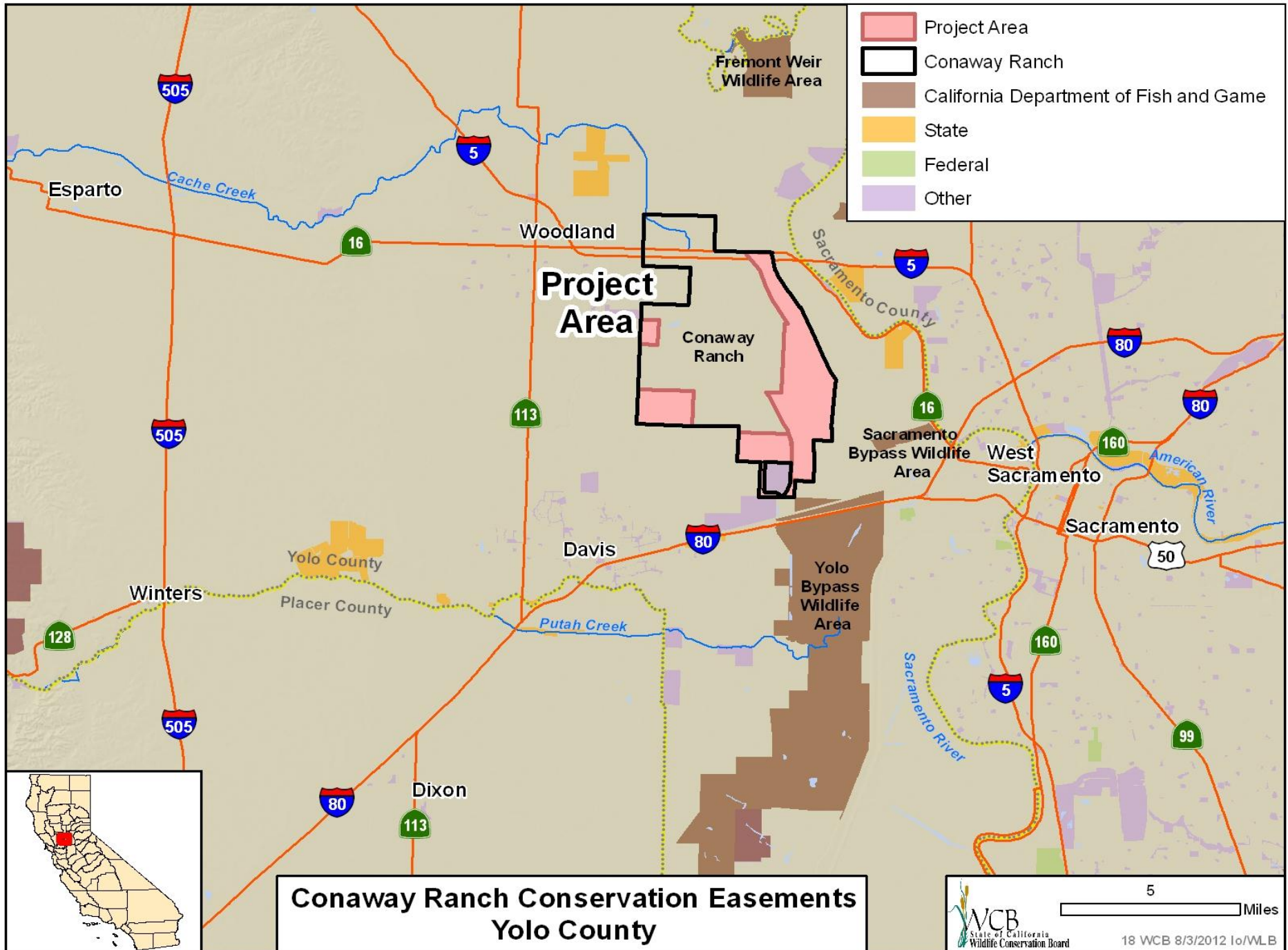
- View of the rolling grasslands interspersed with tree cover on the Yuba Highlands property

17. Yuba Highlands Conservation Easement – Phase II Yuba County



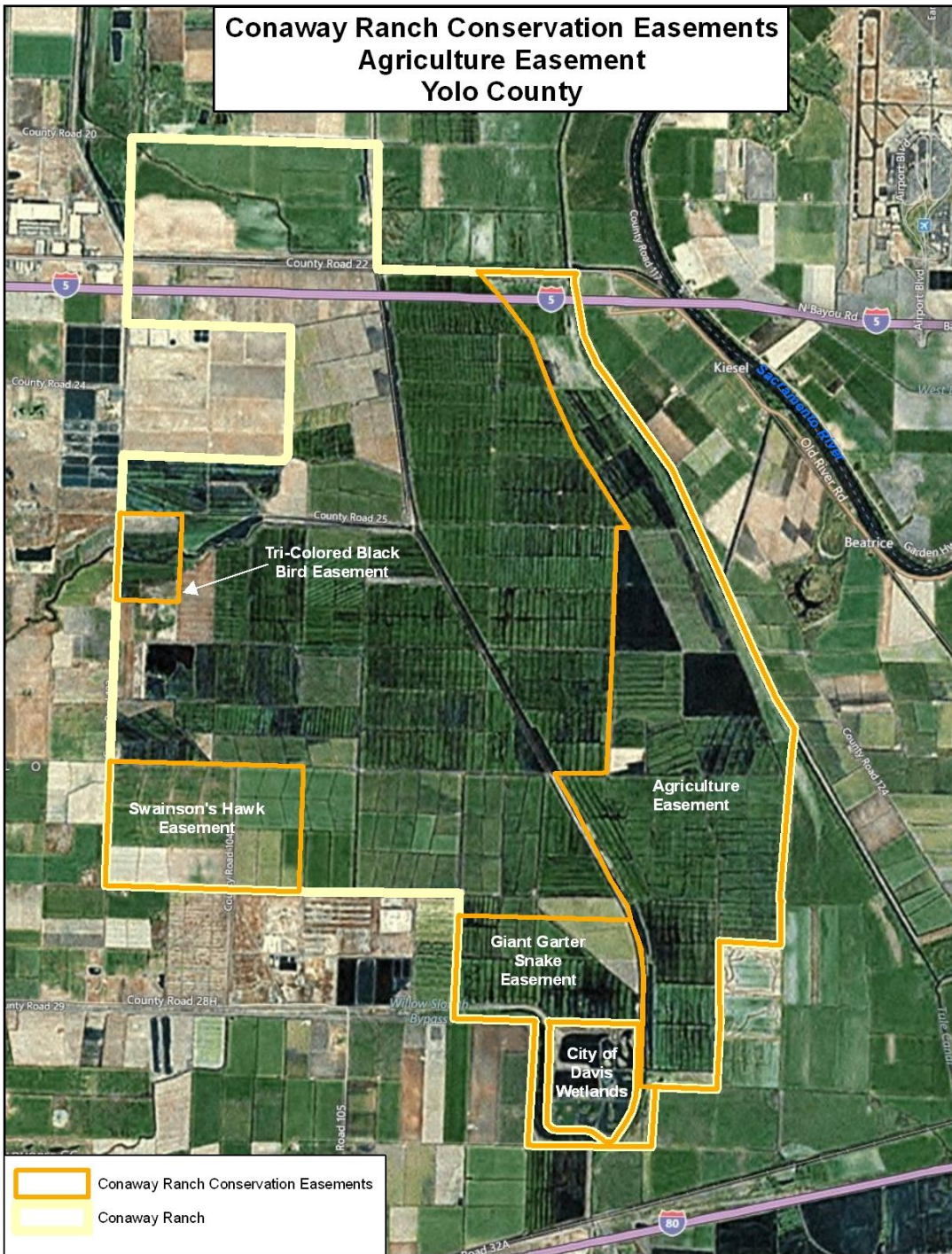
Photo Courtesy of Rich Reid

- Scenic view of Yuba Highlands II property



**Conaway Ranch Conservation Easements
Yolo County**

Conaway Ranch Conservation Easements Agriculture Easement Yolo County



**Conaway Ranch Conservation Easements
Giant Garter Snake Easement
Yolo County**



18. Conaway Ranch Conservation Easement Yolo County



- Southeast corner of the Giant Garter Snake Easement, next to Davis Wetlands

18. Conaway Ranch Conservation Easement Yolo County



- Giant Garter Snake Easement. Rice fields, canals, and ditches.

18. Conaway Ranch Conservation Easement
Yolo County



Conaway Ranch Conservation Easements Tri-Colored Black Bird Easement Yolo County



-  Tri-Colored Black Bird Easement
-  Conaway Ranch

18. Conaway Ranch Conservation Easement
Yolo County



18. Conaway Ranch Conservation Easement Yolo County



18. Conaway Ranch Conservation Easement Yolo County



- Tri-Colored Black Bird Easement. Southeastern Boundary. View northwest.

18. Conaway Ranch Conservation Easement
Yolo County



Conaway Ranch Conservation Easements Swainson's Hawk Easement Yolo County



18. Conaway Ranch Conservation Easement Yolo County



- Swainson's Hawk Easement. Southwestern boundary.

18. Conaway Ranch Conservation Easement Yolo County

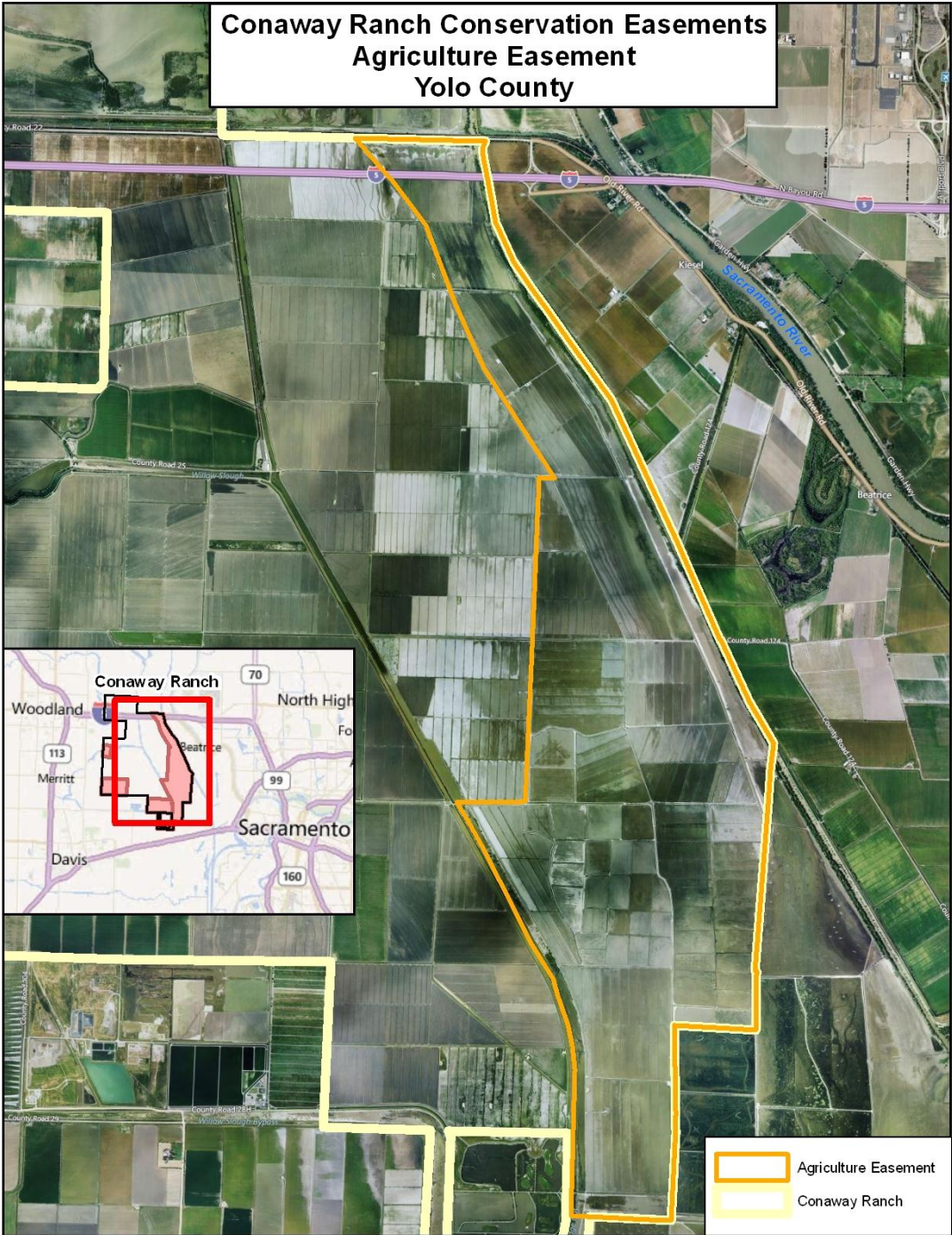


Photo by Maya Thompson Kepner

18. Conaway Ranch Conservation Easement
Yolo County



Conway Ranch Conservation Easements Agriculture Easement Yolo County



18. Conaway Ranch Conservation Easement Yolo County



18. Conaway Ranch Conservation Easement Yolo County



18. Conaway Ranch Conservation Easement Yolo County



- Waterfowl in the Agricultural Easement.

18. Conaway Ranch Conservation Easement Yolo County



■ Waterfowl in the Agricultural Easement.

18. Conaway Ranch Conservation Easement Yolo County

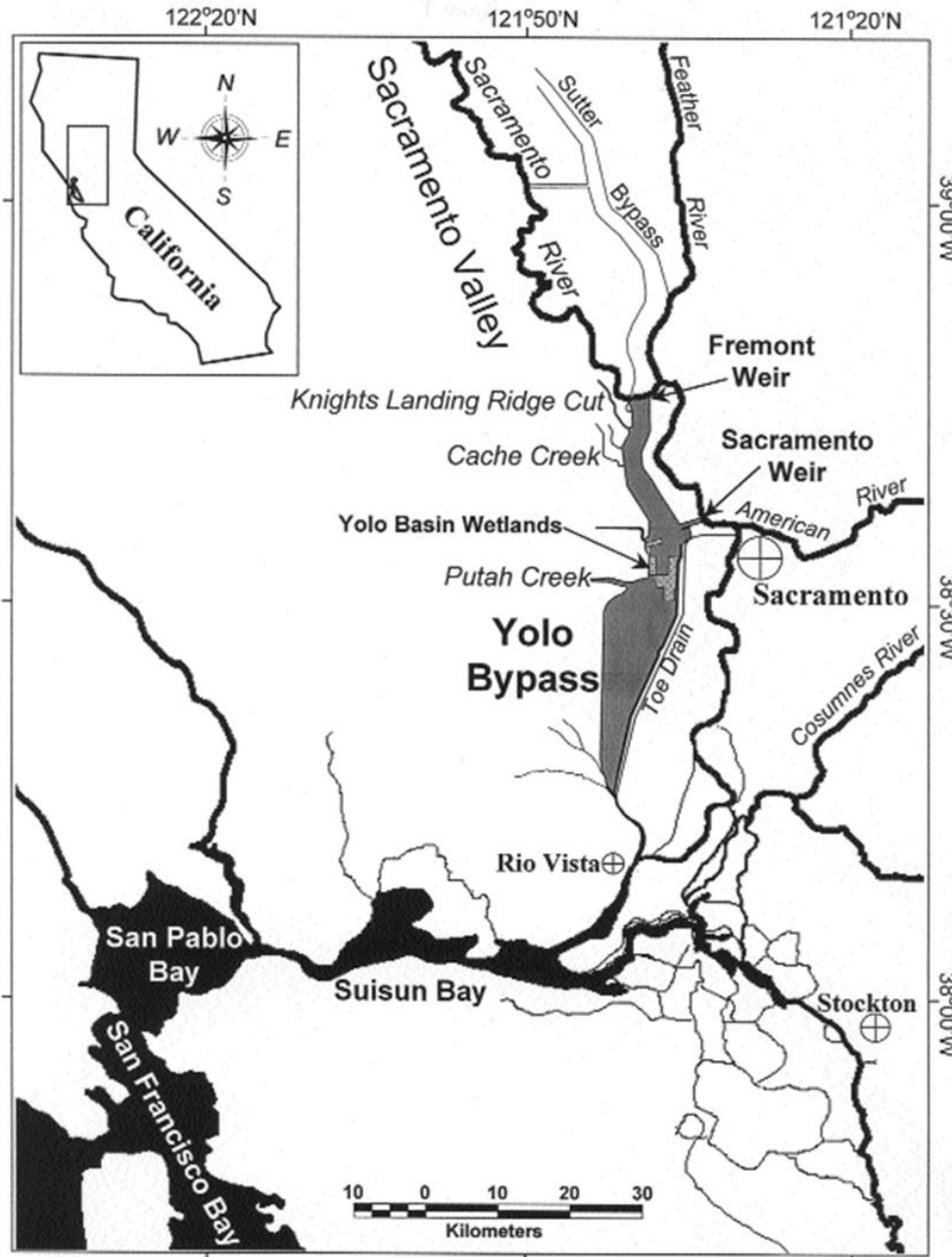


- Great blue heron in the Agricultural Easement.

18. Conaway Ranch Conservation Easement
Yolo County



- Sacramento splittail (*Pogonichthys macrolepidotus*)



- Map from Ted Sommer, et al., *California's Yolo Bypass: Evidence that flood control can be compatible with fisheries, wetlands, wildlife, and agriculture*. From *Fisheries* vol. 26, no. 8 www.fisheries.org

18. Conaway Ranch Conservation Easement Yolo County

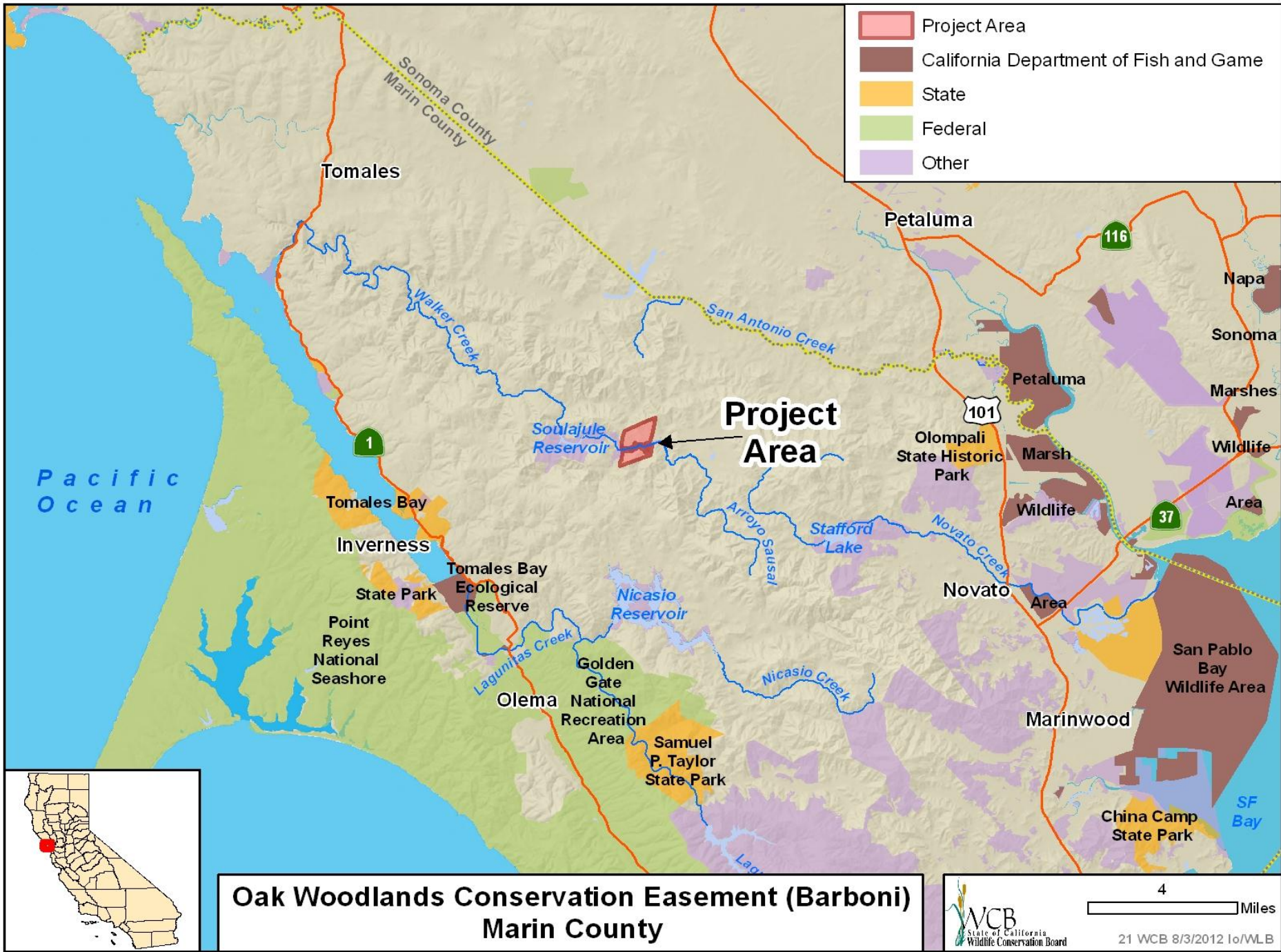


18. Conaway Ranch Conservation Easement Yolo County



18. Conaway Ranch Conservation Easement Yolo County





**Oak Woodlands Conservation Easement (Barboni)
Marin County**



4 Miles

21 WCB 8/3/2012 Io/WLB

21. Oak Woodlands Conservation Easement (Barboni) Marin County



- View of the Soulajule Reservoir on the property

21. Oak Woodlands Conservation Easement (Barboni) Marin County



- View of the many groves of trees of various varieties found on the property.

21. Oak Woodlands Conservation Easement (Barboni) Marin County

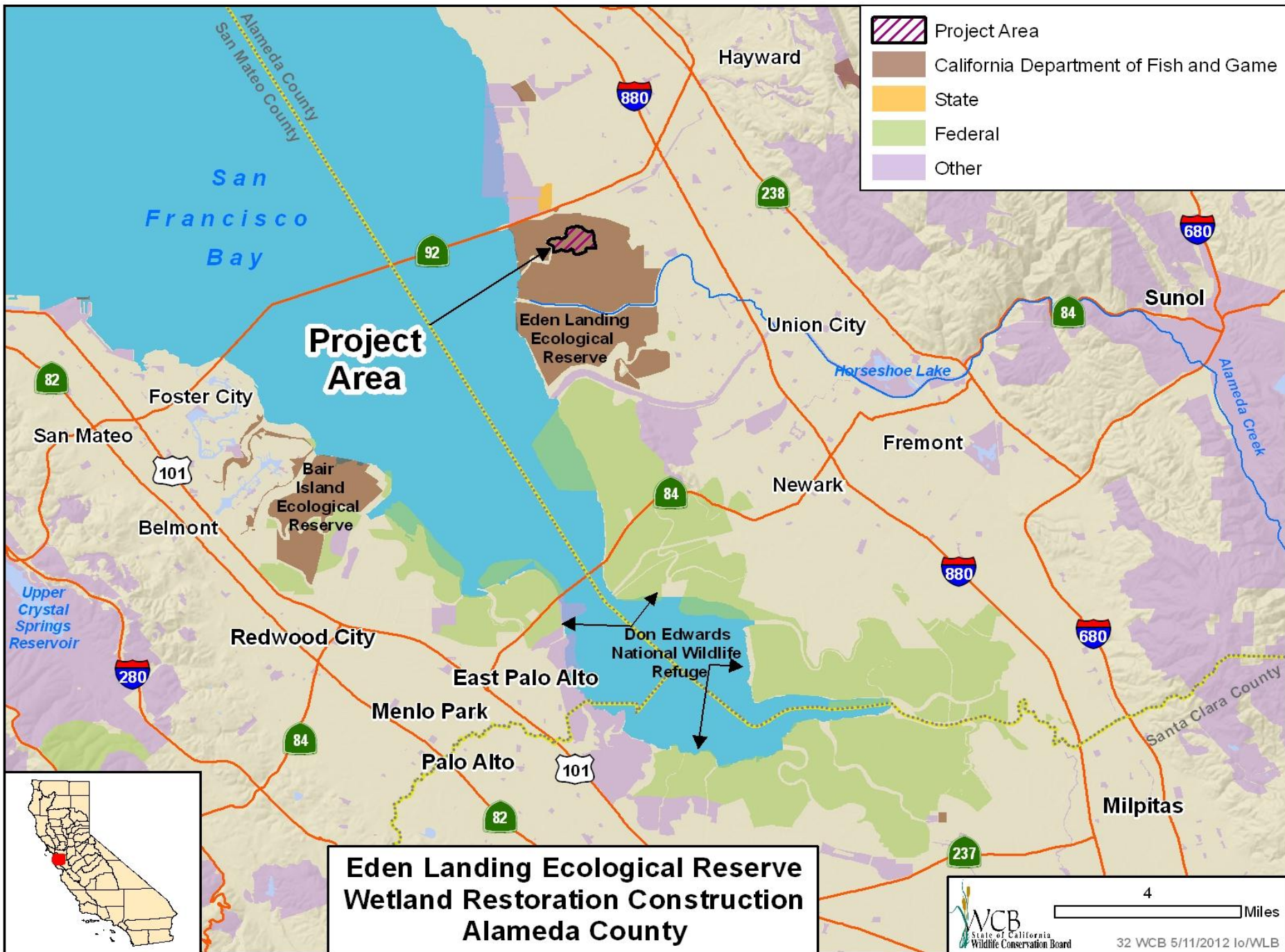


- Barboni Ranch organically-raised livestock.

21. Oak Woodlands Conservation Easement (Barboni) Marin County

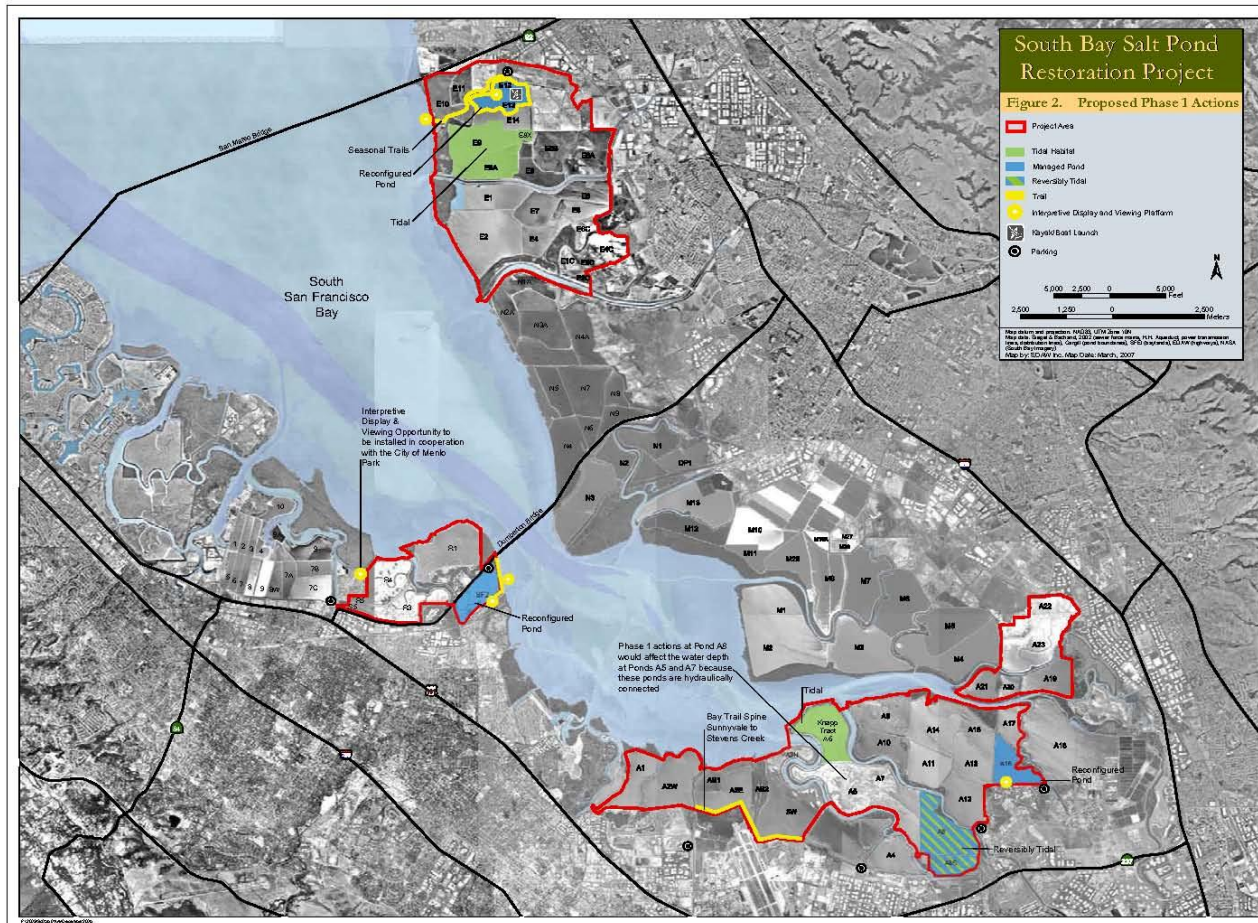


- Western Pond Turtles on the property.

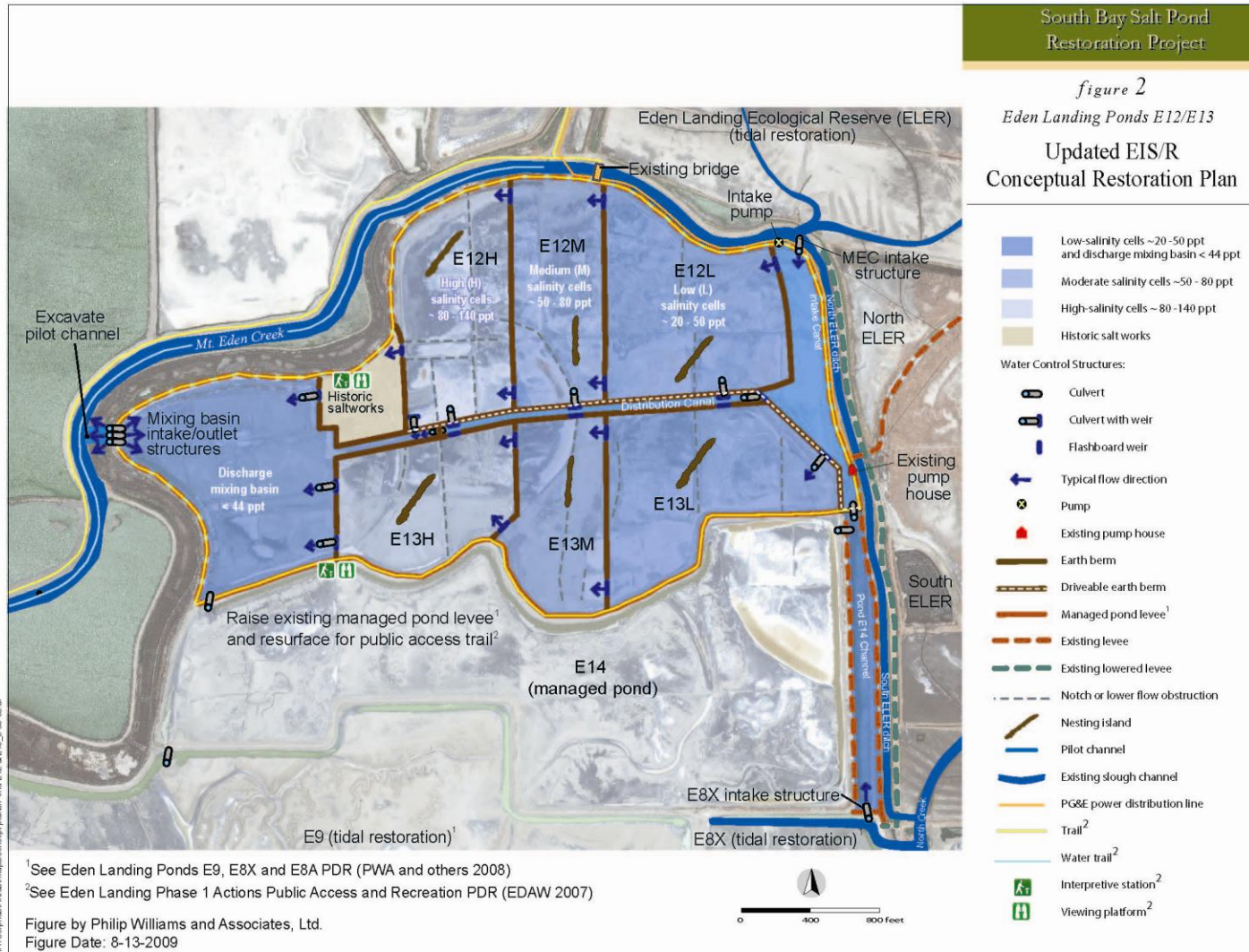


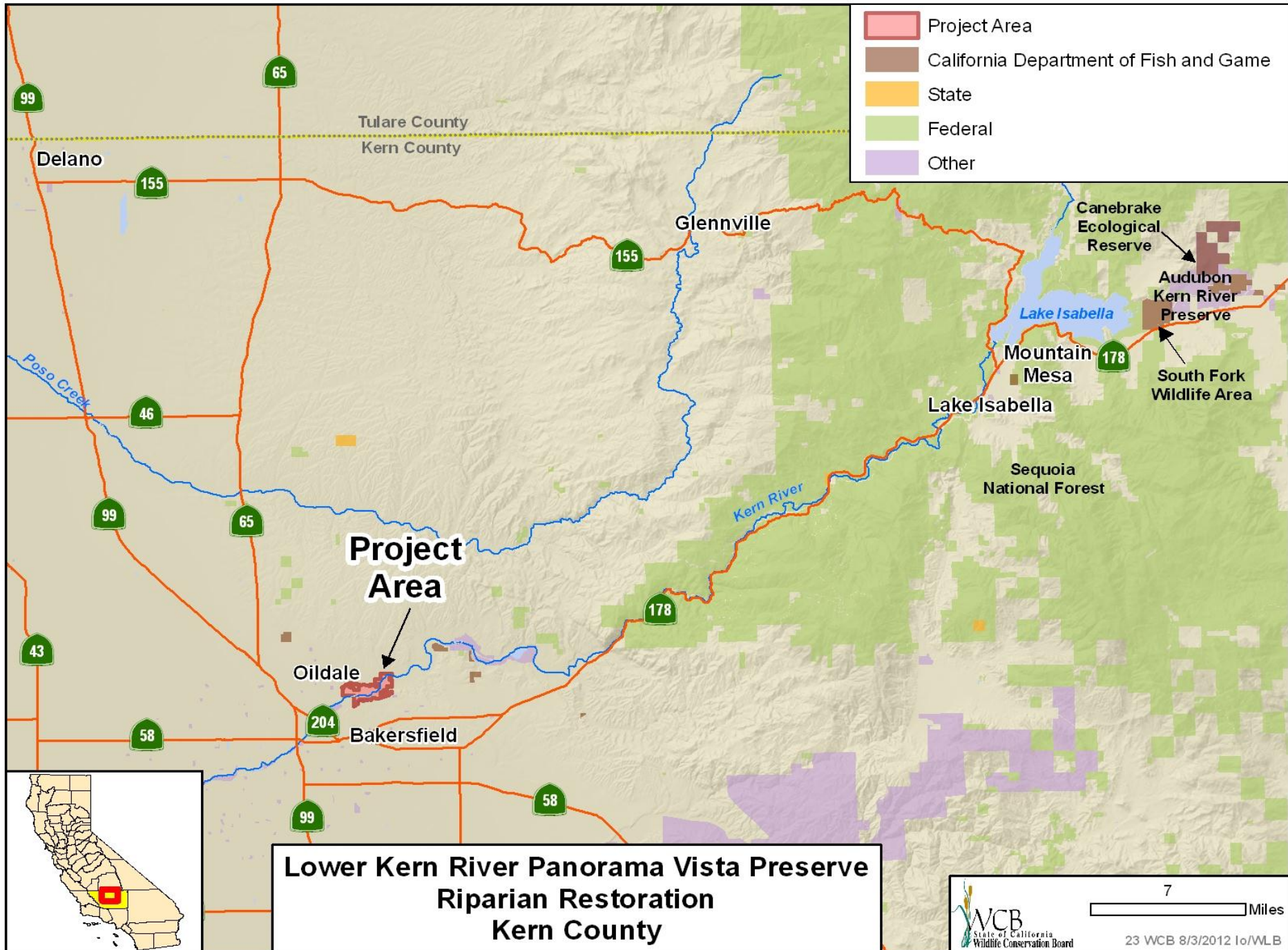
**Eden Landing Ecological Reserve
Wetland Restoration Construction
Alameda County**

22. Eden Landing Ecological Reserve Wetland Restoration Construction Alameda County

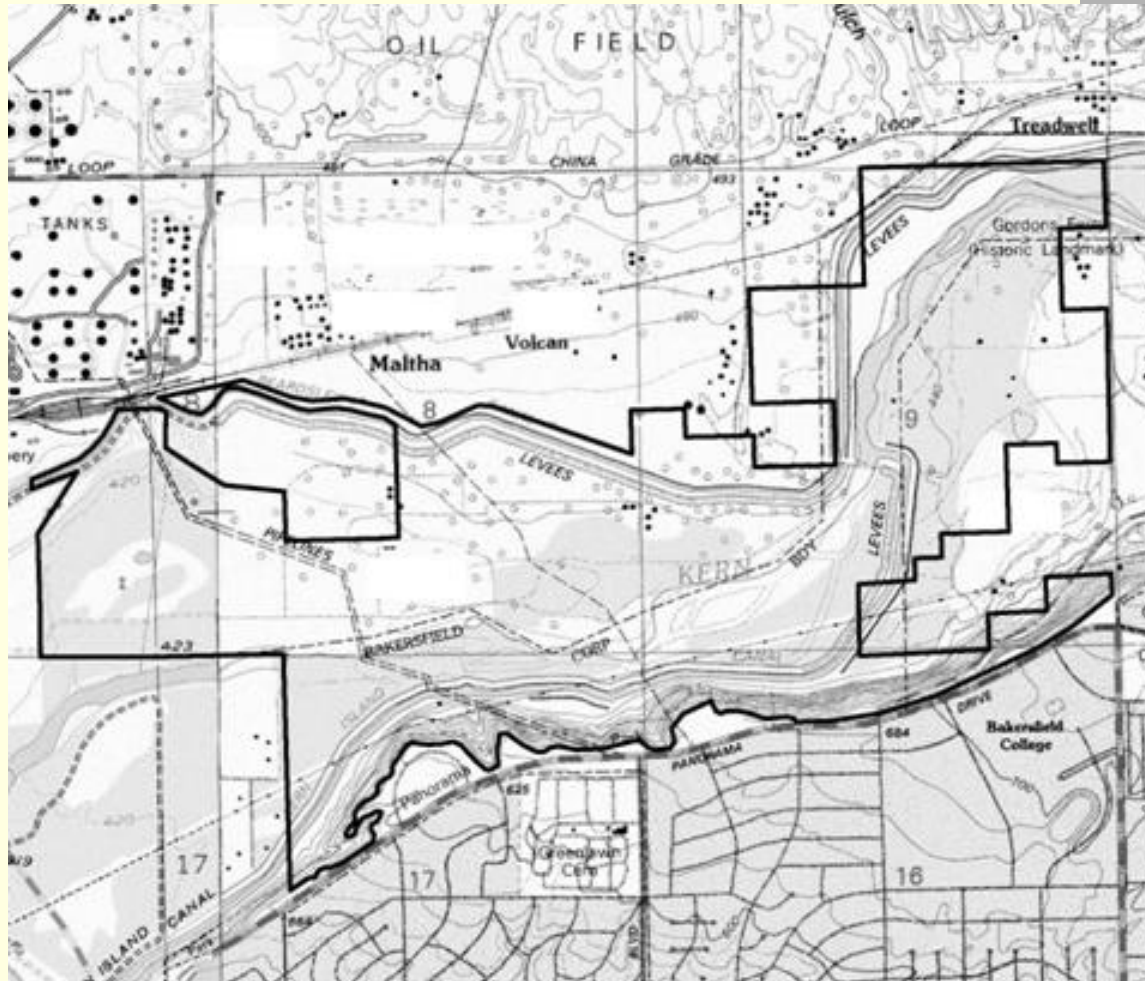


22. Eden Landing Ecological Reserve Wetland Restoration Construction Alameda County





23. Lower Kern River Panorama Vista Preserve Riparian Restoration Kern County



■ Panorama Vista Preserve Local Map

23. Lower Kern River Panorama Vista Preserve
Riparian Restoration
Kern County



- Aerial View of Panorama Preserve and Lower Kern River with Oilfields to the North.

23. Lower Kern River Panorama Vista Preserve
Riparian Restoration
Kern County



- Federally Listed Endangered Bakersfield Cactus.

23. Lower Kern River Panorama Vista Preserve
Riparian Restoration
Kern County



- Remnant Riparian Vegetation along Lower Kern River

23. Lower Kern River Panorama Vista Preserve
Riparian Restoration
Kern County



- Existing Fifty Acre Restoration Site at Panorama Vista Preserve.

23. Lower Kern River Panorama Vista Preserve
Riparian Restoration
Kern County



- Grasslands to be Restored to Riparian Forest.

23. Lower Kern River Panorama Vista Preserve
Riparian Restoration
Kern County

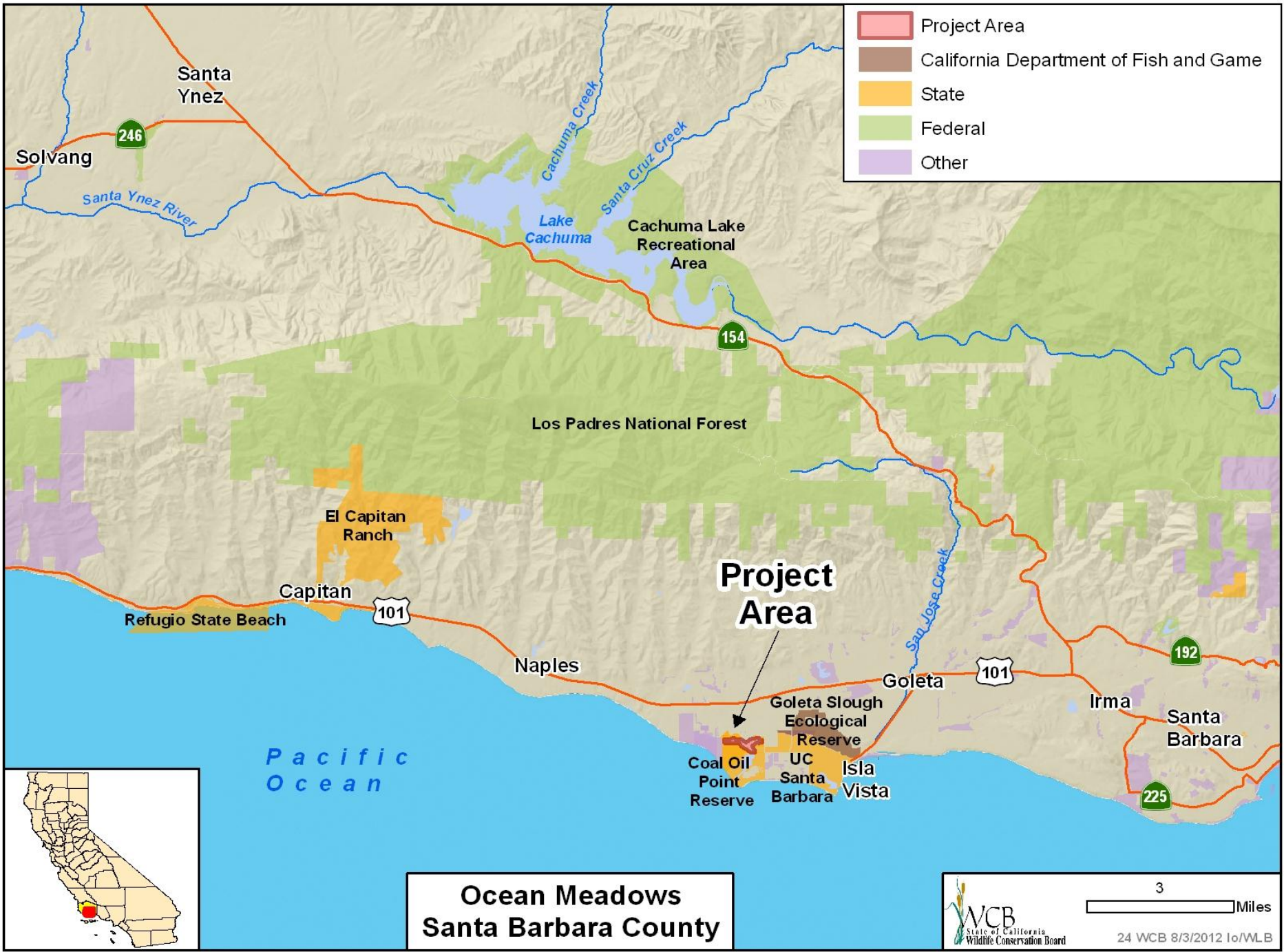


- Bluffs form the southern Boundary of the Preserve.

23. Lower Kern River Panorama Vista Preserve
Riparian Restoration
Kern County



- View of Panorama Vista Preserve from Bluffs.



**Ocean Meadows
Santa Barbara County**



3 Miles

24. Ocean Meadows
Santa Barbara County



Photos courtesy of Alex Size Trust for Public Land

24. Ocean Meadows Santa Barbara County

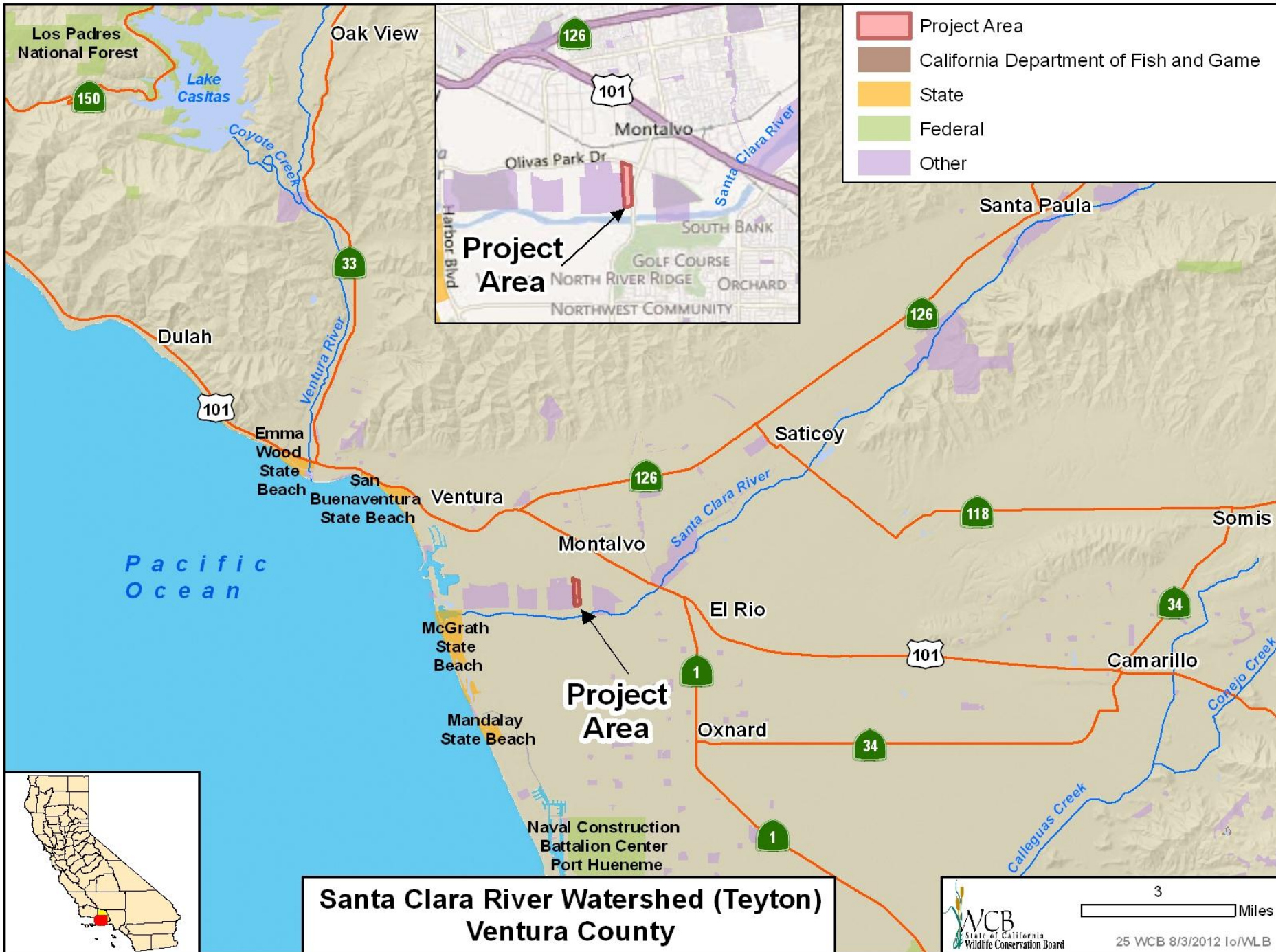


Photos courtesy of Alex Size Trust for Public Land

24. Ocean Meadows Santa Barbara County



Photos courtesy of Alex Size Trust for Public Land



**Santa Clara River Watershed (Teyton)
Ventura County**



3 Miles

25 WCB 8/3/2012 Io/WLB

25. Santa Clara River Watershed (Teyton)
Ventura County



- Southeasterly view of subject property

25. Santa Clara River Watershed (Teyton) Ventura County

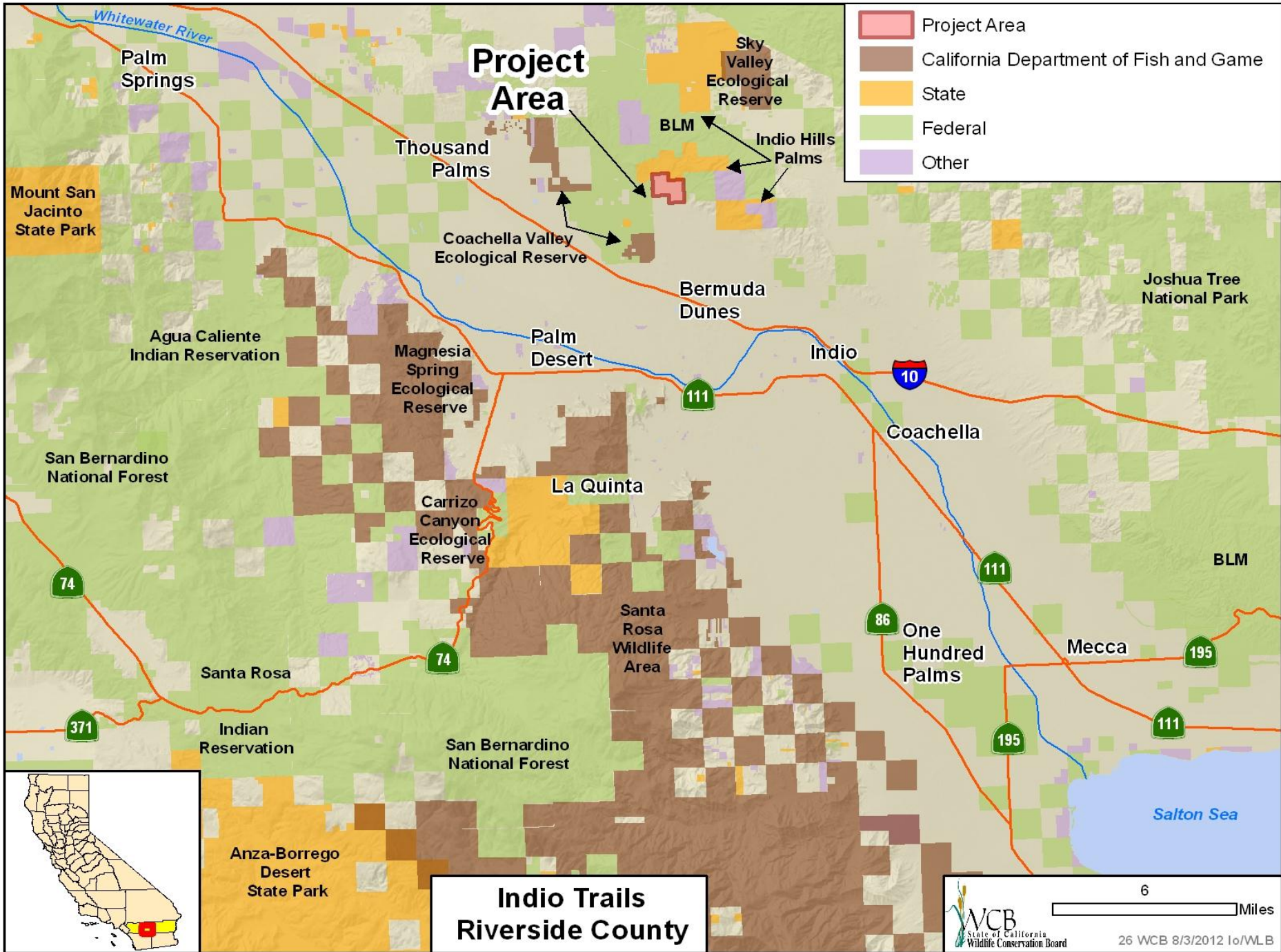


- Southerly portion of subject property viewed in an easterly direction

25. Santa Clara River Watershed (Teyton)
Ventura County



- Northerly view of subject property



26. Indio Trails
Riverside County



■ Mouth of Pushawalla Canyon

26. Indio Trails Riverside County

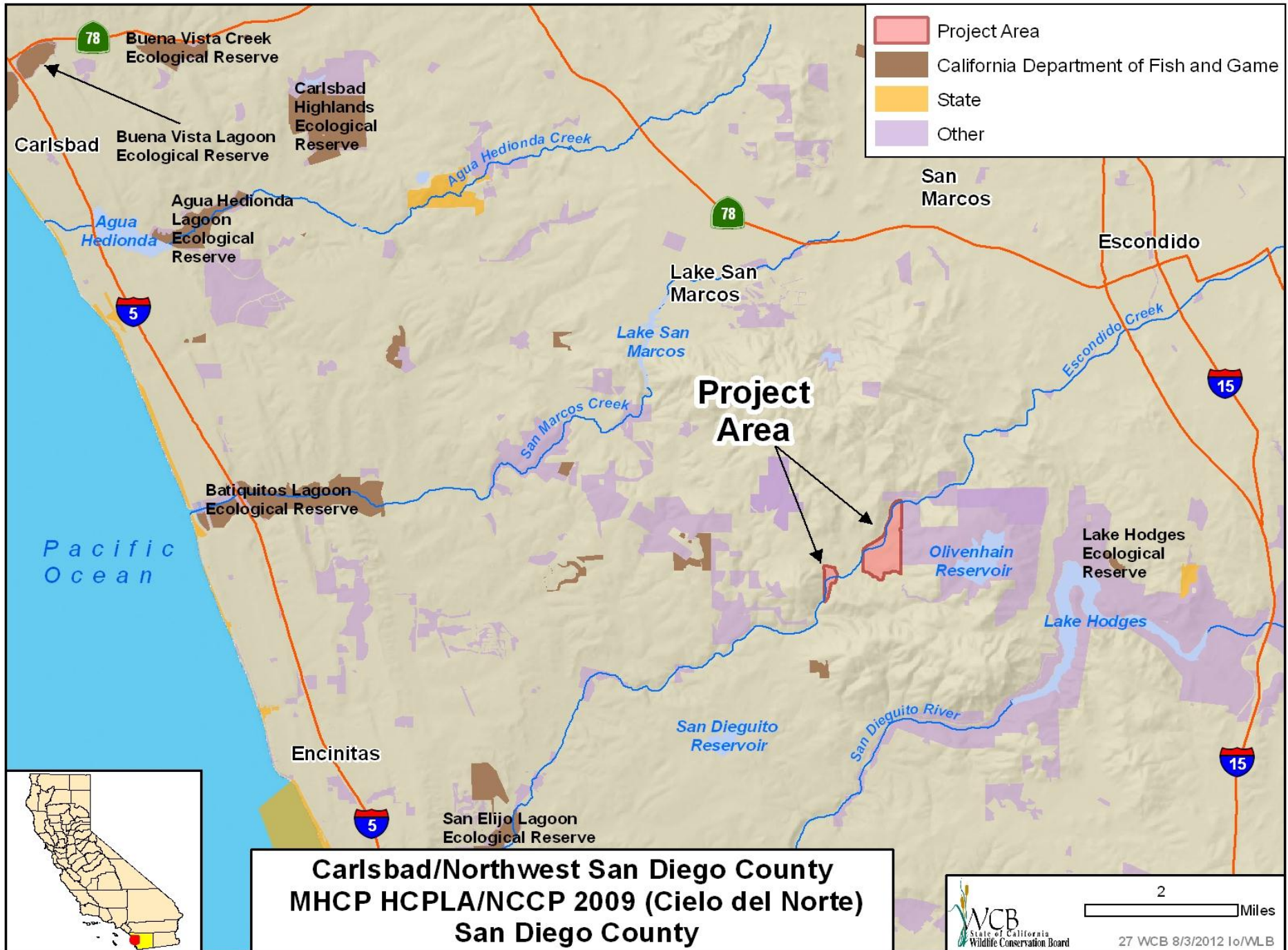


26. Indio Trails
Riverside County



26. Indio Trails
Riverside County





- Project Area
- California Department of Fish and Game
- State
- Other



**Carlsbad/Northwest San Diego County
MHCP HCPLA/NCCP 2009 (Cielo del Norte)
San Diego County**



WCB
State of California
Wildlife Conservation Board

2

Miles

27 WCB 8/3/2012 1o/WLB

27. Carlsbad/Northwest San Diego County
MHCP HCPLA/NCCCP 2009 (Cielo del Norte)
San Diego County

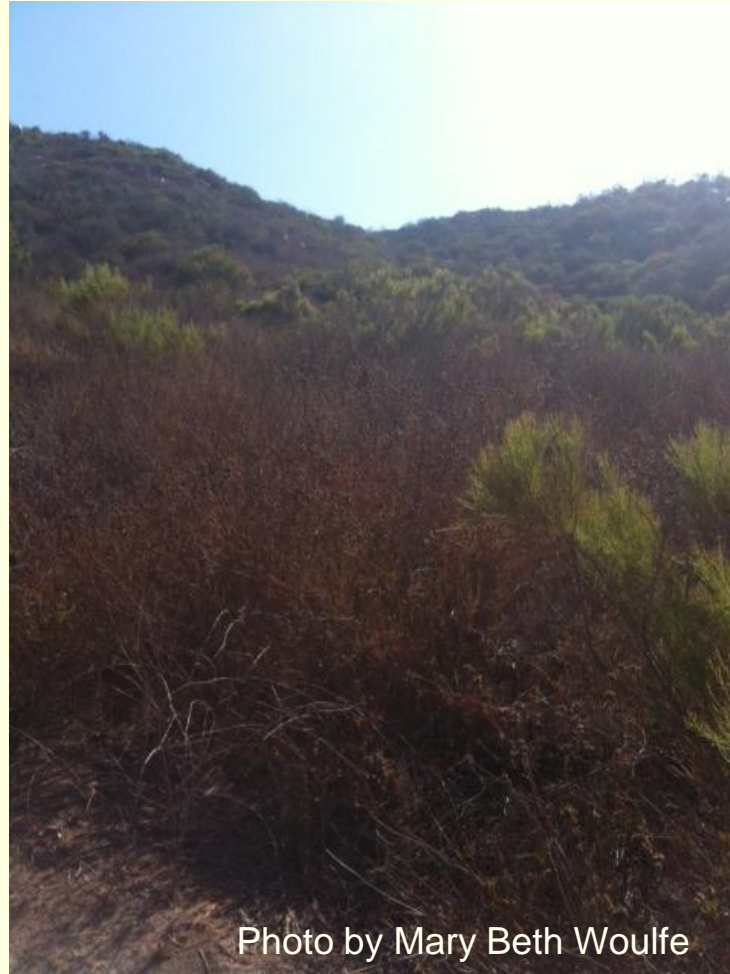


Photo by Mary Beth Woulfe

- Topography found on property

27. Carlsbad/Northwest San Diego County
MHCP HCPLA/NCCP 2009 (Cielo del Norte)
San Diego County



Photo by Mary Beth Woulfe

- Wildlife found on property

27. Carlsbad/Northwest San Diego County
MHCP HCPLA/NCCCP 2009 (Cielo del Norte)
San Diego County



Photo from The Conservation Fund

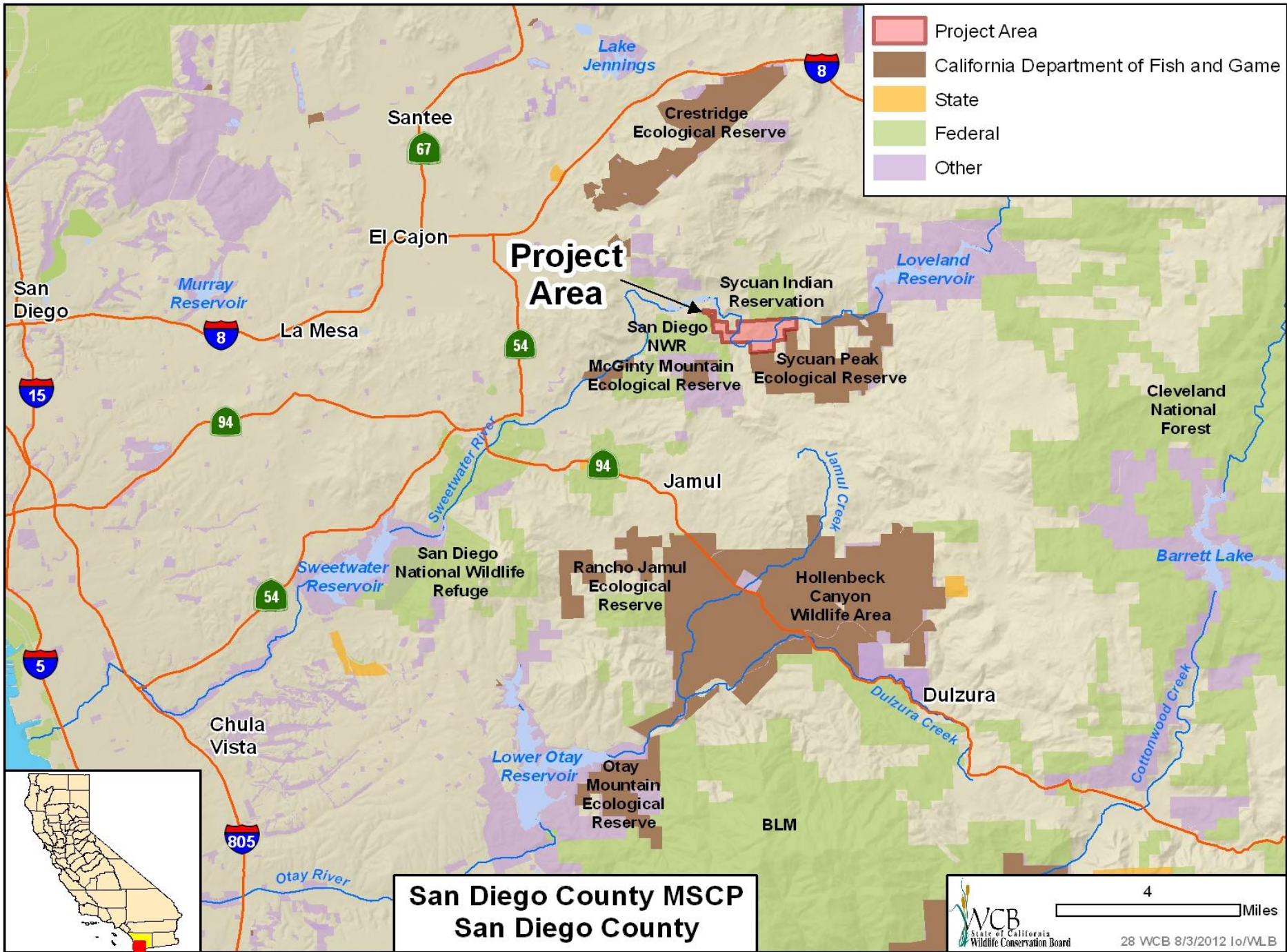
- Riparian habitat found on property

27. Carlsbad/Northwest San Diego County
MHCP HCPLA/NCCCP 2009 (Cielo del Norte)
San Diego County



Photo from The Conservation Fund

- Oaks found on property



28. San Diego County MSCP (2010)
(Sycuan Tribal – Sloan Canyon)
San Diego County



28. San Diego County MSCP (2010)
(Sycuan Tribal – Sloan Canyon)
San Diego County



28. San Diego County MSCP (2010)
(Sycuan Tribal – Sloan Canyon)
San Diego County



28. San Diego County MSCP (2010)
(Sycuan Tribal – Sloan Canyon)
San Diego County

