

## What are Marine Protected Areas?

Marine protected areas (MPAs) are marine or estuarine waters set aside primarily to protect or conserve marine life and its associated habitat. MPAs have varying levels of protection and allowed activities, with special regulations in addition to general fishing regulations.

## Types of MPAs

California uses three main MPA classifications: State Marine Reserve (SMR), State Marine Conservation Area (SMCA) and State Marine Park (SMP). The Northern California region also includes a State Marine Recreational Management Area (SMRMA) and special closures.

## Northern California MPAs

Major revisions and additions to Northern California MPAs went into effect on December 19, 2012. The region's 19 MPAs, one SMRMA and seven special closures now encompass approximately 137 square miles (13 percent) of state waters in the northern California region. Of those about 51 square miles are designated as "no-take" SMRs. Northern California MPAs are part of a network of MPAs that extends all along the California coastline.

## Fishing may be restricted, but what other activities are permitted in an MPA?

Unless specifically prohibited, non-consumptive activities such as diving, surfing, swimming, and boating are allowed within MPAs, as long as take restrictions are followed. General fishing regulations may be found online at [wildlife.ca.gov/Ocean-Sport-Regs](http://wildlife.ca.gov/Ocean-Sport-Regs). It's a good idea to review the regulations before visiting an MPA.

For more information, visit [wildlife.ca.gov/MPAs](http://wildlife.ca.gov/MPAs), email [AskMarine@wildlife.ca.gov](mailto:AskMarine@wildlife.ca.gov), or visit one of the following northern California CDFW offices:



Eureka  
619 2nd St.

Fort Bragg  
32330 N. Harbor Dr.

In 1999, California's Marine Life Protection Act was passed into law with a clear mandate: to re-evaluate all existing marine protected areas (MPAs) and potentially design new MPAs with input from a broad array of stakeholders. The California Department of Fish and Wildlife (CDFW) was integral to this effort. The MPAs in this brochure were designed, in part, to:

- Protect and sustain marine life, habitats and ecosystems
- Provide opportunities to learn from and enjoy marine areas subject to reduced human disturbance

For more information, visit the California Marine Protected Area website at

[wildlife.ca.gov/MPAs](http://wildlife.ca.gov/MPAs)

For general fishing regulations that are in effect in addition to MPA regulations, visit

[wildlife.ca.gov/Ocean-Sport-Regs](http://wildlife.ca.gov/Ocean-Sport-Regs)



Help stop poaching and polluting.  
Call CalTIP!  
1-888-334-CalTIP  
(1-888-334-2258)



Sustainable Fish and Wildlife Resources



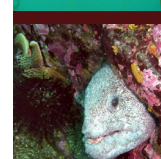
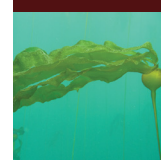
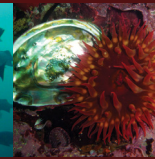
MPA Mobile Website

Alternate communication formats of this document are available upon request. If reasonable accommodation is needed, call CDFW at (916) 322-8911 / California Relay Service for the deaf or hearing-impaired from TDD phones: (800) 735-2929

# California Marine Protected Areas



## Northern California: California-Oregon Border to Alder Creek, near Pt. Arena



CDFW photos by K. Joe



College Cove, Trinidad  
photo by K. Singh

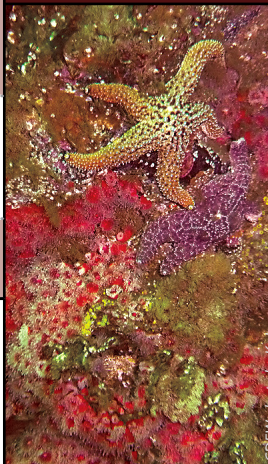


# Northern California Marine Protected Areas

Note: This document is provided as a courtesy, and does not replace the official laws and regulations found in the California Fish and Game Code or the California Code of Regulations Title 14

SMR	Northern California MPA Regulations Effective December 19, 2012	
	MPA Name	Permitted/Prohibited Activities
	Reading Rock, South Cape Mendocino, Mattole Canyon, Sea Lion Gulch, Ten Mile, Point Cabrillo	It is unlawful to injure, damage, take, or possess any living, geological, or cultural marine resource.
SMCA	It is unlawful to injure, damage, take, or possess any living, geological, or cultural marine resource, EXCEPT:	
	Pyramid Point	Recreational take of surf smelt by dip net or Hawaiian-type throw net is allowed. Includes take exemptions for some tribes <sup>1</sup>
	Point St. George Reef Offshore	Recreational and commercial take of salmon by trolling or troll fishing gear, and Dungeness crab by trap is allowed. Includes take exemptions for some tribes <sup>1</sup>
	Reading Rock Samoa	Recreational take of salmon by trolling, surf smelt by dip net or Hawaiian-type throw net, and Dungeness crab by trap, hoop net or hand is allowed. Commercial take of salmon with troll fishing gear, surf smelt by dip net, and Dungeness crab by trap is allowed. Includes take exemptions for some tribes <sup>1</sup>
	Big Flat Double Cone Rock	Recreational take of salmon by trolling and Dungeness crab by trap, hoop net or hand is allowed. Commercial take of salmon with troll fishing gear and Dungeness crab by trap is allowed. Includes take exemptions for some tribes <sup>1</sup>
	Ten Mile Beach	Recreational take of Dungeness crab by trap, hoop net or hand is allowed. Commercial take of Dungeness crab by trap is allowed. Includes take exemptions for some tribes <sup>1</sup>
	Ten Mile Estuary <sup>2</sup>	Take of waterfowl in accordance with general waterfowl hunting regulations is allowed. Includes take exemptions for some tribes <sup>1</sup>
	MacKerricher Russian Gulch Van Damme	Commercial and recreational take in accordance with current regulations is allowed. Commercial take of bull kelp and giant kelp is prohibited.
	Big River Estuary <sup>2</sup>	Recreational take of surfperch by hook-and-line from shore only, and Dungeness crab by hoop net or hand is allowed. Take of waterfowl in accordance with general waterfowl hunting regulations is allowed. Includes take exemptions for some tribes <sup>1</sup>
	Navarro River Estuary	Recreational take of salmonids by hook-and-line in accordance with salmonid regulations is allowed. Take of waterfowl in accordance with general waterfowl hunting regulations is allowed. Includes take exemptions for some tribes <sup>1</sup>
SMRMA	South Humboldt Bay	Take of waterfowl in accordance with general waterfowl hunting regulations is allowed. Includes take exemptions for some tribes <sup>1</sup>
Special Closure	Year Round: Southwest Seal Rock Castle Rock Sugarloaf Island	Except as permitted by federal law or emergency caused by hazardous weather, <b>no vessel shall be operated or anchored at any time</b> from the mean high tide line to a distance of 300 ft. seaward of the lower low tide line of any shoreline of the special closure area.
	Mar. 1-Aug. 31 Only: False Klamath Rock Steamboat Rock Vizcaino Rock	No person except employees of CDFW, USFWS, NOAA or USCG during performance of their official duties, or unless permission is granted by CDFW, shall enter the area.

MPA boundaries, maps, coordinates and allowed activities are available on your smartphone or other mobile or web-enabled device at [wildlife.ca.gov/](http://wildlife.ca.gov/) [OceanSportfishMap](http://OceanSportfishMap) This information is also available on the CDFW website at [wildlife.ca.gov/MPAs](http://wildlife.ca.gov/MPAs) and through your local CDFW office.



SMCA= State Marine Conservation Area  
SMR= State Marine Reserve  
SMRMA= State Marine Recreational Management Area

Northern California Region MPAs Effective December 19, 2012

<sup>1</sup> Certain federally recognized tribes are exempted from the area and take regulations for this MPA. For information regarding tribal take, please see California Code of Regulations Title 14, Section 632(a)(11).  
<sup>2</sup> This area allows take associated with operation and maintenance of artificial structures regulated by other agencies pursuant to any required federal, state and local permits, or as otherwise authorized by CDFW.