

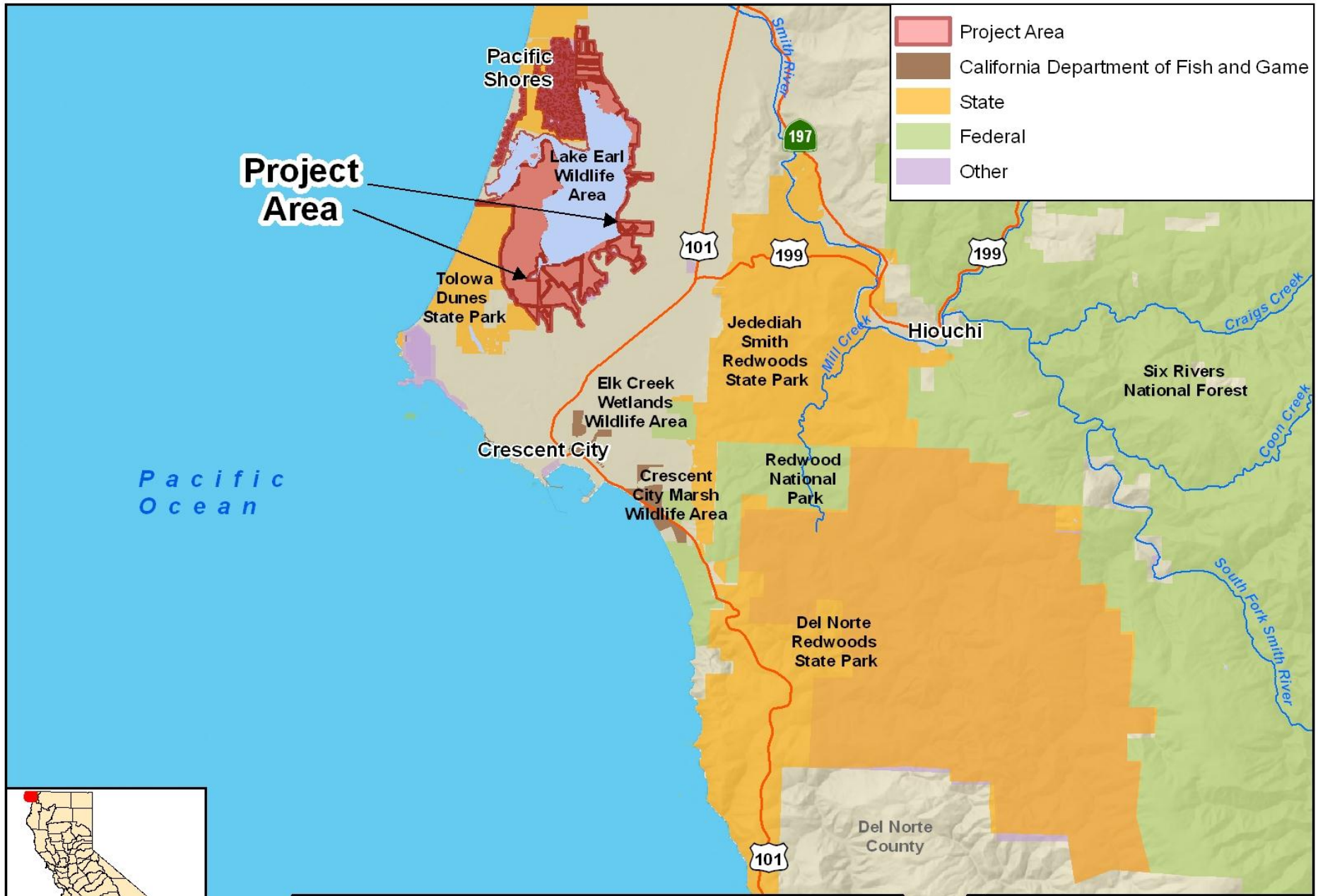


**November 29, 2012**  
**Wildlife Conservation Board Meeting**  
**10:00 AM, State Capitol, Room 112**  
**Sacramento, California 95814**

Joshua Tree San Bernardino County  
Photo Courtesy of Mohave Desert Land Trust

**Project Area**

- Project Area
- California Department of Fish and Game
- State
- Federal
- Other



**Lake Earl Wildlife Area Trail Improvements  
Del Norte County**

3 Miles

WCB  
State of California  
Wildlife Conservation Board

6 WCB 11/29/2012 Io/WLB

## #6. Lake Earl Wildlife Area Trail Improvements Del Norte County

---

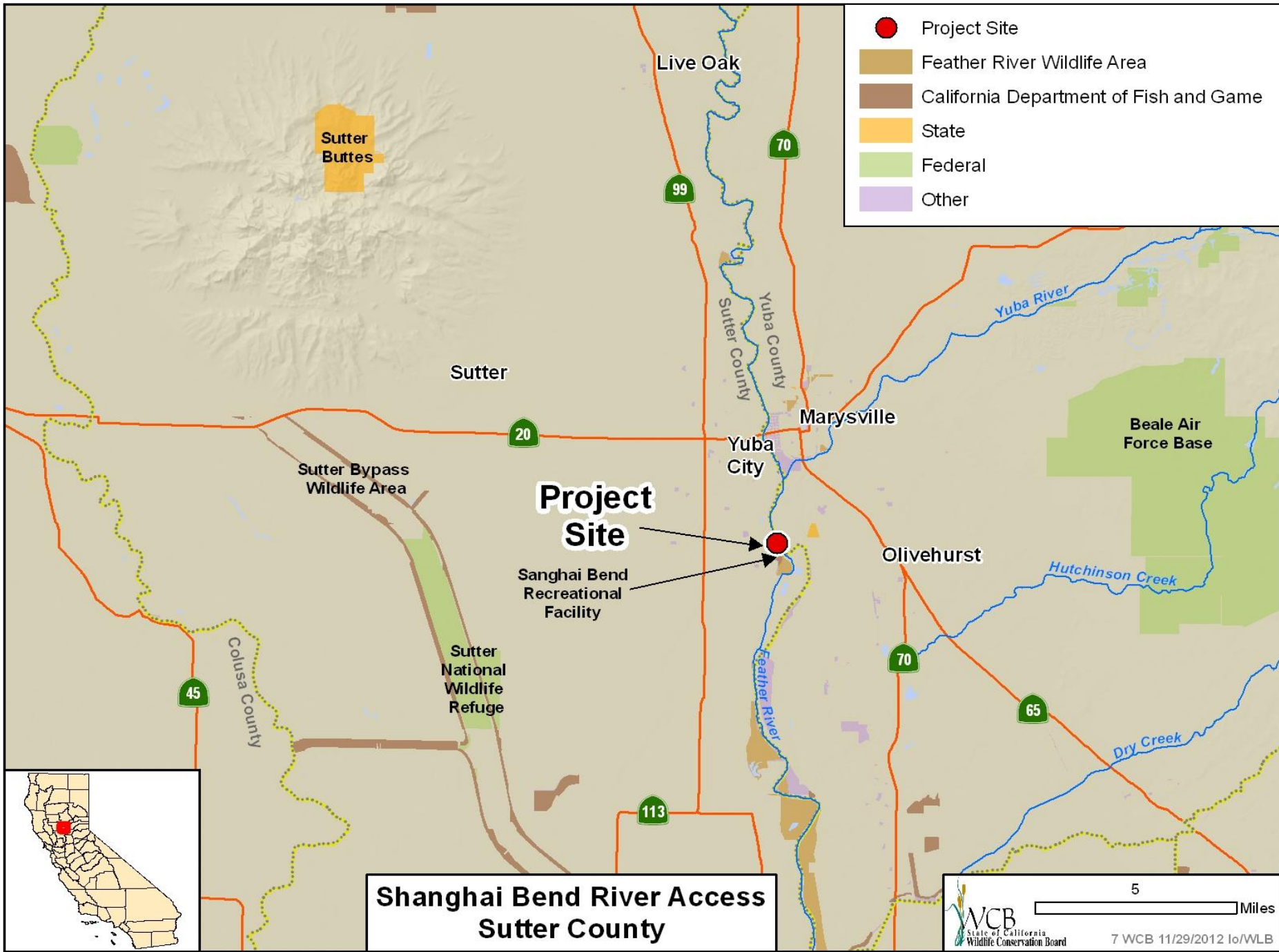


- Signs and Kiosks at the wildlife area are in need of replacement

## #6. Lake Earl Wildlife Area Trail Improvements Del Norte County



- Signs and Kiosks at the wildlife area are in need of replacement



## #7. Shanghai Bend River Access Sutter County

---



- View of Property from levee looking east. Dirt trail is approximate border of Shanghai Bend Recreational Facility

## #7. Shanghai Bend River Access Sutter County

---



- Property looking north

## #7. Shanghai Bend River Access Sutter County

---



- Riverbank of property looking north from Shanghai Bend Recreational Facility



## #7. Shanghai Bend River Access Sutter County

---



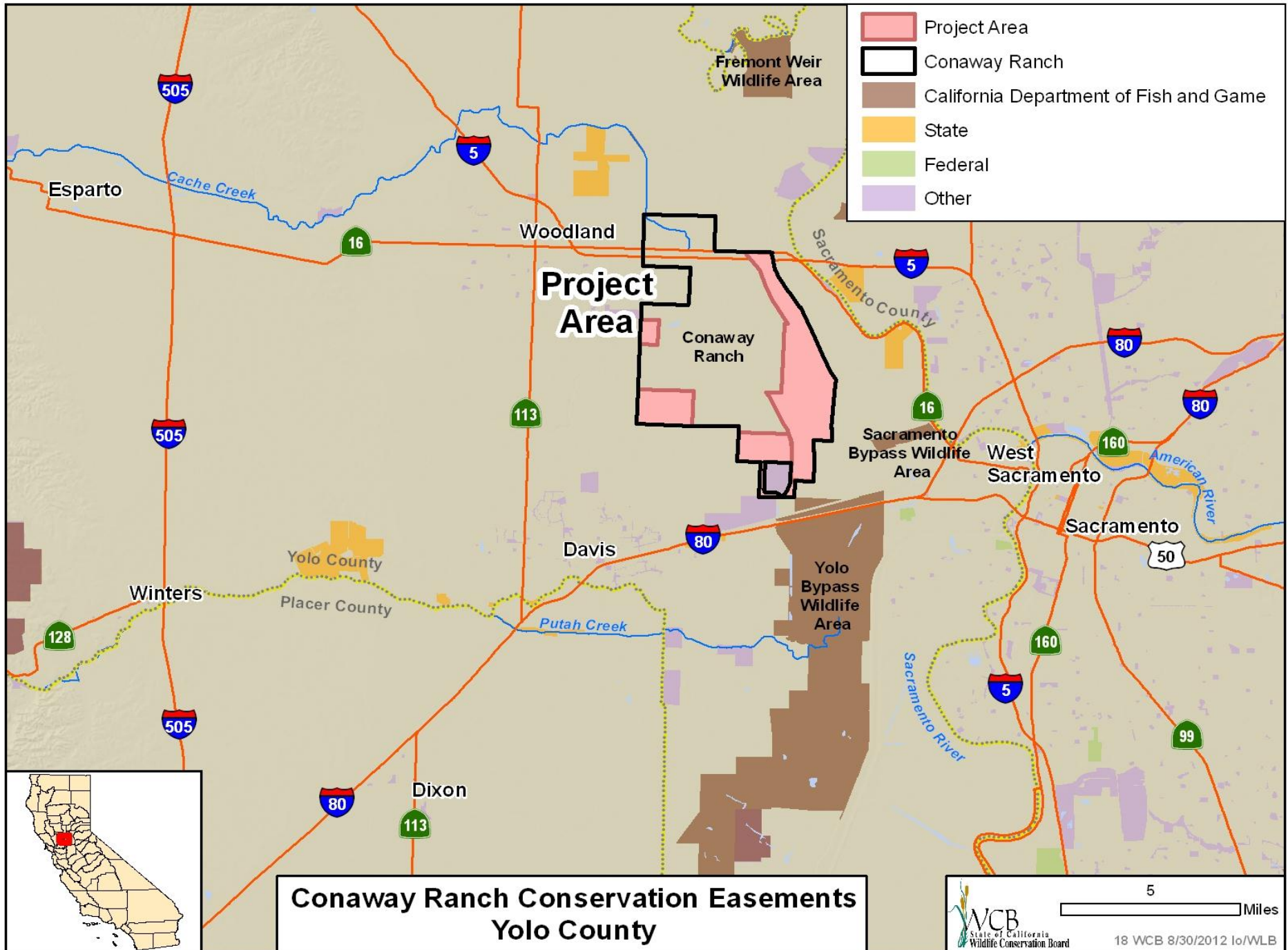
- Riverbank looking south from northern border of property

## #7. Shanghai Bend River Access Sutter County

---

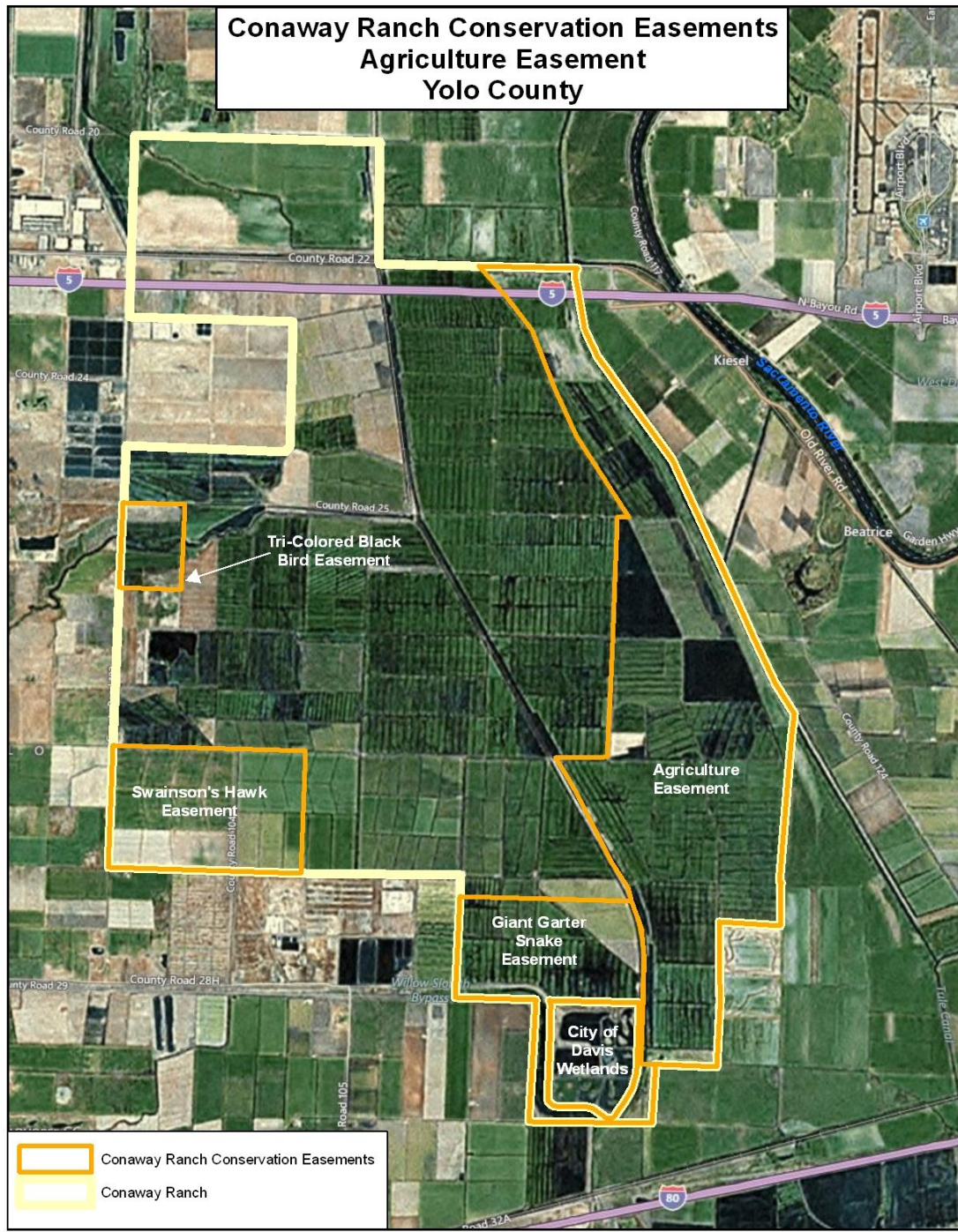


- Border of property and Shanghai Bend Recreational Facility

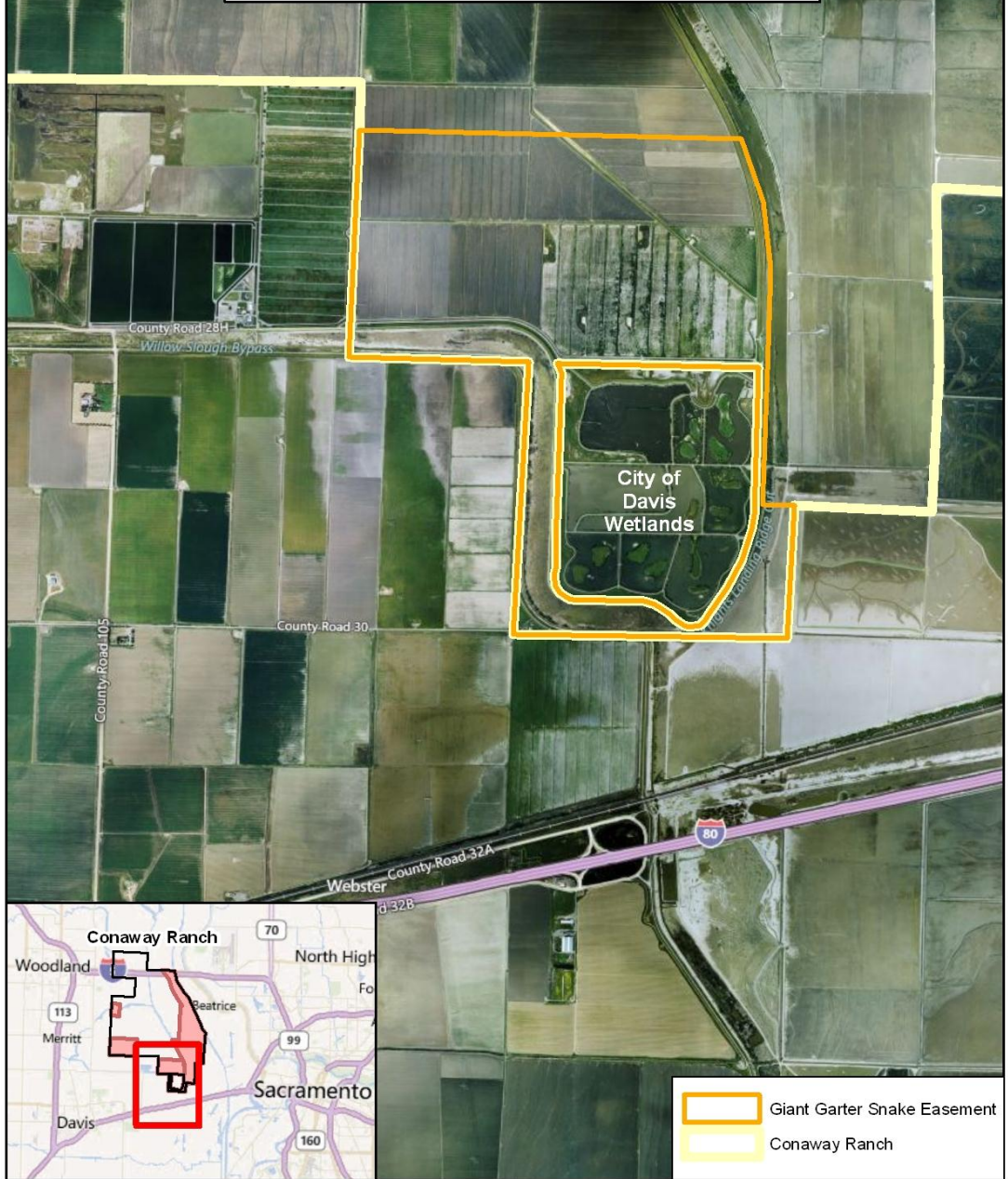


**Conaway Ranch Conservation Easements  
Yolo County**

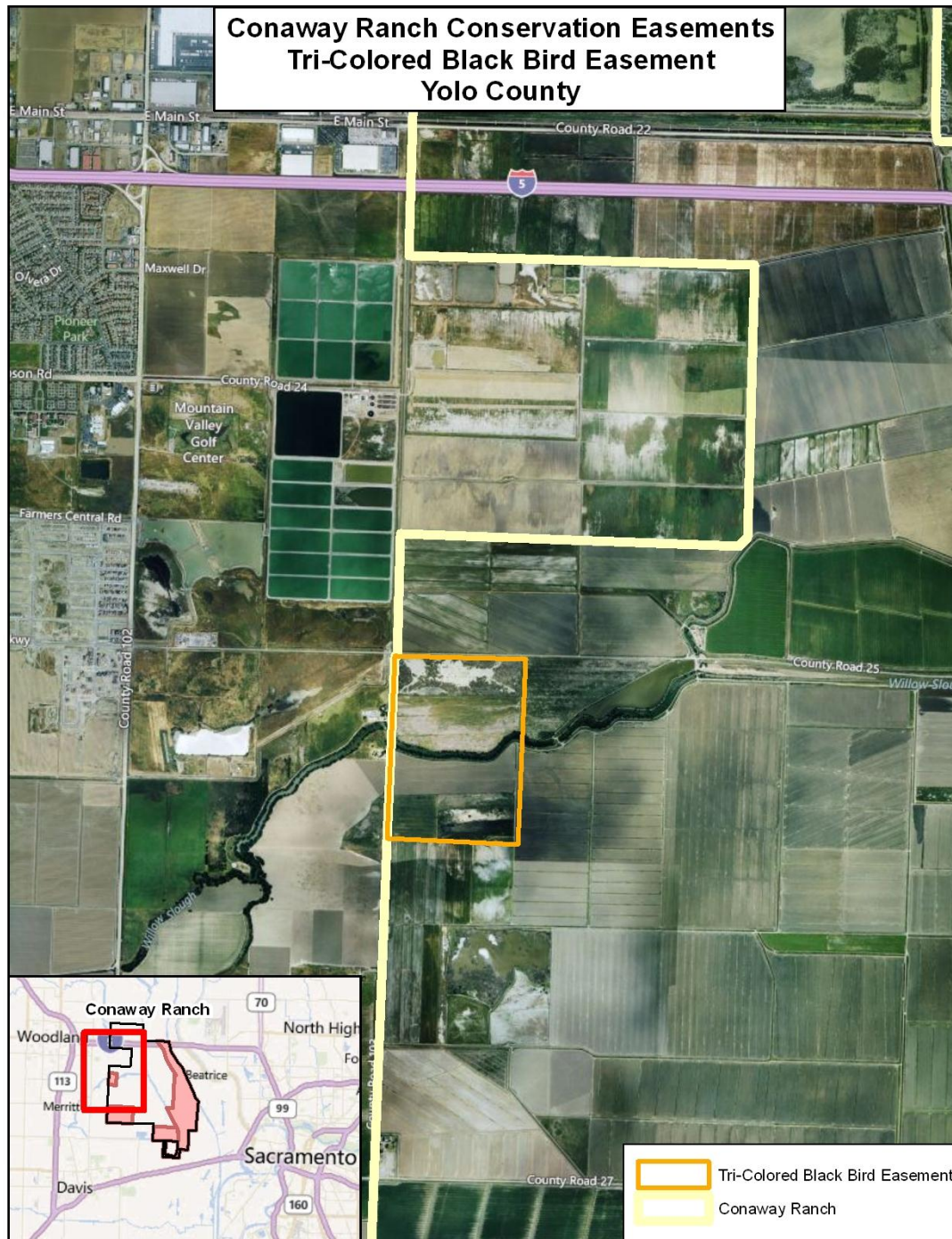
# Conaway Ranch Conservation Easements Agriculture Easement Yolo County



# Conaway Ranch Conservation Easements Giant Garter Snake Easement Yolo County



# Conaway Ranch Conservation Easements Tri-Colored Black Bird Easement Yolo County

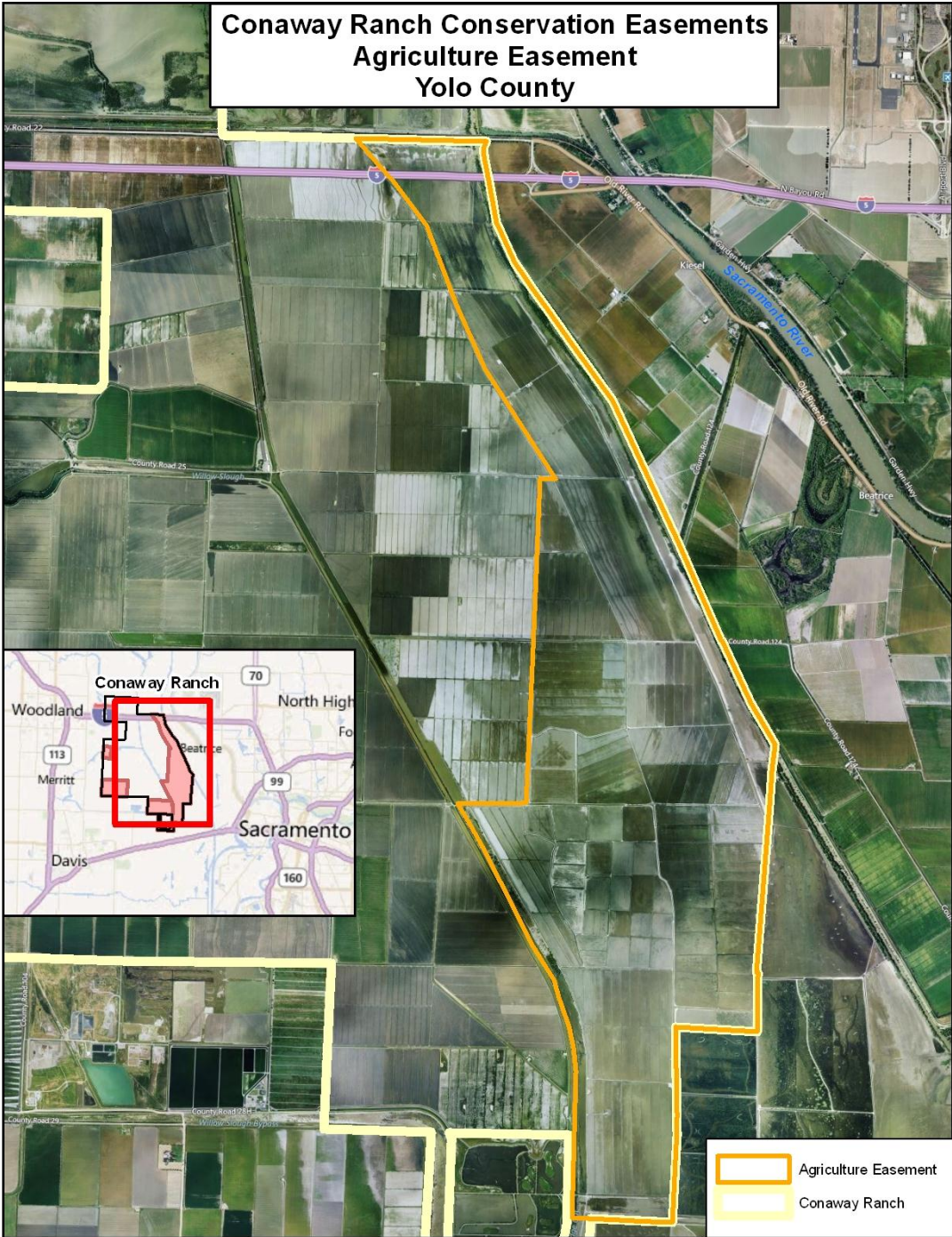


 Tri-Colored Black Bird Easement  
 Conaway Ranch

# Conaway Ranch Conservation Easements Swainson's Hawk Easement Yolo County



# Conway Ranch Conservation Easements Agriculture Easement Yolo County





## 8. Conaway Ranch Conservation Easement Yolo County

---



## 8. Conaway Ranch Conservation Easement Yolo County

### Valuation

#### **AG Easement**

Before 4,000 acres @ \$4,750/acre	\$19,000,000
After 4,000 acres @ \$3,500/acre	<u>14,000,000</u>
Reduction of Value	\$ 5,000,000

#### **Swainson's Hawk Easement**

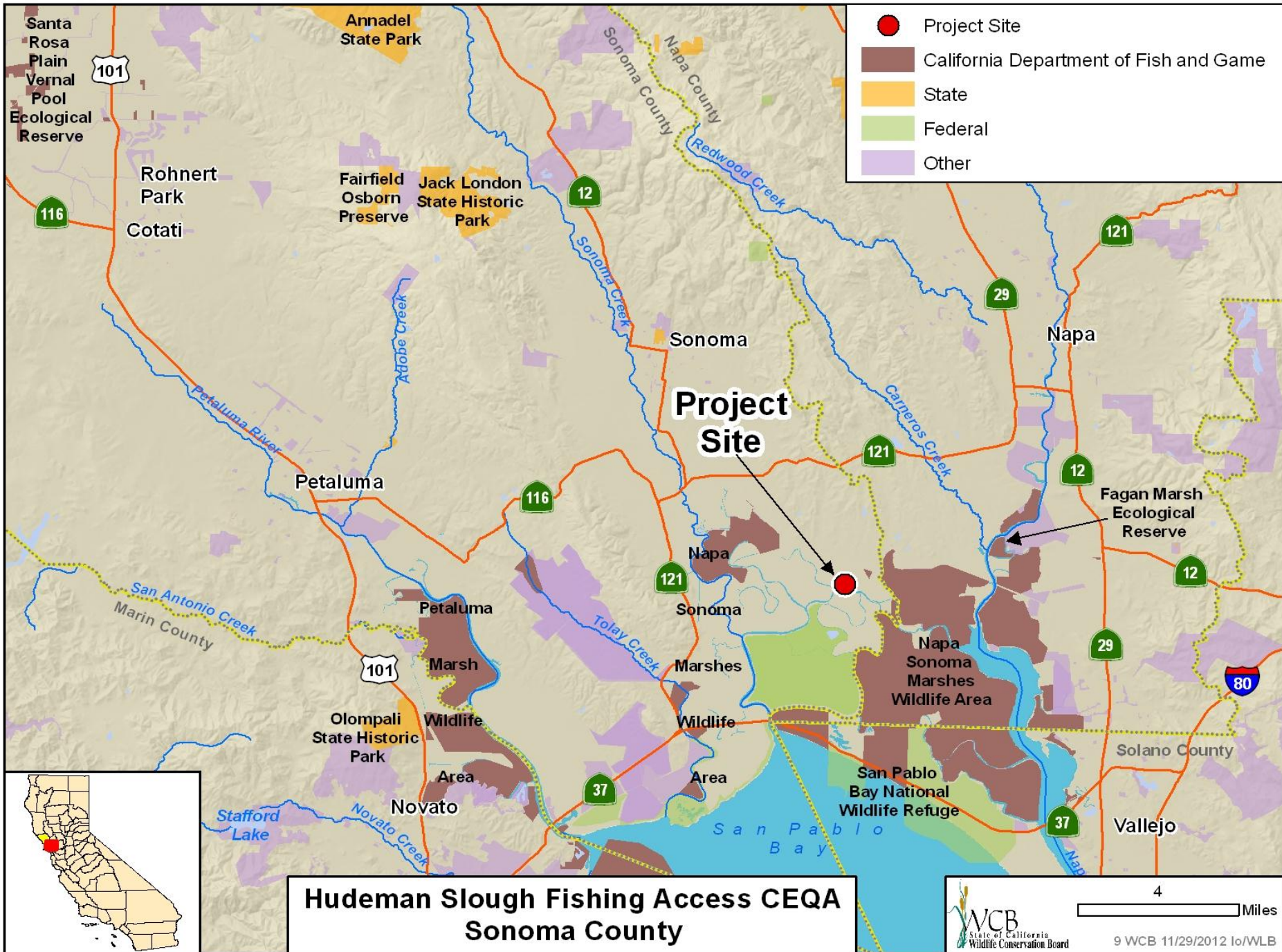
Before 1,000 acres @ \$7,000/acre	\$7,000,000
After 1,000 acres @ \$ 4,000/acre	<u>4,000,000</u>
Reduction of Value	\$ 3,000,000

#### **Giant Garter Snake Easement**

Before 1,000 acres @ \$7,000/acre	\$7,000,000
After 1,000 acres @ \$ 4,000/acre	<u>4,000,000</u>
Reduction of Value	\$ 3,000,000

#### **Tri-Colored Black Bird Easement**

Before 224 acres @ \$7,500/acre	\$1,680,000
After 224 acres @ \$ 3,929/acres	<u>880,000</u>
Reduction of Value	\$ 800,000



- Project Site
- California Department of Fish and Game
- State
- Federal
- Other

**Hudeman Slough Fishing Access CEQA  
Sonoma County**

## #9. Hudeman Slough Fishing Access CEQA Sonoma County

---



- Ramp with deposited mud

## #9. Hudeman Slough Fishing Access CEQA Sonoma County



- Gangway and dock twisting through tidal action and sediment deposits

## #9. Hudeman Slough Fishing Access CEQA Sonoma County

---

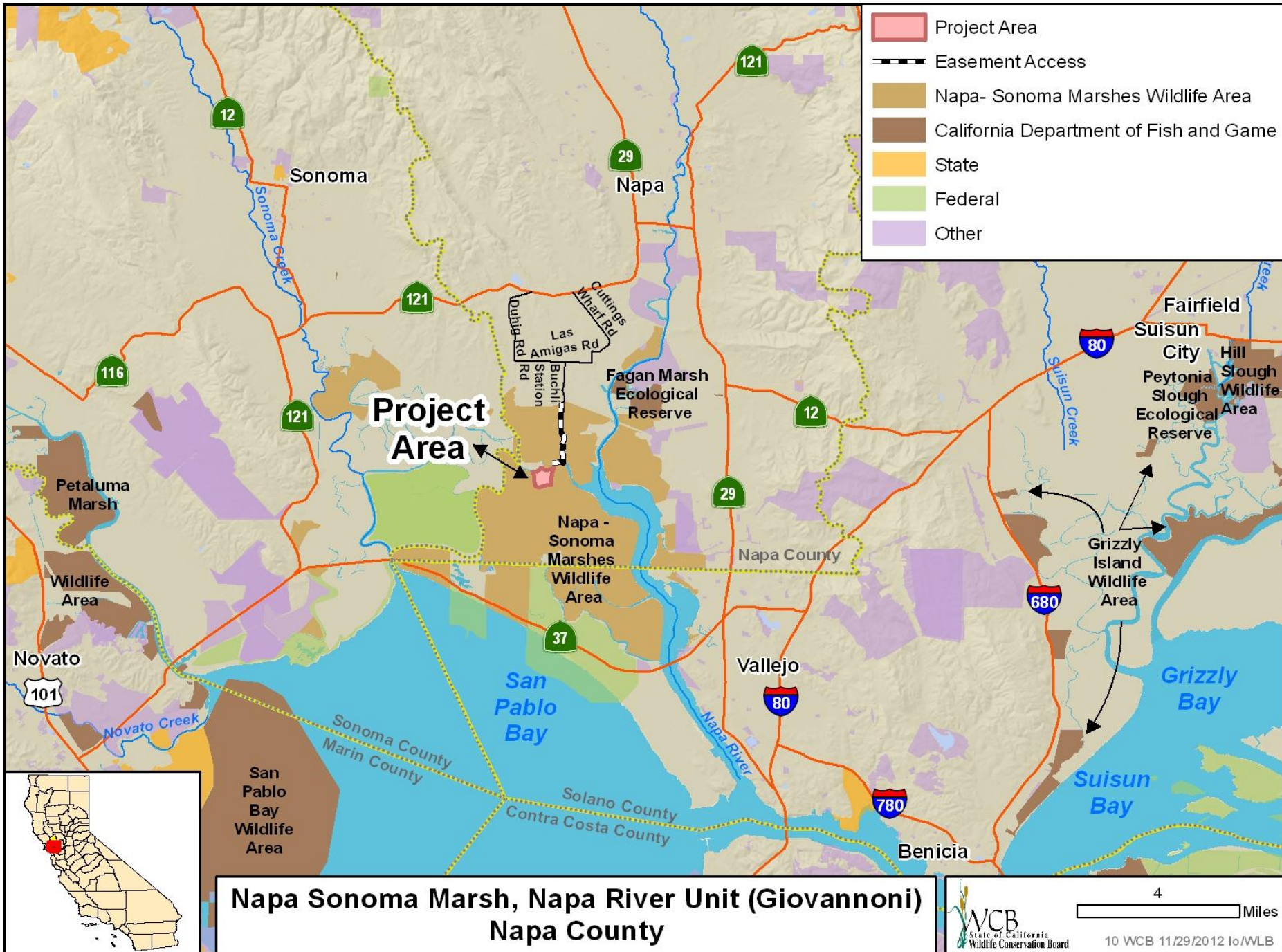


- Failing decking on dock

## #9. Hudeman Slough Fishing Access CEQA Sonoma County



- Repair in 2011 shown at high tide, temporarily keeping the dock usable



**Napa Sonoma Marsh, Napa River Unit (Giovannoni)  
Napa County**





#10. Napa Sonoma Marsh, Napa River Unit (Giovannoni)  
Napa County

---



- Looking north at the Giovannoni Property

#10. Napa Sonoma Marsh, Napa River Unit (Giovannoni)  
Napa County

---



- Northwest view of the levee and slough

#10. Napa Sonoma Marsh, Napa River Unit (Giovannoni)  
Napa County

---



- West toward Little Russ Island

#10. Napa Sonoma Marsh, Napa River Unit (Giovannoni)  
Napa County

---



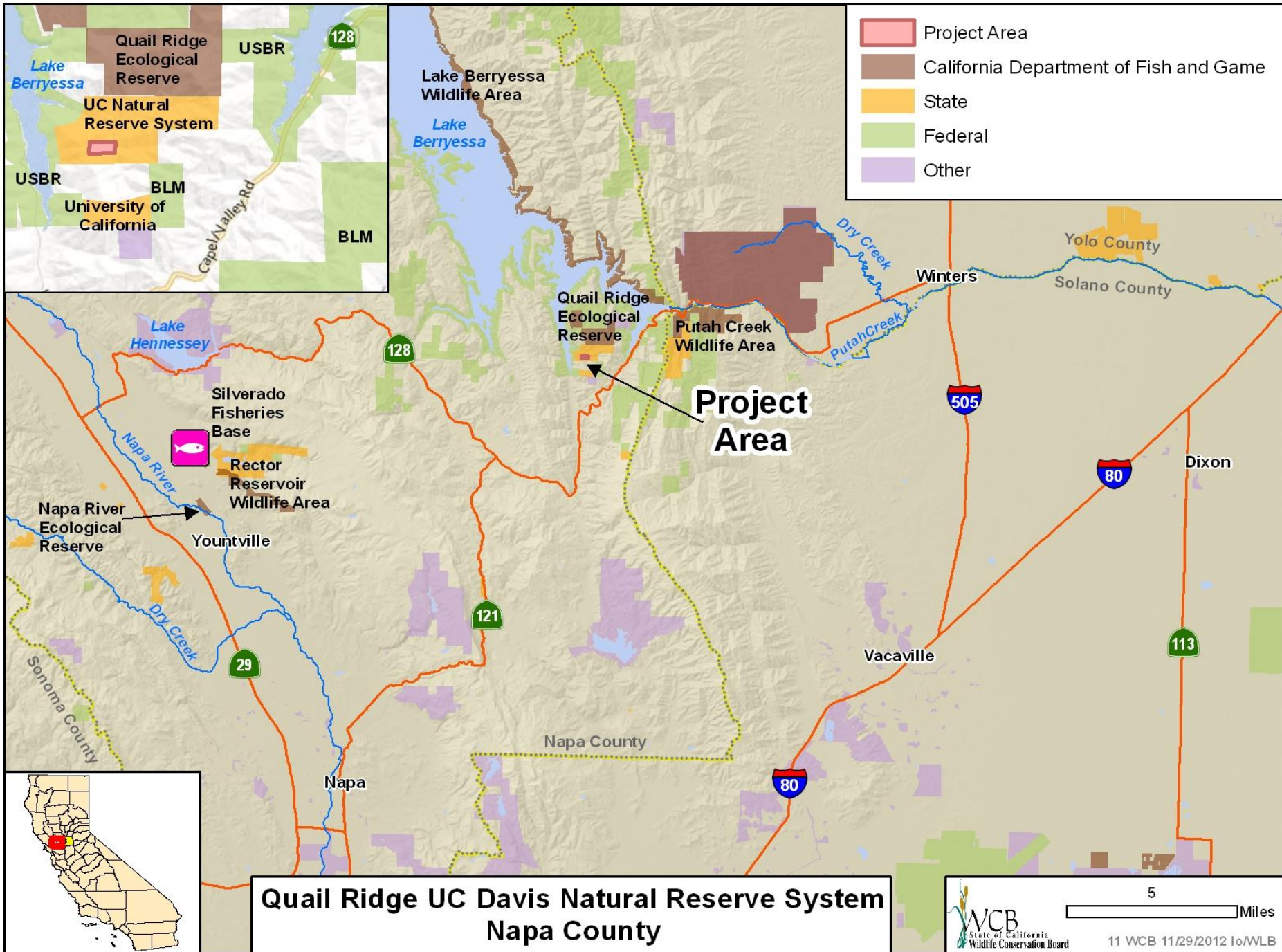
- Levee and Devil's Slough

#10. Napa Sonoma Marsh, Napa River Unit (Giovannoni)  
Napa County

---



- Levee encroachment on Giovannoni Property



# #11. Quail Ridge UC Davis Natural Reserve System Napa County

---

- Decker Pond, a seasonal stock pond used by university researchers



# #11. Quail Ridge UC Davis Natural Reserve System Napa County

---



- View from the west with deer in the background

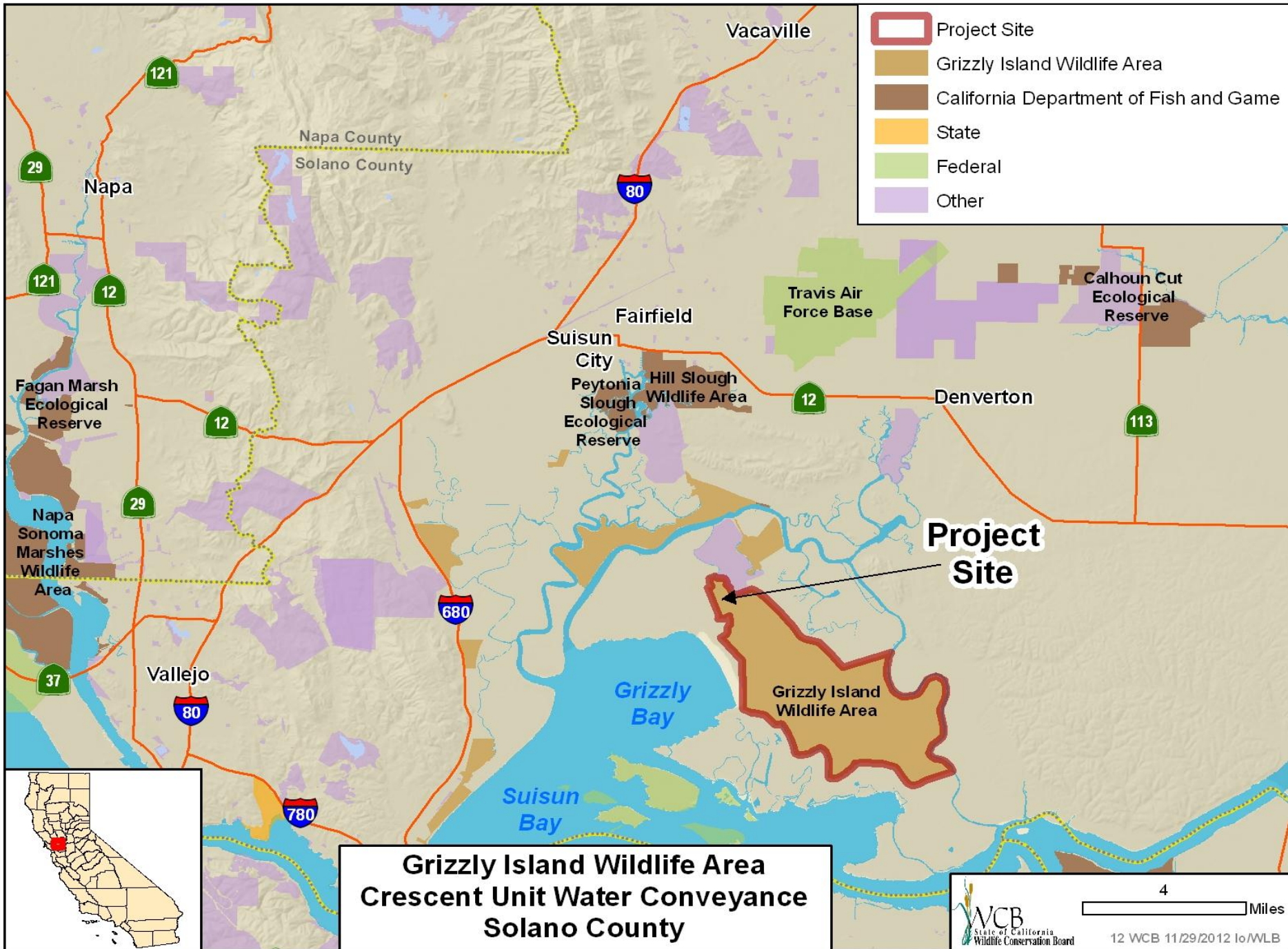


# #11. Quail Ridge UC Davis Natural Reserve System Napa County

---



- Easterly view above Decker Pond of university research equipment



- Project Site
- Grizzly Island Wildlife Area
- California Department of Fish and Game
- State
- Federal
- Other

**Grizzly Island Wildlife Area  
Crescent Unit Water Conveyance  
Solano County**

## #12. Grizzly Island WA, Crescent Unit Water Conveyance Solano County



- Existing ditch in Crescent Unit that will be connected to new water supply ditch. Notice the rusted out water control structure pipe.

## #12. Grizzly Island WA, Crescent Unit Water Conveyance Solano County

---



- Existing junction of where the supply ditch will be connected to the Crescent Unit. The water will be piped under the fence and country road to the Crescent unit.

# #12. Grizzly Island WA, Crescent Unit Water Conveyance Solano County

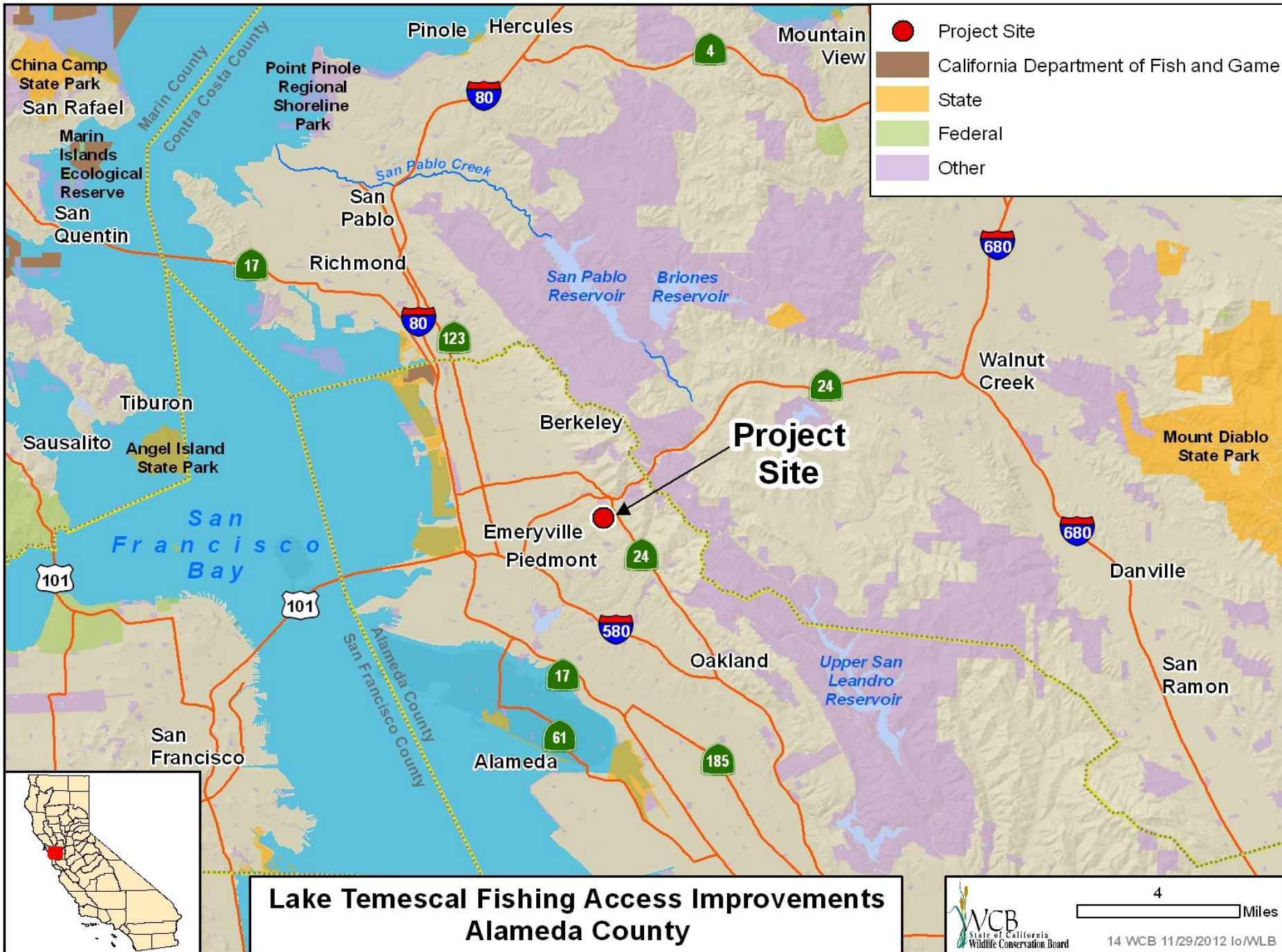
## ■ Water Delivery Improvement



#13. East Contra Costa NCCP/HCP (Alaimo)  
Contra Costa County (**pulled**)

---

- This proposal was withdrawn from consideration at this time



**Lake Temescal Fishing Access Improvements  
Alameda County**

## #14. Lake Temescal Fishing Access Improvements Alameda County

---



- One of two piers to be replaced



## #14. Lake Temescal Fishing Access Improvements Alameda County

---



- One of two piers to be replaced

## #14. Lake Temescal Fishing Access Improvements Alameda County

---



- Erosive bank to be stabilized

## #14. Lake Temescal Fishing Access Improvements Alameda County

---

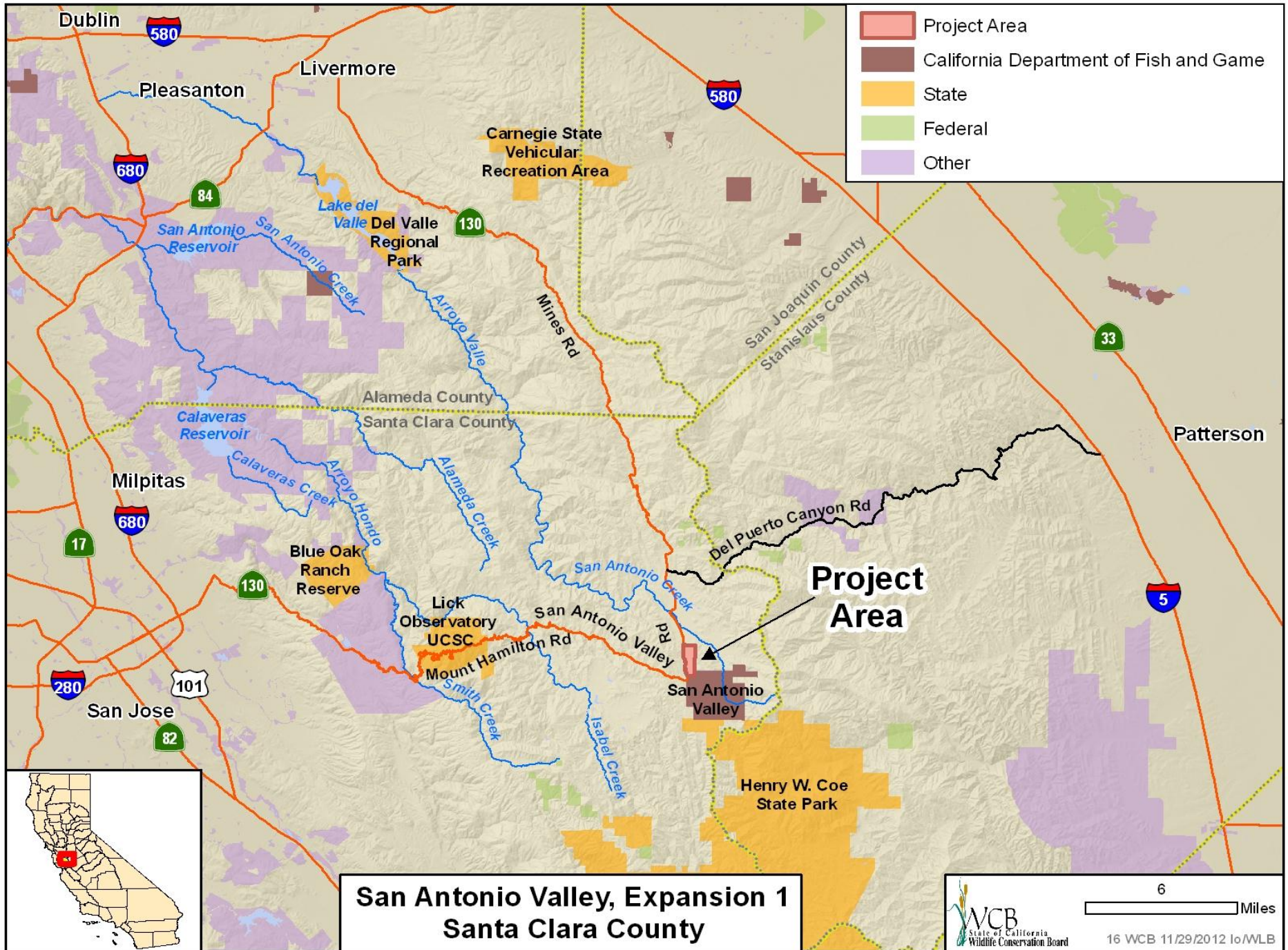


- Restroom doors to be widened

#15. SJRP Riverbottom Park and Schneider  
Property Habitat Restoration  
Fresno and Madera Counties **(pulled)**

---

- This proposal was withdrawn from consideration at this time



<span style="display:inline-block; width:15px; height:10px; background-color:red; border:1px solid black;"></span>	Project Area
<span style="display:inline-block; width:15px; height:10px; background-color:darkred; border:1px solid black;"></span>	California Department of Fish and Game
<span style="display:inline-block; width:15px; height:10px; background-color:orange; border:1px solid black;"></span>	State
<span style="display:inline-block; width:15px; height:10px; background-color:lightgreen; border:1px solid black;"></span>	Federal
<span style="display:inline-block; width:15px; height:10px; background-color:lightpurple; border:1px solid black;"></span>	Other

**San Antonio Valley, Expansion 1  
Santa Clara County**



WCB  
State of California  
Wildlife Conservation Board

6 Miles

16 WCB 11/29/2012 lo/WLB

## #16. San Antonio Valley Ecological Reserve Expansion Santa Clara County

- The property is characterized by rolling foothills and grassy meadows dotted with oak trees, manzanita and chaparral



## #16. San Antonio Valley Ecological Reserve Expansion Santa Clara County

---



- The property includes a prominent water feature

## #16. San Antonio Valley Ecological Reserve Expansion Santa Clara County



(Photo courtesy of the Rocky Mountain Elk Foundation)

- The property serves as habitat for Tule elk. The elk's migration trail traverses the property

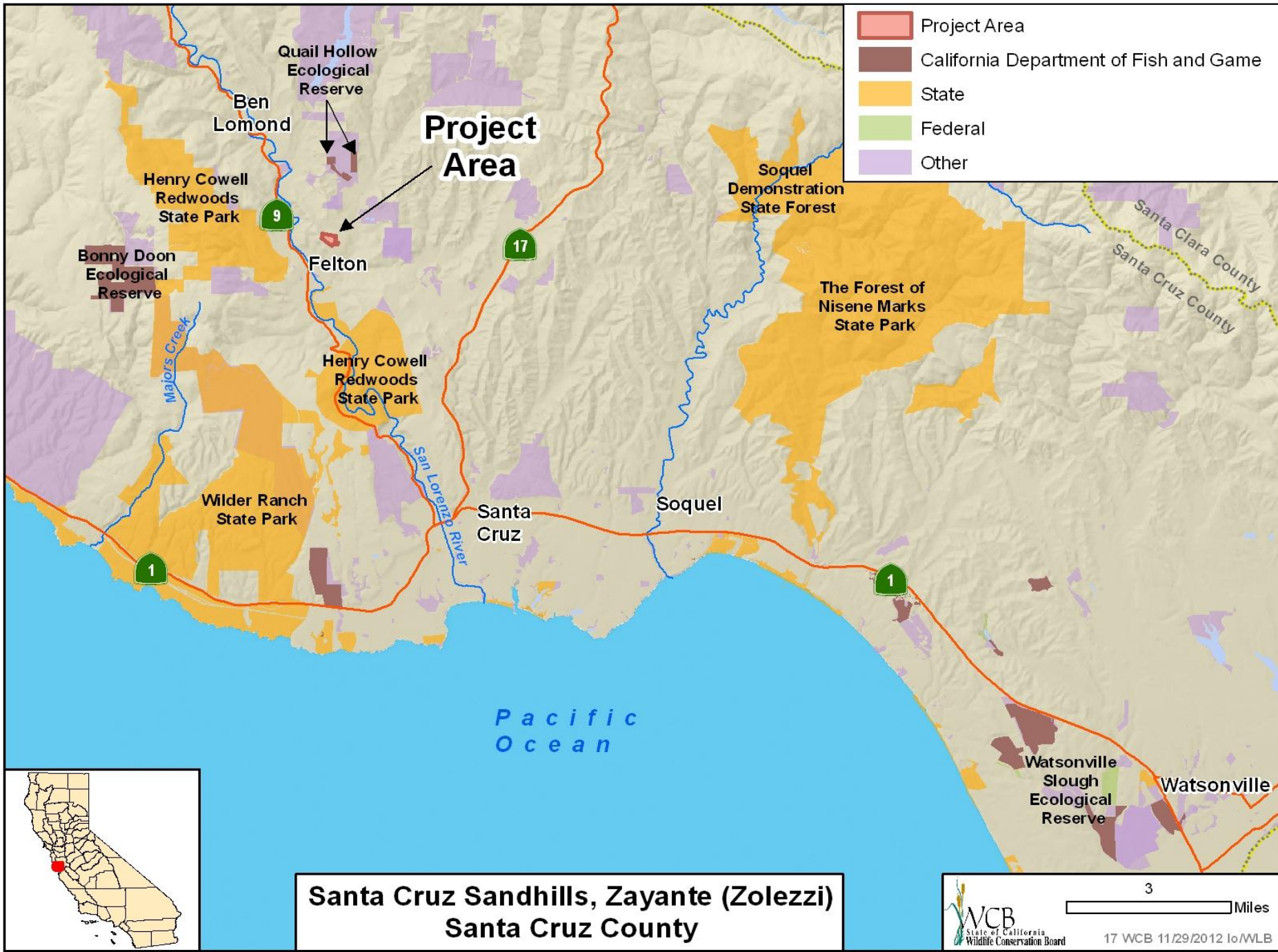


## #16. San Antonio Valley Ecological Reserve Expansion Santa Clara County



(Photo courtesy of the Rocky Mountain Elk Foundation)

- The property will become an addition to DFG's South Valley Ranch Wildlife Area.



# #17. Santa Cruz Sandhills, Zayante (Zolezzi) Santa Cruz County

---

- Federally endangered Ben Lomond wallflower



#17. Santa Cruz Sandhills, Zayante (Zolezzi)  
Santa Cruz County

---



- Extraordinarily rare sand parkland habitat

#17. Santa Cruz Sandhills, Zayante (Zolezzi)  
Santa Cruz County

---



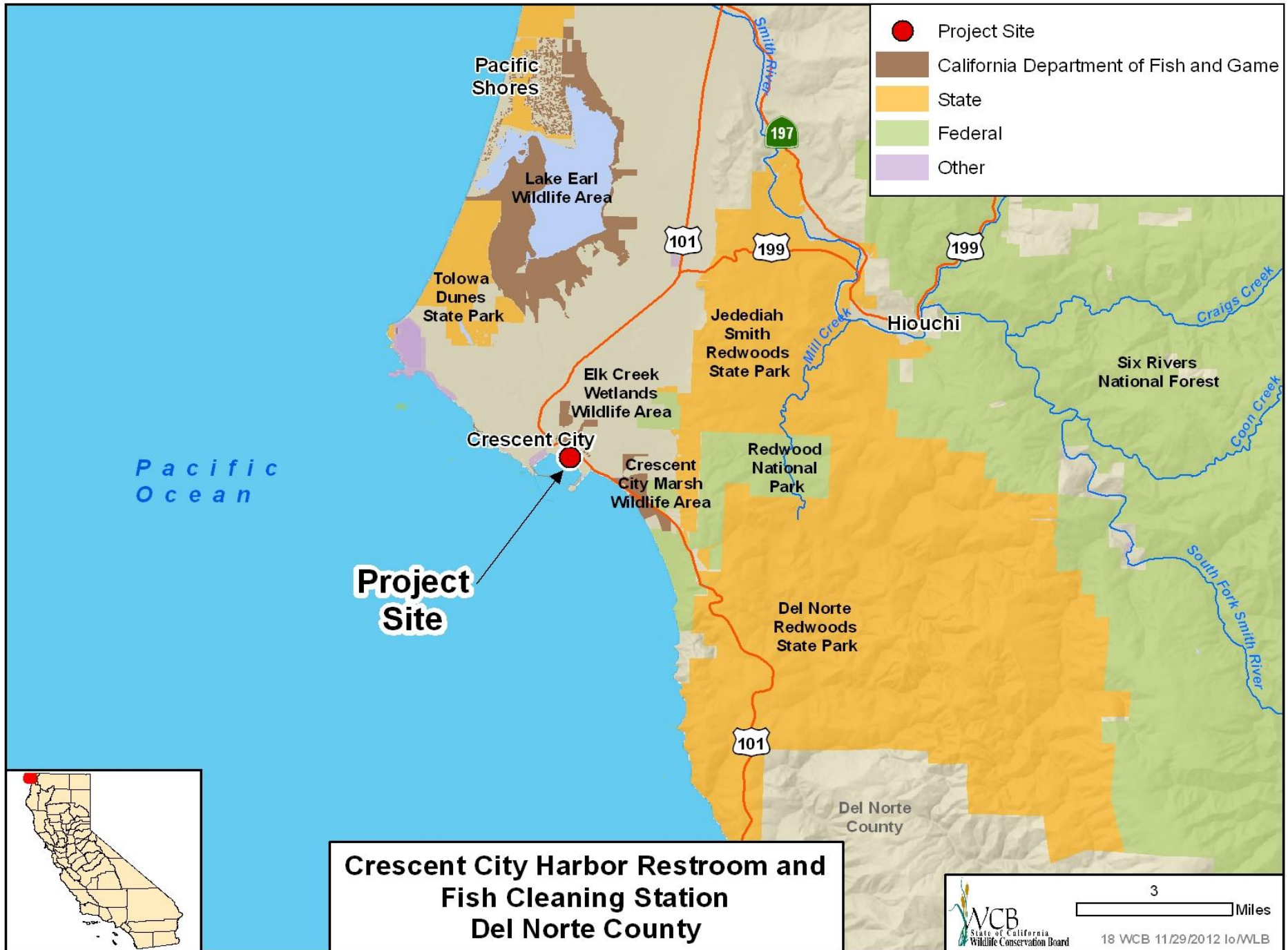
- Mount Hermon june beetle on sand

#17. Santa Cruz Sandhills, Zayante (Zolezzi)  
Santa Cruz County

---



- Endemic Ben Lomond buckwheat



- Project Site
- California Department of Fish and Game
- State
- Federal
- Other

**Crescent City Harbor Restroom and  
Fish Cleaning Station  
Del Norte County**

# #18. Crescent City Harbor Restroom and Fish Cleaning Station Del Norte County

- Location of restroom and fish cleaning station to be constructed at the Crescent City harbor





## #18. Crescent City Harbor Restroom and Fish Cleaning Station Del Norte County

---



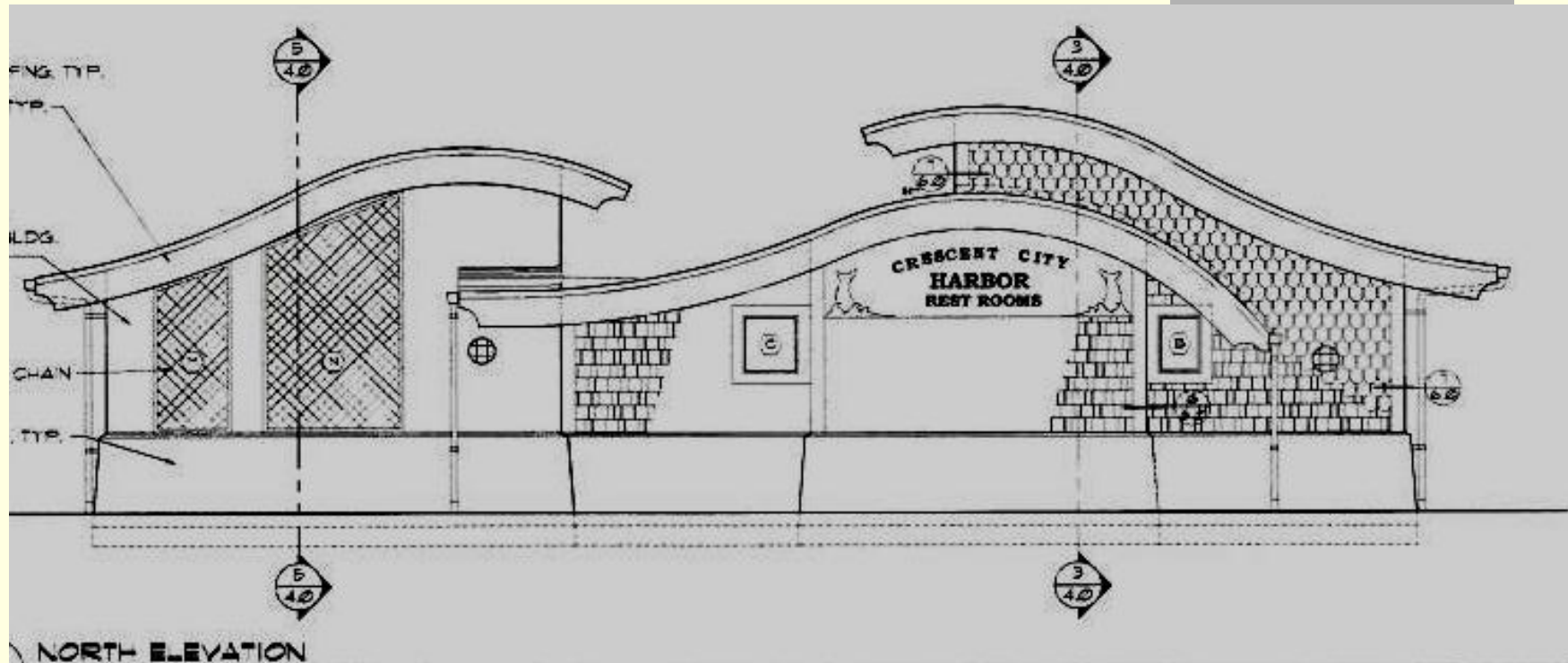
- North Restroom and Fish Cleaning Station site location looking southerly across the Inner Boat Basin

## #18. Crescent City Harbor Restroom and Fish Cleaning Station Del Norte County

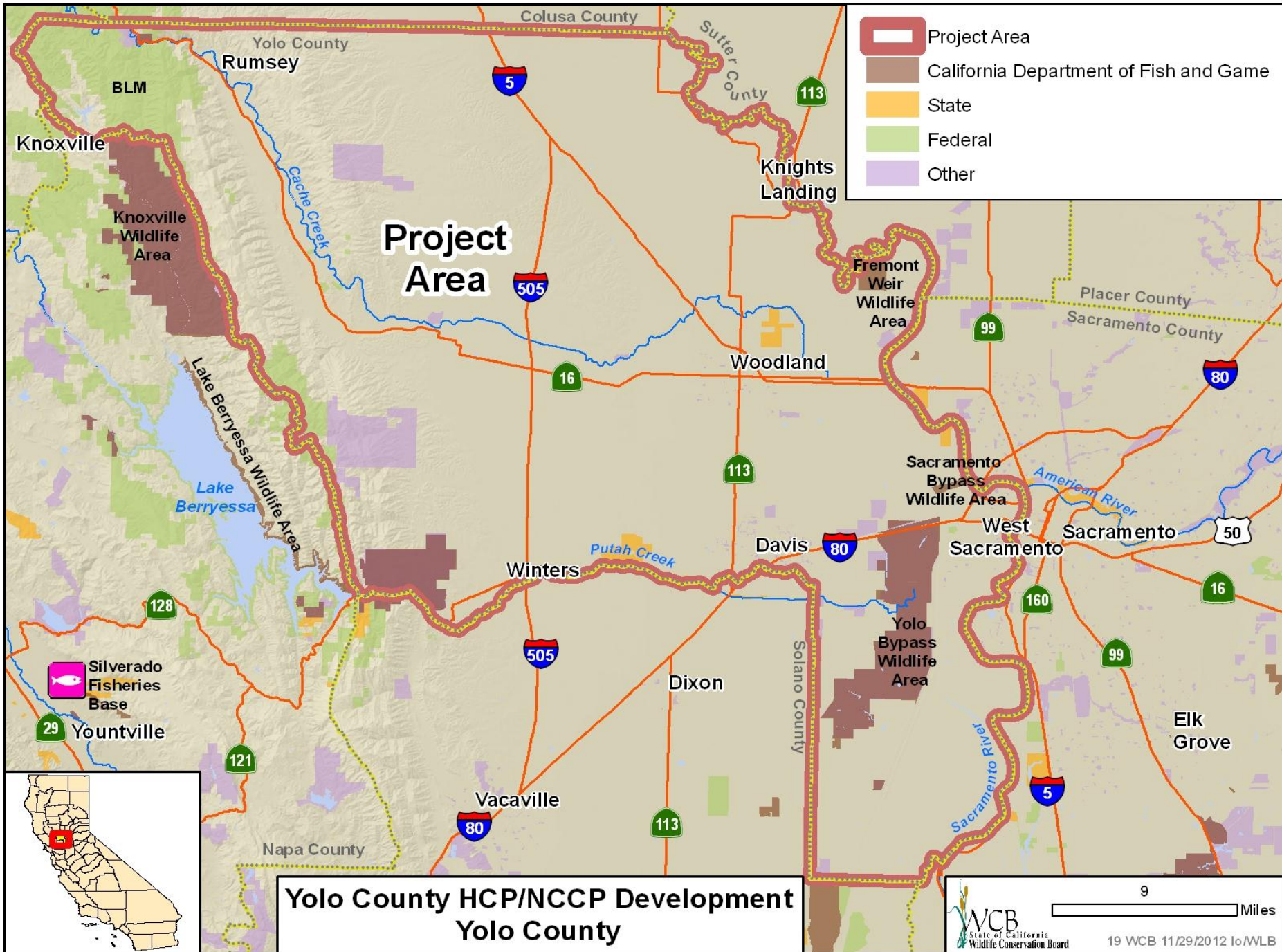


- North Restroom and Fish Cleaning Station site location looking easterly across the Inner Boat Basin

# #18. Crescent City Harbor Restroom and Fish Cleaning Station Del Norte County



- Architectural drawings of restroom and fish cleaning station



# #19. Yolo County HCP/NCCP Development Yolo County

---



- Vernal Pool

## #19. Yolo County HCP/NCCP Development Yolo County

---



- Native Grasslands at Conaway Ranch

## #19. Yolo County HCP/NCCP Development Yolo County



Photo courtesy of Charles Tyson



- Burrowing Owl and burrows in grassland

## #19. Yolo County HCP/NCCP Development Yolo County

---



- Irrigated pasture



# #19. Yolo County HCP/NCCP Development Yolo County

---



- Alfalfa field

# #19. Yolo County HCP/NCCP Development Yolo County

---



Photo courtesy of Ted Beedy

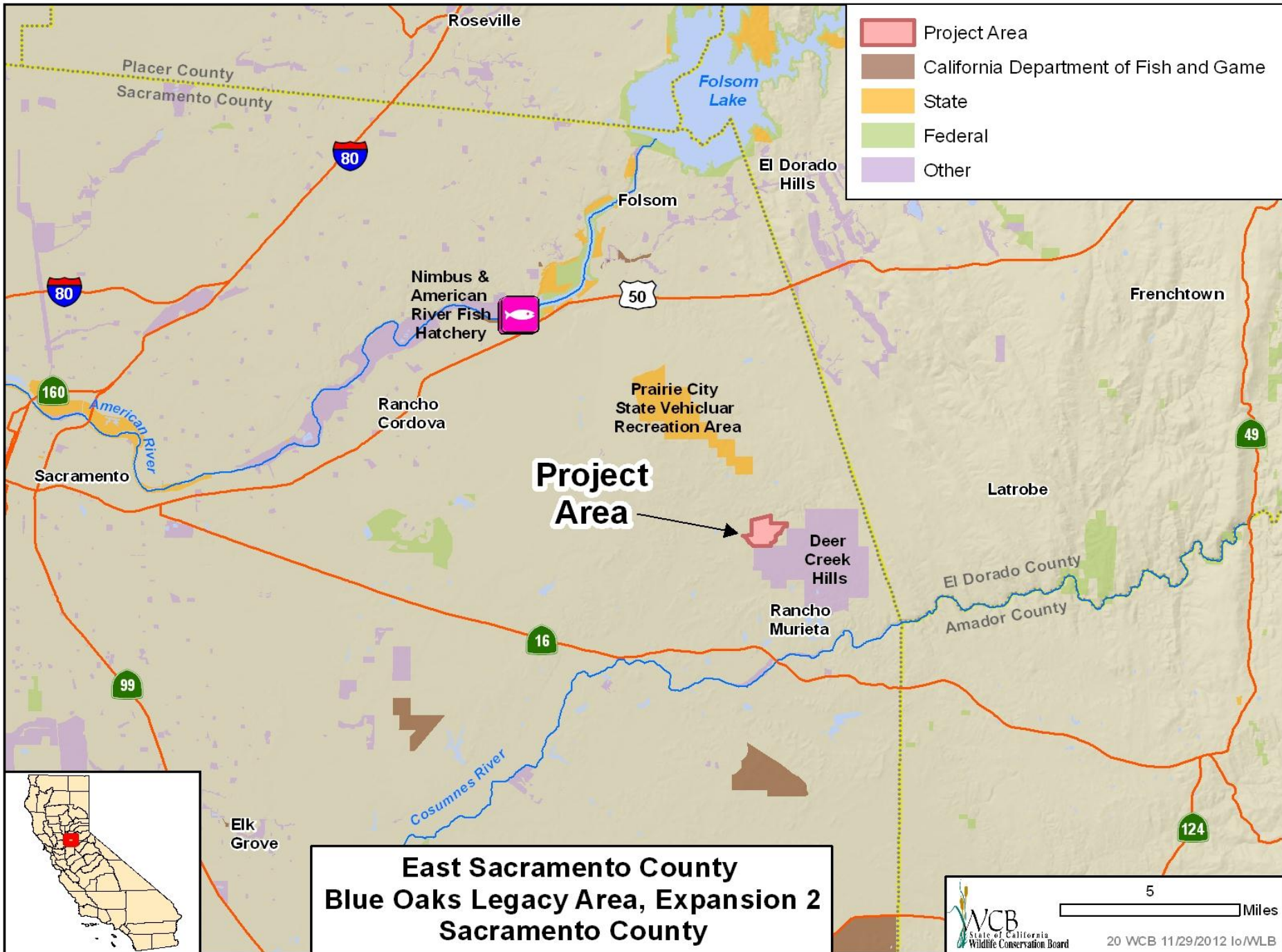
- Tri-colored blackbird

## #19. Yolo County HCP/NCCP Development Yolo County

---



- Vernal pool and grassland habitats

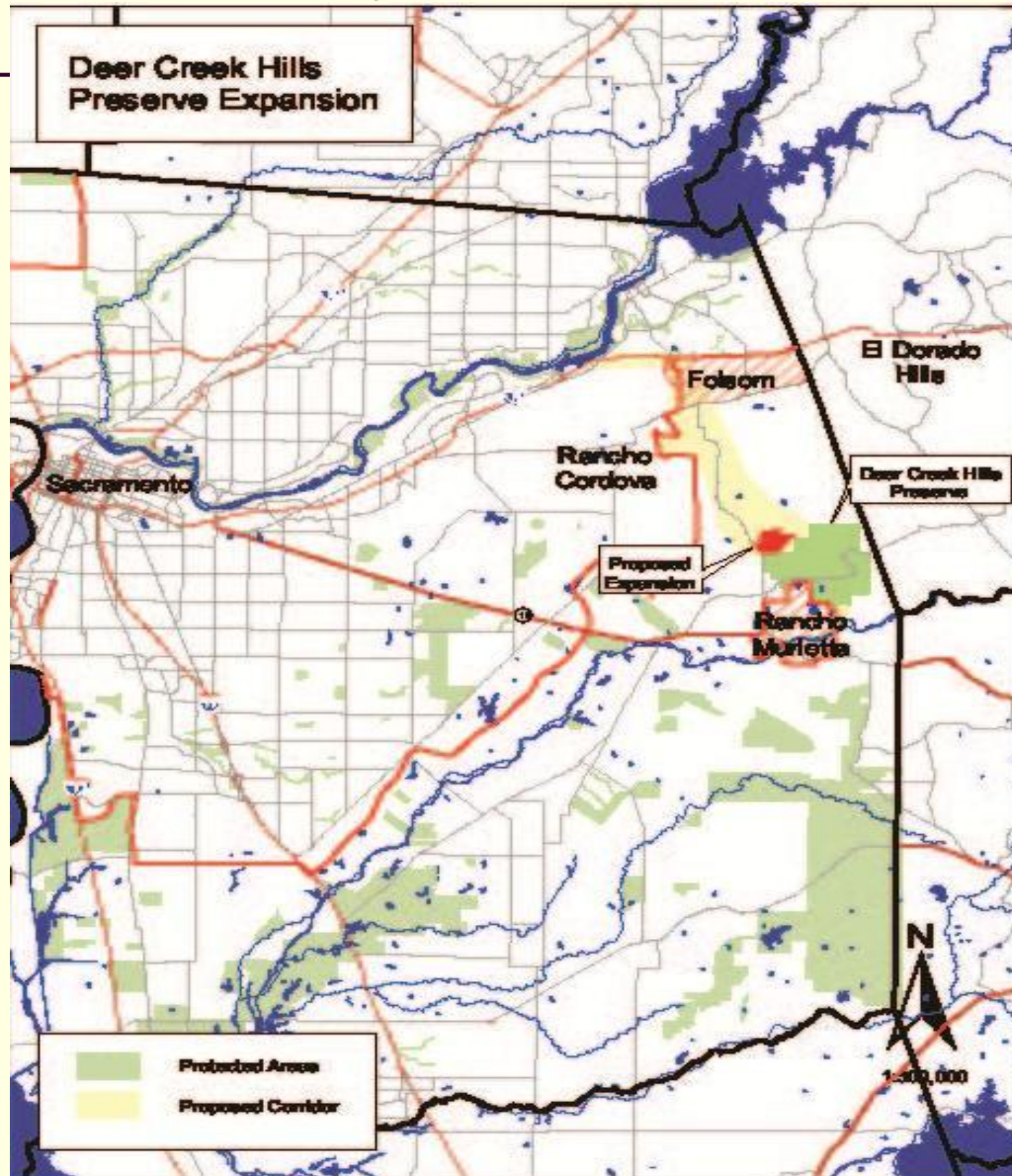


- Project Area
- California Department of Fish and Game
- State
- Federal
- Other

**East Sacramento County  
Blue Oaks Legacy Area, Expansion 2  
Sacramento County**



#20. East Sacramento County Blue Oaks Legacy Area, Exp. 2  
Sacramento County



#20. East Sacramento County Blue Oaks Legacy Area, Exp. 2  
Sacramento County

---



- Easterly view of Deer Creek

#20. East Sacramento County Blue Oaks Legacy Area, Exp. 2  
Sacramento County

---



- Southerly view of open space grassland and oak woodland in the background

#20. East Sacramento County Blue Oaks Legacy Area, Exp. 2  
Sacramento County

---



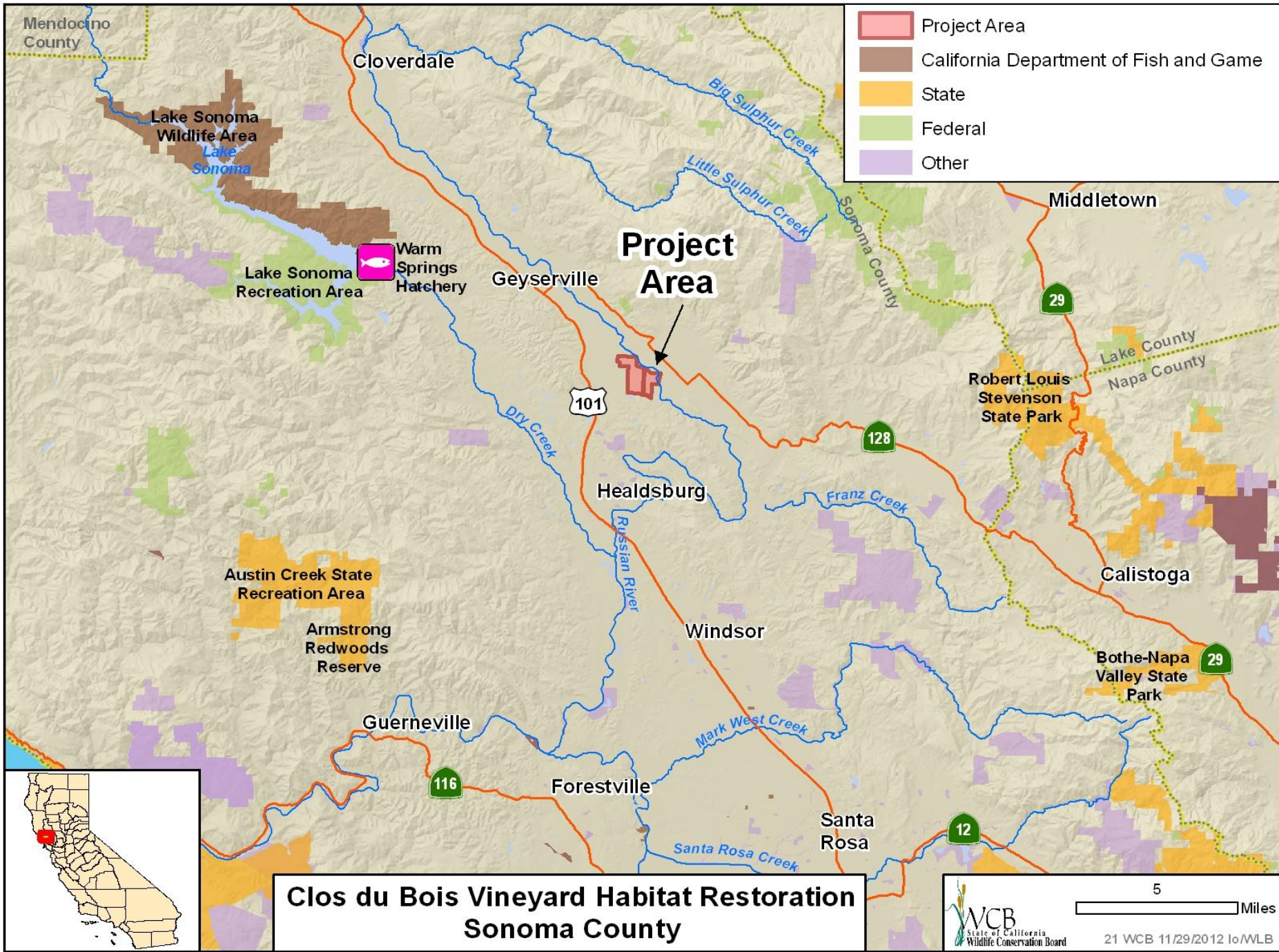
- Westerly view of subject property



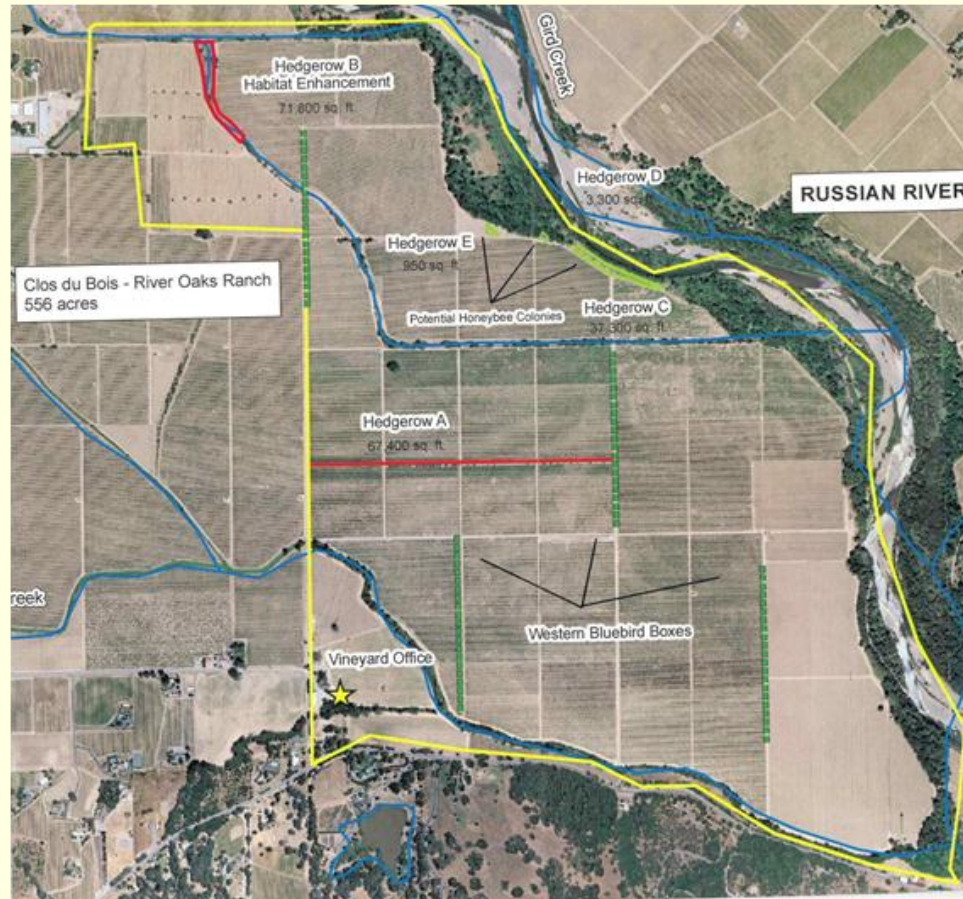
## #20. East Sacramento County Blue Oaks Legacy Area, Exp. 2 Sacramento County

- Youth group participating in the YES (Youth, Education, and Stewardship) program administered on the Deer Creek Hills Preserve





# #21. Clos du Bois Vineyard Habitat Restoration Sonoma County



- Aerial view of Clos du Bois Vineyard

## #21. Clos du Bois Vineyard Habitat Restoration Sonoma County



- This road will host blue bird boxes

## #21. Clos du Bois Vineyard Habitat Restoration Sonoma County



- Hedgerow A will be planted along with existing prune trees

## #21. Clos du Bois Vineyard Habitat Restoration Sonoma County



- Location of Hedgerow B

## #21. Clos du Bois Vineyard Habitat Restoration Sonoma County

---



- Location of Hedgerow E

## #21. Clos du Bois Vineyard Habitat Restoration Sonoma County

---



- Location of Hedgerow C



## #21. Clos du Bois Vineyard Habitat Restoration Sonoma County



- Example of recent hedgerow plantings located at The Center's office



## #22. Campstool Ranch Calaveras County

---



- Timber stands and habitat on the Property

## #22. Campstool Ranch Calaveras County

---



- Viewshed through managed forest area

## #22. Campstool Ranch Calaveras County

---



- Historic stone flumes on the property

## #22. Campstool Ranch Calaveras County

---

- Historic stone flumes on the Property



## #22. Campstool Ranch Calaveras County

---



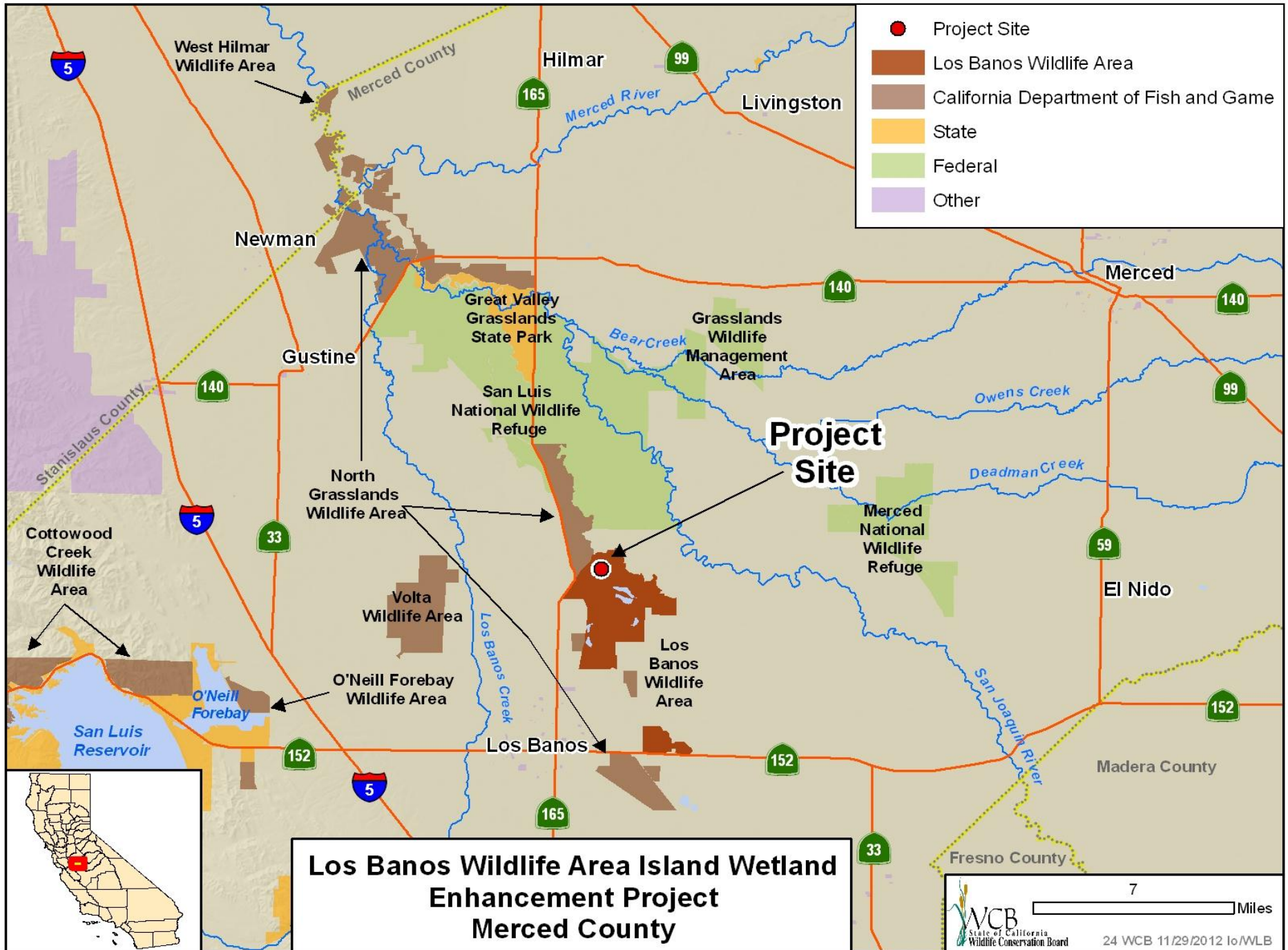
- Historic mining tunnel

## #22. Campstool Ranch Calaveras County



- Markers showing a link to the family history on the property





**Los Banos Wildlife Area Island Wetland Enhancement Project  
Merced County**

# Los Banos WA Island Restoration Project

## California Waterfowl Proposed Project

Pipeline, Fencing, Pump, Solar, Interpretive Trail, & Ditch Removal Portions of the Project



Interpretive Trail

New Pipeline

Existing Gravity Flow Pipeline

Existing Presurized Pipeline

Old Concrete Ditch Removal

Check Valve

Existing Fencing

New Fencing

New Access Gates

Pipeline Valve Enhancement

20 HP Low Lift Pump

0 335 670 1,340 Feet



## #23. Los Banos WA, Island Wetland Enhancement Merced County

---



- Two pumps to be rehabilitated and a solar array to be installed

## #23. Los Banos WA, Island Wetland Enhancement Merced County

---



- Debris to be removed

## #23. Los Banos WA, Island Wetland Enhancement Merced County



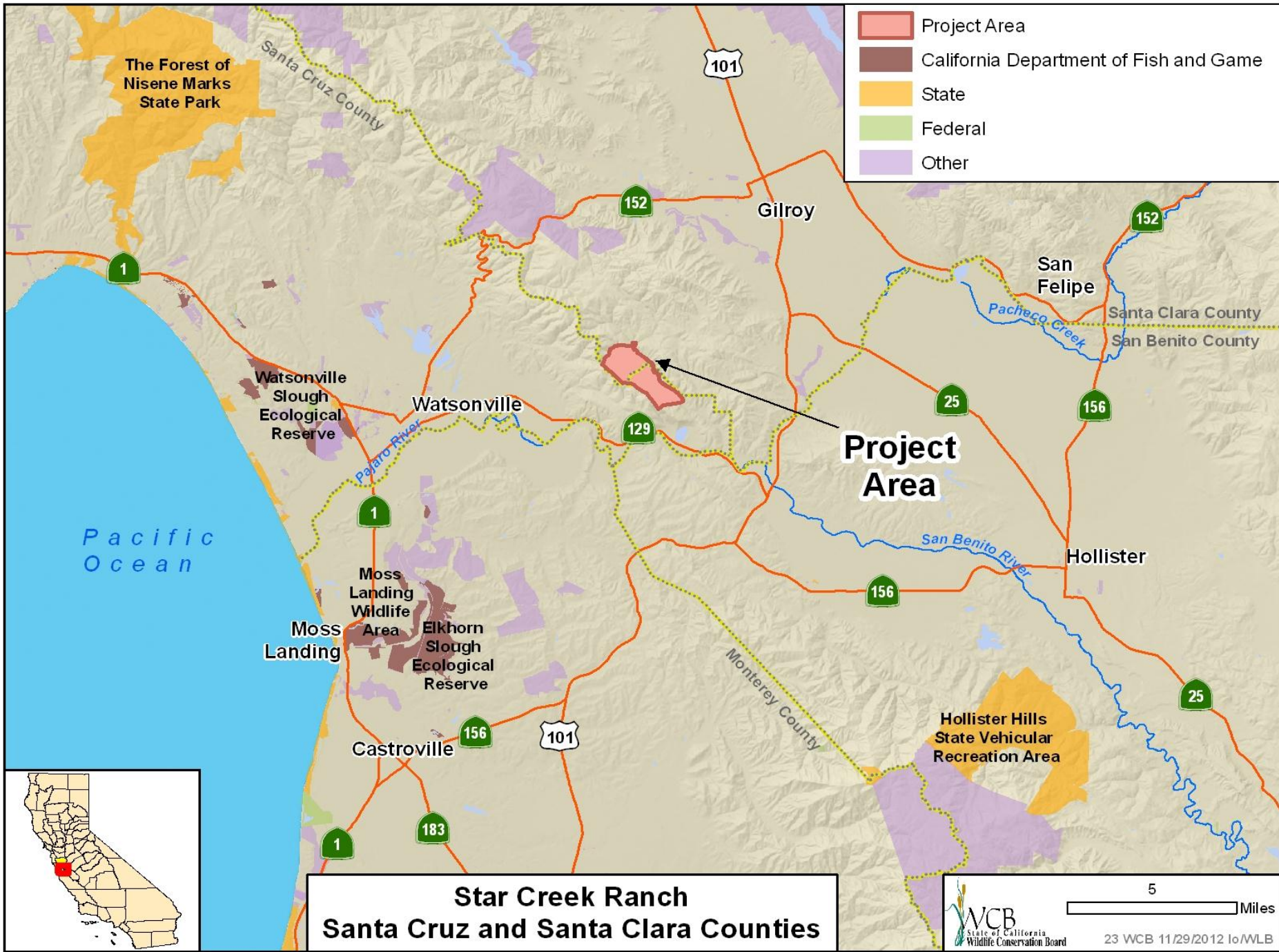
- Fence to be removed and replaced

## #23. Los Banos WA, Island Wetland Enhancement Merced County

---



- Trail to be resurfaced and interpretive panels added



## #24. Star Creek Ranch Santa Cruz and Santa Clara Counties

---



- Typical view of Star Creek Ranch – Sierra Azul Range of the southern Santa Cruz Mountains



## #24. Star Creek Ranch Santa Cruz and Santa Clara Counties

---



- Star Creek Ranch near Atherton Peak

## #24. Star Creek Ranch Santa Cruz and Santa Clara Counties

---



Photo Courtesy of Land Trust of Santa Cruz County

- View of the lower slopes and drainages of Star Creek Ranch

## #24. Star Creek Ranch Santa Cruz and Santa Clara Counties

---



Photo Courtesy of Land Trust of Santa Cruz County

- Typical view of subject property

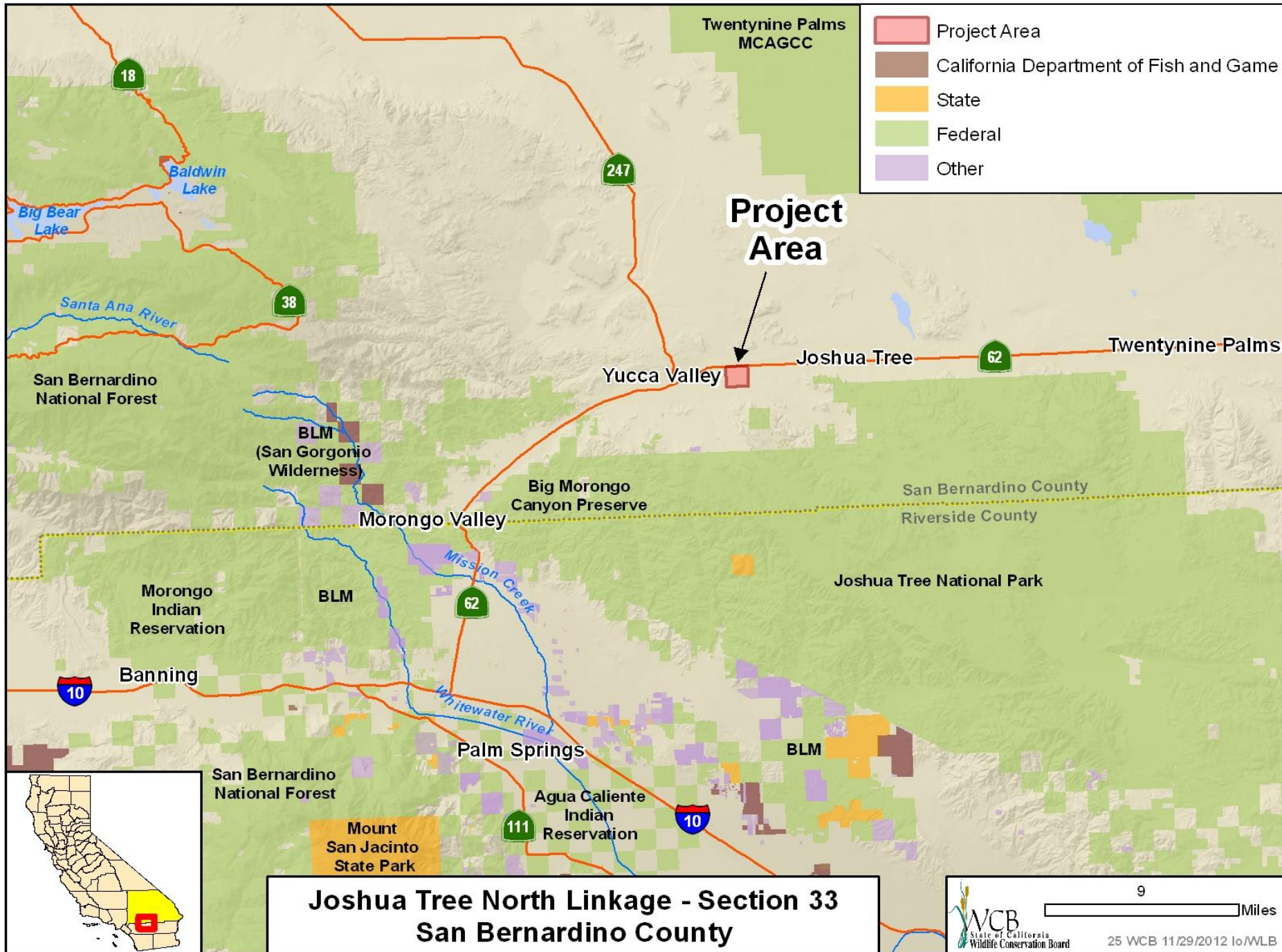
## #24. Star Creek Ranch Santa Cruz and Santa Clara Counties

---

- View of the forested area of Star Creek Ranch



Photo Courtesy of Land Trust of Santa Cruz County



## #25. Joshua Tree North Linkage - Section 33 San Bernardino County

---



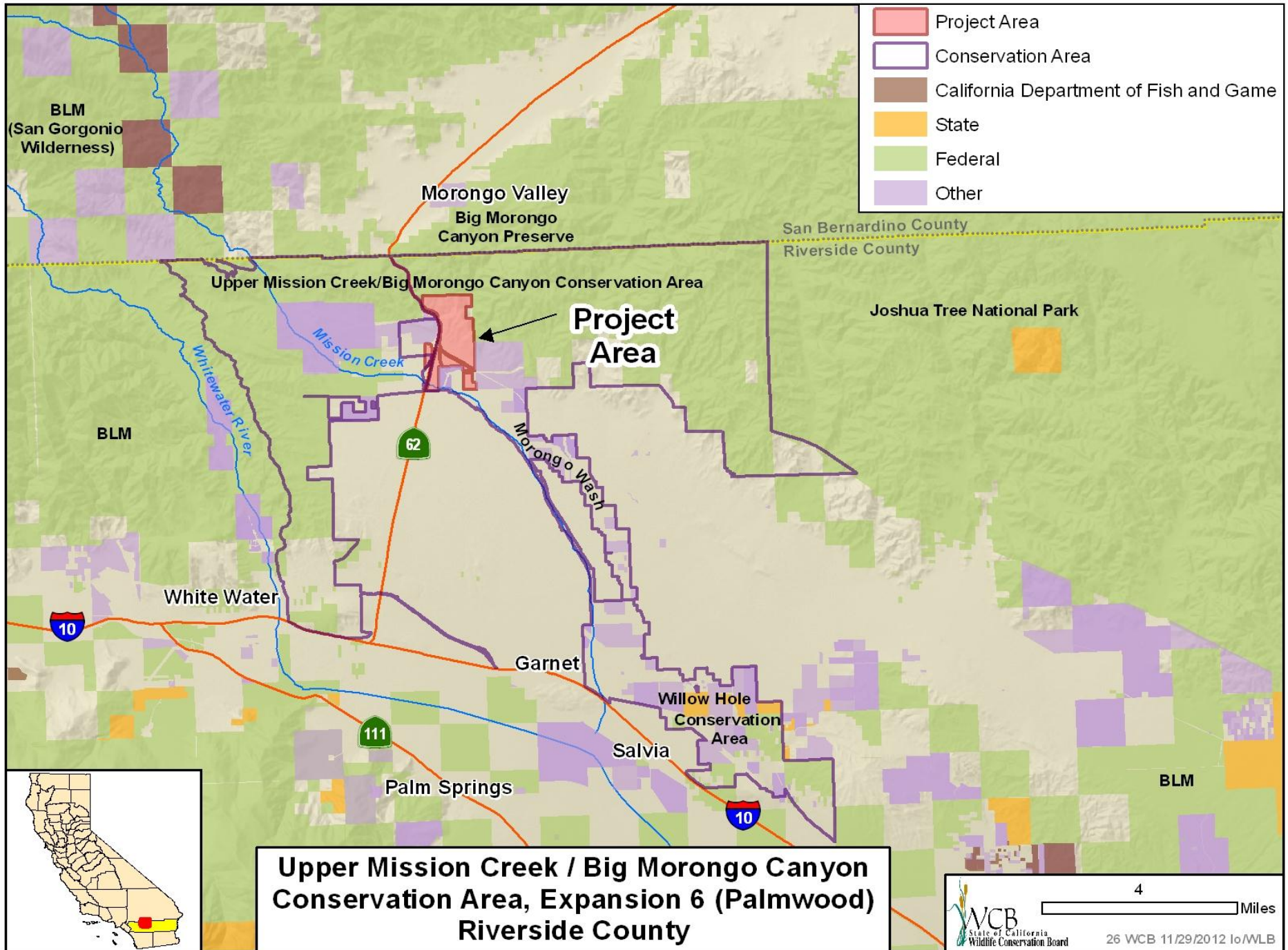
Photo Courtesy of Mojave Desert Land Trust

## #25. Joshua Tree North Linkage - Section 33 San Bernardino County



View of San Geronio from Section 33, Joshua Tree  
Photo Courtesy of Mojave Desert Land Trust

- View of San Geronio from Section 33, Joshua Tree



- Project Area
- Conservation Area
- California Department of Fish and Game
- State
- Federal
- Other

**Upper Mission Creek / Big Morongo Canyon Conservation Area, Expansion 6 (Palmwood) Riverside County**



#26. Upper Mission Creek / Big Morongo Canyon  
Conservation Area, Expansion 6 (Palmwood)  
Riverside County

---



- Looking North from North Indian Canyon Drive

#26. Upper Mission Creek / Big Morongo Canyon  
Conservation Area, Expansion 6 (Palmwood)  
Riverside County

---



- Looking West across State Route 62

#26. Upper Mission Creek / Big Morongo Canyon  
Conservation Area, Expansion 6 (Palmwood)  
Riverside County

---



- Looking South/Southwest from North Indian Canyon Drive



## #27. Anza-Borrego Desert Research Center Renovation San Diego County



- Borrego Springs Desert Club building will serve as the Steele Burnand Anza Borrego Desert Research Center for research and educational activities

## #27. Anza-Borrego Desert Research Center Renovation San Diego County



- The project will expand the footprint of the facilities

## #27. Anza-Borrego Desert Research Center Renovation San Diego County




- Artist rendering of what the new footprint will look like adjacent to the existing facility




- Project Area
- San Luis Rey Watershed
- California Department of Fish and Game
- State
- Federal
- Other

**Carlsbad Hydrologic Unit and San Luis Rey Watershed Exotic Invasives Removal, Phase II  
San Diego County**



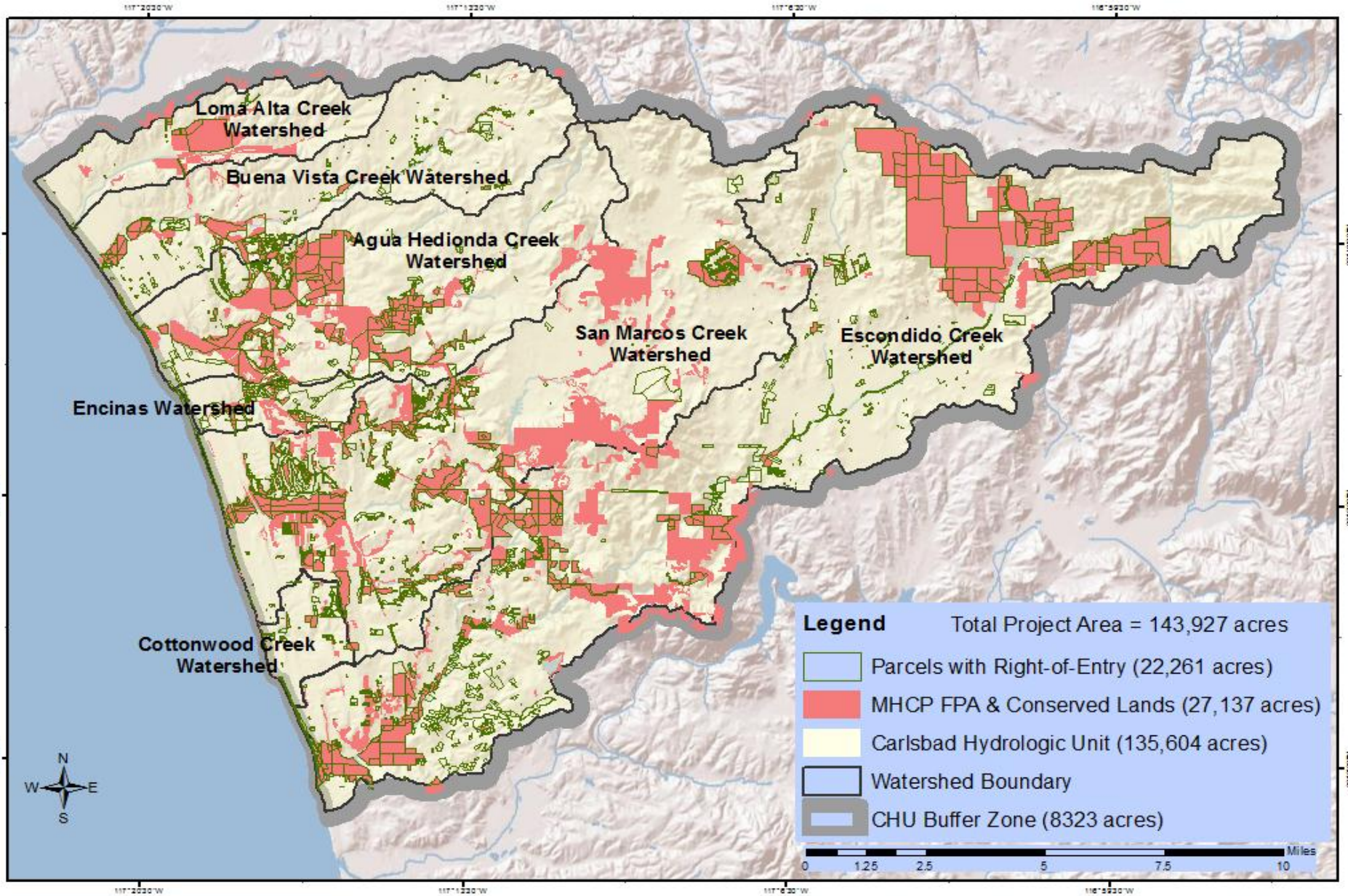
WCB  
State of California  
Wildlife Conservation Board

10 Miles



28 WCB 11/29/2012 lo/WLB





## Carlsbad Hydrologic Unit Invasive Vegetation Control and Habitat Restoration Program

Areas outlined in green indicate properties where landowners granted permission to treat invasive species to the Program. Red-shaded areas indicate Focused Planning Area under the Multiple Habitat Conservation Program as well as SANDAG's Conserved Lands database.



# San Luis Rey: treatment status of Arundo.

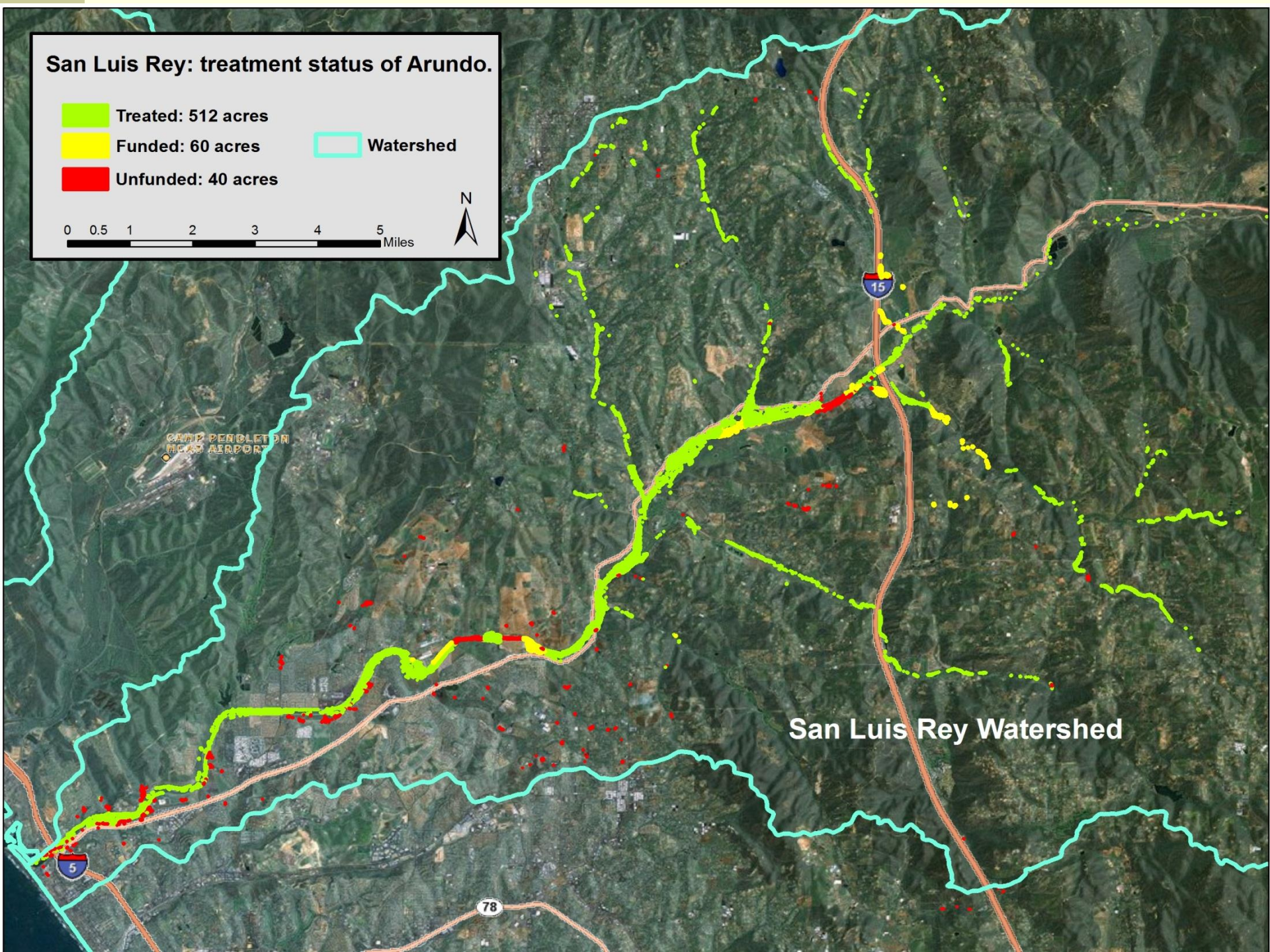
 Treated: 512 acres

 Funded: 60 acres

 Unfunded: 40 acres

 Watershed

0 0.5 1 2 3 4 5 Miles



San Luis Rey Watershed

#28. Carlsbad Hydrologic Unit and San Luis Rey Watershed Exotic Invasives Removal, Phase II  
San Diego County



- Pampas grass, Canary Island date palm, and iceplant infestation in the Encinas Creek floodplain, which contains potential habitat for Least Bell's Vireo.

#28. Carlsbad Hydrologic Unit and San Luis Rey Watershed Exotic Invasives Removal, Phase II  
San Diego County



- Riparian zone in Buena Vista Creek infested with giant reed; site is approximately one-half mile upstream of the Buena Creek Ecological Reserve.

#28. Carlsbad Hydrologic Unit and San Luis Rey Watershed Exotic Invasives Removal, Phase II  
San Diego County



- Castor bean and non-native grasses dominate hillsides surrounding this tributary to Agua Hedionda Creek in Carlsbad, CA; site is approximately one mile away from the Agua Hedionda Lagoon Ecological Reserve.

#28. Carlsbad Hydrologic Unit and San Luis Rey Watershed Exotic Invasives Removal, Phase II  
San Diego County



- Castor bean, giant reed, and gum tree infestation in the Escondido Creek floodplain; infestation is approximately 1.5 miles upstream of the San Elijo Lagoon Ecological Reserve.

#28. Carlsbad Hydrologic Unit and San Luis Rey Watershed Exotic Invasives Removal, Phase II  
San Diego County



- Canary Island date palm and gum tree infestation in Escondido Creek floodplain in the Ford Wildlife Habitat Preserve, adjacent to the San Elijo Lagoon Ecological Reserve.

## #28. Carlsbad Hydrologic Unit and San Luis Rey Watershed Exotic Invasives Removal, Phase II San Diego County



- Arundo was reduced and allowed to re-sprout, Arundo shows effect of early March 2008 treatment

- Replanting is two years old