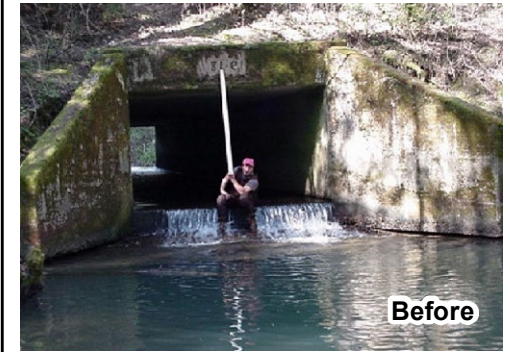


- Barriers Remediated
- Total Barrier
- Partial Barrier
- Not a Barrier
- Remediated, Fish Response Unconfirmed
- ▲ Natural Total Barrier
- ▲ Natural Partial Barrier
- ★ Screened Diversion
- ★ Unscreened Diversion
- Unknown Passage Status
- Unassessed



Site Name: Ryan Creek Road

Stream Name: Ryan Creek

Structure Owner: Mendocino County Department of Transportation

Year Remediated: 2011

Site Type: Road crossing

Site Status After Remediation: Not a barrier

Species Benefited After Remediation: Coho salmon

Immediate Downstream barrier PAD ID:

PAD ID: 705896

Tributary To: Outlet Creek

Barrier Remediation By: Five Counties Salmonid Conservation Program

Barrier Description Prior to Remediation: Partial

Count of Barriers Downstream:

Count of Barriers Upstream:

Distance Upstream to Next Barrier or Limit of Anadromy : Miles

*Site statistics based on June 2015 version of the Passage Assessment Database

Notes: On 8/19/2013, Wiyot tribe assessed fish passage for adult pacific lamprey, and determined that this barrier is Non-barrier. New open-bottom arch culvert with natural streambed. Culvert replaced as part of mitigation for Willits bypass project. Refer to RTA (2013) for more information. Ross Taylor documented Pacific lamprey spawning in Ryan Cr. Prior to lamprey assessment: Project completed in Summer 2011, replaced with open-bottom arch structure, 100% passable. CDFW conducted spawning surveys in 2012 and found coho upstream, up to PAD ID 712813. RTA will conduct spawning surveys in 2014. BEFORE: partial barrier to adults, total barrier to juveniles. Was listed as a partial barrier.